

## Appendix D: Demand Figures

<b>Figure 1: Low Density Residential Water Consumption by Parcel, All Ranges (2013)</b> .....	1-1
<b>Figure 2: Low Density Residential Water Consumption by Parcel, Top 20 percent (2013)</b> .....	1-2
<b>Figure 3: Low Density Residential Annual Average Demand (2006 – 2014), Homes Constructed Pre- and Post-1996, Cubic Metres per Month</b> .....	2-3
<b>Figure 4: Low Density Residential Average Summer Demand (2006 – 2014), Homes Constructed Pre- and Post-1996, Cubic Metres per Month</b> .....	2-3
<b>Figures 5: Low Density Residential Average Winter Demand (2006 – 2014), Homes Constructed Pre- and Post-1996, Cubic Metres per Month</b> .....	2-4
<b>Figure 6: Medium Density Residential Water Consumption by Parcel, All Ranges (2013)</b> .....	3-5
<b>Figure 7: Medium Density Residential Water Consumption by Parcel, Top 20 Percent (2013)</b> .....	3-6
<b>Figure 8: Medium Density Residential Annual Average Demand (2006 – 2014), Homes Constructed Pre- and Post-1996, Cubic Metres per Month</b> .....	4-7
<b>Figure 9: Medium Density Residential Average Summer Demand (2006 – 2014), Homes Constructed Pre- and Post-1996, Cubic Metres per Month</b> .....	4-7
<b>Figure 10: Medium Density Residential Average Winter Demand (2006 – 2014), Homes Constructed Pre- and Post-1996, Cubic Metres per Month</b> .....	4-8
<b>Figure 11: High Density Residential Water Consumption by Parcel, All Ranges (2013)</b> .....	5-9
<b>Figure 12: High Density Residential Water Consumption by Parcel, Top 20 Percent (2013)</b> .....	5-10
<b>Figure 13: High Density Residential Annual Average Demand (2006 – 2014), Buildings Constructed Pre- and Post-1996, Cubic Metres per Month</b> .....	6-11
<b>Figure 14: High Density Residential Average Summer Demand (2006 – 2014), Buildings Constructed Pre- and Post-1996, Cubic Metres per Month</b> .....	6-11
<b>Figure 15: High Density Residential Average Winter Demand (2006 – 2014), Buildings Constructed Pre- and Post-1996, Cubic Metres per Month</b> .....	6-12

## 1.0 SPATIAL TRENDS IN LOW DENSITY RESIDENTIAL SECTOR

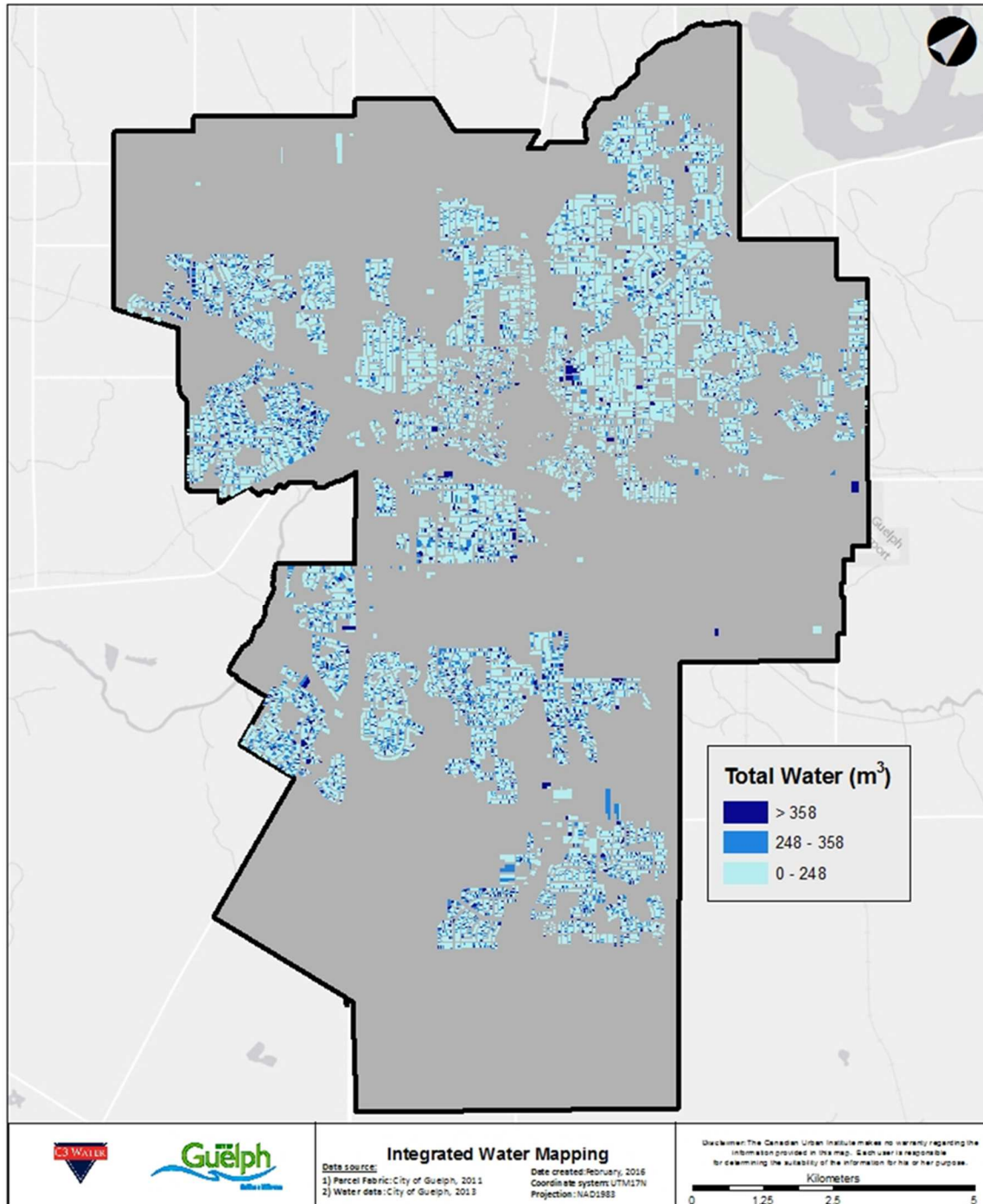
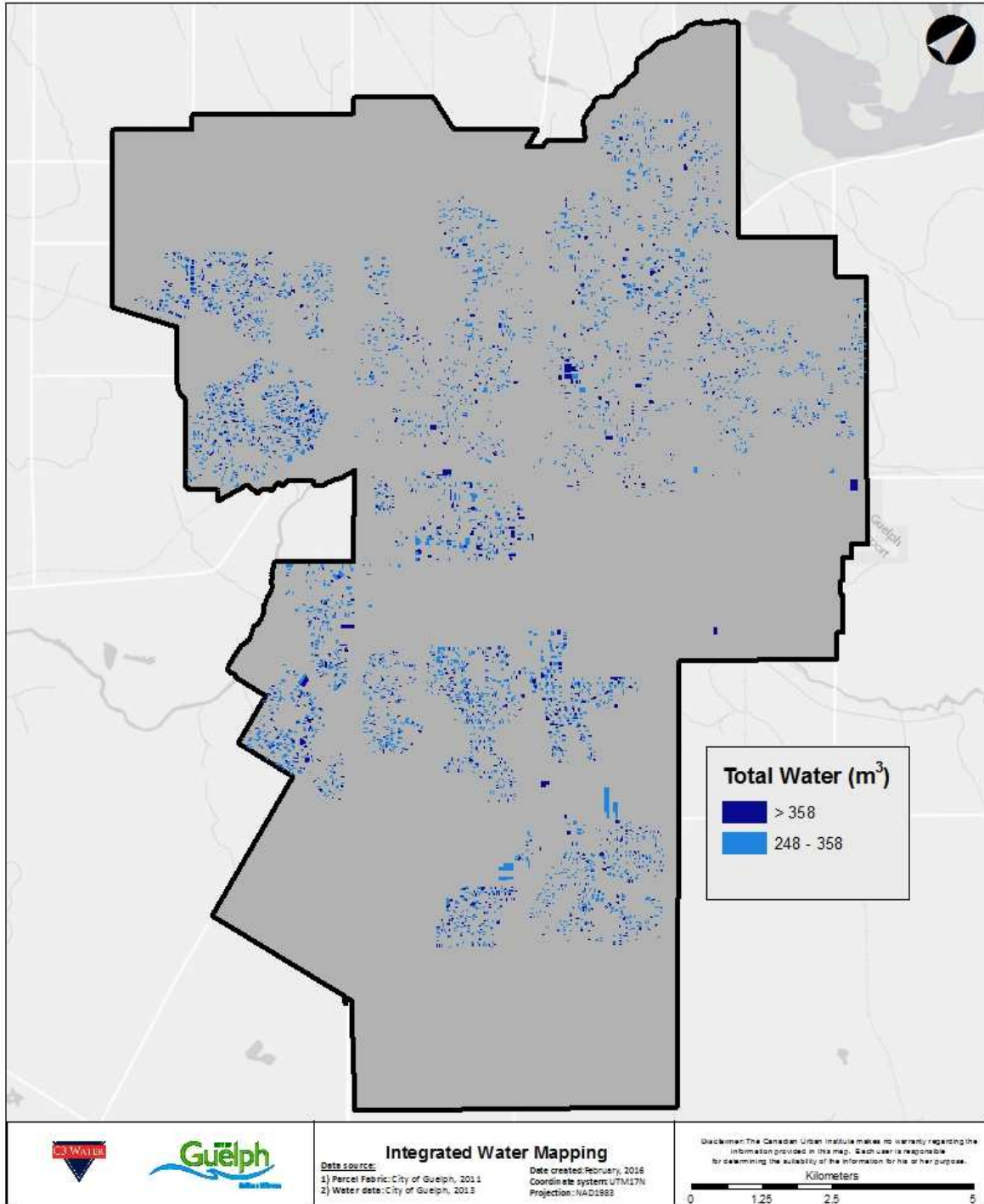
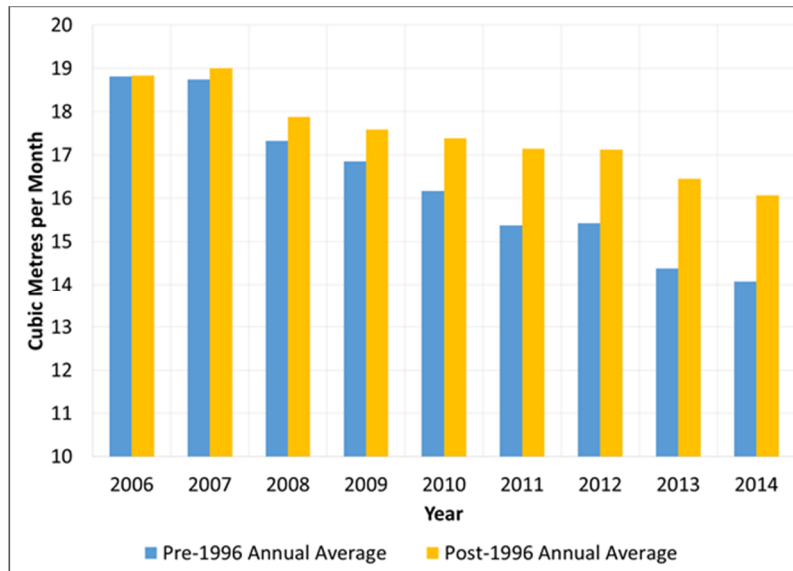


Figure 1: Low Density Residential Water Consumption by Parcel, All Ranges (2013)

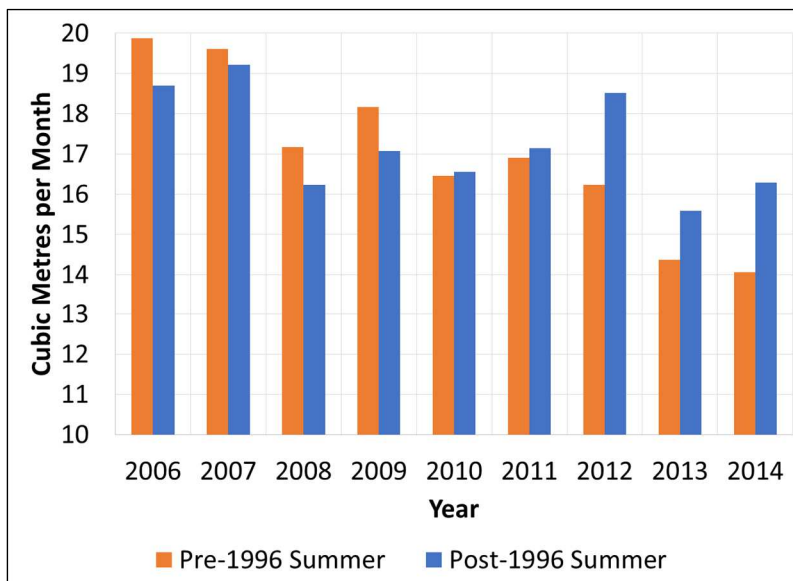


**Figure 2: Low Density Residential Water Consumption by Parcel, Top 20 percent (2013)**

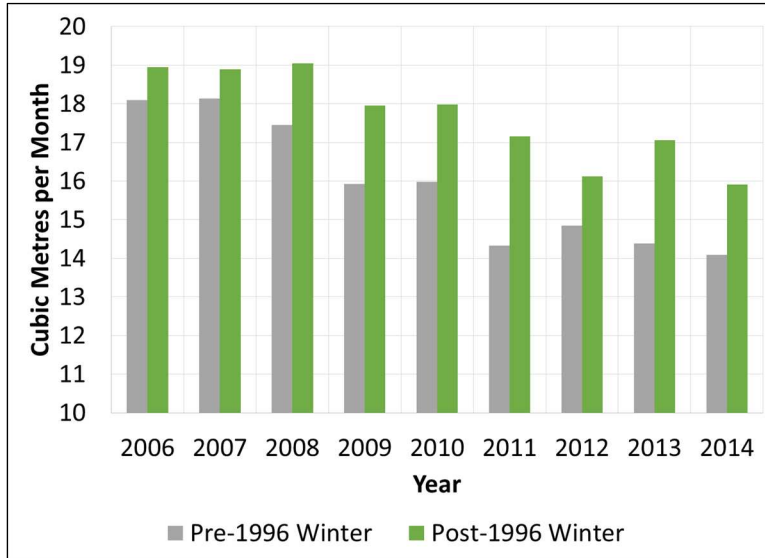
## 2.0 LOW DENSITY RESIDENTIAL CONSUMPTION BY VINTAGE OF HOMES



**Figure 3: Low Density Residential Annual Average Demand (2006 – 2014), Homes Constructed Pre- and Post-1996, Cubic Metres per Month**

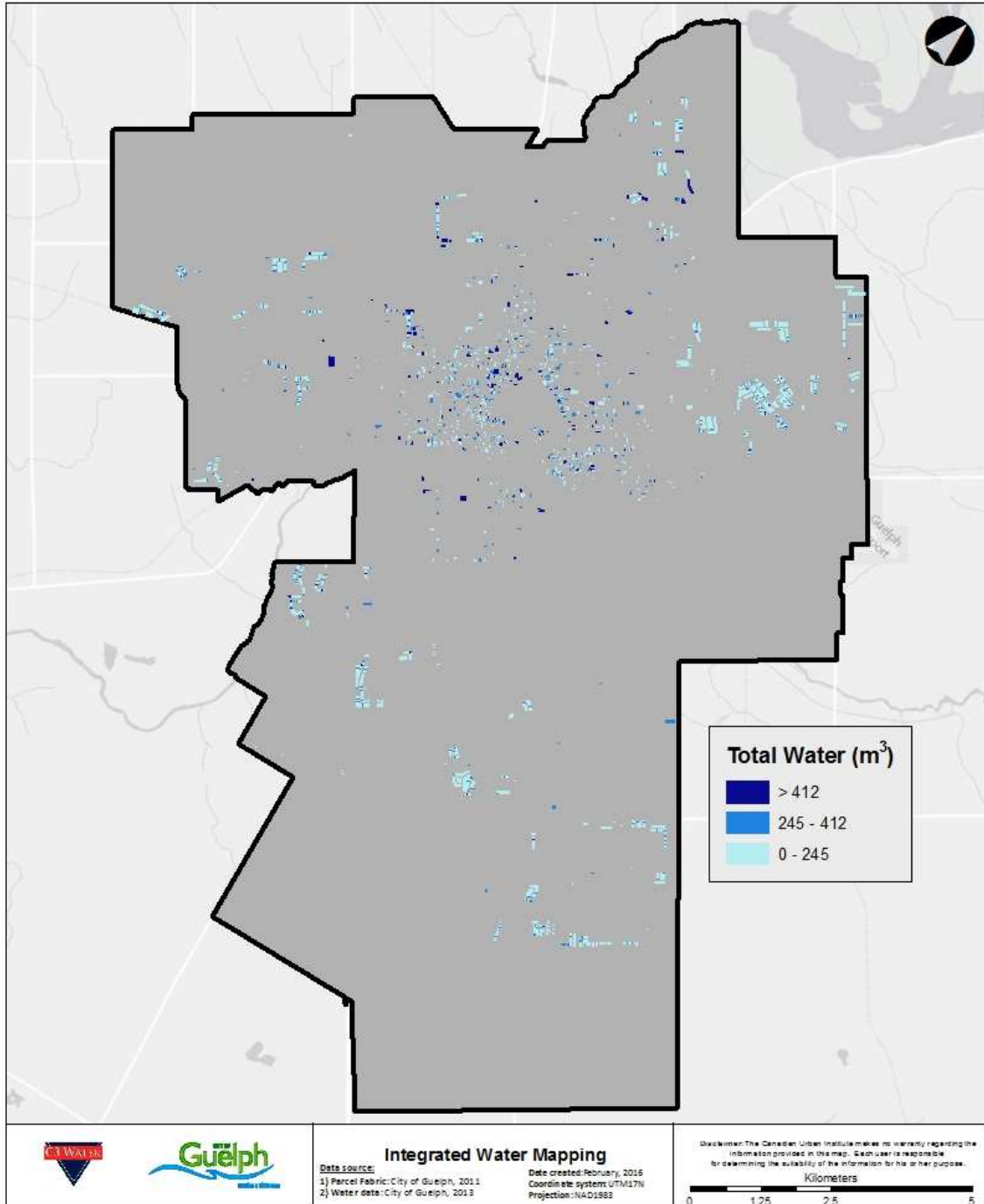


**Figure 4: Low Density Residential Average Summer Demand (2006 – 2014), Homes Constructed Pre- and Post-1996, Cubic Metres per Month**

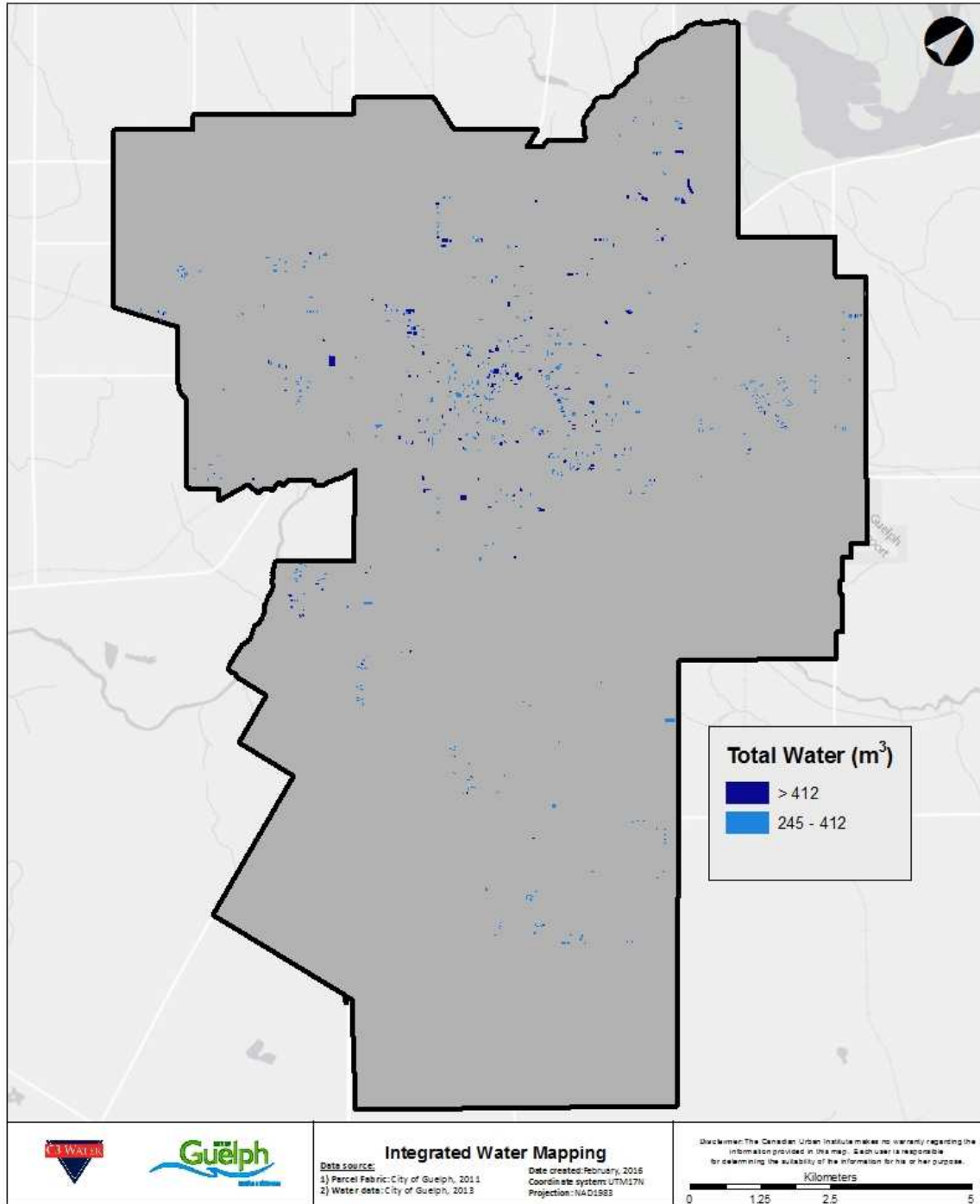


**Figures 5: Low Density Residential Average Winter Demand (2006 – 2014), Homes Constructed Pre- and Post-1996, Cubic Metres per Month**

### 3.0 SPATIAL TRENDS IN MEDIUM DENSITY RESIDENTIAL

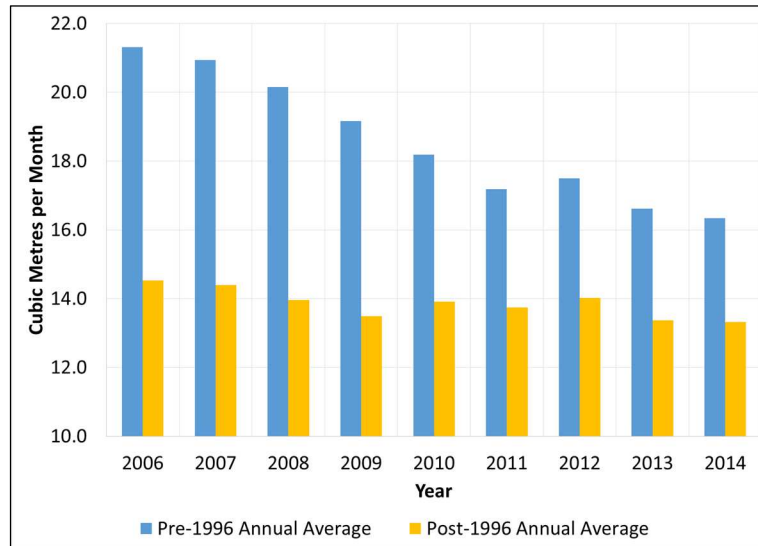


**Figure 6: Medium Density Residential Water Consumption by Parcel, All Ranges (2013)**

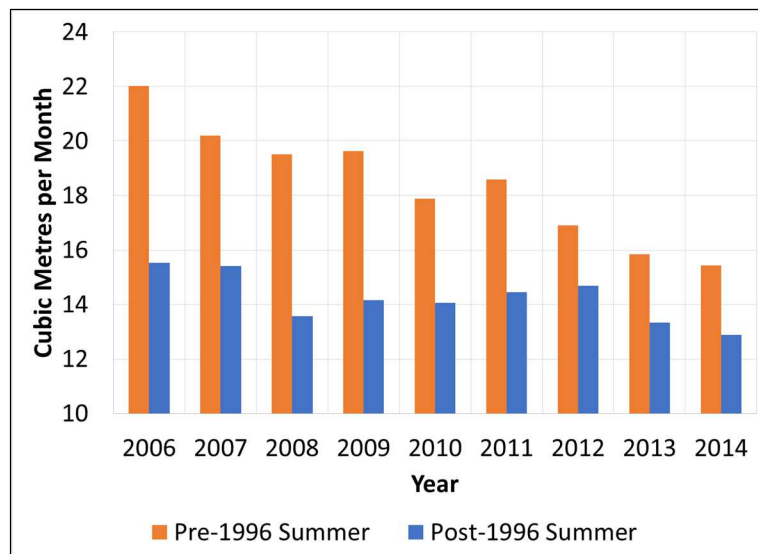


**Figure 7: Medium Density Residential Water Consumption by Parcel, Top 20 Percent (2013)**

## 4.0 MEDIUM DENSITY RESIDENTIAL CONSUMPTION BY VINTAGE OF HOMES

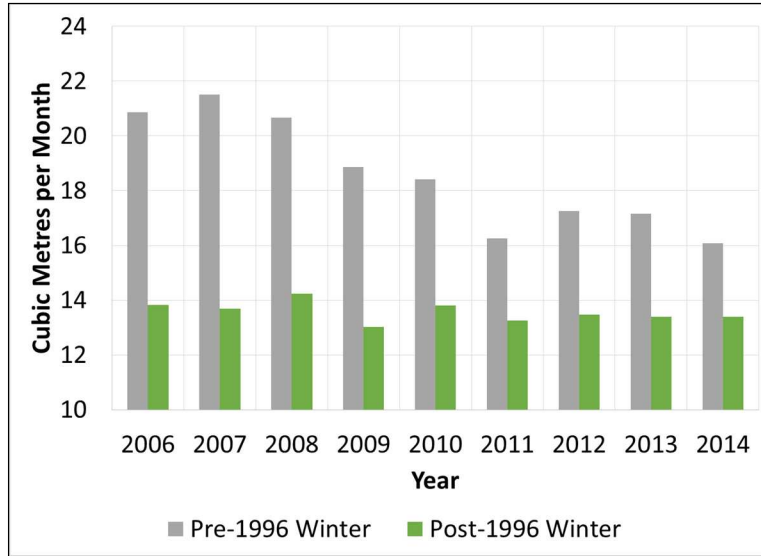


**Figure 8: Medium Density Residential Annual Average Demand (2006 – 2014), Homes Constructed Pre- and Post-1996, Cubic Metres per Month**



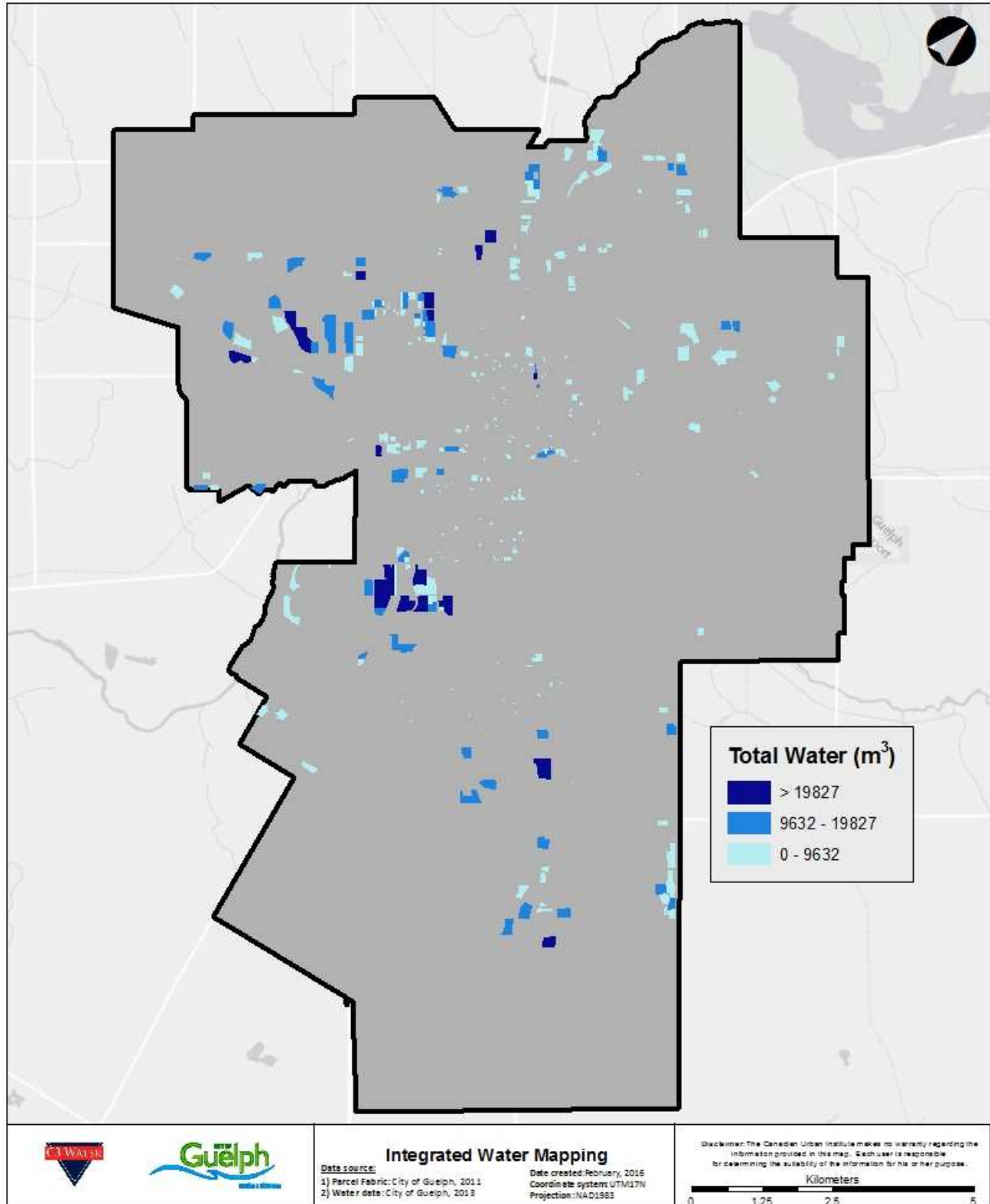
**Figure 9: Medium Density Residential Average Summer Demand (2006 – 2014), Homes Constructed Pre- and Post-1996, Cubic Metres per Month**



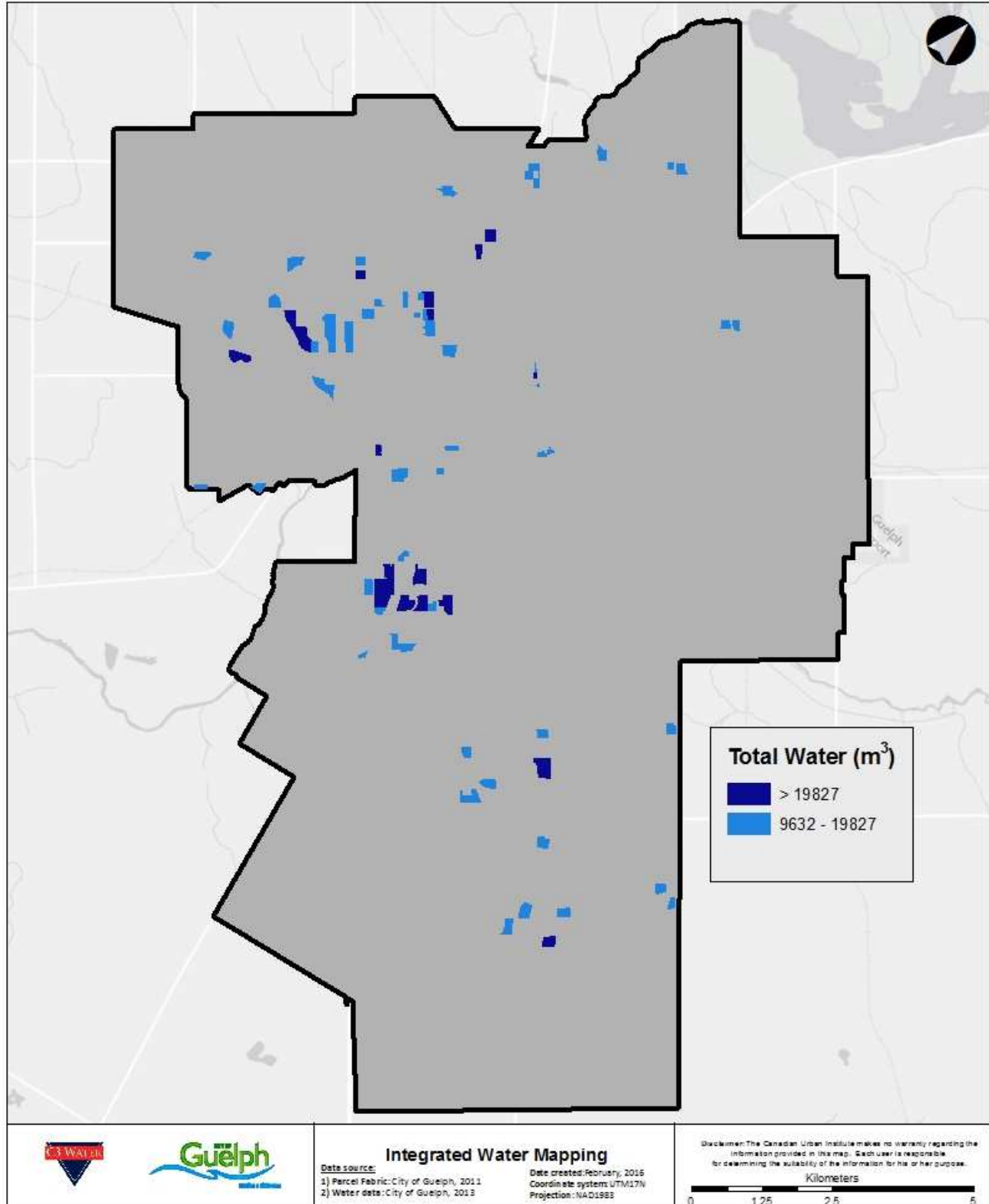


**Figure 10: Medium Density Residential Average Winter Demand (2006 – 2014), Homes Constructed Pre- and Post-1996, Cubic Metres per Month**

## 5.0 SPATIAL TRENDS IN HIGH DENSITY RESIDENTIAL

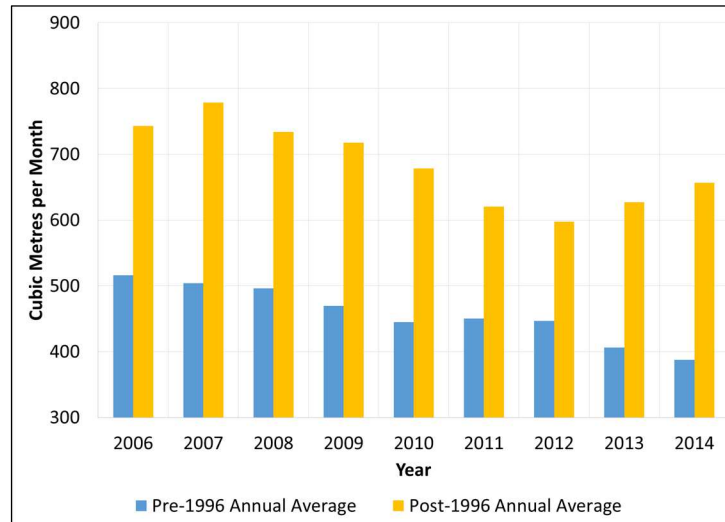


**Figure 11: High Density Residential Water Consumption by Parcel, All Ranges (2013)**

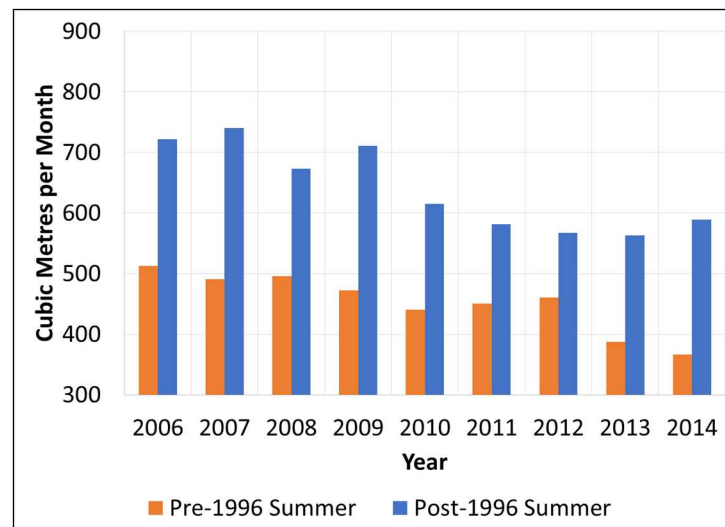


**Figure 12: High Density Residential Water Consumption by Parcel, Top 20 Percent (2013)**

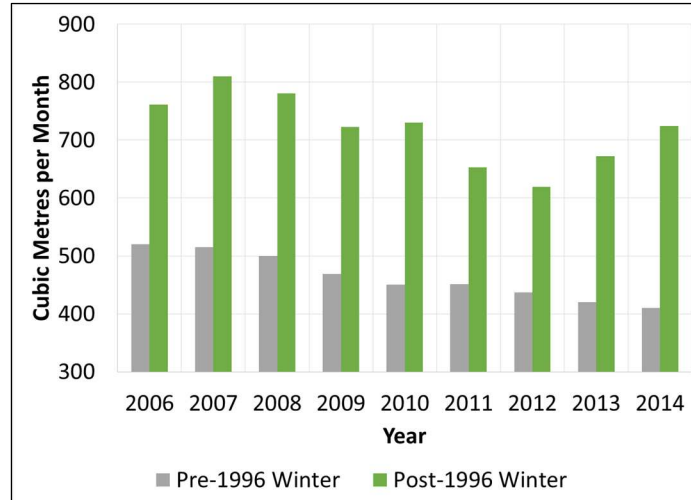
## 6.0 HIGH DENSITY RESIDENTIAL CONSUMPTION BY VINTAGE OF HOMES



**Figure 13: High Density Residential Annual Average Demand (2006 – 2014), Buildings Constructed Pre- and Post-1996, Cubic Metres per Month**



**Figure 14: High Density Residential Average Summer Demand (2006 – 2014), Buildings Constructed Pre- and Post-1996, Cubic Metres per Month**



**Figure 15: High Density Residential Average Winter Demand (2006 – 2014), Buildings Constructed Pre- and Post-1996, Cubic Metres per Month**