

# Construction details within termite management area

## Decks and porches

**Do not remove demolished or excavated material from property within the termite management area without having it inspected and approved for removal.**

**Contact the Termite Control Officer for a disposal permit.**

Alternatively to, or in addition to, the physical termite control barrier illustrated in the image below, soil may be treated with a soil termiticide.

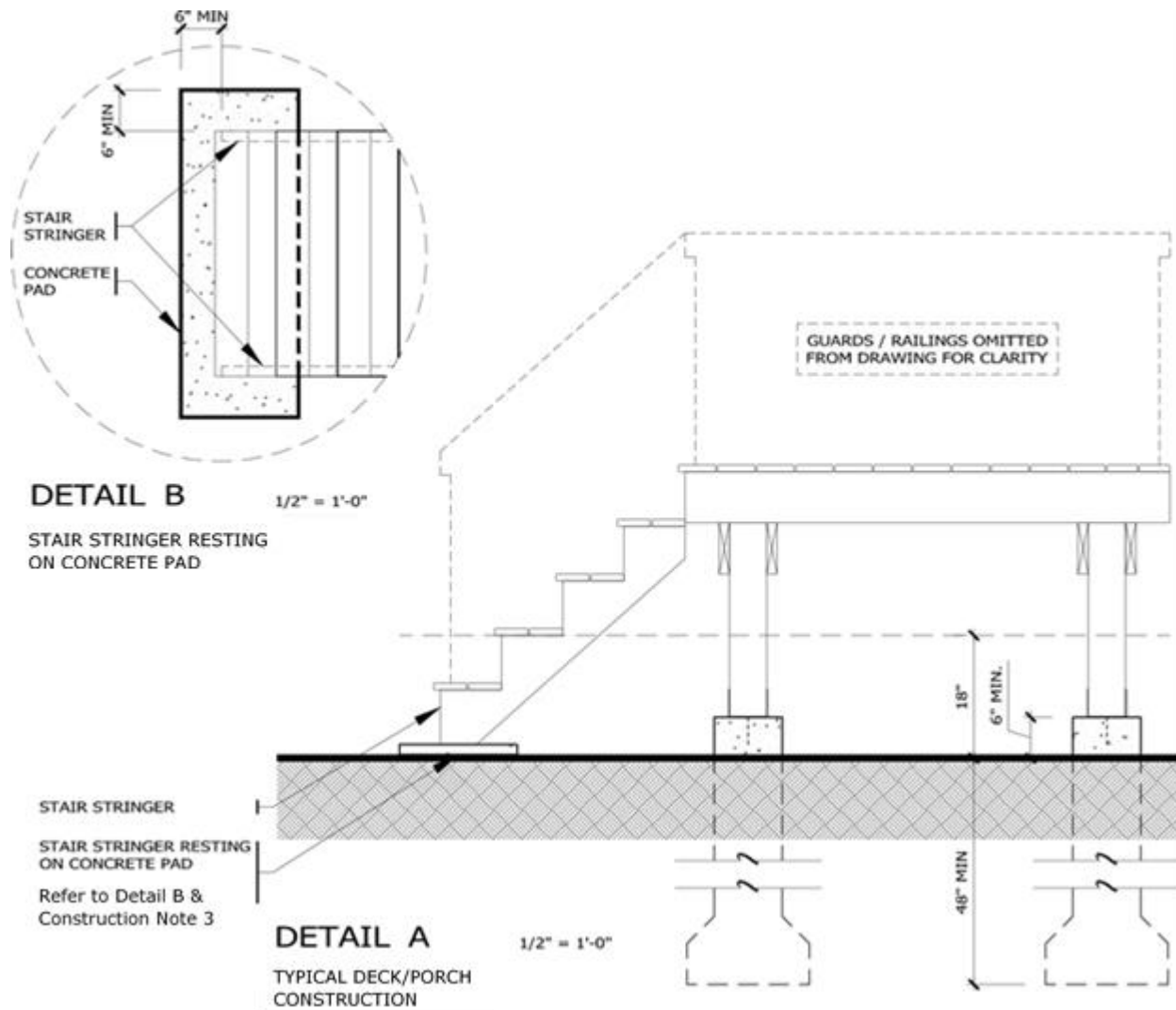
The construction details specified here are based on best practices known to-date, and do not preclude any alternative details, if approved by the Termite Control Officer.

The use of prescribed construction methods and/or chemical termiticide treatment will reduce the risk of termite infestation. No methods provide an absolute guarantee against future infestation.

For additional termite controls or procedures, please contact the Termite Control Officer, Building Services, at 519-837-5615 or visit [guelph.ca](http://guelph.ca).

### Construction Notes

1. All wood within 18 inches of finished grade must be pressure-treated.
2. Concrete piers or deck blocks are required, extending not less than 6 inches above finished grade. Wood posts are not permitted in the ground.
3. Stair stringers must rest on a concrete pad, not directly on the ground. Concrete pad must project a minimum of 1 inch above finished grade and minimum of 6 inches beyond stair stringer. See Detail B.
4. All lattice and trim must be termite resistant (i.e.: pressure-treated or vinyl).
5. If using any type of paper-based concrete forms (i.e.: Sonotubes), all above grade portions of forms must be removed.



Alternate formats of this document are available as per the Accessibility for Ontarians with Disabilities Act by contacting Building Services at 519-837-5615 or email [building@guelph.ca](mailto:building@guelph.ca).