

# TRANS CANADA TRAIL ROUTE SELECTION STUDY KEY MAP

## Route Segments

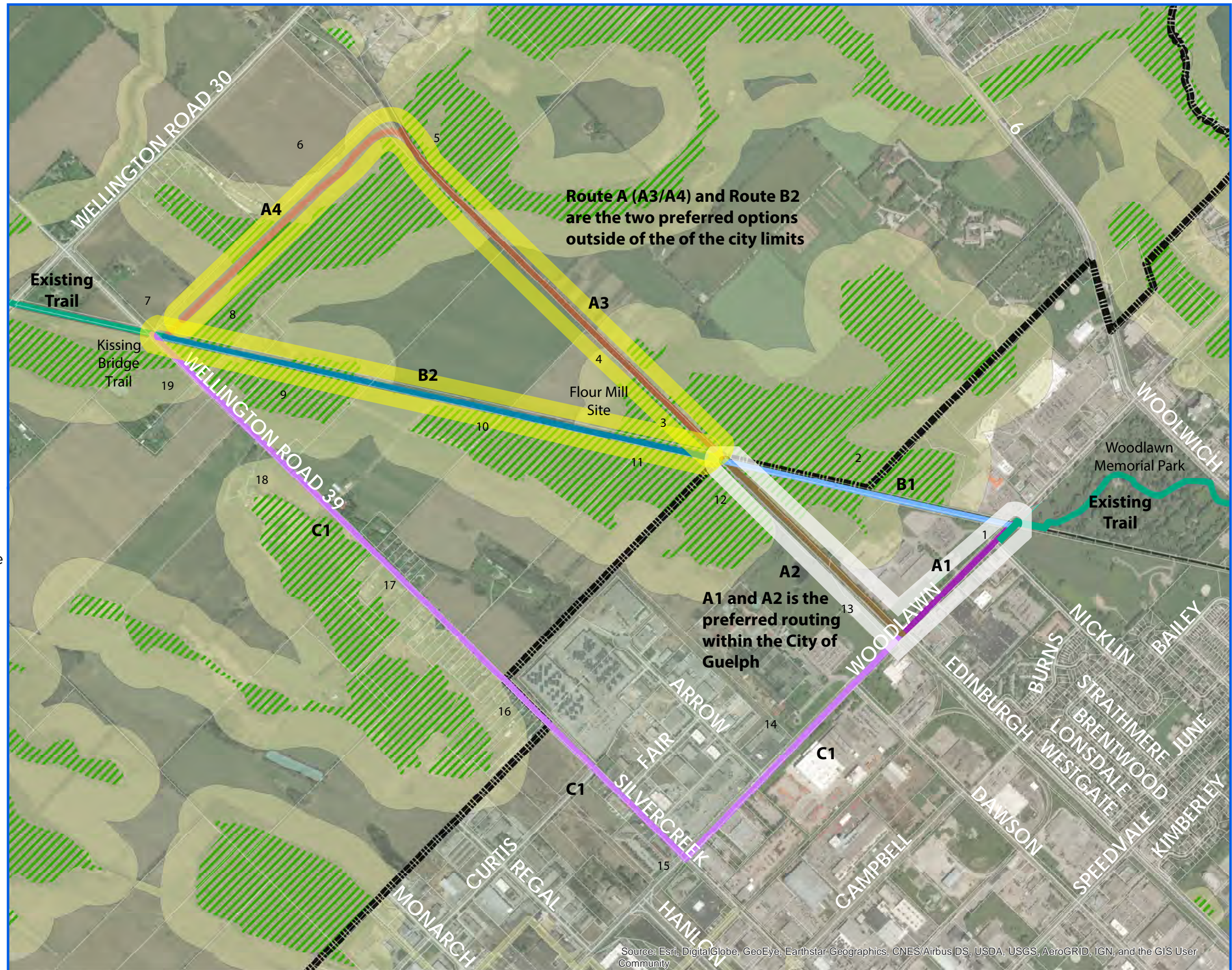
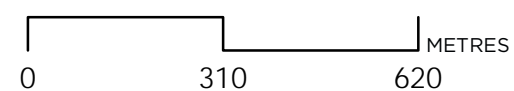
- Existing / Planned
- A1
- A2
- A3
- A4
- B1
- B2
- C1

## Background

- Close Up Map Reference
- Railway
- Property
- Guelph Boundary
- GRCA Wetlands
- GRCA Regulation Limit
- Water

November 2019

Route lines are illustrative, and do not represent exactly where a trail would be implemented within right-of-way.



Source: Esri, DigitalGlobe, GeoEye, Earthstar Geographics, CNES/Airbus DS, USDA, USGS, AeroGRID, IGN, and the GIS User Community