

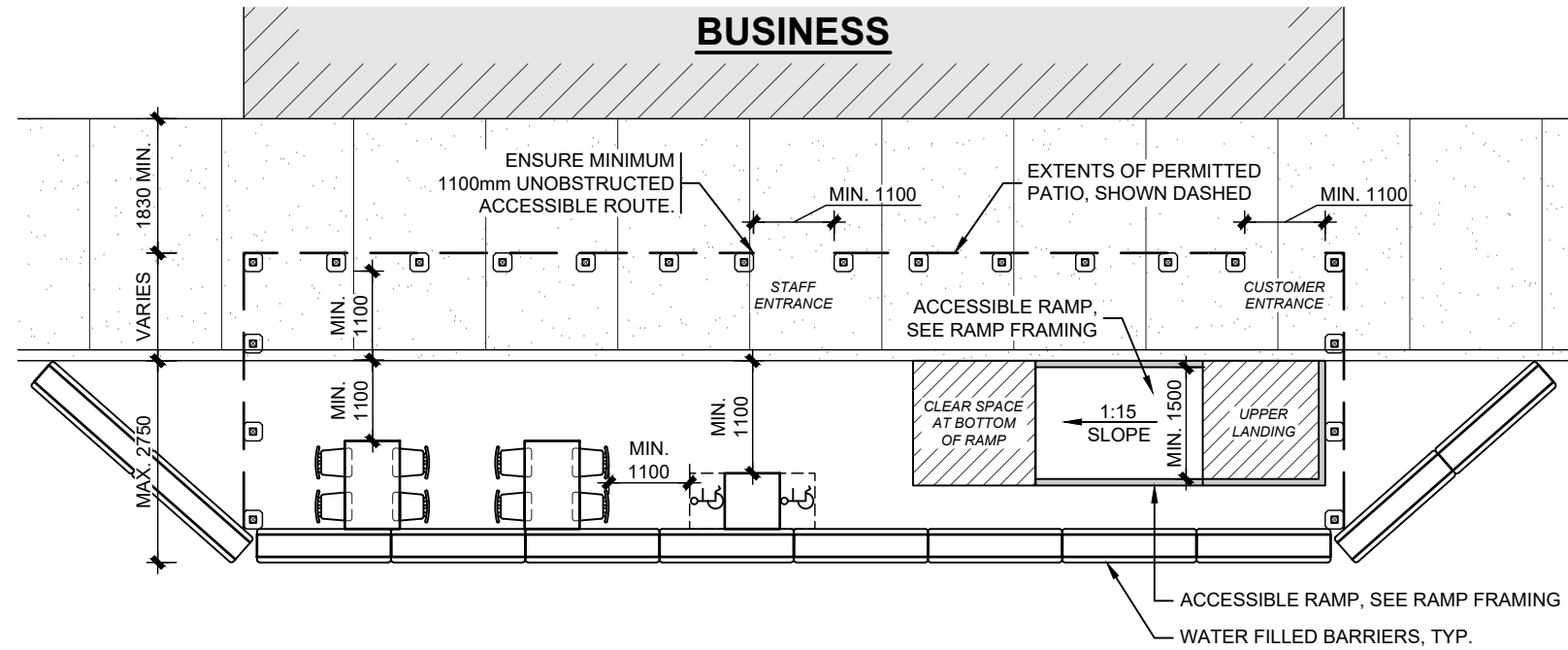
**SCHEMATIC SITE PLAN - 2.75m WIDE PATIO FROM CURB**

SCALE 1:100

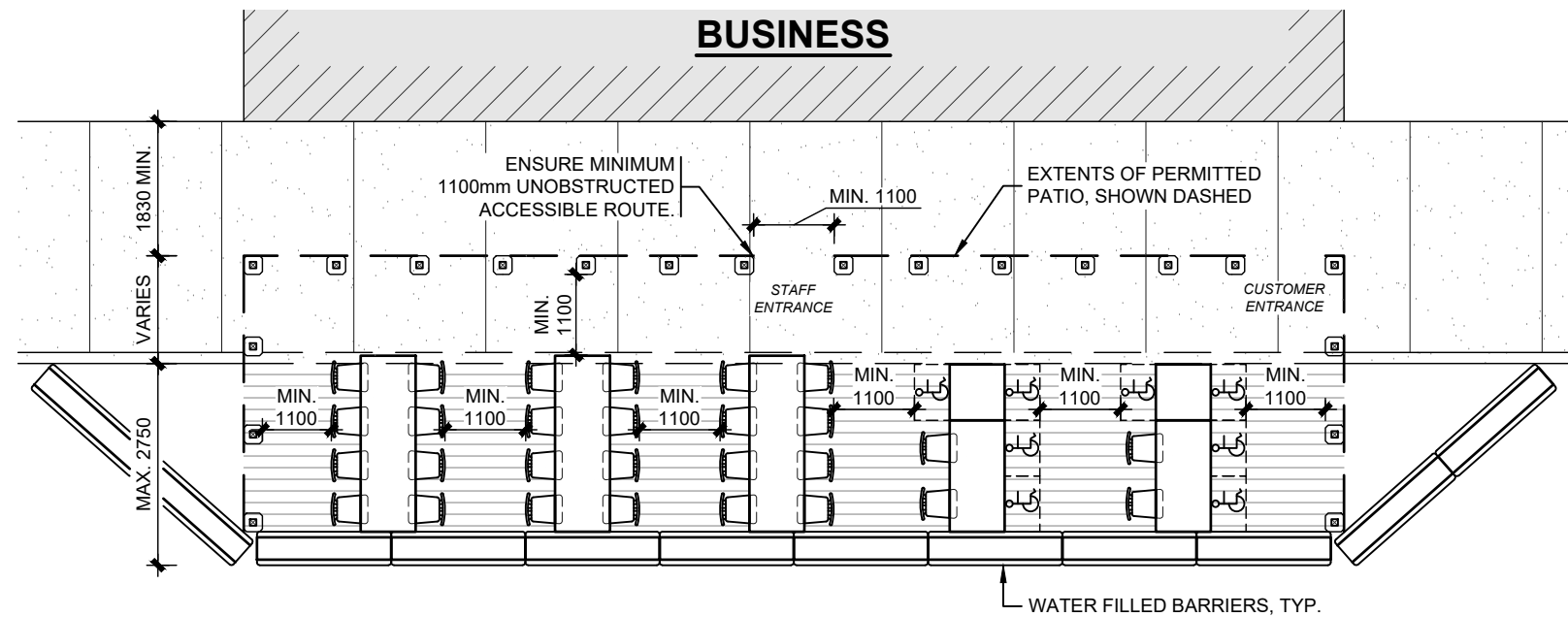
**NOTES:**

- PATIO MAY EXTEND THE WIDTH OF THE BUSINESS UNIT IN ADDITION TO UTILIZING A PORTION OF THE SIDEWALK IF THE SIDEWALK EXCEEDS 1830mm IN WIDTH.
- TABLES MAY BE PLACED DIRECTLY ON ASPHALT WITH NO DECK STRUCTURE, PROVIDED AN ACCESSIBLE RAMP IS CONSTRUCTED, SEE RAMP DETAIL.





**PATIO LAYOUT EXAMPLE 1 - 2.75m WIDE PATIO ON ASPHALT**  
SCALE 1:100



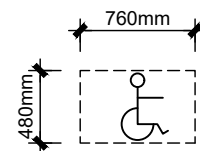
**PATIO LAYOUT EXAMPLE 2 - 2.75m WIDE PATIO ON DECK PLATFORM**  
SCALE 1:100

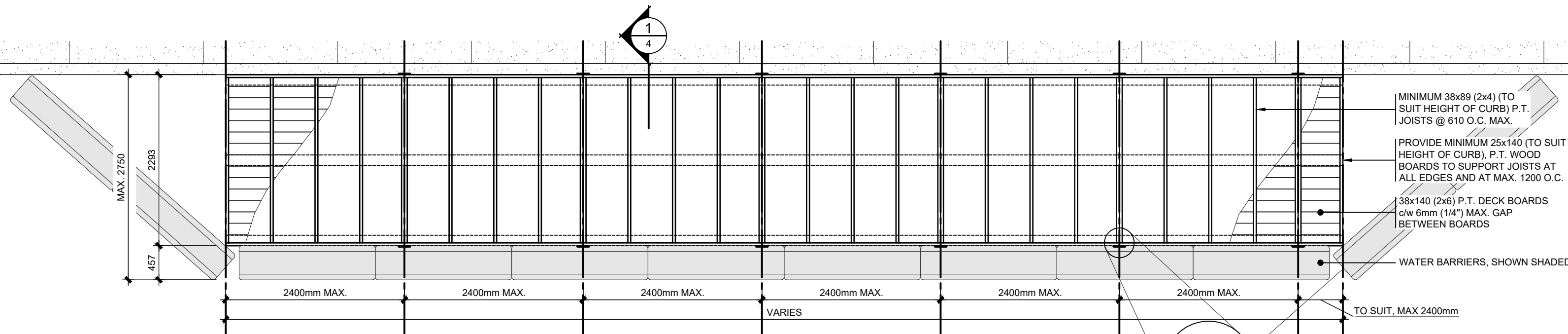
**PATIO LAYOUT NOTES:**

- PATIOS TO BE DELINEATED BY A CONTINUOUS FENCE WITHIN PERMITTED PATIO AREA, SEE FENCE DETAILS.
- TABLE LAYOUT, RAMP LOCATION AND ENTRANCE LOCATION CAN BE REARRANGED AS PREFERRED PROVIDED ALL CLEARANCES ARE MET, SEE EXAMPLES.
- ENSURE MINIMUM 1100mm UNOBSTRUCTED ACCESSIBLE ROUTE.
- SUBJECT TO REVIEW BY BUILDING DEPARTMENT, AND CAPACITY OF EXISTING WASHROOMS TO SERVICE OVERALL CUSTOMERS/STAFF (INDOORS AND OUTDOORS), SEATING LAYOUT MAY NEED TO BE ALTERED.

**ACCESSIBLE SEATING:**

- ACCESSIBLE SEATING PROVIDED AT TABLES SHALL HAVE A CLEAR SPACE OF 760mm x 480mm, TYPICAL.
- ACCESSIBLE SEATING TO BE MINIMUM 20% OF TOTAL PATIO SEATING.



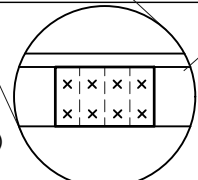


**DECK FRAMING PLAN - 2.75m PATIO NOTES:**

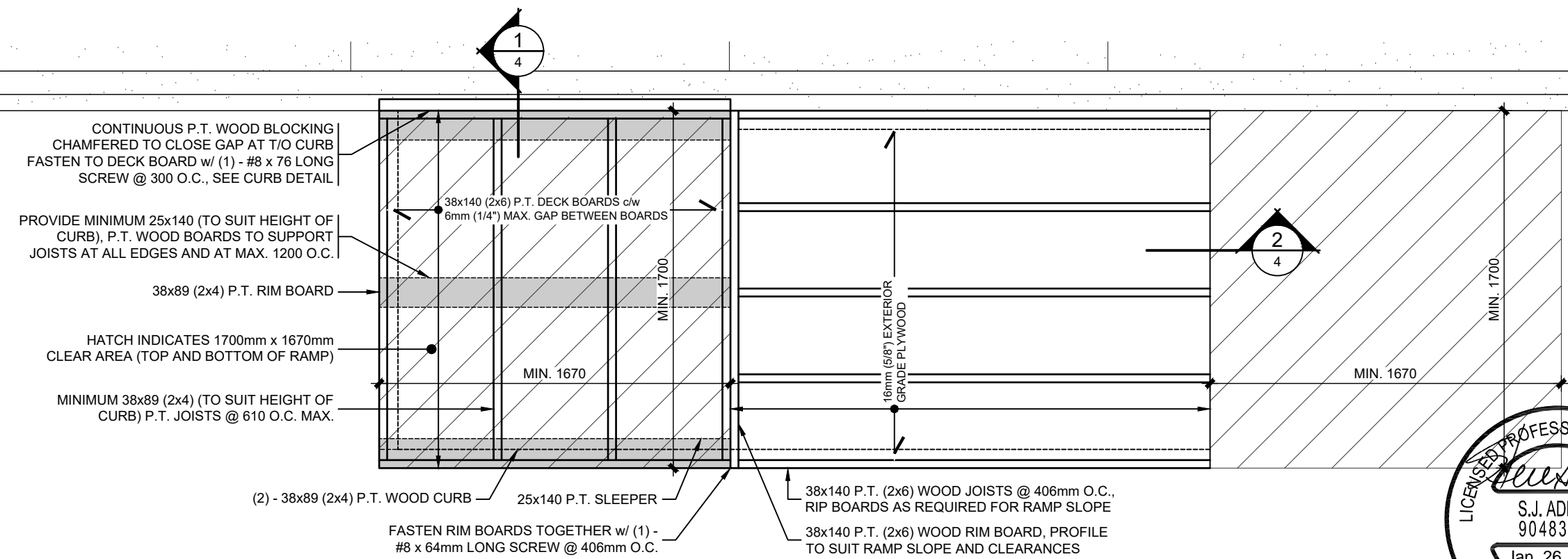
SCALE 1:50

DESIGN LOAD: LIVE LOAD = 4.8 kPa

- DECK FRAMING TO BE CONSTRUCTED IN 2400mm WIDE SECTIONS. AFTER SHIMMED AND LEVELED FASTEN SECTIONS TOGETHER w/ 16ga. x 150 x 90 GALVANIZED STEEL FACE PLATES c/w (8) - #8 x 76mm LONG SCREWS (4 INTO EACH PLATFORM)
- NAILS USED IN PRESSURE TREATED WOOD CONNECTIONS TO BE HOT DIPPED GALVANIZED TO ASTM A153. SCREWS USED IN PRESSURE TREATED WOOD TO BE HOT DIPPED GALVANIZED TO ASTM A153 OR POLYMER COATED.



- MINIMUM 38x89 (2x4) (TO SUIT HEIGHT OF CURB) P.T. JOISTS @ 610 O.C. MAX.
- PROVIDE MINIMUM 25x140 (TO SUIT HEIGHT OF CURB), P.T. WOOD BOARDS TO SUPPORT JOISTS AT ALL EDGES AND AT MAX. 1200 O.C.
- 38x140 (2x6) P.T. DECK BOARDS c/w 6mm (1/4") MAX. GAP BETWEEN BOARDS
- WATER BARRIERS, SHOWN SHADED
- TO SUIT, MAX 2400mm



**NOTES:**

- RAMP SURFACE TO BE:
  - SLIP RESISTANT
  - DETECTABLE WARNING SURFACE WITH COLOUR (PEEL AND STICK)
  - TEXTURE IS CONTRASTED WITH ADJACENT SURFACES (TAPE TOP AND BOTTOM)
  - A SMOOTH TRANSITION FROM THE RAMP AND ADJACENT SURFACES (MAX. 6.4mm (1/4") DIFFERENCE)

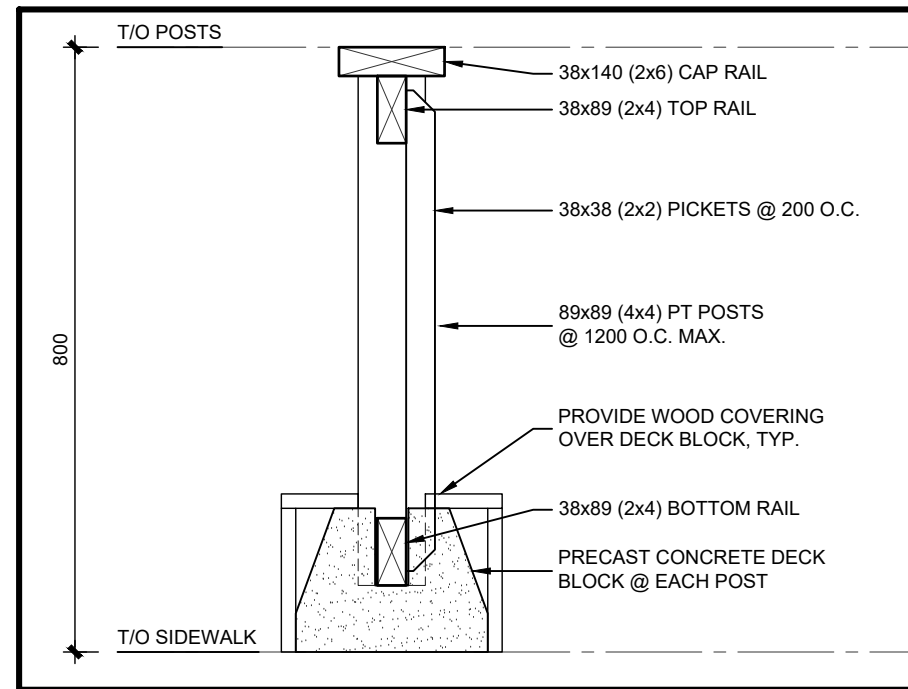
**TYPICAL RAMP FRAMING**

SCALE 1:25

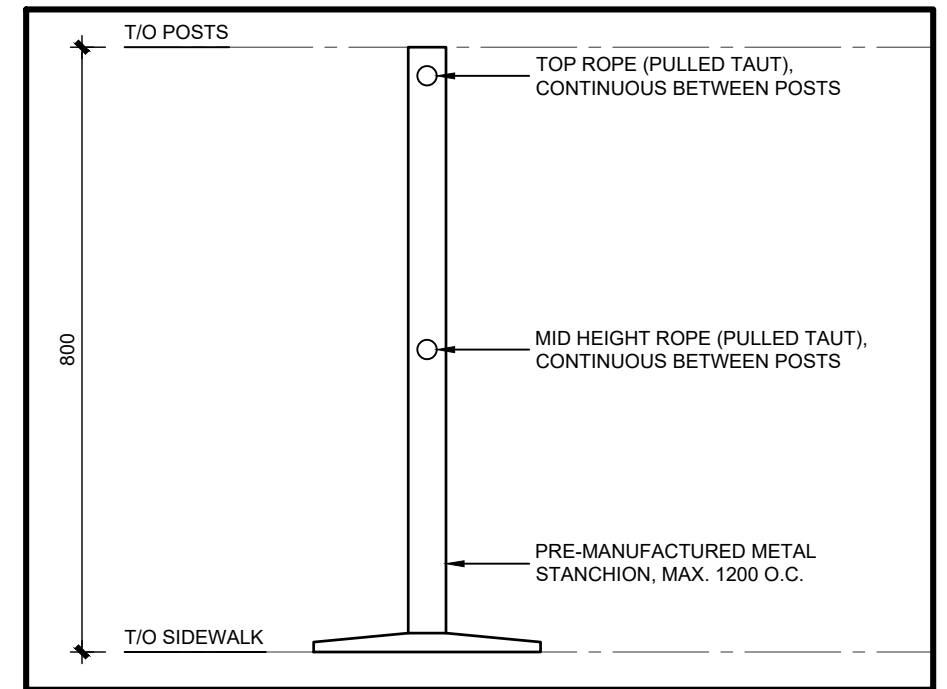


**TACOMA ENGINEERS**  
 176 Speedvale Avenue West  
 Guelph, Ontario N1H 1C3  
 Tel: 519.763.2000  
 www.tacomaengineers.com

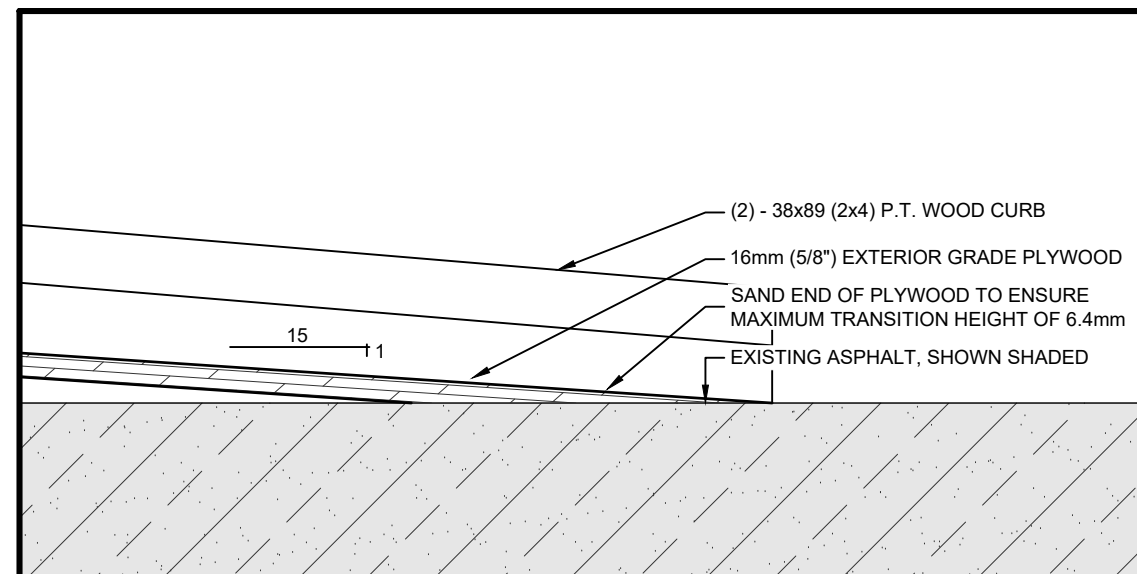
**CITY OF Guelph**  
 Making a Difference



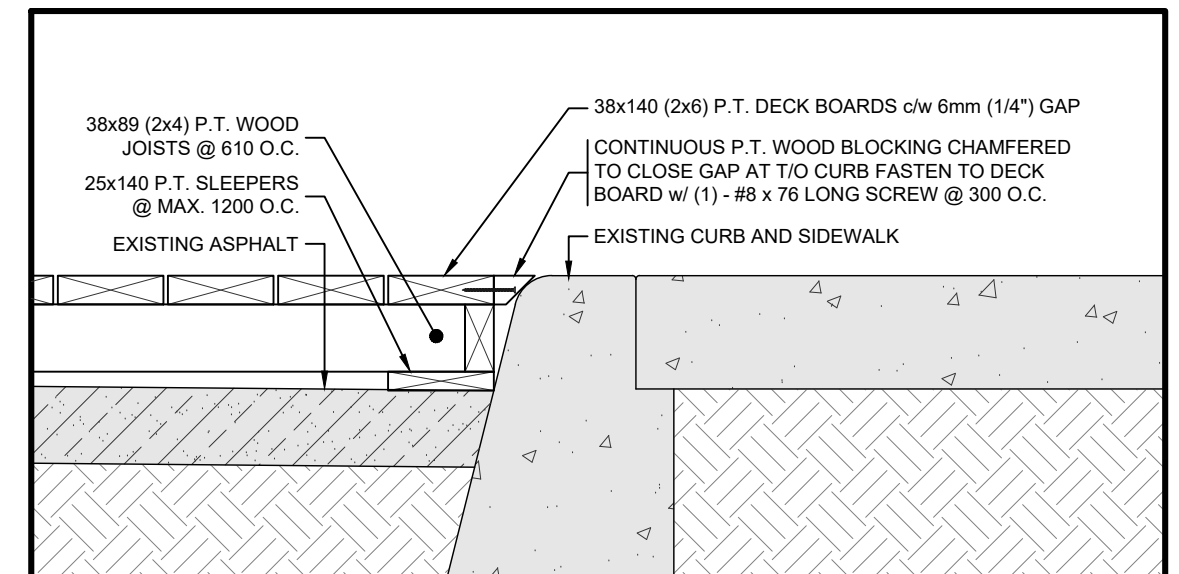
**DETAIL - WOOD FENCE**  
SCALE 1:10



**DETAIL - METAL STANCHION w/ ROPE FENCE**  
SCALE 1:10



**2**  
**4** **DETAIL - BOTTOM RAMP TRANSITION**  
SCALE: 1:5



**1**  
**4** **SECTION - TYPICAL CURB TRANSITION**  
SCALE: 1:10