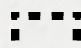

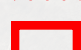





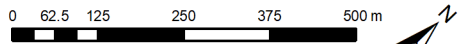
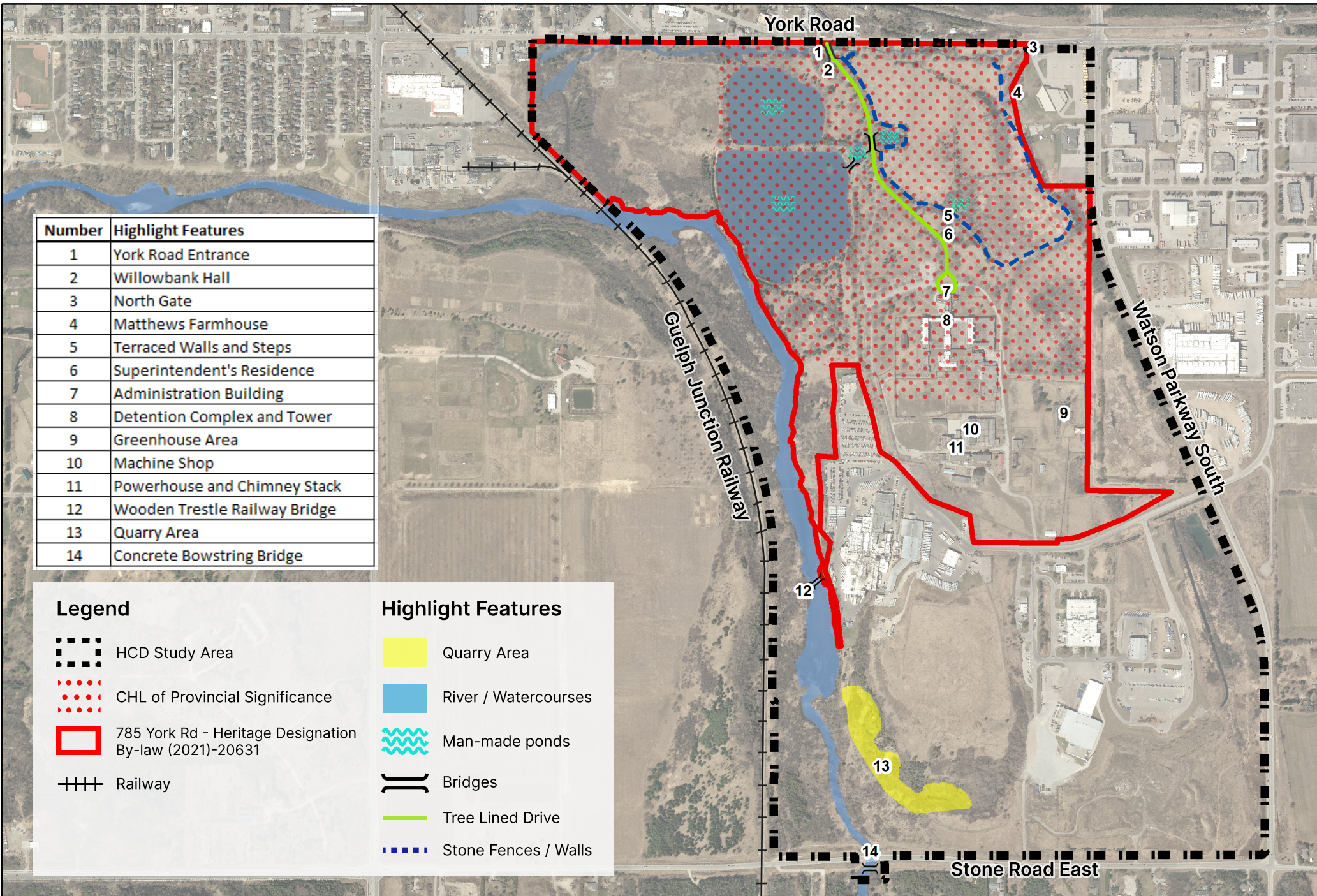
Number	Highlight Features
1	York Road Entrance
2	Willowbank Hall
3	North Gate
4	Matthews Farmhouse
5	Terraced Walls and Steps
6	Superintendent's Residence
7	Administration Building
8	Detention Complex and Tower
9	Greenhouse Area
10	Machine Shop
11	Powerhouse and Chimney Stack
12	Wooden Trestle Railway Bridge
13	Quarry Area
14	Concrete Bowstring Bridge

Legend

-  HCD Study Area
-  CHL of Provincial Significance
-  785 York Rd - Heritage Designation By-law (2021)-20631
-  Railway

Highlight Features

-  Quarry Area
-  River / Watercourses
-  Man-made ponds
-  Bridges
-  Tree Lined Drive
-  Stone Fences / Walls



Ontario Reformatory Heritage Conservation District Study Area and Highlight Features