

Notice of Public Open House #1

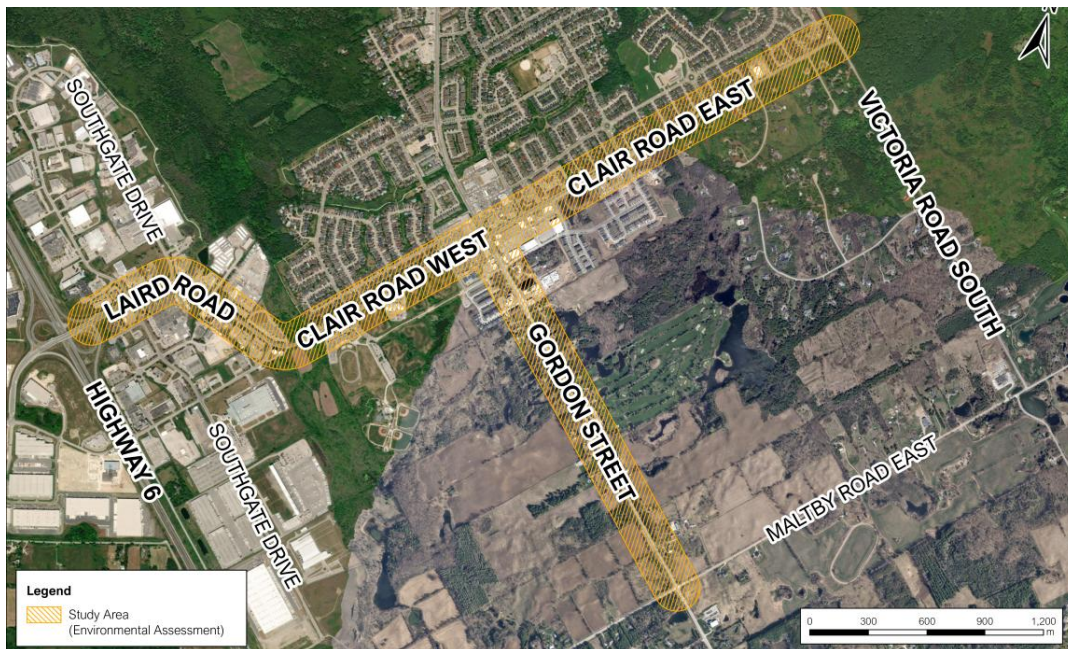
Gordon Street and Clair / Laird Road in the city of Guelph

Schedule 'C' Municipal Class Environmental Assessment

Notice Issued: October 2, 2025

The study

The City of Guelph has initiated a Municipal Class Environmental Assessment (MCEA) Study for improvements to Gordon Street, from Clair Road to Maltby Road, and Clair/Laird Road, from Victoria Road to Southgate Drive (Highway 6 on/off ramps). The study will build on recommendations identified in the previously completed Clair-Maltby Master Environmental Servicing Plan (MESP) and the City's Transportation Master Plan (TMP).



Study area map

You are invited to participate!

The City of Guelph is hosting the first of two Public Open Houses for this study. Public Open House #1 will provide an overview of the study, including the problem and opportunities to be addressed, existing conditions within the study area, the alternative design concepts and evaluation criteria considered.

You are invited to attend Public Open House #1 on **Tuesday, October 21, 2025, from 6:30 – 8:30 pm** at **Aberfoyle Public School (16 Old Brock Rd, Puslinch, ON N0B 2J0)**. This event is being held in person as a drop-in style open house, with no formal presentation. Members of

the project team will be available to answer questions and obtain your feedback. Materials on display at the open house will be available on the project website for public review and comment – follow the QR code or visit:

haveyoursay.guelph.ca/en/projects/gordon-clair-laird-assessment



The process

The study is being completed as a **Schedule ‘C’** project in accordance with the Municipal Class Environmental Assessment (October 2000, amended in 2007, 2011, 2015, 2023 & 2024), which is approved under the Ontario Environmental Assessment Act. The study will address the requirements of Phases 3 and 4 of the Municipal Class EA process.

To address the need for increased road use, the objective of the study is to examine the preferred alternative solution from the MESP, which includes widening arterial roads from two (2) to four (4) lanes, adding active transportation connections, implementing utility and service upgrades, and consider the feasibility of a multi-use crossing across Gordon Street. Upon completion of the study, an Environmental Study Report (ESR) will be prepared to document the Municipal Class EA planning and decision-making process and will be made available for a 30-day public review period. A Notice of Completion will be issued at that stage.

If you have any questions or comments regarding the study, or wish to be added to the email list for receiving notices, please contact one of the project team members:

Colleen Gammie, P. Eng, PMP
Infrastructure Planning Engineer
City of Guelph
519-822-1260 extension 2282
colleen.gammie@guelph.ca

Andrew McGregor, MCIP, RPP
Consultant Project Manager
R.V. Anderson Associates Ltd.
905-685-5049 extension 4211
amcgregor@rvanderson.com

All comments received through the course of the study will be considered when confirming the preferred design.

Personal information collected or submitted in writing at public meetings will be collected, used and disclosed by members of City Council and City staff in accordance with the Freedom of Information and Protection of Privacy Act (MFIPPA). All comments will become part of the public record. If you have questions about the collection, use and disclosure of this personal information, please contact the City’s Information and Access Coordinator by phone at 519-822-1260 extension 2670 or by emailing privacy@guelph.ca.

This notice was first issued on **October 2, 2025**.