

# Upcoming Trenching Work

Summer 2021: Rail Infrastructure Upgrades, City of Guelph

---

Metrolinx is continuing essential maintenance work on the GO Transit Kitchener Line rail corridor in Guelph, including level crossing and signal upgrades. Beginning this Spring, Metrolinx's contractor will dig shallow trenches in a select portion of the right-of-way to replace underground cables, then upgrade signal infrastructure at four level crossings to allow for future rail expansion. The project is expected to be complete Summer 2021.

## WHAT DOES THIS MEAN FOR YOU?

### *Trenching and Drilling*

Beginning the week of May 25, residents can expect to hear noise from trenching machinery and equipment, with work limited to the rail corridor right-of-way between Edinburgh and Yorkshire streets. The use of back-up beepers, a vital safety measure, will be limited to essential work only. Underground signal cable will be replaced, and trenches will be backfilled. Some directional drilling will be required at Edinburgh and Yorkshire St to install conduit for cable to cross Edinburgh and Yorkshire streets. No impacts to traffic are anticipated. Anticipated completion of this work is four weeks.

### *Signal Replacement and Testing*

Beginning in June, signal equipment at Glasgow St N, Yorkshire St N, Edinburg Rd and Alma St level crossings will be upgraded. This work will enable the signalling of a train approaching much sooner and is being undertaken to prepare for future service expansion on the GO Transit Kitchener Line. Signal testing will take place upon completion of these upgrades. This work also includes the removal of old infrastructure at the Dublin Street level crossing, which was permanently closed due to Transport Canada rail safety requirements. Anticipated completion of this work is four weeks.

No road or level crossing closures are anticipated at this time, and every effort will be made to reduce impact to pedestrians and roadway users as this work is completed. Please exercise caution in all areas under construction and follow the direction of signage and flag persons. Extra flag persons and safety personnel will be present during signal testing to ensure the safety of all road users.

## QUESTIONS

Our Community Relations team is available to answer your questions by email or phone, Monday to Friday 8:30 a.m. - 4:30 p.m. If you require emergency assistance after hours, please contact **Geordon Fidler, Signals Supervisor, A&B Rail Services at 289-879-1397.**

Thank you for your patience while we improve transit to get communities moving.

## Guelph-Wellington Community Relations

Tel: 416-202-3467 / E-mail: [GuelphWellington@metrolinx.com](mailto:GuelphWellington@metrolinx.com)

---

### Contact Us:

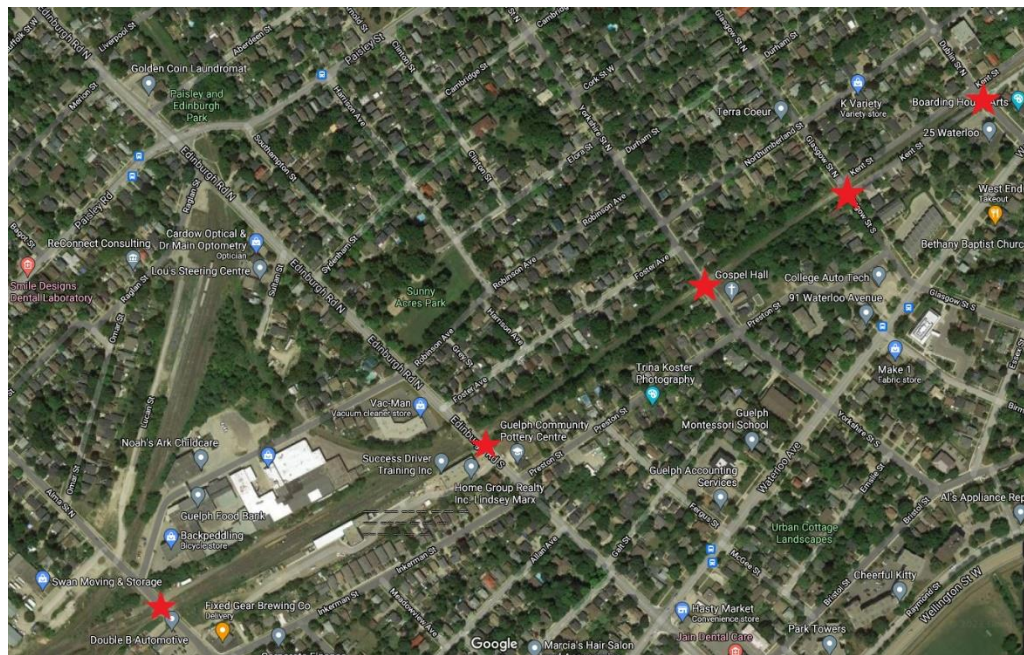
Write us at: [GuelphWellington@metrolinx.com](mailto:GuelphWellington@metrolinx.com)

Find us on Twitter @Metrolinx

Visit the website: [www.metrolinx.com/Waterloo](http://www.metrolinx.com/Waterloo)



May 25 - mid July: Trenching and cable replacement area



June-July: Level crossing upgrade locations

**Contact Us:**

Write us at: [GuelphWellington@metrolinx.com](mailto:GuelphWellington@metrolinx.com)  
Find us on Twitter @Metrolinx  
Visit the website: [www.metrolinx.com/Waterloo](http://www.metrolinx.com/Waterloo)