

Macdonell and Allan Structures Municipal Class Environmental Assessment Studies

Long List to Short List Workshop – Information Package

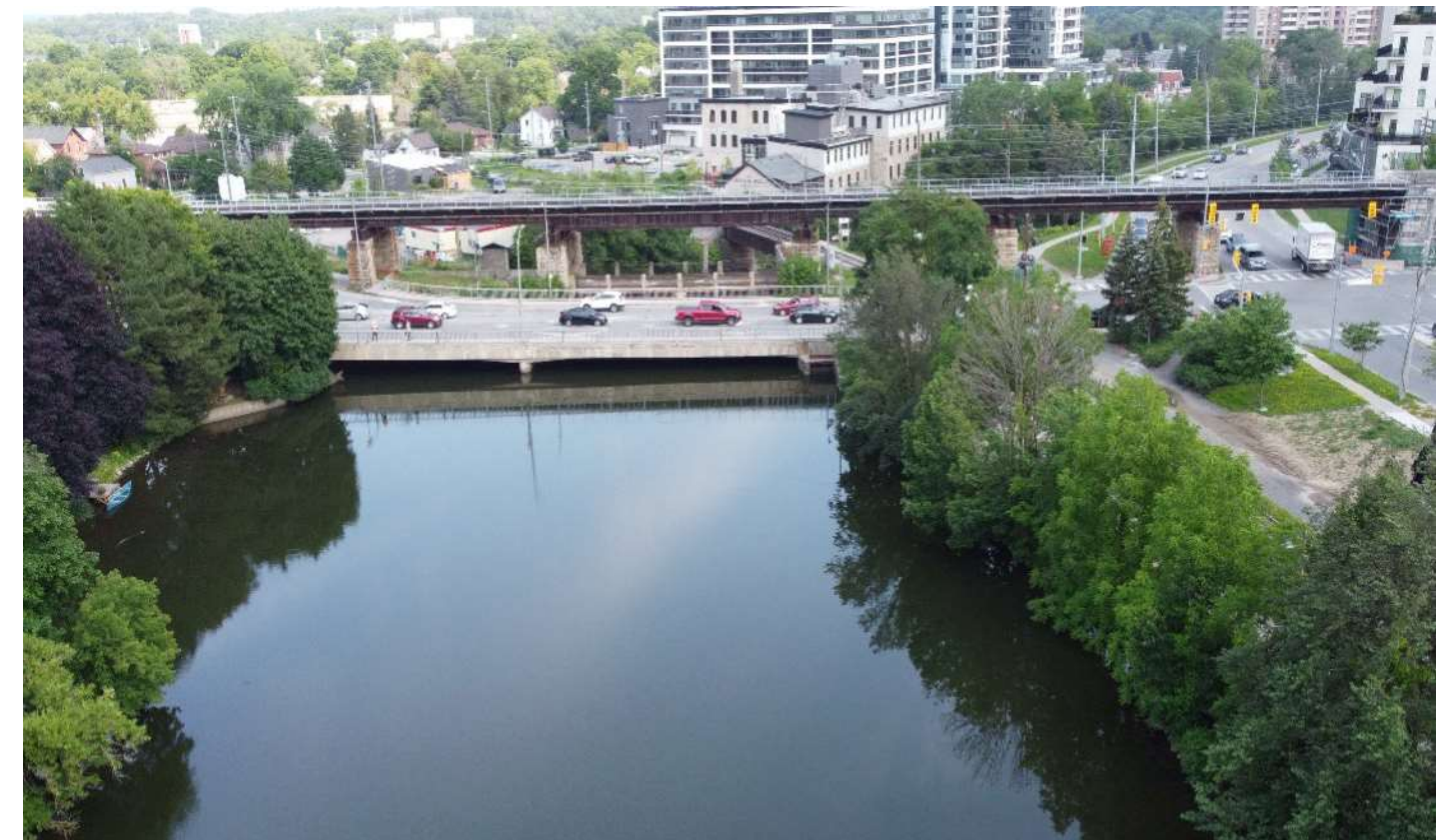
February 23, 2023



Creating a place for everyone.

Macdonell Bridge Long List

- 1. Do Nothing:** No improvements.
- 2. Rehabilitate the Bridge:** Undertake repairs to the existing bridge.
- 3. Replace the Bridge**
 - a) Replacement of the entire bridge.
 - b) Replacement of the superstructure (deck, railing etc.), and rehabilitation of the substructure (piers, abutments etc.).
- 4. Keep Existing Bridge for Pedestrians and Cyclists Only:** Close bridge to vehicular traffic. Bridge becomes pedestrian and cyclist crossing only.
- 5. Remove Bridge:** Remove the bridge and redirect vehicular, pedestrian and cyclist traffic to other crossings.



2a) Macdonell Bridge Aerial View



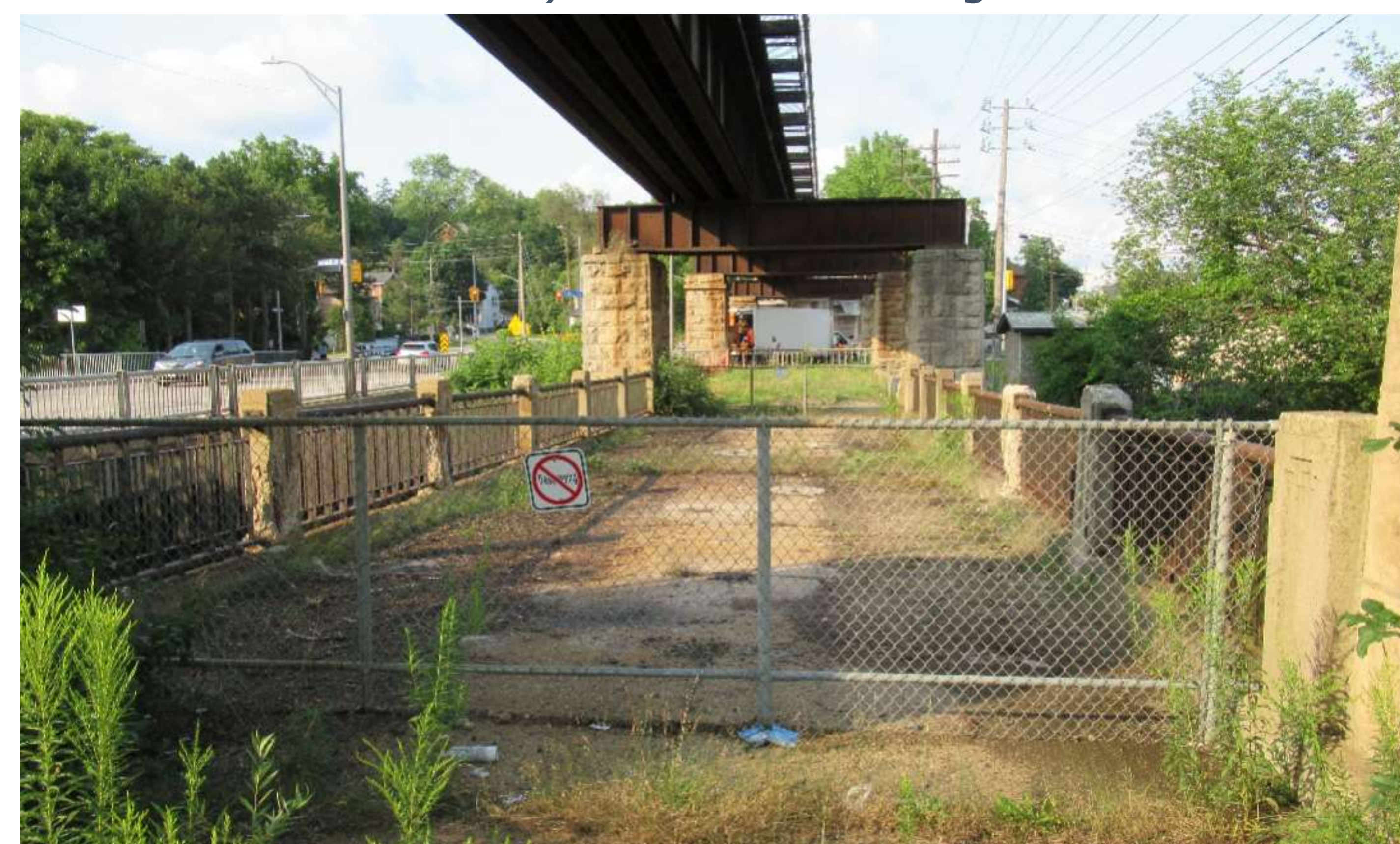
2b) Macdonell Bridge

Allans Dam Bridge Long List

1. **Do Nothing:** No improvements. Bridge continues to deteriorate.
2. **Rehabilitate Bridge for Pedestrians & Cyclists:** Fix the bridge where it is deteriorating and re-open for pedestrians and cyclists only.
3. **Replace Bridge for Pedestrians & Cyclists:** Replacement of the structure with a new bridge for pedestrians and cyclists only
4. **Remove Bridge:** Permanent closure and removal of the bridge.



3a) Allans Dam Bridge



3b) Allans Dam Bridge Closure

Allans Dam Sluiceway & Spillway Long List

1. **Do Nothing:** No improvements. Sluiceway and spillway continue to deteriorate.
2. **Rehabilitate Sluiceway and Spillway:** Undertake necessary repairs to the existing sluiceway and spillway.
3. **Remove Sluiceway and Rehabilitate Spillway:** Speed River elevation continues to be controlled by existing spillway, with no sluiceway operations.
4. **Remove Sluiceway and Spillway:** Complete removal of the existing sluiceway and spillway. Speed River elevation is no longer controlled.
5. **Remove Sluiceway and Spillway**
 - a) **Build a New Dam Upstream:** Speed River elevation is controlled by a new dam.
 - b) **Build a New Dam Upstream with an Active Transportation Underpass*:** Construction of a new active transportation underpass connecting the Trans Canada Rail Trail underneath the Macdonell Bridge. Speed River elevation is controlled by a new dam.

* Added to long list following feedback at PIC #1



4a) The sluiceway is a concrete channel with a metal gate to carry excess water.



4b) The spillway forms a weir to control the Speed River elevation, previously used for the now-removed Allan's Mill.