

LEGEND:

DECIDUOUS TREE	CONIFEROUS TREE									
EXISTING ELEVATION	PROPOSED ELEVATION									
PROPOSED TOP OF WALL	PROPERTY BOUNDARY									
BELL PEDESTAL	TV PEDESTAL	FIRE HYDRANT	TRANSFORMER PAD	SANITARY SEWER	WATERMAIN	STORM SEWER	FENCELINE	TOP OF BANK	E/ONE SEWAGE EJECTOR	RETAINING WALL
BELL	TV	FIRE HYDRANT	TRANSFORMER PAD	SANITARY SEWER	WATERMAIN	STORM SEWER	FENCELINE	TOP OF BANK	E/ONE SEWAGE EJECTOR	RETAINING WALL
CATCHBASIN	MANHOLE	STREET LIGHT	DITCH INLET CATCHBASIN	CATCHBASIN	MANHOLE	STREET LIGHT	DITCH INLET CATCHBASIN	CATCHBASIN	MANHOLE	STREET LIGHT

THE POSITION OF POLES, LINES, CONDUITS, WATERMANS, SEWERS AND OTHER UNDERGROUND UTILITIES AND STRUCTURES IS NOT NECESSARILY SHOWN ON THE CONTRACT DRAWINGS, AND WHERE SHOWN, THE ACCURACY OF THE POSITION OF SUCH UTILITIES AND STRUCTURES IS NOT GUARANTEED. BEFORE STARTING WORK, THE CONTRACTOR SHALL INFORM HIMSELF OF THE EXACT LOCATION OF ALL SUCH UTILITIES AND STRUCTURES, AND SHALL ASSUME ALL LIABILITY FOR DAMAGE TO THEM.

No.	DATE	DESCRIPTION	BY:	CHKD.
2	MAR 20 2010	2ND SUBMISSION		

ISSUES/REVISIONS

Van Harten
SURVEYING INC.
LAND SURVEYORS and ENGINEERS

423 WOOLWICH STREET GUELPH - ONTARIO, N1H 3K3
PHONE: (519) 821-2763
FAX: 821-2770
www.vanharten.com

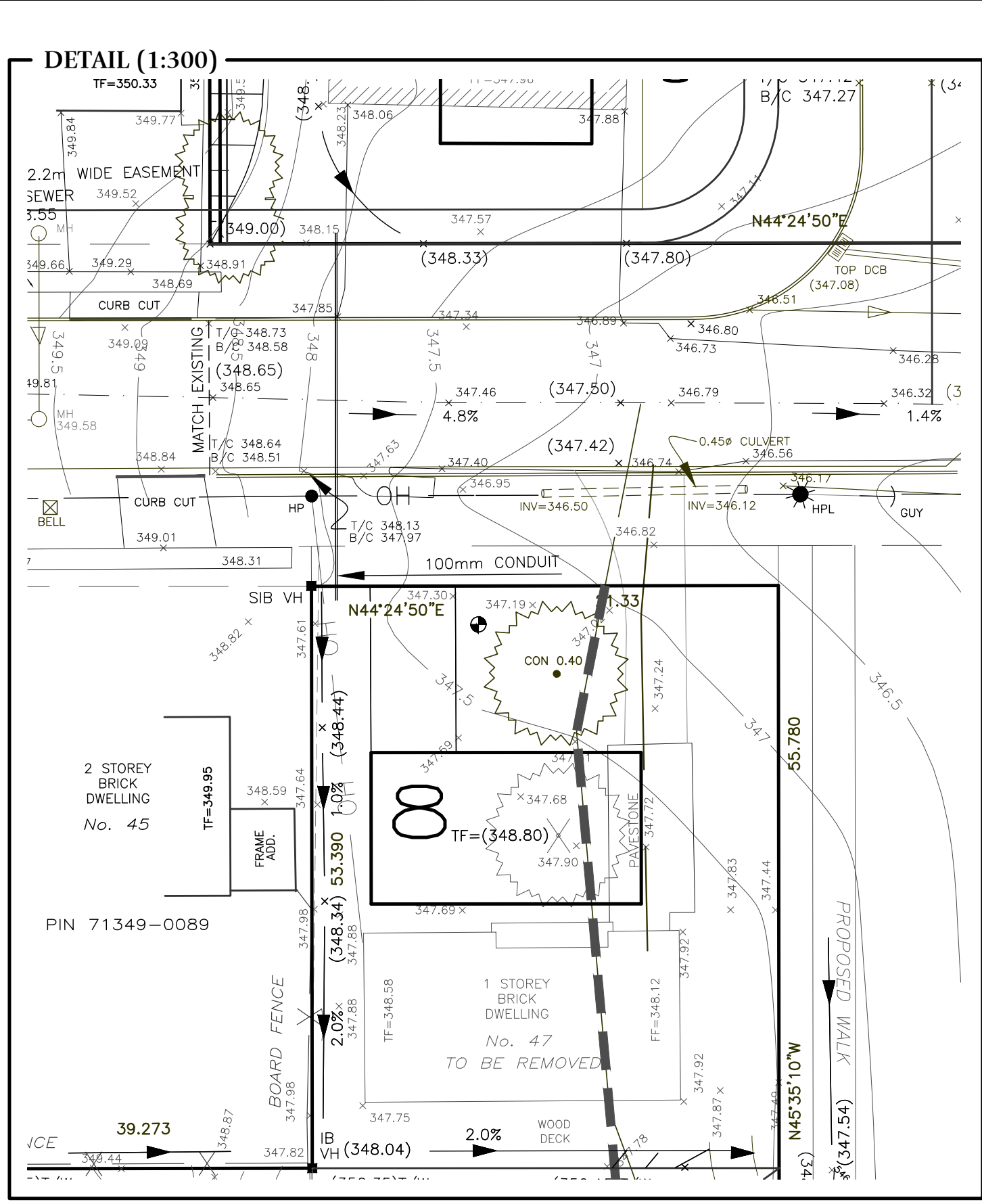
660 RIDDELL ROAD, UNIT 1 ORANGEVILLE - ONTARIO, L9W 5G5
PHONE: (519) 940-4110
FAX: 519-940-4113
www.vanharten.com



GLENBURNIE DRIVE EXTENSION
CITY OF GUELPH
COUNTY OF WELLINGTON

GRADING & SERVICING PLAN

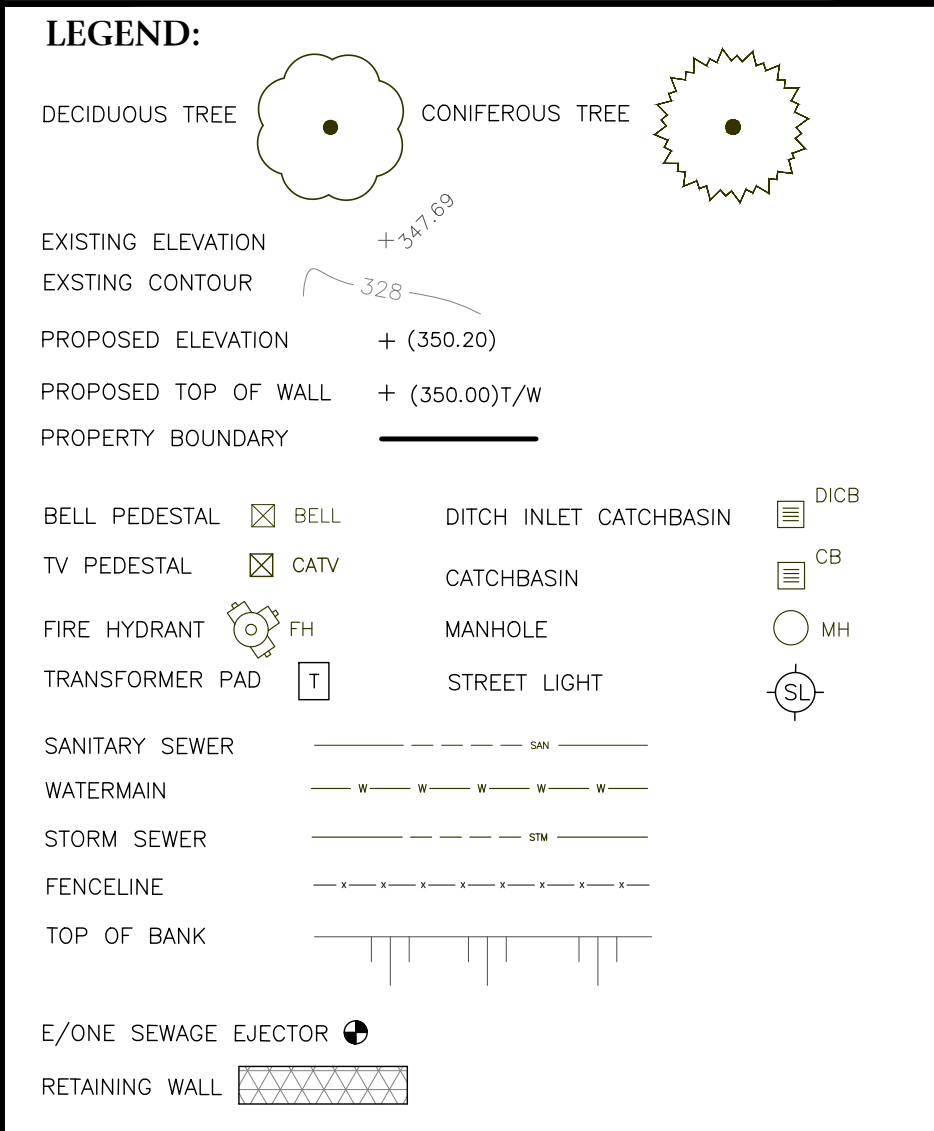
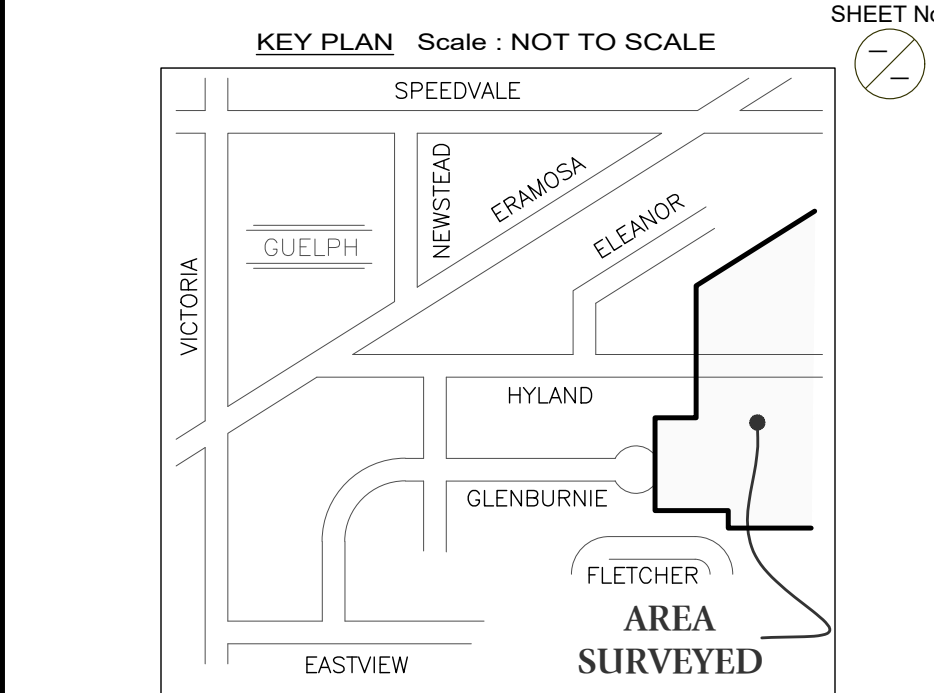
SCALE:	1:300	CONSULTANT DRAWING No.	1 OF 2
DATE DRAWN:	MARCH 20, 2010	CITY CONTRACT No.	
DRAWN BY:	JLW	CITY REFERENCE No.	
CHECKED BY:	JMD	REV.	



ELEANOR COURT

STREET A

HYLAND ROAD



NOTE: 8 TO 16 WILL BE BUILT WITH NO BASEMENTS

THE POSITION OF POLES, LINES, CONDUITS, WATERMANS, SEWERS AND OTHER UNDERGROUND UTILITIES AND STRUCTURES IS NOT NECESSARILY SHOWN ON THE CONTRACT DRAWINGS, AND WHERE SHOWN, THE ACCURACY OF THE POSITION OF SUCH UTILITIES AND STRUCTURES IS NOT GUARANTEED. BEFORE STARTING WORK, THE CONTRACTOR SHALL INFORM HIMSELF OF THE EXACT LOCATION OF ALL SUCH UTILITIES AND STRUCTURES, AND SHALL ASSUME ALL LIABILITY FOR DAMAGE TO THEM.

No.	DATE	DESCRIPTION	BY:	CHKD.
2	MAR 20/11	2ND SUBMISSION		

ISSUES/REVISIONS

Van Harten
SURVEYING INC.
LAND SURVEYORS AND ENGINEERS

423 WOOLWICH STREET GUELPH - ONTARIO, N1H 3K3
PHONE: (519) 821-2763
FAX: 821-2770
www.vanharten.com

660 RIDDELL ROAD, UNIT 1 ORANGEVILLE - ONTARIO, L9W 5G5
PHONE: (519) 940-4110
FAX: 519-940-4113
www.vanharten.com

CITY OF Guelph
ENGINEERING SERVICES

HYLAND ROAD EXTENSION
CITY OF GUELPH
COUNTY OF WELLINGTON

GRADING & SERVICING PLAN

SCALE:	1:300	CONSULTANT DRAWING No.	2 OF 2
DATE DRAWN:	MARCH 20, 2011	CITY CONTRACT No.	
DRAWN BY:	JLW	CITY REFERENCE No.	
CHECKED BY:	JMD	REV.	