

HAMMILL PARK FACILITY FIT OPTION - GREEN FLOW

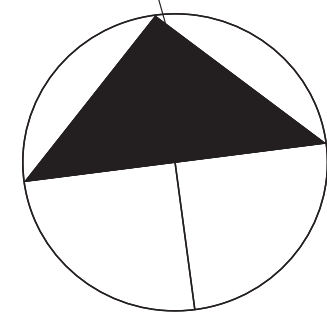
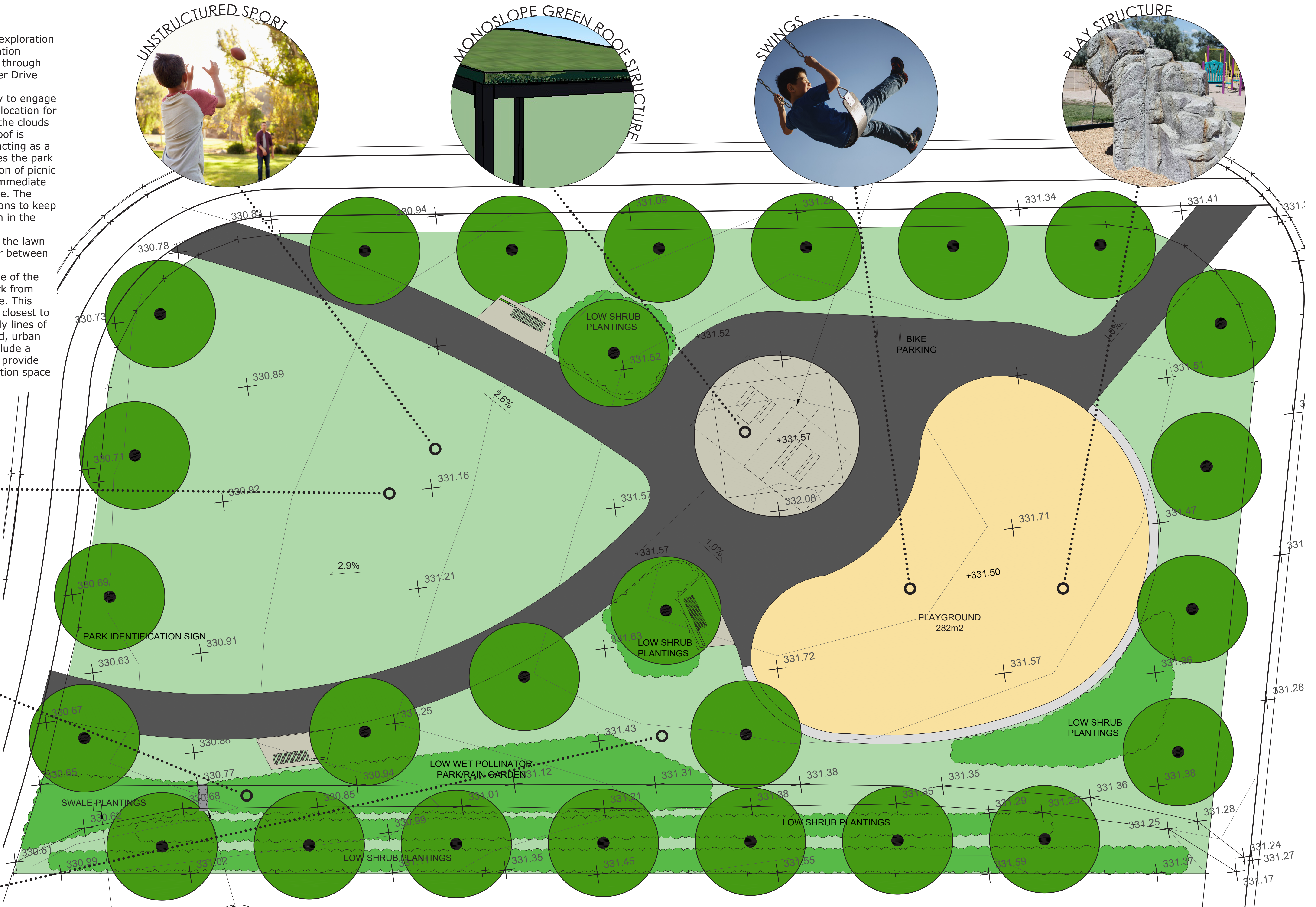
NOT TO SCALE May 7, 2021

The green flow concept promotes natural exploration and discovery in Hammill Park. The circulation system provides multiple options to move through the space and has incorporated the Skinner Drive sidewalk.

The spacious lawn provides an opportunity to engage in unstructured sport as well as provide a location for picnicking or simply laying back to watch the clouds go by. The shade structure with a green roof is situated at the highest point in the park, acting as a friendly welcoming sight as one approaches the park and providing a prospect point. The addition of picnic tables provide a gathering space and an immediate refuge from the sun while the trees mature. The central location allows parents and guardians to keep an eye on children no matter their location in the park.

The playground is set to the opposite side the lawn with the shade structure acting as a buffer between the two uses.

The swale running along the southern edge of the park will be used to help delineate the park from the front yards of the townhouses opposite. This area is divided into two spaces: The area closest to the townhouses will be planted with orderly lines of low growing shrubs to provide a structured, urban edge to the space. The swale itself will include a pollinator/rain garden at one end that will provide habitat as well as an unstructured exploration space for children.



- PROPOSED DECIDUOUS TREES
- PROPOSED CONCRETE PAD
- PROPOSED ASPHALT PATH
- PROPOSED SOD
- ARMOURSTONE SEAT WALL

ABOUD & ASSOCIATES INC.
 Consulting Arborists • Ecologists • Landscape Architects

