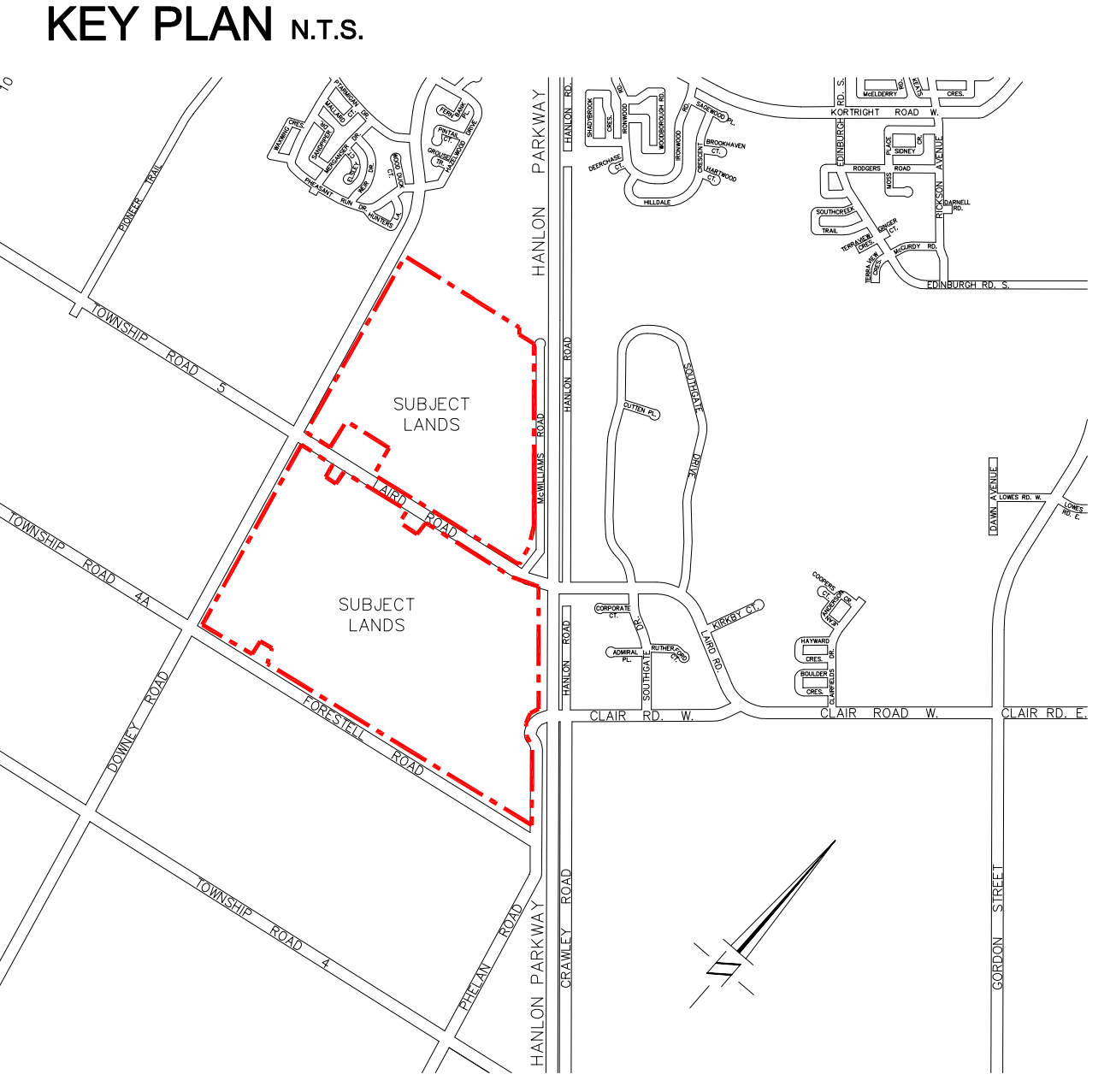


**HANLON**  
**CReek**  
 BUSINESS PARK  
*The Natural Place for Business*

**ZONING MAP**  
**DRAFT PLAN OF SUBDIVISION**  
**HANLON CREEK BUSINESS PARK**  
**23T-03501**

DATE: MAY 15, 2006 SCALE: 1:3000  
 PROJECT No.: 0581 DRAWN BY: G.K.S.



**LEGAL DESCRIPTION**  
 Part of Lots 16, 17, 18, 19, & 20, Concession 4,  
 and Part of Lots 16, 17, 18, & 19, Concession 5,  
 (Former Geographic Township of Puslinch)  
 City of Guelph

- LEGEND**
- Specialized B.2-4 (Industrial) Zone
  - Specialized B.2-4(H) Holding Zone
  - Specialized B.2-5 (Industrial) Zone
  - Specialized B.2-6 (Industrial) Zone
  - Specialized B.2-6(H) Holding Zone
  - B.5 (Corporate Business Park) Zone
  - Specialized B.5 (H23) (Corporate Business Park) Holding Zone
  - Specialized B.5-1(H) (Corporate Business Park) Holding Zone
  - Specialized B.5-2(Corporate Business Park) Zone
  - Specialized B.5-3(Corporate Business Park) Zone
  - Specialized B.5-4(Corporate Business Park) Zone
  - Specialized B.5-5(Corporate Business Park) Zone
  - R.3A (Cluster Townhouse) Zone
  - WL (Wetland) Zone
  - P.1 (Park/Conservation Land) Zone

