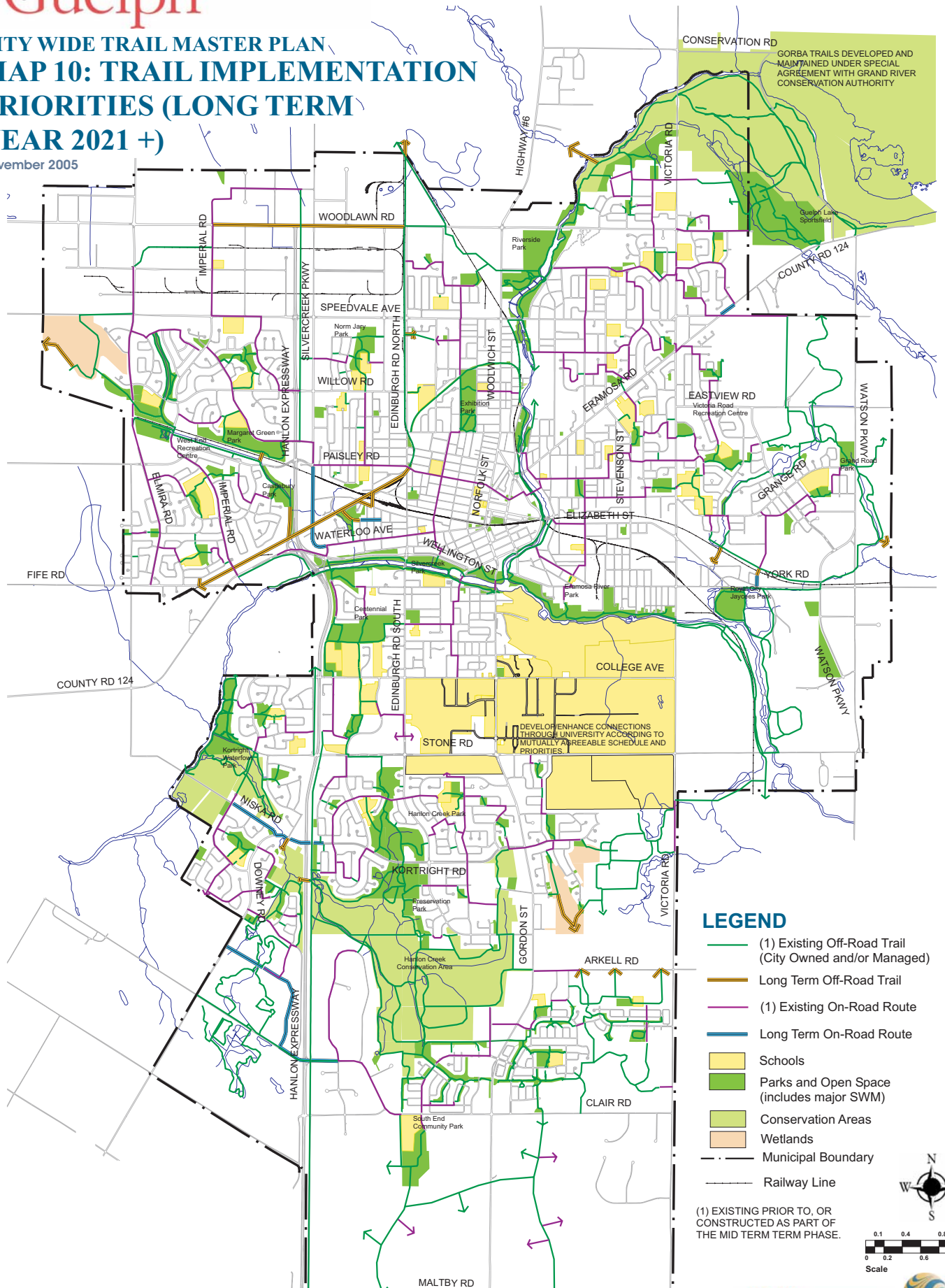


CITY WIDE TRAIL MASTER PLAN MAP 10: TRAIL IMPLEMENTATION PRIORITIES (LONG TERM YEAR 2021 +)

November 2005



This map is to be used as a planning tool. Background information depicted (e.g. land use designations) is included for illustrative purposes only. Please consult the appropriate official documents for further details. The location and exact alignment of trail routes will evolve through more detailed technical studies and/or community consultation as required. At the same time, it is important to note that the extensive community consultation that established the direction for this plan must be respected, therefore changes to the routing will be evaluated in the context of the overall network.