












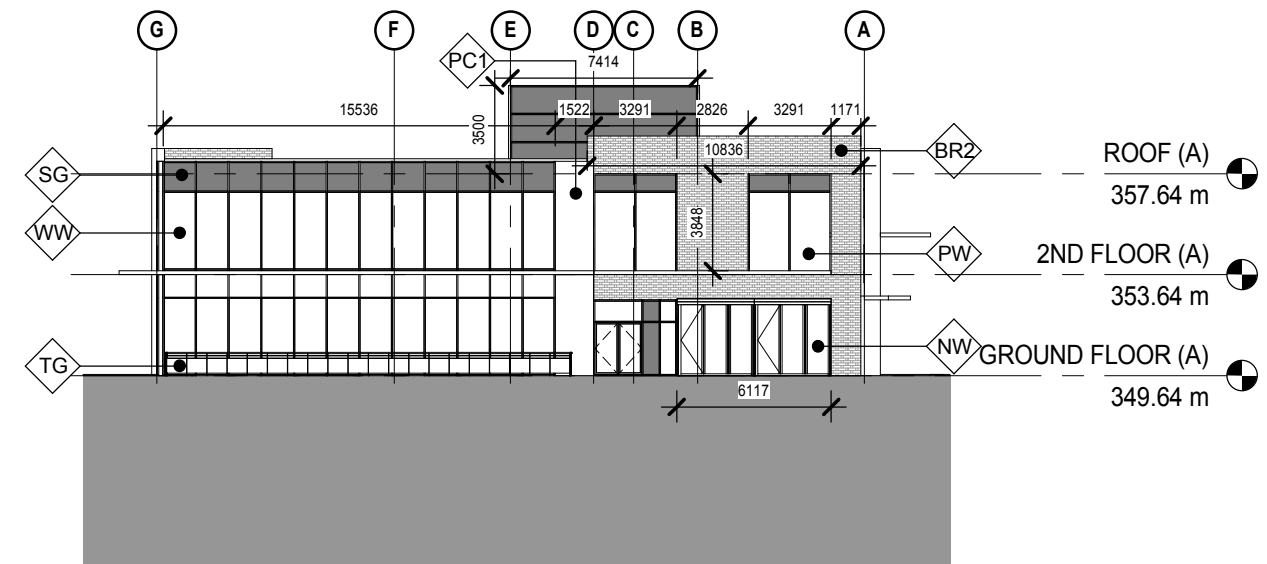


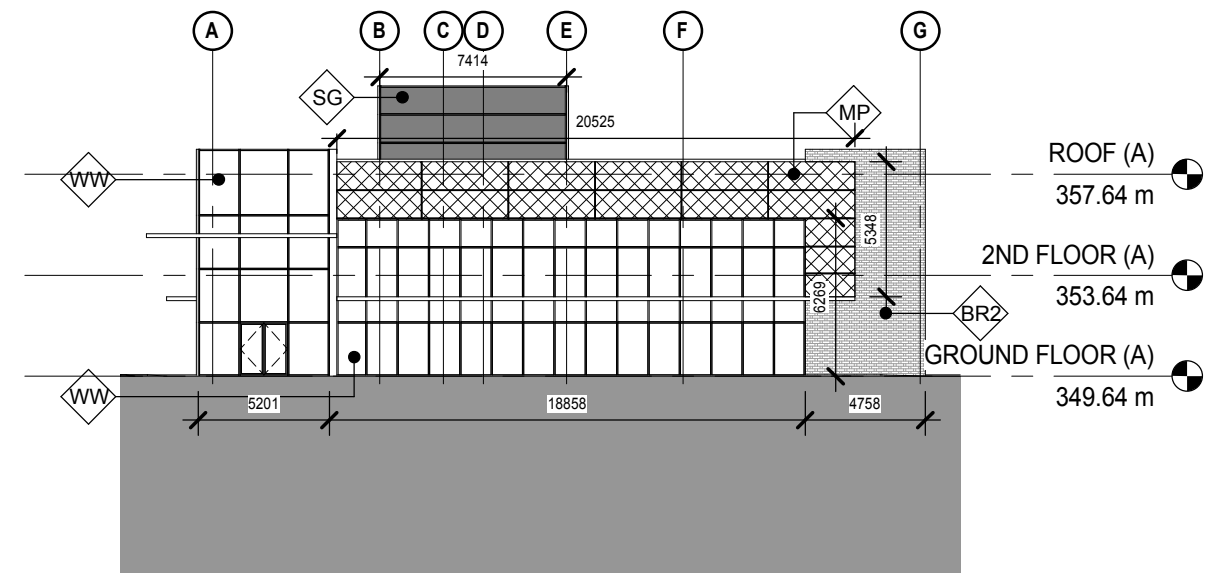
EXTERIOR FINISH LEGEND

-  BR1 BRICK VENEER - COLOUR T.B.D.
-  CP CONCRETE PLANTER - COLOUR T.B.D.
-  CPA CONCRETE - PAINTED - COLOUR T.B.D.
-  CS1 CONCRETE SLAB - COLOUR T.B.D.
-  CS2 CONCRETE SLAB - COLOUR T.B.D.
-  MC METAL CANOPY - COLOUR T.B.D.
-  MP METAL PANELS - COLOUR T.B.D.
-  PC1 PRECAST CONCRETE - COLOUR T.B.D.
-  PC2 PRECAST CONCRETE - COLOUR T.B.D.
-  PW PUNCHED WINDOWS - COLOUR T.B.D. FRAMES
-  SG SPANDREL GLASS - COLOUR T.B.D.
-  TG TEMPERED GLASS RAILING
-  WW WINDOW WALL - T.B.D. FRAMES

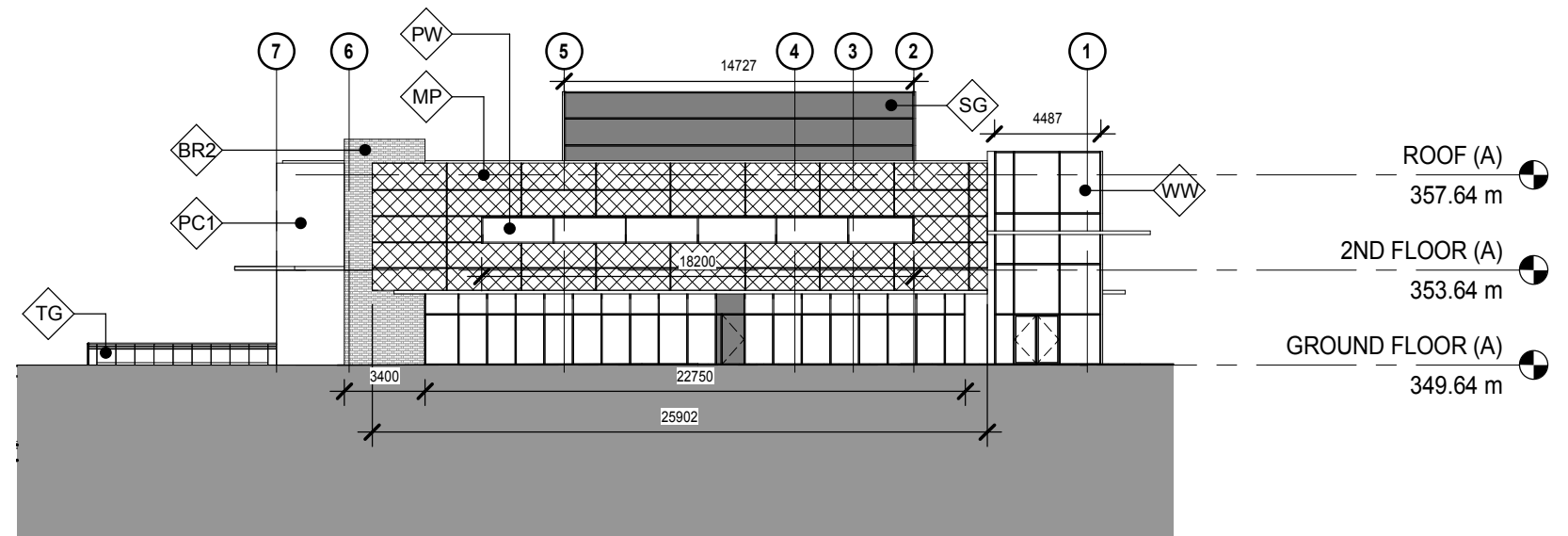
AMENITY - EAST ELEVATION 1 300



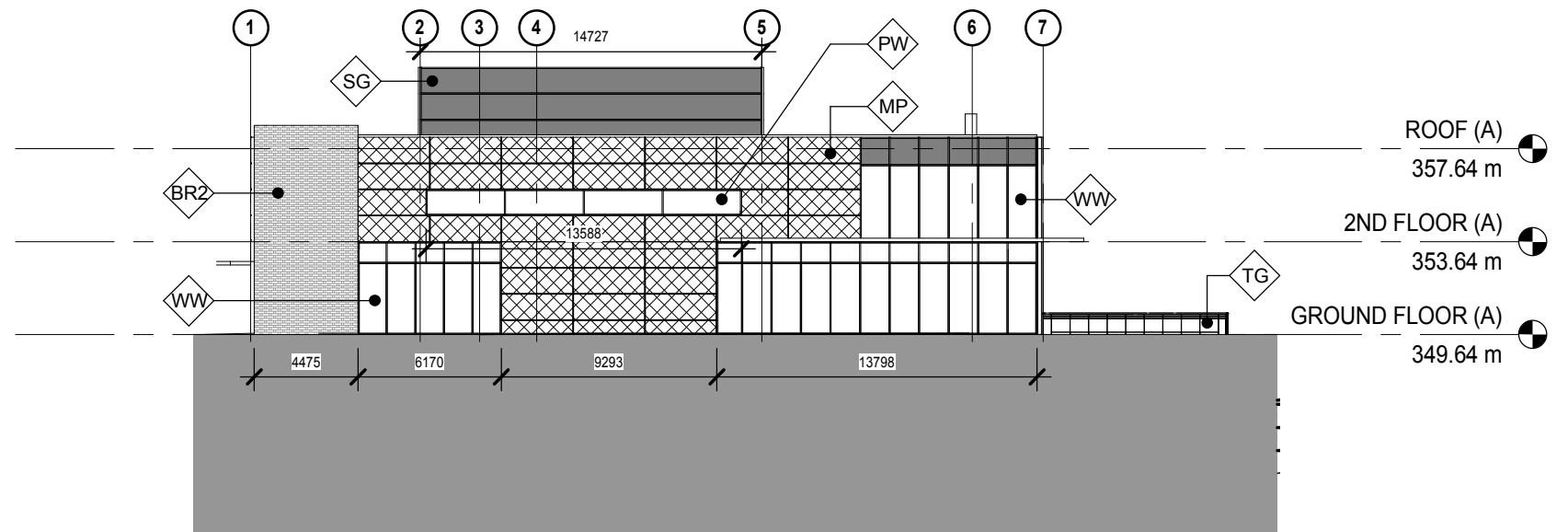
AMENITY - WEST ELEVATION 1 300

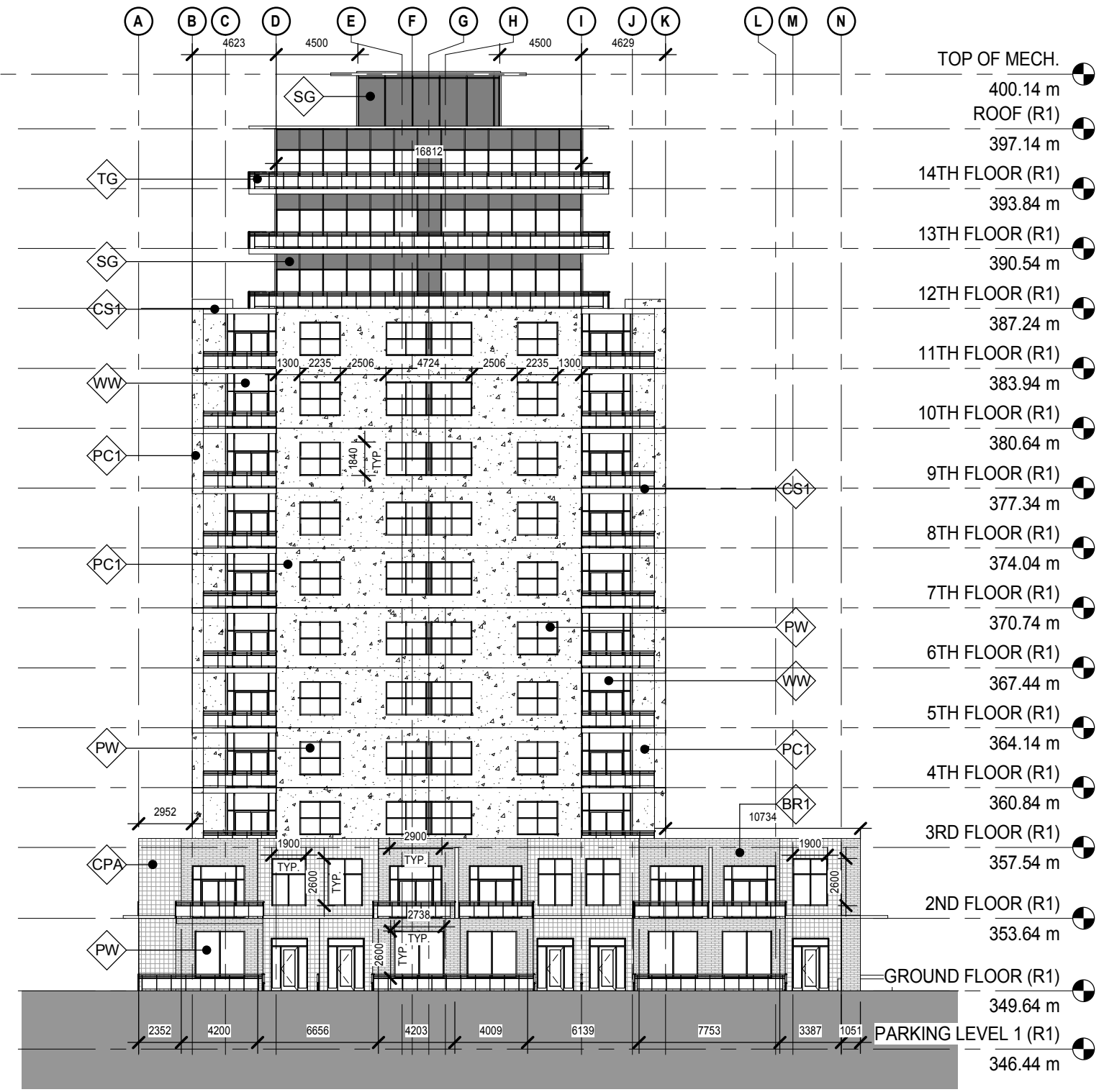
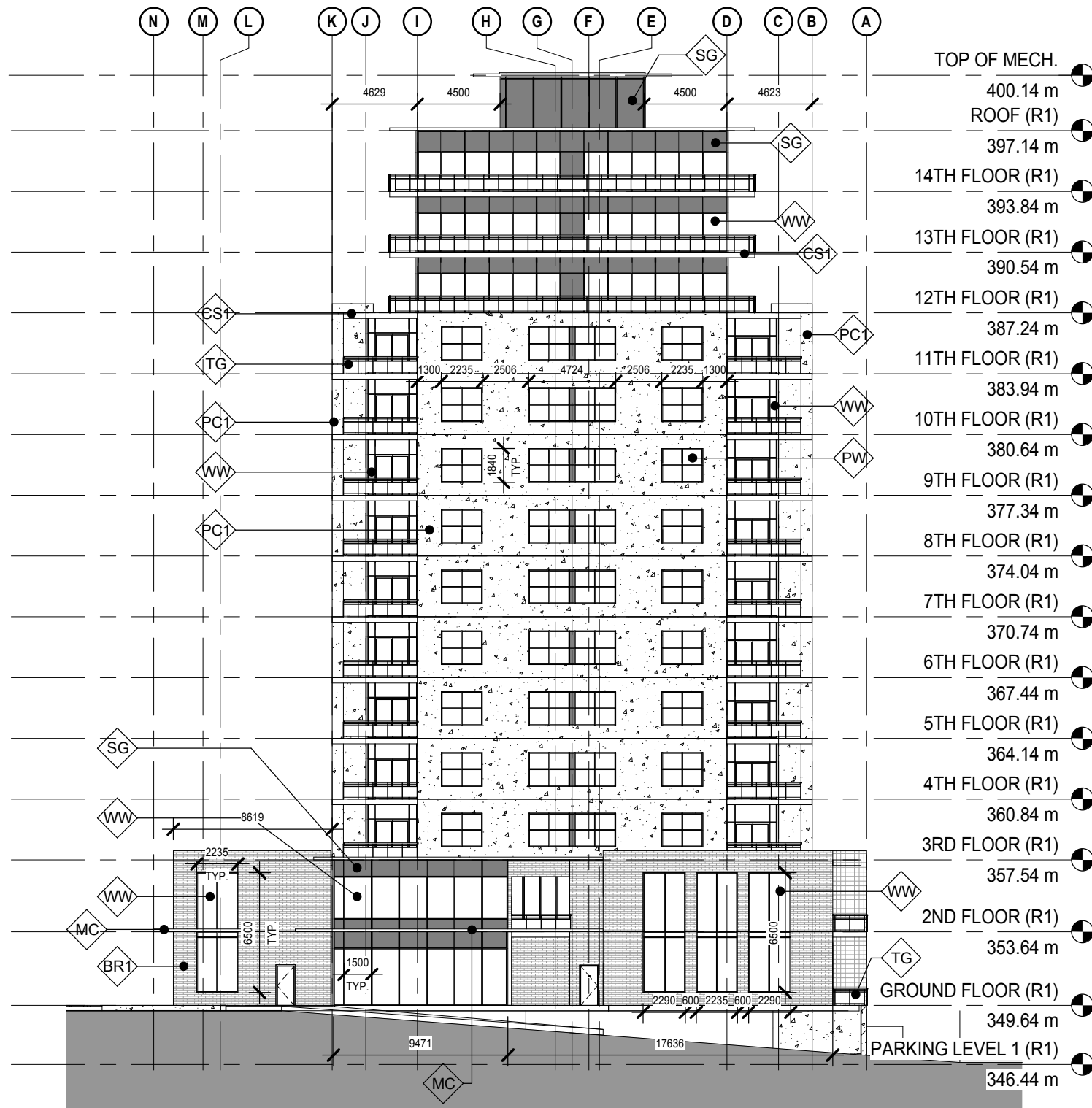


AMENITY - NORTH ELEVATION 1 300



AMENITY - SOUTH ELEVATION 1 300





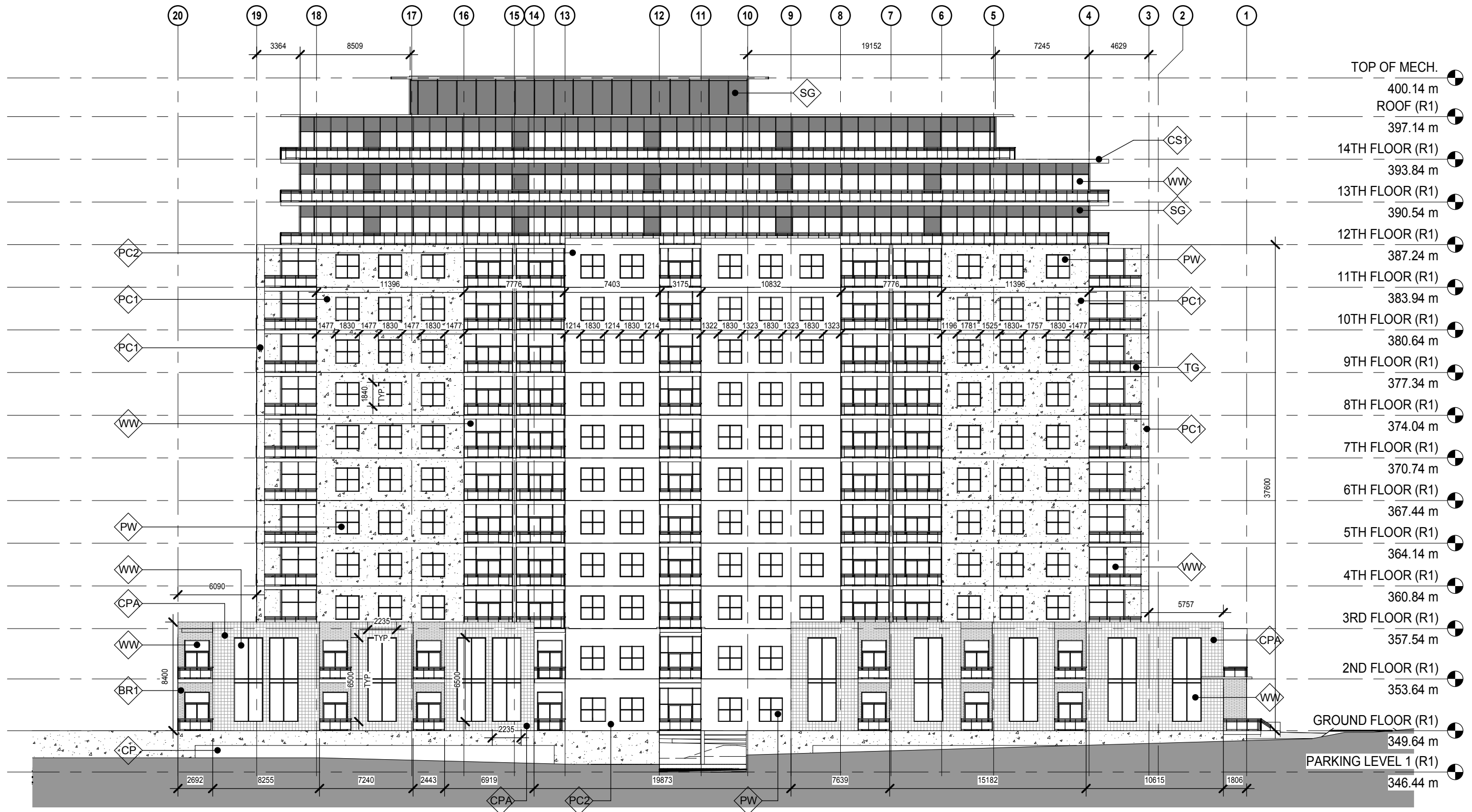
RES 1 - EAST ELEVATION

RES 1 - WEST ELEVATION

RES 1 - EAST & WEST ELEVATIONS
 GORDON ST. MASTERPLAN
 Guelph, Ontario

A2-03
 2017-12-19
 PROJECT 180271



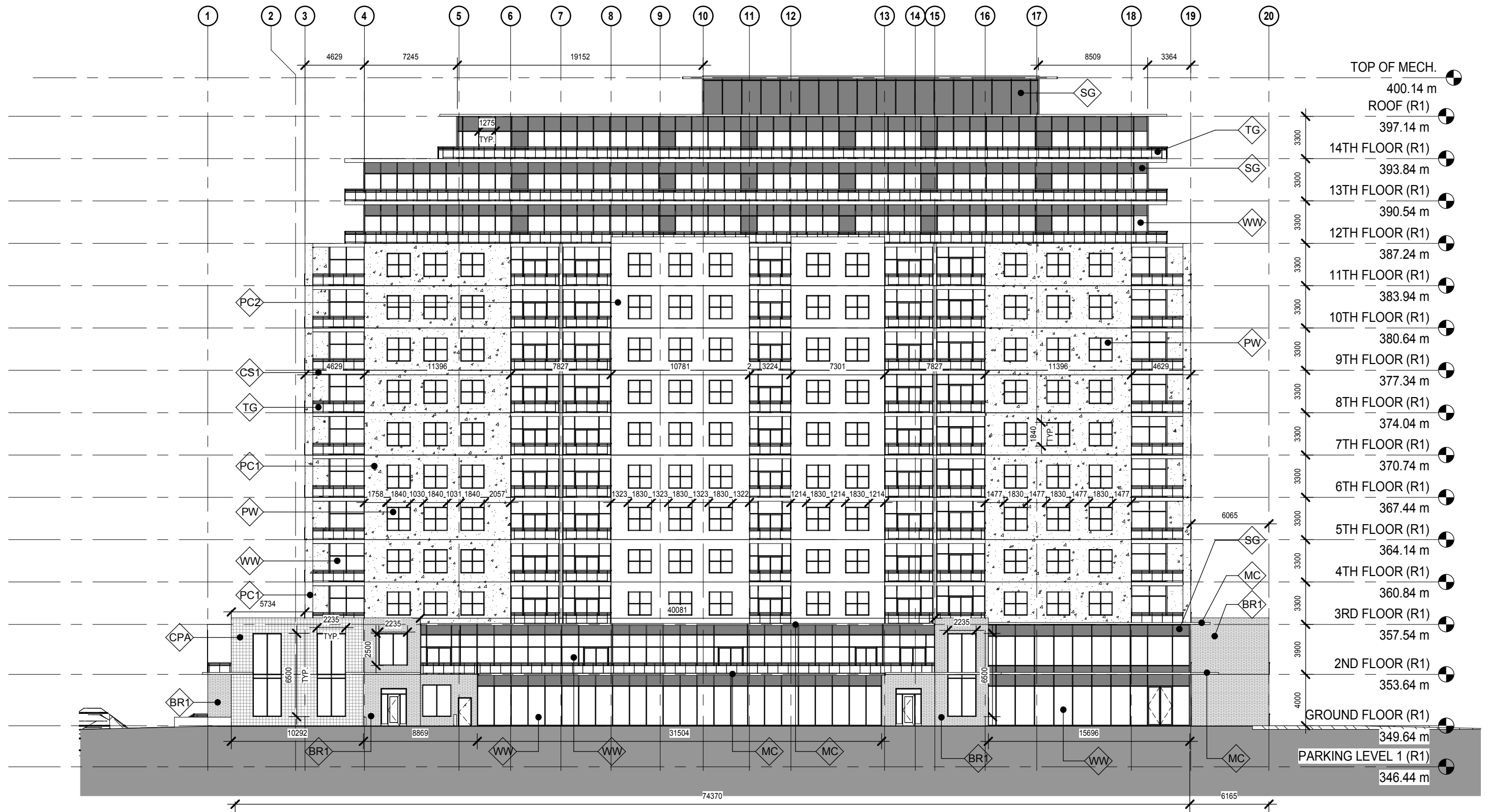


- TOP OF MECH. 400.14 m
- ROOF (R1) 397.14 m
- 14TH FLOOR (R1) 393.84 m
- 13TH FLOOR (R1) 390.54 m
- 12TH FLOOR (R1) 387.24 m
- 11TH FLOOR (R1) 383.94 m
- 10TH FLOOR (R1) 380.64 m
- 9TH FLOOR (R1) 377.34 m
- 8TH FLOOR (R1) 374.04 m
- 7TH FLOOR (R1) 370.74 m
- 6TH FLOOR (R1) 367.44 m
- 5TH FLOOR (R1) 364.14 m
- 4TH FLOOR (R1) 360.84 m
- 3RD FLOOR (R1) 357.54 m
- 2ND FLOOR (R1) 353.64 m
- GROUND FLOOR (R1) 349.64 m
- PARKING LEVEL 1 (R1) 346.44 m

RES 1 - NORTH ELEVATION
 GORDON ST. MASTERPLAN
 Guelph, Ontario

A2-04
 2017-12-19
 PROJECT 180271

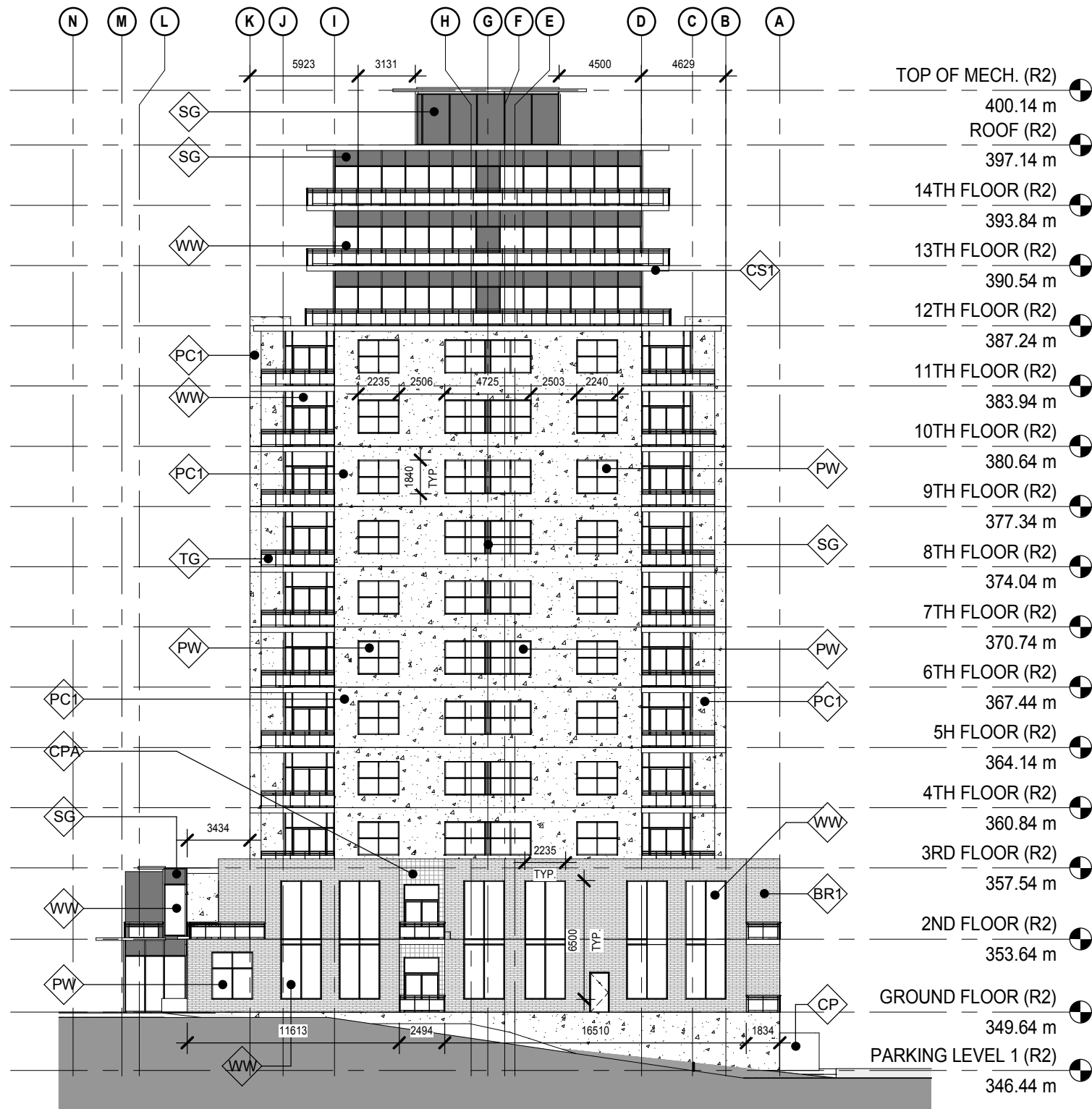




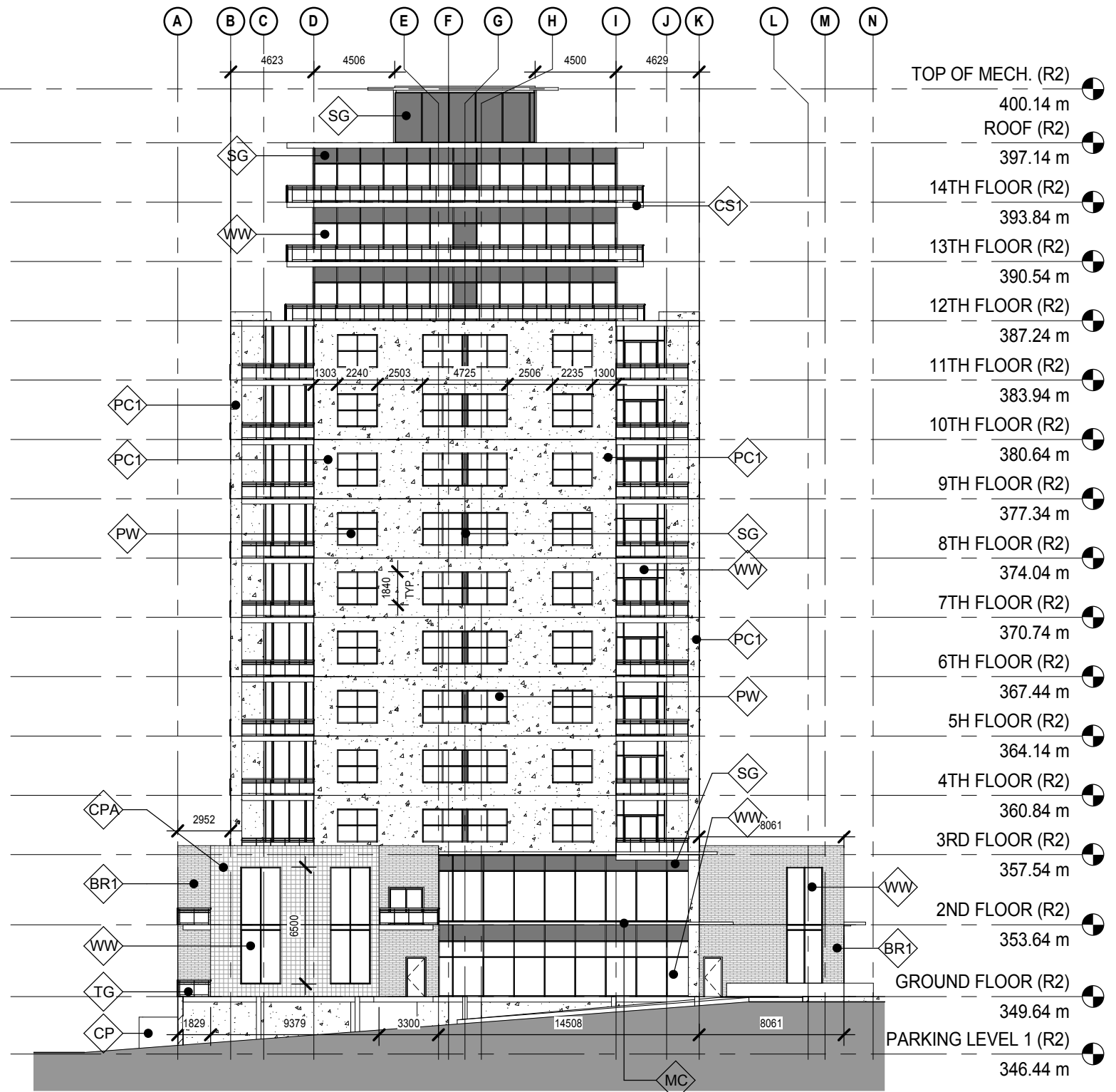
RES 1 - SOUTH ELEVATION
GORDON ST. MASTERPLAN
 Guelph, Ontario

A2-05
 2017-12-19
 PROJECT 180271





RES 2 - EAST ELEVATION

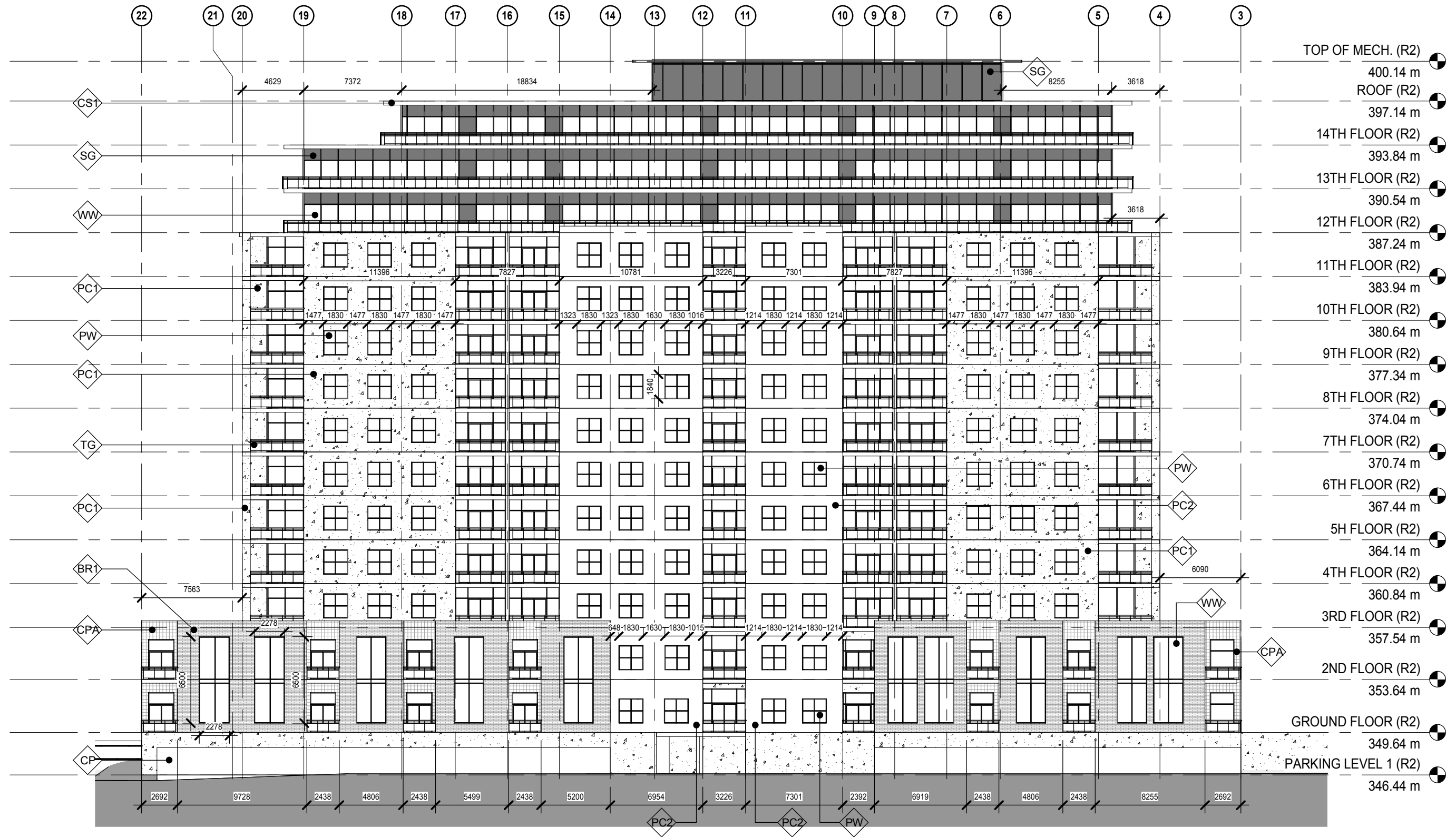


RES 2 - WEST ELEVATION

RES 2 - EAST & WEST ELEVATION
 GORDON ST. MASTERPLAN
 Guelph, Ontario

A2-06
 2017-12-19
 PROJECT 180271

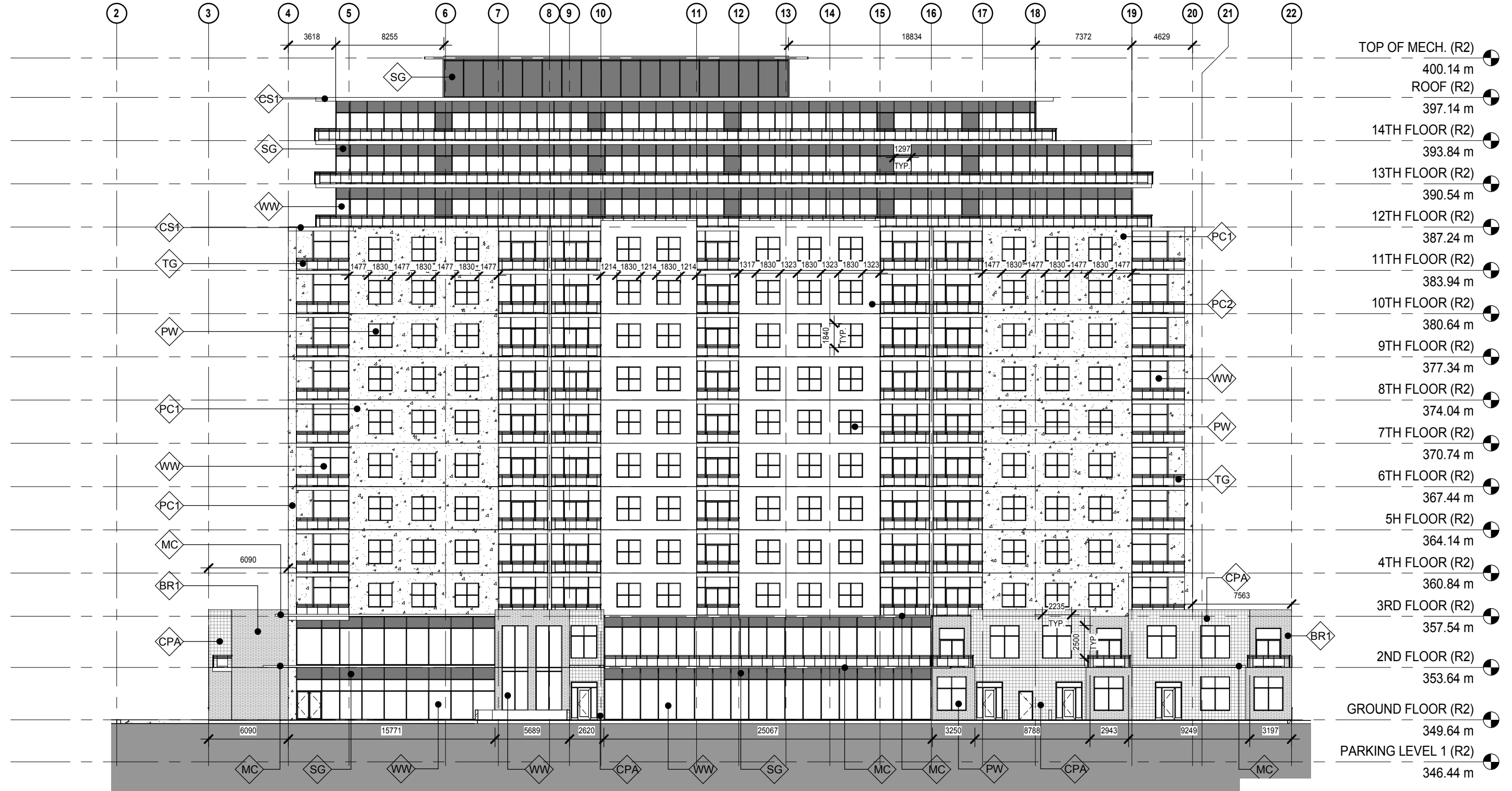




RES 2 - NORTH ELEVATION
 GORDON ST. MASTERPLAN
 Guelph, Ontario

A2-07
 2017-12-19
 PROJECT 180271

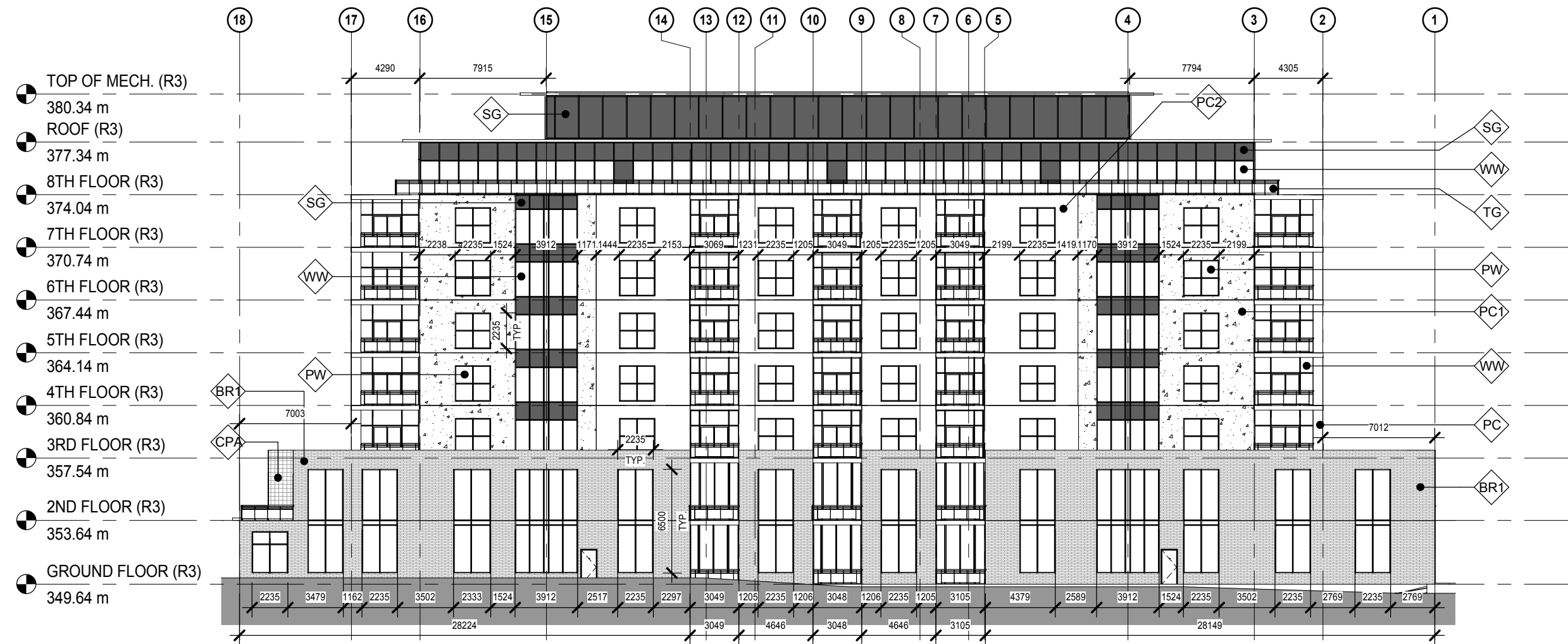




RES 2 - SOUTH ELEVATION
 GORDON ST. MASTERPLAN
 Guelph, Ontario

A2-08
 2017-12-19
 PROJECT 180271

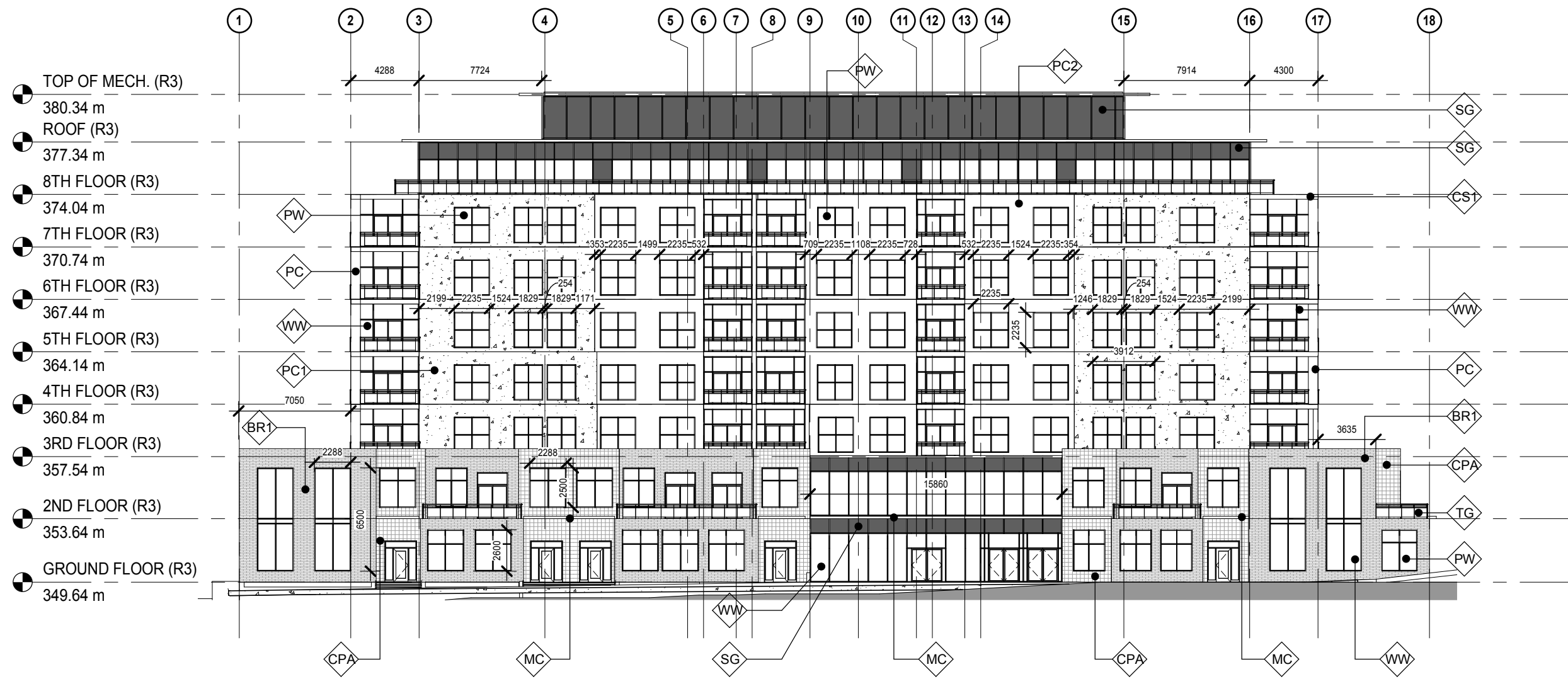




RES 3 - EAST ELEVATIONS
 GORDON ST. MASTERPLAN
 Guelph, Ontario

A2-09
 2017-12-19
 PROJECT 180271

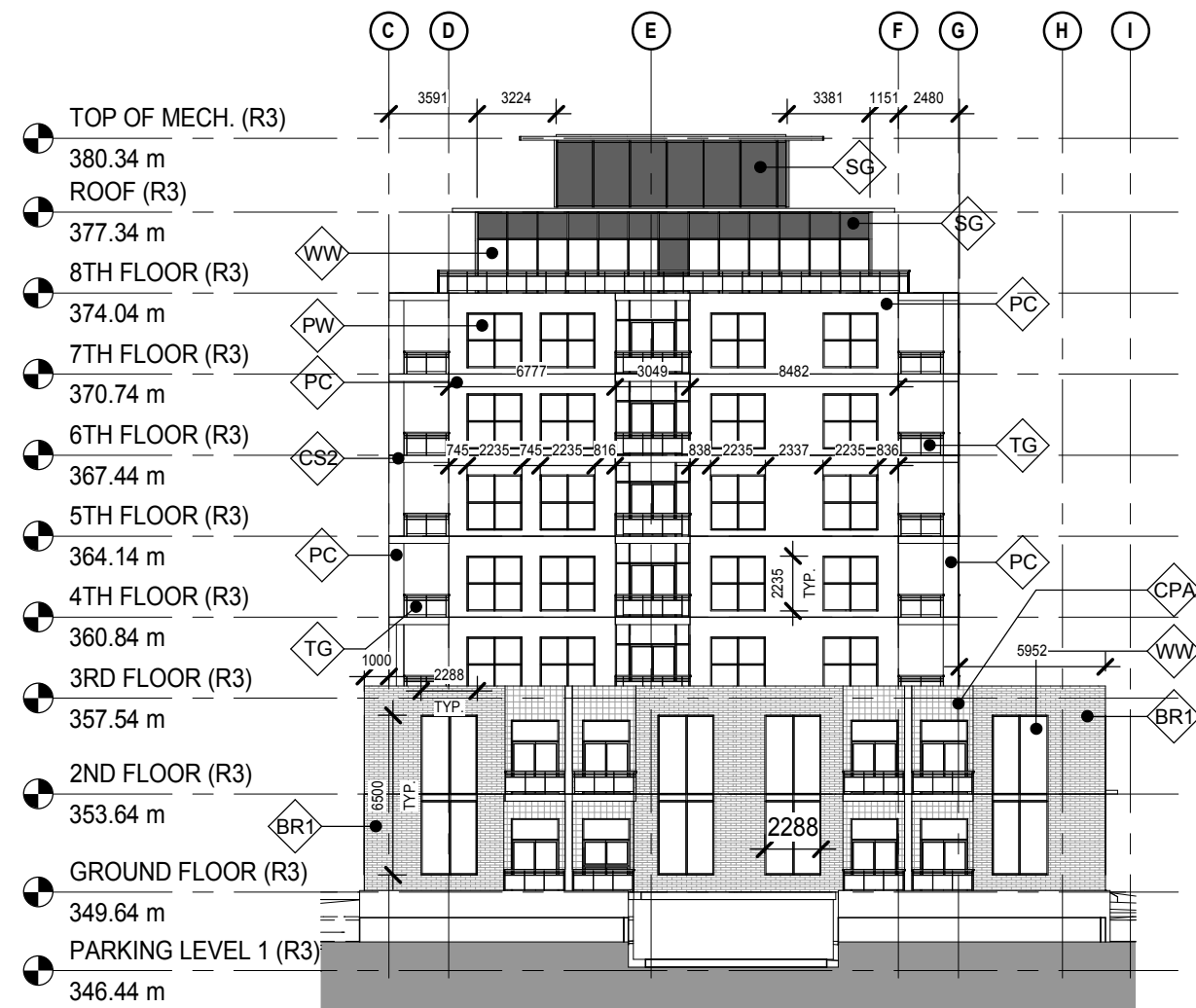




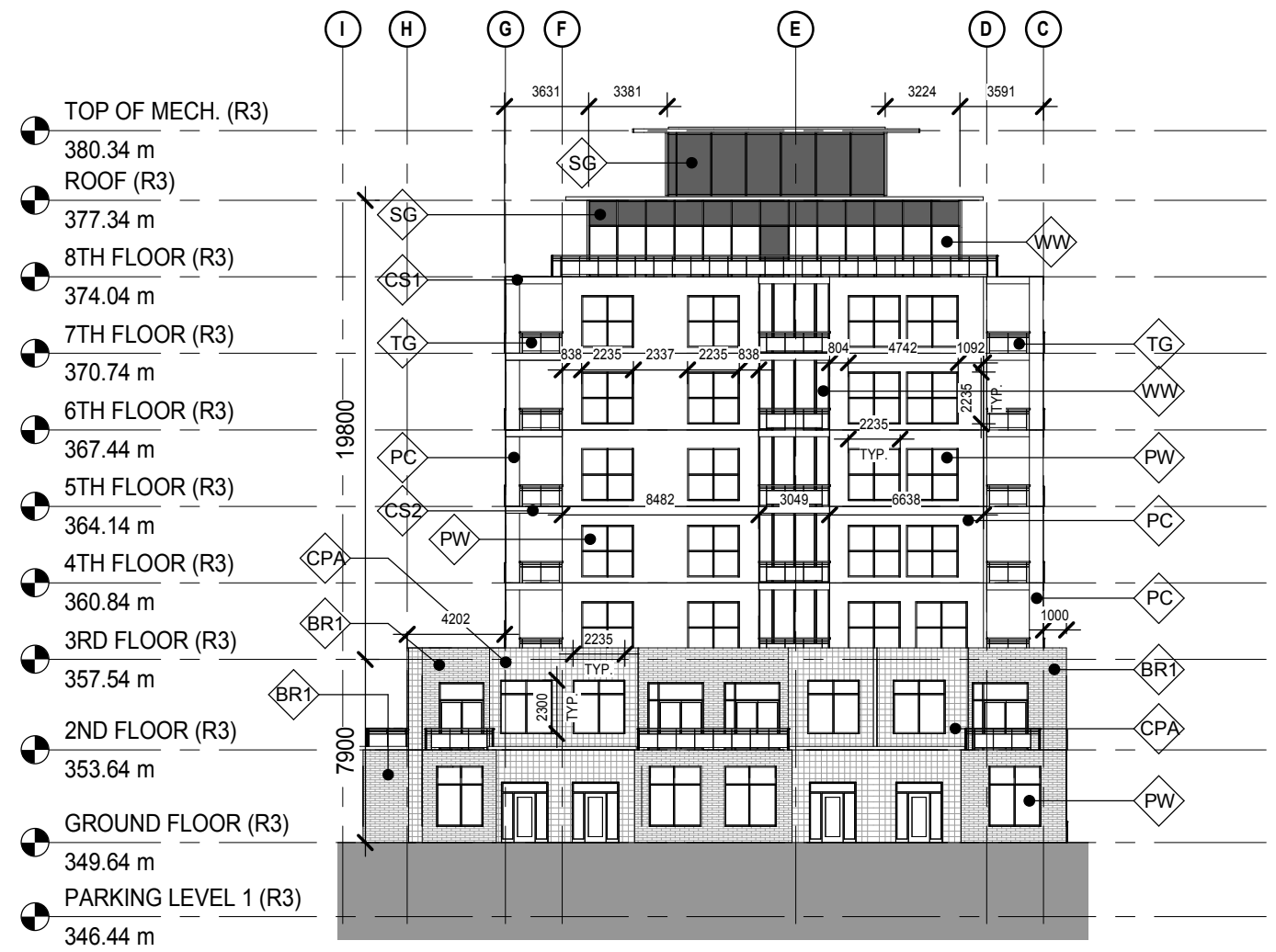
RES 3 - WEST ELEVATION
 GORDON ST. MASTERPLAN
 Guelph, Ontario

A2-10
 2017-12-19
 PROJECT 180271

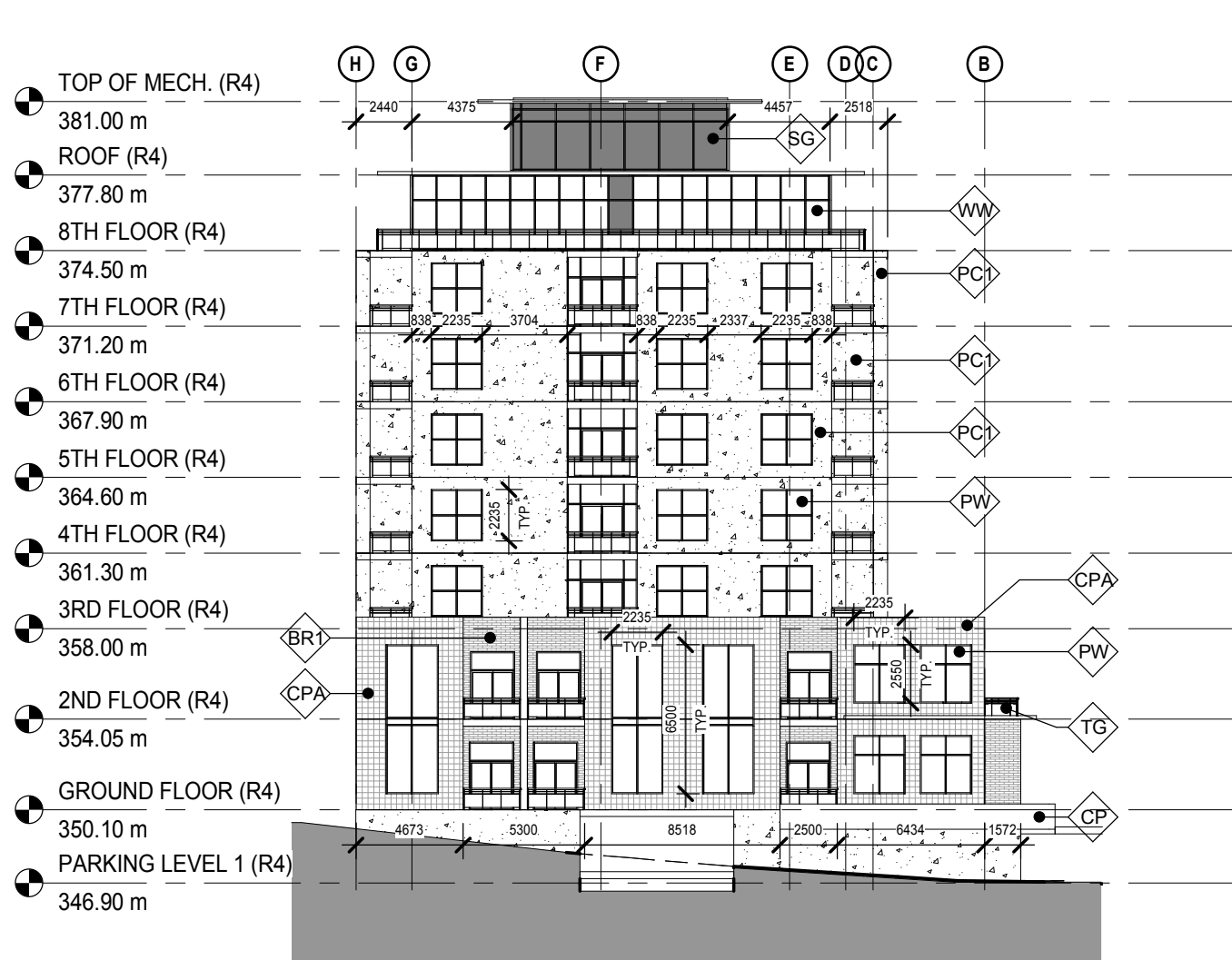




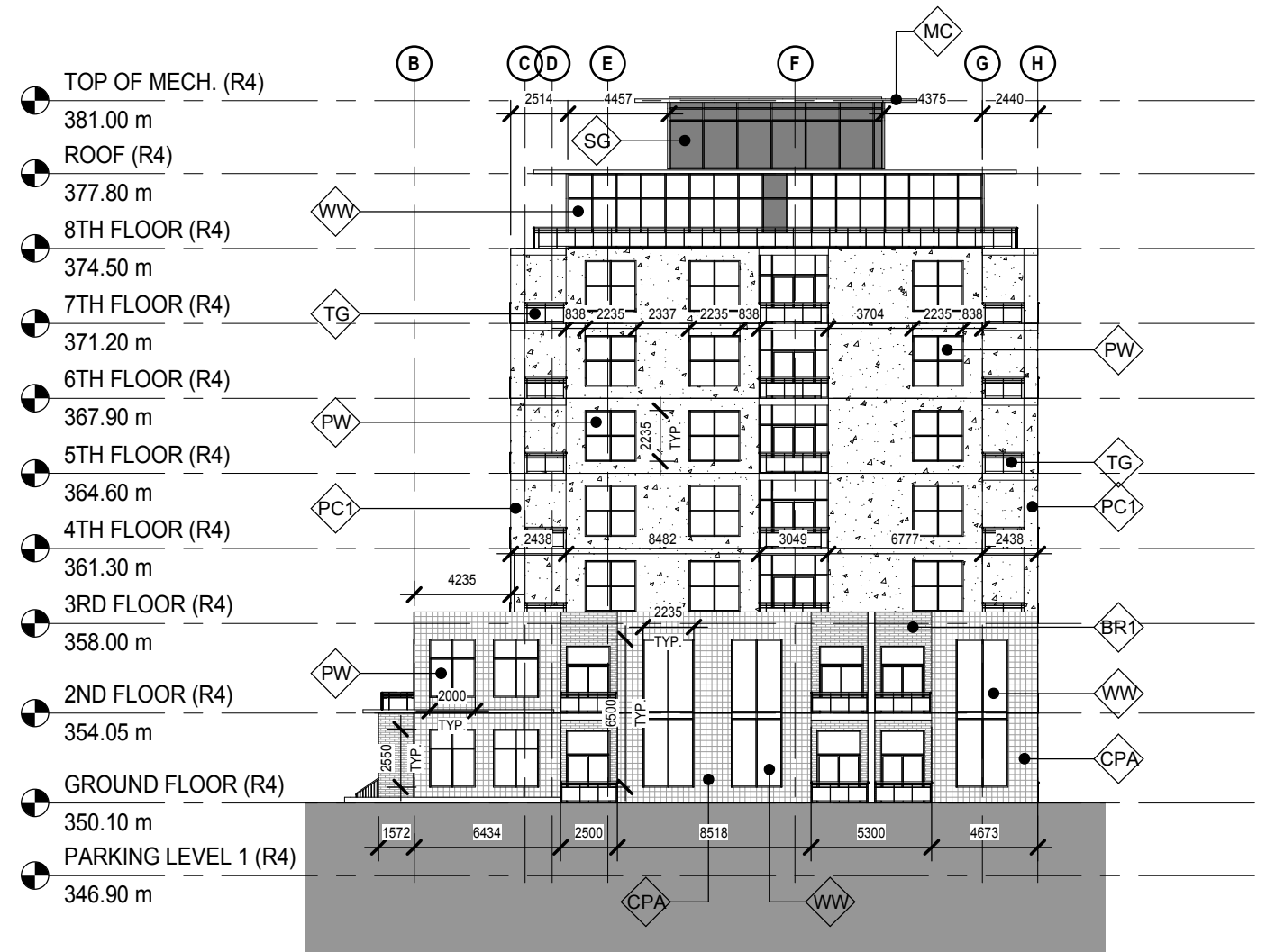
RES 3 - NORTH ELEVATION



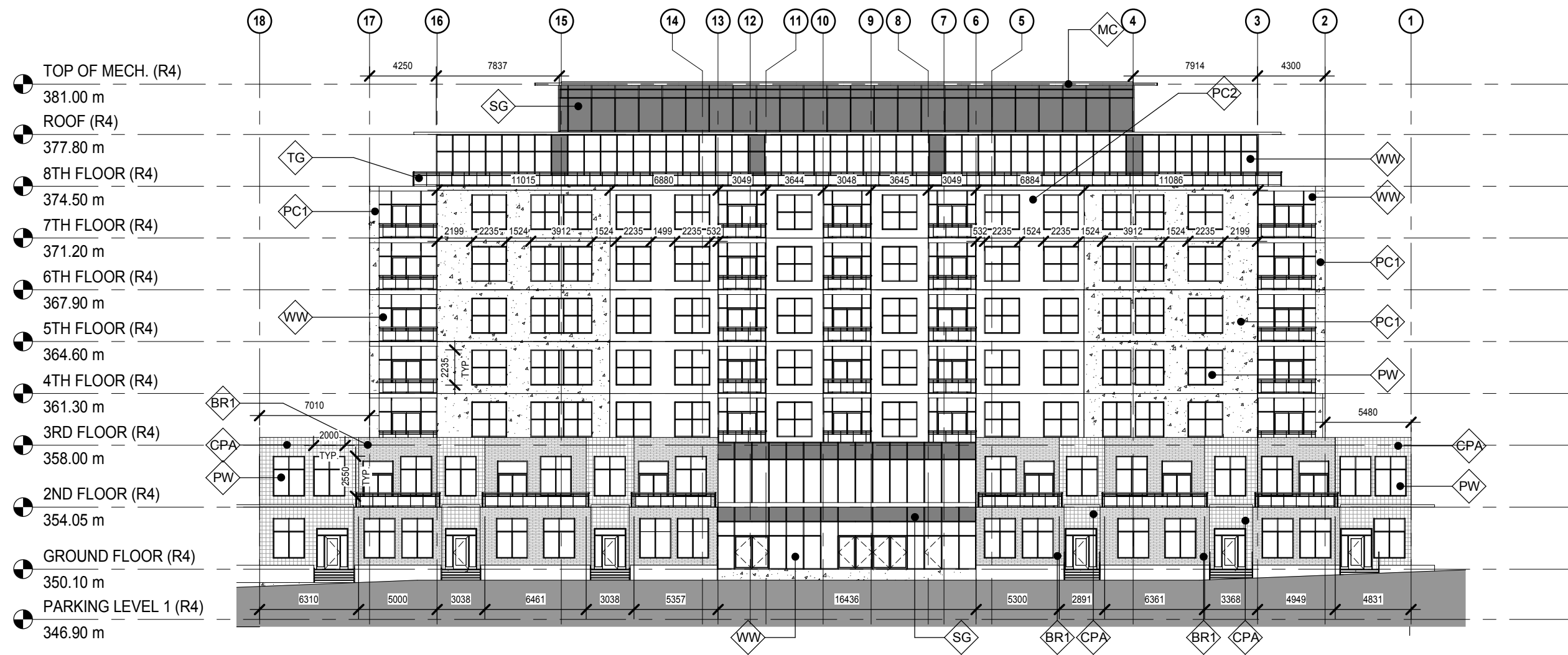
RES 3 - SOUTH ELEVATION



RES 4 - EAST ELEVATION



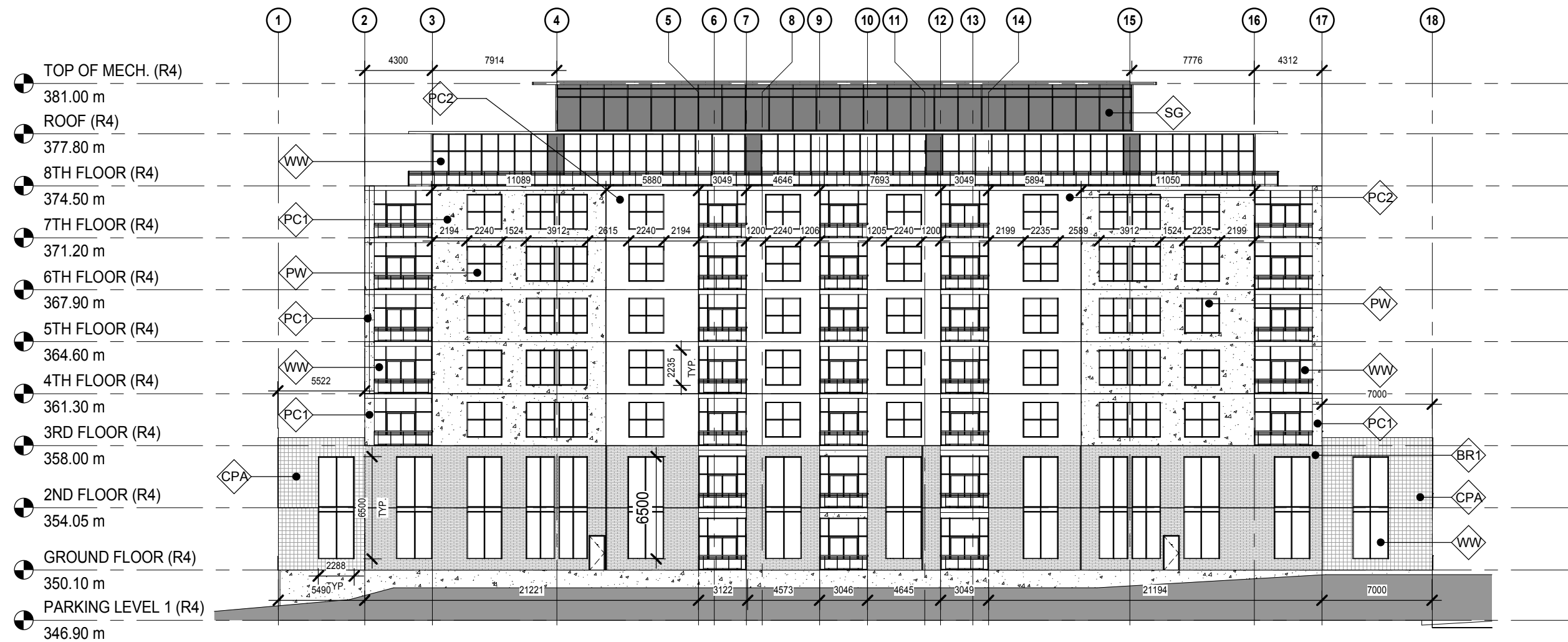
RES 4 - WEST ELEVATION



RES 4 - NORTH ELEVATION
 GORDON ST. MASTERPLAN
 Guelph, Ontario

A2-13
 2017-12-19
 PROJECT 180271





RES 4 - SOUTH ELEVATION
 GORDON ST. MASTERPLAN
 Guelph, Ontario

A2-14
 2017-12-19
 PROJECT 180271

