

IRVIN HERITAGE INC.

Supplemental Documentation

Stage 1 & 2

Archaeological Assessment Report

328 Victoria Road South & 588 Stone Road East

Lots 10-12, Division G

City of Guelph

Historic Township of Guelph

Historic County of Wellington

December 12, 2025

Prepared for: The Proponent

Prepared by: Irvin Heritage Inc.

Archaeological Licensee: Thomas Irvin, P379

PIF#: P379-0629-2023

Related PIF#(s): P042-047, 1992-094, P272-017-2008, P007-775-2016, P141-034-2006 & P083-124-2011

Version: Original

contact@irvinheritage.com

Office: 647-799-4418 Cell: 647-656-4810

355 Harry Walker Parkway North, Unit 7, Newmarket ON L3Y 7B8

www.irvinheritage.com

EXECUTIVE SUMMARY

The proponent wishes to obtain a partial archaeological clearance for the Study Area. The relevant and required documents are provided within this Supplemental Documentation package, along with mapping of protected archaeological sites.

The document also contains the report mapping from the preceding Stage 2 Archaeological Assessment Survey from Archaeological Research Associates Inc.



Meters
0 40 80 120 160

- Study Area
- Turfgrass Institute Site Locus B (Archaic Component) AjHb-27 Stage 2 Site Limit
- Sanders Site (AjHb-88): Stage 2 Site Limit

Source: Region of Waterloo, Microsoft, Vantor

Map 12: Stage 2 Results of Assessment - Sites Recommended For Further Stage 3 Assessment

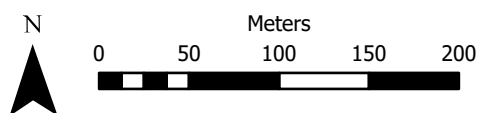
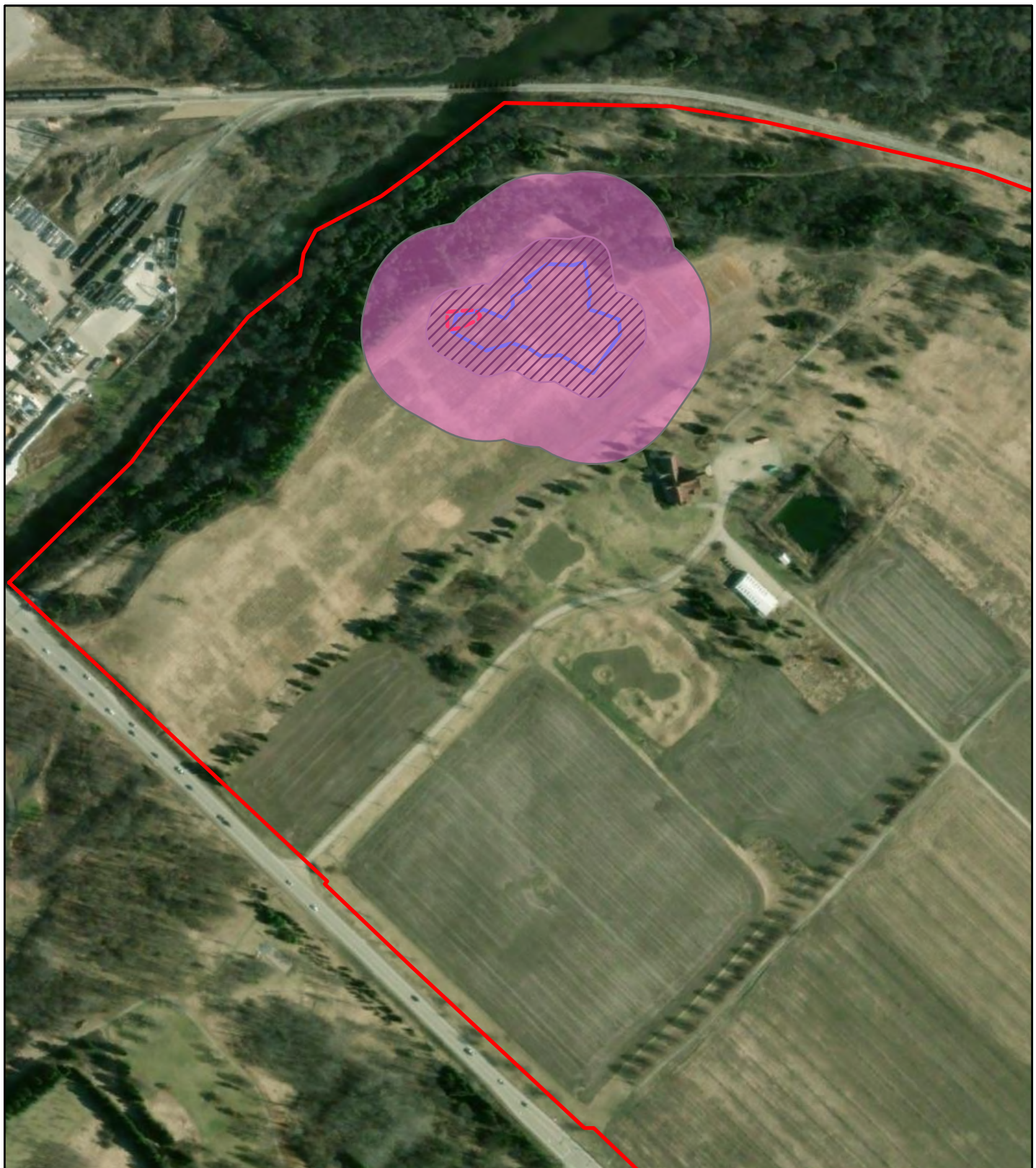


Meters
0 40 80 120 160

- Study Area
- Turfgrass Institute Site Locus B (Archaic Component) AjHb-27 Stage 2 Site Limit
- Sanders Site (AjHb-88): Stage 2 Site Limit

Source: Region of Waterloo, Microsoft, Vantor

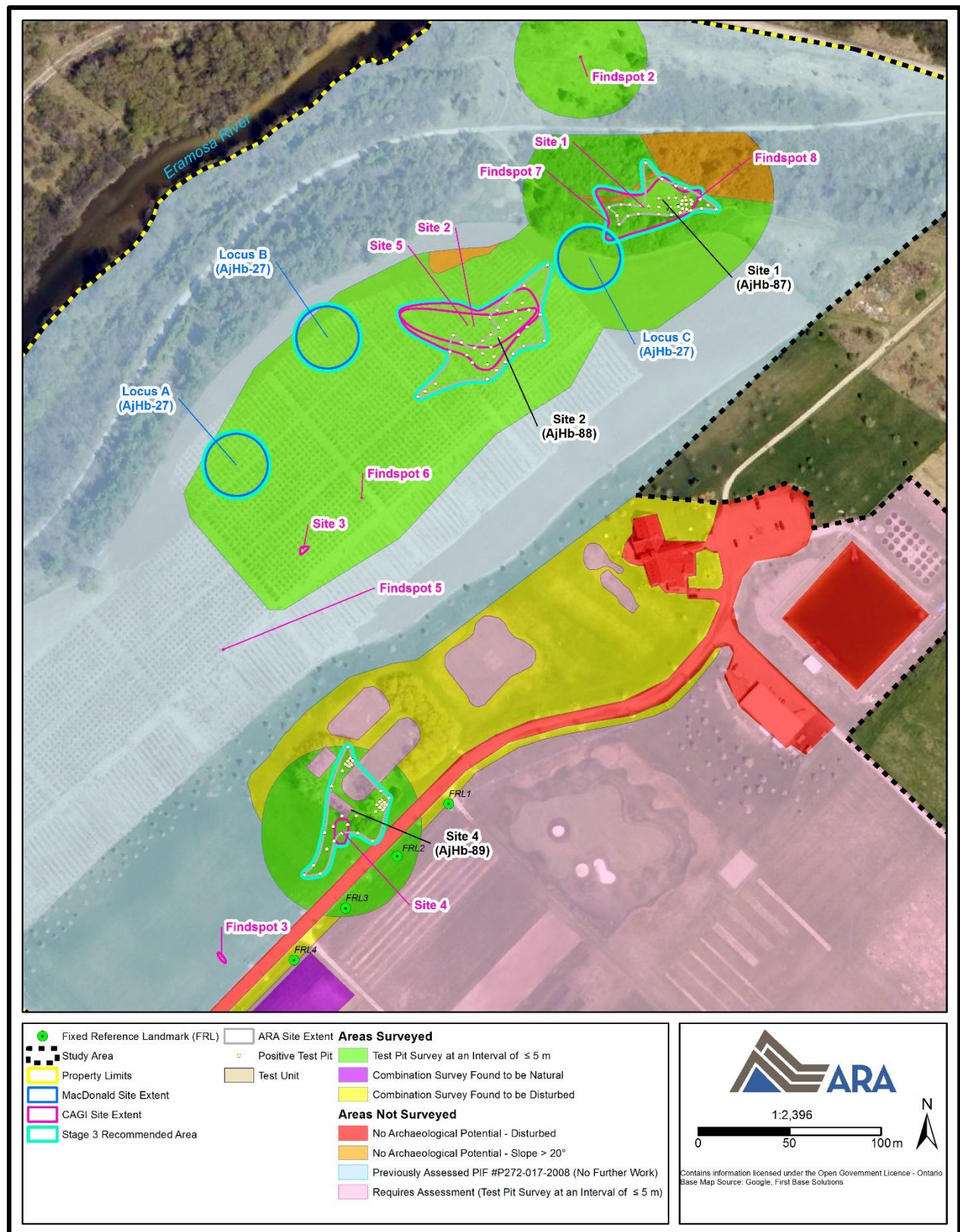
Map 12: Stage 2 Results of Assessment - Sites Recommended For Further Stage 3 Assessment



Source: Region of Waterloo, Microsoft, Vantor

- Study Area
- Turfgrass Institute Site (AjHb-27): CHVI
- Sanders Site (AjHb-88): CHVI
- 50m: Monitoring Buffer
- 20m: No Go Buffer

Map 14: Stage 2 Results of Assessment - Site Areas & Partial Clearance Buffer Zones



SD Map 6: Detailed Site Location Information and Recommendations
(Produced under licence using ArcGIS® software by Esri, © Esri)