

# COMMITTEE AGENDA

**CONSOLIDATED AS OF APRIL 2, 2015**



TO **Public Services Committee**

DATE Tuesday, April 7, 2015

LOCATION Council Chambers, Guelph City Hall, 1 Carden Street

TIME 5:00 p.m.

## **DISCLOSURE OF PECUNIARY INTEREST AND GENERAL NATURE THEREOF**

**CONFIRMATION OF MINUTES** - Public Services Committee March 2, 2015  
open meeting minutes

## **OPEN MEETING**

## **PRESENTATIONS** (Items with no accompanying report)

1. Ms. Randalin Ellery, Coordinator, Guelph and Wellington Task Force for Poverty Elimination – GWTFPE Annual Update

## **CONSENT AGENDA**

*The following resolutions have been prepared to facilitate the Committee's consideration of the various matters and are suggested for consideration. If the Committee wishes to address a specific report in isolation of the Consent Agenda, please identify the item. The item will be extracted and dealt with separately. The balance of the Public Services Committee Consent Agenda will be approved in one resolution.*

ITEM	CITY PRESENTATION	DELEGATIONS	TO BE EXTRACTED
PS-2015.5 Fire Underwriters Survey	Shawn Armstrong, General Manager, Emergency Services/Fire Chief		✓
PS-2015.6 In Flanders Fields at 100 Commemoration Plans	Tammy Adkin, Manager, Guelph Museums		✓
PS-2015.7 Guelph Wellbeing Final Report	Ross Kirkconnell, Executive Director, Guelph Family Health Team		✓
PS-2015.8 Guelph Wellington Local Immigration Partnership Contribution Agreement Extension	Alex Goss, Project Manager, Local Immigration Partnership  Sheila Nicholas, Program Manager, ESL and LINC Programs, St. George's Centre for Adult ESL		✓

---

PS-2016.9 Community Gardens Program Annual Report			
PS-2015.10 Cenotaph Policy			
PS-2015.11 Guelph Transit Metrolinx Co-Fare Program Update			

Resolution to adopt the balance of the Public Services Committee Consent Agenda.

### **ITEMS EXTRACTED FROM THE CONSENT AGENDA**

Once extracted items are identified, they will be dealt with in the following order:

- 1) delegations (may include presentations)
- 2) staff presentations only
- 3) all others.

### **CLOSED MEETING**

That the Public Services Committee now hold a meeting that is closed to the public with respect to:

**PS-C-2015.1      Citizen Appointments to the Guelph Museum Advisory Committee, Guelph Sports Hall of Fame Board of Directors and Wellbeing Grant Allocation Panel.**  
S. 239 (2) (b) of the *Municipal Act* – personal matters about identifiable individuals.

### **STAFF UPDATES AND ANNOUNCEMENTS**

### **ADJOURN**

**NEXT MEETING:** May 4, 2015

**PUBLIC SERVICES COMMITTEE  
CONSOLIDATED CONSENT AGENDA**

**Tuesday, April 7, 2015**

Members of the Public Services Committee:

**SUMMARY OF REPORTS:**

The following resolutions have been prepared to facilitate Council's consideration of the various matters and are suggested for consideration. If Council wishes to address a specific report in isolation of the Consent Agenda, please identify the item. The item will be extracted and dealt with immediately. The balance of the Consent Agenda will be approved in one resolution.

**REPORTS FROM ADMINISTRATIVE STAFF**

<b>REPORT</b>	<b>DIRECTION</b>
<b>PS-2015.5      Fire Underwriters Survey</b>  1. That the Public Services Report # PS-15-12 "Fire Underwriters Survey" dated April 7, 2015, be received.	Receive
<b>PS-2015.6      In Flanders Fields at 100 Commemoration Plans</b>  1. That the Public Services Report # PS-15-13 "In Flanders Fields at 100 Commemoration Plans" dated April 7, 2015, be received.	Receive
<b>PS-2015.7      Guelph Wellbeing Final Report</b>  1. That the Public Services Report # PS-15-15 "Guelph Wellbeing Final Report" dated April 7, 2015 be received.	Receive
<b>PS-2015.8      Guelph Wellington Local Immigration Partnership Contribution Agreement Extension</b>  1. That the Public Services Report # PS-15-19 "Guelph Wellington Local Immigration Partnership Contribution Agreement Extension" dated April 7, 2015 be received.	Receive
<b>PS-2015.9      Community Gardens Program Annual Report</b>  1. That the Public Services Report # PS-15-14 "Community Gardens Program Annual Report" dated April 7, 2015, be received.	Receive

**PS-2015.10      Cenotaph Policy**

Approve

1. That the Public Services Report # PS-15-16 "Cenotaph Policy" dated April 7, 2015, be received.
2. That staff be given approval to correct any errors or omissions on the Guelph Cenotaph as well as add any new names in the future, subject to the criteria set out in this report.

**PS-2015.11      Guelph Transit Metrolinx Co-Fare Program Update**

Receive

1. That the Public Services Report # PS-15-17 "Guelph Transit Metrolinx Co-Fare Program Update" dated April 7, 2015, be received.

attach.





GUELPH | WELLINGTON

# Local Immigration Partnership

*Creating a caring, equitable community where everyone thrives.*



# What is the GWLIP and what does it do?

- Not a service provider
- Community-driven project
- Identify priorities
- Work in collaboration with partners
- Focus on developing sustainable solutions



# Why is GWLIP important?

- 1. Immigration is an essential economic driver in Guelph**
- 2. There is more work to be done to make Guelph and Wellington welcoming communities**

# Why is GWLIP important?

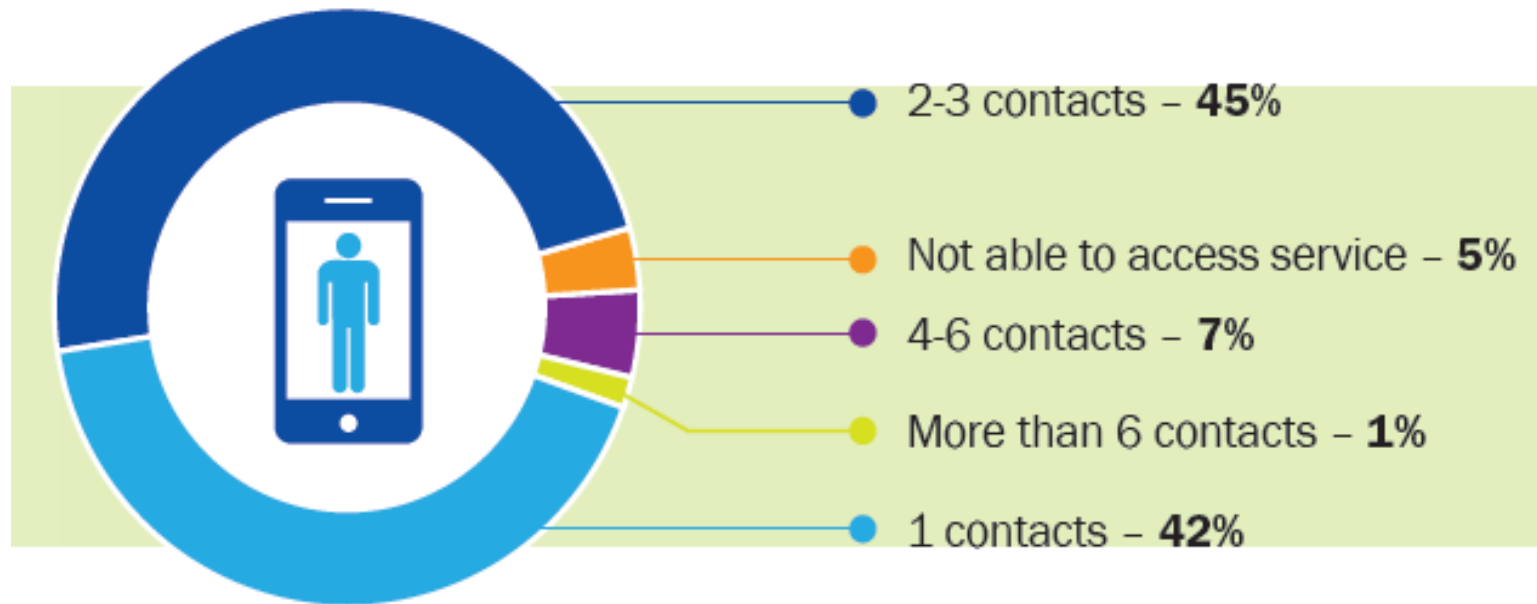
## Identified Barriers to Employment





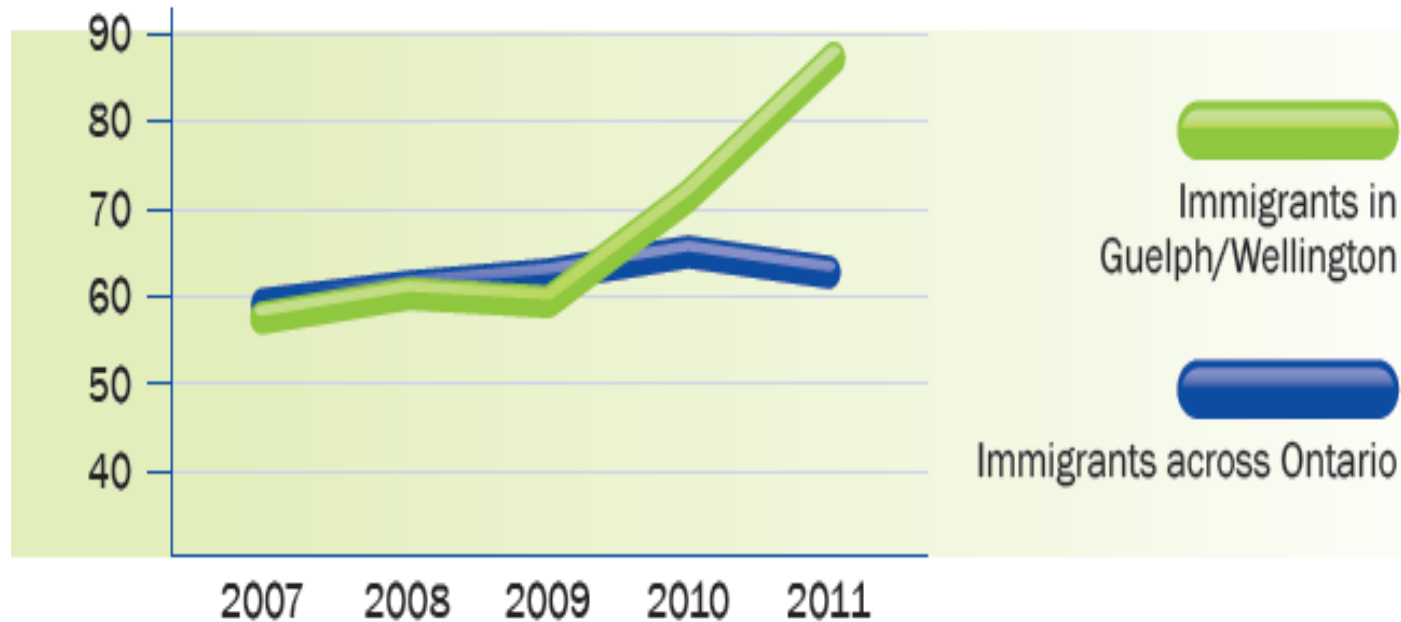
# Why is GWLIP important?

## # of Referrals to Get the Needed Service



# Why is GWLIP important?

## Strong Sense of Belonging



# GWLIP Vision

We envision a caring, equitable community where ***everyone*** thrives!

## Priorities:

1. Meaningful Employment
2. Entrepreneurship Support
3. Access to Services
4. Awareness and Inclusion

# How GWLIP Makes a Difference



# Immigration Portal

Skip to Content | Site Map | Site Accessibility | Font Size | Change Contrast | English | -1 °C

HOME | LIVING | LEARNING | WORKING | DOING BUSINESS | GUELPH WELLINGTON | AGRICULTURE

## GUELPH WELLINGTON IMMIGRATION PORTAL

Guelph Wellington: Live, Learn and Work! [FIND OUT HOW!](#)

SEARCH  
What are you searching for?  60

BEFORE YOU ARRIVE  
AFTER YOU ARRIVE

Guelph Wellington Immigration Portal

Popular

- Immigrating
- Before You Arrive
- International Students
- New Panel
- Before You Arrive Links
- City of Guelph
- The County of

**LIVING**

- Community Programs & Services
- Ethnocultural Groups
- The Guelph Community Guide
- New Resident's Guide
- Visit Guelph Wellington

**LEARNING**

- Upper Grand District School Board
- Wellington Catholic District School Board
- International Students
- English as a Second Language
- Conestoga College

**WORKING**

- Working in Canada
- Planning to Work in Canada
- Guelph Wellington Job Postings
- 2nd Chance Employment Counselling
- Lutherwood

**DOING BUSINESS**

- Guelph Chamber of Commerce
- Guelph Wellington Business Enterprise Centre
- Wellington-Waterloo Community Futures
- Innovation Guelph

[guelphwellingtonimmigration.ca/#](http://guelphwellingtonimmigration.ca/#)

[www.guelphwellingtonimmigration.ca](http://www.guelphwellingtonimmigration.ca)



# Mentorship Program



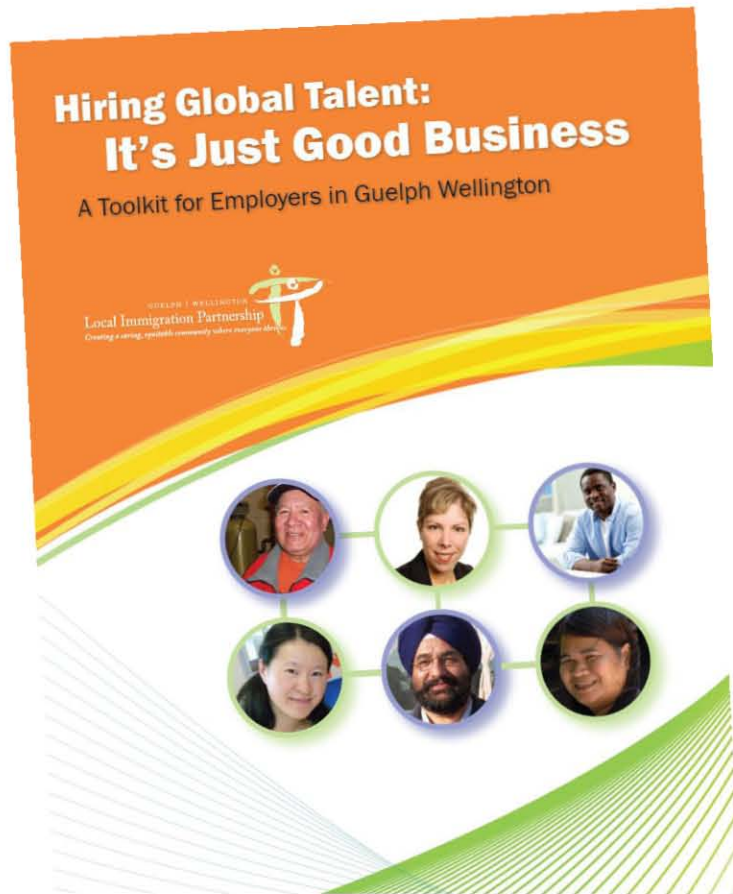
GUELPH | WELLINGTON  
Local Immigration Partnership  
*Creating a caring, equitable community where everyone thrives.*



# Community Connector Program



# Employer Resources



# Current Work

1. **Global Talent Initiative** to connect directly with businesses
2. Improved system of service coordination for **language interpretation**
3. Development of system to **improve access to services** for newcomers



# Current Work

4. Improved awareness and supports for **immigrant entrepreneurs**
5. Immigrant story-telling initiative to **raise awareness** of immigration issues
6. **Research** on emerging immigration issues and development of a system to measure how immigrants are doing



# Next Steps

- **Sustainability Planning**
- **Immigration Connection 2015** with keynote speaker and national leader on immigration and diversity issues: Ratna Omidvar (March 13, 9am to 1pm)

# Contact Information

**Alex Goss**

Project Manager

Guelph Wellington

Local Immigration Partnership

[alex.goss@guelph.ca](mailto:alex.goss@guelph.ca)

519-822-1260 x2634

[www.guelphwellingtonip.ca](http://www.guelphwellingtonip.ca)



# STAFF REPORT



TO Public Services Committee

SERVICE AREA Public Services

DATE April 7, 2015

**SUBJECT Guelph Wellington Local Immigration Partnership  
Contribution Agreement Extension**

REPORT NUMBER PS-15-19

## EXECUTIVE SUMMARY

### PURPOSE OF REPORT

To provide an update on the Guelph Wellington Local Immigration Partnership achievements and Contribution Agreement Extension from Citizenship and Immigration Canada.

### KEY FINDINGS

The Guelph Wellington Local Immigration Partnership is a community-led, collaborative project that has been hosted by the City of Guelph since 2009 and aims to create a caring, equitable community where everyone thrives.

Citizenship and Immigration Canada (CIC) has announced that the Guelph Wellington Local Immigration Partnership (GW-LIP) will receive an additional two years of funding to continue with the implementation plan, extending the City of Guelph's contribution agreement until March 2016.

The extended contribution agreement will allow for the GW-LIP to continue the work it began in addressing key immigration issues around employment, language training, access to supports and services, and community inclusion as well as identify new areas of action.

### FINANCIAL IMPLICATIONS

In 2014, the Guelph Wellington Local Immigration Partnership contributed \$15,949 to the City of Guelph through salary chargebacks and rent.

### ACTION REQUIRED

Receive the staff report.

# STAFF REPORT

---

## RECOMMENDATION

1. That the Public Services Report # PS-15-19 "Guelph Wellington Local Immigration Partnership Contribution Agreement Extension" dated April 7, 2015 be received.

## BACKGROUND

The Guelph Wellington Local Immigration Partnership (GW-LIP) is presently one of the 50 LIP initiatives throughout Canada that has received funding through Citizenship and Immigration Canada (CIC). The LIP initiatives are being seen as a best practice by CIC and new LIPs are emerging across the country including Surrey, British Columbia and St. John's, Newfoundland. The total value of the Contribution Agreement is \$232,752 for the period April 2014 to March 2015. The GW-LIP is funded by Citizenship and Immigration Canada, and will receive a 1-year funding extension to March 2016. The financial amount of the agreement is expected to remain the same.

The following report provides an update on the Implementation Phase of the GW-LIP which is hosted by the City of Guelph (Public Services) and funded by Citizenship and Immigration Canada.

Guelph and Wellington County are becoming increasingly multicultural and are changing quickly. Immigration is a significant part of that change as immigrants bring economic and social benefits to Guelph and Wellington County. However, immigrants also face a unique set of barriers to being able to realize their full potential and contribute back to the community. The GW-LIP creates a more welcoming and inclusive community that better supports immigrants in overcoming local barriers to settlement.

The GW-LIP does this by working to ensure immigrants are more able to find employment that matches skills and experience, start their own businesses, access needed programs and services, and have the connections to be included and integrated in their communities.

Immigration issues are complex and one organization cannot achieve these goals alone. That is why the GW-LIP relies on the engagement and collaborative support of stakeholders and community partners. The GW-LIP has a membership of over 90 active community partners and volunteers. Community partners are representatives from service providers, businesses, newcomers, cultural associations, the public sector, and other communities.

## REPORT

### Contribution Agreement Extension

Citizenship and Immigration Canada (CIC) has announced that the GW-LIP will receive an additional year of funding to continue with the implementation plan, extending the City of Guelph's contribution agreement until March 2016. The

# STAFF REPORT



announcement provides a great opportunity to share some of the accomplishments of the GW-LIP over the last year, and the next steps for the upcoming fiscal year.

## **GW-LIP Initiatives**

While the GW-LIP has accomplished a lot in its first three and a half years of implementation, there is still more work to be done. Work continues on some of the initiatives described above, for example, to continue to create new opportunities to market the benefits of diversity. The GW-LIP held a series of consultations in late-2013, early-2014 to identify new immigration priorities for Guelph and Wellington.

These priorities have been identified broadly as:

1. Meaningful Employment
2. Entrepreneurship and Business Supports
3. Access to Services
4. Awareness and Inclusion

There are now committees of partners working on specific projects within each of these priorities. Work is also in progress on the following initiatives:

- LIP coordinated the successful application for \$36,000 for the Global Talent Initiative, a project supported by OMAFRA and the City and County economic development departments to engage businesses one-on-one on the benefits of hiring immigrants and leveraging the immigration system
- Improved system of service coordination for language interpretation
- Development of system to improve access to services for newcomers in Guelph
- Improved awareness and supports for immigrant entrepreneurs
- Immigrant story-telling initiative to raise awareness of immigration issues and build social connections
- Conducting research on emerging immigration issues and development of a system of measuring how immigrants are doing in Guelph-Wellington

## **GW-LIP Sustainability**

While the work of the GW-LIP continues to be important for the economic and social success of Guelph and Wellington County, the funding situation beyond March 2016 is not clear. For this reason the GW-LIP is continuing its efforts to be financially sustainable. This has led to the development of a new streamlined governance structure. Within this structure, the Leadership Council that provides overall direction to the GW-LIP has expanded to 35 members.

A new Sustainability sub-committee is focused on developing a resource plan to diversify GW-LIP funding and ensure that the work of the GW-LIP will continue strong into the future. The Sustainability sub-committee will explore potential hosting options for the GW-LIP beyond March 2016; however, the Leadership Council made the decision that the City of Guelph should remain the host until at least that point.



# STAFF REPORT

The Sustainability sub-committee is also exploring options for financial sustainability including seeking support from sustaining partners including the City, County, and Citizenship and Immigration Canada to contribute 2/3 of the current project budget with 1/3 coming from sponsorship and fee for services. The GW-LIP plans to return to Council with more details on the sustainability prior to the 2016 budget process.

## **GW-LIP Accomplishments**

Since mid-2011, the LIP has made a number of changes in the community and has had several accomplishments. A full list of accomplishments was presented to the Community and Social Services Committee in February 2014. The following is an update to some of those recent accomplishments and some detail as to what was involved:

### **GW-LIP Achievements**

#### **1) Immigration Portal for Guelph Wellington**

GW-LIP initiated and supported the development of the Guelph Wellington Immigration Portal ([guelphwellingtonimmigration.ca](http://guelphwellingtonimmigration.ca)). The City of Guelph hosts the Provincially funded portal launched in March 2013. The portal is an excellent resource for newcomers, service providers, entrepreneurs, and employers to learn more about local supports, and is one tool to attract newcomers to our communities. The portal has received 22,000 unique visitors since its launch with 82% of visitors coming from outside of Canada. Additional funding has been received by the City to grow the portal in 2015.

#### **2) Mentorship Program for Guelph Wellington**

GW-LIP members worked together across multiple stakeholders, employment agencies, employer networks, and newcomers, to develop a mentorship program for Guelph-Wellington. Lutherwood is now the lead on this important program that connects skilled immigrants with mentors already working in their field. A total of 25 employer-newcomers matches were made between April and December 2014.

#### **3) Community Connector Initiative**

GW-LIP members worked together to develop a Community Connector training program. The program is designed to create a group of motivated volunteers who have received training in knowledge and skills to help newcomers to feel welcome by connecting them to the community and to services they need. The initiative is now hosted by the Guelph Neighbourhood Support Coalition and has received pilot funding for 2015 in the amount of \$10,000.

#### **4) Hiring Global Talent Employer Toolkit**

With the support of one of our action teams, local businesses, and our partner the Letter M Marketing, the GW-LIP has developed a marketing strategy to market the benefits of hiring diversity to small and medium sized businesses. Initial fact sheets, case studies, and employer tools to support a change in hiring practices have been developed and distributed to over 1,400 local employers with the support of the Guelph Chamber of Commerce. In 2014 a full employer toolkit was

# STAFF REPORT

developed as a comprehensive resource for local employers and has been shared directly with approximately 100 employers.

## **5) Research on Entrepreneurial needs of newcomers**

GW-LIP members worked together across multiple stakeholders, employment agencies, employer networks, and newcomers, to conduct research with newcomer entrepreneurs to understand their needs and potential gaps in service and supports. This led to the development of recommendations based on a literature review and a series of focus groups. Recommendations were presented at the 2015 Economic Summit.

## **6) LIP Annual Events**

The GW-LIP hosted three annual events (in 2012, 2013, and 2014) to raise the awareness of immigration issues in the community and support GW-LIP's planning for the next year. The events attract about 100 people each year. The next event is planned for March 13, 2015. It will feature nationally-renowned leader on diversity and immigration issues, Ratna Omidvar, and will celebrate some of the successes of the GW-LIP and our partners. The event is open to the public and all members of Council are invited to attend.

## **7) Support for other Initiatives**

The GW-LIP has also supported other community initiatives that fit with the needs and gaps identified in the Settlement Strategy. These include:

- Connect Guelph Wellington
- City of Guelph Diversity Strategy Steering Committee
- Business Retention and Expansion initiatives in both the City and the County in 2014
- Economic Summits in 2013 and 2014
- Immigrant Services' Youth Leadership Training Program in 2013 and 2014
- New Canadian Kid performances with the Upper Grand District School Board in 2014
- Regional Assessment of local business supports in 2014
- Innovation Guelph's Women's Economic Advancement Project in 2014 and 2015
- Immigrant Services' Language Assessment Referral Centre in 2014 and 2015
- Immigrant Services' Inspirit Foundation Youth Grant on intercultural dialogue in 2015

## **CORPORATE STRATEGIC PLAN**

### City Building

- 3.1 Ensure a well designed, safe, inclusive, appealing and sustainable City
- 3.2 Be economically viable, resilient, diverse and attractive for business
- 3.3 Strengthen citizen and stakeholder engagement and communications

## **DEPARTMENTAL CONSULTATION**

Economic Development was consulted in the design and implementation of the Global Talent Initiative, and other activities.

# STAFF REPORT



## COMMUNICATIONS

Consulted with Communications Department to develop communications plan around upcoming events and initiatives

## ATTACHMENTS

N/A

### Report Author

Alex Goss  
Project Manager, Local Immigration Partnership  
Public Services

---

### Approved By

Barbara Powell  
Manager, Community Investments  
and Social Services  
Public Services  
519-822-1260 ext. 2675  
barbara.powell@guelph.ca

---

### Recommended By

Derrick Thomson  
Deputy CAO  
Public Services  
519-822-1260 ext. 2665  
derrick.thomson@guelph.ca