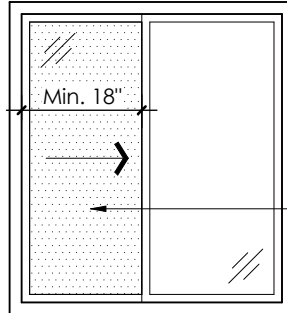




# Escape Window Details

(for additional dwelling units)

**Image 1:** Window size for providing additional means of escape (C139).



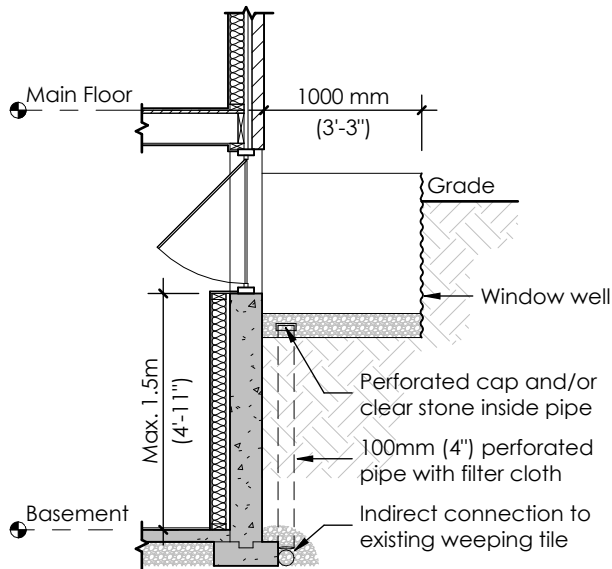
Minimum area of unobstructed opening not less than 0.38m<sup>2</sup> (4.1ft<sup>2</sup>) with no dimension less than 460mm (18") when in open position.

**Window Requirements:**

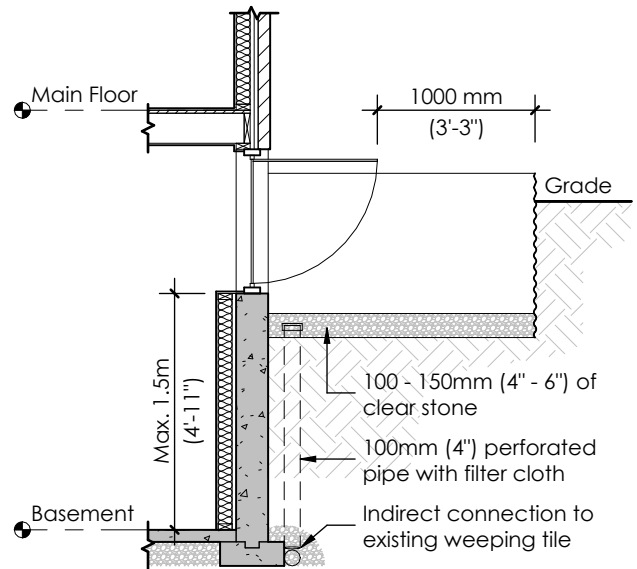
- Shall be maximum 1.0m (3'-3") below adjacent ground level.
- Shall be maximum 0.9m (2'-11") above basement floor or fixed steps.
- Shall be a single motion window (ie.: slider or casement type).
- Shall be openable from the inside without the use of tools or special knowledge.

**Image 2:** Window well for window providing additional means of escape (C139).

### In-swing or slider style



### Out-swing style



Project Name  
**Sample Drawings**

Drawing Title  
**Escape Window Details**

Scale  
1/4" = 1'-0"  
Date  
February 2026  
Project  
Sample

Drawing Number  
**ESW-1**