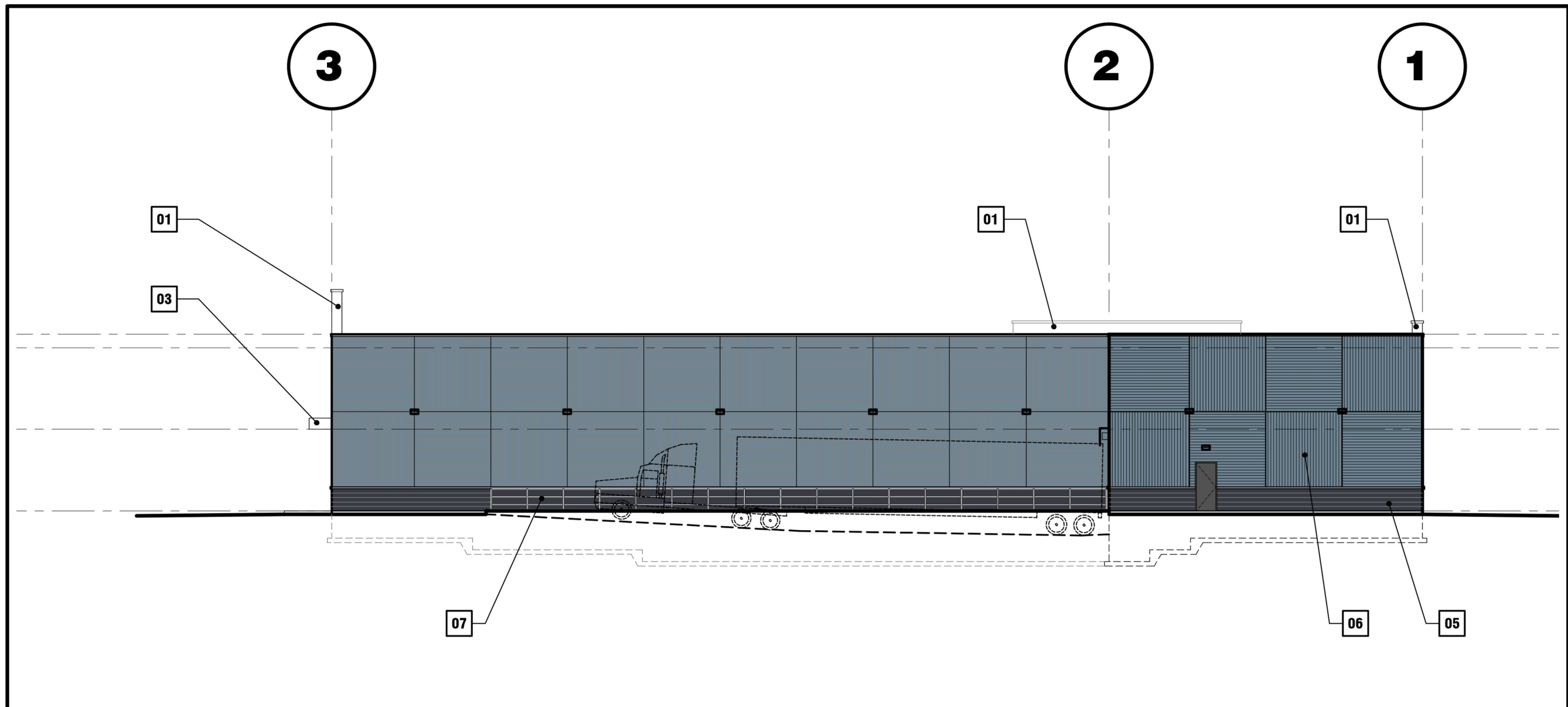
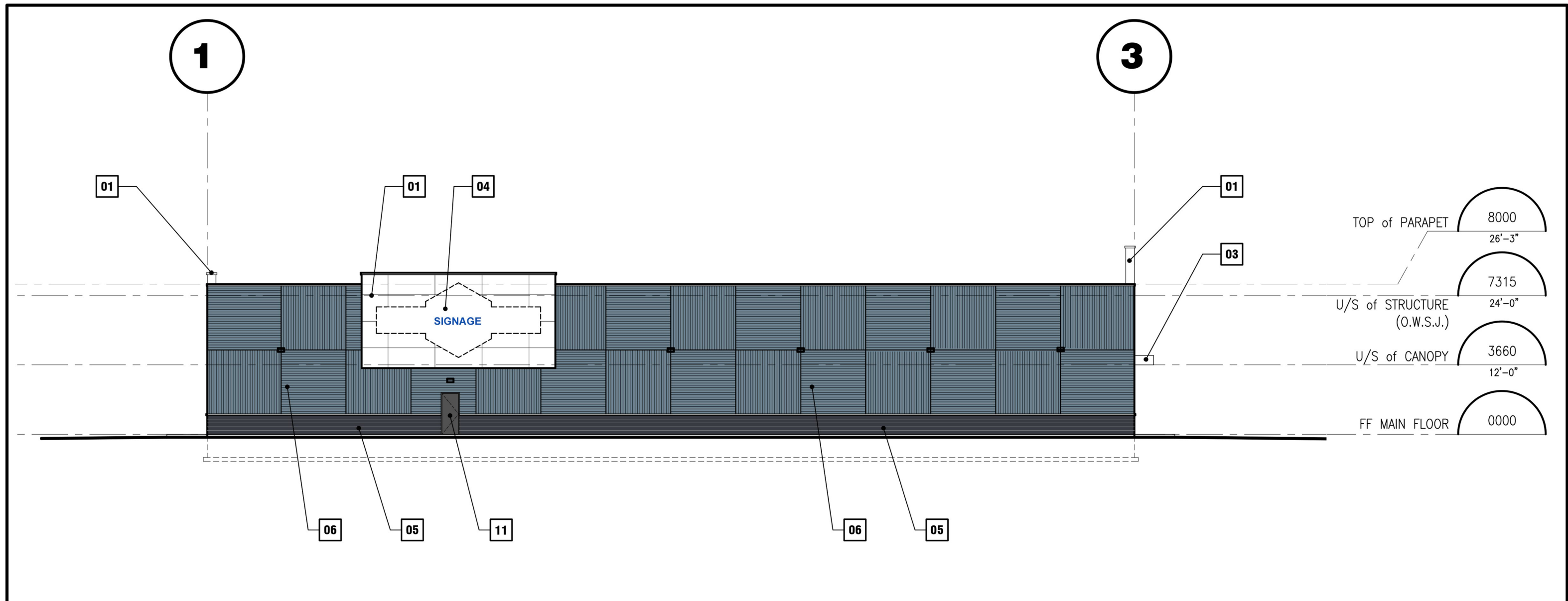


**1** PROJECT EAST ELEVATION  
(ENTRANCE) scale: 1 : 200

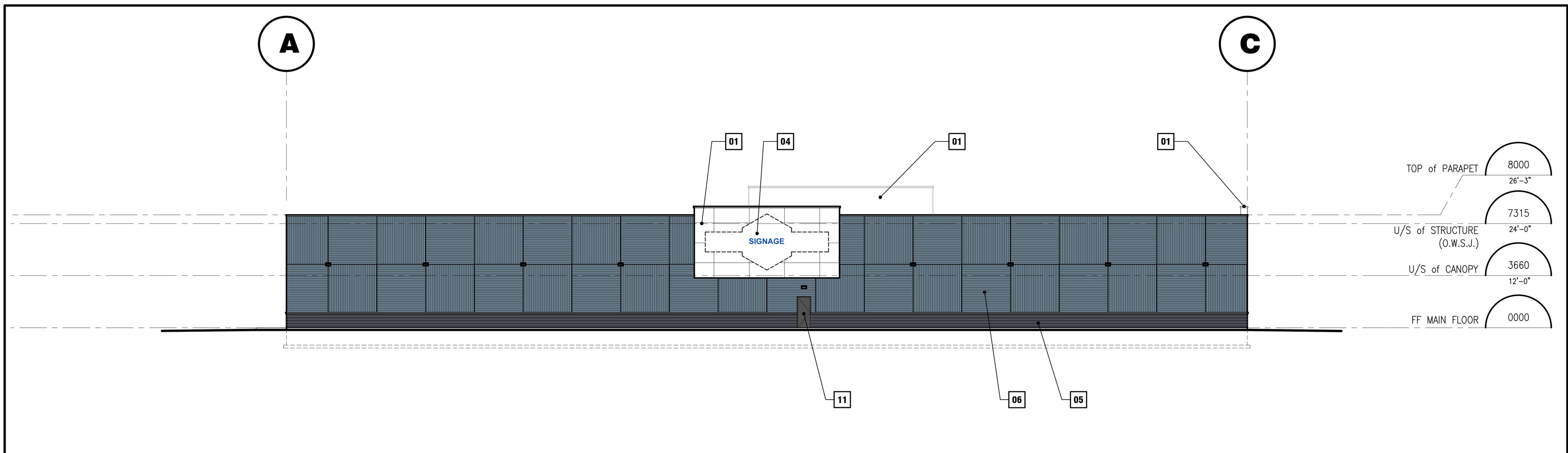


**2** PROJECT NORTH ELEVATION  
scale: 1 : 200



**3** PROJECT SOUTH ELEVATION  
(FACING ROYAL RD) scale: 1 : 200

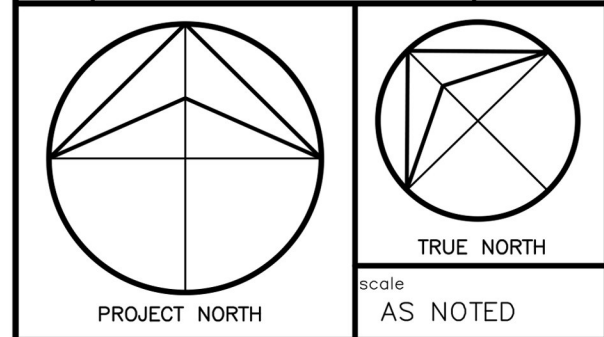
LEGEND			
01	ITEM: 'ALPOLIC' ALUMINUM COMPOSITE PANELS - FLAT COLOUR: "SAW WHITE" MANUFACTURER: ALPOLIC	09	CLEAR ANODIZED ALUMINUM FRAMING SYSTEM, THERMALLY BROKEN c/w CLEAR INSULATED GLAZING.
02	ITEM: 'ALPOLIC' ALUMINUM COMPOSITE PANELS - FLAT COLOUR: "BLUE" CMYK 96,69,15,3 PMS 2161 MANUFACTURER: ALPOLIC	10	CLEAR ANODIZED ALUMINUM FRAMING SYSTEM, THERMALLY BROKEN c/w CLEAR INSULATED GLAZING, ALUMINUM DOOR & FRAME
03	ITEM: 'ALPOLIC' ALUMINUM COMPOSITE PANELS - PROJECTED LEDGE/CANOPY COLOUR: "SAW WHITE" MANUFACTURER: ALPOLIC	11	ITEM: INSULATED H.M. DOOR & FRAME COLOUR: LT WARM GREY
04	ITEM: ILLUMINATED SIGNAGE by TENANT	12	ITEM: INSULATED O/H DOOR COLOUR: LT WARM GREY
05	ITEM: ARCHITECTURAL CONCRETE BLOCK COLOUR: SHOULDICE TEX-STONE ELITE SERIES IN COLBY COLOUR or APPROVED ALTERNATE	13	ITEM: INSULATED O/H DOOR c/w DOCK SEALS COLOUR: LT WARM GREY O/H DOOR BLACK DOCK SEALS
06	ITEM: 7/8 CORRUGATED METAL PANELS COLOUR: "REGENT GREY" #56082COLOURSAW WHITE" MANUFACTURER: VICWEST or APPROVED ALTERNATE		
07	HOT DIPPED GALVANIZED GUARD RAIL		
08	FIRE DEPARTMENT CONNECTION		




**4** PROJECT WEST ELEVATION  
(FACING WOODLAWN RD) scale: 1 : 200

NOTE:  
This drawing and all associated documentation are the confidential property of BJC architects inc. and must be returned upon request. Any duplication, reuse, revision and/or distribution in part or whole without the prior written authorization of BJC architects inc. is strictly prohibited. Each contractor will check and verify all dimensions and report all errors and omissions to the design professional whose seal is affixed to this drawing. Do not scale this drawing.  
The information and material herein reflect the best judgement of BJC architects inc., in light of the information available to them at the time of preparation of these documents. Any use which a third party makes of these documents, or any reliance on or decisions to be made based on them, is the sole responsibility of such third party. BJC architects inc. accepts no responsibility for damages, if any, suffered by any third party as a result of decisions made or actions based on these documents © BJC architects inc. 2024

07	ZONING BYLAW AMENDMENT (ZBA) SUBMISSION-01	2024.11.28
06	ISSUED TO CONSULTANTS - FIRST DRAFT	2024.10.31
05	UPDATED TO SUIT TENANT COMMENTS	2024.10.09
04	REISSUED TO CONSULTANTS	2024.08.22
03	ISSUED TO CONSULTANTS	2024.08.01
02	ISSUED FOR ZBA	2023.06.19
01	ISSUED FOR PRE-CONSULTATION	2023.04.06
No.	REVISIONS	date



	drawn CRT
	last worked on by 2024.12.05 SCY
	checked B.R.J.
	print date 2024.11.28



client <b>I.J.K. HOLDING INC.</b>
147 WYNDHAM ST.N. SUIT 303 GUELPH ONTARIO
project <b>INDUSTRIAL SUPPLY OUTLET</b>
81 ROYAL RD GUELPH ONTARIO

drawing title	
ELEVATIONS	
reference	
project no. 23—031	client reference number
sheet no.	
E P - 0 1 0 7	