

**RC SPENCER ASSOCIATES INC.**  
 Consulting Engineers

Windsor: 800 University Ave. W. - Windsor, ON N9A 5R9  
 Leamington: 18 Talbot St. W. - Leamington, ON N8H 1M4  
 Chatham-Kent: 49 Raleigh St. - Chatham, ON N7M 2M6

Professional Engineers  
 Ontario

DESIGN	M.M.H.			
CHECKED	A.D.B.			
DRAWN	M.M.H.			
CHECKED	A.D.B.			
SCALE	1:400			
NO.	REVISION	DATE	BY	APP
1.	ISSUED FOR APPROVAL	12 FEB. 2025	M.M.H.	A.D.B.

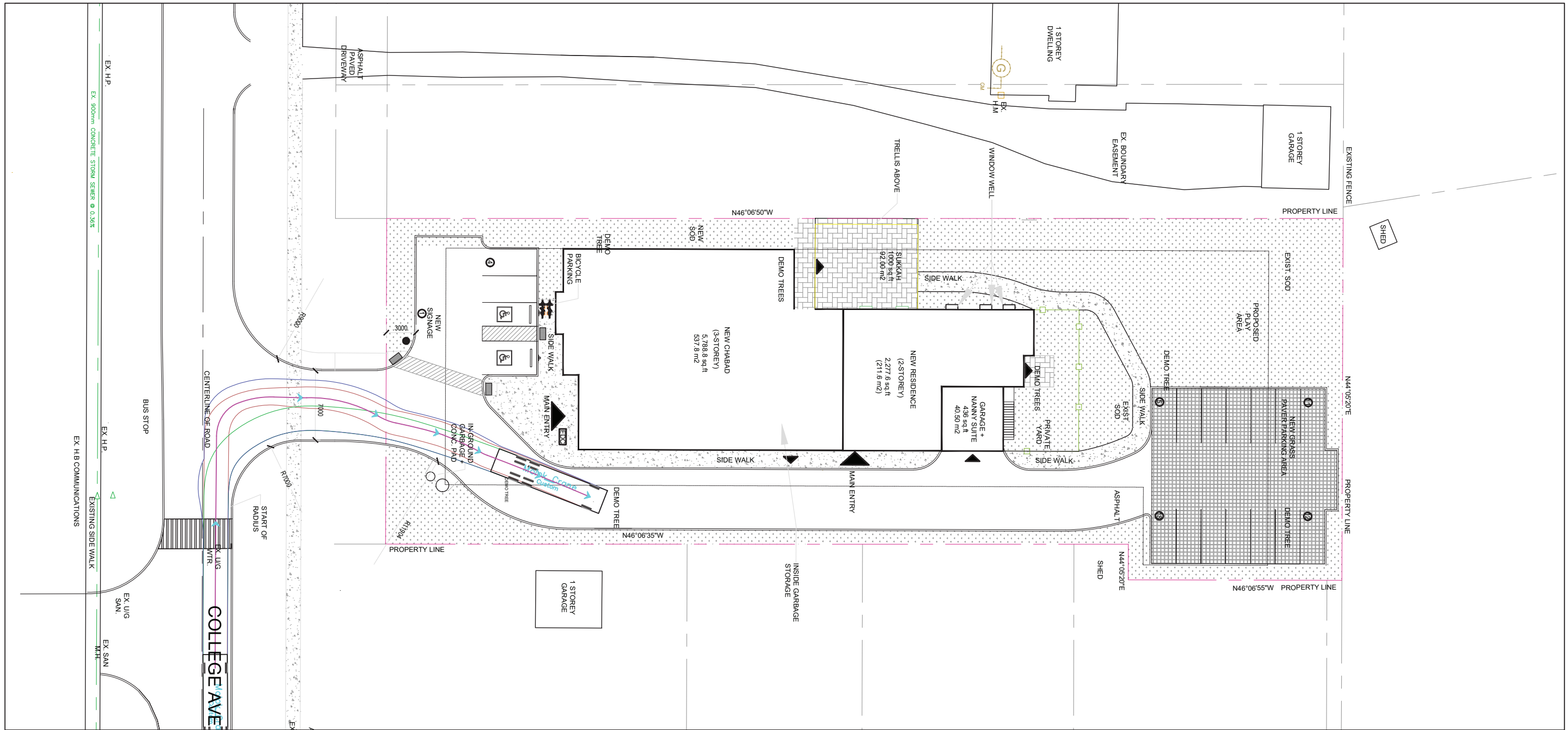
81 COLLEGE AVENUE WEST, GUELPH

**SWEPT PATH ANALYSIS  
 LEFT TURN ENTRY**

PROJECT NO.  
25-1719

FIGURE NO.  
1

OF  
5



**RC SPENCER ASSOCIATES INC.**  
 Consulting Engineers

Windsor: 800 University Ave. W. - Windsor, ON N9A 5R9  
 Leamington: 18 Talbot St. W. - Leamington, ON N8H 1M4  
 Chatham-Kent: 49 Raleigh St. - Chatham, ON N7M 2M6

Professional Engineers  
 Ontario

DESIGN	M.M.H.			
CHECKED	A.D.B.			
DRAWN	M.M.H.			
CHECKED	A.D.B.			
SCALE	1:400			
NO.	REVISION	DATE	BY	APP
1.	ISSUED FOR APPROVAL	12 FEB. 2025	M.M.H.	A.D.B.

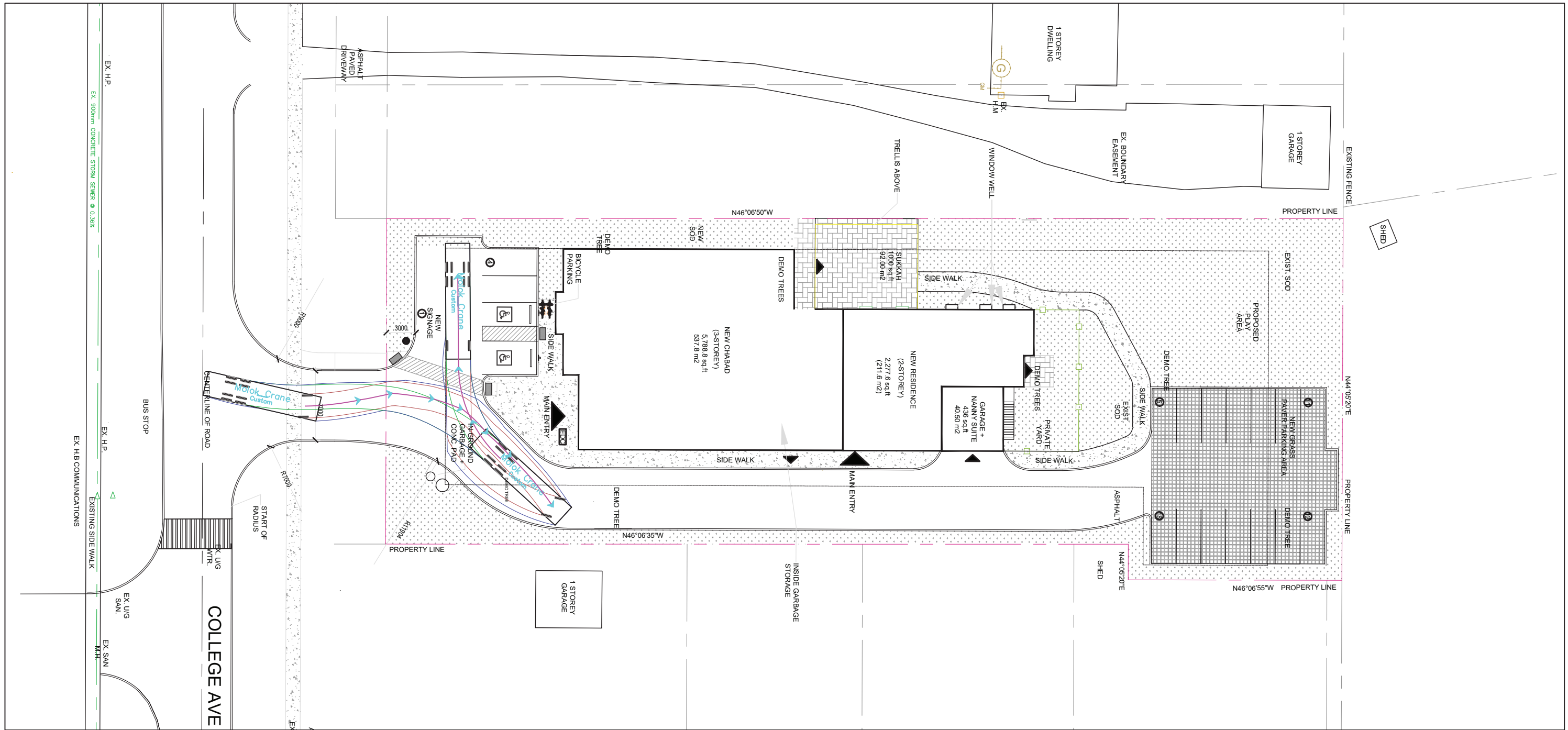
81 COLLEGE AVENUE WEST, GUELPH

**SWEPT PATH ANALYSIS  
 RIGHT TURN ENTRY**

PROJECT NO.  
25-1719

FIGURE NO.  
2

OF  
5



**RC SPENCER ASSOCIATES INC.**  
Consulting Engineers

Windsor: 800 University Ave. W. - Windsor, ON N9A 5R9  
Leamington: 18 Talbot St. W. - Leamington, ON N8H 1M4  
Chatham-Kent: 49 Raleigh St. - Chatham, ON N7M 2M6

Professional Engineers  
Ontario

DESIGN	M.M.H.			
CHECKED	A.D.B.			
DRAWN	M.M.H.			
CHECKED	A.D.B.			
SCALE	1:400			
NO.	REVISION	DATE	BY	APP
1.	ISSUED FOR APPROVAL	12 FEB. 2025	M.M.H.	A.D.B.

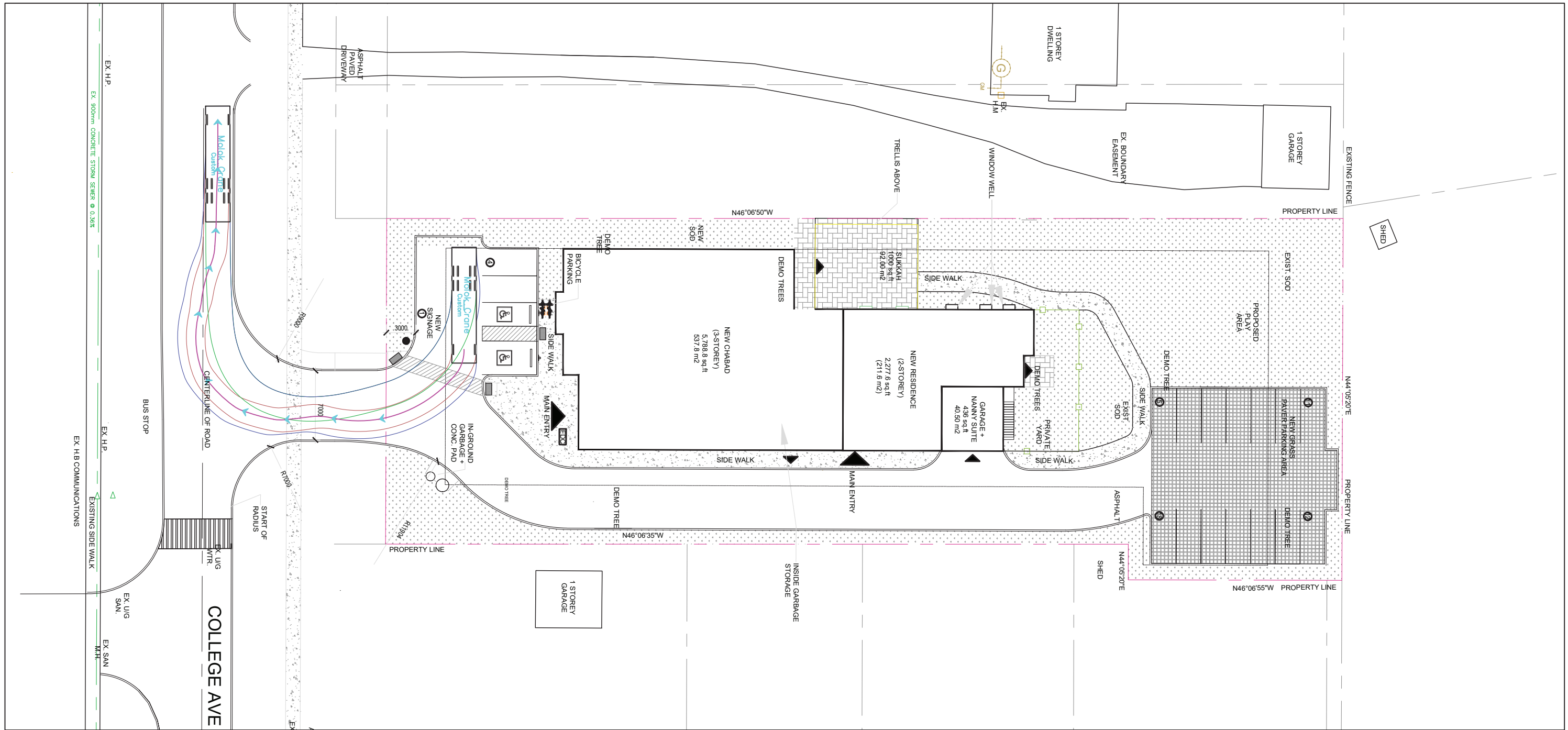
81 COLLEGE AVENUE WEST, GUELPH

**SWEPT PATH ANALYSIS  
INSIDE MANEUVERS**

PROJECT NO.  
25-1719

FIGURE NO.  
3

OF  
5



**RC SPENCER ASSOCIATES INC.**  
 Consulting Engineers

Windsor: 800 University Ave. W. - Windsor, ON N9A 5R9  
 Leamington: 18 Talbot St. W. - Leamington, ON N8H 1M4  
 Chatham-Kent: 49 Raleigh St. - Chatham, ON N7M 2M6

Professional Engineers  
 Ontario

DESIGN	M.M.H.			
CHECKED	A.D.B.			
DRAWN	M.M.H.			
CHECKED	A.D.B.			
SCALE	1:400			
NO.	REVISION	DATE	BY	APP
1.	ISSUED FOR APPROVAL	12 FEB. 2025	M.M.H.	A.D.B.

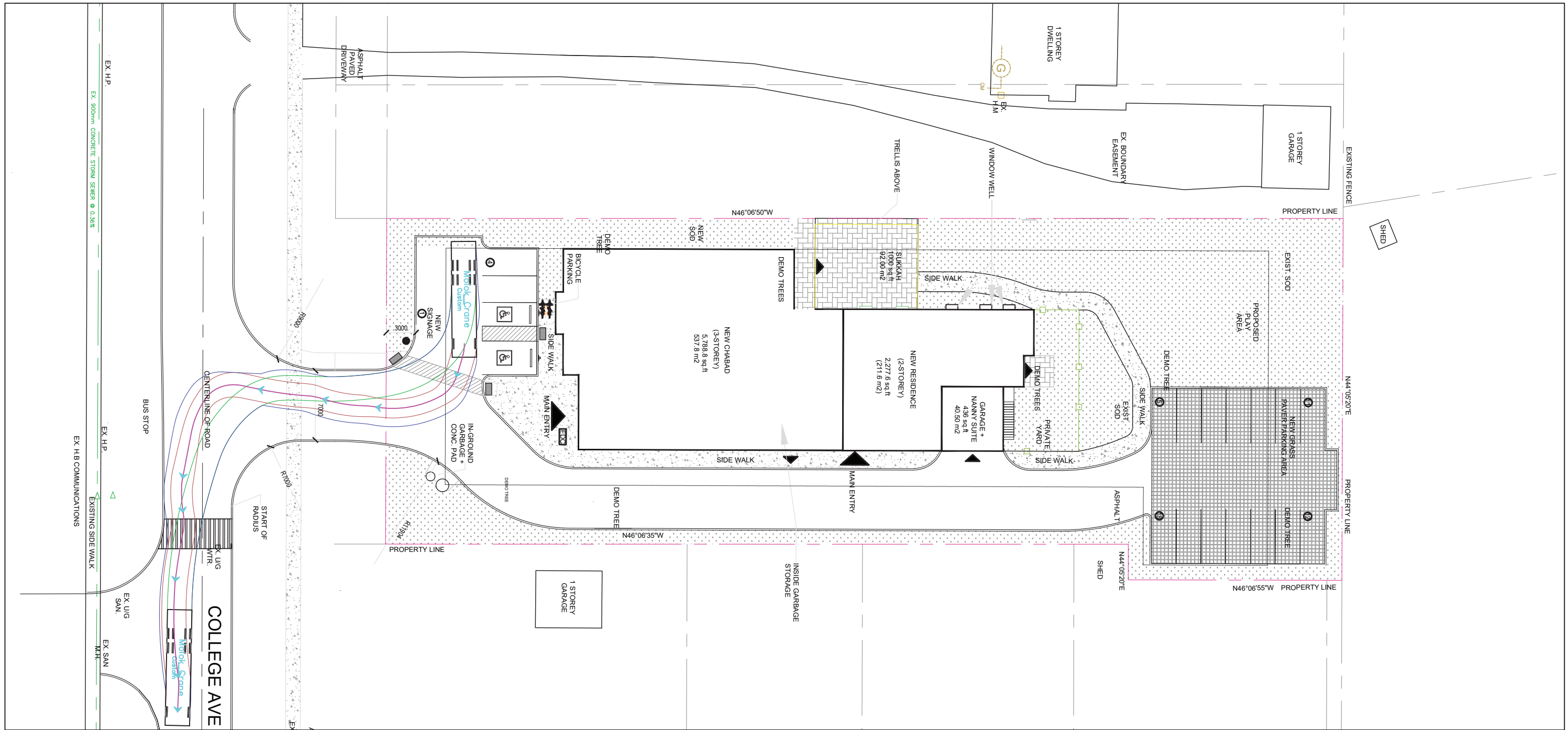
81 COLLEGE AVENUE WEST, GUELPH

**SWEPT PATH ANALYSIS  
 RIGHT TURN EGRESS**

PROJECT NO.  
25-1719

FIGURE NO.  
4

OF  
5



**RC SPENCER ASSOCIATES INC.**  
Consulting Engineers

Windsor: 800 University Ave. W. - Windsor, ON N9A 5R9  
 Leamington: 18 Talbot St. W. - Leamington, ON N8H 1M4  
 Chatham-Kent: 49 Raleigh St. - Chatham, ON N7M 2M6

Professional Engineers  
Ontario

DESIGN	M.M.H.			
CHECKED	A.D.B.			
DRAWN	M.M.H.			
CHECKED	A.D.B.			
SCALE	1:400			
NO.	REVISION	DATE	BY	APP
1.	ISSUED FOR APPROVAL	12 FEB. 2025	M.M.H.	A.D.B.

81 COLLEGE AVENUE WEST, GUELPH

**SWEPT PATH ANALYSIS  
LEFT TURN EGRESS**

PROJECT NO.  
25-1719

FIGURE NO.  
5

OF  
5