

**INTEGRATION DATA**

OBSERVED REFERENCE POINTS (ORPs): UTM ZONE 17, NAD83 (CSRS) (2010.0). COORDINATES TO URBAN ACCURACY PER SECTION 14 (2) OF O.REG 216/10.

| POINT ID | EASTING    | NORTHING     |
|----------|------------|--------------|
| ORP (A)  | 561 285.03 | 4 821 303.53 |
| ORP (B)  | 561 272.89 | 4 821 287.34 |


COORDINATES CANNOT, IN THEMSELVES, BE USED TO RE-ESTABLISH CORNERS OR BOUNDARIES SHOWN ON THIS PLAN.

ASSOCIATION OF ONTARIO LAND SURVEYORS  
 PLAN SUBMISSION FORM  
 2072591



THIS PLAN IS NOT VALID UNLESS IT IS AN EMBOSSED ORIGINAL COPY ISSUED BY THE SURVEYOR in accordance with Regulation 1026, Section 29(3).

PLAN OF SURVEY OF  
**PART OF LOTS 7 & 8**  
**REGISTERED PLAN 306**  
 CITY OF GUELPH  
 COUNTY OF WELLINGTON  
 SCALE 1 : 250



BLACK, SHOEMAKER, ROBINSON & DONALDSON LTD.  
 © COPYRIGHT

**METRIC** DISTANCES SHOWN ON THIS PLAN ARE IN METRES AND CAN BE CONVERTED TO FEET BY DIVIDING BY 0.3048.

**NOTES**  
 BEARINGS ARE UTM GRID, DERIVED FROM OBSERVED REFERENCE POINTS A AND B, BY REAL TIME NETWORK (RTN) OBSERVATIONS, UTM ZONE 17, NAD83 (CSRS) (2010.0).  
 DISTANCES ARE GROUND AND CAN BE CONVERTED TO GRID BY MULTIPLYING BY THE COMBINED SCALE FACTOR OF 0.999597.  
 FOR BEARING COMPARISONS, A ROTATION OF 0°5'20" CLOCKWISE WAS APPLIED TO BEARINGS ON P1, P2 & P3.


**LEGEND**

- DENOTES SURVEY MONUMENT FOUND (375 UNLESS NOTED OTHERWISE)
- DENOTES SURVEY MONUMENT SET
- SIB STANDARD IRON BAR
- RP ROCK POST
- IB IRON BAR
- IP IRON PIPE
- CC CUT CROSS
- WT WITNESS
- MEAS MEASURED
- Calc CALCULATED
- SRPR SURVEYOR'S REAL PROPERTY REPORT
- E OVERHEAD ELECTRICAL WIRE
- HP HYDRO POLE
- 375 BLACK, SHOEMAKER, ROBINSON & DONALDSON LTD.
- P1 SRPR BY 375 DATED: OCT. 30, 2007 FILE: 07-7443
- P2 SRPR BY 375 DATED: OCT. 14, 2009 FILE: 09-8174-1
- P3 SRPR BY 375 DATED: FEB. 14, 2011 FILE: 11-8758


**SURVEYOR'S CERTIFICATE**

I CERTIFY THAT:  
 1. THIS SURVEY AND PLAN ARE CORRECT AND IN ACCORDANCE WITH THE SURVEYS ACT, THE SURVEYORS ACT AND THE REGULATIONS MADE UNDER THEM.  
 2. THE SURVEY WAS COMPLETED ON THE 15th DAY OF MAY, 2019.

May 16, 2019  
 DATE

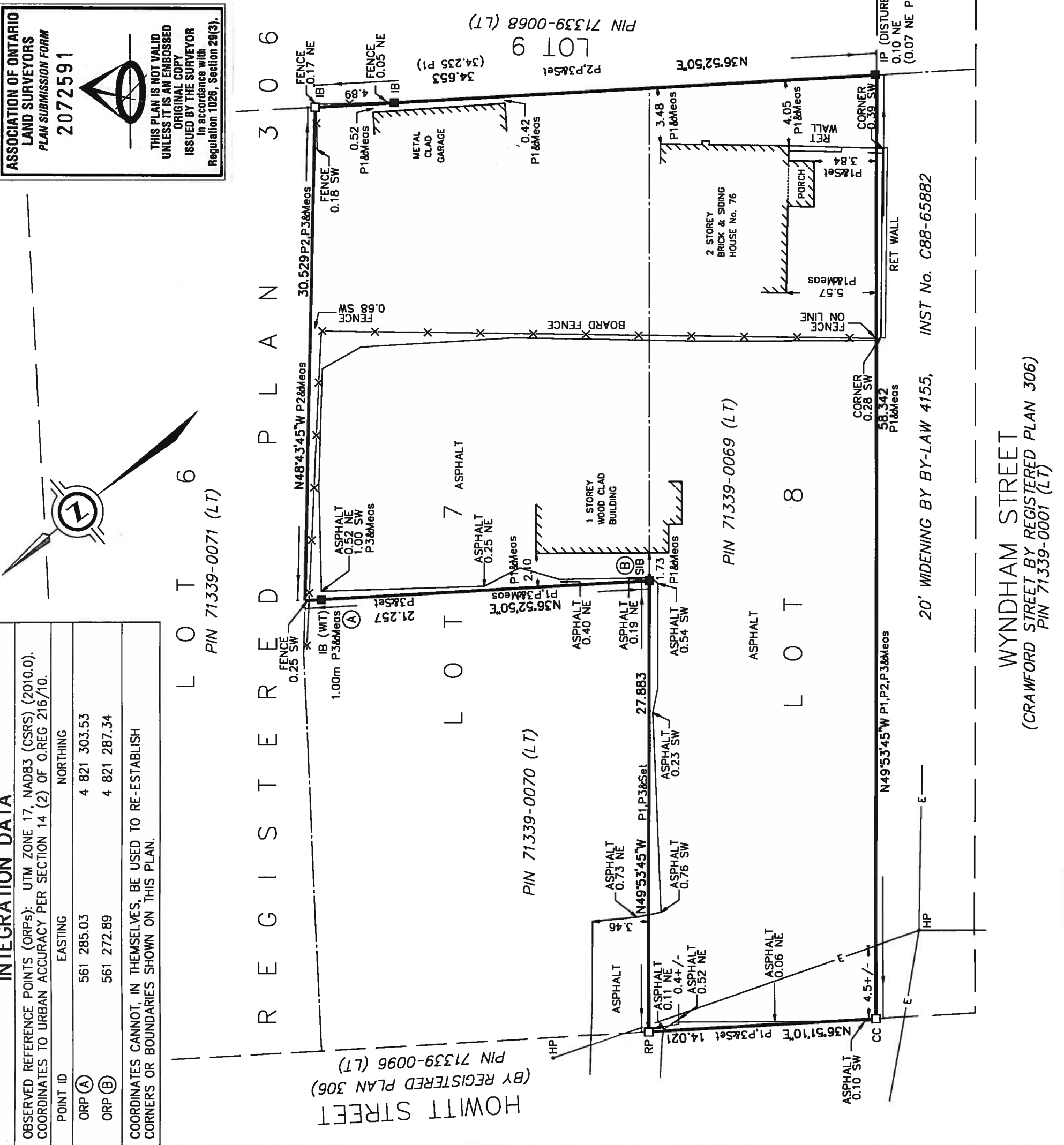


RAYMOND J. SIBTHORP  
 ONTARIO LAND SURVEYOR



**BSR&D**  
 ONTARIO LAND SURVEYORS SURVEYING  
 URBAN & RURAL PLANNERS MAPPING  
 A wholly owned subsidiary of J.D. Barnes Ltd. 015  
 257 WOODLAWN ROAD WEST #101, GUELPH, ON N1H 8J1  
 T: (519) 822-4031 F: (519) 822-1220 www.jdbarnes.com

RPA DRAWN CHECKED  
 DATED: MAY 16/2019  
 Ref. No. 19-14-876-00



WYNDHAM STREET  
 (CRAWFORD STREET BY REGISTERED PLAN 306)  
 PIN 71339-0001 (LT)

20' WIDENING BY BY-LAW 4155, INST No. C88-65882