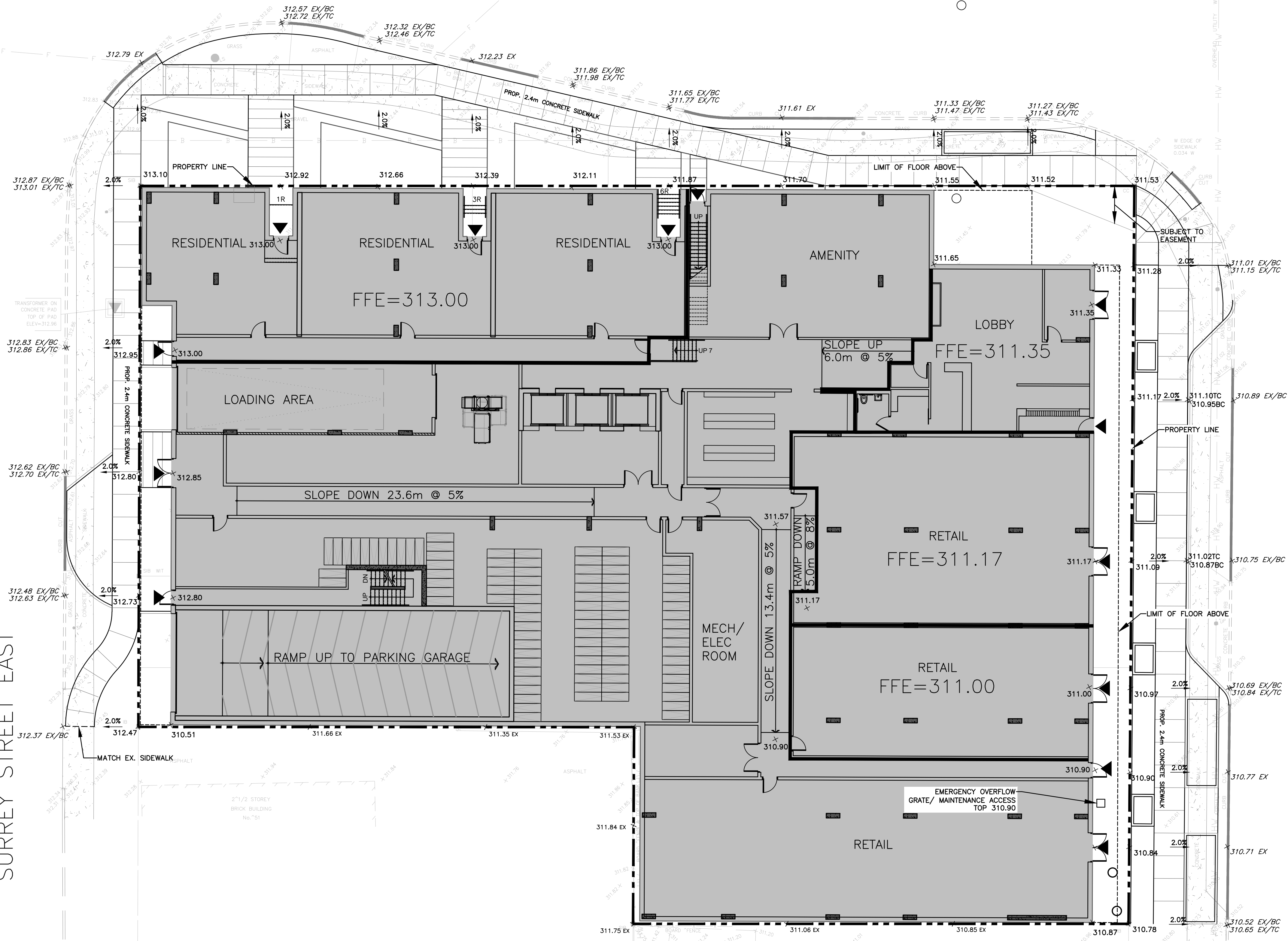


SURREY STREET EAST

WYNDHAM STREET SOUTH

WELLINGTON STREET EAST



KEY PLAN  
N.T.S.

- LEGEND:**
- 188.90 EX EXISTING ELEVATION
  - 6W188.50 EX EXISTING ELEVATION BOTTOM OF WALL
  - 2% DRAINAGE FLOW DIRECTION AND SLOPE
  - X 164.35 PROPOSED ELEVATION
  - X 164.35 TC PROPOSED TOP OF CURB ELEVATION
  - X 164.35 TW PROPOSED TOP OF WALL ELEVATION
  - X 164.35 BW PROPOSED BOTTOM OF WALL ELEVATION
  - STORM MANHOLE
  - AREA DRAIN
  - CATCHBASIN
  - SANITARY MANHOLE
  - ➔ PROP. OVERLAND FLOW DIRECTION
  - FFF FINISHED GROUND FLOOR ELEVATION
  - ▲ EXTERIOR DOOR LOCATION
  - ◻ HYDRO TRANSFORMER

**BENCHMARK NOTE:**  
ELEVATIONS HEREON ARE GEODETIC AND ARE DERIVED FROM GPS OBSERVATIONS.  
TOPOGRAPHIC SURVEY INFORMATION FROM BLACK, SHOEMAKER, ROBINSON & DONALDSON LTD., PROJECT No. 17-14-595-01, PREPARED ON FEBRUARY 17, 2018.

NO.	DATE	REVISIONS	BY
01.	12/19/22	ISSUED FOR COORDINATION	D.G.

**PRELIMINARY**

**VALDOR ENGINEERING INC.**  
Consulting Engineers - Project Managers  
571 CHESSA ROAD UNIT 4, 2ND FLOOR, WOODBRIDGE, ONTARIO, L4L 8A2  
TEL: (905) 244-0054, FAX: (905) 244-0099  
E-MAIL: info@valdor-engineering.com  
www.valdor-engineering.com

PROPOSED RESIDENTIAL DEVELOPMENT  
58 WELLINGTON STREET EAST  
CITY OF GUELPH

**FUNCTIONAL GRADING PLAN**

**NOTE**  
THIS PLAN HAS BEEN PREPARED TO DEMONSTRATE FEASIBILITY OF THE PROPOSED DEVELOPMENT WITH RESPECT TO GRADING IN CONJUNCTION WITH THE OFFICIAL PLAN AMENDMENT, ZONING BY-LAW AMENDMENT, AND DRAFT PLAN OF SUBDIVISION APPLICATIONS. DETAILED GRADING DESIGN WILL BE PREPARED AT THE SITE PLAN APPLICATION STAGE

SCALE	DATE OF DWG.	PROJECT NO.
1:150	JUL. 06, 2018	18127
DRAWN BY H.E.	DRAWING NO. <b>FGP-1</b>	
CHKD BY D.G.		