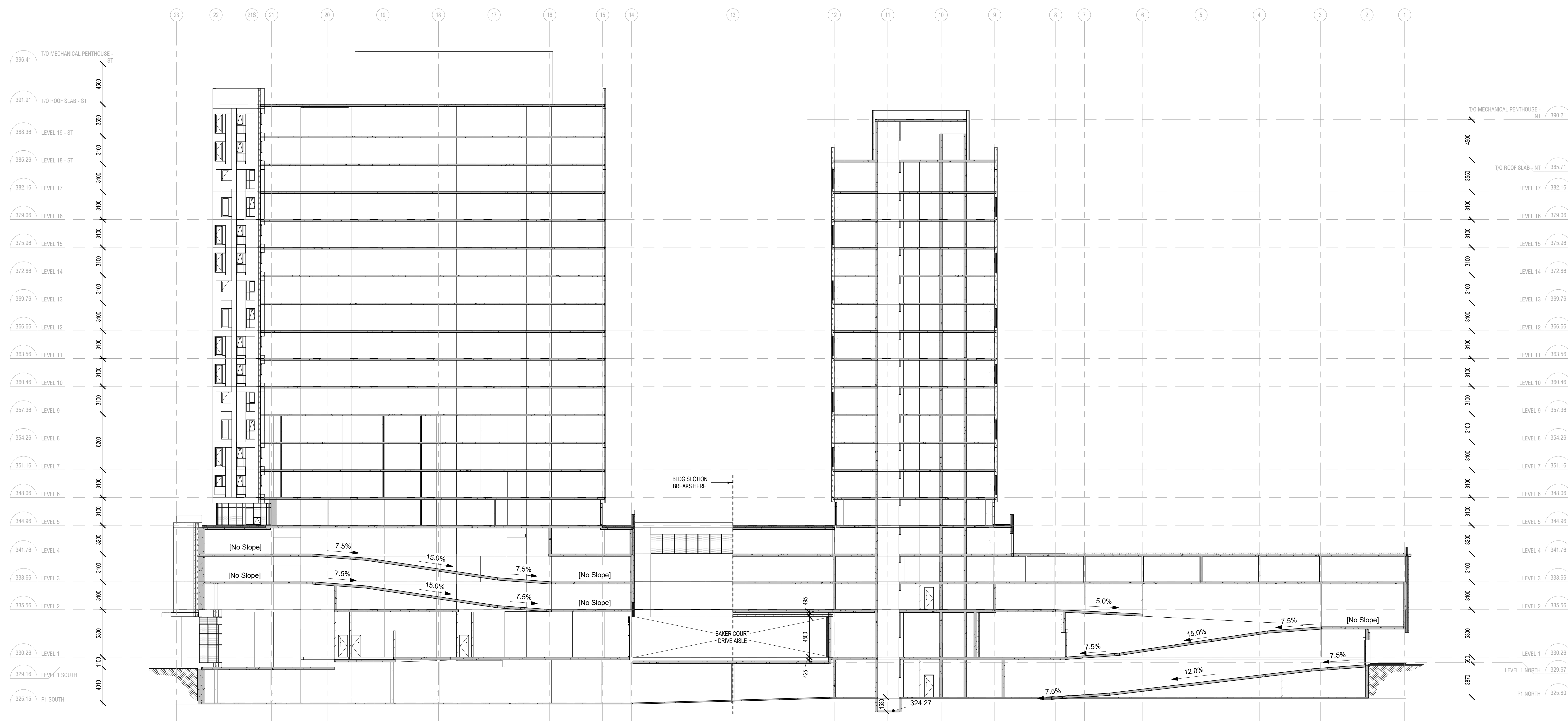


2 BLDG SECTION - NORTH-SOUTH SECTION 2
A400 1:200



1 BLDG SECTION - NORTH-SOUTH SECTION 1
A400 1:200

NO.	DATE	DESCRIPTION
1	2025-08-11	ISSUED FOR 2B/A

ISSUE RECORD

THE CONTRACTOR SHALL VERIFY AND BE RESPONSIBLE FOR ALL DIMENSIONS AND CONDITIONS ON THE JOB SITE AND SHALL INFORM THE ARCHITECT IMMEDIATELY OF ANY DISCREPANCY OR VARIATION FROM THE DRAWINGS. DO NOT SCALE THE DRAWINGS.

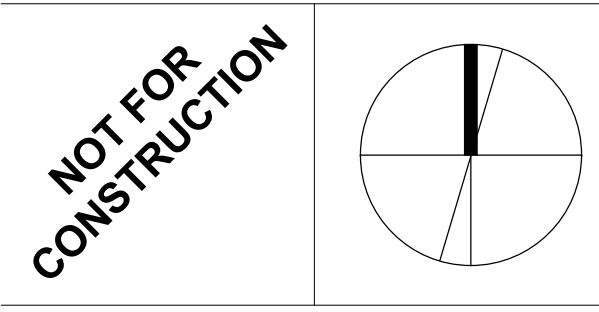
DRAWINGS ARE NOT TO BE USED FOR CONSTRUCTION UNTIL SIGNED BY THE ARCHITECT.

ALL DRAWINGS, SPECIFICATIONS AND RELATED DOCUMENTS ARE THE COPYRIGHT PROPERTY OF THE ARCHITECT AND MUST BE RETURNED UPON REQUEST. REPRODUCTION OF DRAWINGS, SPECIFICATIONS AND RELATED DOCUMENTS IN PART OR IN WHOLE IS FORBIDDEN WITHOUT WRITTEN PERMISSION.

windmill
30 Salsbury St
Toronto, Ontario M5C 1C5
T 416 968 7908
F 416 968 0887
www.wmsh.com

dtah
425 Adelaide St W
Suite 600
Toronto, Ontario M5V 3C1
T 416 968 7908
F 416 968 0887
www.dtah.com

DTAH Architects Limited



BAKER DISTRICT REDEVELOPMENT

55 BAKER STREET
PART BURYING GROUND, PLAN 8; PART LANE THROUGHBURYING GROUND, PLAN 8; CLOSED BY MS2025, AS IN MS78044, MS20082, CS8221; S/T INTEREST IF ANY, IN CS8221; PART BURYING GROUND, PLAN 8 AS IN CS1882; CITY OF GUELPH

160 WYNDHAM STREET NORTH & 152 WYNDHAM STREET NORTH
PART LOTS 73 AND 74, PART OF BURYING GROUND AND PART OF LANE AT THE REAR OF LOTS 73 AND 74 (AKA PARKLANE), CLOSED BY CS31228; REGISTERED PLAN 8; DESIGNATED AS PARTS 1, 2, 3 AND 4, REFERENCE PLAN 61R-21815, SUBJECT TO EASEMENT OVER PART 2, 61R-21815 AS IN INSTRUMENT ROSS57919 AND SUBJECT TO EASEMENT OVER PART 3, 61R-21815 AS IN INSTRUMENT ROSS73006; CITY OF GUELPH

DRAWING TITLE:
OVERALL BLDG SECTIONS

PRINT DATE: 2025-09-11
SCALE: 1:200
PROJECT NO: 24-016
DRAWN BY: SG
CHECKED BY: MT