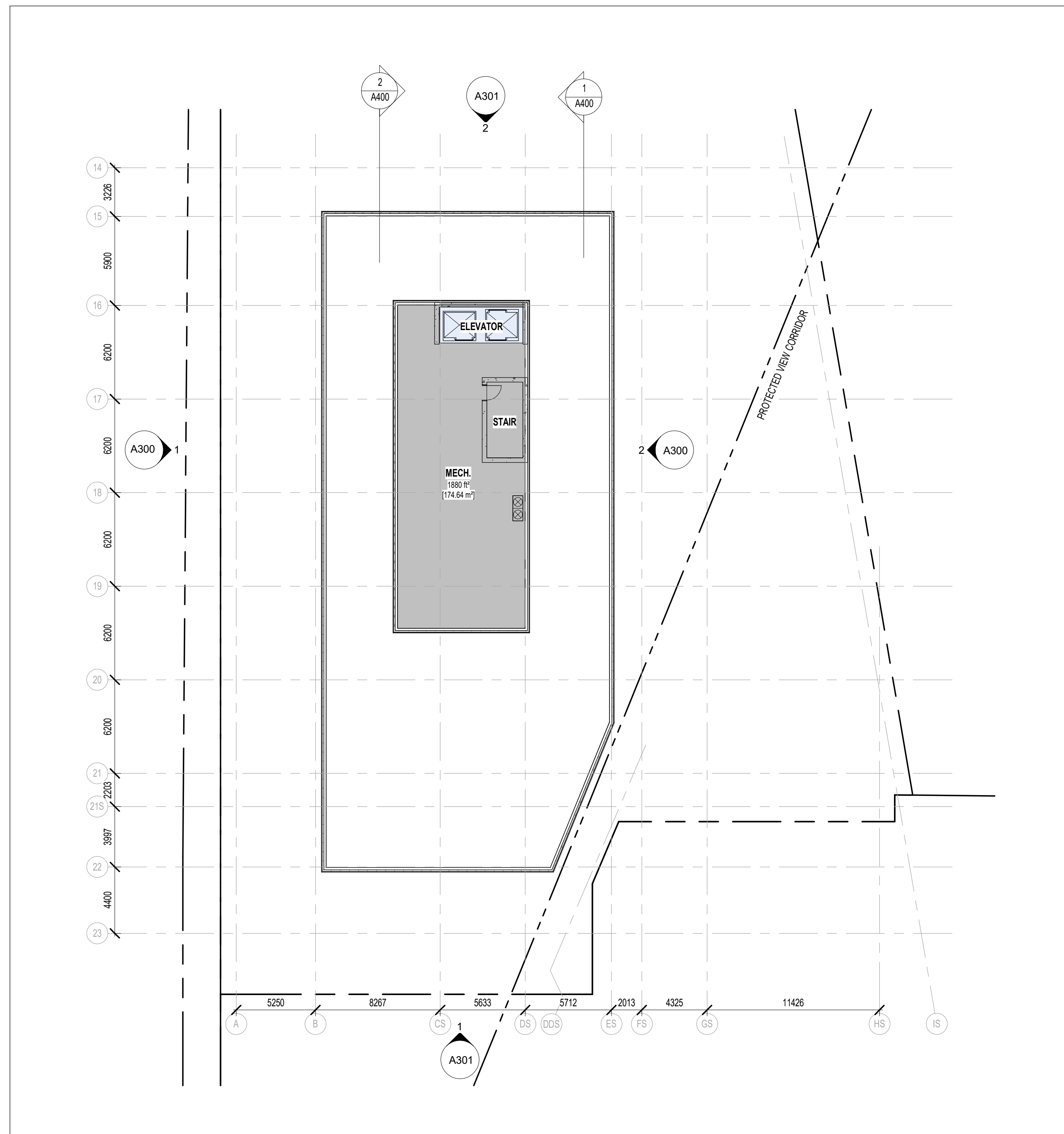


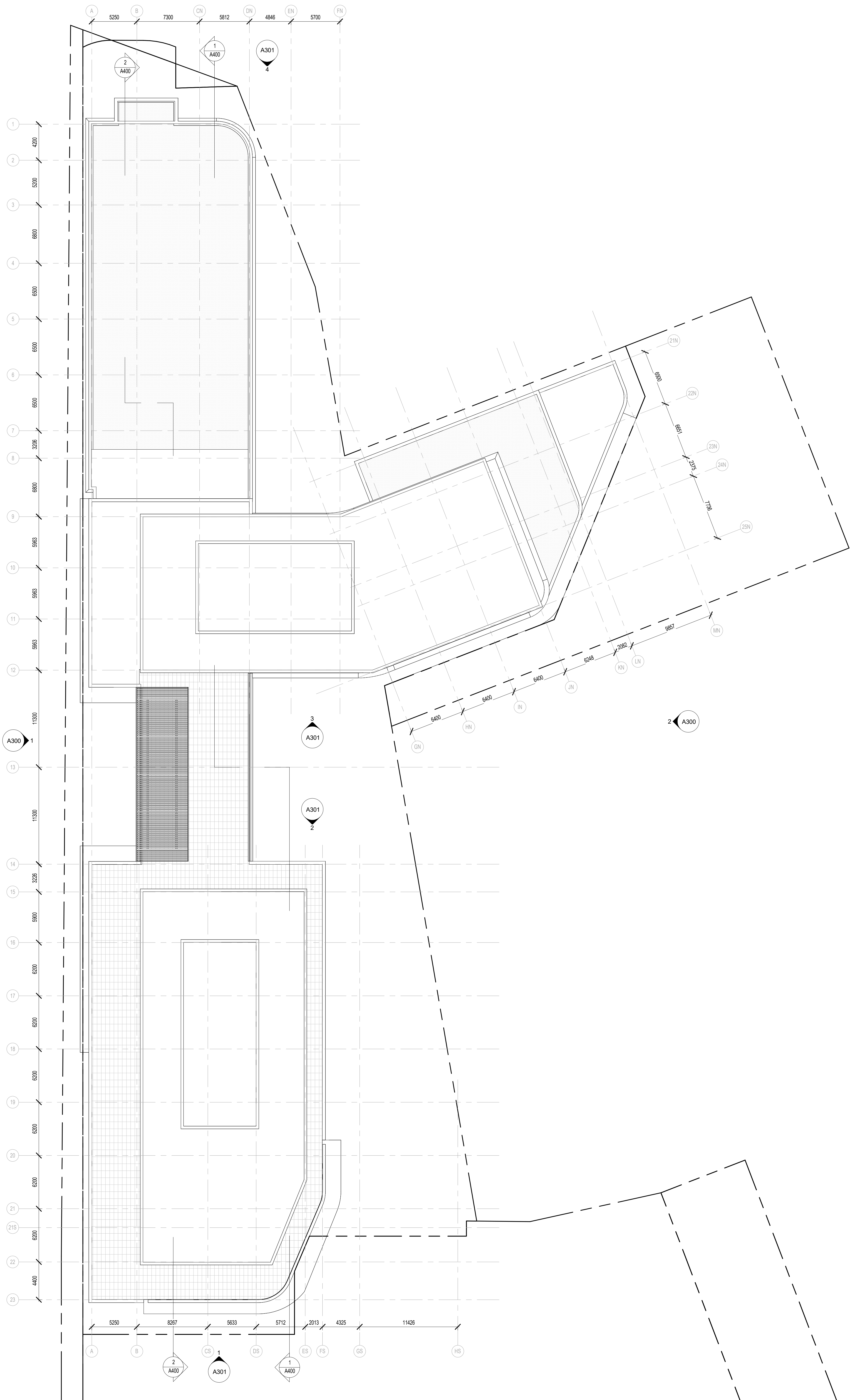
3 MPH - NORTH TOWER

A204 1 : 200



2 MPH - SOUTH TOWER

A204 1 : 200



1 OVERALL ROOF PLAN

A204 1 : 200

NO.	DATE	DESCRIPTION
-----	------	-------------

ISSUE RECORD

THE CONTRACTOR SHALL VERIFY AND BE RESPONSIBLE FOR ALL DIMENSIONS AND CONDITIONS ON THE JOB SITE AND SHALL INFORM THE ARCHITECTS IMMEDIATELY OF ANY DISCREPANCY OR VARIATION FROM THE DRAWINGS. DO NOT SCALE THE DRAWINGS.

DRAWINGS ARE NOT TO BE USED FOR CONSTRUCTION UNTIL SIGNED BY THE ARCHITECT.

ALL DRAWINGS, SPECIFICATIONS AND RELATED DOCUMENTS ARE THE COPYRIGHT PROPERTY OF THE ARCHITECT AND MUST BE RETURNED UPON REQUEST. REPRODUCTION OF DRAWINGS, SPECIFICATIONS AND RELATED DOCUMENTS IN PART OR IN WHOLE IS FORBIDDEN WITHOUT WRITTEN PERMISSION.

windmill

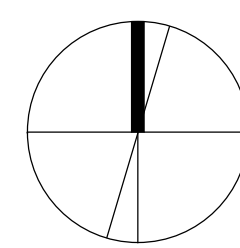
30 Sudbury St
Toronto, Ontario M5V 1G5
T 416 929 5254

dtah

DTAH Architects Limited

425 Adelaide St W
Suite 600
Toronto, Ontario
M5V 3C1
T 416 968 7908
F 416 968 0887
www.dtah.com

NOT FOR
CONSTRUCTION

**BAKER DISTRICT
REDEVELOPMENT**

55 BAKER STREET

PART BURYING GROUND, PLAN 8; PART LANE THROUGH BURYING GROUND, PLAN 8; CLOSED BY MS80255, AS IN MS78644, MS20062, CS58221; S/T INTEREST IF ANY, IN CS58221; PART BURYING GROUND, PLAN 8 AS IN CS51882; CITY OF GUELPH

160 WYNDHAM STREET NORTH & 152 WYNDHAM STREET NORTH

PART LOTS 73 AND 74, PART OF BURYING GROUND AND PART OF LANE AT THE REAR OF LOTS 73 AND 74 (AKA PARKLANE), CLOSED BY CS51228, REGISTERED PLAN 8; DESIGNATED AS PARTS 1, 2, 3 AND 4, REFERENCE PLAN 61R-21815, SUBJECT TO EASEMENT OVER PART 2, 61R-21815 AS IN INSTRUMENT ROSS57919 AND SUBJECT TO EASEMENT OVER PART 3, 61R-21815 AS IN INSTRUMENT ROSS75090; CITY OF GUELPH

DRAWING TITLE:

OVERALL PLANS -
MECHANICAL PENTHOUSE
AND ROOF PLAN

PRINT DATE: 2025-09-11

SCALE: 1 : 200

PROJECT NO. 24-016

DRAWN BY: SG

CHECKED BY: MT

A204