

**NOTES:**

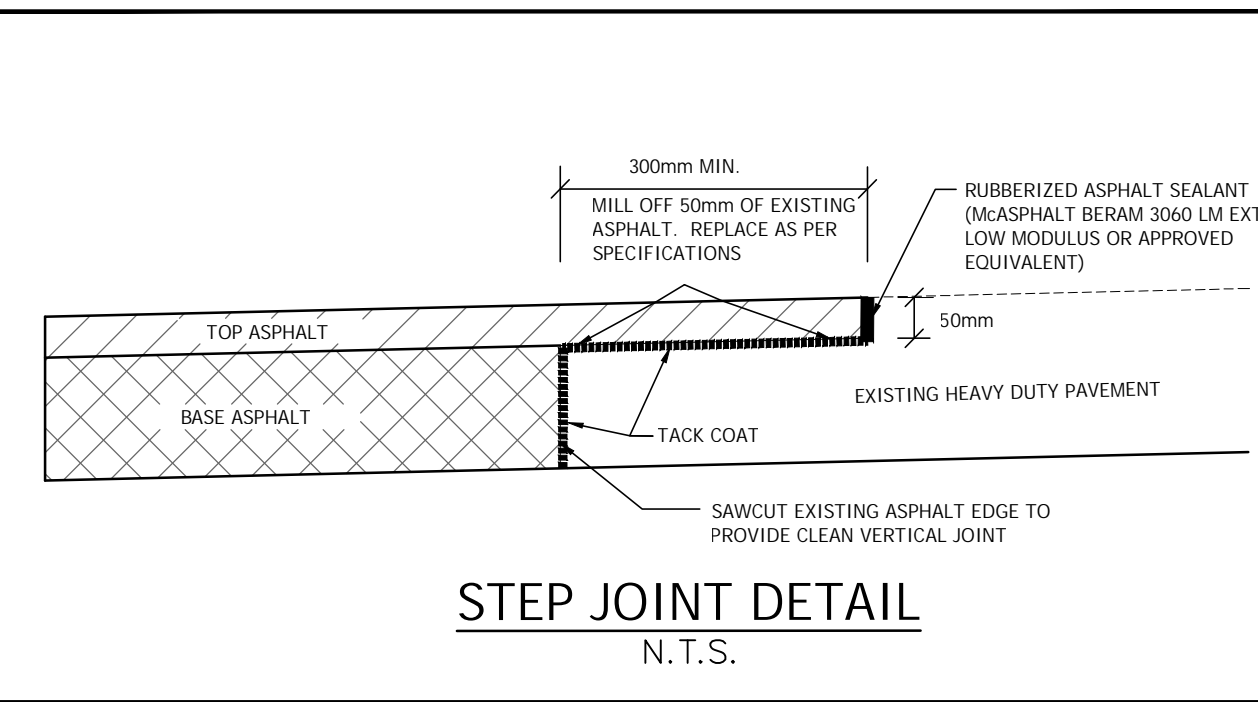
- O.D. = OUTSIDE DIAMETER OF PIPE.
- STONE SIZE WITHIN 300mm OF PIPE SURFACE SHALL NOT EXCEED 75mm.
- IN ROCK TRENCHES, BEDDING DEPTH (d) BELOW WATERMAINS AND SEWER PIPES SHALL BE INCREASED TO 300mm.
- FOR PURPOSE OF CONTRACT SPECIFICATIONS BEDDING INCLUDES HAUNCHING & COVER MATERIAL.
- IN WET TRENCH CONDITIONS HL-B COARSE AGGREGATE MAY BE USED TO INVERT OF PIPE. THE BEDDING BELOW INVERT SHALL BE WRAPPED IN FILTER FABRIC (TERRATEX 270 R OR APPROVED EQUAL) WHERE DIRECTED BY THE ENGINEER.

CITY OF GUELPH STANDARD DRAWING

**STANDARD BEDDING FOR SEWERS AND WATERMAINS**

DATE DRAWN: REV. NO.: R-5  
 DESCRIPTION: REVIEWED FEB/2008  
 REV. DATE: REV. BY: FEB/05 G.F.A.M.E.C.  
 APPROVED BY: [Signature]  
 CITY ENGINEER

**SD - 29**

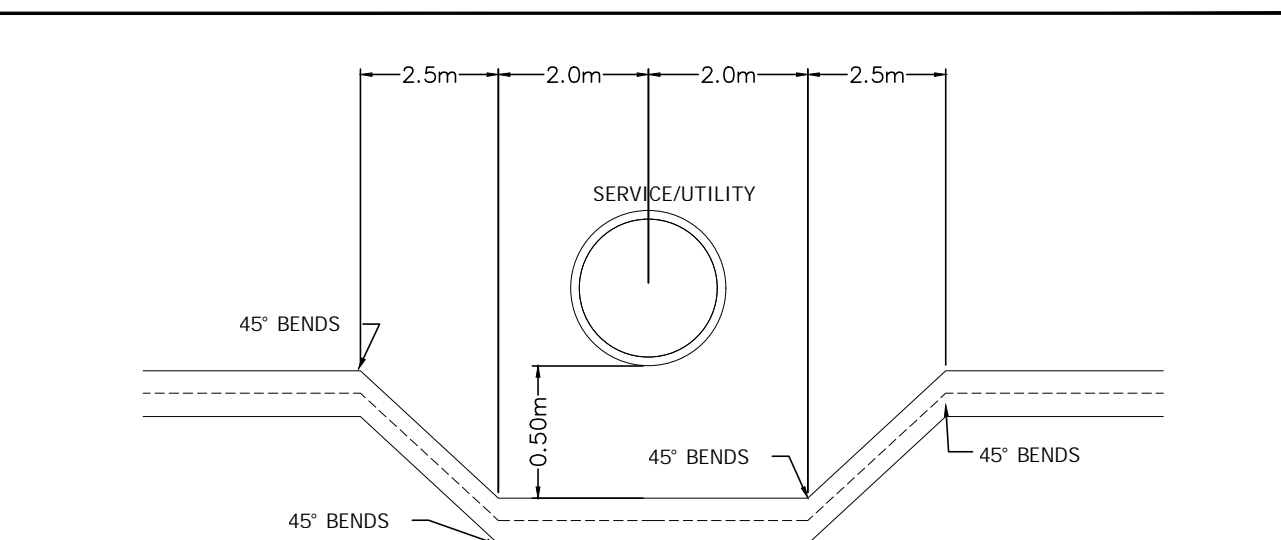


SIZE OF PIPE	A	B	C	D	E	F	G	H	I	J	K	L	M	N	O
100	100	150	150	150	150	150	150	150	150	150	150	150	150	150	150
150	150	200	200	200	200	200	200	200	200	200	200	200	200	200	200
200	200	250	250	250	250	250	250	250	250	250	250	250	250	250	250
250	250	300	300	300	300	300	300	300	300	300	300	300	300	300	300
300	300	350	350	350	350	350	350	350	350	350	350	350	350	350	350
400	400	450	450	450	450	450	450	450	450	450	450	450	450	450	450

**THRUST BLOCKING FOR WATERMAINS**

DATE DRAWN: REV. NO.: R-2  
 DESCRIPTION: REVIEWED FEB/2008  
 REV. DATE: REV. BY: FEB/05 G.F.A.M.E.C.  
 APPROVED BY: [Signature]  
 CITY ENGINEER

**SD - 27**



**NOTES:**

- MINIMUM 0.50m SEPARATION BETWEEN SERVICE/UTILITY AND WATERMAIN TO BE MAINTAINED AT ALL TIMES.
- WATERMAIN DEFLECTION TO BE CENTERED TO EXISTING SERVICE/UTILITY.
- CONTRACTOR TO VERIFY INVERTS IN THE FIELD AND REPORT ANY DISCREPANCIES TO THE ENG.
- GRANULAR BEDDING AS PER GEOTECHNICAL AND MUNICIPAL REQUIREMENTS.

CITY OF GUELPH STANDARD DRAWING

**WATERMAIN DEFLECTION DETAIL**

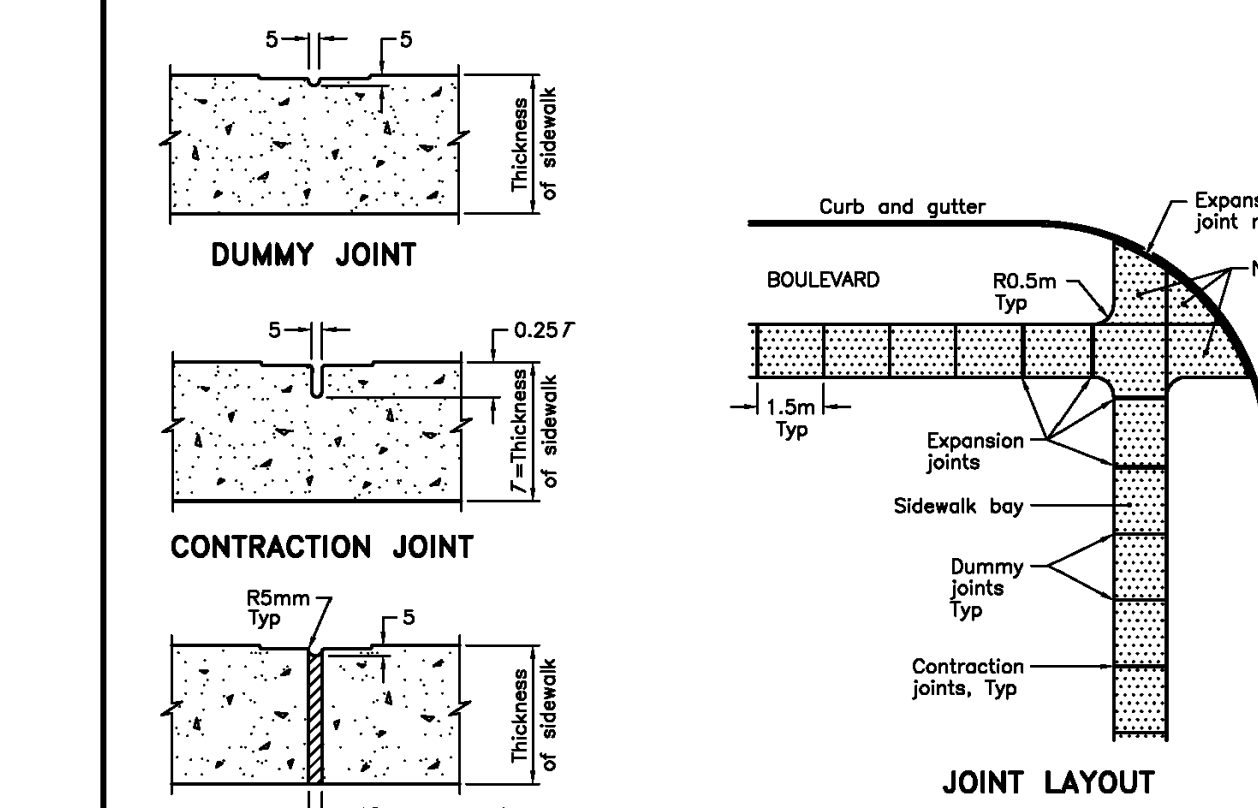
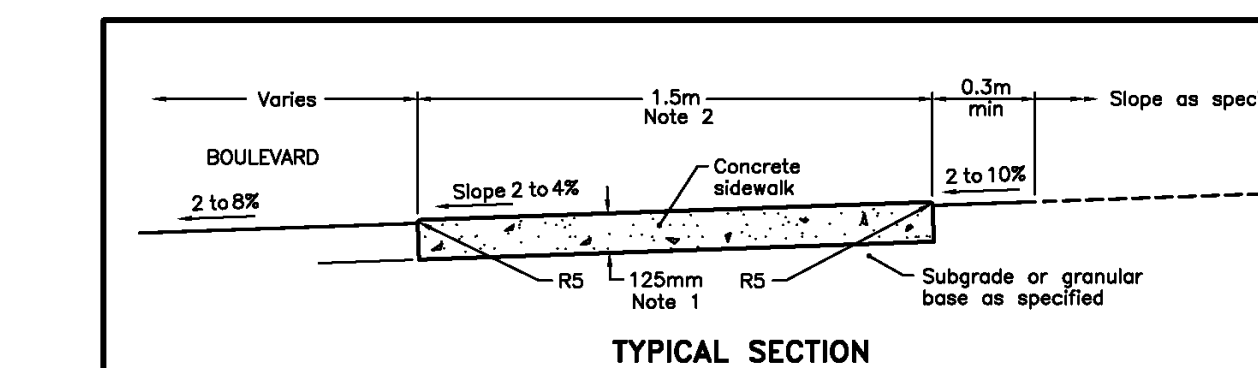
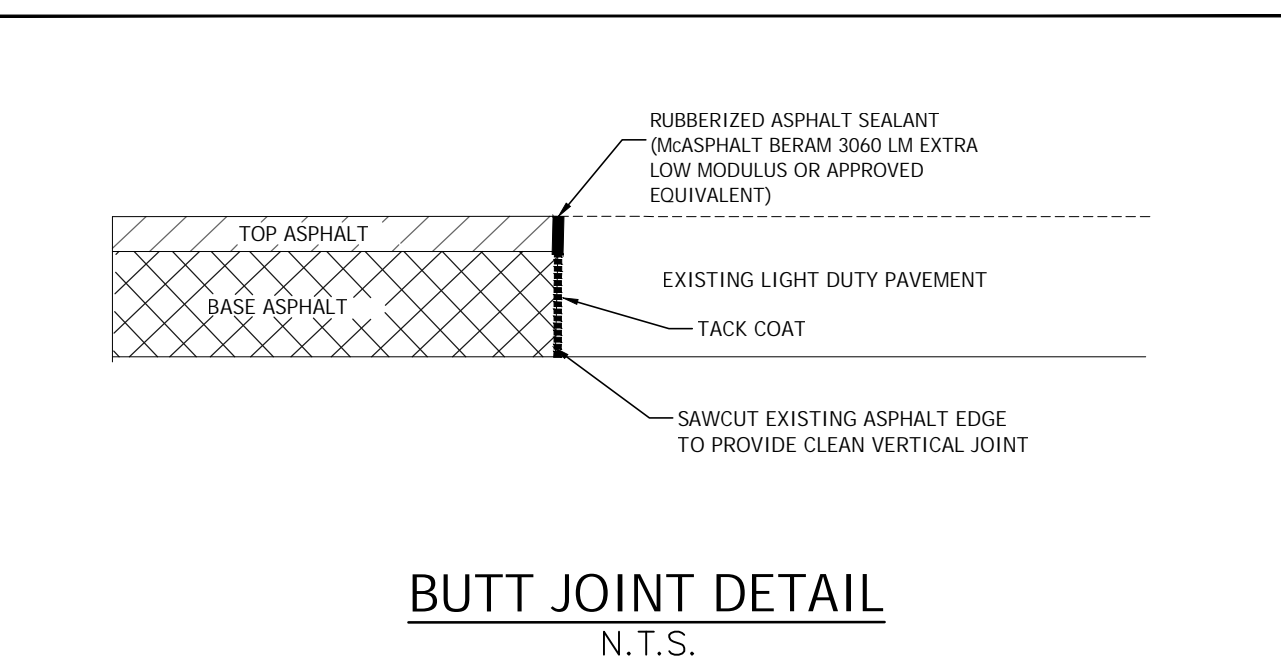
DATE DRAWN: REV. NO.: N.T.S.  
 DESCRIPTION: REVIEWED FEB/2008  
 REV. DATE: REV. BY: OCT 2007  
 APPROVED BY: [Signature]  
 CITY ENGINEER

**ER09**

**PRIVATE HYDRANT INSTALLATION**

DATE DRAWN: REV. NO.: R-3  
 DESCRIPTION: REVIEWED FEB/2012  
 REV. DATE: REV. BY: FEB/12 G.F.A.M.E.C.  
 APPROVED BY: [Signature]  
 CITY ENGINEER

**SD - 25a**



**NOTES:**

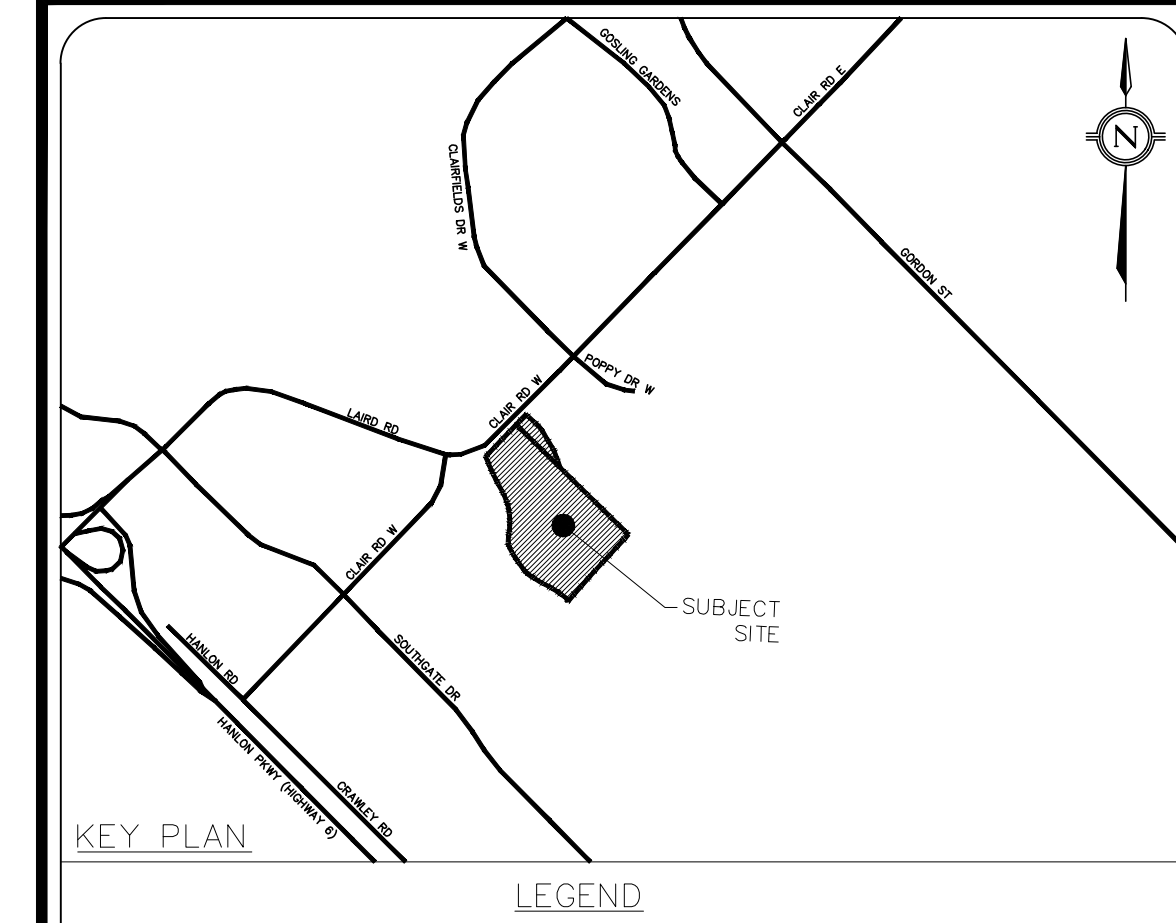
- Sidewalk thickness at residential driveways and adjacent to curb shall be 150mm. At commercial and industrial driveways, the thickness shall be 200mm.
- Sidewalk width shall be increased to 2.4m at schools, bus stops, and other high pedestrian areas.

A This OPSD to be read in conjunction with OPSD-310.030.  
 B All dimensions are in millimetres unless otherwise shown.

ONTARIO PROVINCIAL STANDARD DRAWING

**CONCRETE SIDEWALK**

Nov 2005 Rev 1  
**OPSD - 310.010**



**LEGEND**

**LEGAL & TOPOGRAPHY**

PROVIDED BY: J.D. BARNES LIMITED  
 257 WOODLAWN ROAD WEST, UNIT 101  
 GUELPH, ON N1H 8J1  
 PHONE: (519) 822-4031

**BENCHMARK AND ELEVATION**

ELEVATIONS SHOWN HEREON ARE GEODETIC (CGVD28-1978) AND ARE DERIVED FROM GNSS OBSERVATIONS USING NATURAL RESOURCES CANADA'S GEOD MODEL HTV2.0

BEARINGS ARE UTM GRID, DERIVED FROM OBSERVED REFERENCE POINTS A AND B, BY REAL TIME NETWORK (RTN) OBSERVATIONS, UTM ZONE 17, NAD83 (CSRS) (2010.0).

1	ISSUED FOR REZONING #1 (30%)	20/11/2024	BY: CITY
No.	REVISIONS/ISSUED	DATE	

**counterpoint ENGINEERING**

A SUBSIDIARY OF DILLON CONSULTING LIMITED  
 8395 June St., Suite 100, Vaughan, ON L4K 5Y2 Phone 905.326.1404 Fax 905.326.1405

**J.S. YOGANATHAN**  
 LICENSED PROFESSIONAL ENGINEER  
 100100545  
 NOV 20/24  
 PROVINCE OF ONTARIO  
 ENGINEER'S STAMP

**APPLICANT:**

**HOME OPPORTUNITIES**  
 478 QUEEN STREET EAST, SUITE 201  
 TORONTO, ON M5A 1T7  
 PHONE: (416) 504-9855

**SITE LOCATION:**

280 CLAIR ROAD WEST  
 GUELPH, ON N1L 1G1

**SITE PLAN FILE NO.:**

**DETAILS**

DESIGNED BY: J.Y.	CHECKED BY: J.H.	DATE: SEPTEMBER, 2024
DRAWING BY: G.D.	CHECKED BY: J.H.	PROJECT NO. 24010
SWM BY: J.H.	CHECKED BY: J.H.	DRAWING NO. SW-D1
SCALE: N.T.S.		