

LAYFIELD CATCHBASIN PROTECTION ON PROPOSED CATCHBASINS AND CATCHBASIN MANHOLES. MAINTAIN THROUGHOUT CONSTRUCTION (TYP.)

PROPOSED SILT FENCE AS PER OPSD 219.130. MAINTAIN THROUGHOUT CONSTRUCTION.

GIVEN THE DESIGN INFILTRATION RATE OF 36 MM/HR (WHICH IS BASED ON MEASURED RATES OF 81 MM/HR TO 202 MM/HR) FOR THE EXISTING SOILS/EARTH ON SITE, ALL RAINFALL DURING CONSTRUCTION IS EXPECTED TO INFILTRATE AWAY ON SITE.

LAYFIELD CATCHBASIN PROTECTION ON PROPOSED CATCHBASINS AND CATCHBASIN MANHOLES. MAINTAIN THROUGHOUT CONSTRUCTION (TYP.)

PROPOSED DOUBLE SILT FENCE AS PER OPSD 219.130. MAINTAIN THROUGHOUT CONSTRUCTION.

EROSION AND SEDIMENT CONTROL

PRIOR TO CONSTRUCTION OR STRIPPING TOPSOIL, THE CONTRACTOR SHALL MAKE PROVISIONS TO PROVIDE "GOOD HOUSINGKEEPING" MEASURES TO MITIGATE THE TRANSPORTATION OF SILT FROM THE SITE. THESE MEASURES SHALL INCLUDE, BUT ARE NOT LIMITED TO THE FOLLOWING:

1. PROVIDE SILT FENCES AROUND THE PERIMETER OF THE SITE TO REDUCE SILT FROM LEAVING THE SITE.
2. PROVIDE SILT TRAPS AT CATCHBASINS UPON THEIR INSTALLATION TO REDUCE THE AMOUNT OF SILT ENTERING THE SEWER SYSTEM DURING CONSTRUCTION.
3. USE OF "MUD MAT" OR TEMPORARY TRACKING CONTROL AT THE ENTRANCE OF THE SITE TO MINIMIZE MUD TRACKING FROM THE SITE. (OWNER SHALL CLEAN ADJACENT ROADS ON A REGULAR BASIS)
4. PROVIDE ROCK CHECK DAMS WITH FILTER CLOTH IN ANY TEMPORARY DRAINAGE SWALES DURING CONSTRUCTION.
5. STABILIZE SITE AS SOON AS POSSIBLE BY RE-ESTABLISHING VEGETATIVE GROUND COVER AND AVOIDING BARE SOIL AREAS. ALL AREAS (INCLUDING STOCKPILES) WHERE SITE IMPROVEMENTS ARE NOT EXPECTED TO OCCUR IMMEDIATELY SHALL BE REVEGETATED WITH 100mm TOPSOIL AND HYDROSEEDING IN ACCORDANCE WITH OPSD 570 & 572.
6. ALL DRAINAGE WORKS REQUIRE EROSION/SEDIMENT CONTROL SATISFACTORY TO THE APPROVAL AGENCIES DURING CONSTRUCTION PERIOD AND MUST BE MONITORED AND MAINTAINED ON A REGULAR BASIS TO ENSURE MAXIMUM BENEFIT AND MINIMUM SILT MIGRATION OFF-SITE.

ESC PHASE 2 NOTES:

1. EROSION AND SEDIMENT CONTROL MEASURES TO BE COMPLETED AFTER SERVICING AND GRADING IS COMPLETE.
2. WEEKLY INSPECTIONS OF ESC MEASURES AND AFTER RAINFALL EVENTS IS REQUIRED WITH REPORTING.
3. REGULAR MAINTENANCE TO REMOVE ACCUMULATED SEDIMENT AND REPAIR ESC MEASURES IS REQUIRED.

CLAIR ROAD WEST

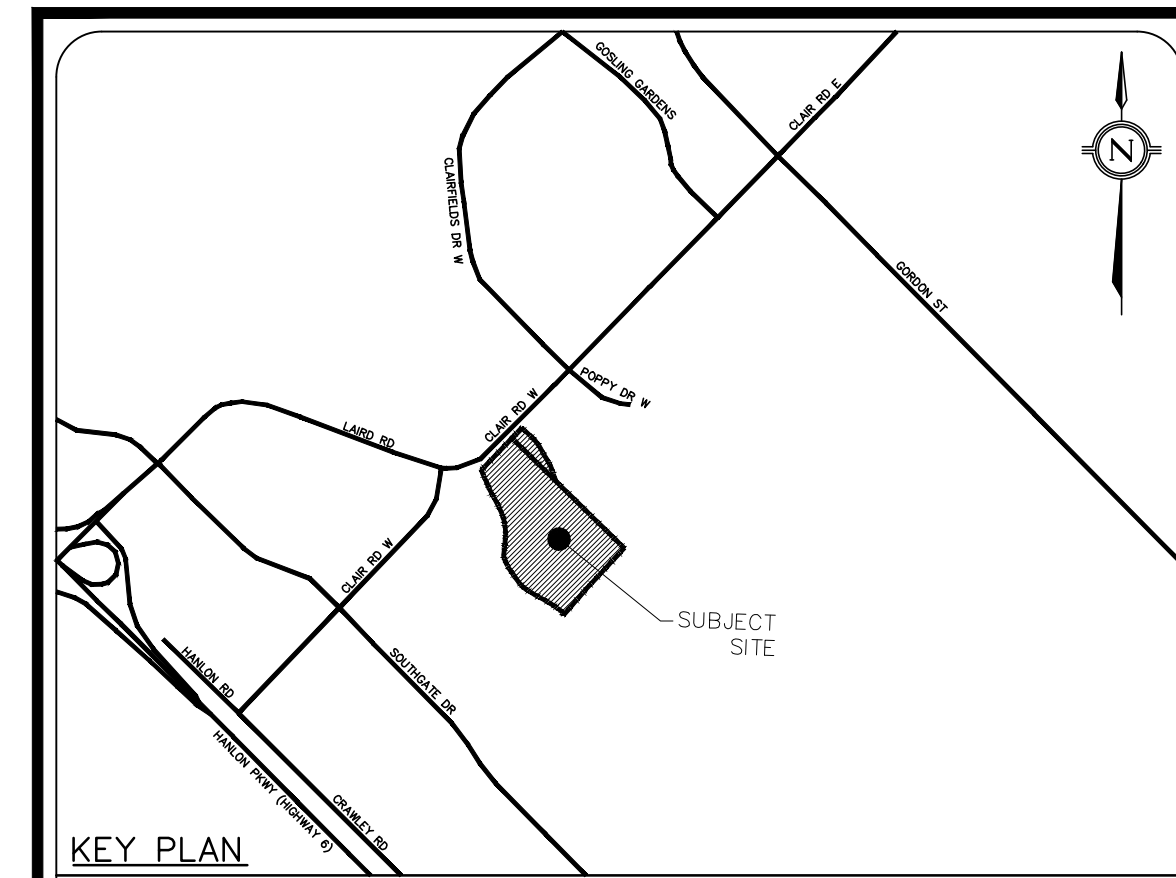
MUD MAT AT SITE ENTRANCE AS PER DETAIL ON DRAWING SW-D1, INCLUDING MAINTENANCE THROUGHOUT CONSTRUCTION AS DIRECTED BY THE ENGINEER.

RIP RAP TREATMENT: 150-250mm, MIN. 300mm THICK STONES. APRON 3.0m LONG, 2.0m WIDE AT THE OUTLET AND 3.7m WIDE AT THE END OF THE APRON.

NOTE: MAXIMUM BASIN VOLUME: 2410 Cu.m UTILIZED VOLUME: 493 Cu.m MAXIMUM DRAW DOWN TIME BASED ON A MAXIMUM HEIGHT OF 1.5m AND INFILTRATION RATE OF 36mm/hr: 44 hrs.

NOTE: MAXIMUM BASIN VOLUME: 3785 Cu.m UTILIZED VOLUME: 3218 Cu.m MAXIMUM DRAW DOWN TIME BASED ON A MAXIMUM HEIGHT OF 1.5m AND INFILTRATION RATE OF 36mm/hr: 41 hrs.

RIP RAP TREATMENT: 200-300mm, MIN. 300mm THICK STONES. APRON 4.0m LONG, 2.5m WIDE AT THE OUTLET AND 5.7m WIDE AT THE END OF THE APRON.



LEGEND

- 330.00 EXISTING CONTOURS
- 335.25 EXISTING ELEVATIONS
- EXISTING STORM MANHOLE
- EXISTING SANITARY MANHOLE
- PROPOSED STORM MANHOLE
- PROPOSED CATCHBASIN
- PROPOSED CATCHBASIN MANHOLE
- PROPOSED SANITARY MANHOLE
- PROPERTY LINE
- CONSTRUCTION ENTRANCE
- LAYFIELD SEDIMENT TRAP
- PROPOSED SILT FENCE
- LIMIT OF CONSTRUCTION

LEGAL & TOPOGRAPHY
 PROVIDED BY: J.D. BARNES LIMITED
 257 WOODLAWN ROAD WEST, UNIT 101
 GUELPH, ON N1H 8J1
 PHONE: (519) 822-4031

BENCHMARK AND ELEVATION
 ELEVATIONS SHOWN HEREON ARE GEODETIC (CGVD28-1978) AND ARE DERIVED FROM GNSS OBSERVATIONS USING NATURAL RESOURCES CANADA'S GEOD MODEL HTV2.0
 BEARINGS ARE UTM GRID, DERIVED FROM OBSERVED REFERENCE POINTS A AND B, BY REAL TIME NETWORK (RTN) OBSERVATIONS, UTM ZONE 17, NAD83 (CSRS) (2010.0).

No.	ISSUED FOR REZONING #1 (30%)	DATE	BY	CITY
1	ISSUED FOR REZONING #1 (30%)	20/11/2024		

counterpoint ENGINEERING
 A SUBSIDIARY OF DILLON CONSULTING LIMITED
 8385 Jane St., Suite 100, Vaughan, ON L4K 5Y2 Phone 905.326.1404 Fax 905.326.1405

ENGINEER'S STAMP
 LICENSED PROFESSIONAL ENGINEER
 J. S. YOGANATHAN
 100100545
 NOV 2024
 PROVINCE OF ONTARIO

APPLICANT:
HOME OPPORTUNITIES
 478 QUEEN STREET EAST, SUITE 201
 TORONTO, ON M5A 1T7
 PHONE: (416) 504-9855

SITE LOCATION:
 280 CLAIR ROAD WEST
 GUELPH, ON N1L 1G1

SITE PLAN FILE No.:

EROSION AND SEDIMENT CONTROL PLAN (STAGE 2)

DESIGNED BY: J.Y.	CHECKED BY: J.H.	DATE: SEPTEMBER, 2024
DRAWING BY: G.D.	CHECKED BY: J.H.	PROJECT NO. 24010
SWM BY: J.H.	CHECKED BY: J.H.	SCALE: 0m 25m 50m 75m
SCALE: 1:500m		DRAWING NO. SW-ESC3