

MUD MAT AT SITE ENTRANCE AS PER DETAIL ON DRAWING SW-D1, INCLUDING MAINTENANCE THROUGHOUT CONSTRUCTION AS DIRECTED BY THE ENGINEER.

PROPOSED SILT FENCE AS PER OPSD 219.130, MAINTAIN THROUGHOUT CONSTRUCTION.

GIVEN THE DESIGN INFILTRATION RATE OF 36 MM/HR (WHICH IS BASED ON MEASURED RATES OF 81 MM/HR TO 202 MM/HR) FOR THE EXISTING SOILS/EARTH ON SITE, ALL RAINFALL DURING CONSTRUCTION IS EXPECTED TO INFILTRATE AWAY ON SITE.

PROPOSED DOUBLE SILT FENCE AS PER OPSD 219.130, MAINTAIN THROUGHOUT CONSTRUCTION.

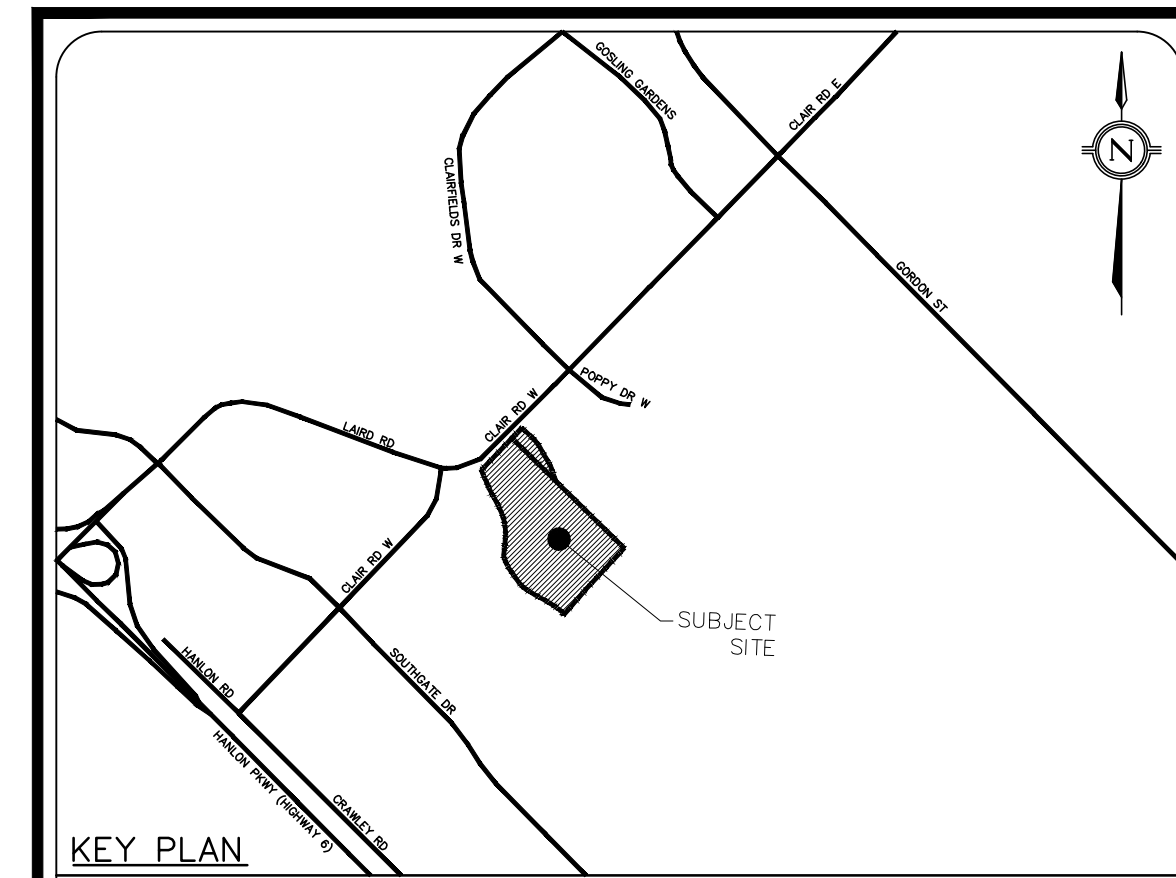
PROPOSED SILT FENCE AS PER OPSD 219.130, MAINTAIN THROUGHOUT CONSTRUCTION.

EROSION AND SEDIMENT CONTROL

- PRIOR TO CONSTRUCTION OR STRIPPING TOPSOIL, THE CONTRACTOR SHALL MAKE PROVISIONS TO PROVIDE "GOOD HOUSINGKEEPING" MEASURES TO MITIGATE THE TRANSPORTATION OF SILT FROM THE SITE. THESE MEASURES SHALL INCLUDE, BUT ARE NOT LIMITED TO THE FOLLOWING:
1. PROVIDE SILT FENCES AROUND THE PERIMETER OF THE SITE TO REDUCE SILT FROM LEAVING THE SITE.
 2. PROVIDE SILT TRAPS AT CATCHBASINS UPON THEIR INSTALLATION TO REDUCE THE AMOUNT OF SILT ENTERING THE SEWER SYSTEM DURING CONSTRUCTION.
 3. USE OF "MUD MAT" OR TEMPORARY TRACKING CONTROL AT THE ENTRANCE OF THE SITE TO MINIMIZE MUD TRACKING FROM THE SITE. (OWNER SHALL CLEAN ADJACENT ROADS ON A REGULAR BASIS)
 4. PROVIDE ROCK CHECK DAMS WITH FILTER CLOTH IN ANY TEMPORARY DRAINAGE SWALES DURING CONSTRUCTION.
 5. STABILIZE SITE AS SOON AS POSSIBLE BY RE-ESTABLISHING VEGETATIVE GROUND COVER AND AVOIDING BARE SOIL AREAS. ALL AREAS (INCLUDING STOCKPILES) WHERE SITE IMPROVEMENTS ARE NOT EXPECTED TO OCCUR IMMEDIATELY SHALL BE REVEGETATED WITH 100mm TOPSOIL AND HYDROSEEDING IN ACCORDANCE WITH OPSD 570 & 572.
 6. ALL DRAINAGE WORKS REQUIRE EROSION/SEDIMENT CONTROL SATISFACTORY TO THE APPROVAL AGENCIES DURING CONSTRUCTION PERIOD AND MUST BE MONITORED AND MAINTAINED ON A REGULAR BASIS TO ENSURE MAXIMUM BENEFIT AND MINIMUM SILT MIGRATION OFF-SITE.

ESC PHASE 1 NOTES:

1. EROSION AND SEDIMENT CONTROL MEASURES TO BE INSTALLED PRIOR TO TOPSOIL STRIPPING.
2. INSPECTION WITH THE CITY STAFF IS TO BE COMPLETED ONCE ESC MEASURES ARE INSTALLED.
3. WEEKLY INSPECTIONS OF ESC MEASURES AND AFTER RAINFALL EVENTS IS REQUIRED WITH REPORTING.
4. REGULAR MAINTENANCE TO REMOVE ACCUMULATED SEDIMENT AND REPAIR ESC MEASURES IS REQUIRED.
5. ESC MEASURES TO REMAIN UNTIL PRE-GRADING AND SERVICES ARE COMPLETE. REFER TO EROSION AND SEDIMENT CONTROL PLAN (STAGE 2) MEASURES.



LEGEND

	EXISTING CONTOURS
	EXISTING ELEVATIONS
	EXISTING STORM MANHOLE
	EXISTING SANITARY MANHOLE
	PROPERTY LINE
	CONSTRUCTION ENTRANCE
	LAYFIELD SEDIMENT TRAP
	PROPOSE SILT FENCE

LEGAL & TOPOGRAPHY
 PROVIDED BY: J.D. BARNES LIMITED
 257 WOODLAWN ROAD WEST, UNIT 101
 GUELPH, ON N1H 8J1
 PHONE: (519) 822-4031

BENCHMARK AND ELEVATION
 ELEVATIONS SHOWN HEREON ARE GEODETIC (CGVD28-1978) AND ARE DERIVED FROM GNSS OBSERVATIONS USING NATURAL RESOURCES CANADA'S GEOD MODEL HTV2.0
 BEARINGS ARE UTM GRID, DERIVED FROM OBSERVED REFERENCE POINTS A AND B, BY REAL TIME NETWORK (RTN) OBSERVATIONS, UTM ZONE 17, NAD83 (CSRS) (2010.0).

No.	ISSUED FOR REZONING #1 (30%)	DATE	BY	CITY
1	ISSUED FOR REZONING #1 (30%)	20/11/2024		

counterpoint ENGINEERING
 A SUBSIDIARY OF DILLON CONSULTING LIMITED
 8385 Jane St., Suite 100, Vaughan, ON L4R 5Y2 Phone 905.326.1404 Fax 905.326.1405

ENGINEER'S STAMP
 LICENSED PROFESSIONAL ENGINEER
 J. S. YOGANATHAN
 100100545
 NOV 20/24
 PROVINCE OF ONTARIO

APPLICANT:
HOME OPPORTUNITIES
 478 QUEEN STREET EAST, SUITE 201
 TORONTO, ON M5A 1T7
 PHONE: (416) 504-9855

SITE LOCATION:
 280 CLAIR ROAD WEST
 GUELPH, ON N1L 1G1

SITE PLAN FILE No.:

EROSION AND SEDIMENT CONTROL PLAN (STAGE 1)

DESIGNED BY: J.Y.	CHECKED BY: J.H.	DATE: SEPTEMBER, 2024
DRAWING BY: G.D.	CHECKED BY: J.H.	PROJECT NO. 24010
SWM BY: J.H.	CHECKED BY: J.H.	DRAWING NO. SW-ESC1
SCALE: 0m 25m 50m 75m		
1:500m		