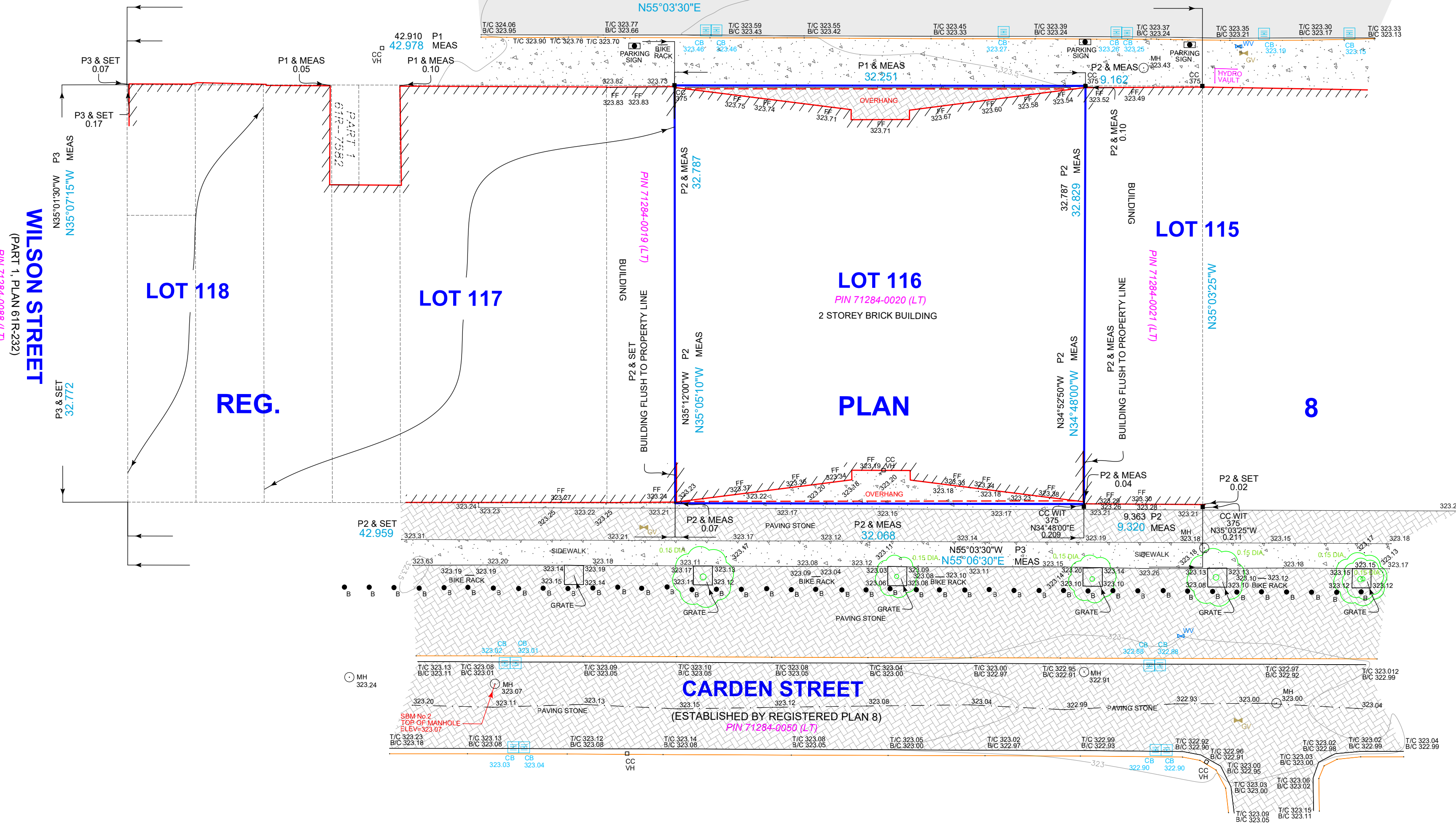


**TOPOGRAPHIC SURVEY OF
LOT 116
REGISTERED PLAN 8
CITY OF GUELPH
COUNTY OF WELLINGTON**

SCALE 1 : 250
0 2.5 5 10 15 meters
VAN HARTEN SURVEYING INC.



BEARING AND COORDINATE NOTE:

- BEARINGS ARE GRID BEARINGS AND ARE DERIVED FROM GPS OBSERVATIONS AND ARE REFERRED TO THE UTM PROJECTION, ZONE 17, NAD 83 (CSRS-2010) ADJUSTMENT.
- DISTANCES SHOWN ON THIS PLAN ARE ADJUSTED GROUND DISTANCES AND CAN BE CONVERTED TO GRID DISTANCES BY MULTIPLYING BY AN AVERAGED COMBINED SCALE FACTOR OF 0.99960041.
- COORDINATES ON THIS PLAN ARE UTM, ZONE 17, NAD83 (CSRS-2010) ADJUSTMENT AND ARE BASED ON GPS OBSERVATIONS FROM A NETWORK OF PERMANENT GPS REFERENCE STATIONS.

SURVEY INFORMATION:

BENCHMARK REFERENCE:
ELEVATIONS ARE BASED ON GPS OBSERVATIONS FROM PERMANENT REFERENCE STATIONS IN THE NAD83 (CSRS-2010) COORDINATE SYSTEM, WITH HEIGHTS CONVERTED TO ORTHOMETRIC ELEVATIONS ON THE CVGD28 DATUM (1978 ADJUSTMENT) WITH GEOID MODEL HTV2.0, AS SUPPLIED BY NATURAL RESOURCES CANADA.

SITE BENCHMARK:

- TOP OF MANHOLE ON McDONNELL STREET - ELEVATION 323.71m
- TOP OF MANHOLE ON CARDEN STREET - ELEVATION 323.07m

BEARING COMPARISONS:

FOR THE PURPOSES OF BEARING COMPARISONS, PREVIOUS SURVEYS HAVE BEEN ROTATED TO UTM BEARINGS BY THE ANGLES SHOWN BELOW.

PLAN	ROTATION FOR NORTHEAST BEARINGS
P1,P2,P3	-0°46'30"

METRIC:

DISTANCES SHOWN ON THIS PLAN ARE IN METRES AND CAN BE CONVERTED TO FEET BY DIVIDING BY 0.3048.

LEGEND:

- DENOTES SURVEY MONUMENT SET
- DENOTES SURVEY MONUMENT FOUND
- CC DENOTES CUT CROSS
- WIT DENOTES WITNESS
- VH DENOTES VAN HARTEN SURVEYING INC., O.L.S.'s
- 375 DENOTES BLACK SHOEMAKER ROBINSON & DONALDSON LIMITED, O.L.S.'s
- P1 DENOTES DEPOSITED PLAN 61R-7582
- P2 DENOTES BLS BY 375 DATED MARCH 9, 1988 FILE No. 88-5276
- P3 DENOTES BLS BY VH DATED MARCH 13, 1987 FILE No. 87-7975
- FF DENOTES FINISHED FLOOR
- T/C / B/C DENOTES TOP OF CURB/BOTTOM OF CURB

LINETYPES

- DECK
- CENTRELINE OF ROAD

SYMBOLS

- EXISTING ELEVATION ×206.55
- WATER VALVE
- GAS VALVE
- GAS VALVE
- MANHOLE
- CATCHBASIN
- CONCRETE
- BUILDING
- ASPHALT
- PAVING STONE
- DECIDUOUS TREE

SURVEYOR'S CERTIFICATE

- I CERTIFY THAT:
- THIS SURVEY AND PLAN ARE CORRECT AND IN ACCORDANCE WITH THE SURVEYS ACT, THE SURVEYS ACT, THE LAND TITLES ACT AND THE REGULATIONS MADE UNDER THEM.
 - THIS SURVEY WAS COMPLETED ON THE 10TH OF JULY 2021

DATE: AUGUST 12, 2021

JAMIE LAWS
ONTARIO LAND SURVEYOR

REVISION SCHEDULE

No.	DATE	BY	COMMENTS
1	8/12/2021	TS	FIRST SUBMISSION

Van Harten
SURVEYING INC.
LAND SURVEYORS and ENGINEERS

Kitchener/Waterloo Ph: 519-742-8371 Guelph Ph: 519-821-2763 Orangeville Ph: 519-940-4110

www.vanharten.com info@vanharten.com

DRAWN BY: TS CHECKED BY: JML PROJECT No. 30048-21

Aug 12, 2021-1:59:10 PM
G:\GUELPH\116\MS\LOT 116 (Carden)
UTM-2010.dwg