

Notes

- BENCHMARK: ND-27 RWK3/6.3 GUELPH BENCHMARK #392, BENCHMARK PLATE ON TRAFFIC CONTROL BOX LOCATED ON SOUTH WEST CORNER OF THE INTERSECTION OF ARKELL ROAD AND VICTORIA ROAD. ELEVATION: 336.245M
- TOPOGRAPHICAL SURVEY BY STANTEC CONSULTING LTD. DATED: JULY 2017.
- LEGAL PLAN PROVIDED BY BLACK, SHOENAKER, ROBINSON & DONALDSON LIMITED. DATED MARCH 2019.
- DRAFT PLAN BY J.D. BARNES LIMITED DECEMBER 2023.

Legend

1. RESPONSE TO 2ND SUBMISSION COMMENTS	MALM	KRB	23.12.20
0. SECOND SUBMISSION	MALM	KRB	23.03.03
Revision			By Appd. YY.MM.DD
File Name: 161413338_C-SWM.dwg			23.12.19
Dwn.	Chkd.	Dign.	YY.MM.DD

Permit-Seal

Professional Engineers Ontario
Licensed Engineering Technologist
Name: J. R. K. BROUSSEAU
Number: 19022/228
Limitations: Preparation of municipal servicing design and specifications for gravity sanitary sewer, storm sewer, watermain layout, site grading, development erosion control and development of local roads.
Association of Professional Engineers of Ontario

PRELIMINARY NOT FOR CONSTRUCTION
Not for permits, pricing or other official purposes. This document has not been completed or checked and is for general information or comment only.

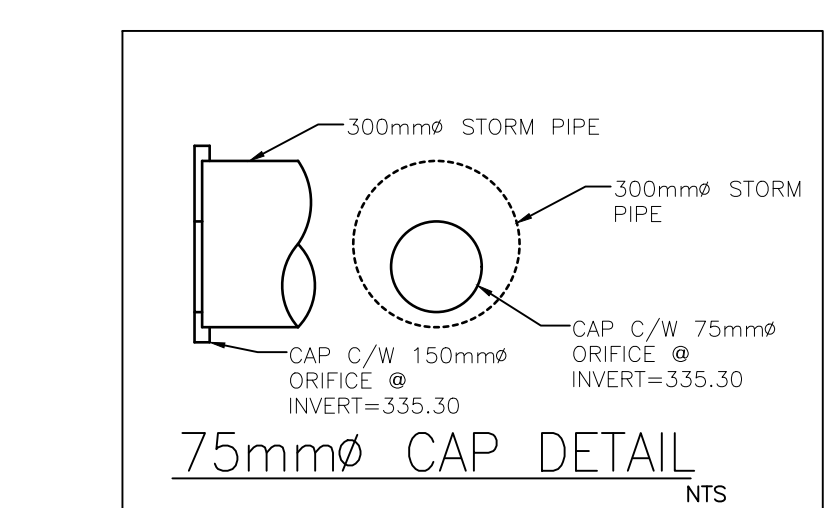
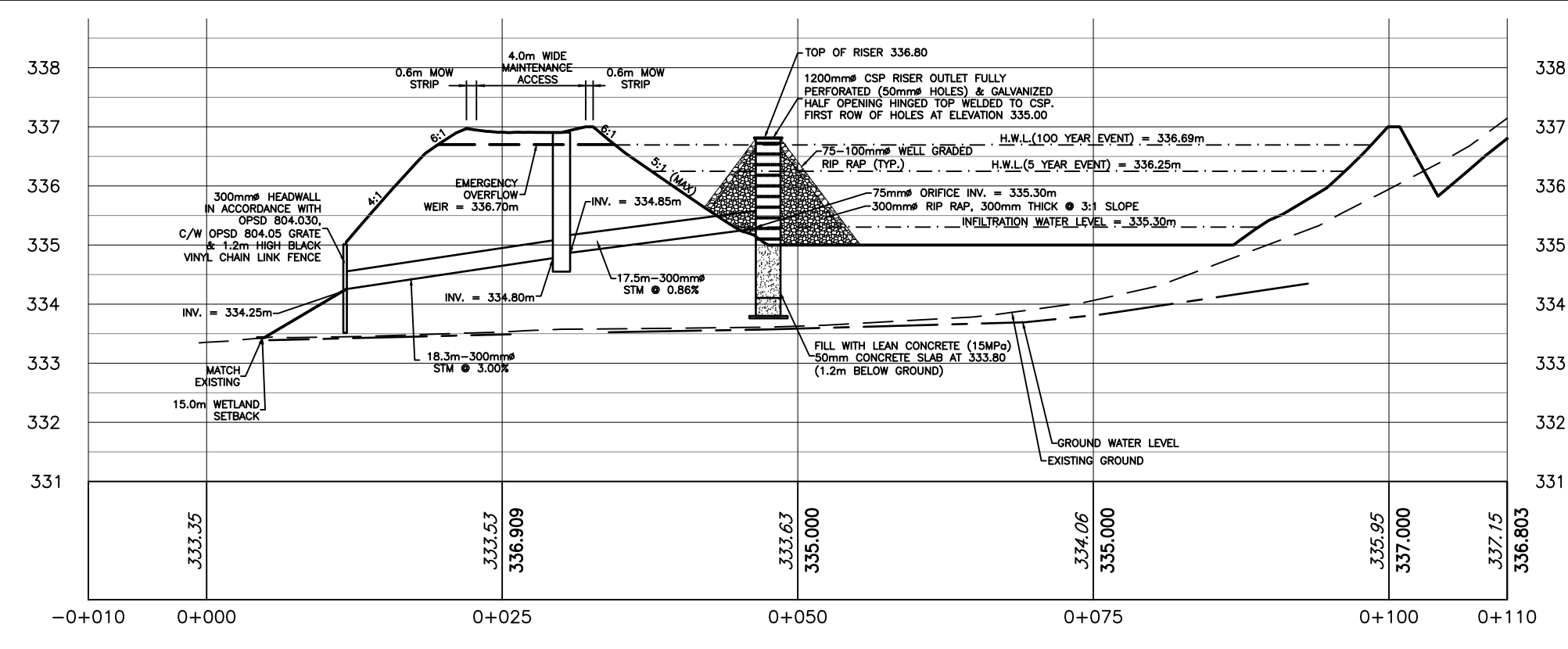
Client/Project
ROCKPOINT PROPERTIES INC.

220 ARKELL ROAD

Guelph, ON

Title
CONCEPTUAL STORMWATER MANAGEMENT PLAN

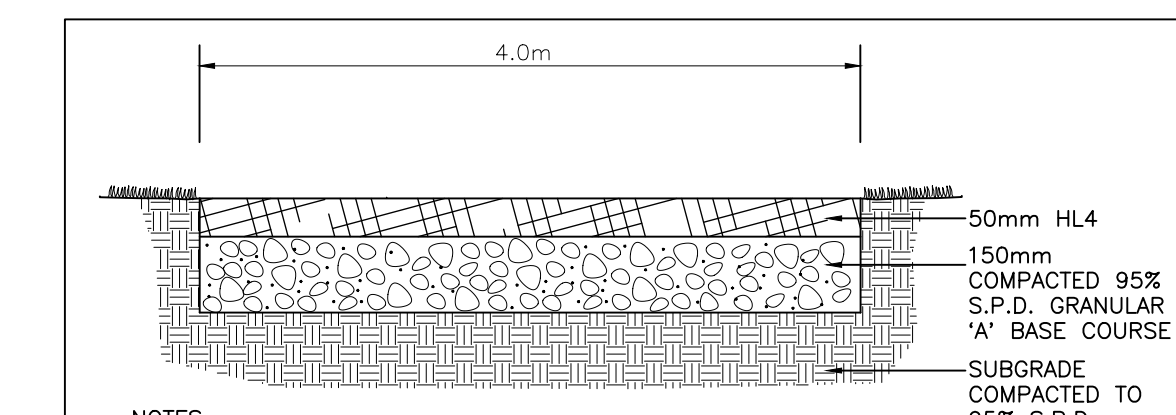
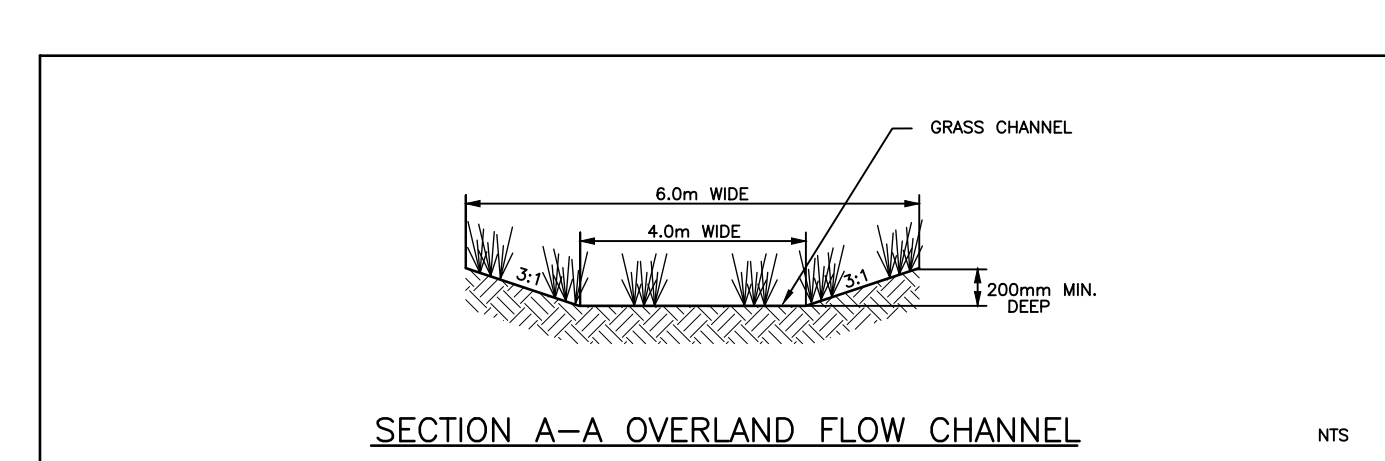
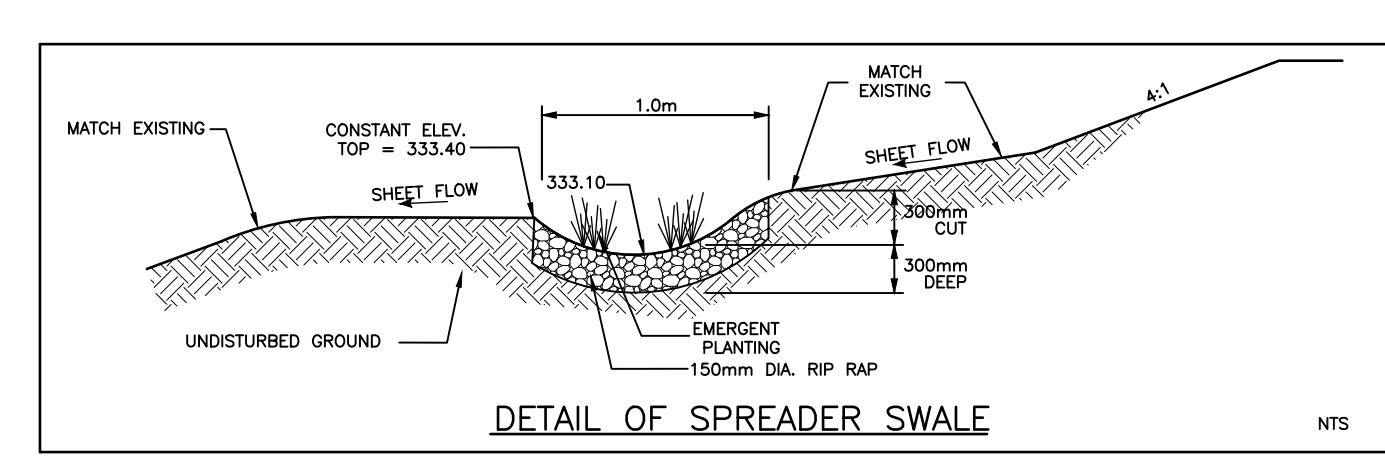
Project No.	Scale	0	2.5	7.5	12.5m
161413338	1:250				
Drawing No.	Sheet	Revision			
C-410		1			



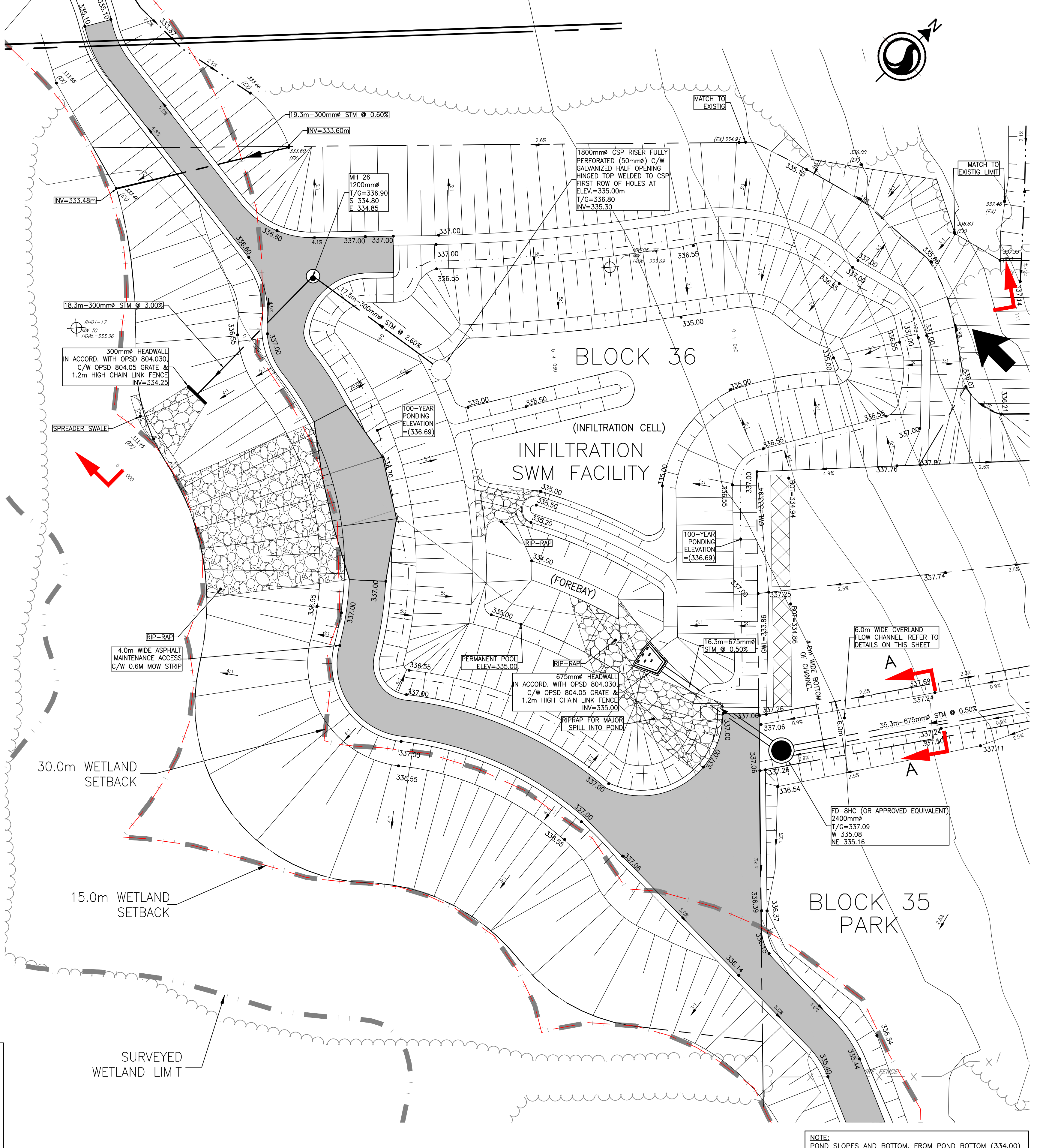
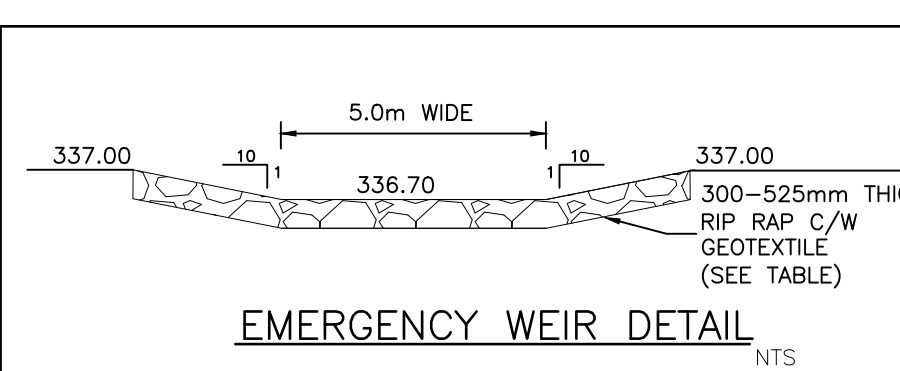
RIP-RAP GRADATION TABLE
100mm RIP-RAP 175mm THICK (MTO)
100% SMALLER THAN 150mm
AT LEAST 20% LARGER THAN 120mm
AT LEAST 50% LARGER THAN 100mm
AT LEAST 80% LARGER THAN 60mm

RIP-RAP GRADATION TABLE
300mm RIP-RAP 525mm THICK (MTO)
100% SMALLER THAN 500mm
AT LEAST 20% LARGER THAN 350mm
AT LEAST 50% LARGER THAN 300mm
AT LEAST 80% LARGER THAN 200mm

RIP-RAP DETAIL
NTS



- NOTES:
- COMPACT ASPHALT TO 97% MARSHALL MIX DESIGN BULK DENSITY.
 - TRAIL TO MATCH PROPOSED GRADES.
 - TRAIL SURFACE TO BE SMOOTH AND EVEN THROUGHOUT.
 - ALL DIMENSIONS ARE IN MILLIMETERS UNLESS OTHERWISE NOTED.
 - DISTURBED AREAS ARE TO BE RESTORED C/W TOPSOIL AND SEED (TOWN AND COUNTRY PICKSEED). TOPSOIL IS TO BE FINE GRADED AND BOX SCRAPPED WITH ALL AREAS HAVING POSITIVE DRAINAGE.
- ASPHALT MAINTENANCE ACCESS/WALKWAY DETAIL**
NTS



NOTE:
POND SLOPES AND BOTTOM, FROM POND BOTTOM (334.00) TO 0.5m ABOVE PERMANENT POOL (335.00) TO ELEVATION 335.50 WITHIN THE FOREBAY LINED WITH 0.45m THICK ANTI SEEPAGE LINER. FINAL THICKNESS CONFIRMED FOLLOWING SOURCING AND TESTING OF MATERIAL BY GEOTECHNICAL CONSULTANT. ANY LOCALIZED SAND LAYERS CONTACTED ABOVE THE PERMANENT POOL WERE ALSO TO BE LINED.