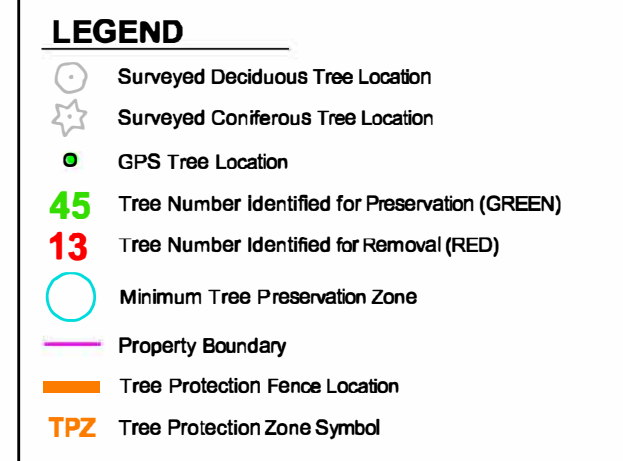
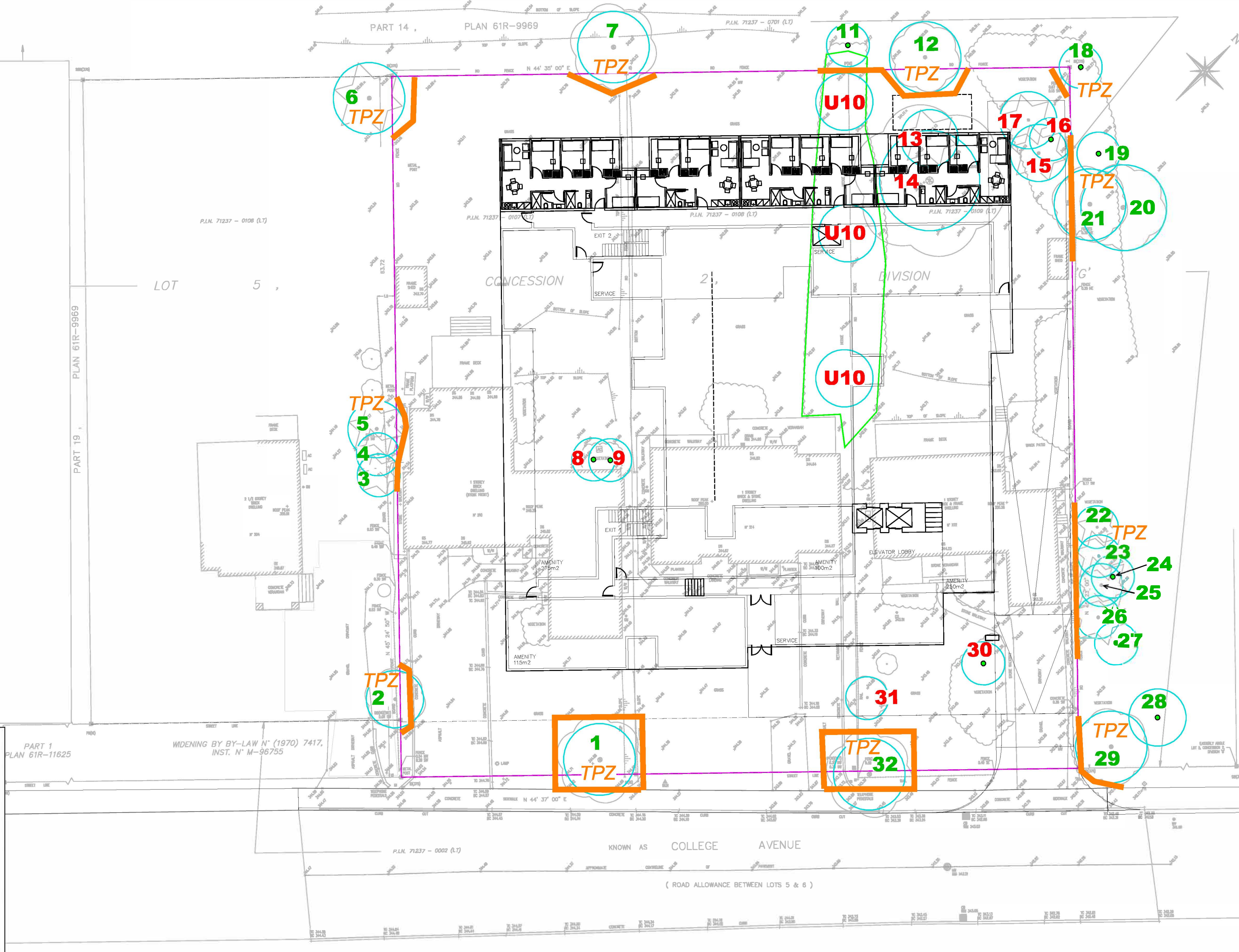
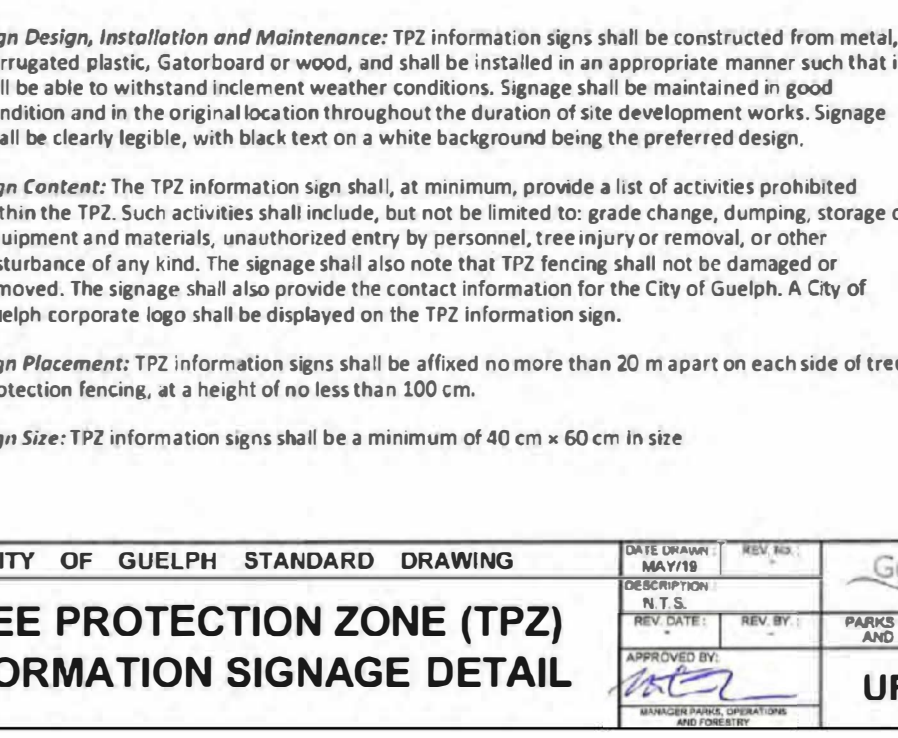
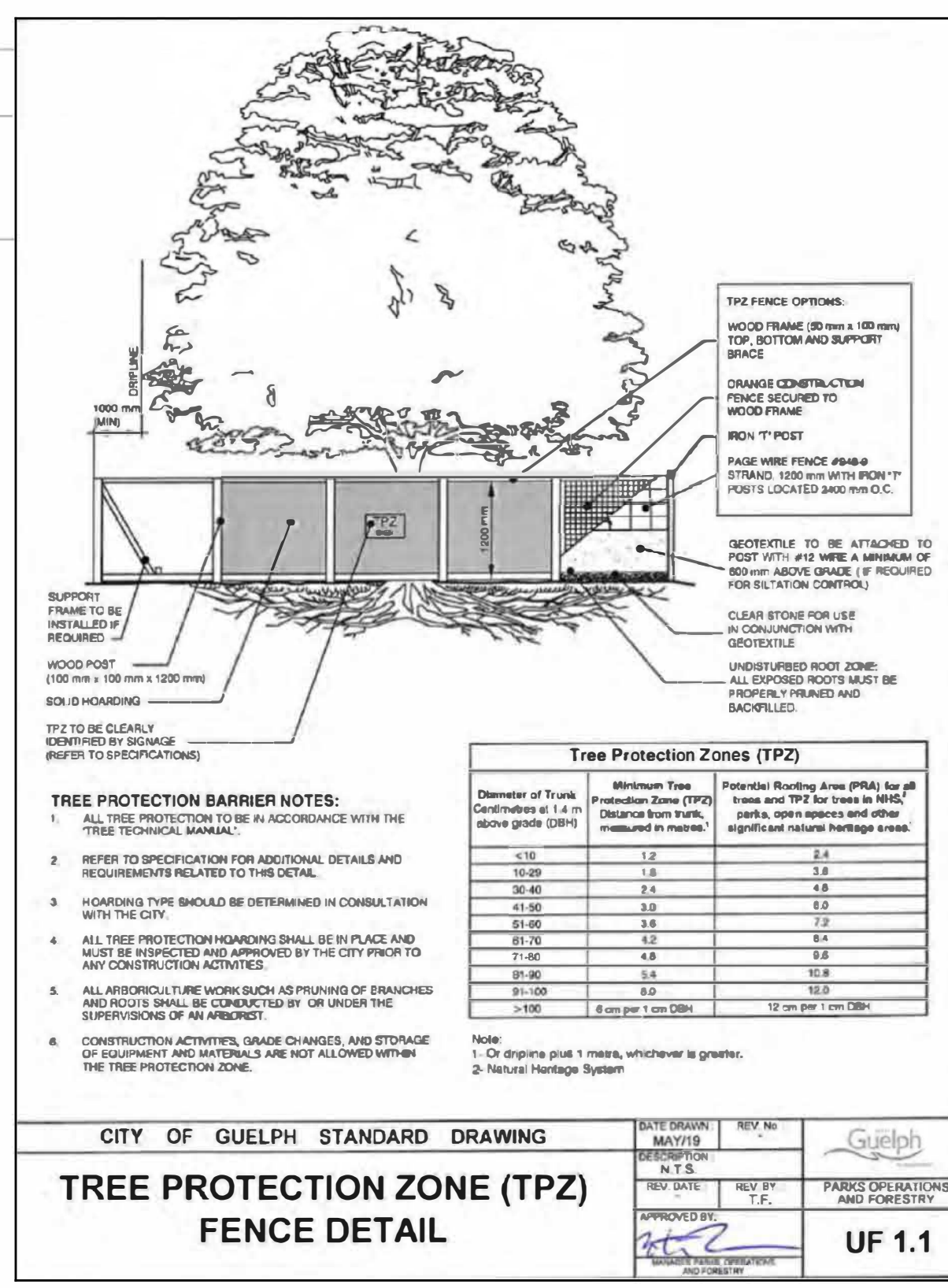


**Table 1. Tree Inventory**  
Location: 210-222 College Ave E, Guelph Date: 24 Nov 2025 Surveyors: JJ

Tree #	Common Name	Scientific Name	DBH	TI	CS	CV	DL	mTPZ	Location	Comments	Action
1	Noway Maple	<i>Acer platanoides</i>	42	G	G	G	4	3.0	Subject Property	Minor damage at time of survey due to branch attachments	Preserve
2	Northern Sycamore	<i>Carya spicocarpa</i>	36	G	FG	FG	3	2.4	Neighbouring	Witches broom	Preserve
3	Balsam Fir	<i>Abies balsamea</i>	21	G	G	G	2	1.8	Neighbouring		Preserve
4	European Larch	<i>Larix laricina</i>	27	G	G	G	3.5	1.8	Neighbouring		Preserve
5	European Larch	<i>Larix laricina</i>	31	G	G	G	4	2.4	Neighbouring		Preserve
6	Blue Spruce	<i>Picea pungens</i>	41	G	G	G	3	3.0	Neighbouring		Preserve
7	Sugar Maple	<i>Acer saccharum</i>	42	G	FG	FG	5	3.0	Neighbouring	Vertical scaffold lines	Preserve
8	Emerald Cedar	<i>Thuja occidentalis</i>	10	G	G	G	1	1.8	Subject Property		Remove
9	Emerald Cedar	<i>Thuja occidentalis</i>	12, 12	G	G	G	1	1.8	Subject Property	Union at ground level	Remove
U10	Western White Cedar	<i>Thuja occidentalis</i>	4.34, 4.4, 4.17	FG	FG	FG	2	2.4	Subject Property	Union at ground level, close to hedge, trees < 1.0 m diameter	Remove
11	Kentucky Coffeetree	<i>Symlocos olivacea</i>	8	G	G	G	2	1.8	Neighbouring		Preserve
12	Kentucky Coffeetree	<i>Symlocos olivacea</i>	42	G	G	G	5	3.0	Neighbouring		Preserve
13	White Pine	<i>Pinus strobus</i>	31	G	G	G	4	2.4	Subject Property		Remove
14	White Pine	<i>Pinus strobus</i>	65	G	G	G	10	4.2	Subject Property	Light lean south	Remove
15	Blue Spruce	<i>Picea pungens</i>	36	G	G	G	4	2.4	Subject Property		Remove
16	Blue Spruce	<i>Picea pungens</i>	28	G	G	G	4	1.8	Subject Property		Remove
17	Blue Spruce	<i>Picea pungens</i>	31	G	G	G	3	2.4	Subject Property		Remove
18	Hawthorn species	<i>Crataegus</i> spp.	17, 11	F	FG	FG	3	1.8	Neighbouring	Union at ground level with stem within grapevine competition	Preserve
19	Black Walnut	<i>Juglans nigra</i>	18	G	G	G	4	1.8	Neighbouring		Preserve
20	Black Walnut	<i>Juglans nigra</i>	52	FG	FG	FG	7	3.6	Neighbouring	Seam	Preserve
21	Black Walnut	<i>Juglans nigra</i>	41	FG	G	G	4	3.0	Neighbouring		Preserve
22	White Spruce	<i>Picea glauca</i>	16	G	G	FG	3	1.8	Neighbouring		Preserve
23	Blue Spruce	<i>Picea pungens</i>	24	G	G	G	3	1.8	Neighbouring		Preserve
24	Black Walnut	<i>Juglans nigra</i>	13	G	FG	G	3	1.8	Neighbouring		Preserve
25	Blue Spruce	<i>Picea pungens</i>	27	G	G	G	3	1.8	Neighbouring		Preserve
26	Blue Spruce	<i>Picea pungens</i>	28	G	G	G	3	1.8	Neighbouring		Preserve
27	Apple species	<i>Malus</i> spp.	25	F	F	FG	3	1.8	Neighbouring	Stem within flare - row of rabbit damage	Preserve
28	Black Walnut	<i>Juglans nigra</i>	34	G	G	G	6	2.4	Neighbouring		Preserve
29	Black Walnut	<i>Juglans nigra</i>	41	G	G	G	6	3.0	Neighbouring		Preserve
30	Eastern Flowering Dogwood (planted)	<i>Cornus florida</i>	7	G	G	G	2.5	1.8	Subject Property	Lean: cape planting in garden bed	Remove
31	Scots Pine	<i>Pinus sylvestris</i>	20	G	G	G	3	1.8	Subject Property		Remove
32	Noway Maple	<i>Acer platanoides</i>	41	G	G	G	5	3.0	Municipal RCW		Preserve

DBH	Diameter at Breast Height (cm)
TI	Trunk Integrity (G, F, P)
CS	Crown Structure (G, F, P)
CV	Crown Vigor (G, F, P)
DL	Decline (Y, N)
mTPZ	Minimum Tree Preservation Zone (m)
G	Good
F	Fair
P	Poor
-	Estimate



**Tree Preservation Recommendations**  
The following recommendations are made in attempts to reduce the impacts to trees identified for preservation:

- Tree protection fence must be installed at the mTPZ distance as outlined in this report and on Sheet 1, prior to the commencement of demolition, unless noted otherwise in this report and on Sheet 1.
- Once tree protection fence has been installed it must not be moved, relocated or altered in any way (unless repairing fallen fence etc.) for the duration of the construction period.
- No intrusion into an area identified on Sheet 1 as a tree preservation zone (TPZ) is allowed at anytime during construction, unless noted otherwise in this report and on Sheet 1.
- No storage of machinery, construction debris, materials, waste or any other items is allowed within a TPZ.
- Any tree branches or roots that conflict with proposed development must be pruned by a Certified Arborist in accordance with good arboricultural practices.
- Tree protection fencing should be inspected by a Certified Arborist prior to and during construction to ensure that the fencing remains intact and in good repair throughout the stages of development.

No.	Date	Description	By
1	11 Dec 2025	Issued for Review	JJ

Data Source:		JACKSON ARBORICULTURE INC. CONSULTING AND ANALYSIS	138 Pleasant Street, Guelph, ON N1H 2Y6 519-837-4265 jackson@jacksonarb.com
210-222 College Ave. E.		Guelph, ON	
SHIFT Landscape Architecture 100 Crimea Street, Unit C7-C8 Guelph, ON N1H 2Y6			
Tree Preservation Plan			
Project #	P614	Sheet #	2
Date	11 December 2025		
Scale	1:250 @ 24x36		