

LEGEND:

- DECIDUOUS TREE (Green circle with leaf pattern)
- CONIFEROUS TREE (Green circle with needle pattern)
- EXISTING ELEVATION (Elevation value)
- EXISTING CONTOUR (Dashed line)
- PROPOSED ELEVATION (Elevation value)
- PROPOSED TOP OF WALL (Elevation value)
- PROPERTY BOUNDARY (Dashed line)
- BELL PEDESTAL (Square symbol)
- TV PEDESTAL (Square symbol)
- FIRE HYDRANT (Circle with cross symbol)
- TRANSFORMER PAD (Square symbol)
- SANITARY SEWER (Dashed line)
- WATERMAIN (Dashed line)
- STORM SEWER (Dashed line)
- FENCELINE (Dashed line)
- TOP OF BANK (Dashed line)
- E/ONE SEWAGE EJECTOR (Circle with cross symbol)
- RETAINING WALL (Hatched area)
- DITCH INLET CATCHBASIN (Square symbol)
- CATCHBASIN (Square symbol)
- MANHOLE (Circle symbol)
- STREET LIGHT (Circle with cross symbol)

THE POSITION OF POLES, LINES, CONDUITS, WATERMAINS, SEWERS AND OTHER UNDERGROUND UTILITIES AND STRUCTURES IS NOT NECESSARILY SHOWN ON THE CONTRACT DRAWINGS, AND WHERE SHOWN, THE ACCURACY OF THE POSITION OF SUCH UTILITIES AND STRUCTURES IS NOT GUARANTEED. BEFORE STARTING WORK, THE CONTRACTOR SHALL INFORM HIMSELF OF THE EXACT LOCATION OF ALL SUCH UTILITIES AND STRUCTURES, AND SHALL ASSUME ALL LIABILITY FOR DAMAGE TO THEM.

No.	DATE	DESCRIPTION	BY:	CHKD.
2	AUG. 17/2020	REVISED CONCEPT	GS	WV
1	MAY 28/2020	CHANGE LOTS, ADD 10m EASEMENT PLAN CLEANUP	GS	---

ISSUES/REVISIONS
PROJECT No. 21203-13

Van Harten
SURVEYING INC.
LAND SURVEYORS and ENGINEERS

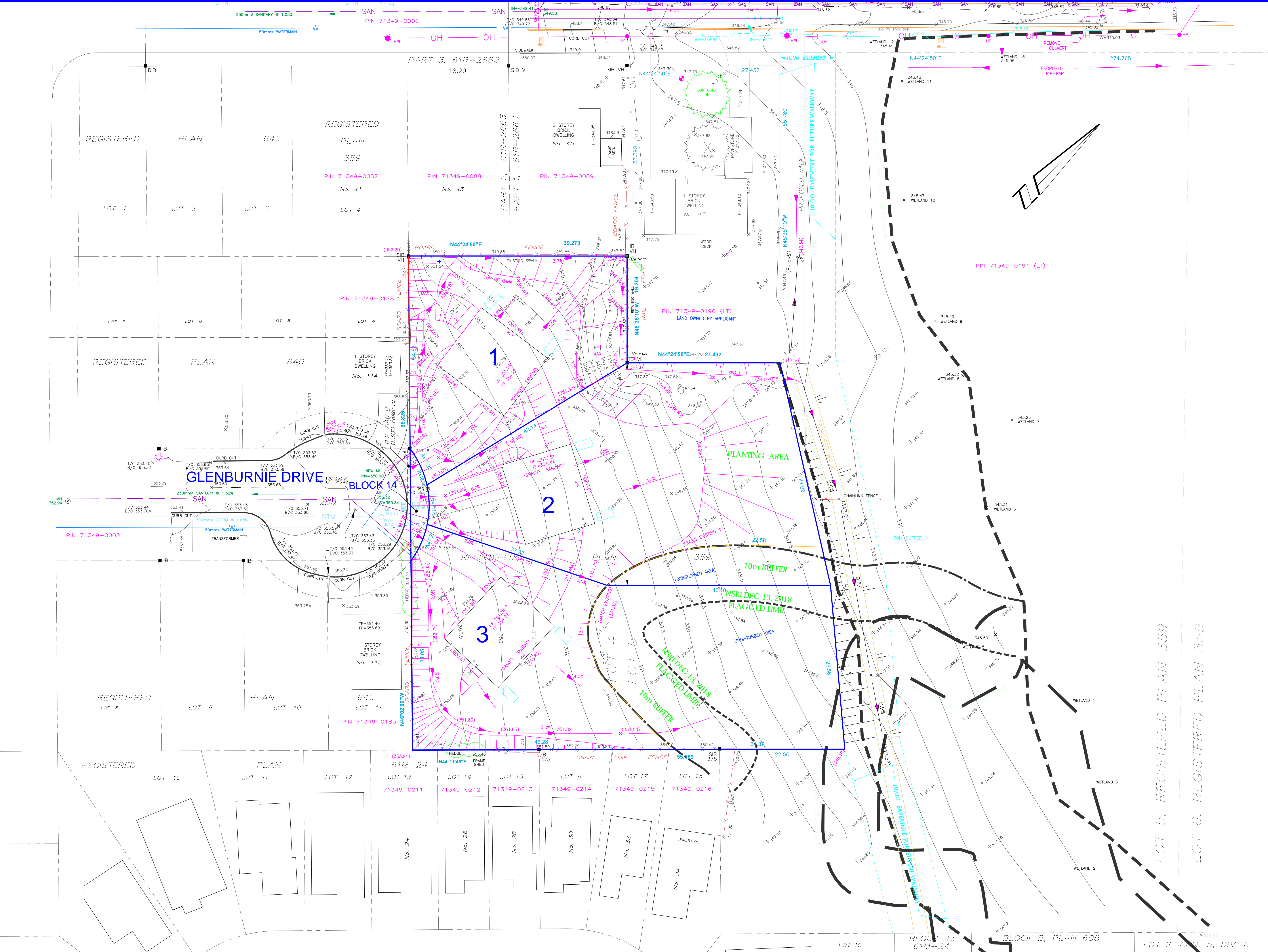
423 WOOLWICH STREET GUELPH - ONTARIO, N1H 3X3
PHONE: (519) 821 - 2763
FAX: 821 - 2770
www.vanharten.com

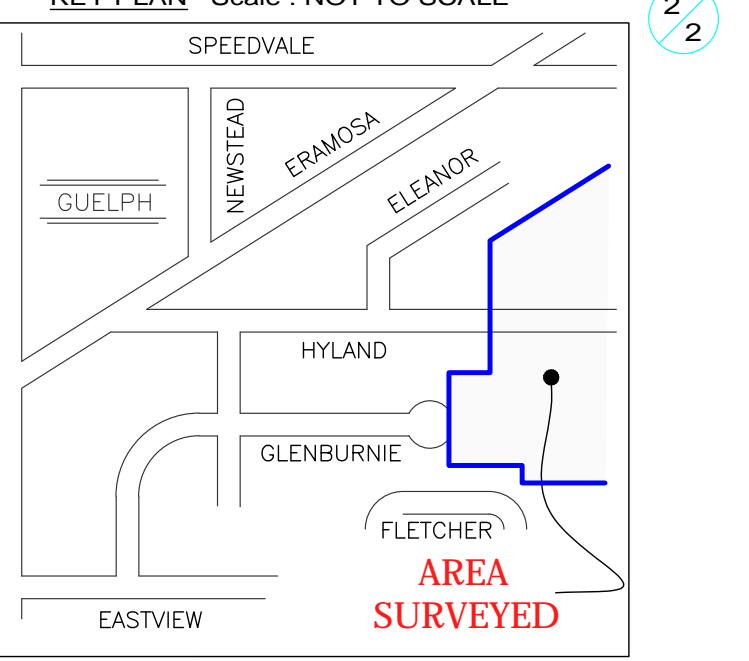
660 RIDDELL ROAD, UNIT 1 ORANGEVILLE - ONTARIO, L9W 5G5
PHONE: (519) 940 - 4110
FAX: 519 - 940 - 4113
www.vanharten.com

ENGINEERING SERVICES
GLENBURNIE DRIVE EXTENSION
CITY OF GUELPH
COUNTY OF WELLINGTON

GRADING & SERVICING PLAN

SCALE:	1:300	CONSULTANT DRAWING No.	1 OF 2
DATE DRAWN:	SEPTEMBER 5, 2020	CITY CONTRACT No.	---
DRAWN BY:	DESIGN BY:	CHKD BY:	CITY REFERENCE No.
GS	C.O.	---	REV. 4





LEGEND:

- DECIDUOUS TREE (Green circle with dot)
- CONIFEROUS TREE (Green circle with star)
- EXISTING ELEVATION (Grey line)
- EXISTING CONTOUR (Grey line with '32a')
- PROPOSED ELEVATION (Pink line with '+ (350.20)')
- PROPOSED TOP OF WALL (Pink line with '+ (350.00)T/W')
- PROPERTY BOUNDARY (Blue dashed line)
- BELL PEDESTAL (Yellow square with 'BELL')
- TV PEDESTAL (Yellow square with 'CATV')
- FIRE HYDRANT (Blue circle with 'FH')
- TRANSFORMER PAD (Yellow square with 'T')
- SANITARY SEWER (Blue dashed line with 'S')
- WATERMAIN (Blue dashed line with 'W')
- STORM SEWER (Blue dashed line with 'SS')
- FENCELINE (Red dashed line)
- TOP OF BANK (Black line with 'TOB')
- SOAKAWAY PIT (Blue rectangle)
- E/ONE SEWAGE EJECTOR (Pink circle with 'EONE')
- RETAINING WALL (Pink rectangle)
- DITCH INLET CATCHBASIN (Blue square with 'DICB')
- CATCHBASIN (Blue square with 'CB')
- MANHOLE (Blue circle with 'MH')
- STREET LIGHT (Yellow circle with 'SL')

THE POSITION OF POLES, LINES, CONDUITS, WATERMAINS, SEWERS AND OTHER UNDERGROUND UTILITIES AND STRUCTURES IS NOT NECESSARILY SHOWN ON THE CONTRACT DRAWINGS, AND WHERE SHOWN, THE ACCURACY OF THE POSITION OF SUCH UTILITIES AND STRUCTURES IS NOT GUARANTEED. BEFORE STARTING WORK, THE CONTRACTOR SHALL INFORM HIMSELF OF THE EXACT LOCATION OF ALL SUCH UTILITIES AND STRUCTURES, AND SHALL ASSUME ALL LIABILITY FOR DAMAGE TO THEM.

No.	DATE	DESCRIPTION	BY:	CHKD.
2	AUG. 17/2020	REVISED CONCEPT	GS	WV
1	MAY 28/2020	CHANGE LOTS, ADD 10m EASEMENT PLAN CLEANUP, GENERAL EDITS	GS	---

ISSUES/REVISIONS

PROJECT No. 21203-13

Van Harten
SURVEYING INC.
LAND SURVEYORS AND ENGINEERS

423 WOOLWICH STREET GUELPH - ONTARIO, N1H 3X3
PHONE: (519) 821 - 2763
FAX: 821 - 2770
www.vanharten.com

660 RIDDELL ROAD, UNIT 1 ORANGEVILLE - ONTARIO, L9W 5G5
PHONE: (519) 940 - 4110
FAX: 519 - 940 - 4113
www.vanharten.com

ENGINEERING SERVICES
HYLAND ROAD EXTENSION
CITY OF GUELPH
COUNTY OF WELLINGTON

GRADING & SERVICING PLAN

SCALE:	1:300	CONSULTANT DRAWING No.	2 OF 2
DATE DRAWN:	SEPTEMBER 5, 2020	CITY CONTRACT No.	---
DRAWN BY:	GS	DESIGN BY:	C.O.
CHK'D BY:	---	CITY REFERENCE No.	---
REV.	---	---	4

