

DRAFT PLAN OF SUBDIVISION

Legal Description
PART OF LOT 6, CONCESSION 8, GEOGRAPHICAL TOWNSHIP OF PUSLINCH, CITY OF GUELPH

Owner's Certificate
I HEREBY AUTHORIZE MACNAUGHTON HERMSEN BRITTON CLARKSON PLANNING LIMITED TO SUBMIT THIS PLAN FOR APPROVAL.

Surveyor's Certificate
I HEREBY CERTIFY THAT THE BOUNDARIES OF THE LAND TO BE SUBDIVIDED ON THIS PLAN AND THEIR RELATIONSHIP TO THE ADJACENT LANDS ARE ACCURATELY AND CORRECTLY SHOWN.

Key Plan
Includes a map showing the location of the subject lands within a street grid, a legend for 'Subject Lands', a north arrow, and a scale of 1:2500.

Additional Information Required Under Section 51(17) of the Planning Act R.S.O. 1990, c.P.13 as Amended

- A. AS SHOWN B. AS SHOWN C. AS SHOWN
D. MULTIPLE RESIDENTIAL, OPEN SPACE
E. AS SHOWN F. AS SHOWN G. AS SHOWN
H. MUNICIPAL WATER SUPPLY I. LOAM J. AS SHOWN
K. ALL SERVICES AS REQUIRED L. AS SHOWN

Area Schedule 61T

Table with columns: Description, Lots/Blocks, Units, Area (ha). Total: 10 lots, 91 units, 2.577 ha.

- Notes
1. All dimensions are in metres unless otherwise shown.
2. Drip-line Limits - Natural Resource Solutions Inc. (NRSI) June, 2016.
3. Wetland Limits - Natural Resource Solutions Inc. (NRSI) August, 2016.

Revision table with columns: Revision No., Date, Issued / Revision, By. Lists revisions from 1 to 14.

MHBC PLANNING URBAN DESIGN & LANDSCAPE ARCHITECTURE logo and contact information.

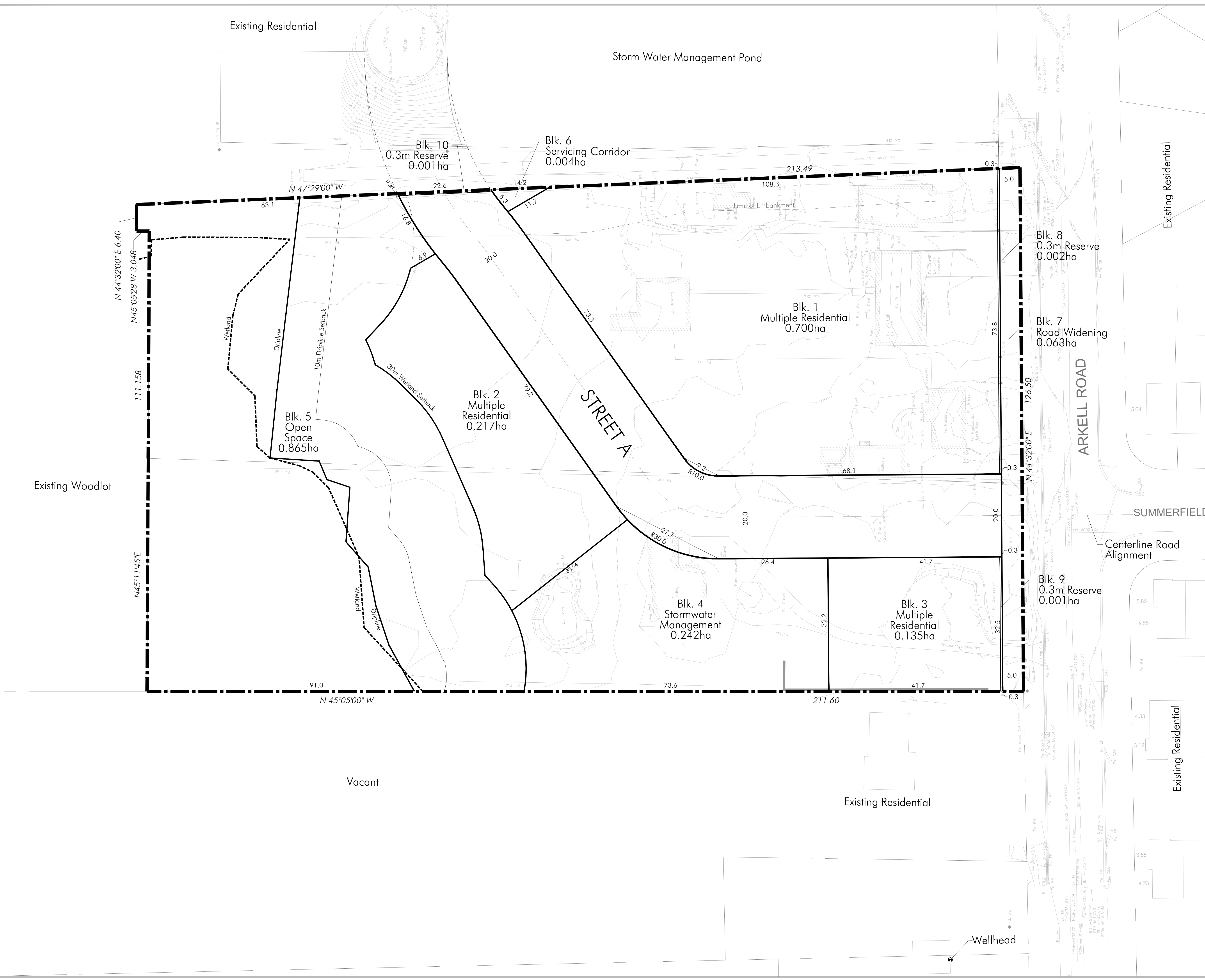
Approval Stamp table with columns: Approval Stamp, Date, File No., Plan Scale, Drawn By.

Project: Arkell Road - Guelph

Applicant: Crescent Homes, 151 Curzon Crescent, Guelph, ON. N1K 0B3, P: 647.523.6487

File Name: Draft Plan of Subdivision, Dwg No. 1 of 1

Scale Bar showing 0, 5, 10, 25m.



Legal Description, Owner's Certificate, Surveyor's Certificate, Key Plan, Additional Information Required Under Section 51(17) of the Planning Act R.S.O. 1990, c.P.13 as Amended, Area Schedule 61T, Notes, Revision table, MHBC logo and contact information, Approval Stamp, Project, Applicant, File Name, Scale Bar.