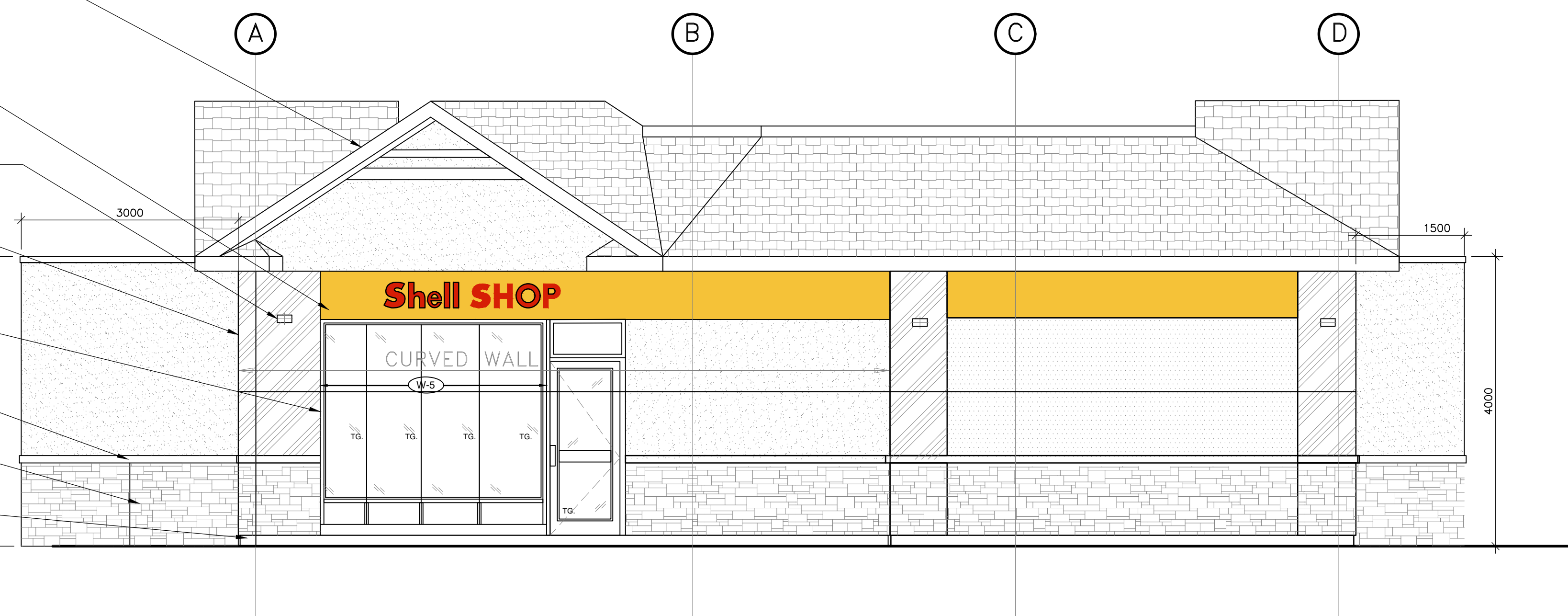






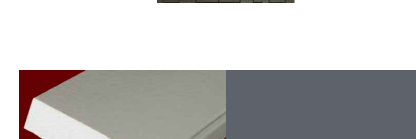

1 NORTH ELEVATION
A-203 SCALE 1:50

- GREY FOAM TRIM WITH PRE-FINISHED ALUM. COPING PTD-1
- YELLOW ALUM METAL PANELS
- EXTERIOR WALL MOUNTED LIGHTING REFER TO ELEC. DWGS TYP. (TO MATCH PHOTOMCT PLAN)
- ALUMINUM WOOD SIDING (KNOTWOOD) ALUM-1
- PRE-FINISHED BLACK ALUMINUM FRAME STOREFRONT PTD-3
- CAST STONE CAP COLOR GREY STO-1
- STONE - TBD STN-1
- CONCRETE APRON



2 SOUTH ELEVATION
A-203 SCALE 1:50

LEGEND

- STNV-1  STONE_VENEER: DUTCH QUALITY STONE WEATHER LEDGE COLOUR: ELKWOOD
- STN-1  STONE_VENEER_CAP: DUTCH QUALITY STONE WATERTABLE SILL COLOUR: GRANITE
- BRK-1  BRICK_VENEER: BRAMPTON BRICK SELECT SERIES COLOUR: SILVER
- ASH-1  ASPHALT_SHINGLES: GAF OR SIMILAR GLENWOOD SHINGLES COLOUR: WEATHERED WOOD
- STC-1  STUCCO_FOAM_BAND: FLAT BAND 250mm HT. EXTERIOR LATEX PAINTED COLOUR: ANCHOR GRAY BM 2126-30
- PTD-1  EXTERIOR_PAINTING: EXTERIOR LATEX PAINTED COLOUR: ANCHOR GRAY BM 2126-30

9				
8				
7				
6				
5				
4				
3	OCT.14.21	ISSUED FOR CLIENT REVIEW	HZ	WAM
2	MAR.08.21	ISSUED FOR CLIENT REVIEW	HZ	WAM
1	FEB.17.21	ISSUED FOR CITY PRELIMINARY REVIEW	HZ	WAM
No.	DATE	REVISIONS	INITIAL	CHECKED

GAMA Engineering Inc.
 8611 Weston Road, Suite 35B - Vaughan, Ontario - L4L 9P1
 Tel: 905-264-9295 www.gamaengineering-inc.com

STAMP
 LICENSED PROFESSIONAL ENGINEER
 W. WATSON
 OCT 14 2021
 PROVINCE OF ONTARIO

CLIENT/OWNER: **145 SPEEDVALE INC.**
 145 SPEEDVALE AVENUE WEST,
 GUELPH, ONTARIO, N1K 1K5

CITY FILE NO. SP21-007

PROJECT/ADDRESS:
C- STORE, GAS BAR & CAR WASH
 145 SPEEDVALE AVENUE WEST,
 GUELPH, ONTARIO, N1K 1K5

TITLE:
C-STORE BUILDING ELEVATION

DESIGN:	WAM	DWN BY:	HZ	DRAWING No.
SCALE:	AS NOTED	DWG. FILE:	1808-A-203	A-203
DATE:	FEB.12.21	PROJ. No.:	1808	