

- NOTES:**
1. TOPOGRAPHICAL SURVEY COMPLETED BY J.D. BARNES DEVELOPMENTS ON OCTOBER 19, 2022.
 2. EXISTING INFRASTRUCTURE INFORMATION FOR FORM STEVENSON ST AND HARRIS ST FROM THE CITY OF GUELPH FEBRUARY 8, 2022, COMPLETED BY H.B. DESIGN PARTNERSHIP.
 3. SITE PLAN LAYOUT DERIVED FROM AN IDEAL CONCEPT ON FEBRUARY 8, 2022, COMPLETED BY H.B. DESIGN PARTNERSHIP.
 4. LEGAL INFORMATION PROVIDED IN TOPOGRAPHICAL SURVEY REPORT FOR THIS PROJECT DATED OCTOBER 19, 2022.

BENCH MARKS:
 ELEVATIONS PROVIDED ARE GEOMETRIC CONCORDANT WITH THE RESOURCES CANADA'S GEOMETRIC MODEL (H2_210).

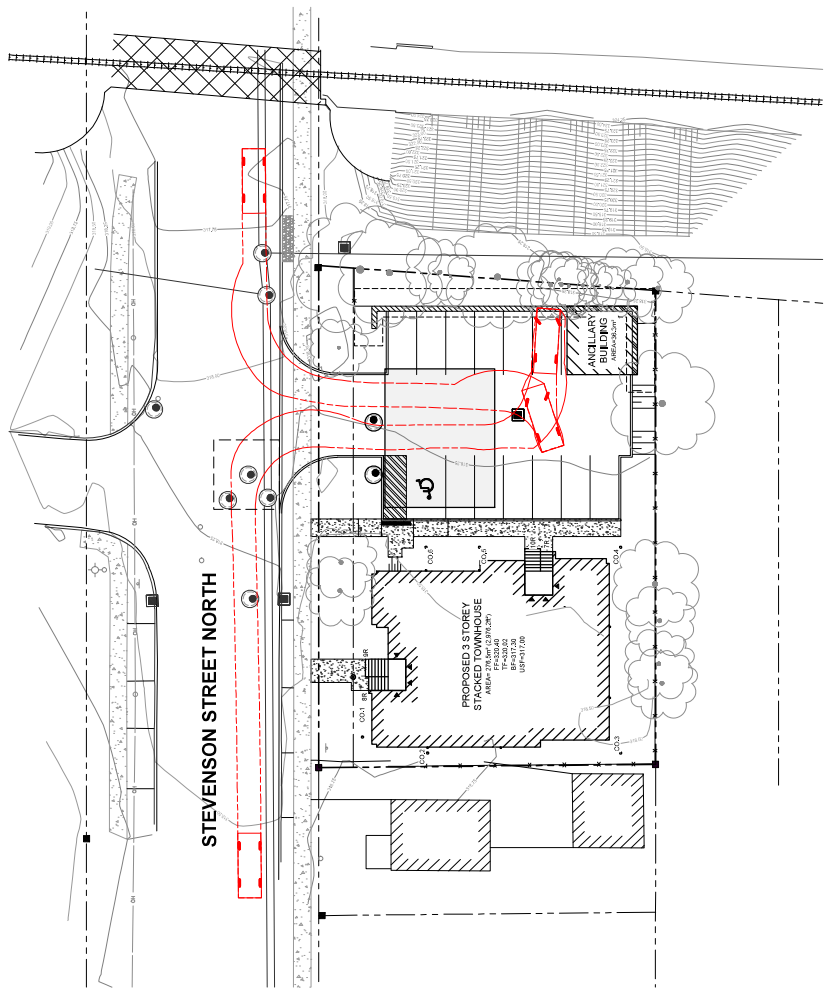
PROFESSIONAL ENGINEER
 A.E. KIRK (10072002)
 LICENSED PROFESSIONAL ENGINEER
 CIVIL ENGINEERING
 10072002
 10072002



NO.	DATE	DESCRIPTION	SCALE
1	10/19/2022	AS SHOWN	AS SHOWN
2	11/10/2022	REVISED	AS SHOWN



14 STEVENSON STREET NORTH
 HB DEVELOPMENTS
 CITY OF GUELPH
 TRAFFIC GEOMETRICS PLAN
 APPROVED BY: [Signature]
 DATE: NOV 2022
 PROJECT NO: TGP-1



LEGEND

	PROPERTY LINE
	EX. EASEMENT
	EX. STORM SEWER
	EX. WATERMAIN
	EX. ELEVATION
	EX. BELL LINE
	EX. GAS LINE
	EX. FENCE LINE
	EX. CONTOURS
	EX. ELEVATION MARK
	PROP. STORM SEWER
	PROP. WATERMAIN
	PROP. BELL LINE
	PROP. GAS LINE
	PROP. FENCE LINE
	CONTOURS
	TREES
	REFERENCE
	SETBACK

