

SCHEDULE A

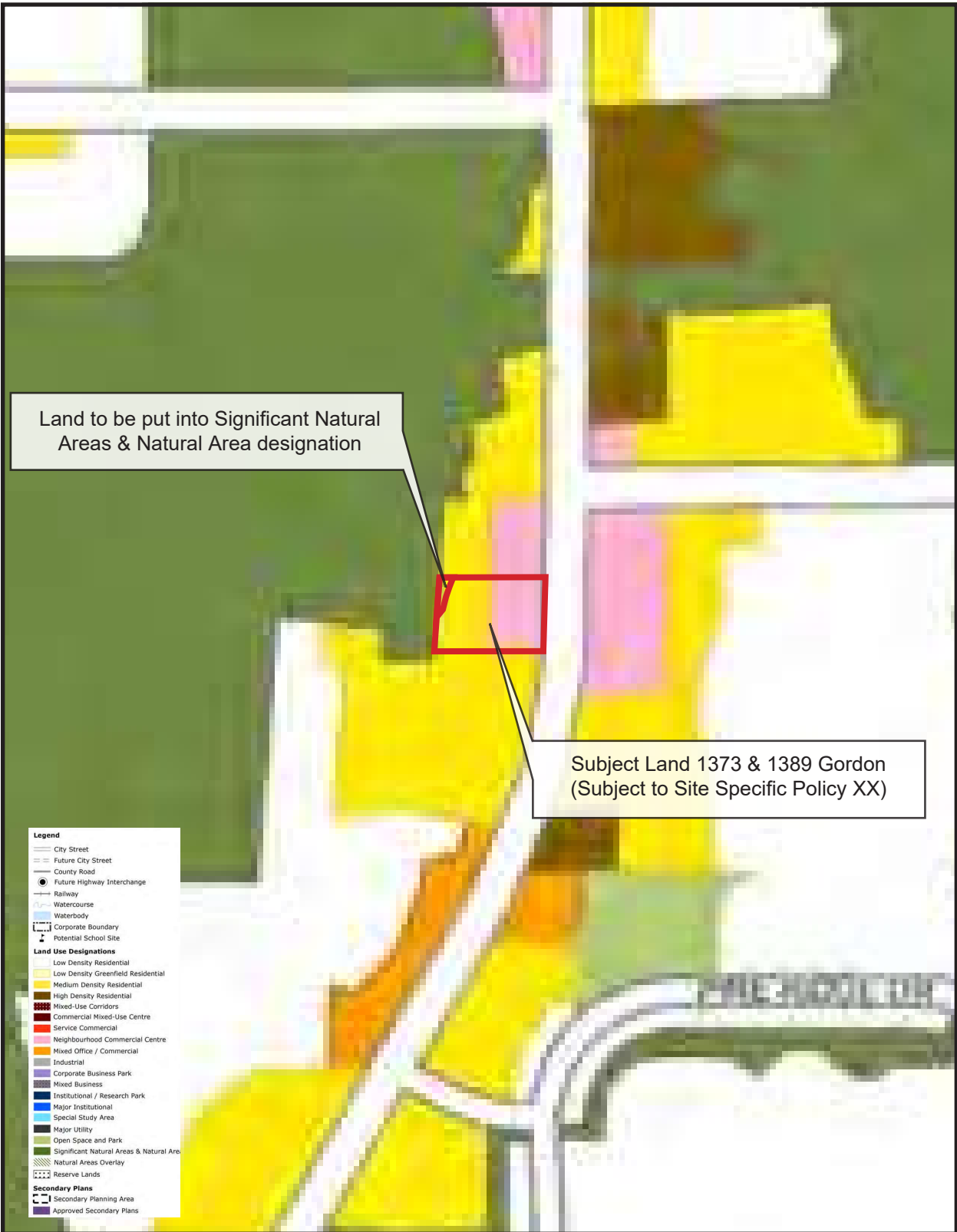
Amendment to Zoning By-Law No. 2020__-__



AREA 1: From Specialized Residential (R.1B) and Natural Heritage Features (WL) Zone to Specialized Commercial Zone (NC-XX)

AREA 2: From Specialized Residential (R.1B) and Natural Heritage Features (WL) Zone to Conservation Land (P.1) Zone





PROPOSED OFFICIAL PLAN DESIGNATIONS
 1373 & 1389 Gordon Street, Guelph

