

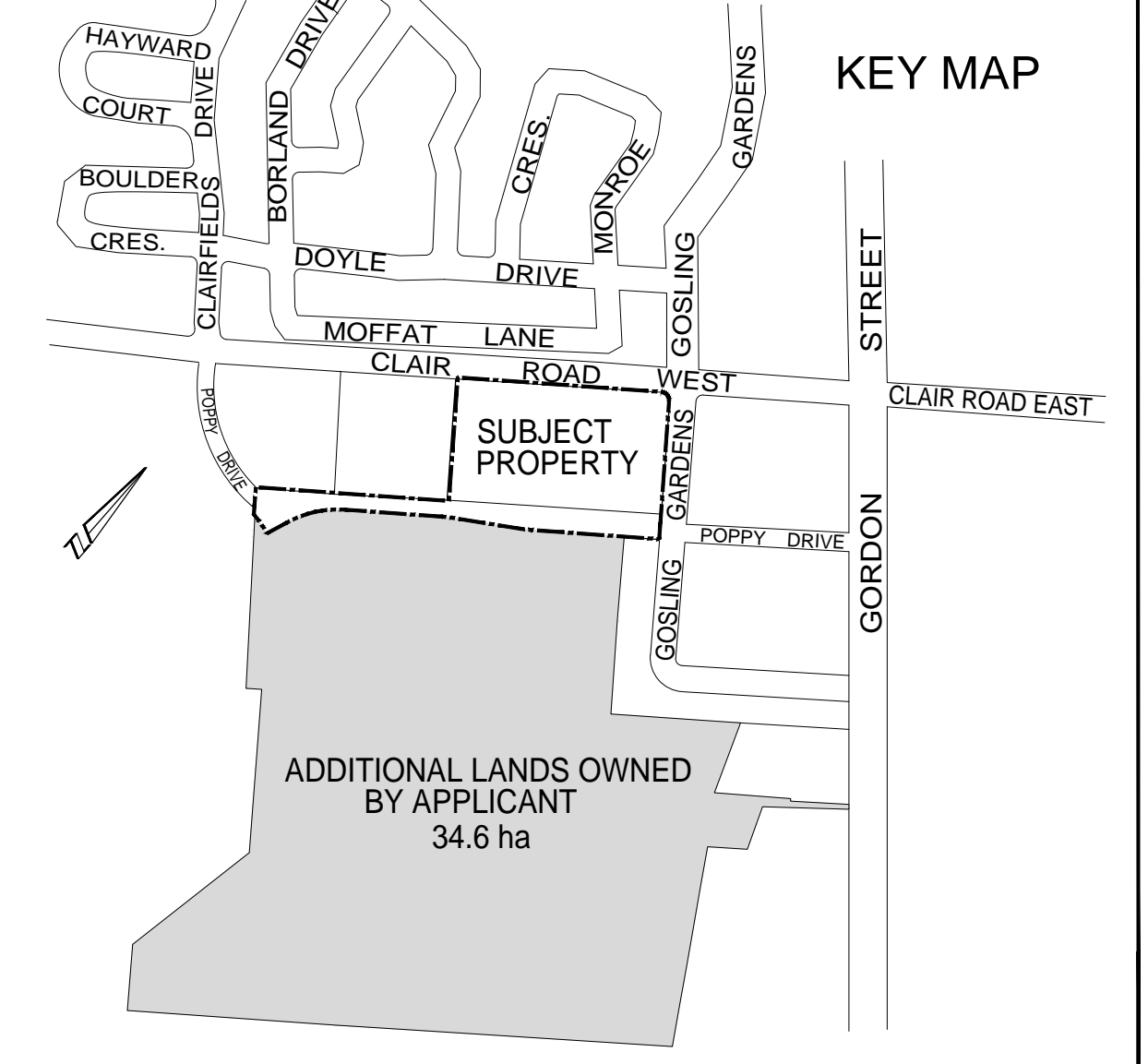
REGISTERED PLAN	61M-39	113	108
132	121	112	109
131	122	111	110
130	123		
129	124		
128	125		
127	126		
126	127		
125	128		
124	129		
123	130		
122	131		
121	132		

ASTRID J. CLOS
 PLANNING CONSULTANTS

423 Woolwich Street, Suite 201
 Guelph, Ontario N1H 3X3
 Email: astrid.clos@ajcplanning.ca
 Phone: (519) 836-7526 (836-PLAN)

DRAFT PLAN OF SUBDIVISION 23T-15501

DATE: SEPTEMBER 25, 2018 SCALE 1:1,000
 PROJECT No. 1301 DRAWN BY: A.R.N.



LEGAL DESCRIPTION
 PART OF LOT 11, CONCESSION 7
 (GEOGRAPHIC TOWNSHIP OF PUSLINCH)
 CITY OF GUELPH

NOTES
 1. TOPOGRAPHIC INFORMATION PROVIDED BY VAN HARTEN SURVEYING INC.

ADDITIONAL INFORMATION
 (UNDER SECTION 51(17) OF THE PLANNING ACT)
 INFORMATION REQUIRED BY CLAUSES a,b,c,d,e,f,g,j AND l ARE AS SHOWN ON DRAFT PLAN.

- h) Municipal Water
- i) Silty, sandy gravel with sand and gravel deposits
- j) Soil porosity from 1X10
- k) Municipal Sewer
- l) None

LAND USE SCHEDULE

DESCRIPTION	BLOCKS	AREA (ha.)
CORPORATE BUSINESS PARK	1	2.886
COMMERCIAL/RESIDENTIAL	2	0.971
STORMWATER MANAGEMENT	3	0.408
FUTURE DEVELOPMENT	4	0.170
PARK	5	0.042
ROADS		1.057
TOTAL		5.534

OWNER'S CERTIFICATE

I, JEFF NEUMANN, ON BEHALF OF McENERY INDUSTRIES LIMITED, H & J PRODUCE LIMITED, SIEBEN HOLDINGS LIMITED, FRANK CERNIUK AND HERBERT NEUMANN AUTHORIZE ASTRID J. CLOS, PLANNING CONSULTANTS TO PREPARE AND SUBMIT THIS DRAFT PLAN OF SUBDIVISION.

[Signature] SEPTEMBER 4, 2015
 JEFF NEUMANN DATE

SURVEYOR'S CERTIFICATE

I CERTIFY THAT THE BOUNDARIES OF THE LAND TO BE SUBDIVIDED AND THEIR RELATIONSHIP TO THE ADJACENT LANDS ARE CORRECTLY SHOWN.

[Signature] SEPTEMBER 4, 2015
 JAMES M. LAWS, O.L.S.
 Van Harten Surveying Inc. DATE