

PLANT MATERIAL LIST - TREES (EXCLUDING WILDLIFE CORRIDOR)					
KEY	QUANT.	COMMON NAME	BOTANICAL NAME	SIZE	COND.
AB	3	Balsam Fir	Abies balsamea	150cm ht.	W.B.
AS	1	Sugar Maple	Acer saccharum	45mm	W.B.
CC	3	Blue Beech	Carpinus caroliniana	45mm	W.B.
OY	3	Ironwood	Ostrya virginiana	45mm	W.B.
TO	3	Eastern White Cedar	Thuja occidentalis	150cm ht.	W.B.
WAR	1	Red Maple	Acer rubrum	2gal.	F.P.
WAB	5	Balsam Fir	Abies balsamea	1gal.	F.P.
Cr	21	Grey Dogwood	Cornus racemosa	50cm 3 gal.	F.P.
Cs	14	Red Osier Dogwood	Cornus sericea	50cm 3 gal.	F.P.
Sa	22	Meadowspire	Spiraea alba	50cm 3 gal.	F.P.
Sc	10	American Elder	Sambucus canadensis	60cm 3 gal.	F.P.
VI	12	Nannyberry	Viburnum lentago	60cm 3 gal.	F.P.

**HYDROSEED MIX FOR NATURALIZED AREA**

**NATIVE PRAIRIE MEADOW MIX (O&C MIX #139)**

- 1% BLACK EYED SUSAN (RUDBECKIA HIRTA)
- 1% EARLY GOLDENROD (SOLIDAGO JUNCEA)
- 25% FOAL BLUEGRASS (POA FALLISTRIS)
- 2% BEARDTONGUE (PENSTEMON DIGITALIS)
- 1% SHOUTY TICK TREFLOIL (DESMODIUM CANADENSIS)
- 20% INDIANGRASS (SORGHASTRUM NUTANS)
- 15% LITTLE BLUE STEEL (SCHIZACHYRIUM SCOPARIUM)
- 1% NEW ENGLAND ASTER (ASTER NOVAE-ANGLIAE)
- 25% SWITCHGRASS (PANICUM VIRGATUM)
- 2% WILD BERGAMOT (MONARDA FISTULOSA)
- 1% WILD VERVAIN (VERBENA URticIFOLIA)

TO BE APPLIED AT A RATE OF 25kg/ha

**CANADA WILD RYE GRASS (NURSE CROP)**

- 100% CANADA WILD RYE (ELYMUS CANADENSIS)

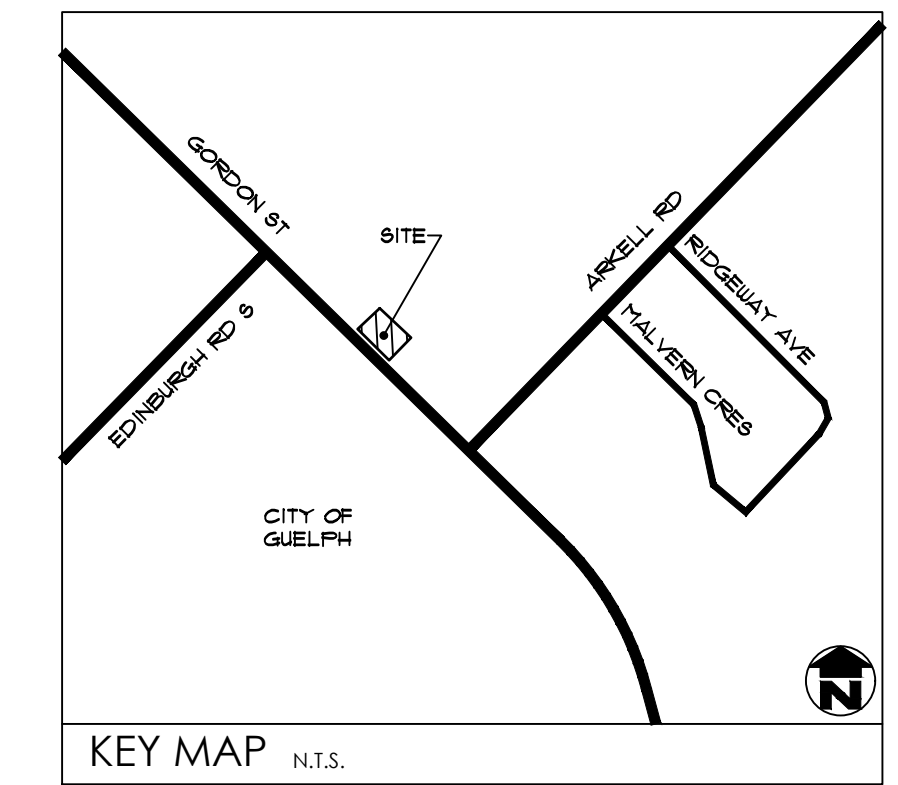
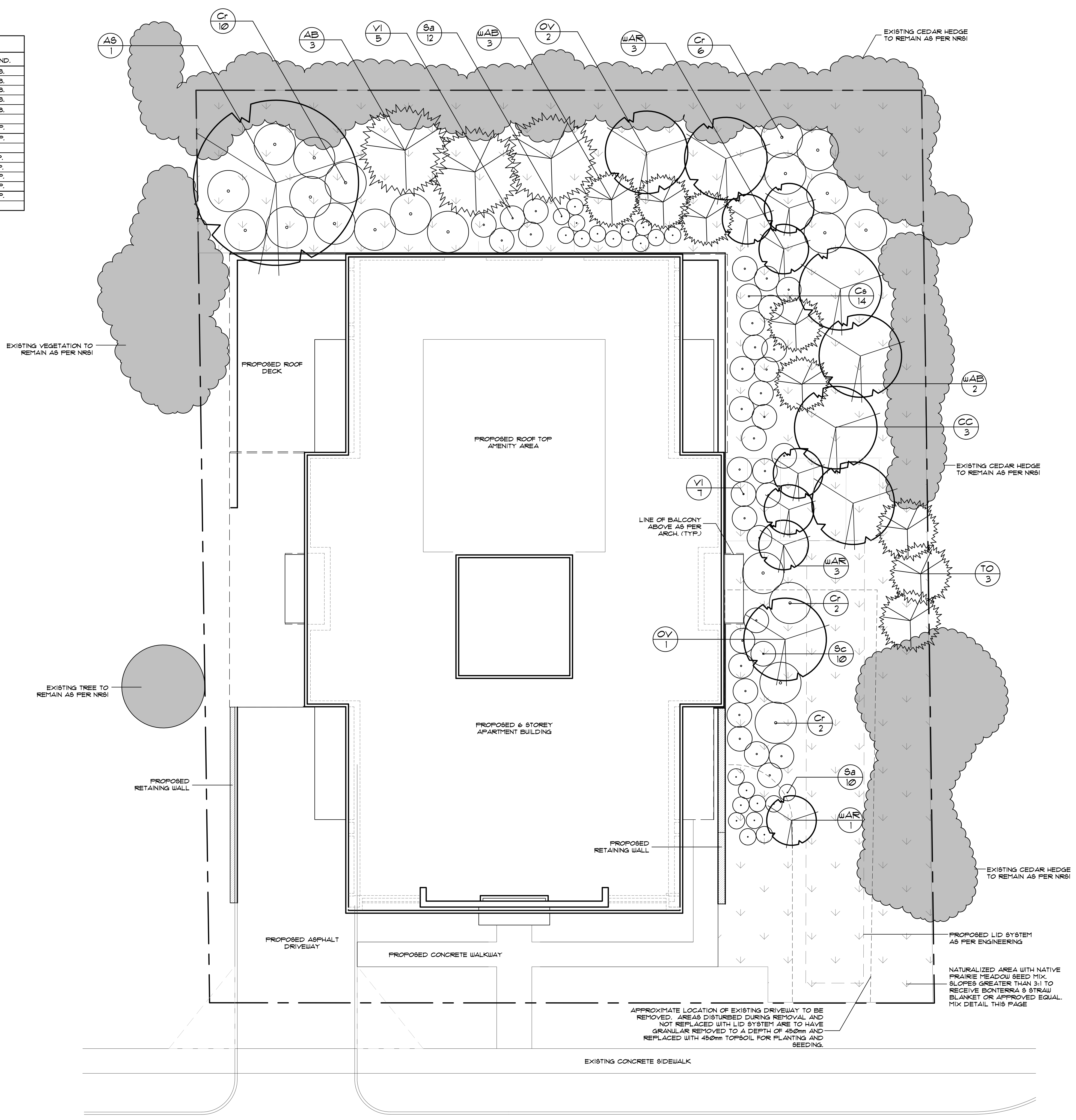
TO BE APPLIED AT A RATE OF 22kg/ha

**LEGEND**

- HYDROSEED FOR NATURALIZED AREA SEE DETAIL ON THIS PAGE

**PLANT MATERIAL SUMMARY**

COMPENSATION TREES	25
COMPENSATION SHRUBS	79 (EQUIVALENT TO 15 TREES AT 5:1 RATIO)
TOTAL COMPENSATION PROVIDED	104
REQUIRED COMPENSATION	91



**GENERAL NOTES**

- ALL WORKMANSHIP WILL BE TO THE STANDARDS OF LANDSCAPE ONTARIO.
- ALL PLANT MATERIAL TO BE NO.1 GRADE NURSERY GROWN IN ACCORDANCE WITH THE CANADIAN STANDARDS FOR NURSERY STOCK, 6TH EDITION, 1998, BY THE CANADIAN NURSERY TRADES ASSOCIATION.
- BACKFILL WILL CONSIST OF SOIL NATIVE TO THE SITE OR GENERAL SOIL TYPE CLASS NATIVE TO THE SITE. TOPSOIL TO BE TESTED FOR NUTRIENT VALUE, AND AMENDED FOR OPTIMAL GROWTH AS PER THE RECOMMENDATIONS OF THE SOIL TEST.
- CONTRACTOR SHALL MAINTAIN ALL LANDSCAPE AREAS UNTIL OWNER'S ACCEPTANCE OF PROJECT.
- CONTRACTOR TO LOCATE ALL UNDERGROUND UTILITIES.
- PLANTING MAY BE ADJUSTED TO SUIT LOCATIONS OF SITE UTILITY STRUCTURES/SERVICES.
- ALL MATERIALS MUST BE APPROVED BY LANDSCAPE ARCHITECT PRIOR TO INSTALLATION.
- SPREAD MULCH TO A MINIMUM OF 100mm COMPACTED DEPTH ON ALL TREE FITS AND PLANTING BEDS.
- CHECK AND VERIFY ALL DIMENSIONS AND QUANTITIES PRIOR TO COMMENCEMENT OF WORK. ANY DISCREPANCIES ARE TO BE REPORTED IN WRITING TO THE LANDSCAPE ARCHITECT. QUANTITIES NOTED WITHIN THIS PLAN SUPERSEDE THOSE IN THE PLANT LIST. ANY SUBSTITUTIONS SHALL BE APPROVED BY THE LANDSCAPE ARCHITECT.
- SOD AS MARKED WITH NURSERY SOD ON A MINIMUM OF 100mm OF CLEAN TOPSOIL, FINE GRADE AND SOD ALL BOULEVARD AREAS TO MUNICIPAL SPECIFICATIONS AND REPAIR DAMAGE TO ADJACENT PROPERTIES, AS REQUIRED.
- FINAL INSPECTION AND ACCEPTANCE OF PLANTING WORK SHALL COINCIDE WITH THE FINAL INSPECTION AND ACCEPTANCE OF ALL WORK INCLUDED IN THE CONTRACT.
- ALL SEEDED SLOPES 3:1 AND GREATER TO RECEIVE EROSION CONTROL MATTING. FIN SOD ON ALL SLOPES OF 3:1 OR GREATER.
- SUBMIT A WRITTEN GUARANTEE TO THE EFFECT THAT ALL PLANTS ACCEPTED DURING THE PERIOD OF JANUARY 1st TO JULY 15th SHALL BE GUARANTEED UNTIL JULY 15th THE FOLLOWING YEAR. PLANTS ACCEPTED DURING THE PERIOD OF JULY 15th TO DECEMBER 31st SHALL BE GUARANTEED FOR ONE YEAR FROM THE DATE OF ACCEPTANCE. THE GUARANTEE PERIODS LISTED ABOVE SHALL APPLY TO ALL 'NURSERY GROWN' PLANTS.
- AT THE TIME OF FINAL INSPECTION ALL PLANTS SHALL BE IN A HEALTHY, VIGOROUS GROWING CONDITION PLANTED IN FULL ACCORDANCE WITH DRAWINGS AND CONDITIONS.
- SITE PLAN AS PER JAMES FRYETT ARCHITECT INC.
- ENGINEERING AS PER MTE CONSULTANTS INC. AND IS PROVIDED FOR INFORMATION ONLY.
- CLIENT: CAROUSEL ESTATE HOMES INC.



no.	date	description	by
1.	May 7, 18	Issued for approval	CMH

**PROPOSED DEVELOPMENT**  
**1300 GORDON STREET**  
 City of Guelph

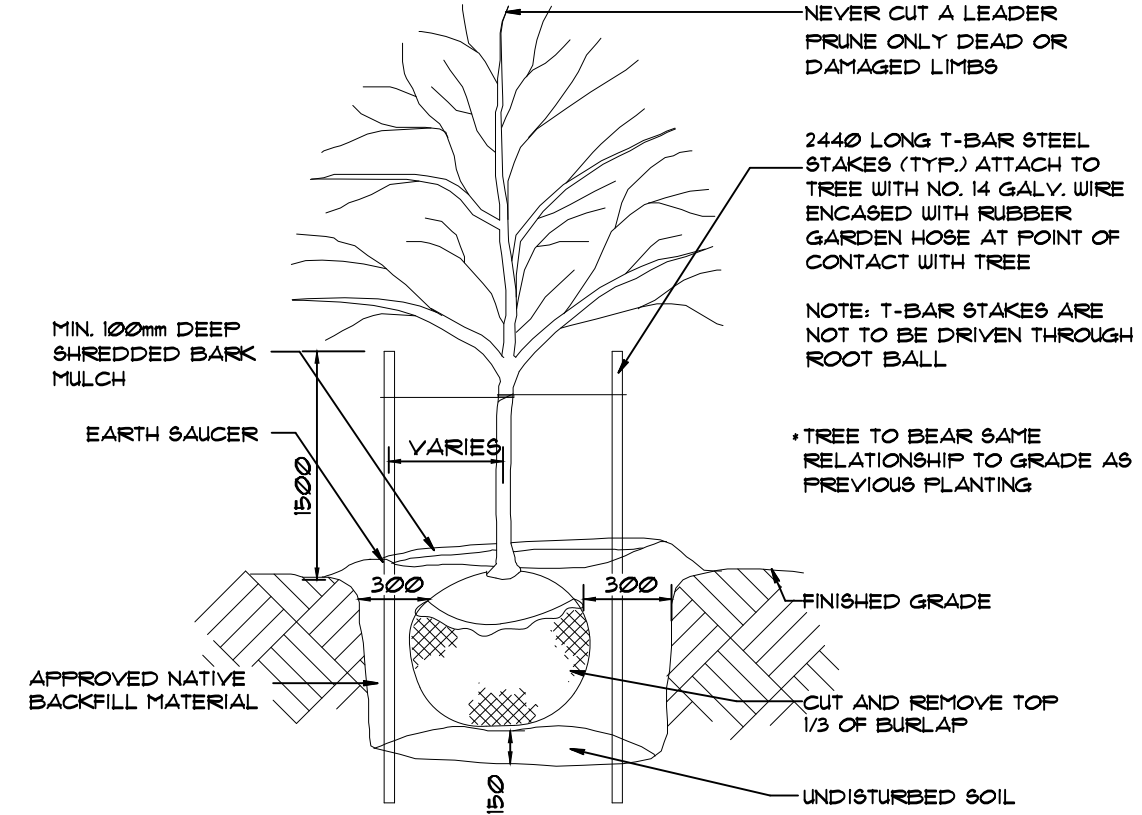
**Ecological Linkage**  
**Landscape Plan**

**Mackinnon & Associates**  
 Providing Solutions in Urban, Landscape and Environmental Planning  
 a division of 907216 Ontario Inc.  
 550 Parkside Drive, Unit A-21, Waterloo, Ontario N2L 5V4  
 Tel: (519) 725-5140 FAX: (519) 725-5144

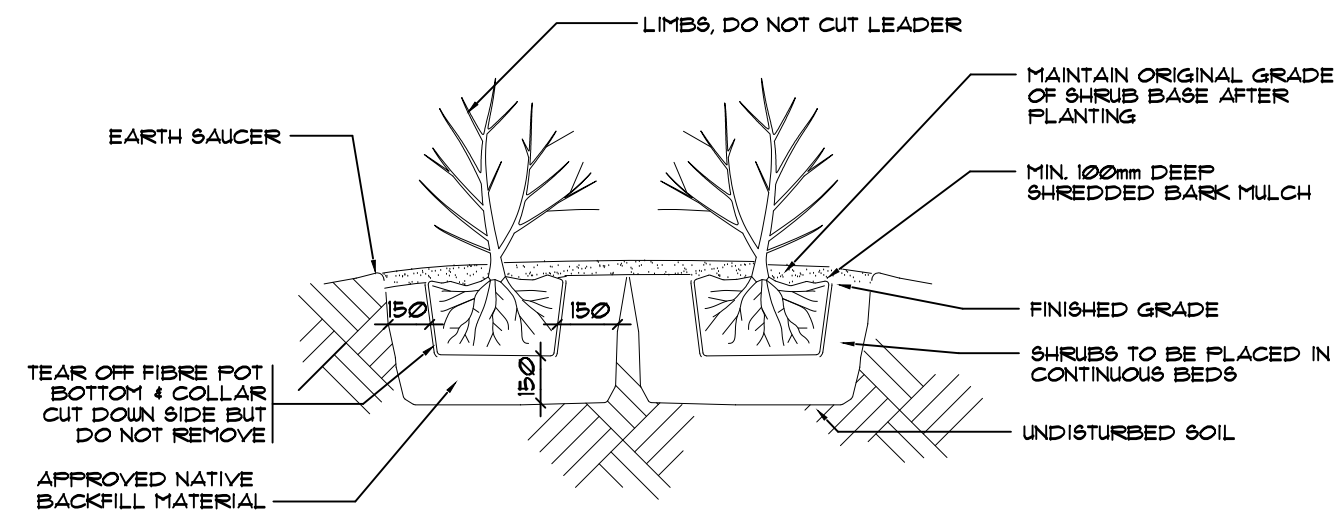
DRAWN BY:	CMH	DESIGNED BY:	CMH	APPROVED BY:	AWH
PROJECT NO.:	2018-01	SCALE:	1:125	PROJECT START DATE:	December 2017
PLOTTED:	May 7, 2018	SHEET:			L1

TREE ORIENTATION:  
 CALIPER TREES TO BE PLANTED IN THE SAME ORIENTATION AS IN NURSERY (DOTS TO BE PLACED ON TREE AT NURSERY INDICATING NORTH)

RODENT GUARD:  
 60mm CALIBER DECIDUOUS TREES TO BE PROTECTED WITH 12m LONG TUBEX STANDARD TREESHELTER (OR APPROVED EQUAL) BURIED 50mm



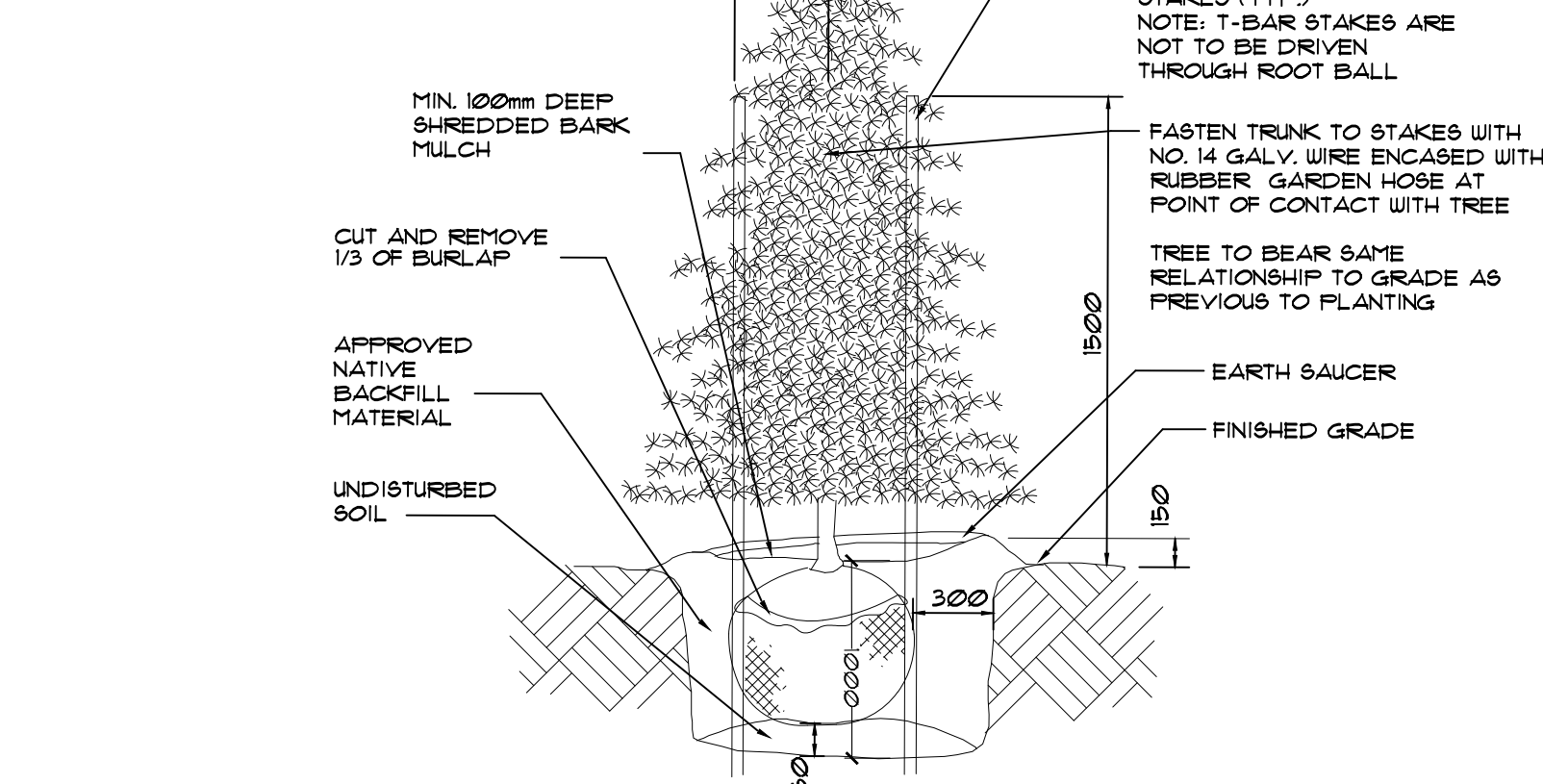
1 DECIDUOUS TREE PLANTING DETAIL  
 NTS



2 SHRUB PLANTING DETAIL  
 NTS

TREE ORIENTATION:  
 CALIPER TREES TO BE PLANTED IN THE SAME ORIENTATION AS IN NURSERY (DOTS TO BE PLACED ON TREE AT NURSERY INDICATING NORTH)

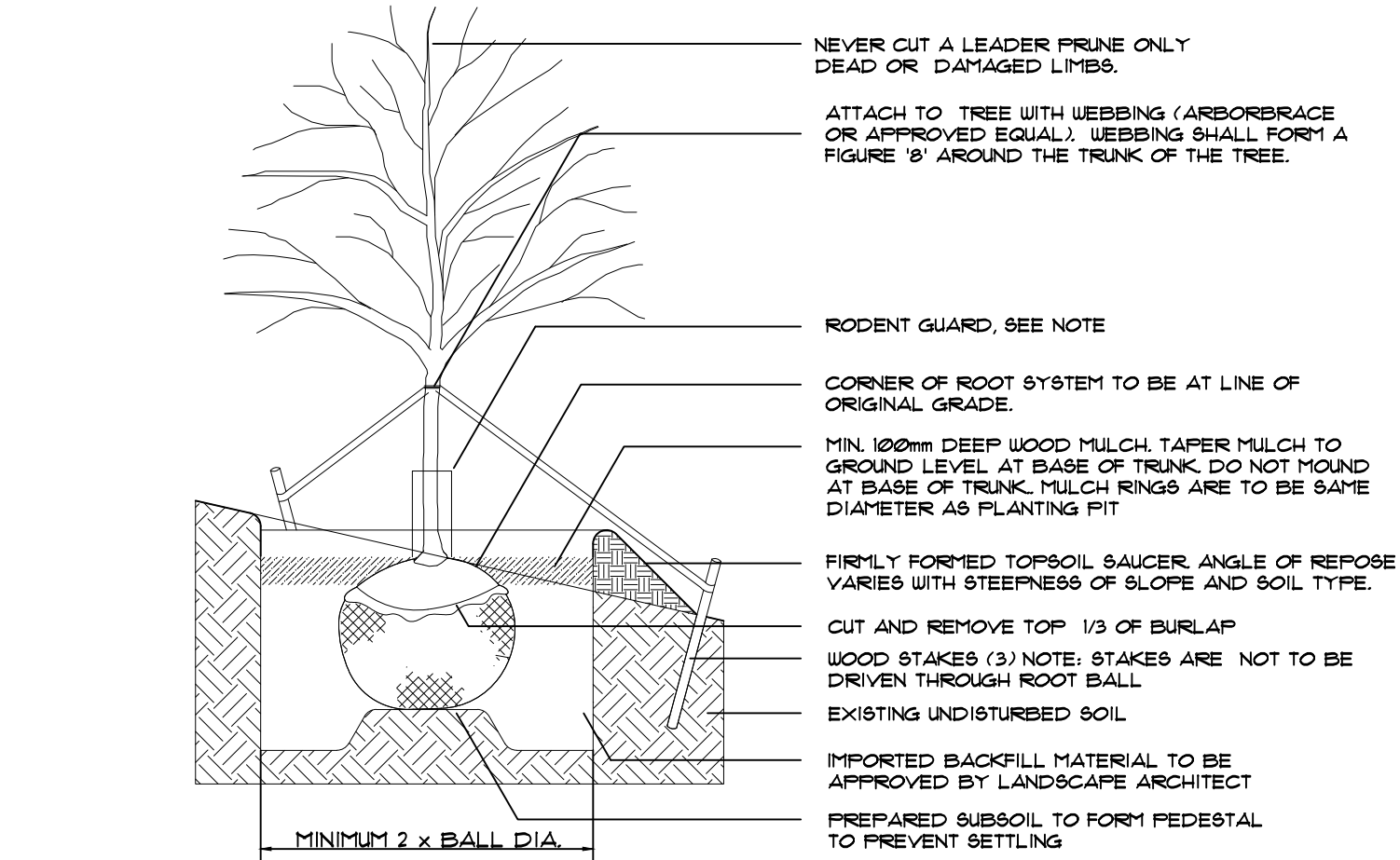
RODENT GUARD:  
 CONIFEROUS TREES TO BE PROTECTED WITH PLASTIC SPIRAL PERFORATED TREE WRAP. INSTALL TO UNDERSIDE OF PRIMARY LATERAL BRANCHES BURIED 50mm



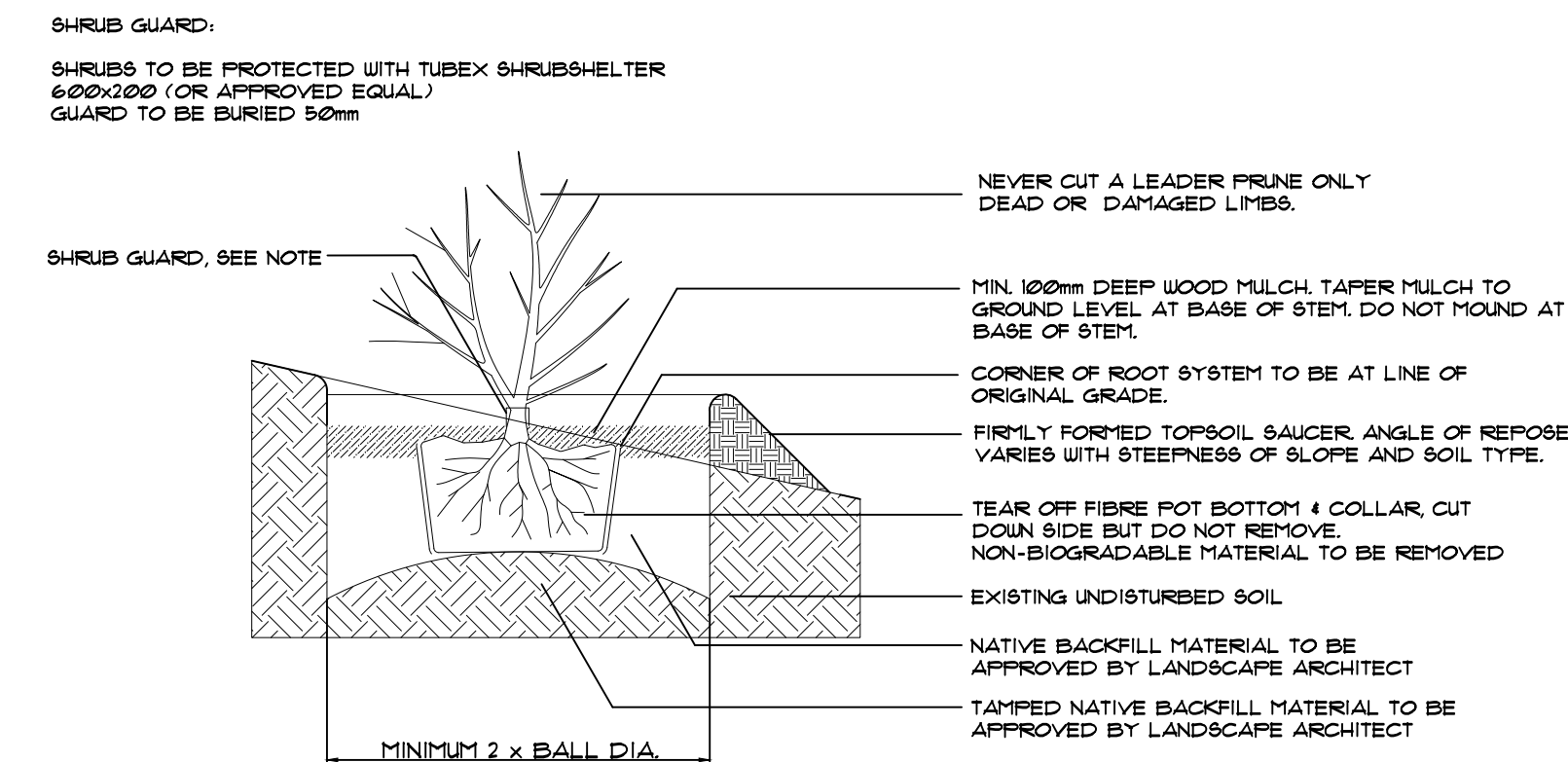
3 CONIFEROUS TREE PLANTING DETAIL  
 NTS

TREE ORIENTATION:  
 CALIPER TREES TO BE PLANTED IN THE SAME ORIENTATION AS IN NURSERY (DOTS TO BE PLACED ON TREE AT NURSERY INDICATING NORTH)

RODENT GUARD:  
 60mm CALIBER DECIDUOUS TREES TO BE PROTECTED WITH 12m LONG TUBEX STANDARD TREESHELTER (OR APPROVED EQUAL) BURIED 50mm



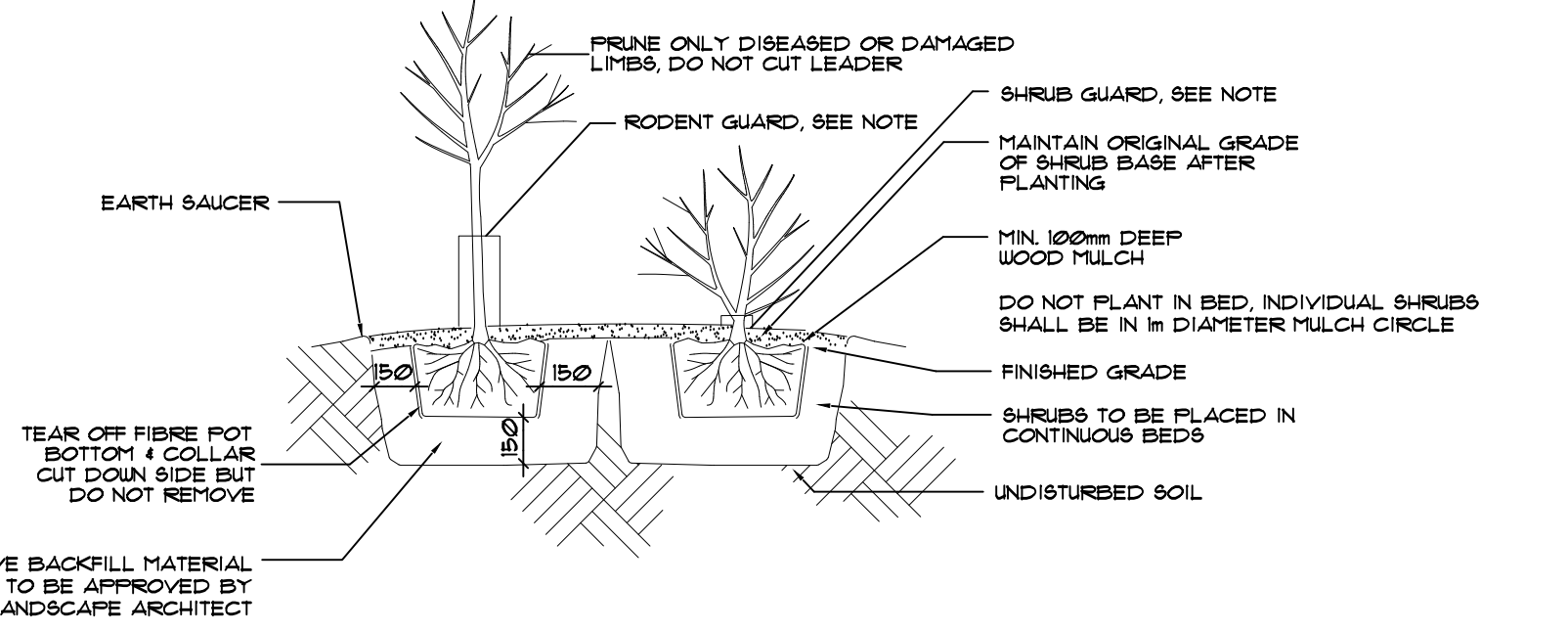
4 DECIDUOUS TREE PLANTING ON A SLOPE  
 NTS



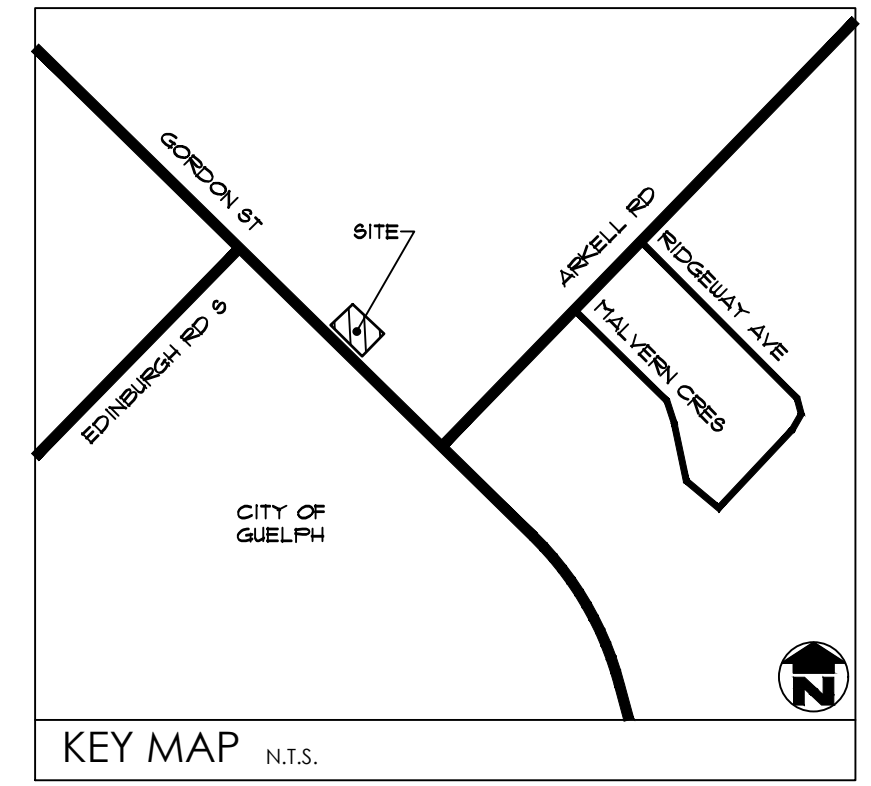
5 SHRUB PLANTING ON A SLOPE  
 NTS

RODENT GUARD:  
 1 GAL. DECIDUOUS TREES TO BE PROTECTED WITH 60mm LONG TUBEX STANDARD TREESHELTER (OR APPROVED EQUAL) BURIED 50mm

SHRUB GUARD:  
 SHRUBS TO BE PROTECTED WITH TUBEX SHRUBSHELTER 600x180 (OR APPROVED EQUAL) GUARD TO BE BURIED 50mm



6 SHRUB/ 1 GAL TREE PLANTING DETAIL  
 NTS



no.	date	description	by
1.	May 7, 18	Issued for approval	CMH

PROPOSED DEVELOPMENT  
 1300 GORDON STREET  
 City of Guelph

Ecological Linkage  
 Landscape Details

**Mackinnon & Associates**  
 Providing Solutions in Urban, Landscape and Environmental Planning  
 a division of 907216 Ontario Inc.  
 550 Parkside Drive, Unit A-21, Waterloo, Ontario N2L 5V4  
 Tel: (519) 725-5140 FAX: (519) 725-5144

DRAWN BY:	DESIGNED BY:	APPROVED BY:
CMH	CMH	AWH
PROJECT NO. 2018-01	SCALE: As Noted	PROJECT START DATE: December 2017
PLOTTED: May 7, 2018	SHEET:	L2