



# **9 Valley Road, 1242, 1250, and 1260 Gordon Street, Guelph**

## **Tree Preservation Plan**

Prepared for:

Tricar Developments Inc.  
3800 Colonel Talbot Road,  
London, ON N6P 1H5

Project No. 2347A | March 2020



# **NATURAL RESOURCE SOLUTIONS INC.**

Aquatic, Terrestrial and Wetland Biologists

9 Valley Road, 1242, 1250, and 1260 Gordon Street, Guelph

## Tree Preservation Plan

### Project Team

David Stephenson	Senior Biologist, Project Advisor
Ken Burrell	Terrestrial & Wetland Biologist, Project Manager
Jeremy Bannon	Terrestrial & Wetland Biologist, Certified Arborist
Kaitlin Filippov	GIS Analyst

Report submitted on March 27, 2020



David Stephenson, M.Sc.  
Senior Biologist and Certified Arborist



Ken Burrell, M.E.S.  
Terrestrial and Wetlands Biologist



Jeremy Bannon, B.E.S.  
Certified Arborist ON-1921A  
Terrestrial and Wetland Biologist

## Table of Contents

1.0	Introduction .....	1
2.0	Tree Inventory and Methodology .....	4
3.0	Summary of Tree Inventory Findings.....	6
4.0	Tree Protection Measures and Recommended Mitigation.....	7
5.0	Tree Compensation Plan.....	8
6.0	Tree Protection Measures and Recommended Mitigation.....	10
6.1	Prior to Construction .....	10
6.2	During Construction.....	10
6.3	Post-Construction .....	10
7.0	References.....	11

## List of Appendices

Appendix I Tree Inventory Data

Appendix II Tree Health and Potential for Structural Failure Assessment Criteria

Appendix III Conditions of Assessment

Appendix IV Tree Data and Summary Tables

## Maps

Map 1. Study Area and Natural Features

Map 2. Tree Inventory and Protection Plan

## 1.0 Introduction

Natural Resource Solutions Inc. (NRSI) was retained in October 2019 by Tricar Developments Inc. to complete a Tree Preservation Plan (TPP) for a proposed residential development located at 9 Valley Road, 1242, 1250, and 1260 Gordon Street, in the City of Guelph.

NRSI was previously retained in 2014 by the previous landowner to complete a variety of natural heritage studies in support of a development proposal. As part of these studies, NRSI completed a tree inventory of the subject property. Before the development proposal was realized, the property was sold to Tricar Developments Inc. This Tree Preservation Plan represents updated information incorporating the original inventory data with more recent inventory data provided by Stantec Consulting (Stantec Consulting 2020).

The subject property is approximately 3.67ha in area and contains 3 existing residential dwellings, driveways, cultural meadows, cultural plantations, and other planted and naturally regenerating trees. The subject property is bound by Gordon Street to the west, residential dwellings fronting Valley Road to the north, the Torrence Creek Swamp Provincially Significant Wetland Complex to the east, and the Liberty Square apartment complex to the south. Rectangular in shape, the subject property includes an additional lot extending north to Valley Road (Map 1).

The Tree Preservation Plan was conducted in accordance with the City of Guelph By-law (2010)-19058. This by-law states that if an owner wishes to destroy or injure a regulated tree and if none of the exemptions set out in this by-law are applicable, then the owner shall submit the information required in Part 5 of the by-law, including a Landscaping, Replanting and Replacement Plan. Within the By-law, a regulated tree is defined as

*“a specimen of any species of deciduous or coniferous growing woody perennial plant, supported by a single root system, which has reached, or could have reached a height at least 4.5m from the ground at physiological maturity, is located on a lot that is greater than 0.2 hectares (0.5 acres) in size and has a [Diameter at Breast Height] (DBH) of at least 10cm”.*

According to the By-law, the destruction or injury of a regulated tree is exempt from the requirement for a permit if the regulated tree is:

- *“A tree on lands used for Institution, golf course, commercial or industrial purposes, provided that a Tree Management Plan has been submitted to, and approved, by an*

*Inspector, subject to such as the Inspector may have considered necessary” [Part 4, section (k)].*

The City of Guelph’s Official Plan (City of Guelph 2018) also requires that a Tree Inventory and Preservation Plan be required for the replacement of all healthy indigenous trees measuring over 10cm DBH.

Section 4.2.4 Tree Inventory and Tree Preservation Plan within the Official Plan notes:

1. *“Tree Inventory and Tree Preservation Plans shall as a minimum include:*
  - i) *A Tree Inventory measuring all trees over 10cm diameter at breast height [DBH], including the size, species composition and health, and indigenous shrubs in accordance with the City’s tree inventory guidelines,*
  - ii) *A Tree Preservation Plan identifying healthy indigenous and non-invasive trees to be protected, including those that may be transplanted (e.g. small specimens),*
  - iii) *The protective measures required for tree protection during construction, and*
  - iv) *Measures for avoiding disturbance to any breeding birds during construction”*

This report provides the findings of the tree inventory, analysis of grading, servicing and site plans against the overall health and the potential for structural failure of trees, protection measures for trees to be retained, and recommended mitigation and compensation measures. The tree data and mapping has been compared to the layout of the proposed site plan. Map 2 shows the tree inventory data overlaying the proposed site plan. This plan shows the proposed building layout, and trees inventoried. Avoidance, mitigation, and protection measures for trees were examined to determine which trees would be impacted and which could be retained. In the case of trees requiring removal, compensation for removal is discussed.

This report summarizes the following:

- findings of the tree inventory,
- assessment of overall health and potential for structural failure of inventoried trees,
- tree retention analysis based on the preliminary site plan, and, recommended tree protection, mitigation and compensation measures.

Butternut (*Juglans cinerea*) is Endangered Provincially and is therefore regulated by the Ministry of Environment, Conservation and Parks (MECP). Several Butternut are known to occur on the

subject property, which will require removal or potential impact. Correspondence and permitting processes will be required with the MECP to facilitate the proposed site plan. Removal of trees, as well as any impacts to a 50m radius of a Butternut requires a Butternut Health Assessment and, depending on the results, specific permitting and compensation discussions with the MECP. This report, and any approval of this report received by the City of Guelph, does not constitute approval for Species at Risk destruction or impact, which is regulated by the MECP. This process is underway for the identified Butternuts, and is outside of the scope of this Plan.

## 2.0 Tree Inventory and Methodology

Comprehensive inventories of trees  $\geq 10\text{cm}$  in DBH have been completed routinely on the subject property. Since NRSI completed an original tree inventory in 2014, Stantec has completed an updated inventory of all trees on the subject property in 2018 and 2019 (Stantec Consulting 2020). NRSI completed a site visit on December 19, 2019 to verify tree information, and subsequently compiled original NRSI data with the updated information provided by Stantec, accounting for a complete set of tree inventory data. Some inventories were conducted in the leaf-off period; therefore, NRSI was able to assess the overall health and potential for structural failure of trees within the subject property, but not the foliar characteristics of deciduous individuals. Individual trees that were  $\geq 10\text{cm}$  in DBH were tagged with a pre-numbered aluminum forestry tag (if located on the subject property) and assessed by a Certified Arborist. If trees were present in monoculture hedgerow features, a polygon method was used. The location of trees inventoried was surveyed using an SXBlue II GNSS GPS unit by the Certified Arborist and are shown on Map 2. A complete list of the trees that were assessed and their overall health and potential for structural failure is included in Appendix I. No bat habitat assessments were completed in conjunction with the tree assessments.

The following information was recorded for each tree:

- species,
- DBH,
- crown radius (metres),
- general health (excellent, good, fair, poor, very poor, dead),
- potential for structural failure (improbable, possible, probable, imminent),
- tree location (on-site/boundary/off-site), and,
- general comments (i.e. disease, aesthetic quality, development constraints, sensitivity to development).

The overall health and potential for structural failure of each tree was assessed based on the criteria outlined in Appendix II (Dunster 2009) (Dunster et al. 2013). NRSI has exercised a reasonable standard of care, skill and diligence as would be customarily and normally provided in carrying out these assessments. The assessments have been made using accepted arboricultural techniques. These include a visual examination of each tree for structural defects, scars, external indications of decay such as fungal fruiting bodies, evidence of insect attack, the condition of any visible root structures, the degree and direction of lean (if any), the general condition of the tree(s) and the surrounding site, and the current or planned proximity of

property and people. None of the trees examined on the property were dissected, cored, probed, or climbed and detailed root crown examinations involving excavation were not undertaken. The conditions for this assessment, including restrictions, professional responsibility, and third-party liability can be found in Appendix III.



### 3.0 Summary of Tree Inventory Findings

In total, 707 trees were inventoried, comprising 9 species. Of the trees inventoried and assessed, 475 (67.2%) are native species and 232 (32.8%) are non-native. Several Eastern White Cedar (*Thuja occidentalis*) hedgerows are present, as well as a hedgerow of Freeman's Maple (*Acer X freemanii*) and Norway Spruce (*Picea abies*). These trees were inventoried as groups (Polygon A-F) due to the similarity of species, location, age and conditions. A complete list of trees inventoried is provided in Appendix I, with summarizing tables in Appendix IV. Tree locations within and adjacent to the subject property are shown on Map 2.

## **4.0 Tree Protection Measures and Recommended Mitigation**

Tree removal and retention was based on two considerations:

- 1) Trees identified as having a probable or imminent potential for structural failure or poor or very poor health, or identified as dead: The removal of these trees may be recommended for safety, especially if they are located within striking distance of a component of the proposed development, or existing off-site pathways, roads or buildings.
- 2) Trees that require removal based on the extent of proposed site grading: The location of the trees was compared to the location of the components of the grading plan, as shown on Map 2 (Stantec 2020).

Of the 707 trees inventoried, 606 are anticipated to be removed. This includes trees situated along the grading limit or in close proximity that may incur root damage as a result of grading. Most of these trees are in fair health with an improbable potential for structural failure, and range in size from 10cm DBH to 105cm DBH.

Removal of boundary, off-site and municipal trees will require the permission of all owners involved. If the main stem of any tree is located on multiple properties, all owners of those properties must be consulted before any tree removal occurs.

## 5.0 Tree Compensation Plan

Section 5 (h) in the City's tree by-law (2010)-19058 states that "where three or more trees are proposed for Destruction or Injuring, and where the Inspector so requires, a Landscaping, Replanting and Replacement Plan" is required. Overall compensation for tree loss is a requirement of the City's by-law which notes that "each tree Destroyed or Injured be replaced with one or more replacements trees to be planted and maintained to the satisfaction of the Inspector in accordance with the Landscaping, Replanting and Replacement Plans approved by the Inspector" [Section 7 (b)].

According to City of Guelph Tree By-law Number (2010)-19058, trees exempt from compensation must have the following site-specific criteria:

"A tree having no living tissue, having 70% or more of its crown dead, or being infected by a lethal pathogen, fungus or insect (including the Emerald Ash Borer or the Asian Long-horned Beetle), and where required, a certificate issued by an Arborist, confirming this justification for Destruction or Injuring, has been submitted to an Inspector" [Part 4, section (a)],

"A tree which is Hazardous, and where required, a certificate issued by an Arborist, confirming this justification for Destruction or Injuring, has been submitted to an Inspector" [Part 4, section (b)]

"A specimen of *Rhamnus cathartica* (Common Buckthorn), *Rhamnus frangula* (Glossy Buckthorn), *Alnus glutinosa* (Black Alder), *Elaeagnus umbellata* (Autumn Olive), or *Morus alba* (White Mulberry)" [Part 4, section (g)],

"A fruit tree that is capable of producing fruit for human consumption" [Part 4, section (h)].

A total of 3 trees require removal based on their structural integrity, and an additional 8 trees are also in poor or very poor health. Table 1 provides a summary of the trees inventoried throughout and adjacent to the property, total number proposed for removal and the proposed compensation plan. A complete list of inventoried trees, including a determination of whether trees require compensation, is provided in Appendix I.

**Table 1. Summary of Trees to be Removed and Recommended Compensation Plan**

Trees Inventoried	Total
ROW Trees	3
Off-Site Privately Owned Trees	3
Boundary Trees	35

On-Site Trees	666
Total number of trees inventoried	707
<b>Tree Compensation Break Down</b>	
Total Trees to be Removed	606
Trees to be removed due to their structural condition (exempt from compensation)	88
Fair-good quality on-site trees to be removed due to development	512
Fair-good quality off-site or boundary private trees to be removed due to development	4
Fair-good quality public trees to be removed due to development	2
Trees requiring compensation (private)	516
Trees requiring compensation (ROW)	2

Compensation for the 516 private trees and 2 public trees may be in the form of 3:1 replacement 60mm caliper trees, \$500 cash-in-lieu value, 5:1 shrubs, or 5:1 of smaller stock trees. Most likely, a combination of these methods will be used. Other compensation measures may be discussed with the City, and should be finalized in the Detailed Design stage. The retention analysis should also be refined at the Detailed Design stage, if necessary.

## **6.0 Tree Protection Measures and Recommended Mitigation**

### **6.1 Prior to Construction**

Temporary tree protection fencing (TPF) will be situated where trees are adjacent to the limit of disturbance/grading as shown on Map 2. The temporary TPF will be installed and maintained by the Developer. Prior to any construction activities (rough grading, vegetation and tree removal), the TPF will be installed at the limit of development. Prior to works commencing on-site, fence installation and location is to be inspected by a Certified Arborist and/or the on-site Environmental Inspector. Signage indicating the purpose of protection fencing will be attached to the paige-wire fencing every 100-150m. Recommended fencing locations are along the property edge, as shown on Map 2.

The Tree Protection Plan is to be reviewed and approved by the City of Guelph. Upon approval of the Tree Protection Plan, and prior to any on-site works (i.e. rough grading, tree removal), a qualified environmental consultant is to submit written verification to the City that all of the recommended tree protection measures have been installed in accordance with the Tree Protection Plan.

### **6.2 During Construction**

Temporary TPF is to be maintained by the Developer during the entire construction period to ensure that off-site trees being retained and their root systems are protected. Any minimal damage (i.e. damage to limbs or roots) to trees to be retained during construction must be pruned using proper arboricultural techniques. Should any of the trees intended to be retained be seriously damaged or die as a result of construction activities, the owner will remove and replace the tree at their own expense at a 3:1 ratio. Replacement species are to be reviewed by a Certified Ontario Landscape Architect (OLA) or Certified Arborist. Watering and pruning of newly planted trees will be carried out by the owner/contractor as required during the warranty period (approximately 2 years).

### **6.3 Post-Construction**

As trees being retained are situated beyond the property line, it is recommended that the temporary tree protection fencing be removed upon completion of all construction activities and adjacent areas are stabilized with a vegetative cover (i.e. sod) to the satisfaction of the Environmental Inspector or qualified biologist.

## 7.0 References

- City of Guelph. 2010. The Official Plan of The City of Guelph By-law Number (2010)-19058.
- City of Guelph. 2018. The City of Guelph Official Plan, March 2018 Consolidation.  
(<https://guelph.ca/plans-and-strategies/official-plan/>).
- Dunster, J. A. 2009. Tree Risk Assessment in Urban Areas and the Urban/Rural Interface: Course Manual. Pacific Northwest Chapter, International Society of Arboriculture, Silverton, Oregon.
- Dunster, J. A., E. T. Smiley, N. Matheny, and S. Lily. 2013. Tree Risk Assessment Manual. International Society of Arboriculture, Champaign, Illinois.
- Stantec Consulting. 2020. 9 Valley Road, 1242, 1250, and 1260 Gordon Street Tree Inventory Data.

Appendix I  
Tree Inventory Data

---

1250 Gordon Street Tree Preservation Plan  
Tree Inventory Data

Tree Number	Common Name	Scientific Name	Native/ Non-native	Stem Count	DBH (cm)	Crown Radius (m)	Potential for Structural Failure Rating	Overall Condition	Location	Proposed Action
77	Hawthorn species	<i>Crataegus sp.</i>	Native	1	12	2.0	High	Fair	Subject Property	Retain
78	Hawthorn Species	<i>Crataegus sp.</i>	Native	2	12	2.0	Medium	Fair	Subject Property	Retain
79	White Elm	<i>Ulmus americana</i>	Native	1	15	3.5	Low	Good	Subject Property	Retain
80	White Elm	<i>Ulmus americana</i>	Native	1	16	1.0	High	Dead	Subject Property	Retain
101	Sugar Maple	<i>Acer saccharum ssp. saccharum</i>	Native	1	65	7.0	Medium	Fair	Boundary	Retain
102	Sugar Maple	<i>Acer saccharum ssp. saccharum</i>	Native	1	46	5.0	Medium	Fair	Subject Property	Retain
103	White Spruce	<i>Picea glauca</i>	Native	1	24	3.0	Medium	Fair	Boundary	Retain
104	Sugar Maple	<i>Acer saccharum ssp. saccharum</i>	Native	1	60	6.0	High	Poor	Boundary	Retain
105	Norway Maple	<i>Acer platanoides</i>	Non-Native	1	20	3.5	Medium	Fair	Boundary	Retain
106	Manitoba Maple	<i>Acer negundo</i>	Native	1	22	4.0	Medium	Fair	Boundary	Retain
107	Eastern White Cedar	<i>Thuja occidentalis</i>	Native	2	11	1.5	High	Poor	Boundary	Retain
108	Eastern White Cedar	<i>Thuja occidentalis</i>	Native	2	10	1.0	Medium	Poor	Boundary	Retain
109	Black Walnut	<i>Juglans nigra</i>	Native	1	21	5.0	Medium	Fair	Subject Property	Retain
110	Eastern White Cedar	<i>Thuja occidentalis</i>	Native	1	14	2.5	Medium	Fair	Subject Property	Retain
111	Eastern White Cedar	<i>Thuja occidentalis</i>	Native	1	23	2.5	Medium	Fair	Subject Property	Retain
112	Norway Spruce	<i>Picea abies</i>	Non-Native	1	56	4.0	Medium	Fair	Subject Property	Remove
113	Common Pear	<i>Pyrus communis</i>	Non-Native	1	27	3.0	High	Very Poor	Subject Property	Remove
114	Eastern White Cedar	<i>Thuja occidentalis</i>	Native	1	22	2.0	High	Poor	Subject Property	Remove
115	Eastern White Cedar	<i>Thuja occidentalis</i>	Native	1	10	1.0	High	Poor	Subject Property	Remove
116	Eastern White Cedar	<i>Thuja occidentalis</i>	Native	1	14	1.0	High	Poor	Subject Property	Remove
117	Eastern White Cedar	<i>Thuja occidentalis</i>	Native	1	11	1.0	High	Poor	Subject Property	Remove
118	Eastern White Cedar	<i>Thuja occidentalis</i>	Native	2	12	2.0	High	Poor	Subject Property	Remove
119	Eastern White Cedar	<i>Thuja occidentalis</i>	Native	2	17	1.0	High	Poor	Subject Property	Remove
120	Eastern White Cedar	<i>Thuja occidentalis</i>	Native	1	16	2.0	High	Poor	Subject Property	Remove
121	Eastern White Cedar	<i>Thuja occidentalis</i>	Native	1	17	1.5	High	Poor	Subject Property	Remove
122	White Elm	<i>Ulmus americana</i>	Native	1	37	5.0	Low	Good	Boundary	Remove
123	Eastern White Cedar	<i>Thuja occidentalis</i>	Native	2	14	3.0	Medium	Fair	Subject Property	Remove
124	Eastern White Cedar	<i>Thuja occidentalis</i>	Native	1	15	1.0	High	Poor	Boundary	Remove
125	Eastern White Cedar	<i>Thuja occidentalis</i>	Native	2	21	3.0	High	Poor	Subject Property	Remove
126	Eastern White Cedar	<i>Thuja occidentalis</i>	Native	1	30	3.0	High	Poor	Subject Property	Remove
127	Eastern White Cedar	<i>Thuja occidentalis</i>	Native	2	21	3.0	High	Poor	Subject Property	Remove
128	Eastern White Cedar	<i>Thuja occidentalis</i>	Native	1	16	1.0	High	Poor	Subject Property	Remove
129	Norway Spruce	<i>Picea abies</i>	Non-Native	1	36	4.0	Low	Fair	Subject Property	Remove
130	Eastern White Cedar	<i>Thuja occidentalis</i>	Native	1	19	1.5	Medium	Fair	Subject Property	Remove
131	Eastern White Cedar	<i>Thuja occidentalis</i>	Native	1	15	2.0	Medium	Fair	Subject Property	Remove
132	Norway Spruce	<i>Picea abies</i>	Non-Native	1	16	3.0	High	Poor	Subject Property	Remove
133	Norway Spruce	<i>Picea abies</i>	Non-Native	1	28	4.0	Low	Good	Subject Property	Remove
134	Norway Spruce	<i>Picea abies</i>	Non-Native	1	38	4.0	Medium	Fair	Subject Property	Remove
135	Norway Spruce	<i>Picea abies</i>	Non-Native	1	21	3.0	High	Poor	Subject Property	Remove
136	Common Pear	<i>Pyrus communis</i>	Non-Native	1	23	4.0	High	Poor	Subject Property	Remove
137	Common Apple	<i>Malus domestica</i>	Non-Native	3	29	5.0	High	Poor	Subject Property	Remove
138	Common Apple	<i>Malus domestica</i>	Non-Native	1	22	5.0	High	Poor	Subject Property	Remove
139	Norway Spruce	<i>Picea abies</i>	Non-Native	1	51	5.0	Low	Good	Subject Property	Remove
140	Eastern White Cedar	<i>Thuja occidentalis</i>	Native	1	15	3.0	Medium	Fair	Subject Property	Remove
141	Eastern White Cedar	<i>Thuja occidentalis</i>	Native	4	21	1.5	Medium	Fair	Subject Property	Remove
142	Eastern White Cedar	<i>Thuja occidentalis</i>	Native	2	12	2.0	High	Poor	Subject Property	Remove
143	Eastern White Cedar	<i>Thuja occidentalis</i>	Native	2	16	2.0	High	Poor	Subject Property	Remove
144	Eastern White Cedar	<i>Thuja occidentalis</i>	Native	1	17	1.0	Medium	Fair	Subject Property	Remove
145	Eastern White Cedar	<i>Thuja occidentalis</i>	Native	2	19	3.0	High	Poor	Subject Property	Remove
146	Eastern White Cedar	<i>Thuja occidentalis</i>	Native	2	19	2.0	Medium	Fair	Subject Property	Remove
147	Common Apple	<i>Malus domestica</i>	Non-Native	1	53	5.0	Medium	Fair	Subject Property	Remove
148	Colorado Spruce	<i>Picea pungens</i>	Non-Native	1	11	1.5	Low	Excellent	Subject Property	Remove
149	Norway Maple	<i>Acer platanoides</i>	Non-Native	1	25	5.0	Medium	Fair	Subject Property	Remove
150	Colorado Spruce	<i>Picea pungens</i>	Non-Native	1	10	1.0	High	Dead	Subject Property	Remove
151	Sugar Maple	<i>Acer saccharum ssp. saccharum</i>	Native	1	61	5.0	Medium	Fair	Subject Property	Remove
152	Sugar Maple	<i>Acer saccharum ssp. saccharum</i>	Native	1	53	5.0	Medium	Fair	Subject Property	Remove
153	Sugar Maple	<i>Acer saccharum ssp. saccharum</i>	Native	1	64	5.0	High	Poor	Subject Property	Remove
154	White Ash	<i>Fraxinus americana</i>	Native	1	23	4.0	Low	Good	Subject Property	Remove
155	Norway Spruce	<i>Picea abies</i>	Non-Native	1	43	3.0	Low	Good	Subject Property	Remove
156	Eastern White Cedar	<i>Thuja occidentalis</i>	Native	2	24	4.0	Medium	Fair	Subject Property	Remove
157	Eastern White Cedar	<i>Thuja occidentalis</i>	Native	1	15	1.5	High	Poor	Subject Property	Remove
158	Norway Spruce	<i>Picea abies</i>	Non-Native	1	45	4.0	Low	Good	Subject Property	Remove
159	Norway Spruce	<i>Picea abies</i>	Non-Native	1	40	4.0	Low	Good	Subject Property	Remove
160	Norway Spruce	<i>Picea abies</i>	Non-Native	1	32	2.0	Medium	Fair	Subject Property	Remove
161	Eastern White Cedar	<i>Thuja occidentalis</i>	Native	3	18	3.5	High	Dead	Subject Property	Remove
162	Eastern White Cedar	<i>Thuja occidentalis</i>	Native	2	19	2.0	High	Dead	Subject Property	Remove
163	Norway Spruce	<i>Picea abies</i>	Non-Native	1	38	4.0	Low	Good	Subject Property	Remove
164	Eastern White Cedar	<i>Thuja occidentalis</i>	Native	1	16	2.0	Medium	Fair	Subject Property	Remove
165	Norway Spruce	<i>Picea abies</i>	Non-Native	1	29	3.0	Low	Good	Subject Property	Remove
166	Norway Spruce	<i>Picea abies</i>	Non-Native	1	36	3.5	Medium	Fair	Subject Property	Remove
167	Norway Spruce	<i>Picea abies</i>	Non-Native	1	15	2.0	Medium	Fair	Subject Property	Remove
168	Norway Spruce	<i>Picea abies</i>	Non-Native	1	40	4.0	Low	Good	Subject Property	Remove
169	Norway Spruce	<i>Picea abies</i>	Non-Native	1	14	1.0	High	Dead	Subject Property	Remove
170	Norway Spruce	<i>Picea abies</i>	Non-Native	1	28	3.5	Medium	Fair	Subject Property	Remove
171	Norway Spruce	<i>Picea abies</i>	Non-Native	1	25	5.0	Medium	Fair	Subject Property	Remove
172	Norway Spruce	<i>Picea abies</i>	Non-Native	1	27	3.0	Medium	Fair	Subject Property	Remove
173	Siberian Elm	<i>Ulmus pumila</i>	Non-Native	1	52	8.0	Medium	Fair	Boundary	Retain
174	European Weeping Birch	<i>Betula pendula</i>	Non-Native	2	26	4.0	Medium	Fair	Public	Remove
175	Sugar Maple	<i>Acer saccharum ssp. saccharum</i>	Native	1	43	6.0	Medium	Fair	Public	Remove
176	Honey Locust	<i>Gleditsia triacanthos</i>	Native	1	40	6.0	Medium	Fair	Public	Retain
177	Honey Locust	<i>Gleditsia triacanthos</i>	Native	1	21	5.0	Medium	Fair	Off-Property	Retain
178	Honey Locust	<i>Gleditsia triacanthos</i>	Native	1	14	4.0	Medium	Fair	Off-Property	Retain
179	Norway Spruce	<i>Picea abies</i>	Non-Native	1	41	4.0	Medium	Fair	Boundary	Retain



1250 Gordon Street Tree Preservation Plan  
Tree Inventory Data

Tree Number	Common Name	Scientific Name	Native/ Non-native	Stem Count	DBH (cm)	Crown Radius (m)	Potential for Structural Failure Rating	Overall Condition	Location	Proposed Action
180	Norway Maple	<i>Acer platanoides</i>	Non-Native	1	67	6.0	High	Poor	Boundary	Retain
181	Tamarack	<i>Larix laricina</i>	Native	1	30	4.0	Medium	Fair	Boundary	Retain
182	Sugar Maple	<i>Acer saccharum ssp. saccharum</i>	Native	1	53	7.0	Medium	Fair	Subject Property	Retain
183	Norway Maple	<i>Acer platanoides</i>	Non-Native	1	51	7.0	Medium	Fair	Subject Property	Prune
184	American Basswood	<i>Tilia americana</i>	Native	3	42	6.0	Medium	Fair	Subject Property	Remove
185	Sugar Maple	<i>Acer saccharum ssp. saccharum</i>	Native	1	17	4.0	Low	Good	Boundary	Remove
186	Linden	<i>Tilia sp.</i>	Non-Native	1	28	5.0	Medium	Fair	Subject Property	Remove
187	Common Apple	<i>Malus domestica</i>	Non-Native	1	44	4.0	High	Poor	Subject Property	Remove
188	Linden	<i>Tilia sp.</i>	Non-Native	1	19	3.0	Medium	Fair	Subject Property	Remove
189	Sugar Maple	<i>Acer saccharum ssp. saccharum</i>	Native	1	47	5.0	Medium	Fair	Subject Property	Remove
190	Eastern White Cedar	<i>Thuja occidentalis</i>	Native	1	12	1.0	Low	Good	Subject Property	Remove
191	Eastern White Cedar	<i>Thuja occidentalis</i>	Native	2	20	1.0	Medium	Fair	Subject Property	Remove
192	Eastern White Cedar	<i>Thuja occidentalis</i>	Native	3	16	2.0	Medium	Fair	Subject Property	Remove
193	Norway Spruce	<i>Picea abies</i>	Non-Native	1	50	3.5	Low	Excellent	Subject Property	Remove
194	Norway Spruce	<i>Picea abies</i>	Non-Native	1	52	3.0	Low	Good	Subject Property	Remove
195	Linden	<i>Tilia sp.</i>	Non-Native	1	22	3.5	Medium	Fair	Subject Property	Remove
196	Norway Spruce	<i>Picea abies</i>	Non-Native	1	35	3.0	Low	Excellent	Subject Property	Remove
197	Linden	<i>Tilia sp.</i>	Non-Native	1	23	4.0	Medium	Fair	Subject Property	Remove
198	Norway Spruce	<i>Picea abies</i>	Non-Native	1	39	3.0	Low	Excellent	Subject Property	Remove
199	Linden	<i>Tilia sp.</i>	Non-Native	1	13	3.0	Medium	Fair	Subject Property	Remove
200	Norway Spruce	<i>Picea abies</i>	Non-Native	1	34	3.0	Low	Good	Subject Property	Remove
201	Norway Spruce	<i>Picea abies</i>	Non-Native	1	41	5.0	Medium	Fair	Subject Property	Remove
202	Norway Spruce	<i>Picea abies</i>	Non-Native	1	19	2.0	High	Poor	Subject Property	Remove
203	Norway Spruce	<i>Picea abies</i>	Non-Native	2	14	1.0	High	Dead	Subject Property	Remove
204	Sugar Maple	<i>Acer saccharum ssp. saccharum</i>	Native	1	52	7.0	Medium	Fair	Subject Property	Remove
205	Norway Spruce	<i>Picea abies</i>	Non-Native	1	15	1.5	Medium	Fair	Subject Property	Remove
206	Norway Spruce	<i>Picea abies</i>	Non-Native	1	15	2.0	Medium	Fair	Subject Property	Remove
207	Norway Spruce	<i>Picea abies</i>	Non-Native	2	21	2.0	Medium	Poor	Subject Property	Remove
208	Norway Spruce	<i>Picea abies</i>	Non-Native	1	27	3.0	Medium	Fair	Subject Property	Remove
209	Norway Spruce	<i>Picea abies</i>	Non-Native	1	23	2.0	Medium	Poor	Subject Property	Remove
210	Scots Pine	<i>Pinus sylvestris</i>	Non-Native	1	36	4.0	High	Poor	Subject Property	Remove
211	Common Apple	<i>Malus domestica</i>	Non-Native	1	37	6.0	Medium	Fair	Subject Property	Remove
212	Norway Spruce	<i>Picea abies</i>	Non-Native	1	32	4.0	Low	Good	Subject Property	Remove
213	Norway Spruce	<i>Picea abies</i>	Non-Native	1	24	3.0	Medium	Fair	Subject Property	Remove
214	Norway Spruce	<i>Picea abies</i>	Non-Native	1	36	4.0	Low	Good	Subject Property	Remove
215	Norway Spruce	<i>Picea abies</i>	Non-Native	1	41	4.0	Low	Good	Subject Property	Remove
216	Scots Pine	<i>Pinus sylvestris</i>	Non-Native	1	38	4.0	Medium	Fair	Subject Property	Remove
217	Norway Spruce	<i>Picea abies</i>	Non-Native	1	26	2.0	Medium	Fair	Subject Property	Remove
218	Norway Maple	<i>Acer platanoides</i>	Non-Native	1	40	4.0	Medium	Fair	Subject Property	Remove
219	Norway Spruce	<i>Picea abies</i>	Non-Native	1	31	3.0	Medium	Fair	Subject Property	Remove
220	Norway Spruce	<i>Picea abies</i>	Non-Native	1	32	3.0	Low	Good	Subject Property	Remove
221	Norway Spruce	<i>Picea abies</i>	Non-Native	1	31	3.0	Medium	Fair	Subject Property	Remove
222	Norway Spruce	<i>Picea abies</i>	Non-Native	1	43	3.0	Medium	Fair	Subject Property	Remove
223	Norway Spruce	<i>Picea abies</i>	Non-Native	1	35	3.0	Medium	Fair	Subject Property	Remove
224	Norway Spruce	<i>Picea abies</i>	Non-Native	1	31	3.0	High	Dead	Subject Property	Remove
225	Black Walnut	<i>Juglans nigra</i>	Native	1	42	4.0	High	Poor	Subject Property	Remove
226	Pine Species	<i>Pinus sp.</i>	Non-Native	3	18	3.0	Medium	Fair	Subject Property	Remove
227	Black Walnut	<i>Juglans nigra</i>	Native	1	65	6.0	Medium	Fair	Subject Property	Remove
228	Scots Pine	<i>Pinus sylvestris</i>	Non-Native	1	53	6.0	High	Poor	Subject Property	Remove
229	Norway Spruce	<i>Picea abies</i>	Non-Native	1	31	3.0	Medium	Fair	Subject Property	Remove
230	Freeman's Maple	<i>Acer X freemanii</i>	Native	1	56	6.0	Medium	Fair	Subject Property	Remove
231	Scots Pine	<i>Pinus sylvestris</i>	Non-Native	1	42	3.0	Low	Good	Subject Property	Remove
233	Scots Pine	<i>Pinus sylvestris</i>	Non-Native	1	29	2.5	Low	Good	Subject Property	Retain
235	Scots Pine	<i>Pinus sylvestris</i>	Non-Native	1	23	3.0	Medium	Fair	Subject Property	Retain
236	Scots Pine	<i>Pinus sylvestris</i>	Non-Native	1	15	2.5	Low	Good	Subject Property	Retain
237	Scots Pine	<i>Pinus sylvestris</i>	Non-Native	1	16	2.5	Medium	Fair	Subject Property	Retain
238	Scots Pine	<i>Pinus sylvestris</i>	Non-Native	2	19	3.0	Medium	Fair	Subject Property	Retain
239	Scots Pine	<i>Pinus sylvestris</i>	Non-Native	1	11	1.0	Medium	Good	Subject Property	Retain
240	Scots Pine	<i>Pinus sylvestris</i>	Non-Native	1	14	2.0	Medium	Fair	Subject Property	Retain
241	Scots Pine	<i>Pinus sylvestris</i>	Non-Native	1	11	1.0	Low	Good	Subject Property	Retain
242	Scots Pine	<i>Pinus sylvestris</i>	Non-Native	1	12	1.0	Medium	Fair	Subject Property	Retain
243	Scots Pine	<i>Pinus sylvestris</i>	Non-Native	1	20	3.0	Medium	Fair	Subject Property	Remove
244	Scots Pine	<i>Pinus sylvestris</i>	Non-Native	1	17	2.0	Low	Good	Subject Property	Retain
245	Scots Pine	<i>Pinus sylvestris</i>	Non-Native	1	23	2.0	Low	Good	Subject Property	Remove
246	Black Walnut	<i>Juglans nigra</i>	Native	1	21	3.5	Medium	Fair	Subject Property	Remove
247	Norway Spruce	<i>Picea abies</i>	Non-Native	1	20	2.0	Low	Excellent	Subject Property	Remove
248	White Spruce	<i>Picea glauca</i>	Native	1	12	1.5	Low	Excellent	Subject Property	Remove
249	White Spruce	<i>Picea glauca</i>	Native	1	12	1.5	Low	Good	Subject Property	Remove
250	Eastern White Cedar	<i>Thuja occidentalis</i>	Native	1	14	1.5	Low	Good	Subject Property	Remove
251	Eastern White Cedar	<i>Thuja occidentalis</i>	Native	1	22	2.0	Low	Good	Subject Property	Remove
252	Black Walnut	<i>Juglans nigra</i>	Native	1	10	1.5	Medium	Fair	Subject Property	Remove
253	Scots Pine	<i>Pinus sylvestris</i>	Non-Native	1	13	1.5	Low	Good	Subject Property	Remove
254	Scots Pine	<i>Pinus sylvestris</i>	Non-Native	1	17	2.0	Low	Good	Subject Property	Remove
255	Common Pear	<i>Pyrus communis</i>	Non-Native	3	12	1.0	High	Poor	Subject Property	Remove
256	Scots Pine	<i>Pinus sylvestris</i>	Non-Native	1	30	2.5	Low	Good	Subject Property	Remove
257	Scots Pine	<i>Pinus sylvestris</i>	Non-Native	1	21	2.5	Low	Good	Subject Property	Remove
258	Common Pear	<i>Pyrus communis</i>	Non-Native	2	16	2.5	Medium	Poor	Subject Property	Remove
259	Common Apple	<i>Malus domestica</i>	Non-Native	3	32	4.0	Medium	Poor	Subject Property	Remove
260	Black Maple	<i>Acer saccharum ssp. nigrum</i>	Native	1	14	3.0	High	Poor	Subject Property	Remove
261	Green Ash	<i>Fraxinus pennsylvanica</i>	Native	1	27	5.0	Low	Good	Subject Property	Remove
262	Butternut	<i>Juglans cinerea</i>	Native	1	28	5.0	Medium	Fair	Subject Property	Remove
263	Green Ash	<i>Fraxinus pennsylvanica</i>	Native	1	23	3.0	Medium	Poor	Subject Property	Remove
264	Green Ash	<i>Fraxinus pennsylvanica</i>	Native	1	10	2.0	Low	Fair	Subject Property	Remove
265	White Spruce	<i>Picea glauca</i>	Native	1	23	3.0	Medium	Fair	Subject Property	Remove
266	Black Maple	<i>Acer saccharum ssp. nigrum</i>	Native	1	105	9.0	High	Poor	Subject Property	Remove
267	Green Ash	<i>Fraxinus pennsylvanica</i>	Native	1	12	2.0	Low	Good	Subject Property	Remove
268	Black Maple	<i>Acer saccharum ssp. nigrum</i>	Native	1	19	4.0	High	Poor	Subject Property	Remove
269	Black Maple	<i>Acer saccharum ssp. nigrum</i>	Native	1	12	2.0	High	Poor	Subject Property	Remove
270	Black Maple	<i>Acer saccharum ssp. nigrum</i>	Native	1	11	2.5	High	Poor	Subject Property	Remove
271	Red Oak	<i>Quercus rubra</i>	Native	1	52	7.0	Medium	Fair	Subject Property	Remove

1250 Gordon Street Tree Preservation Plan  
Tree Inventory Data

Tree Number	Common Name	Scientific Name	Native/ Non-native	Stem Count	DBH (cm)	Crown Radius (m)	Potential for Structural Failure Rating	Overall Condition	Location	Proposed Action
272	Red Oak	<i>Quercus rubra</i>	Native	1	20	2.0	High	Very Poor	Subject Property	Remove
273	Red Oak	<i>Quercus rubra</i>	Native	1	23	5.0	Medium	Fair	Subject Property	Remove
274	Red Oak	<i>Quercus rubra</i>	Native	1	13	1.5	Low	Good	Subject Property	Remove
276	Red Oak	<i>Quercus rubra</i>	Native	1	65	8.0	Low	Fair	Subject Property	Remove
277	Red Oak	<i>Quercus rubra</i>	Native	1	18	4.0	Low	Fair	Subject Property	Remove
278	Red Oak	<i>Quercus rubra</i>	Native	1	21	4.0	Medium	Fair	Subject Property	Remove
279	Red Oak	<i>Quercus rubra</i>	Native	1	13	4.0	Medium	Fair	Subject Property	Remove
280	Red Oak	<i>Quercus rubra</i>	Native	1	11	2.0	Medium	Fair	Subject Property	Remove
281	Norway Spruce	<i>Picea abies</i>	Non-Native	1	10	1.0	High	Dead	Subject Property	Remove
282	Red Oak	<i>Quercus rubra</i>	Native	1	65	8.0	Medium	Fair	Subject Property	Remove
283	Norway Spruce	<i>Picea abies</i>	Non-Native	1	16	2.5	Medium	Poor	Subject Property	Remove
284	Norway Spruce	<i>Picea abies</i>	Non-Native	1	18	4.0	Medium	Fair	Subject Property	Remove
285	Norway Spruce	<i>Picea abies</i>	Non-Native	1	23	3.0	Medium	Fair	Subject Property	Remove
286	Norway Spruce	<i>Picea abies</i>	Non-Native	1	16	2.5	Medium	Fair	Subject Property	Remove
287	Norway Spruce	<i>Picea abies</i>	Non-Native	1	18	1.5	Medium	Poor	Subject Property	Remove
288	Norway Spruce	<i>Picea abies</i>	Non-Native	1	13	1.5	Medium	Poor	Subject Property	Remove
289	American Basswood	<i>Tilia americana</i>	Native	1	25	4.0	Medium	Fair	Subject Property	Remove
290	Norway Spruce	<i>Picea abies</i>	Non-Native	1	11	1.5	Medium	Fair	Subject Property	Remove
291	Norway Spruce	<i>Picea abies</i>	Non-Native	1	35	5.0	Low	Good	Subject Property	Remove
292	Norway Spruce	<i>Picea abies</i>	Non-Native	1	15	1.0	Medium	Fair	Subject Property	Remove
293	Norway Spruce	<i>Picea abies</i>	Non-Native	1	35	3.5	Low	Good	Subject Property	Remove
294	Norway Spruce	<i>Picea abies</i>	Non-Native	1	27	3.0	High	Poor	Subject Property	Remove
295	Norway Maple	<i>Acer platanoides</i>	Non-Native	2	19	3.0	High	Poor	Subject Property	Remove
296	Norway Spruce	<i>Picea abies</i>	Non-Native	1	32	4.0	Low	Good	Subject Property	Remove
297	Norway Spruce	<i>Picea abies</i>	Non-Native	1	40	4.0	Low	Good	Subject Property	Remove
298	Fir species	<i>Abies sp.</i>	Non-Native	1	37	4.0	Medium	Fair	Subject Property	Remove
299	Balsam Fir	<i>Abies balsamea</i>	Native	1	15	2.0	Low	Good	Subject Property	Remove
300	Black Walnut	<i>Juglans nigra</i>	Native	1	12	1.5	Low	Good	Subject Property	Remove
301	Norway Spruce	<i>Picea abies</i>	Non-Native	1	31	3.0	Low	Good	Subject Property	Remove
302	Crack Willow	<i>Salix fragilis</i>	Non-Native	1	73	5.0	High	Poor	Subject Property	Remove
303	Red Maple	<i>Acer rubrum</i>	Native	1	12	1.0	High	Dead	Subject Property	Remove
304	White Elm	<i>Ulmus americana</i>	Native	1	11	4.0	High	Poor	Subject Property	Remove
305	Manitoba Maple	<i>Acer negundo</i>	Native	1	10	2.0	High	Poor	Subject Property	Remove
306	Manitoba Maple	<i>Acer negundo</i>	Native	1	17	2.0	High	Poor	Subject Property	Remove
307	Black Walnut	<i>Juglans nigra</i>	Native	1	11	2.0	Low	Good	Subject Property	Remove
310	White Elm	<i>Ulmus americana</i>	Native	2	10	4.0	High	Fair	Subject Property	Remove
311	White Elm	<i>Ulmus americana</i>	Native	1	16	1.5	Medium	Fair	Subject Property	Remove
312	White Elm	<i>Ulmus americana</i>	Native	1	33	4.0	High	Poor	Subject Property	Remove
313	White Elm	<i>Ulmus americana</i>	Native	1	25	3.5	Medium	Fair	Subject Property	Remove
314	Black Walnut	<i>Juglans nigra</i>	Native	1	10	3.0	Low	Good	Subject Property	Remove
315	Black Walnut	<i>Juglans nigra</i>	Native	1	14	3.0	Low	Good	Subject Property	Remove
316	Black Walnut	<i>Juglans nigra</i>	Native	1	14	3.0	Low	Good	Subject Property	Remove
317	White Elm	<i>Ulmus americana</i>	Native	1	19	2.5	Medium	Fair	Subject Property	Remove
318	Black Walnut	<i>Juglans nigra</i>	Native	1	49	6.0	Low	Good	Subject Property	Remove
319	White Elm	<i>Ulmus americana</i>	Native	1	15	3.0	High	Dead	Subject Property	Remove
320	Black Walnut	<i>Juglans nigra</i>	Native	1	62	7.0	Medium	Fair	Subject Property	Retain
321	White Elm	<i>Ulmus americana</i>	Native	1	13	3.0	Medium	Fair	Subject Property	Retain
322	White Elm	<i>Ulmus americana</i>	Native	1	12	3.0	High	Dead	Subject Property	Remove
323	White Elm	<i>Ulmus americana</i>	Native	1	31	3.0	High	Dead	Subject Property	Remove
324	Black Walnut	<i>Juglans nigra</i>	Native	1	15	2.5	Low	Good	Subject Property	Remove
325	Black Walnut	<i>Juglans nigra</i>	Native	1	11	2.0	High	Poor	Subject Property	Remove
326	White Elm	<i>Ulmus americana</i>	Native	1	18	3.0	Medium	Good	Subject Property	Remove
327	Black Walnut	<i>Juglans nigra</i>	Native	1	12	2.0	Medium	Fair	Subject Property	Remove
328	Black Walnut	<i>Juglans nigra</i>	Native	1	12	3.0	Medium	Fair	Subject Property	Remove
329	Black Walnut	<i>Juglans nigra</i>	Native	1	26	3.0	Medium	Fair	Subject Property	Retain
330	White Elm	<i>Ulmus americana</i>	Native	1	31	5.0	Medium	Fair	Subject Property	Remove
331	White Elm	<i>Ulmus americana</i>	Native	1	14	3.0	Medium	Fair	Subject Property	Remove
332	Hawthorn Species	<i>Crataegus sp.</i>	Native	1	14	2.0	High	Poor	Subject Property	Remove
333	White Elm	<i>Ulmus americana</i>	Native	1	10	2.0	Medium	Fair	Subject Property	Remove
334	Scots Pine	<i>Pinus sylvestris</i>	Non-Native	1	15	1.0	High	Poor	Subject Property	Remove
335	Black Walnut	<i>Juglans nigra</i>	Native	1	26	3.0	Medium	Fair	Subject Property	Remove
336	Eastern Red Cedar	<i>Juniperus virginiana</i>	Native	2	14	1.5	Medium	Fair	Subject Property	Remove
337	Black Walnut	<i>Juglans nigra</i>	Native	1	17	3.0	Medium	Fair	Subject Property	Remove
338	White Elm	<i>Ulmus americana</i>	Native	1	11	3.0	Medium	Fair	Subject Property	Remove
339	White Elm	<i>Ulmus americana</i>	Native	1	14	2.0	High	Dead	Subject Property	Remove
340	Black Walnut	<i>Juglans nigra</i>	Native	1	11	2.0	High	Poor	Subject Property	Remove
341	Black Cherry	<i>Prunus serotina</i>	Native	2	15	2.0	High	Poor	Subject Property	Retain
342	Manitoba Maple	<i>Acer negundo</i>	Native	1	36	6.0	High	Poor	Subject Property	Retain
343	Black Cherry	<i>Prunus serotina</i>	Native	1	37	6.0	High	Dead	Subject Property	Remove
344	Black Walnut	<i>Juglans nigra</i>	Native	1	11	2.0	High	Poor	Subject Property	Remove
345	White Elm	<i>Ulmus americana</i>	Native	1	12	2.0	High	Poor	Subject Property	Remove
346	Black Walnut	<i>Juglans nigra</i>	Native	1	12	1.0	High	Dead	Subject Property	Remove
347	Black Walnut	<i>Juglans nigra</i>	Native	1	17	3.0	High	Dead	Subject Property	Remove
348	Black Walnut	<i>Juglans nigra</i>	Native	1	11	2.0	Low	Fair	Subject Property	Remove
349	Common Apple	<i>Malus domestica</i>	Non-Native	2	10	4.0	High	Poor	Subject Property	Remove
350	Black Walnut	<i>Juglans nigra</i>	Native	1	12	3.0	Low	Good	Subject Property	Remove
351	White Elm	<i>Ulmus americana</i>	Native	1	23	5.0	High	Dead	Subject Property	Remove
352	Black Cherry	<i>Prunus serotina</i>	Native	2	13	4.0	Medium	Fair	Subject Property	Remove
353	Scots Pine	<i>Pinus sylvestris</i>	Non-Native	1	12	2.0	Low	Good	Subject Property	Remove
355	Hawthorn Species	<i>Crataegus sp.</i>	Native	2	12	3.0	High	Poor	Subject Property	Remove
356	White Elm	<i>Ulmus americana</i>	Native	1	22	4.0	High	Dead	Subject Property	Remove
357	White Elm	<i>Ulmus americana</i>	Native	1	27	4.0	Medium	Fair	Subject Property	Remove
358	Black Walnut	<i>Juglans nigra</i>	Native	1	12	3.0	Medium	Fair	Subject Property	Remove
359	White Elm	<i>Ulmus americana</i>	Native	1	16	4.0	Medium	Fair	Subject Property	Remove
361	Black Walnut	<i>Juglans nigra</i>	Native	1	39	5.0	High	Poor	Boundary	Remove
362	Black Walnut	<i>Juglans nigra</i>	Native	1	48	7.0	Medium	Fair	Subject Property	Remove
363	Black Walnut	<i>Juglans nigra</i>	Native	1	38	5.0	Medium	Fair	Boundary	Remove

1250 Gordon Street Tree Preservation Plan  
Tree Inventory Data

Tree Number	Common Name	Scientific Name	Native/ Non-native	Stem Count	DBH (cm)	Crown Radius (m)	Potential for Structural Failure Rating	Overall Condition	Location	Proposed Action
364	Black Walnut	<i>Juglans nigra</i>	Native	1	39	6.0	Low	Good	Boundary	Remove
365	Black Cherry	<i>Prunus serotina</i>	Native	3	23	3.0	High	Very Poor	Boundary	Remove
366	White Elm	<i>Ulmus americana</i>	Native	1	10	2.0	Low	Good	Subject Property	Retain
367	White Elm	<i>Ulmus americana</i>	Native	1	26	5.0	High	Very Poor	Subject Property	Remove
368	White Elm	<i>Ulmus americana</i>	Native	1	13	3.0	Low	Good	Subject Property	Remove
369	White Elm	<i>Ulmus americana</i>	Native	1	15	3.0	High	Dead	Subject Property	Remove
370	Scots Pine	<i>Pinus sylvestris</i>	Non-Native	1	17	3.0	High	Dead	Subject Property	Remove
371	White Elm	<i>Ulmus americana</i>	Native	1	12	3.0	Medium	Fair	Subject Property	Retain
372	Butternut	<i>Juglans cinerea</i>	Native	1	17	3.0	Medium	Fair	Subject Property	Retain
373	Scots Pine	<i>Pinus sylvestris</i>	Non-Native	1	32	4.0	Low	Good	Subject Property	Remove
374	White Elm	<i>Ulmus americana</i>	Native	1	32	3.0	Medium	Fair	Subject Property	Retain
375	White Elm	<i>Ulmus americana</i>	Native	1	12	2.0	Low	Good	Subject Property	Retain
376	White Elm	<i>Ulmus americana</i>	Native	1	18	2.0	High	Poor	Subject Property	Remove
377	Scots Pine	<i>Pinus sylvestris</i>	Non-Native	3	31	4.0	High	Dead	Subject Property	Remove
378	White Elm	<i>Ulmus americana</i>	Native	1	12	1.0	High	Dead	Subject Property	Remove
379	White Elm	<i>Ulmus americana</i>	Native	1	19	4.5	Medium	Fair	Subject Property	Retain
380	White Elm	<i>Ulmus americana</i>	Native	1	16	3.0	Medium	Fair	Subject Property	Retain
381	White Elm	<i>Ulmus americana</i>	Native	1	26	4.5	Low	Good	Subject Property	Retain
382	White Elm	<i>Ulmus americana</i>	Native	1	19	4.0	Medium	Fair	Subject Property	Retain
383	White Elm	<i>Ulmus americana</i>	Native	1	25	4.0	Low	Good	Subject Property	Retain
384	White Elm	<i>Ulmus americana</i>	Native	1	30	4.0	Medium	Fair	Subject Property	Retain
385	Norway Spruce	<i>Picea abies</i>	Non-Native	1	28	4.0	Low	Good	Subject Property	Remove
386	Norway Spruce	<i>Picea abies</i>	Non-Native	1	78	4.0	Medium	Fair	Subject Property	Remove
387	Silver Maple	<i>Acer saccharinum</i>	Native	1	36	4.5	Medium	Fair	Subject Property	Remove
388	Eastern White Cedar	<i>Thuja occidentalis</i>	Native	5	22	2.0	Medium	Fair	Subject Property	Remove
389	Black Walnut	<i>Juglans nigra</i>	Native	1	10	3.0	Medium	Fair	Subject Property	Remove
390	Butternut	<i>Juglans cinerea</i>	Native	2	12	3.0	Medium	Fair	Subject Property	Remove
391	Norway Spruce	<i>Picea abies</i>	Non-Native	1	27	3.0	Medium	Fair	Subject Property	Remove
392	Norway Spruce	<i>Picea abies</i>	Non-Native	1	44	4.0	Medium	Fair	Subject Property	Remove
393	Norway Spruce	<i>Picea abies</i>	Non-Native	1	53	4.0	Medium	Fair	Subject Property	Remove
394	White Birch	<i>Betula papyrifera</i>	Native	2	19	3.0	Medium	Fair	Subject Property	Remove
395	Norway Spruce	<i>Picea abies</i>	Non-Native	1	31	3.0	Medium	Fair	Subject Property	Remove
396	Norway Spruce	<i>Picea abies</i>	Non-Native	1	19	2.0	Medium	Fair	Subject Property	Remove
397	Norway Spruce	<i>Picea abies</i>	Non-Native	1	24	2.5	Medium	Poor	Subject Property	Remove
398	Norway Spruce	<i>Picea abies</i>	Non-Native	1	21	2.5	Medium	Fair	Subject Property	Remove
399	Freeman's Maple	<i>Acer X freemanii</i>	Native	1	30	4.0	Medium	Fair	Subject Property	Remove
400	Freeman's Maple	<i>Acer X freemanii</i>	Native	1	38	7.0	Medium	Fair	Subject Property	Remove
410	Horsechestnut	<i>Aesculus hippocastanum</i>	Non-Native	1	14	1.5	Low	Good	Subject Property	Remove
411	Norway Maple	<i>Acer platanoides</i>	Non-Native	1	19	2.0	Medium	Fair	Subject Property	Remove
412	Common Apple	<i>Malus domestica</i>	Non-Native	3	34	4.0	Medium	Poor	Subject Property	Remove
413	Norway Maple	<i>Acer platanoides</i>	Non-Native	1	49	6.0	Medium	Fair	Subject Property	Remove
414	Eastern Cottonwood	<i>Populus deltoides</i>	Native	1	22	3.5	Low	Good	Subject Property	Remove
415	Eastern White Cedar	<i>Thuja occidentalis</i>	Native	1	14	1.0	Medium	Fair	Subject Property	Remove
416	Eastern White Cedar	<i>Thuja occidentalis</i>	Native	1	13	1.5	Medium	Fair	Subject Property	Remove
417	Eastern Cottonwood	<i>Populus deltoides</i>	Native	1	26	2.0	Low	Good	Subject Property	Remove
438	Norway Maple	<i>Acer platanoides</i>	Non-Native	1	50	5.0	Medium	Fair	Subject Property	Remove
439	Norway Maple	<i>Acer platanoides</i>	Non-Native	1	59	7.0	Medium	Fair	Subject Property	Remove
440	Sugar Maple	<i>Acer saccharum ssp. saccharum</i>	Native	1	61	5.0	Medium	Fair	Subject Property	Remove
441	Freeman's Maple	<i>Acer X freemanii</i>	Native	1	37	5.0	Medium	Fair	Subject Property	Remove
442	Norway Spruce	<i>Picea abies</i>	Non-Native	1	39	5.0	Low	Fair	Subject Property	Remove
443	Norway Spruce	<i>Picea abies</i>	Non-Native	1	35	4.0	Medium	Fair	Subject Property	Remove
444	Norway Spruce	<i>Picea abies</i>	Non-Native	1	43	5.0	Low	Fair	Subject Property	Remove
445	Norway Spruce	<i>Picea abies</i>	Non-Native	1	29	4.0	Low	Good	Subject Property	Remove
446	Norway Spruce	<i>Picea abies</i>	Non-Native	1	28	4.0	Low	Good	Subject Property	Remove
447	Eastern White Cedar	<i>Thuja occidentalis</i>	Native	1	15	1.0	Medium	Fair	Subject Property	Remove
448	Eastern White Cedar	<i>Thuja occidentalis</i>	Native	1	20	1.0	Medium	Fair	Subject Property	Remove
449	Eastern White Cedar	<i>Thuja occidentalis</i>	Native	1	23	1.0	Medium	Fair	Subject Property	Remove
450	Norway Maple	<i>Acer platanoides</i>	Non-Native	1	56	6.0	Medium	Fair	Subject Property	Remove
451	Eastern White Cedar	<i>Thuja occidentalis</i>	Native	1	11	1.0	Medium	Fair	Subject Property	Remove
452	Sugar Maple	<i>Acer saccharum ssp. saccharum</i>	Native	1	47	5.0	Medium	Fair	Subject Property	Remove
453	White Birch	<i>Betula papyrifera</i>	Native	2	25	4.0	Medium	Fair	Subject Property	Remove
454	White Birch	<i>Betula papyrifera</i>	Native	1	27	5.0	Medium	Fair	Subject Property	Remove
455	Sugar Maple	<i>Acer saccharum ssp. saccharum</i>	Native	1	38	5.0	Medium	Fair	Subject Property	Remove
456	Black Walnut	<i>Juglans nigra</i>	Native	1	11	3.0	Low	Fair	Subject Property	Remove
502	Norway Spruce	<i>Picea abies</i>	Non-Native	1		4.0	Low	Fair	Boundary	Retain
503	Norway Spruce	<i>Picea abies</i>	Non-Native	1		4.0	Low	Fair	Boundary	Retain
504	Norway Spruce	<i>Picea abies</i>	Non-Native	1		4.0	Low	Fair	Boundary	Retain
506	Norway Spruce	<i>Picea abies</i>	Non-Native	1		4.0	Low	Fair	Boundary	Retain
507	Norway Spruce	<i>Picea abies</i>	Non-Native	1		4.0	Low	Fair	Boundary	Retain
508	Norway Spruce	<i>Picea abies</i>	Non-Native	1		4.0	Low	Fair	Boundary	Retain
509	Norway Spruce	<i>Picea abies</i>	Non-Native	1		4.0	Low	Fair	Boundary	Retain
510	Norway Spruce	<i>Picea abies</i>	Non-Native	1		4.0	Low	Fair	Boundary	Retain
511	Norway Spruce	<i>Picea abies</i>	Non-Native	1		4.0	Low	Fair	Boundary	Retain
512	Norway Spruce	<i>Picea abies</i>	Non-Native	1		4.0	Low	Fair	Boundary	Retain
513	Norway Spruce	<i>Picea abies</i>	Non-Native	1		4.0	Low	Fair	Boundary	Retain
514	Norway Spruce	<i>Picea abies</i>	Non-Native	1		4.0	Low	Fair	Boundary	Retain
516	Norway Spruce	<i>Picea abies</i>	Non-Native	1		4.0	Low	Fair	Boundary	Retain
517	Norway Spruce	<i>Picea abies</i>	Non-Native	1		4.0	Low	Fair	Boundary	Retain
518	Norway Spruce	<i>Picea abies</i>	Non-Native	1		4.0	Low	Fair	Boundary	Retain
519	Norway Spruce	<i>Picea abies</i>	Non-Native	1		4.0	Low	Fair	Boundary	Retain
522	Trembling Aspen	<i>Populus tremuloides</i>	Native	1		4.0	Low	Fair	Subject Property	Remove
527	Eastern Red Cedar	<i>Juniperus virginiana</i>	Native	1	13	2.0	Low	Fair	Subject Property	Remove
551	Eastern White Cedar	<i>Thuja occidentalis</i>	Native	1	25	3.0	Low	Good	Subject Property	Remove
552	Trembling Aspen	<i>Populus tremuloides</i>	Native	1	23	4.5	Low	Good	Subject Property	Remove
582	Black Walnut	<i>Juglans nigra</i>	Native	1	13	3.0	Low	Fair	Subject Property	Remove
583	Black Walnut	<i>Juglans nigra</i>	Native	1	13	3.0	Low	Fair	Subject Property	Remove
584	Black Walnut	<i>Juglans nigra</i>	Native	1	13	2.5	Low	Fair	Subject Property	Remove

1250 Gordon Street Tree Preservation Plan  
Tree Inventory Data

Tree Number	Common Name	Scientific Name	Native/ Non-native	Stem Count	DBH (cm)	Crown Radius (m)	Potential for Structural Failure Rating	Overall Condition	Location	Proposed Action
585	Eastern White Cedar	<i>Thuja occidentalis</i>	Native	1	12	2.0	Low	Fair	Subject Property	Remove
586	White Spruce	<i>Picea glauca</i>	Native	1	16	3.0	Low	Fair	Subject Property	Remove
587	White Spruce	<i>Picea glauca</i>	Native	1	15	3.0	Low	Fair	Subject Property	Remove
588	White Spruce	<i>Picea glauca</i>	Native	1	13	3.0	Low	Fair	Subject Property	Remove
589	Black Walnut	<i>Juglans nigra</i>	Native	1	11	2.0	Low	Fair	Subject Property	Remove
590	White Spruce	<i>Picea glauca</i>	Native	1	13	3.0	Low	Fair	Subject Property	Remove
591	White Spruce	<i>Picea glauca</i>	Native	1	20	3.0	Low	Fair	Subject Property	Remove
592	Black Walnut	<i>Juglans nigra</i>	Native	2	#VALUE!	3.5	Low	Fair	Subject Property	Remove
593	Black Walnut	<i>Juglans nigra</i>	Native	1	13	3.5	Low	Fair	Subject Property	Remove
594	Scots Pine	<i>Pinus sylvestris</i>	Non-Native	1	11	1.0	Medium	Fair	Subject Property	Retain
595	Black Walnut	<i>Juglans nigra</i>	Native	1	11	2.0	Low	Good	Subject Property	Remove
596	Weeping Birch	<i>Betula pendula</i>	Non-Native	1	10	2.0	Low	Good	Subject Property	Remove
597	Scots Pine	<i>Pinus sylvestris</i>	Non-Native	1	14	2.5	Low	Fair	Subject Property	Remove
599	Black Walnut	<i>Juglans nigra</i>	Native	1	18	3.0	Low	Good	Subject Property	Remove
600	Black Walnut	<i>Juglans nigra</i>	Native	1	11	2.0	Low	Good	Subject Property	Remove
601	Scots Pine	<i>Pinus sylvestris</i>	Non-Native	1	12	2.0	Low	Fair	Subject Property	Remove
602	Scots Pine	<i>Pinus sylvestris</i>	Non-Native	1	13	2.0	Low	Fair	Subject Property	Remove
603	Scots Pine	<i>Pinus sylvestris</i>	Non-Native	1	14	2.5	Low	Fair	Subject Property	Remove
613	Black Walnut	<i>Juglans nigra</i>	Native	1	16	3.0	Low	Fair	Subject Property	Remove
617	Scots Pine	<i>Pinus sylvestris</i>	Non-Native	1	11	2.5	Low	Good	Subject Property	Remove
619	Elm Species	<i>Ulmus sp.</i>	Native	1	10	2.0	Low	Good	Subject Property	Remove
620	Black Walnut	<i>Juglans nigra</i>	Native	1	10	3.0	Low	Good	Subject Property	Remove
622	Eastern White Cedar	<i>Thuja occidentalis</i>	Native	1	10	2.0	Low	Good	Subject Property	Remove
624	Eastern White Cedar	<i>Thuja occidentalis</i>	Native	1	10	2.0	Low	Good	Subject Property	Remove
708	Black Walnut	<i>Juglans nigra</i>	Native	1	19	4.0	Low	Good	Subject Property	Remove
709	Norway Maple	<i>Acer platanoides</i>	Non-Native	1	16	4.0	Low	Fair	Subject Property	Remove
710	Black Walnut	<i>Juglans nigra</i>	Native	1	12		High	Dead	Boundary	Remove
712	Black Walnut	<i>Juglans nigra</i>	Native	1	14	4.0	Low	Good	Subject Property	Remove
713	Black Walnut	<i>Juglans nigra</i>	Native	1	13	3.5	Low	Good	Subject Property	Remove
714	Black Walnut	<i>Juglans nigra</i>	Native	1	12	2.5	Low	Good	Subject Property	Remove
715	Black Walnut	<i>Juglans nigra</i>	Native	1	12	2.0	Low	Good	Subject Property	Remove
915	Hawthorn Species	<i>Crataegus sp.</i>	Native	1	12	1.0	Medium	Poor	Subject Property	Remove
916	Butternut	<i>Juglans cinerea</i>	Native	1	17	1.0	Medium	Poor	Subject Property	Retain
917	Hawthorn Species	<i>Crataegus sp.</i>	Native	2	12	1.5	Medium	Poor	Subject Property	Retain
918	Butternut	<i>Juglans cinerea</i>	Native	1	13	1.0	Medium	Fair	Subject Property	Retain
919	Black Cherry	<i>Prunus serotina</i>	Native	7	18	2.0	Medium	Poor	Subject Property	Retain
943	Norway Spruce	<i>Picea abies</i>	Non-Native	1	16	2.5	Medium	Fair	Subject Property	Retain
944	Norway Spruce	<i>Picea abies</i>	Non-Native	1	15	2.0	Low	Fair	Subject Property	Retain
945	Norway Spruce	<i>Picea abies</i>	Non-Native	1	14	2.0	Low	Fair	Subject Property	Retain
989	Scots Pine	<i>Pinus sylvestris</i>	Non-Native	1	15	2.0	Low	Good	Subject Property	Retain
990	Scots Pine	<i>Pinus sylvestris</i>	Non-Native	1	13	2.0	Low	Good	Subject Property	Retain
1146	Scots Pine	<i>Pinus sylvestris</i>	Non-Native	1	16	2.0	Medium	Fair	Subject Property	Retain
1401	Eastern White Cedar	<i>Thuja occidentalis</i>	Native	1	19	3.0	Low	Good	Subject Property	Retain
1402	Scots Pine	<i>Pinus sylvestris</i>	Non-Native	1	15	2.0	Medium	Fair	Subject Property	Retain
1416	White Ash	<i>Fraxinus americana</i>	Native	1	20	2.5	High	Poor	Subject Property	Retain
1417	Black Walnut	<i>Juglans nigra</i>	Native	1	20	4.0	Medium	Fair	Subject Property	Retain
1418	Black Walnut	<i>Juglans nigra</i>	Native	1	19	3.0	Medium	Fair	Subject Property	Retain
1419	Black Walnut	<i>Juglans nigra</i>	Native	1	23	4.0	High	Poor	Subject Property	Retain
1420	Black Walnut	<i>Juglans nigra</i>	Native	1	31	5.0	Medium	Fair	Subject Property	Retain
1442	Black Walnut	<i>Juglans nigra</i>	Native	1	33	5.0	Medium	Poor	Subject Property	Retain
1443	Black Walnut	<i>Juglans nigra</i>	Native	1	36	5.0	Medium	Poor	Subject Property	Retain
1444	Black Walnut	<i>Juglans nigra</i>	Native	1	35	5.0	Medium	Poor	Subject Property	Retain
1455	Norway Spruce	<i>Picea abies</i>	Non-Native	1	36	1.0	Medium	Fair	Subject Property	Retain
1480	Norway Spruce	<i>Picea abies</i>	Non-Native	1	17		High	Dead	Subject Property	Retain
1481	Norway Spruce	<i>Picea abies</i>	Non-Native	1	21		High	Dead	Subject Property	Retain
1482	Norway Spruce	<i>Picea abies</i>	Non-Native	1	19	0.5	High	Very Poor	Subject Property	Retain
1552	Scots Pine	<i>Pinus sylvestris</i>	Non-Native	1	13		High	Dead	Subject Property	Retain
1553	Scots Pine	<i>Pinus sylvestris</i>	Non-Native	1	12	1.0	Medium	Fair	Subject Property	Retain
1555	Eastern White Cedar	<i>Thuja occidentalis</i>	Native	1	11	1.5	Low	Fair	Subject Property	Retain
1579	Scots Pine	<i>Pinus sylvestris</i>	Non-Native	1	11	1.0	High	Poor	Subject Property	Retain
1583	Scots Pine	<i>Pinus sylvestris</i>	Non-Native	1	13	1.0	Medium	Fair	Subject Property	Retain
1584	Scots Pine	<i>Pinus sylvestris</i>	Non-Native	1	12	1.0	Medium	Fair	Subject Property	Retain
A	Freeman's Maple	<i>Acer X freemanii</i>	Native	1	75	7.0	Medium	Fair	Subject Property	Remove
A	Eastern White Cedar	<i>Thuja occidentalis</i>	Native	1	16	1.0	Low	Fair	Subject Property	Remove
B	Eastern Cottonwood	<i>Populus deltoides</i>	Native	1	17	2.0	Low	Good	Subject Property	Remove
C	Black Walnut	<i>Juglans nigra</i>	Native	1	12	0.5	Low	Good	Subject Property	Retain
D	Butternut	<i>Juglans cinerea</i>	Native	1	20	4.0	Medium	Fair	Subject Property	Remove
E	Sugar Maple	<i>Acer saccharum ssp. saccharum</i>	Native	1	30	3.0	Low	Good	Subject Property	Retain
F	Sugar Maple	<i>Acer saccharum ssp. saccharum</i>	Native	1	45	4.0	High	Poor	Off-Property	Retain
G	Norway Spruce	<i>Picea abies</i>	Non-Native	1	45	5.0	Medium	Fair	Subject Property	Remove
I	Sugar Maple	<i>Acer saccharum ssp. saccharum</i>	Native	1	45	3.0	High	Poor	Subject Property	Retain
Polygon A	Norway Spruce	<i>Picea abies</i>	Non-Native	1	30	2.0	Low	Good	Subject Property	Remove
Polygon B	Eastern White Cedar	<i>Thuja occidentalis</i>	Native	1	16	1.0	Low	Fair	Subject Property	Remove
Polygon C	Eastern White Cedar	<i>Thuja occidentalis</i>	Native	1	18	2.0	Medium	Fair	Subject Property	Remove
Polygon D	Norway Spruce	<i>Picea abies</i>	Non-Native	5	34	4.0	Medium	Fair	Subject Property	Remove
Polygon E	Freeman's Maple	<i>Acer X freemanii</i>	Native	1	32	4.0	Medium	Fair	Subject Property	Remove
Polygon F	Norway Spruce	<i>Picea abies</i>	Non-Native	1	30	3.0	Low	Good	Subject Property	Remove

Appendix II  
Tree Health and Potential for Structural Failure Assessment Criteria

---

## Tree Health Assessment Criteria

Assessment Criteria	Definition <sup>1</sup>
Excellent	Represents a tree in near perfect form, health, and vigour. This tree would exhibit no deadwood, no decline, and no visible defects.
Good	Represents a tree ranging from a generally healthy tree to a near perfect tree in terms of health, vigour and structure. This tree exhibits a complete, balanced crown structure with little to no deadwood and minimal defects as well as a properly formed root flare.
Fair	Represents a tree with minor health, balance or structural issues with minimal to moderate deadwood. Branching structure shows signs of included bark or minor rot within the branch connections or trunk wood. The root flare shows minimal signs of mechanical injury, decay, poor callusing, or girdling roots. Trees in the category require minor remedial actions to improve the vigour and structure of the tree.
Poor	Represents a tree that exhibits a poor vigour, reduced crown size (<30% of crown typical of species caused by overcrowding or decline), extreme crown imbalance, or extensive rot in the branching and trunk wood. Fungus could be seen from these rotting areas, suggesting further decay. These trees have extensive crown die back with a large amount of deadwood, and possibly dead sections. These weakened areas can lead to a potential failure of tree sections. Rooting zones show signs of extensive root decay or damage (fruiting bodies or mechanical damage) or girdling roots. Trees in this category require more extensive actions to prevent failure. A tree identified as poor would be a candidate for removal in the near future.
Very Poor	Represents a tree that exhibits major health and structural defects. Quite often the defects or diseases affecting this tree will be fatal. Large quantities of fungus, large dead sections with possible cavities and bark falling off all are signs that a tree is in a major state of decline and would be identified as very poor. These trees have a probable or imminent potential for structural failure. These trees should be identified for removal.
Dead	Represents a tree that exhibits no sign of new growth, including buds, foliage, or shoot growth. These trees have a probable or imminent potential for structural failure. These trees should be identified for removal.

<sup>1</sup> (Dunster 2009)

## Potential for Structural Failure Assessment Criteria

Assessment Criteria*	Definition <sup>1</sup>
Improbable	The tree or branch is not likely to fail during normal weather conditions and may not fail in many severe weather conditions within the specified time frame.
Possible	Failure could occur, but it is unlikely during normal weather conditions within the specified time frame.
Probable	Failure may be expected under normal weather conditions within the specified time frame.
Imminent	Failure has started or is most likely to occur in the near future, even if there is no significant wind or increased load. This is a rare occurrence for an assessor to encounter, and it may require immediate action to protect people from harm.
*A specified time frame of 1 year will be used when assessing potential for structural failure.	

<sup>1</sup> (Dunster et al. 2013)

Appendix III  
Conditions of Assessment

---

## **Conditions of Tree Assessment**

### *Limitations*

This tree inventory and assessment is based on the circumstances and observations by Natural Resource Solutions Inc. (NRSI) as they existed at the time of the site inspection(s) of the Client's Property as described in this report (the "Property") and the trees situated thereon, and upon information provided by the Client to NRSI. The opinions in this assessment are given based on observations made and using generally accepted professional judgment, however, because trees are living organisms and subject to change, damage and disease, the results, observations, recommendations, and analysis as set out in this assessment are valid only at the date any such observations and analysis took place. No guarantee, warranty, representation or opinion is offered or made by NRSI as to the length of the validity of the results, observations, recommendations and analysis contained within this assessment. As a result, the Client shall not rely upon this assessment, save and except for representing the circumstances and observations at the date of site inspection(s), and the analysis and recommendations made in relation to the proposed undertaking. It is recommended that the inventoried trees discussed in this assessment should be re-assessed periodically, where required.

### *Further Services*

Neither NRSI, nor any assessor employed or retained by NRSI (the "Assessor") for the purpose of preparing or assisting in the preparation of this assessment shall be required to provide any further consultation or services to the Client including, without limitation, acting as an expert witness or witness in any court in any jurisdiction unless the Client has first made specific arrangements with respect to such further services, including providing payment of the Assessor's regular hourly billing fees.

NRSI accepts no responsibility for the implementation of all or any part of this report, unless specifically requested to examine the implementation of such activities recommended herein. Any request for the inspection or supervision of all or part of the implementation shall be made in writing and the details agreed to in writing by both parties.



### *Assumptions*

The Client is hereby notified that where any of the information set out and referenced in this assessment are based on assumptions, facts or information provided to NRSI, NRSI will in no way be responsible for the veracity or accuracy of any such information. Further, the Client acknowledges and agrees that NRSI has, for the purposes of preparing their assessment, assumed that the Property is in full compliance with all applicable federal, provincial, municipal and local statutes, regulations, by-laws, guidelines and other related laws. NRSI explicitly denies any legal liability for any and all issues with respect to non-compliance with any of the above-referenced statutes, regulations, by-laws, guidelines and laws as it may pertain to or affect the Property.

### *Restriction of Assessment*

The assessment carried out was restricted to the areas as described in this report. NRSI is not legally liable for any other trees except those expressly discussed herein. The conclusions of this assessment do not apply to any areas, trees, or any other property not covered or referenced in this assessment.

### *Professional Responsibility*

In carrying out this assessment, NRSI and any Assessor appointed for and on behalf of NRSI to perform and carry out the assessment has exercised a reasonable standard of care, skill and diligence. The assessment has been made using accepted arboricultural techniques. These include a visual examination of each tree for structural defects, scars, external indications of decay such as fungal fruiting bodies, evidence of insect attack, discolored foliage (during the leaf-on period), the condition of any visible root structures, the degree and direction of lean (if any), the general condition of the tree(s) and the surrounding site, and the current or planned proximity of property and people. Except where specifically noted in the assessment, none of the trees examined on the property were dissected, cored, probed, or climbed, and detailed root crown examinations involving excavation were not undertaken.

No guarantees are offered, or implied, that trees recommended for retention, or all parts of them, will remain standing. It is professionally impossible to predict with absolute certainty the behaviour of any single tree or group of trees, or all their component parts, in all given circumstances. Inevitably, a standing tree will always pose some risk. Most

trees have the potential to fall, lean, or otherwise pose a danger to property and persons in the event of extreme weather conditions, and this risk can only be eliminated if the tree is removed.

Without limiting the foregoing, no liability is assumed by NRSI or its directors, officers, employers, contractors, agents or Assessors for:

- a) any legal description provided with respect to the Property;
- b) issues of title and/or ownership with respect to the Property;
- c) the accuracy of the Property line locations or boundaries with respect to the Property; and
- d) the accuracy of any other information provided to NRSI by the Client or third parties;
- e) any consequential loss, injury or damages suffered by the Client or any third parties, including but not limited to replacement costs, loss of use, earnings and business interruption; and
- f) the unauthorized distribution of the assessment.

### *Third Party Liability*

This assessment was prepared by NRSI for the Client. The data collected reflect NRSI's best assessment of the inventoried trees situated on the Property with the information available at the time of observation. Data analysis and the assessment of potential impacts to inventoried trees is specific to the proposed undertaking as described in this report. NRSI accepts no responsibility for any damages or loss suffered by any third party or by the Client as a result of decisions made or actions based upon the use of this assessment for purposes unrelated to the proposed undertaking.

### *General*

Any plans and/or illustrations in this assessment are included only to help the Client visualize the issues in this assessment and shall not be relied upon for any other purpose.

This report shall be considered as a whole, no sections are severable, and the assessment shall be considered incomplete if any pages are missing.



Appendix IV  
Tree Data and Summary Tables

---

### Tree Inventory Data Summarized by Species

Common Name	Scientific Name	Excellent	Good	Fair	Poor	Very Poor	Dead	Grand Total
<b>Native</b>		<b>1</b>	<b>47</b>	<b>355</b>	<b>53</b>	<b>3</b>	<b>16</b>	<b>475</b>
American Basswood	<i>Tilia americana</i>			2				2
Balsam Fir	<i>Abies balsamea</i>		1					1
Black Cherry	<i>Prunus serotina</i>			1	2	1	1	5
Black Maple	<i>Acer saccharum ssp. nigrum</i>				5			5
Black Walnut	<i>Juglans nigra</i>		19	26	9		3	57
Butternut	<i>Juglans cinerea</i>			5	1			6
Eastern Cottonwood	<i>Populus deltoides</i>		3					3
Eastern Red Cedar	<i>Juniperus virginiana</i>			2				2
Eastern White Cedar	<i>Thuja occidentalis</i>		7	248	19		2	276
Elm Species	<i>Ulmus sp.</i>		1					1
Freeman's Maple	<i>Acer X freemanii</i>			15				15
Green Ash	<i>Fraxinus pennsylvanica</i>		2	1	1			4
Hawthorn species	<i>Crataegus sp.</i>			2	4			6
Honey Locust	<i>Gleditsia triacanthos</i>			3				3
Manitoba Maple	<i>Acer negundo</i>			1	3			4
Red Maple	<i>Acer rubrum</i>						1	1
Red Oak	<i>Quercus rubra</i>		1	8		1		10
Silver Maple	<i>Acer saccharinum</i>			1				1
Sugar Maple	<i>Acer saccharum ssp. saccharum</i>		2	11	4			17
Tamarack	<i>Larix laricina</i>			1				1
Trembling Aspen	<i>Populus tremuloides</i>		1	1				2
White Ash	<i>Fraxinus americana</i>		1		1			2
White Birch	<i>Betula papyrifera</i>			3				3
White Elm	<i>Ulmus americana</i>		8	17	4	1	9	39
White Spruce	<i>Picea glauca</i>	1	1	7				9
<b>Non-Native</b>		<b>5</b>	<b>89</b>	<b>100</b>	<b>26</b>	<b>2</b>	<b>10</b>	<b>232</b>
Colorado Spruce	<i>Picea pungens</i>	1					1	2
Common Apple	<i>Malus domestica</i>			2	6			8
Common Pear	<i>Pyrus communis</i>				3	1		4

Common Name	Scientific Name	Excellent	Good	Fair	Poor	Very Poor	Dead	Grand Total
Crack Willow	<i>Salix fragilis</i>				1			1
European Weeping Birch	<i>Betula pendula</i>			1				1
Fir species	<i>Abies sp.</i>			1				1
Horsechestnut	<i>Aesculus hippocastanum</i>		1					1
Linden	<i>Tilia sp.</i>			5				5
Norway Maple	<i>Acer platanoides</i>			10	2			12
Norway Spruce	<i>Picea abies</i>	4	71	62	10	1	6	154
Pine Species	<i>Pinus sp.</i>			1				1
Scots Pine	<i>Pinus sylvestris</i>		16	17	4		3	40
Siberian Elm	<i>Ulmus pumila</i>			1				1
Weeping Birch	<i>Betula sp.</i>		1					1
<b>Grand Total</b>		<b>6</b>	<b>136</b>	<b>455</b>	<b>79</b>	<b>5</b>	<b>26</b>	<b>707</b>

### Summary of Health and Risk Assessment

Potential for Structural Failure Rating	Overall Condition						Total
	Excellent	Good	Fair	Poor	Very Poor	Dead	
Low	6	134	255				395
Medium		2	198	18			218
High			2	61	5	26	94
Total	6	136	455	79	5	26	707

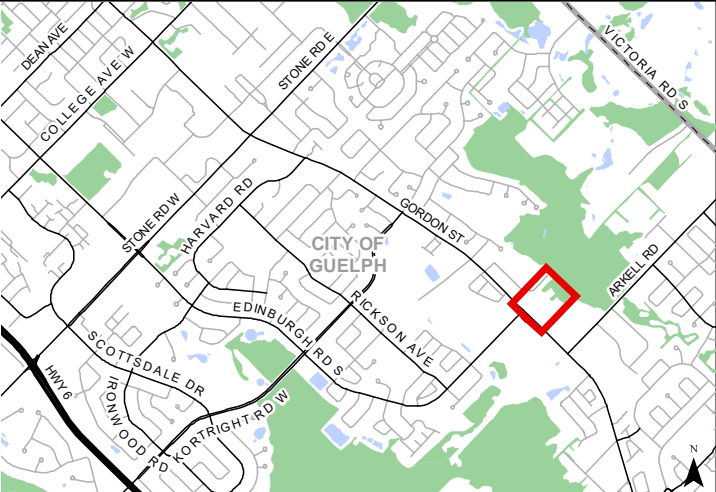
## **Maps**

**Map 1. Study Area and Natural Features**

**Map 2. Tree Inventory and Protection Plan**



# 1250 Gordon Street Subject Property

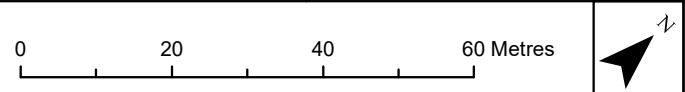


- Legend**
- Subject Property
  - Parcel Boundary
  - Significant Woodland Boundary - City of Guelph (October 2014 and July 2017)
  - Significant Woodland 10m Setback
  - Provincially Significant Wetland (PSW)



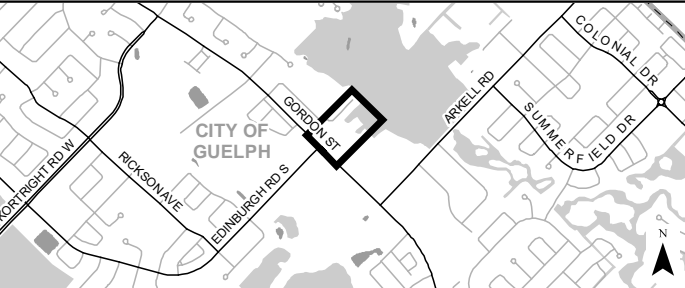
Map Produced by Natural Resource Solutions Inc. This map is proprietary and confidential and must not be duplicated or distributed by any means without express written permission of NRSI. Data provided by MNRFO Copyright: Queen's Printer Ontario. Imagery: First Base Solutions (2019).

Project: 2347 Date: March 18, 2020	NAD83 - UTM Zone 17 Size: 11x17" 1:1,000
---------------------------------------	--





1250 Gordon Street  
Tree Inventory and Preservation Plan



- Legend**
- Subject Property
  - Significant Woodland (To be Retained)
  - Significant Woodland Boundary - City of Guelph (October 2014 and July 2017)
  - Significant Woodland 10m Setback
  - Site Plan
  - Existing Conditions
  - Tree Protection Fencing
  - Inventoried Tree to be Retained (Crown to Scale)
  - Retain & Prune
  - Inventoried Tree to be Removed (Crown to Scale)
  - Hedgerow to be Removed

**NATURAL RESOURCE SOLUTIONS INC.**  
Aquatic, Terrestrial and Wetland Biologists

Map Produced by Natural Resource Solutions Inc. This map is proprietary and confidential and must not be duplicated or distributed by any means without express written permission of NRSI. Data provided by MNRFC Copyright, Queen's Printer Ontario.

Project: 2347 Date: March 27, 2020	NAD83 - UTM Zone 17 Scale: 1:350
---------------------------------------	-------------------------------------

0 5 10 15 20 Meters

