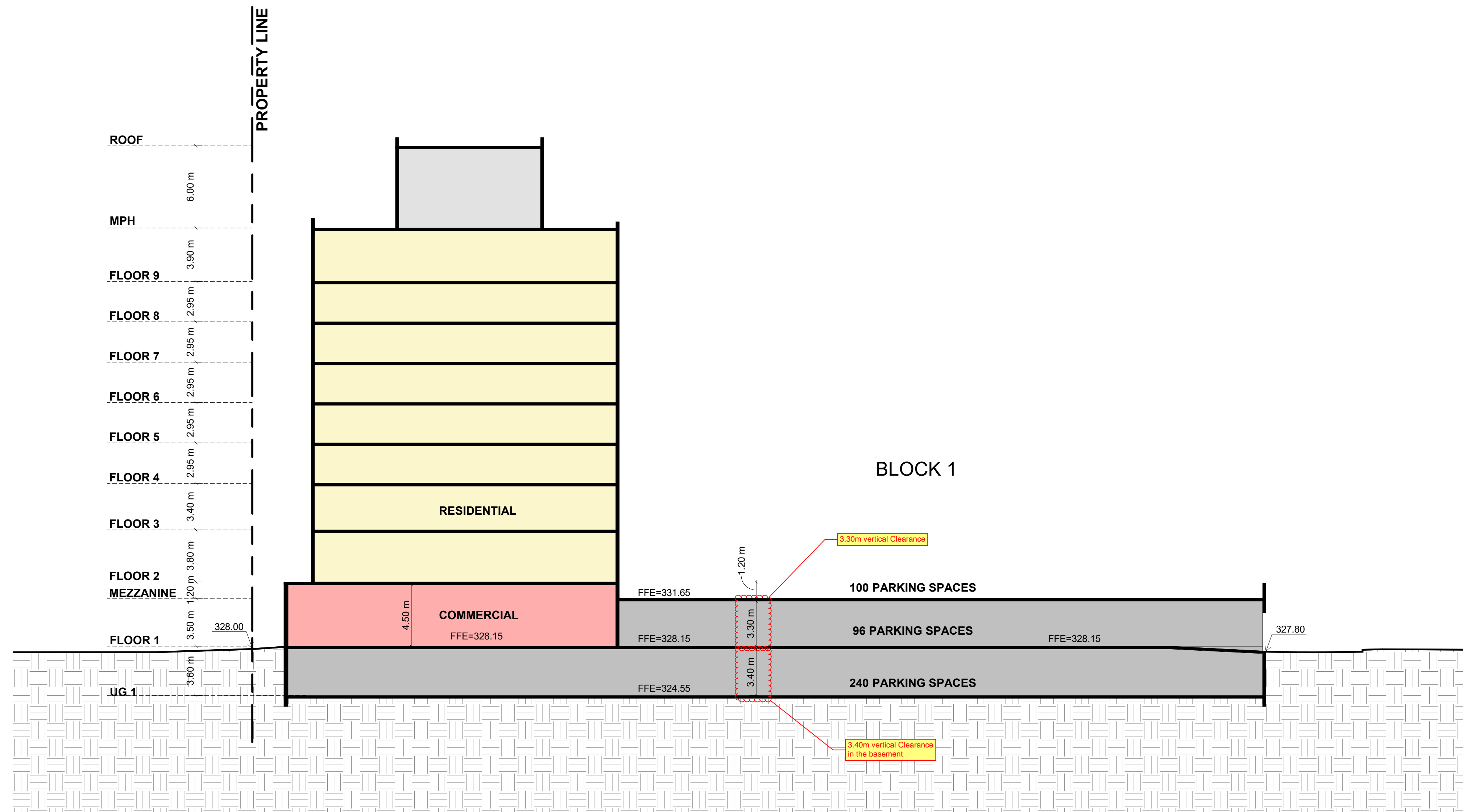


This drawing, as an instrument of service, is provided by and is the property of Turner Fleischer Architects Inc. The contractor must verify and accept responsibility for all dimensions and conditions on site and must notify Turner Fleischer Architects Inc. of any variations from the supplied information. This drawing is not to be scaled. The architect is not responsible for the accuracy of survey, structural, mechanical, electrical, etc. information shown on this drawing. Refer to the appropriate consultant drawings before proceeding with the work. Contractor must conform to all applicable codes and requirements of all relevant having jurisdiction. The contractor working from drawings not specifically marked for Contractor must assume full responsibility and bear costs for any corrections or damages resulting from his work.



**1** BLOCK 1 SCHEMATIC SECTION  
RZ401 1:200

3	2025-07-14	ISSUED FOR REZONING SUBMISSION 3	JAAF
2	2024-09-13	ISSUED FOR REZONING SUBMISSION 2	JAAF
1	2023-11-03	ISSUED FOR REZONING SUBMISSION 1	JAAF
#	DATE	DESCRIPTION	BY

## TERCOT

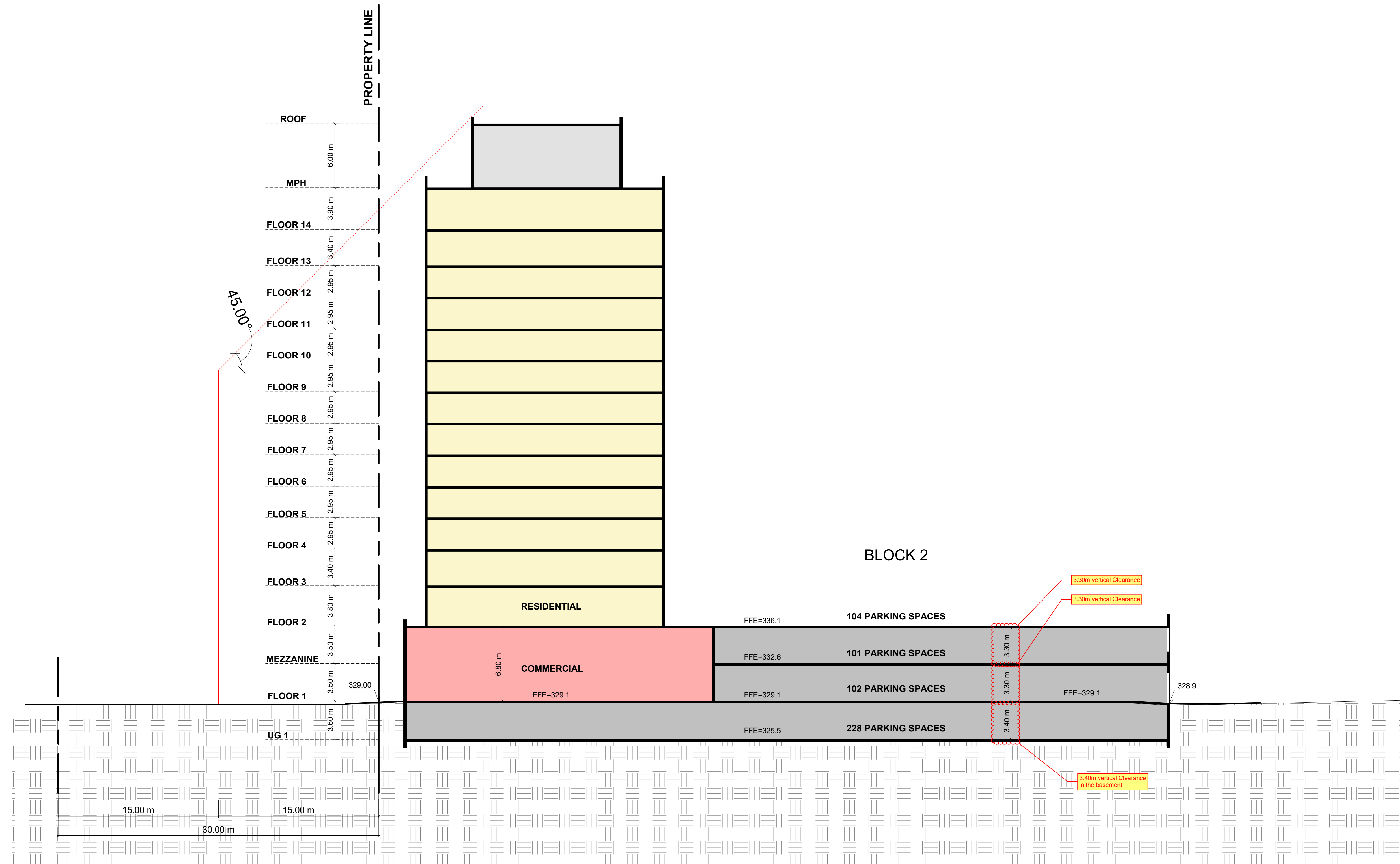
COMMUNITIES

**PROJECT**  
**Guelph Watson Holdings Inc.**  
115 WATSON PARKWAY, GUELPH, ON

**DRAWING**  
**BUILDING SECTIONS**

PROJECT NO.	22.028FS
PROJECT DATE	2025-07-14
DRAWN BY	VVA
CHECKED BY	RF
SCALE	1:200

DRAWING NO.	REV.
RZ401	3



1 BLOCK 2 SCHEMATIC SECTION  
RZ402 1: 200

3	2025-07-14	ISSUED FOR REZONING SUBMISSION 3	JAAF
2	2024-09-13	ISSUED FOR REZONING SUBMISSION 2	JAAF
1	2023-11-03	ISSUED FOR REZONING SUBMISSION 1	JAAF
#	DATE	DESCRIPTION	BY

## TERCOT COMMUNITIES

PROJECT  
**Guelph Watson Holdings Inc.**  
115 WATSON PARKWAY, GUELPH, ON

### BUILDING SECTIONS

PROJECT NO.	22.028FS
PROJECT DATE	2025-07-14
DRAWN BY	VVA
CHECKED BY	RF
SCALE	1 : 200

DRAWING NO.	RZ402	REV.	3
-------------	-------	------	---