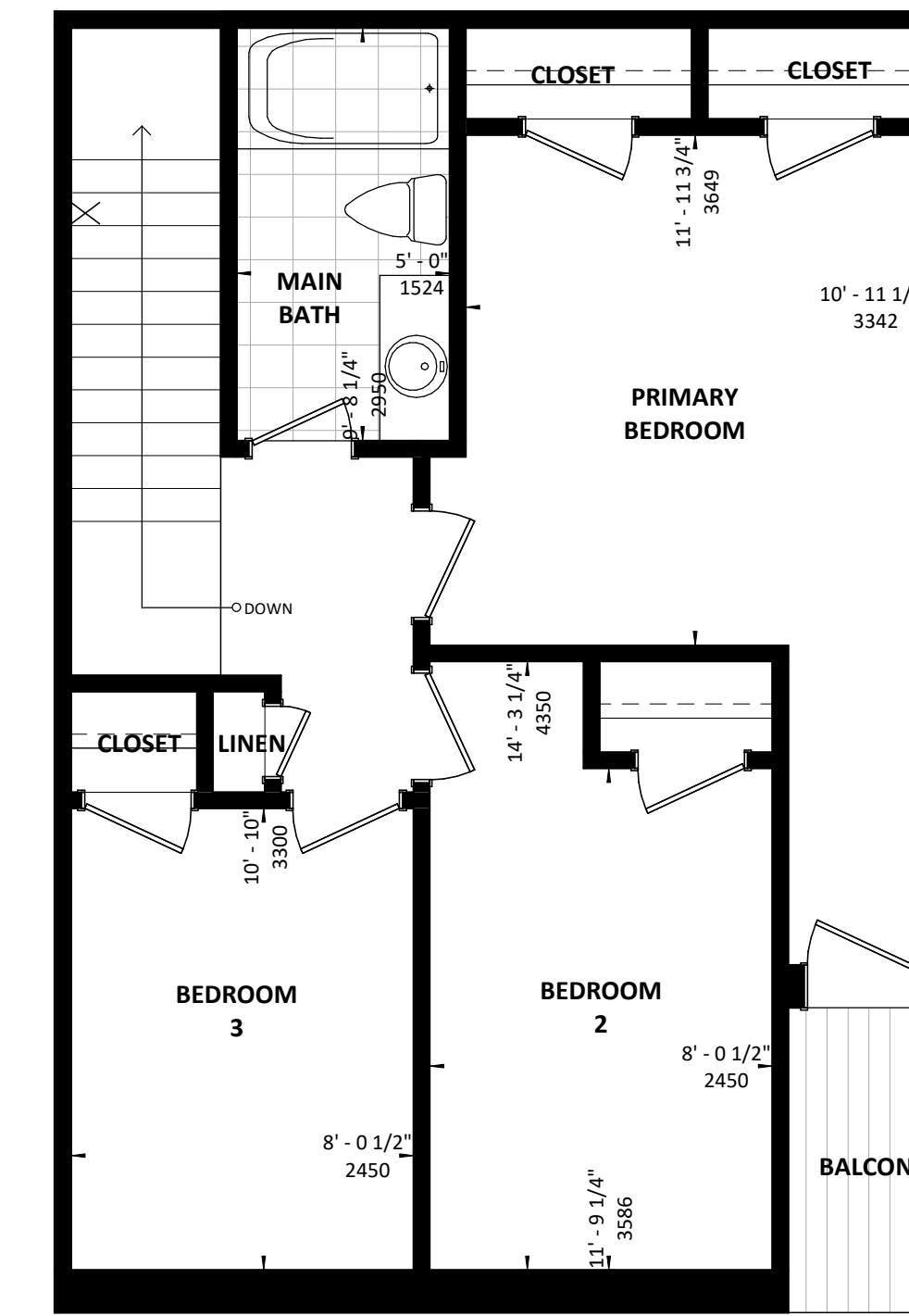
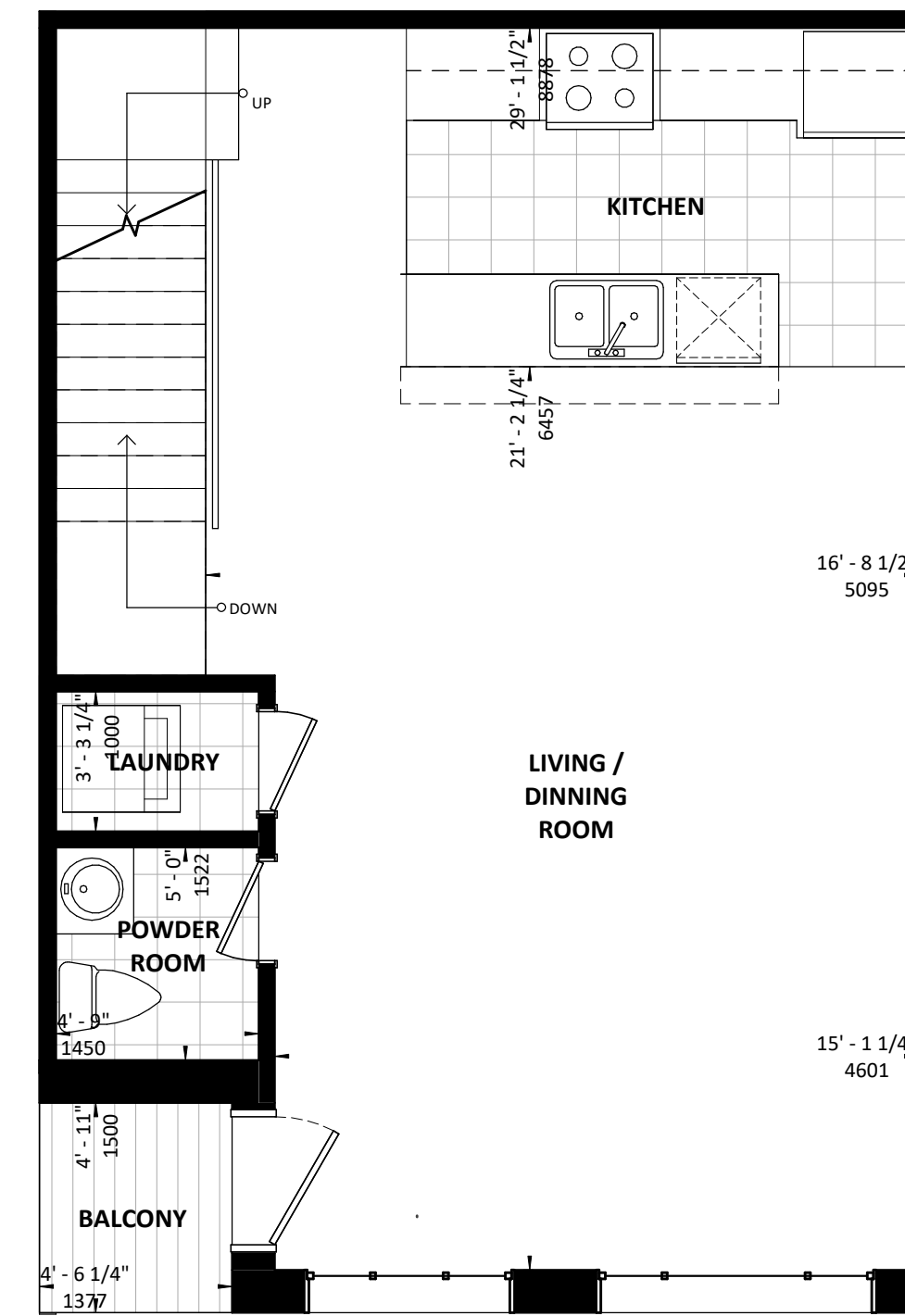
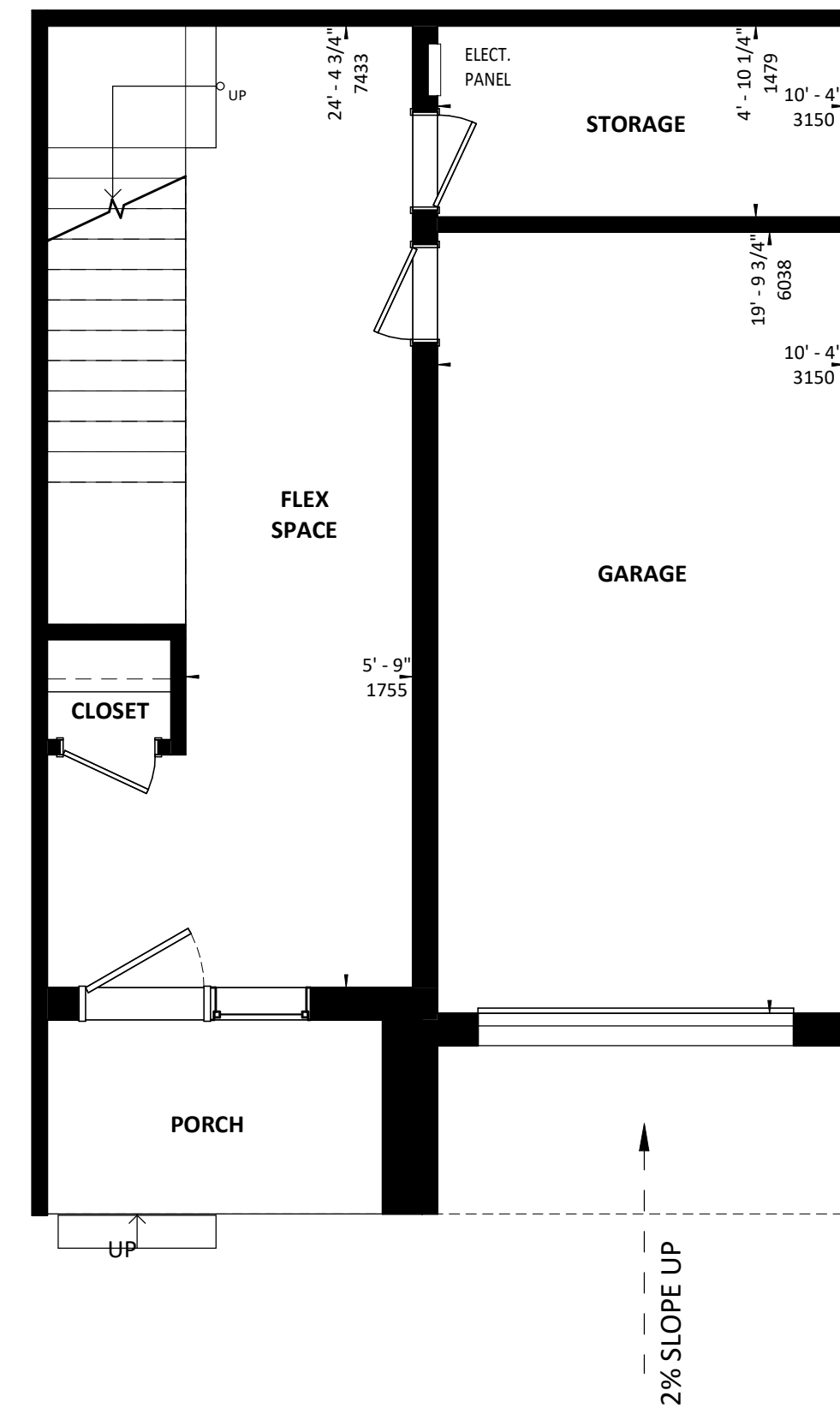
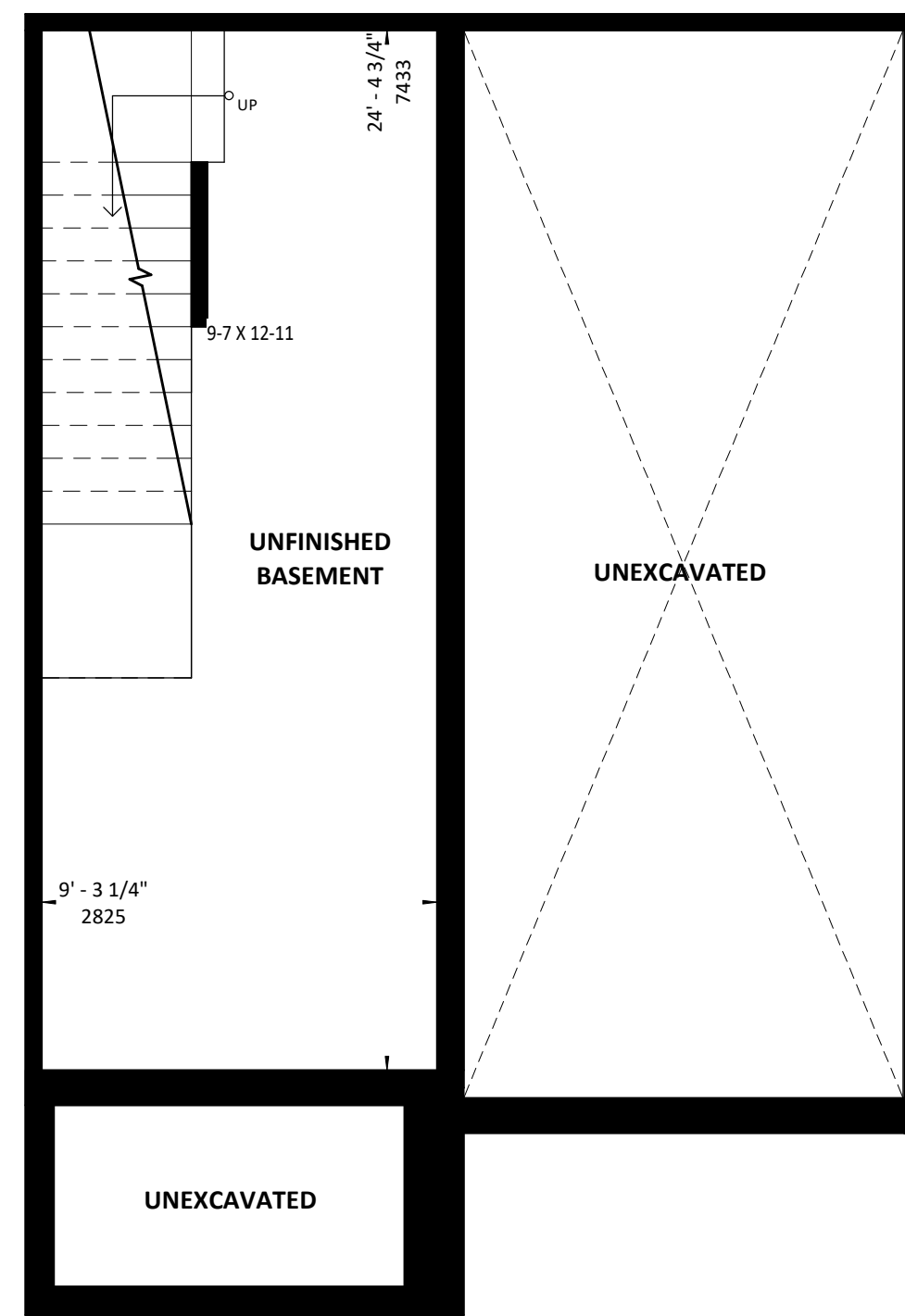


# TYPE A OPTION 2

This drawing, as an instrument of service, is provided by and is the property of Turner Fleischer Architects Inc. The contractor must verify and accept responsibility for all dimensions and conditions on site and must notify Turner Fleischer Architects Inc. of any variations from the supplied information. This drawing is not to be scaled. The architect is not responsible for the accuracy of survey, structural, mechanical, electrical, etc., information shown on this drawing. Refer to the appropriate consultant's drawings before proceeding with the work. Construction must conform to all applicable codes and requirements of authority having jurisdiction. The contractor working from drawings not specifically marked 'For Construction' must assume full responsibility and bear costs for any corrections or damages resulting from his work.



5 MIDDLE UNIT - BASEMENT  
1 : 50

1 MIDDLE UNIT - GROUND FLOOR  
1 : 50

2 MIDDLE UNIT - 2ND FLOOR  
1 : 50

3 MIDDLE UNIT - 3RD FLOOR  
1 : 50

RESIDENTIAL - 263 SQ. FT.

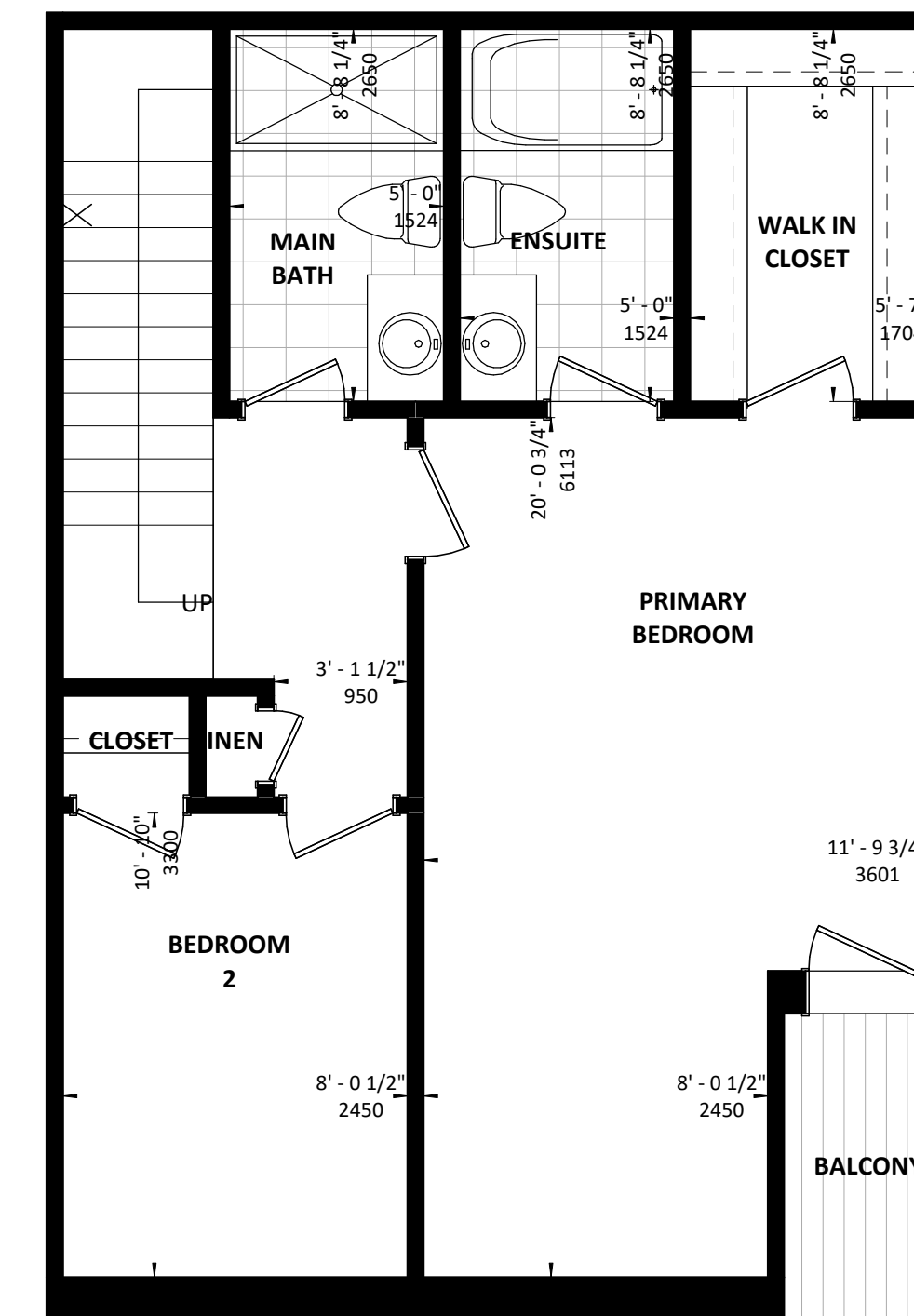
RESIDENTIAL - 323 SQ. FT.

RESIDENTIAL - 618 SQ. FT.

RESIDENTIAL - 613 SQ. FT.

TOTAL AREA RESIDENTIAL - 1,817 SQ. FT.

TOTAL FLOOR AREA - 2,039 SQ. FT.



RESIDENTIAL - 613 SQ. FT.

4 MIDDLE UNIT - 3RD FLOOR OPTION2  
1 : 50

Plans and specifications are subject to change without notice. Actual floor space may vary from stated floor area. Square footage may include open to above and could vary between layouts and elevations. Illustrations are artists concept only and may show optional features not included in base price. See a sales representative for further details. E. & O.E.

#	DATE	DESCRIPTION	BY
PROJECT			
Starwood Dr + Watson Rd North, Guelph, ON 115 WATSON PARKWAY			
DRAWING			
TYPE A - MIDDLE UNIT OPTION 2			
PROJECT NO.	22.028FS		
PROJECT DATE	2023-04-20		
DRAWN BY	MZH		
CHECKED BY	AYU		
SCALE	1 : 50		
DRAWING NO.	A200.2		



