

PAVEMENT MARKINGS LEGEND

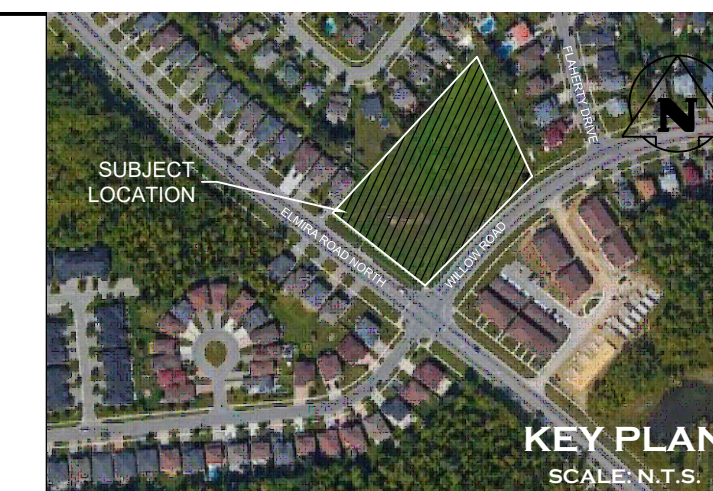
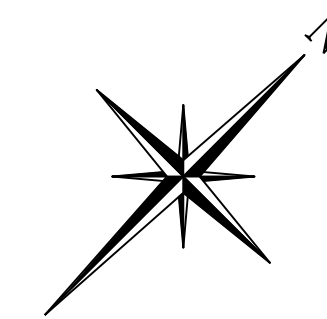
1	SOLID YELLOW, 10cm
14	SOLID WHITE, 45cm
20	SYMBOLS
]	[LIMITS OF MARKINGS

NOTES:

1. 111, 333, 363, DENOTES PAVEMENT MARKING SPACING
(IE., 3m LINE, 3m GAP, 3m LINE)
2. USE (X) TO DENOTE PAVEMENT MARKING
3. USE (X) TO DENOTE DURABLE PAVEMENT MARKING

NOTES:

1. 111, 333, 363, DENOTES PAVEMENT MARKING SPACING
(I.E., 3m LINE, 3m GAP, 3m LINE)
2. USE (X) TO DENOTE PAVEMENT MARKING
3. USE (X) TO DENOTE DURABLE PAVEMENT MARKING



NOTES:

1. THIS DRAWING IS THE EXCLUSIVE PROPERTY OF C.F. CROZIER & ASSOCIATES INC. AND THE REPRODUCTION OF ANY PART WITHOUT PRIOR WRITTEN CONSENT OF THIS OFFICE IS STRICTLY PROHIBITED.
2. THE CONTRACTOR SHALL VERIFY ALL DIMENSIONS, LEVELS, AND DATUMS ON SITE AND REPORT ANY DISCREPANCIES OR OMISSIONS TO THIS OFFICE PRIOR TO CONSTRUCTION.
3. THIS DRAWING IS TO BE READ AND UNDERSTOOD IN CONJUNCTION WITH ALL OTHER PLANS AND DOCUMENTS APPLICABLE TO THIS PROJECT.
4. ALL EXISTING UNDERGROUND UTILITIES TO BE VERIFIED IN THE FIELD BY THE CONTRACTOR PRIOR TO CONSTRUCTION.

DRAWING NOTES:

1. PAVEMENT MARKINGS TO BE COMPLETED IN ACCORDANCE WITH ONTARIO TRAFFIC MANUAL (OTM) BOOK 11 (PAVEMENT, HAZARDS AND DELINEATION MARKING).
2. SIGNAGE SHALL ADHERE TO ONTARIO TRAFFIC MANUAL (OTM) BOOK 5 (REGULATORY SIGNS), BOOK 6 (WARNING SIGNS), AND BOOK 15 (PEDESTRIAN CROSSING TREATMENTS).
3. SETBACK BETWEEN CROSSWALK AND STOP BAR TO BE 1.00m, WHERE APPLICABLE.

[illegible]

Engineer

Engineer

	Project
--	---------

105 ELMIRA ROAD NORTH
CITY OF GUELPH

Drawing

PAVEMENT MARKINGS AND SIGNAGE PLAN



2800 HIGH POINT DRIVE
SUITE 100
MILTON, ON L9T 6P4
905-875-0026 T
905-875-4915 F
WWW.CFCROZIER.CA

Drawn By	N.F./I.M.	Design By	N.F.	Project	2764-725
Check By	S.R.S.	Check By	S.R.S.	Scale 1:250	Drawing PMSE