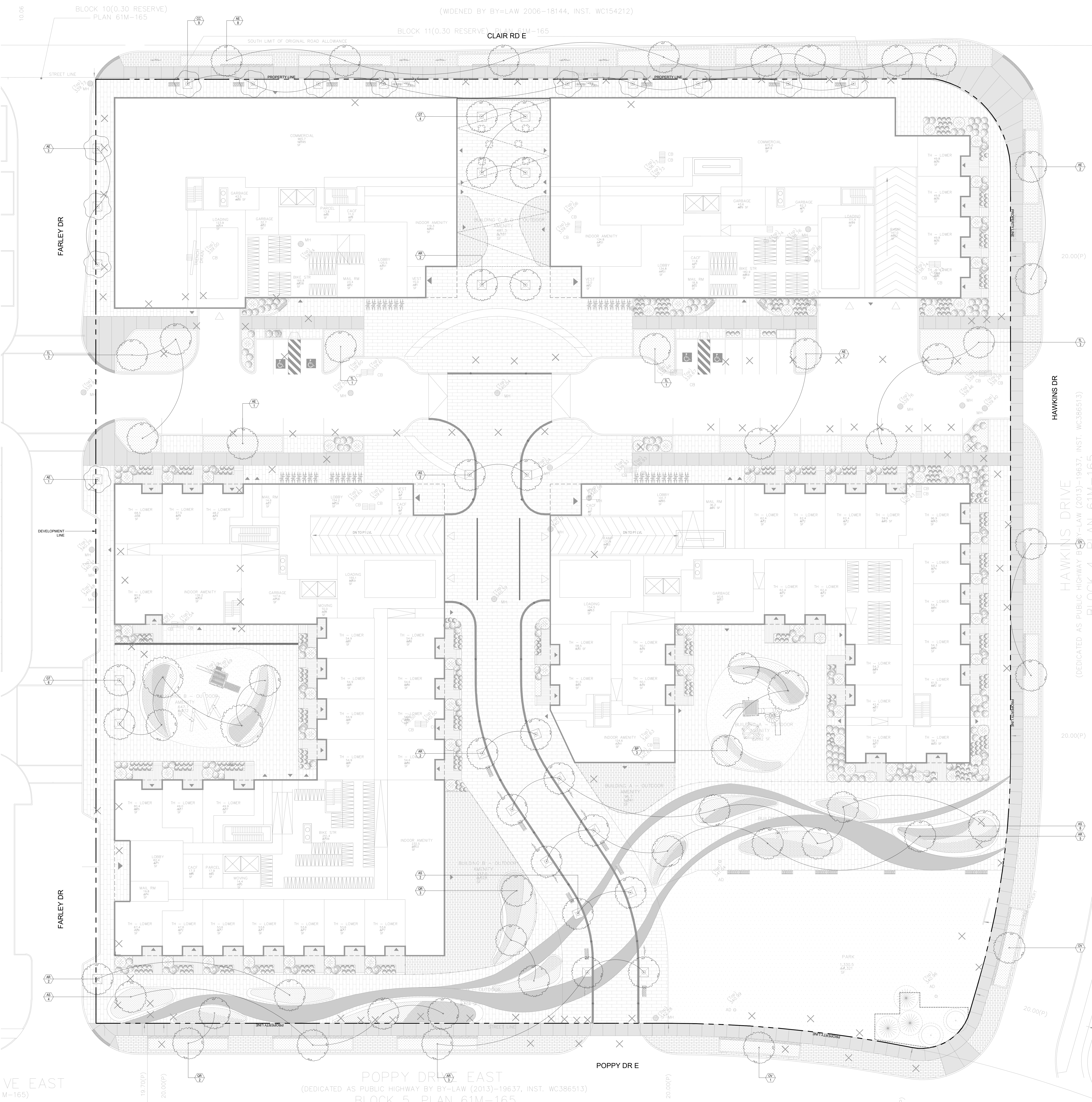
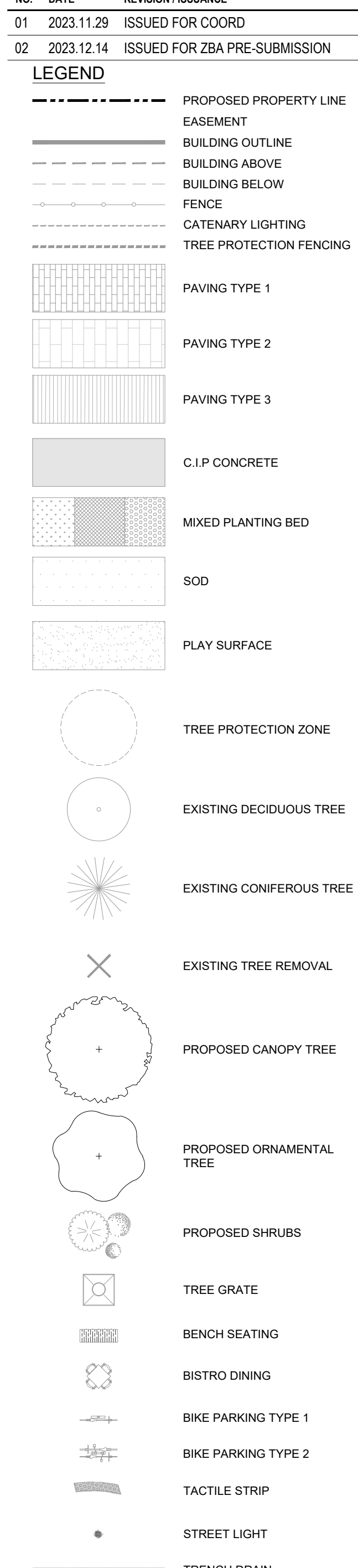


(WIDENED BY BY-LAW 2006-18144, INST. WC154212)



NOTES:
 A MINIMUM OF 30 m² OF QUALITY SOIL PER EVERY TREE AND A MINIMUM OF 20 m² PER TREES SHARING SOIL VOLUME WHICH IS THE REQUIRED MINIMUM SOIL VOLUME TO BE PROVIDED FOR TREES PLANTED IN HARDCAPING AS PER CITY OF GUELPH TREE TECHNICAL MANUAL AND A MINIMUM OF 36 m² FOR STREET TREES PER TREE AS PER GUELPH STREETSCAPE MANUAL.
 IRRIGATION USING NON-POTABLE WATER WILL BE PROVIDED FOR TREES WITHIN THE PROPERTY.
 A WATERING PROGRAM COMPLIANT WITH CITY STANDARDS WILL BE PROVIDED FOR ALL TREES ON CITY LAND THE FIRST TWO YEARS AFTER PLANTING.
 ALL TREES MUST BE PLANTED AS PER THE PLANS, APPROVED BY URBAN FORESTRY AND MUST ARRIVE ON SITE IN BALLED AND BURLAPPED CONDITION, WITH A MINIMUM CALIPER OF 60MM (OR AS SPECIFIED IF LARGER). EACH TREE SHALL HAVE THE BURLAP AND WIRE CASE OPENED AND SOIL BRUSHED AWAY UNTIL THE FIRST PROPER ROOT IS FOUND INDICATING THE TOP OF THE REAL ROOT BALL. THE TREE IS THEN TO BE PLANTED WITH THIS LEVEL TO BE CONSIDERED THE TOP OF ROOTBALL FOR ALL OTHER INSTRUCTIONS. ANY TREE FOUND PLANTED WITH THE FIRST PROPER ROOT MORE THAN 1.5CM BELOW PLANTING LEVEL WILL BE REJECTED AND REQUIRE REPLACEMENT OR REPLANTING AT THE CITY'S DISCRETION.
 AUTOMATIC IRRIGATION SYSTEM IS TO BE USED FOR AT-GRADE PLANTING WITHIN PRIVATE PROPERTY.



BLOCK 2, PLAN 61M-165

HAWKINS DRIVE
 (DEDICATED AS PUBLIC HIGHWAY BY BY-LAW (2013)-19637, INST. WC386513)
 BLOCK 4, PLAN 61M-165

ID	Qty	SCIENTIFIC NAME	COMMON NAME	SIZE	SPACING OC	NATIVE	SALT TOLERANT	DROUGHT TOLERANT
AR	17	<i>Ulmus glaberrimus</i>	Acornleaf Elm	Min 20mm Cal	As Shown	YES	TOLEANT	YES
OV	4	<i>Ostrya virginiana</i>	Ironwood	Min 20mm Cal	As Shown	YES	LOW	YES
AR	34	<i>Acer rubrum</i>	Red Maple	Min 20mm Cal	As Shown	YES	LOW	YES
AS	14	<i>Acer saccharinum</i>	Silver Maple	Min 20mm Cal	As Shown	YES	TOLEANT	YES
QR	5	<i>Quercus rubra</i>	Northern Red Oak	Min 20mm Cal	As Shown	YES	TOLEANT	YES
GT	10	<i>Gleditsia triacanthos</i>	Honey Locust	Min 20mm Cal	As Shown	YES	TOLEANT	YES
BP	3	<i>Betula papyrifera</i>	Paper Birch	Min 20mm Cal	As Shown	YES	TOLEANT	YES
TL	8	<i>Tilia cordata</i>	Little Leaf Linden	Min 20mm Cal	As Shown	YES	LOW	MODERATE
CC	9	<i>Cercis canadensis</i>	Eastern Redbud	Min 20mm Cal	As Shown	YES	TOLEANT	YES
Total	84							

SvN 110 Adelaide St. E.
 2nd Floor
 Toronto, Ontario
 M5C 1A6
 416.593.6499
 info@svn.com

PERGOLA COMMONS
 1 Glen Road East, Guelph, Ontario

PLANTING PLAN

PROJECT: 4104 DRAWN: MM
 SCALE: 1:200 CHECKED: MC

L-600

VE EAST
 M-165

POPPY DR E EAST
 (DEDICATED AS PUBLIC HIGHWAY BY BY-LAW (2013)-19637, INST. WC386513)
 BLOCK 5, PLAN 61M-165