



Clair-Maltby

Transform. Connect. Community.



Agenda

- Welcome & Introductions
- Project Background
- Summary of previous open space workshop feedback
- Community Park and Moraine Ribbon exercise
- Closing and Next Steps



Clair-Maltby Secondary Plan process

Phase 1 (April 2016 - July 2017)

- Background data collection
- Identify problem/opportunity statement
- Develop principles/goals

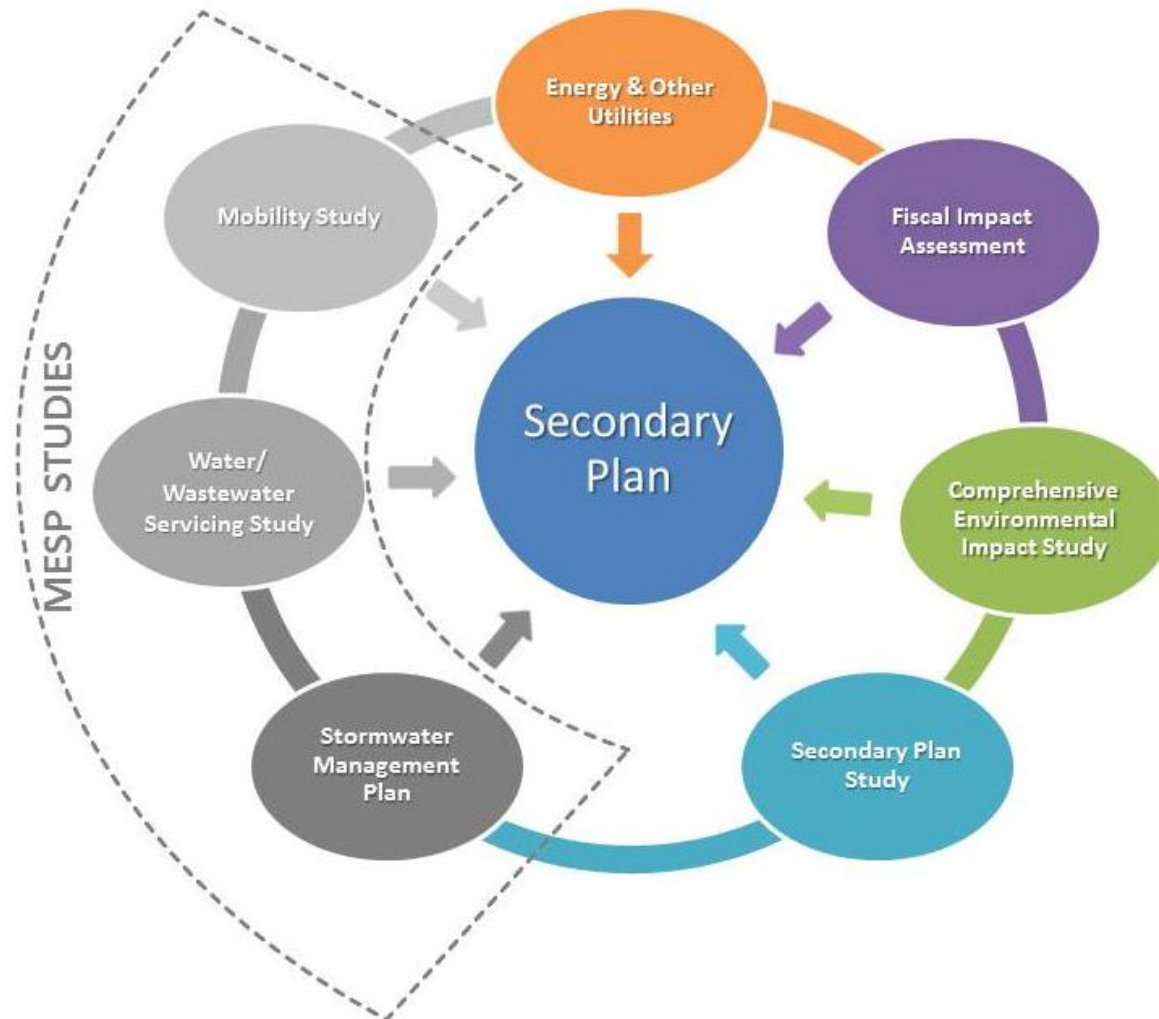
Phase 2 (July 2017 - June 2018)

- Develop Conceptual Community Structure
- Detailed studies
- Consideration of Community Structure Alternatives

Phase 3 (July 2018 - 2020)

- Preferred Alternative
- Draft Master Environmental Servicing Plan and Secondary Plan
- Final Master Environmental Servicing Plan and Secondary Plan to Council

Clair-Maltby Secondary Plan process diagram



Clair-Maltby vision





Clair-Maltby vision

Clair-Maltby will be a **vibrant, urban** community that is integrated with Guelph's southern neighbourhoods, as well as having strong connections to Downtown, employment areas and the rest of the City.



Clair-Maltby vision continued

The Natural Heritage System and the Paris Moraine provide the framework for the balanced development of **interconnected and sustainable neighbourhoods.**



Clair-Maltby vision continued

The area will be primarily **residential** in character with a **full range and mix of housing types** and a variety of other uses that **meet the needs of all residents.**



Clair-Maltby vision continued

A **system of parks, open spaces and trails** will be interwoven throughout to provide opportunities for active and passive recreation.

Guiding principles



Vibrant and Urban



Green and Resilient



Healthy and Sustainable

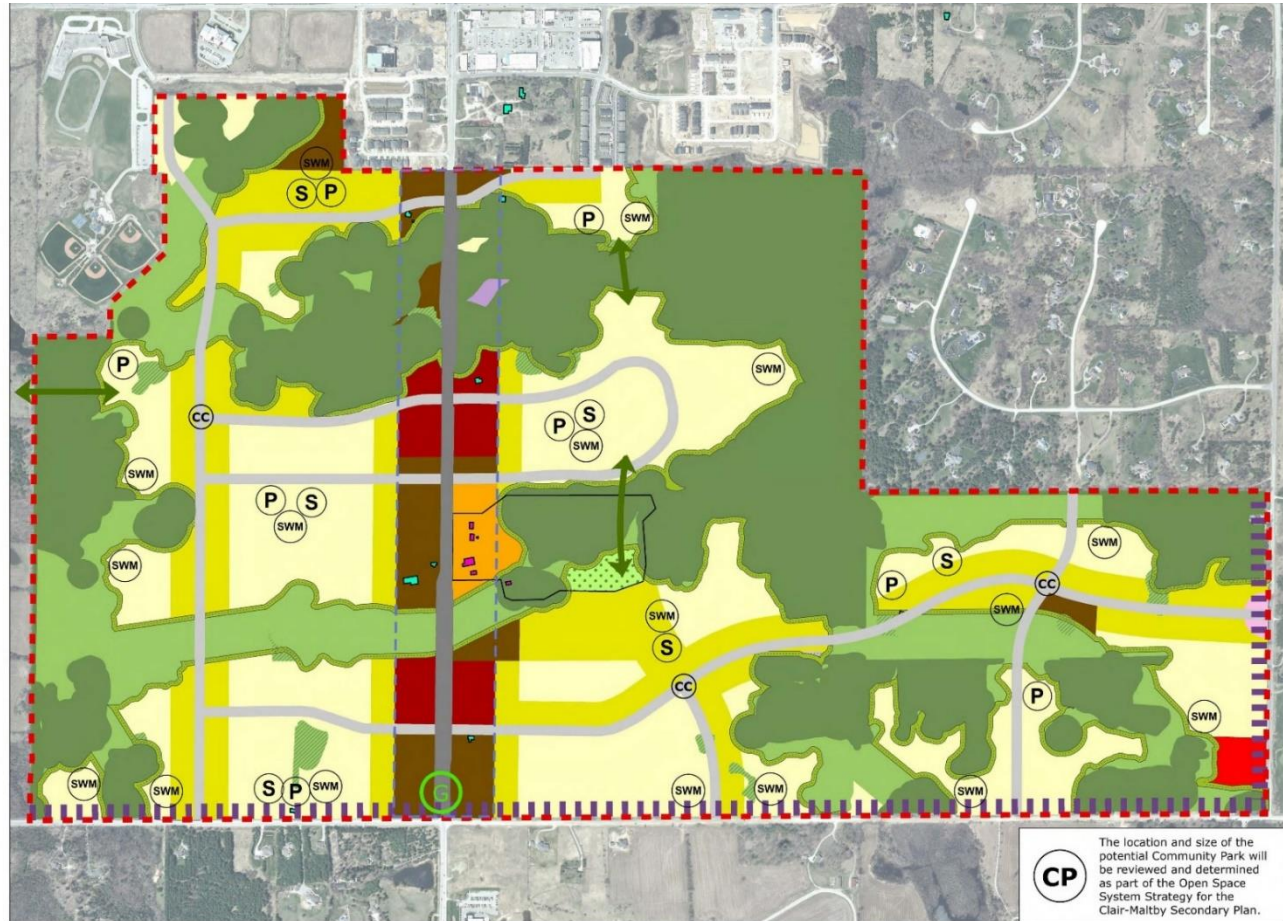


Interconnected and Interwoven



Balanced and Liveable

Preferred Community Structure



What is the open space system?

An interconnected system of parks, trails, and greenspace that are accessible to the public within Clair-Maltby.





Assumptions

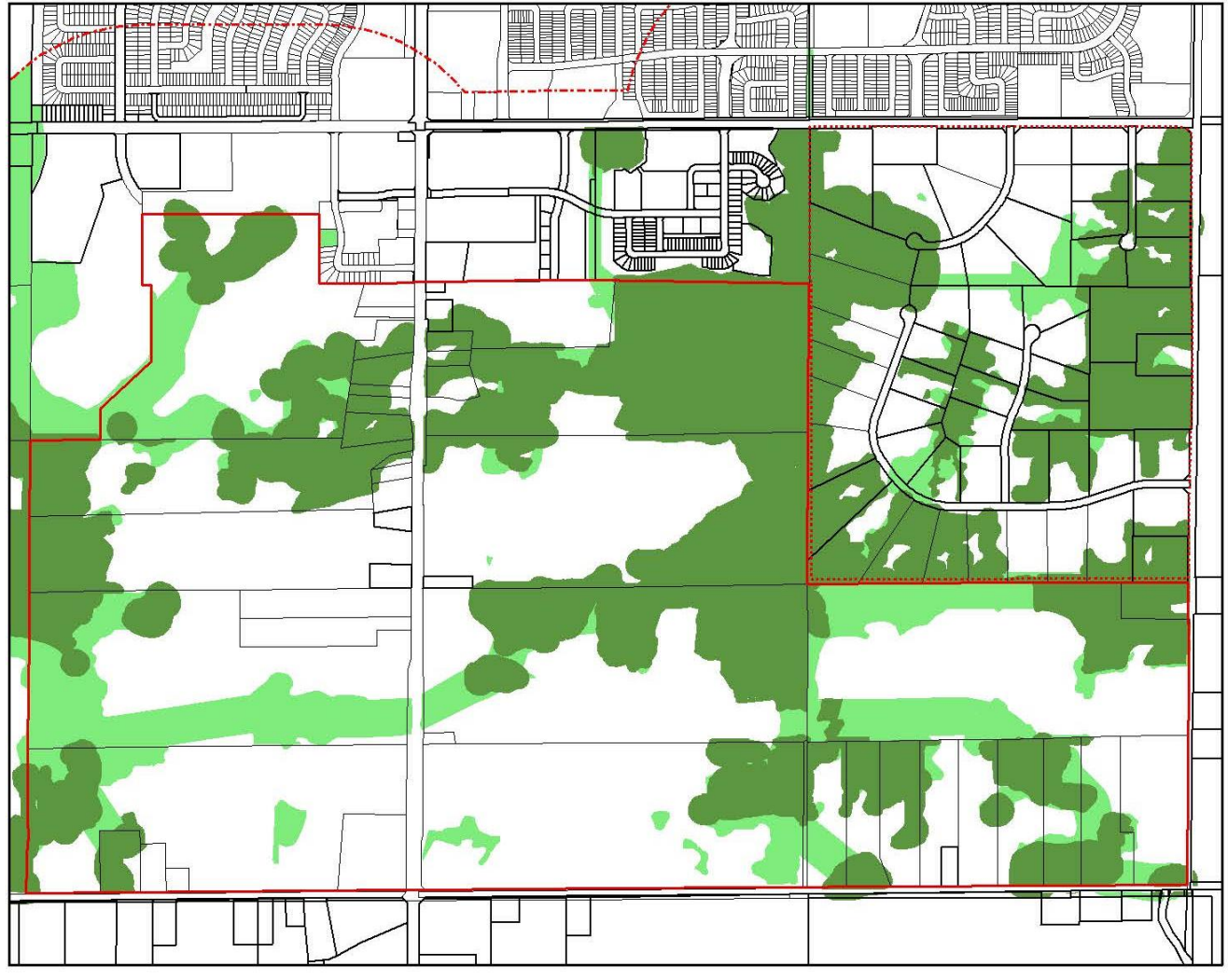
- This process is not intended to develop detailed programming and trail mapping for open spaces
- The Natural Heritage System is not a component of the open space system



Assumptions continued

- Open space planning is not influenced by existing or potential future property lines, current ownership or plans for development
- The financial feasibility still needs to be explored and will impact any final recommendations

What is the Natural Heritage System?





Community Parks

- provide facilities for active recreation at an intermediate and/or major level such as sports fields, recreation and/or community centres
- may contain natural areas, beaches, trails, picnic areas, public recreation facilities and passive areas.



Parks in Clair-Maltby

- Goal of a minimum of 10 hectares of Community Park space
- A Community Park should have access to a collector or arterial road, not be located within the NHS or within the Gordon Street corridor
- Eight additional neighbourhood parks are also planned



What the community told us about SIZE

- Some preference for one large park over two medium parks
- Large enough to accommodate multiple functions accessibly in all seasons
- Interconnected with other parks and trails
- Topography and naturalized environment should be maintained



What the community told us about LOCATION

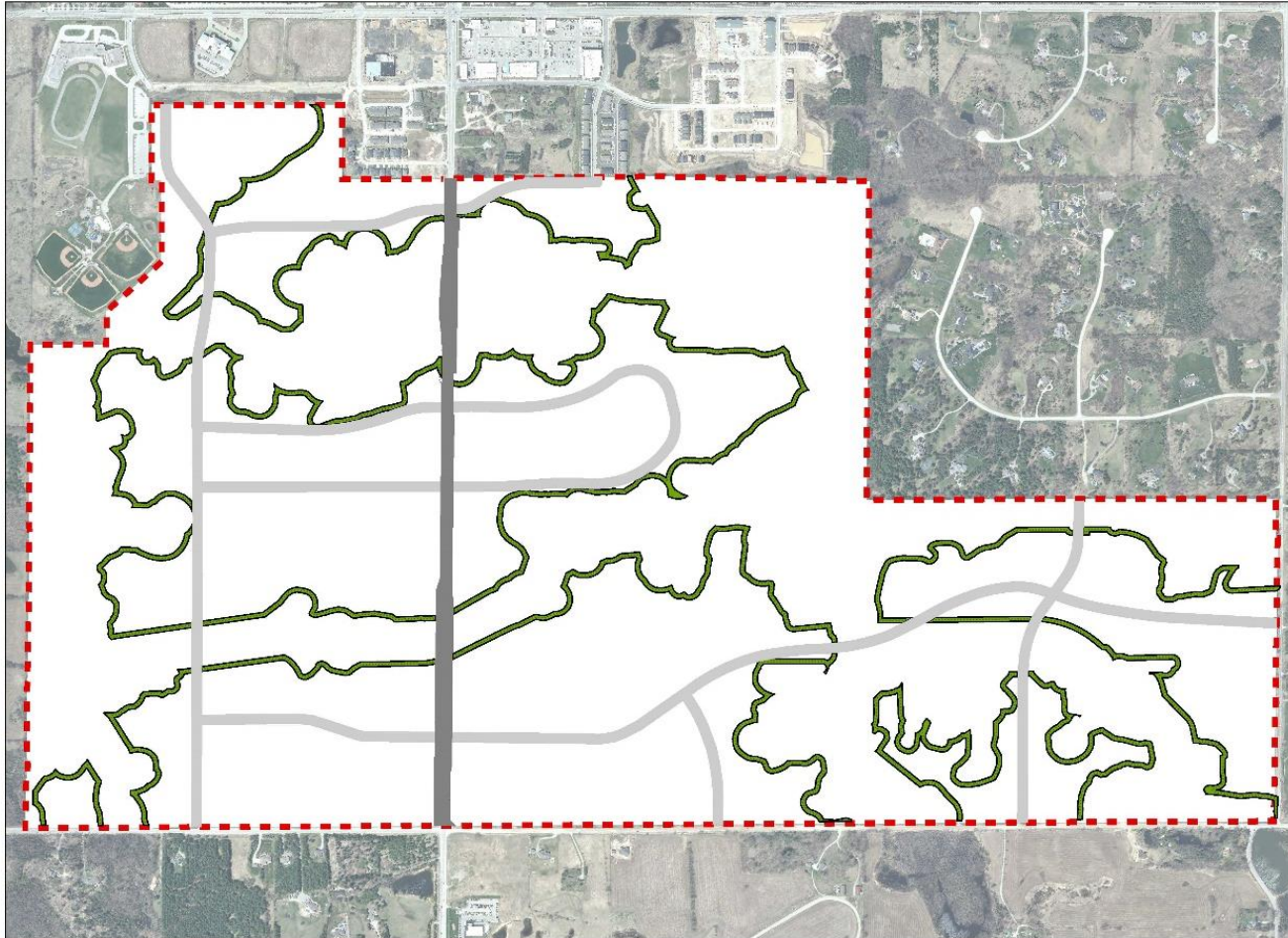
- Centrally located
- Walkable
- Accessible by various modes of transportation
- Interconnected
- Safe, quiet
- Near landmarks/notable features
- Minimal impact to natural area
- Maintain topography
- Infrastructure sufficient to handle increased traffic



What the community told us about FUNCTION

- Protect topography and environmental/natural features as part of the function of the park
- Accessible
- Flexible to changing needs
- Both passive and active recreation
- Usage for all ages
- Trails

Moraine Ribbon

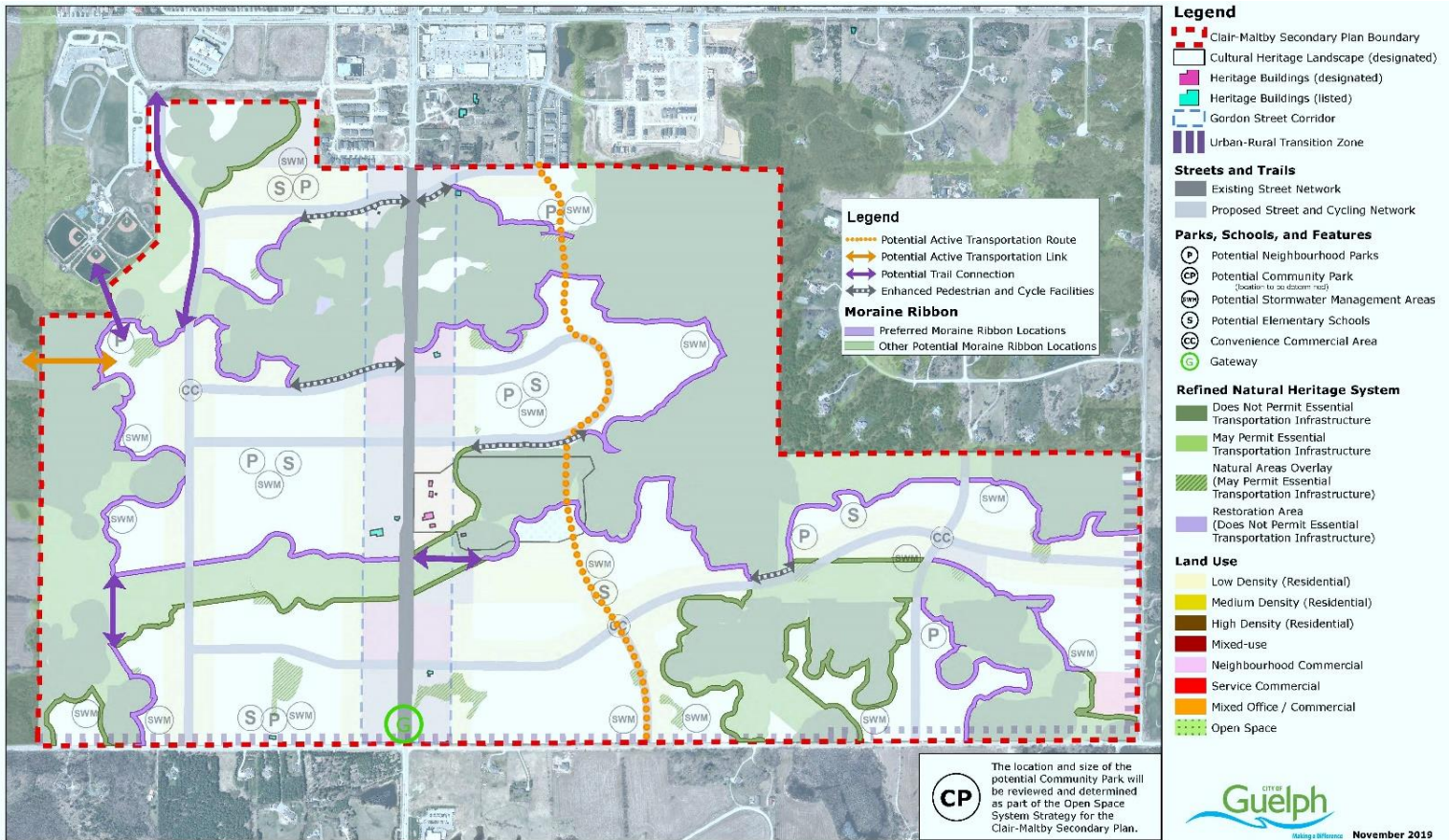




What the community told us about the MORaine RIBBON

- Polarized opinions on whether the ribbon is needed
- Possible interruptions to the moraine ribbon could happen:
 - At its narrowest points
 - At the outer edges first
 - Where there is least environmental impact
 - To enhance connectivity and linkages
 - Along transportation routes
 - Near very high density areas
 - In transition zones
 - Where it interrupts the possibility of development
 - Where land topography is less variable, hummocky

Preferred moraine ribbon locations





At this meeting...

Objective:

To apply the community's considerations to a shorter list of 6 possible community park locations

A station for additional feedback on the moraine ribbon is also available

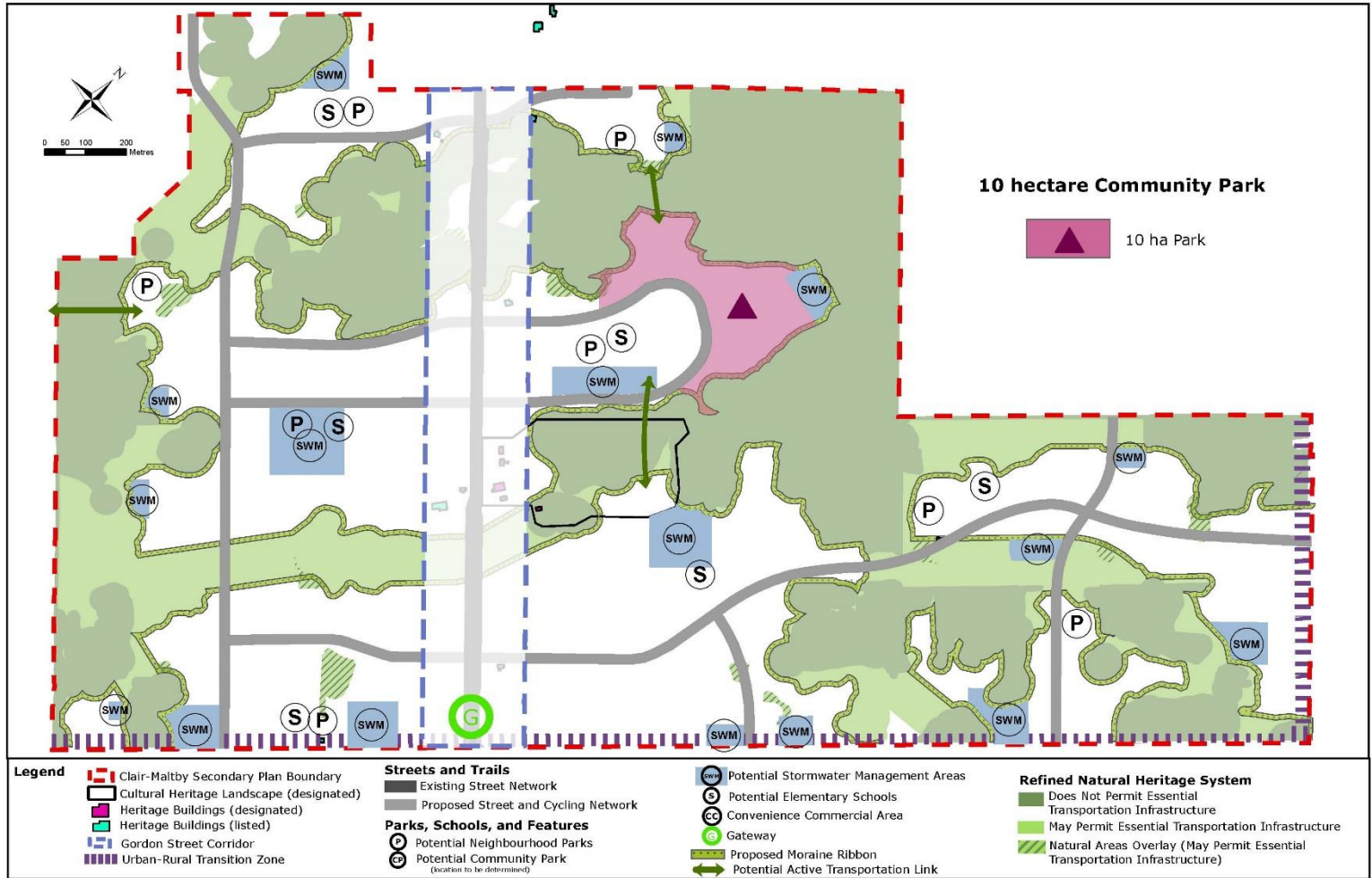


Your Task

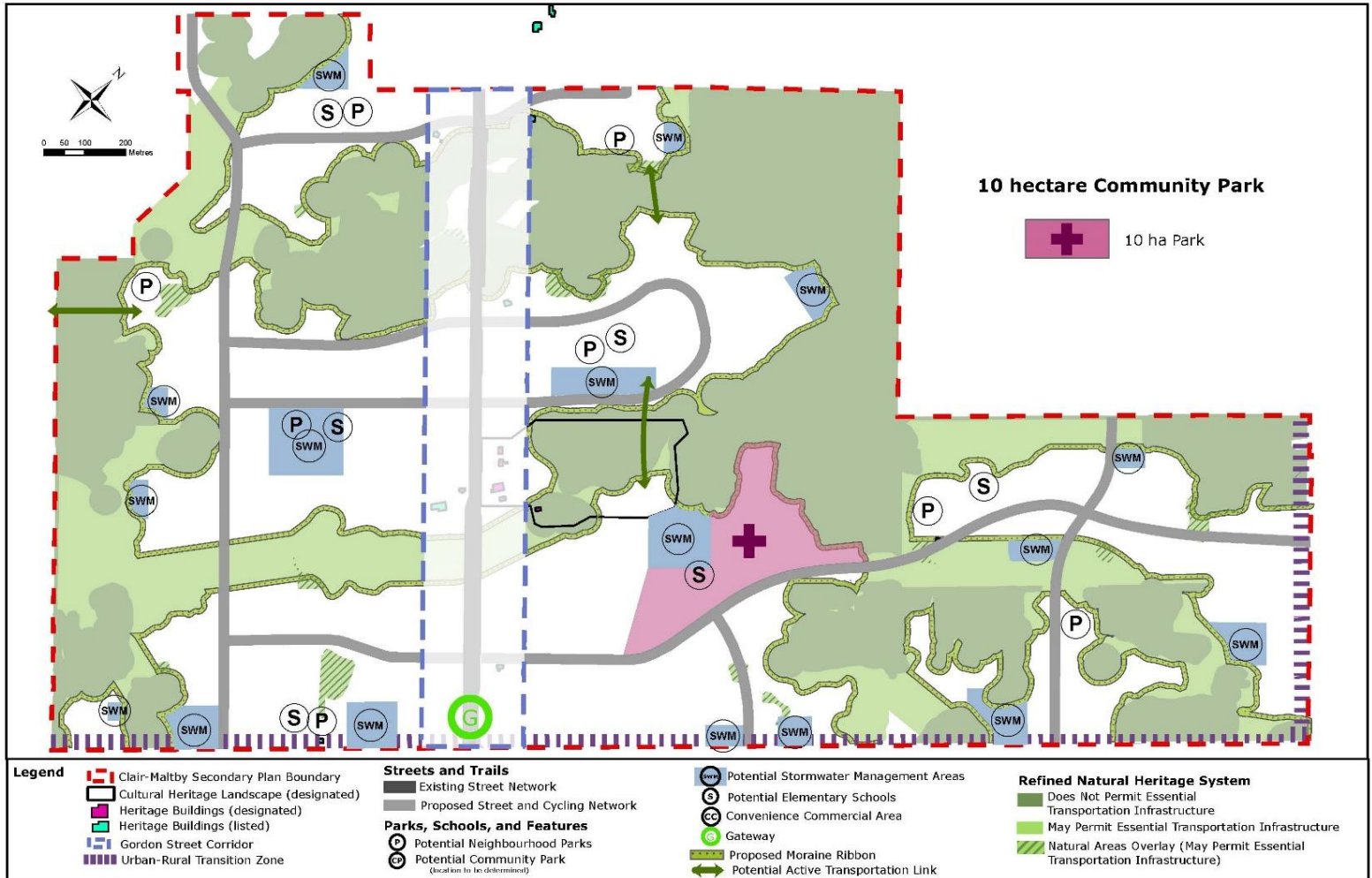
The 6 park scenarios are posted around the room.

Keeping in mind the community considerations provided, describe the pros and cons of each scenario. You can write them directly on the flip chart paper or on post-it notes that you then stick to the paper.

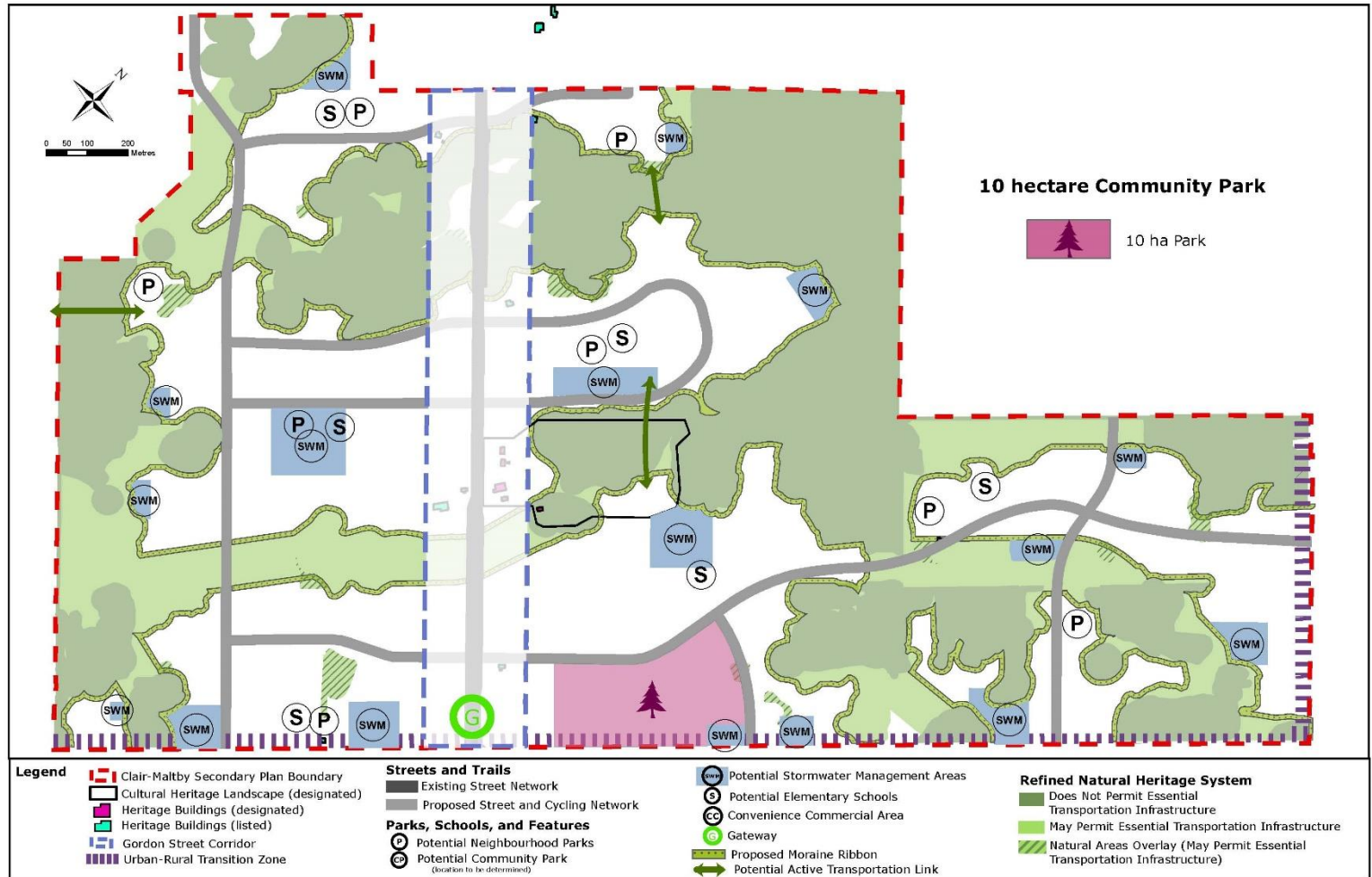
10 Ha Park Scenario



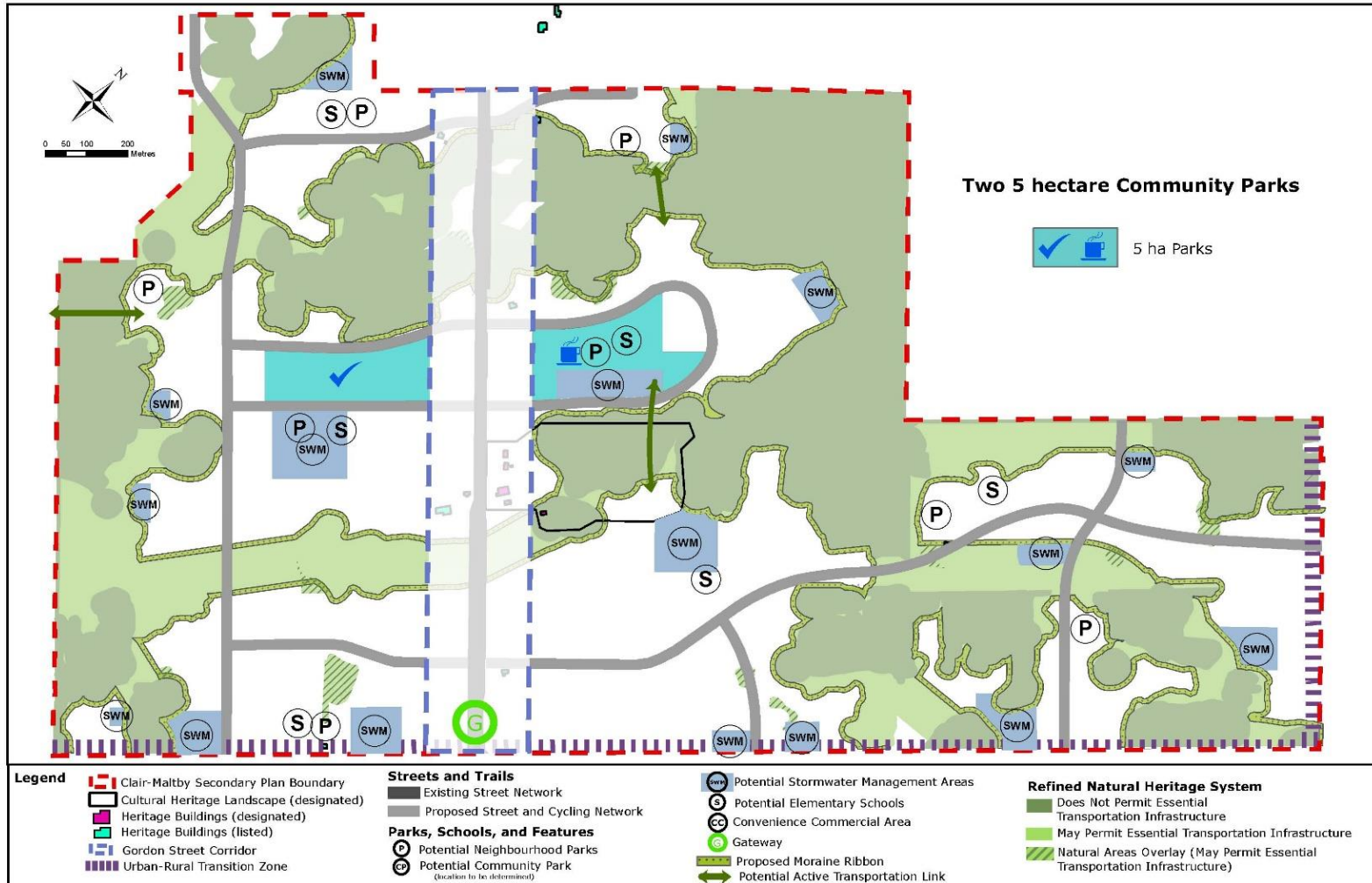
10 Ha Park Scenario



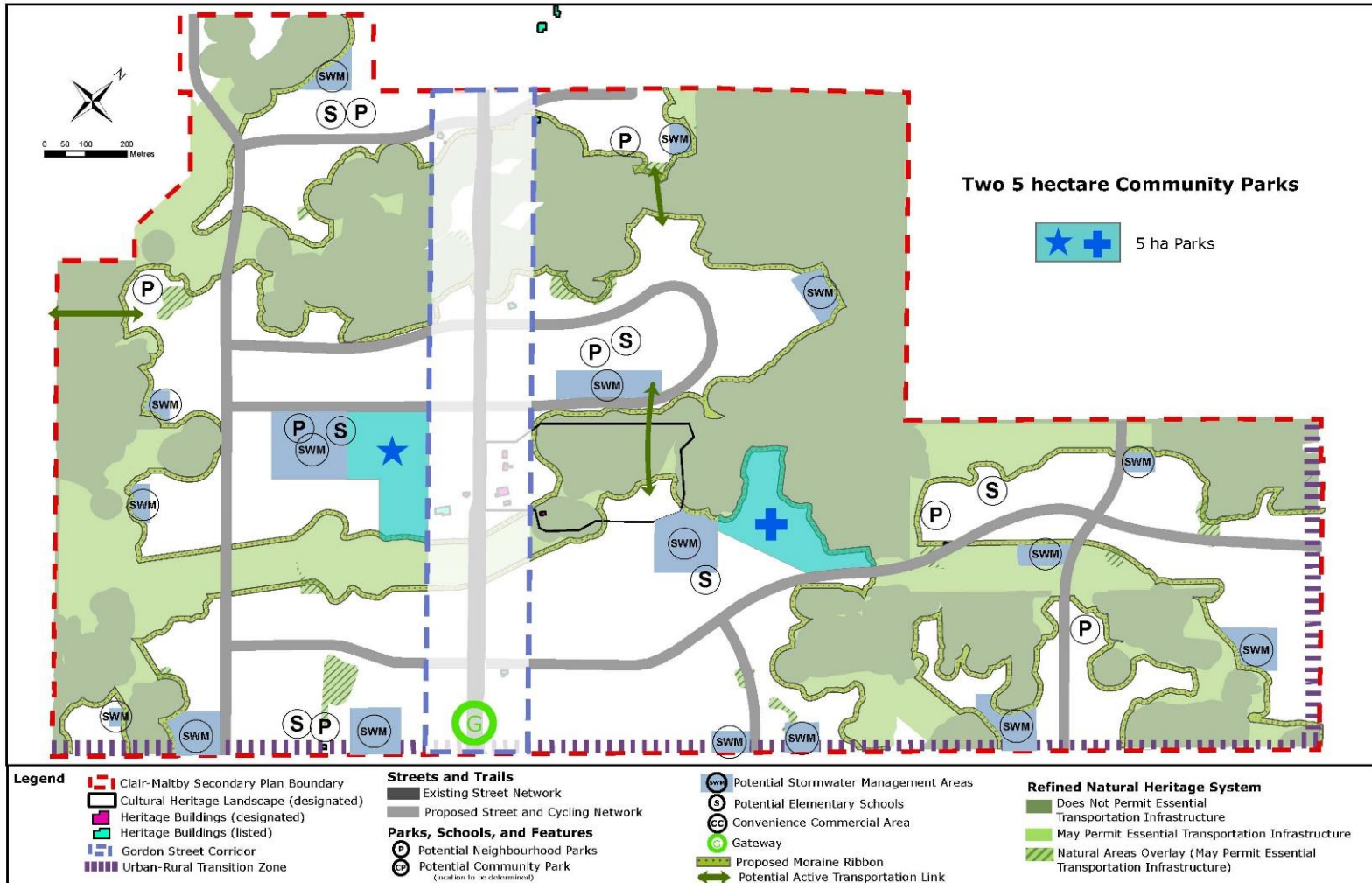
10 Ha Park Scenario



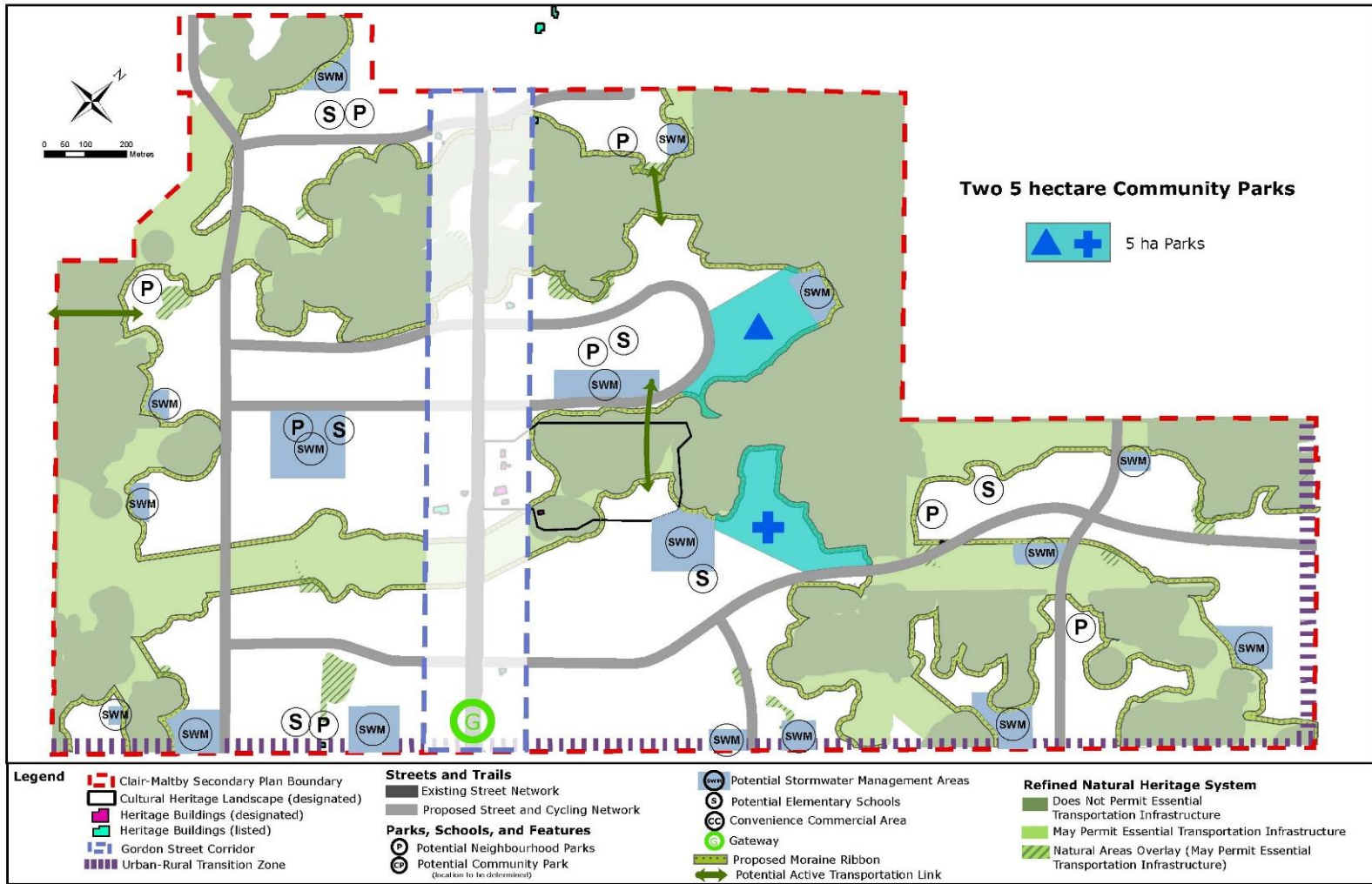
Two 5 Ha Park Scenario



Two 5 Ha Park Scenario



Two 5 Ha Park Scenario





Next steps

1. Recommended open space policy directions to Council in early 2020
2. Release of the first draft of the Secondary Plan Master Environmental and Servicing Plan
3. Public Open House
4. Statutory Public Meeting (Guelph City Council)
5. Additional public engagement opportunities as needed
6. Council Approval



Next Steps

Online Survey

haveyoursay.guelph.ca

- November 21 - December 5