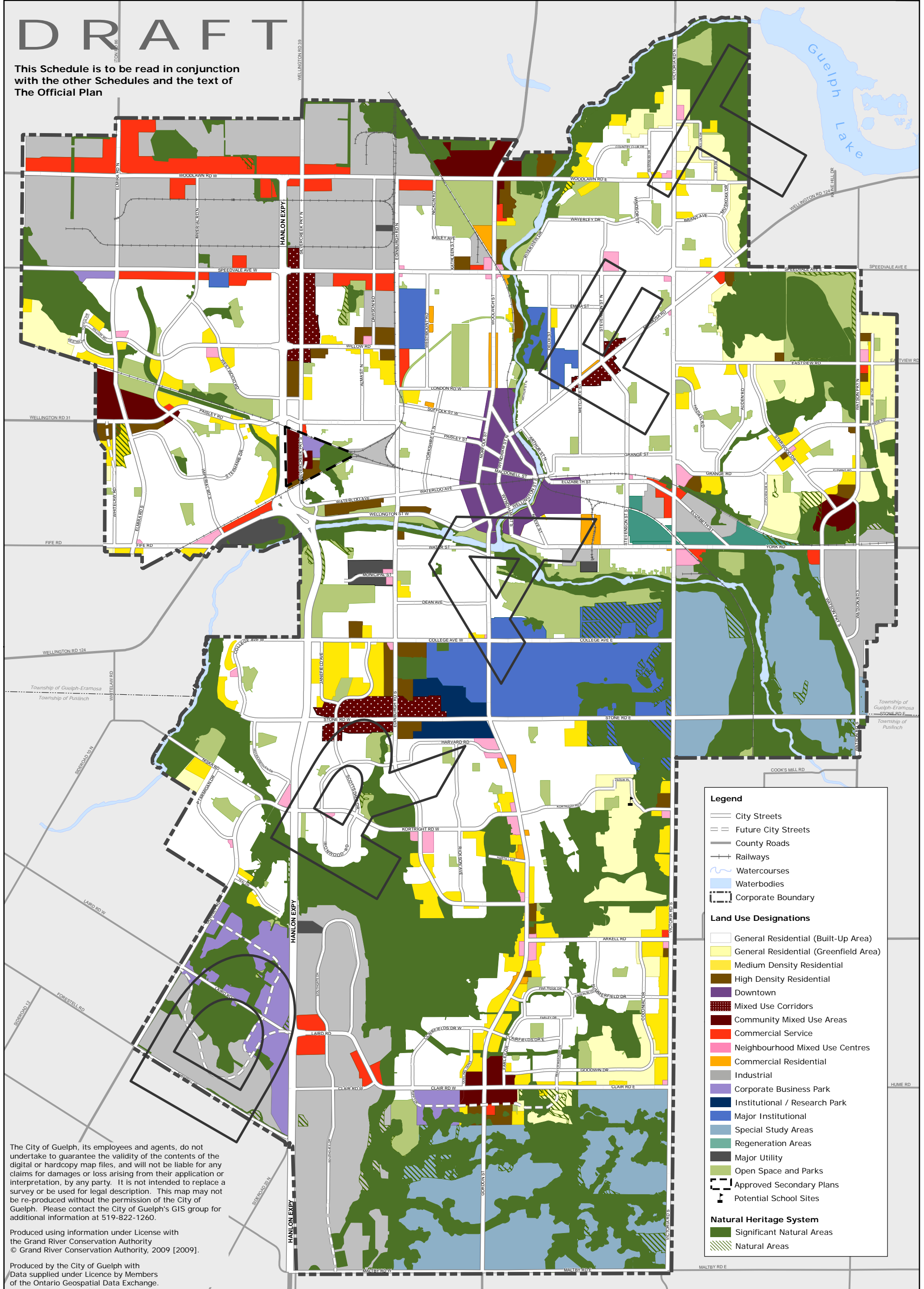


DRAFT

This Schedule is to be read in conjunction with the other Schedules and the text of The Official Plan



Legend

- City Streets
- Future City Streets
- County Roads
- Railways
- Watercourses
- Waterbodies
- Corporate Boundary

Land Use Designations

- General Residential (Built-Up Area)
- General Residential (Greenfield Area)
- Medium Density Residential
- High Density Residential
- Downtown
- Mixed Use Corridors
- Community Mixed Use Areas
- Commercial Service
- Neighbourhood Mixed Use Centres
- Commercial Residential
- Industrial
- Corporate Business Park
- Institutional / Research Park
- Major Institutional
- Special Study Areas
- Regeneration Areas
- Major Utility
- Open Space and Parks
- Approved Secondary Plans
- Potential School Sites

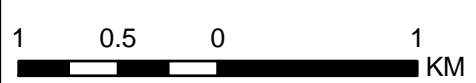
Natural Heritage System

- Significant Natural Areas
- Natural Areas

The City of Guelph, its employees and agents, do not undertake to guarantee the validity of the contents of the digital or hardcopy map files, and will not be liable for any claims for damages or loss arising from their application or interpretation, by any party. It is not intended to replace a survey or be used for legal description. This map may not be re-produced without the permission of the City of Guelph. Please contact the City of Guelph's GIS group for additional information at 519-822-1260.

Produced using information under License with the Grand River Conservation Authority
© Grand River Conservation Authority, 2009 [2009].

Produced by the City of Guelph with Data supplied under Licence by Members of the Ontario Geospatial Data Exchange.



CITY OF GUELPH OFFICIAL PLAN DRAFT SCHEDULE 2: LAND USE PLAN

