

Clair-Maltby Public Information Centre & Visioning Session

April 27, 2017

Purpose

- Project overview
- Public and stakeholder input into vision and guiding principles

Presentation Outline

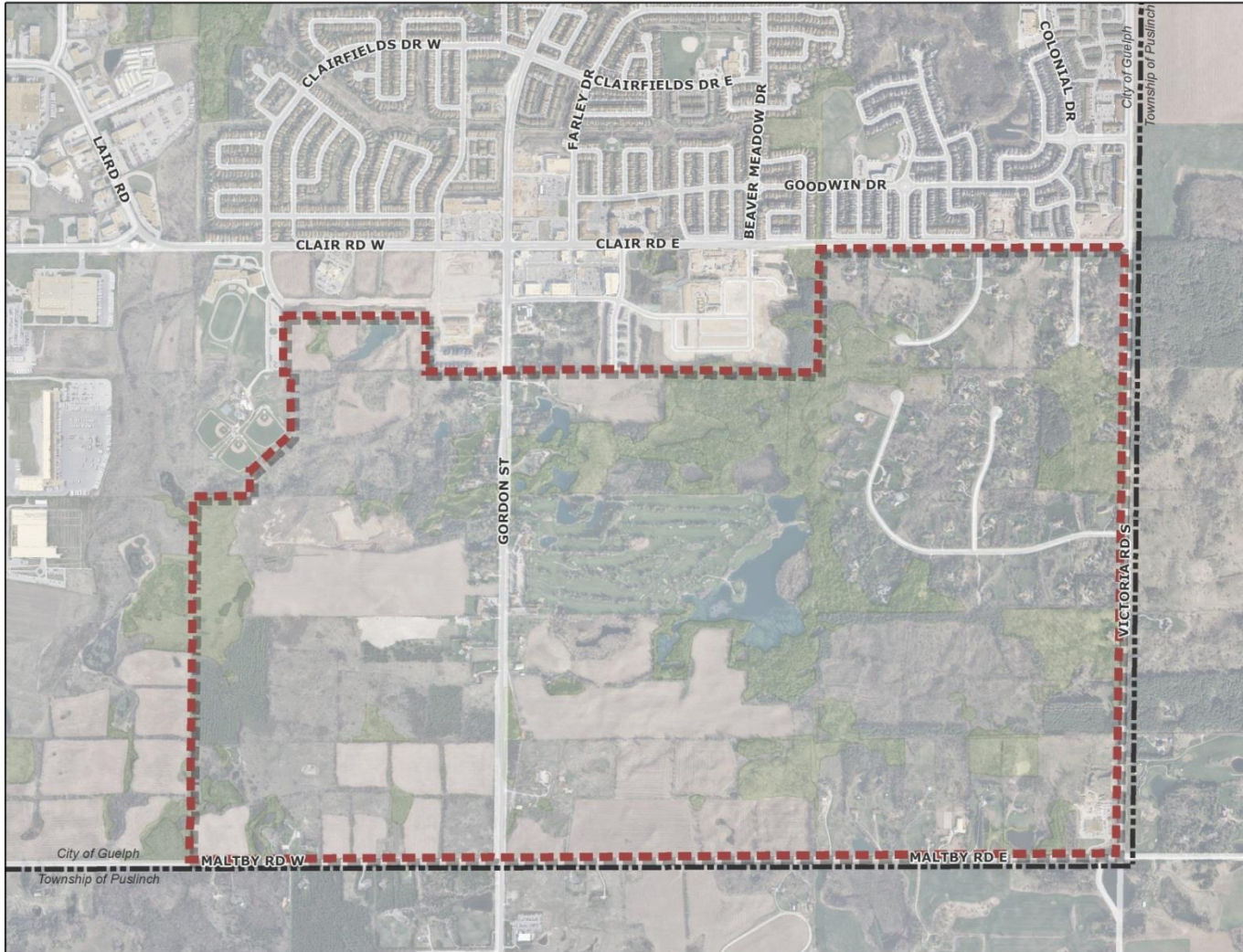
- Introductions
- Background/Study Context
- Next Steps
- Visioning Approach

Background/Context

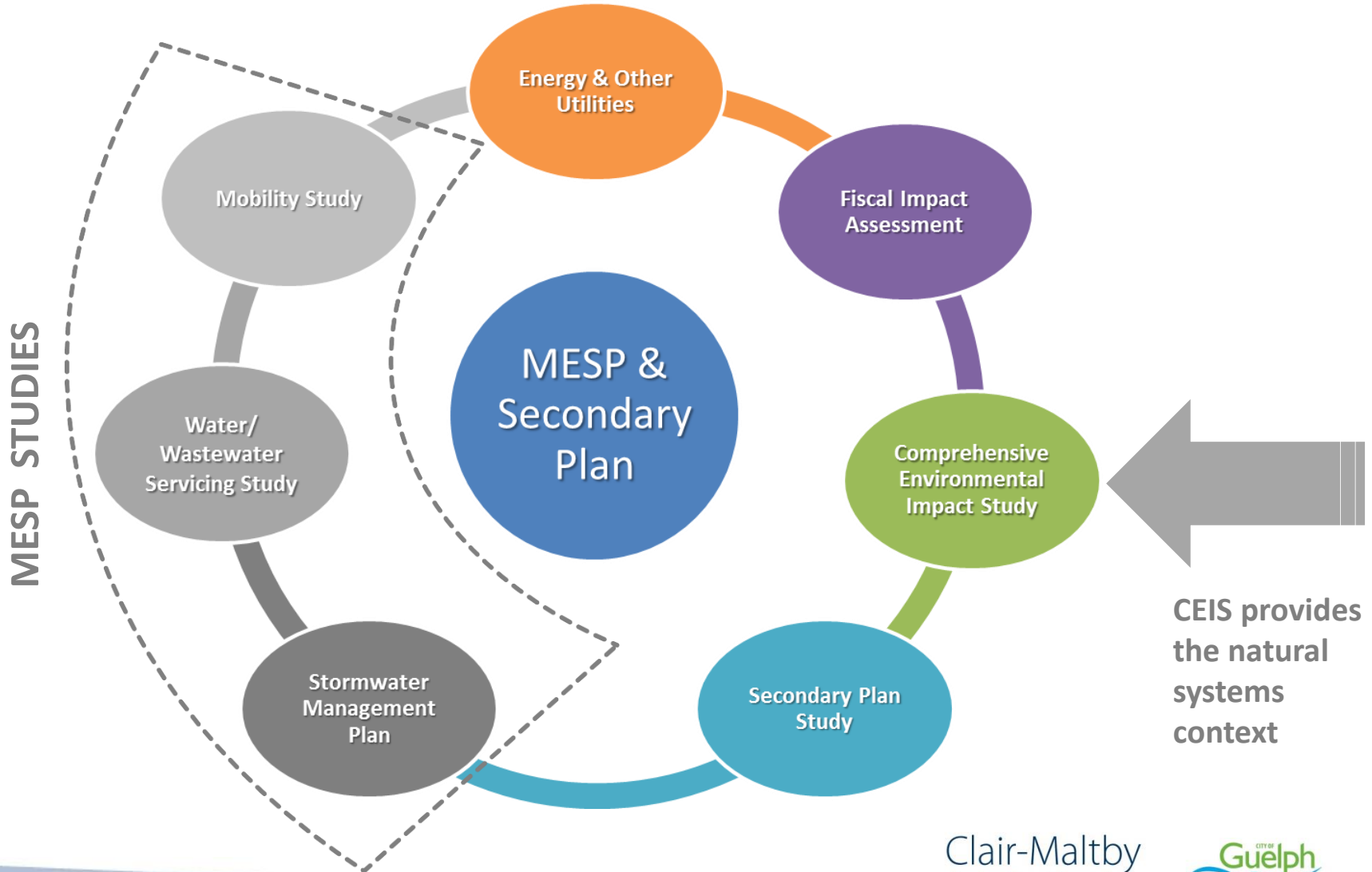
Background

- The Clair-Maltby Secondary Plan (CMSP) and Master Environmental Servicing Plan (MESP) process provides an integrated approach to advance the development of the CMSP Area.
- The approach integrates land use, environment, transportation and servicing studies/plans to guide the Secondary Plan.

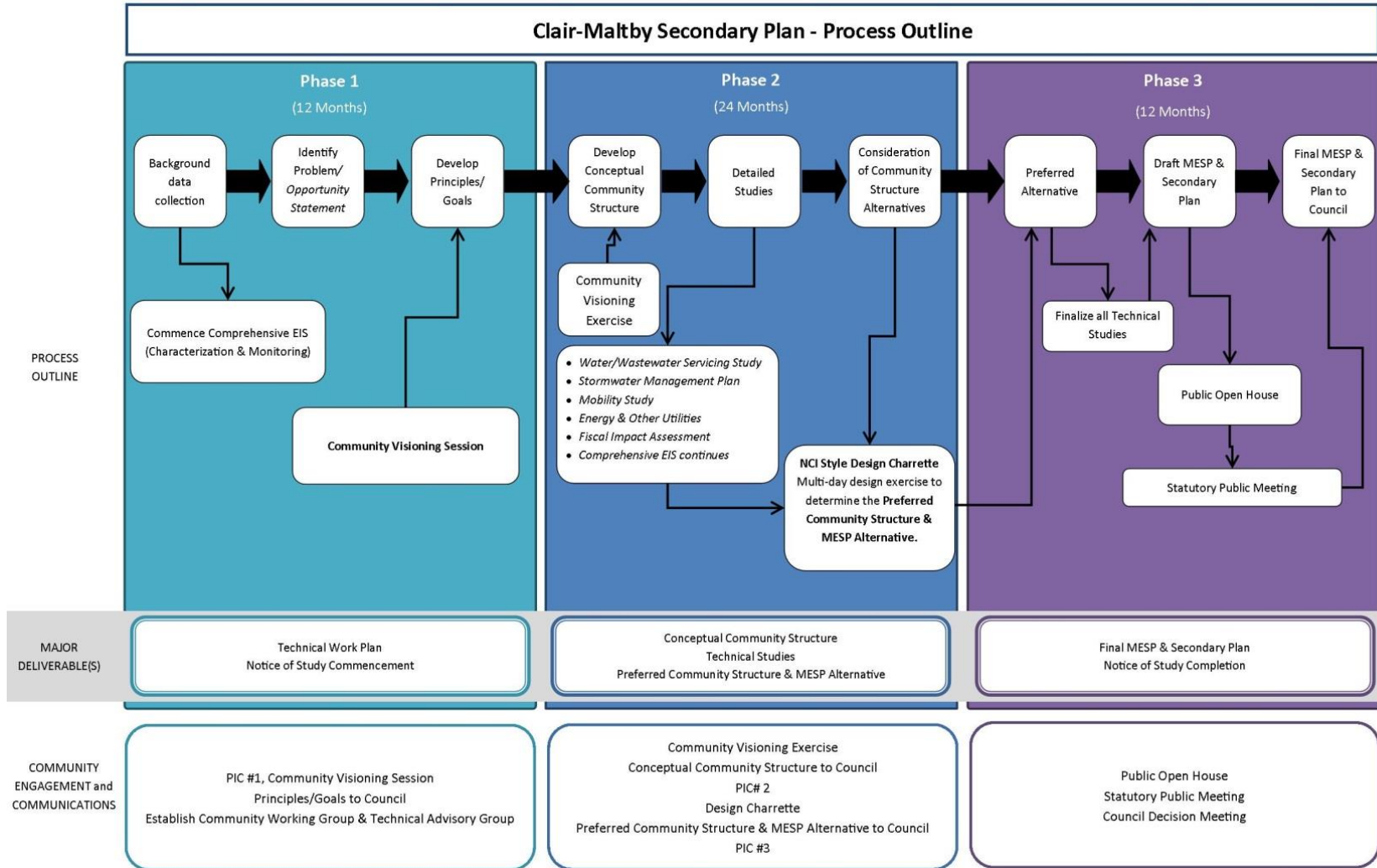
Study Area



Study Components



Overview of Study Process



Technical Study Work Plan Context

- Preliminary Work Plans were submitted as part of the proposal for mobility, servicing, stormwater management, energy and Comprehensive Environmental Impact Study (CEIS).
- The Consultant Team is updating and refining the Work Plans based on:
 - Review of background information;
 - Field reconnaissance;
 - Consultation with stakeholders.

Purpose of Comprehensive Environmental Impact Study (CEIS)

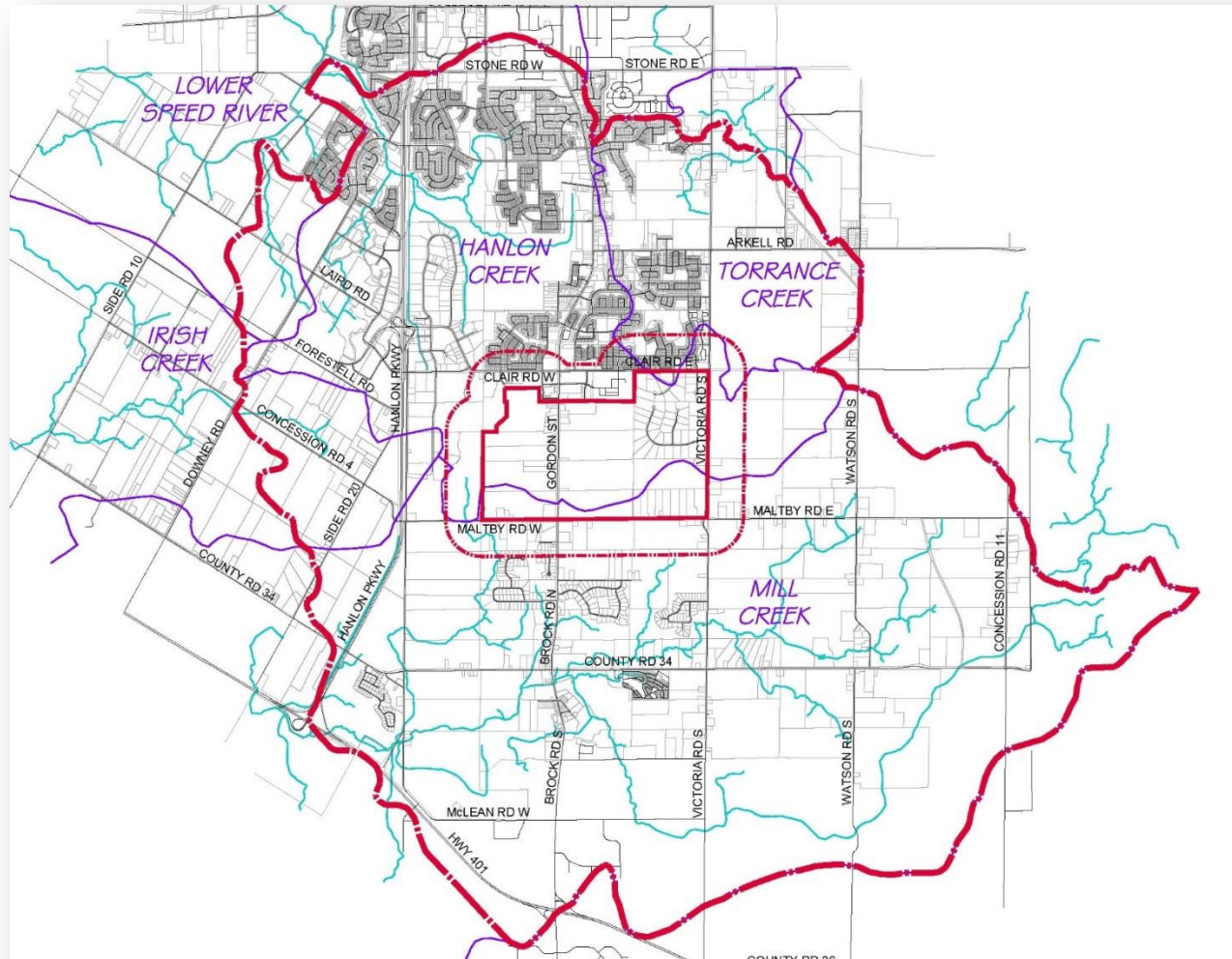
- Technical basis for informing:
 - Servicing and transportation, including trails;
 - Conceptual Community Structure Options; and,
 - Preferred Community Structure Alternative.
- Relates to
 - Surface water (Hydrology/Hydraulics);
 - Groundwater (Hydrogeology);
 - Landform (Geology); and,
 - Natural Heritage (Terrestrial/Aquatic).

CEIS Study Areas

Secondary
Plan Area
(SPA)

Primary
Study Area
(PSA)

Secondary
Study Area
(SSA)



Status/Process Update

- Water Monitoring (Groundwater and Surface Water) associated with CEIS currently underway – 3 years required (2016, 2017, 2018);
- Winter wildlife surveys have been carried out;
- Joint RSAC/EAC meeting (November 16, 2016) to discuss work plan for CEIS;
- MNRF/GRCA meeting (January 11, 2017) to discuss work plan for CEIS;
- Technical Advisory Group established and first meeting held on February 7, 2017 to discuss CEIS technical work plan – other disciplines being discussed throughout the project; and,
- CEIS Work Plan to be finalized based on all comments received (April 2017).

Secondary Plan Status

Preliminary background analysis of existing conditions will be complete by end of April 2017 including:

- Planning Policy Framework;
- Cultural Heritage Resources;
- Archaeological Resources;
- Energy and Utilities;
- Mobility;
- Stormwater Management;
- Water and Wastewater Servicing; and,
- Demographic and Economic Trends.

Secondary Plan: Policy Framework

Provincial Policy Statement (PPS) and Growth Plan provide direction on the creation of efficient land use and development patterns with the intent of:

- Creating strong, livable and healthy communities;
- Protecting the environment and public health and safety; and,
- Facilitating economic growth.

The Growth Plan provides specific direction related to growth management (e.g. greenfield residential/jobs target).

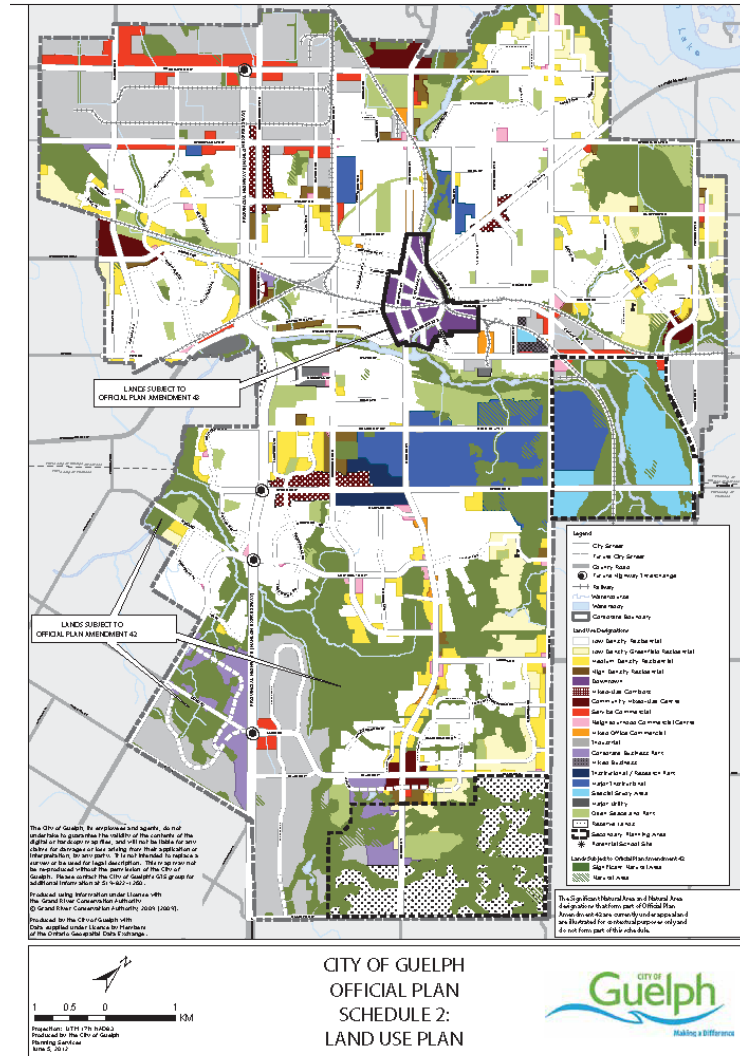
Secondary Plan: Policy Framework

The City's Official Plan builds on Provincial policy. Key themes include:

- Complete communities;
- Natural Heritage System;
- Transportation including transit, cycling and walking;
- Climate change;
- Phasing of development and services;
- Urban design;
- Range of housing types and densities;
- Cultural heritage resources; and,
- Sustainable neighbourhoods.

Secondary Plan: Policy Framework

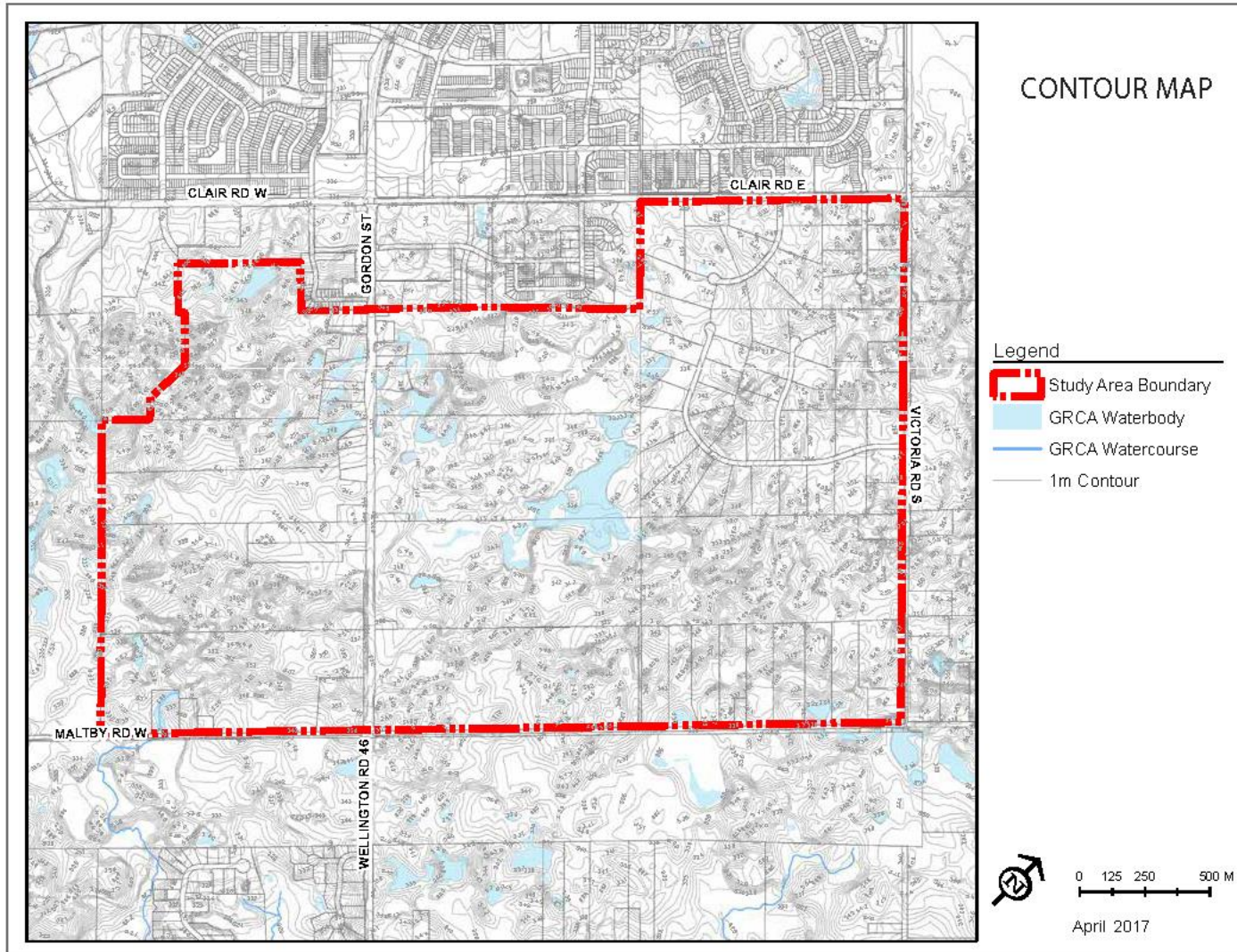
OFFICIAL PLAN LAND USE SCHEDULE



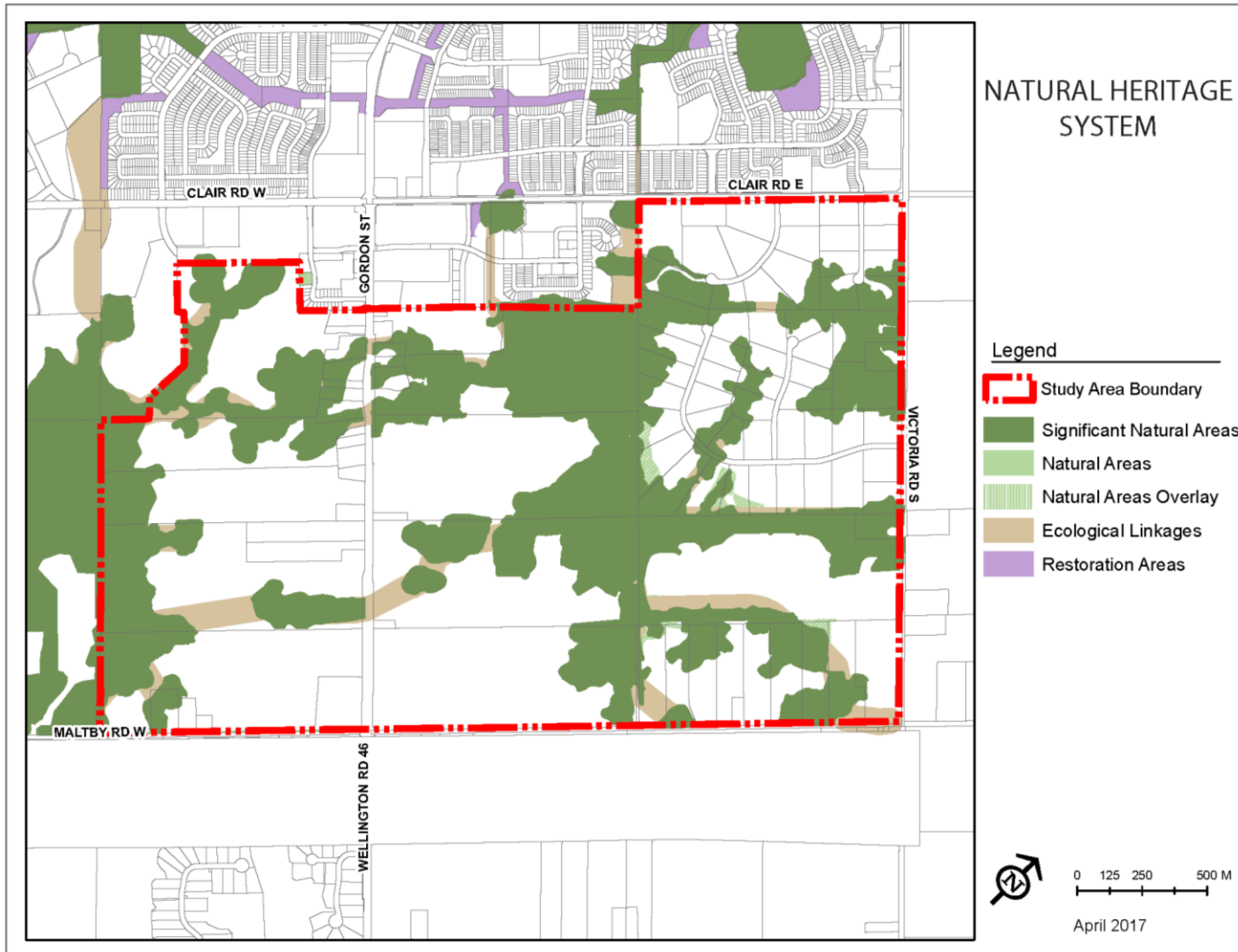
Secondary Plan: Current Influences

- Hummocky topography and drainage issues;
- Balancing the protection of the natural heritage system with accommodating urban development;
- Existing land uses;
- Cultural heritage resources;
- Potential for presence of archaeological resources;
- Challenges related to the achievement of a connected transportation system which supports all transportation modes; and,
- Need to extend services into the area.

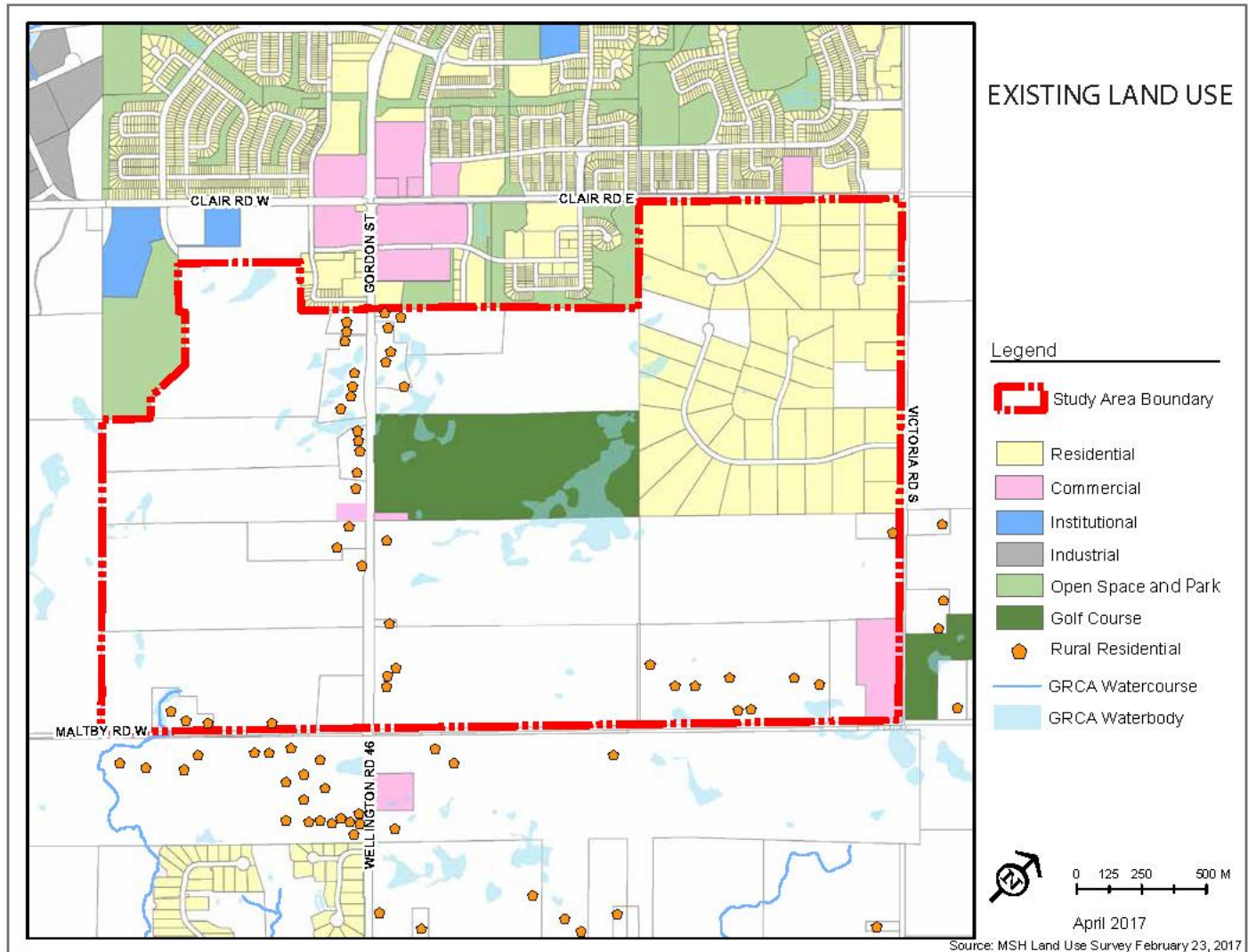
Secondary Plan: Current Influences



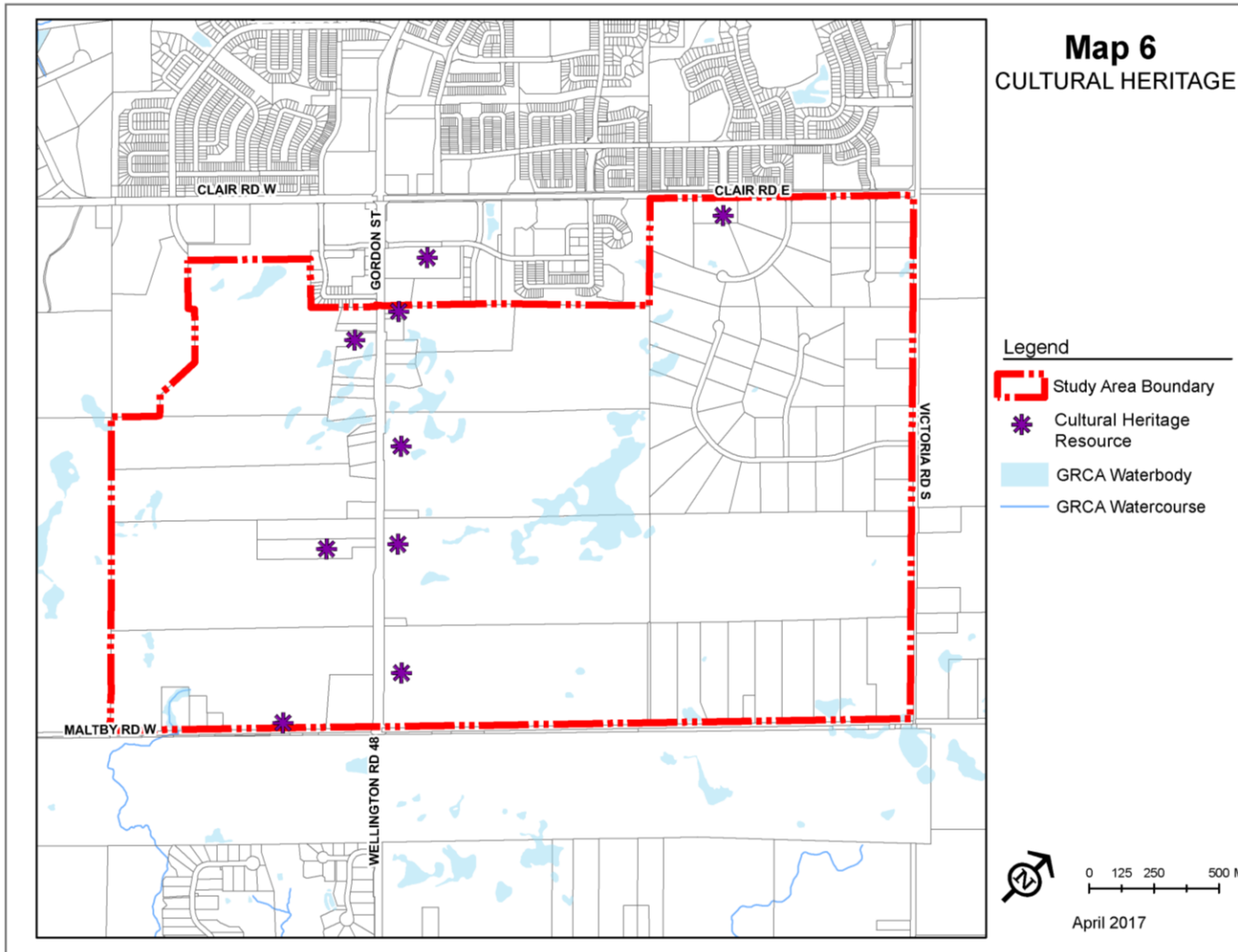
Secondary Plan: Current Influences



Secondary Plan: Current Influences



Secondary Plan: Current Influences



Secondary Plan: Other Considerations

Planning will take into account:

- Vision and Guiding Principles;
- Demographic, land use and employment trends;
- Conclusions of the various supporting studies including the CEIS as well as the other technical studies and the fiscal impact assessment; and,
- Urban design considerations.

Next Steps & Anticipated Timing

March/April 2017	Develop and finalize all technical work plans
April 27, 2017	Visioning Workshop/PIC #1 to develop draft vision and guiding principles for the Study
July 2017	Vision/principles to Council for endorsement
<u>Tentative Timing</u>	
September 2017	Visioning Exercise to develop Conceptual Community Structure
Q4 2017	Conceptual Community Structure to Council for endorsement
March 2018	Design Charrette to determine the Preferred Community Structure Alternative
Q2 2018	Preferred Community Structure Alternative to Council for endorsement



Visioning Approach

Guiding Principles - Examples

Guelph Innovation District Secondary Plan 'Principles'

1. Protect what is Valuable
2. Create Sustainable and Energy Efficient Infrastructure
3. Establish a Multi-modal Pedestrian-focused Mobility System
4. Create an Attractive and Memorable Place
5. Promote a Diversity of Land Uses and Densities
6. Grow Innovative Employment Opportunities

Downtown Secondary Plan 'Principles'

1. Celebrate What We've Got
2. Set the Scene for Living Well Downtown
3. A Creative Place for Business
4. We Come Together Here
5. Reconnect with the River
6. Make it Easy to Move Around
7. Embody Guelph's Green Ambitions
8. Build Beautifully

Vision

Example Vision

Downtown Secondary Plan

Downtown Guelph: a distinct and vital urban centre nestled against the Speed River, comprised of beautiful buildings and public spaces, and surrounded by leafy neighbourhoods, where people live, work, shop, dine, play and celebrate.

Vision

Example Vision

A Vision for Guelph's Innovation District

The Guelph Innovation District (GID) is a compact, mixed use community that straddles the Eramosa River in the City's east end. The GID will serve predominately as the home of innovative, sustainable employment uses with an adjacent urban village connecting residential and compatible employment uses. The urban village is meant to be an identifiable, pedestrian oriented space, with street-related built form that supports a mix of medium and high density commercial, residential and employment uses. Important land use connections are also envisioned between the GID, as an innovation centre, the University of Guelph, as a knowledge-based research centre and the Downtown, as the City's civic hub and cultural centre, supporting the emergence of a University-Downtown-GID trinity of innovation spaces.

The GID is at once highly energetic and intimately familiar, because it showcases an entirely new approach to planning, designing, and developing urban places, and at the same time, reflects Guelph's history and celebrates the rich heritage resources of the district, including the stunning river valley, dramatic topography and views, and historic Reformatory Complex.

The GID is attractive, pedestrian-focused and human-scaled. It provides a mix of land uses at transit-supportive densities, offers meaningful places to live, work, shop, play and learn, and supports a wide range of employment and residential land uses. It protects valuable natural and cultural heritage resources while fully integrating them with the new community, features sustainable buildings and infrastructure, and works towards carbon neutrality. It makes needed connections between all modes of transportation, but in a manner that prioritizes pedestrians, cyclists and transit users over drivers, and stitches the GID into the overall fabric of the City. It is exciting and new and feels like it has been part of the City for a long time.

Transform. Connect. Community.

**When fully developed the
Clair-Maltby area
will be known for...**

Vision and Guiding Principles

- 4 Rounds of Conversation – 15 minutes each
- First 3 rounds – Guiding Principles, there are four topics, you can choose up to 3 different ones.
 - Last round – Vision, you will remain at the third station to have a conversation about the potential Vision for the Clair-Maltby area

Guiding Principles Topics

- Sustainability & Servicing
- Mobility
- Natural Heritage Network and Parks System
- Land Use, Urban Design and Cultural Heritage
- Vision Workbooks

Café Etiquette

- Write down your ideas
- Focus on what matters
- Listen to understand
- Contribute your thinking
- Speak your mind & heart
- Link & connect ideas
- Listen for insights & ask deeper questions
- It's OK to change tables

World Café Agenda

1. Guiding Principles Round 1 (15 min)
2. Guiding Principles Round 2 (15 min)
3. Guiding Principles Round 3 (15 min – including prioritization of the ideas)
4. Visioning Round (15 min)
5. Report Back (15 min)



Thank You