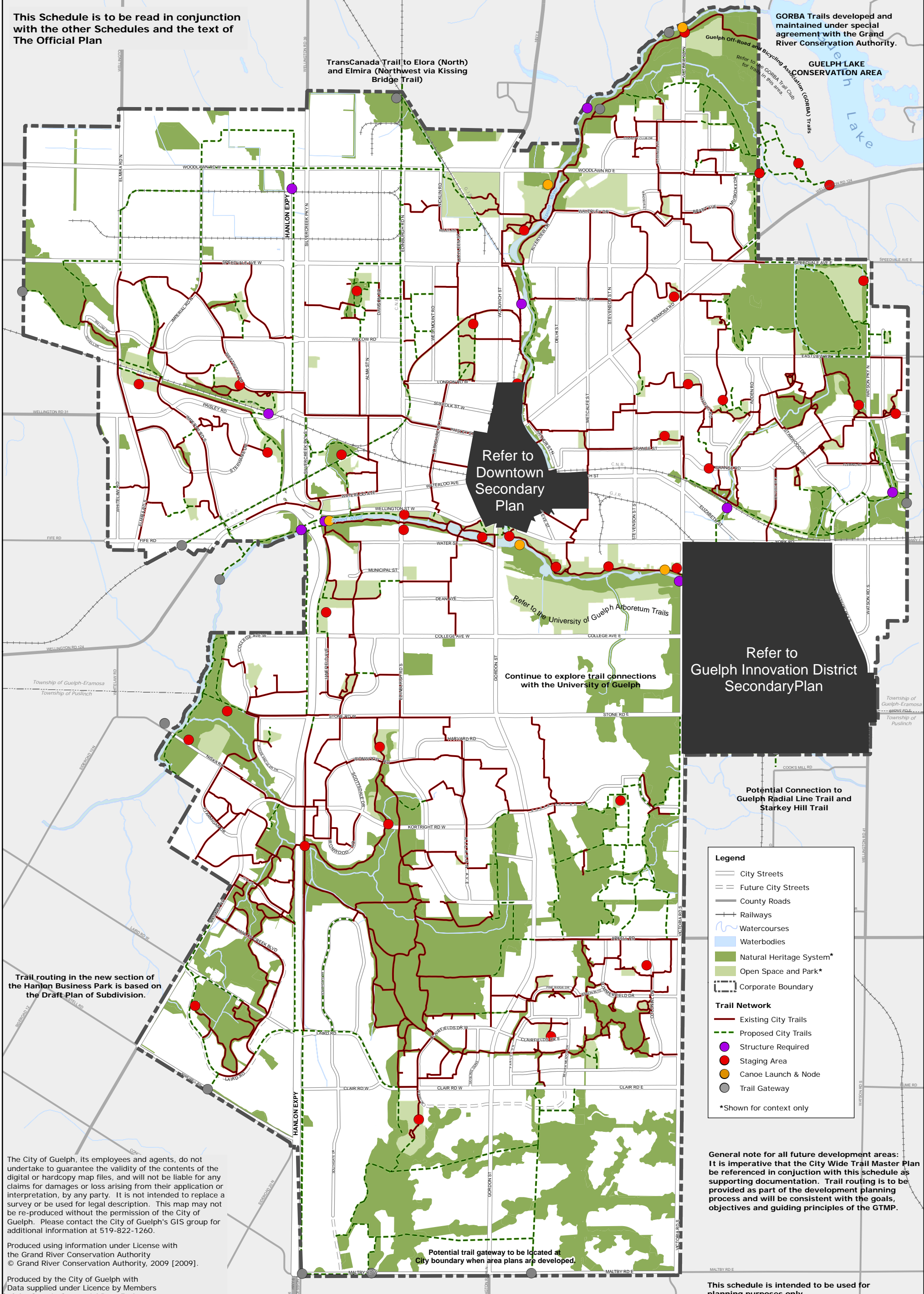


This Schedule is to be read in conjunction with the other Schedules and the text of The Official Plan



GORBA Trails developed and maintained under special agreement with the Grand River Conservation Authority.

GUELPH LAKE CONSERVATION AREA

TransCanada Trail to Elora (North) and Elmira (Northwest via Kissing Bridge Trail)

Refer to Downtown Secondary Plan

Refer to the University of Guelph Arboretum Trails

Continue to explore trail connections with the University of Guelph

Refer to Guelph Innovation District Secondary Plan

Potential Connection to Guelph Radial Line Trail and Starkey Hill Trail

Potential trail gateway to be located at City boundary when area plans are developed.

Trail routing in the new section of the Hanlon Business Park is based on the Draft Plan of Subdivision.

The City of Guelph, its employees and agents, do not undertake to guarantee the validity of the contents of the digital or hardcopy map files, and will not be liable for any claims for damages or loss arising from their application or interpretation, by any party. It is not intended to replace a survey or be used for legal description. This map may not be re-produced without the permission of the City of Guelph. Please contact the City of Guelph's GIS group for additional information at 519-822-1260.

Produced using information under License with the Grand River Conservation Authority © Grand River Conservation Authority, 2009 [2009].

Produced by the City of Guelph with Data supplied under Licence by Members of the Ontario Geospatial Data Exchange.

General note for all future development areas: It is imperative that the City Wide Trail Master Plan be referenced in conjunction with this schedule as supporting documentation. Trail routing is to be provided as part of the development planning process and will be consistent with the goals, objectives and guiding principles of the GTMP.

This schedule is intended to be used for planning purposes only.

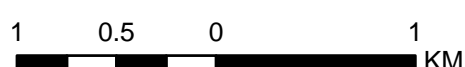
Legend

- City Streets
- - - Future City Streets
- County Roads
- Railways
- ~ Watercourses
- Waterbodies
- Natural Heritage System*
- Open Space and Park*
- Corporate Boundary

Trail Network

- Existing City Trails
- - - Proposed City Trails
- Structure Required
- Staging Area
- Canoe Launch & Node
- Trail Gateway

*Shown for context only



Projection: UTM 17N NAD83
Produced by the City of Guelph
Planning Services
September 2017 Consolidation

CITY OF GUELPH OFFICIAL PLAN

SCHEDULE 6:

OPEN SPACE SYSTEM: TRAIL NETWORK



I:\gis_staging\Planning\OFFICIAL PLAN MAPPING NEW\Schedule6\Schedule6-TrailNetwork.mxd