

PROPOSED MASTER PLANS:  
**- EASTVIEW COMMUNITY PARK**  
**- POLLINATORS' PARK**

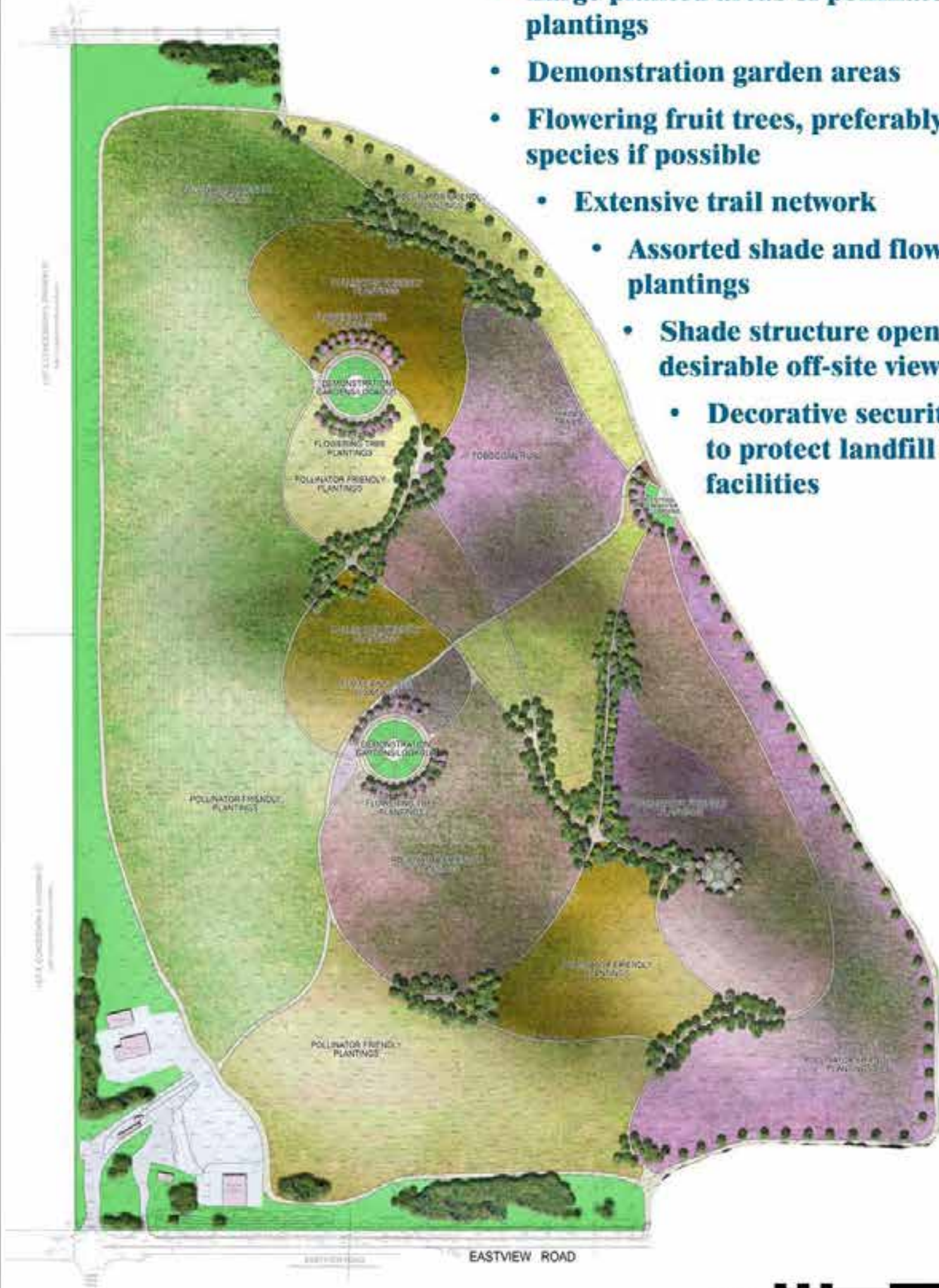


**POLLINATOR PARK**

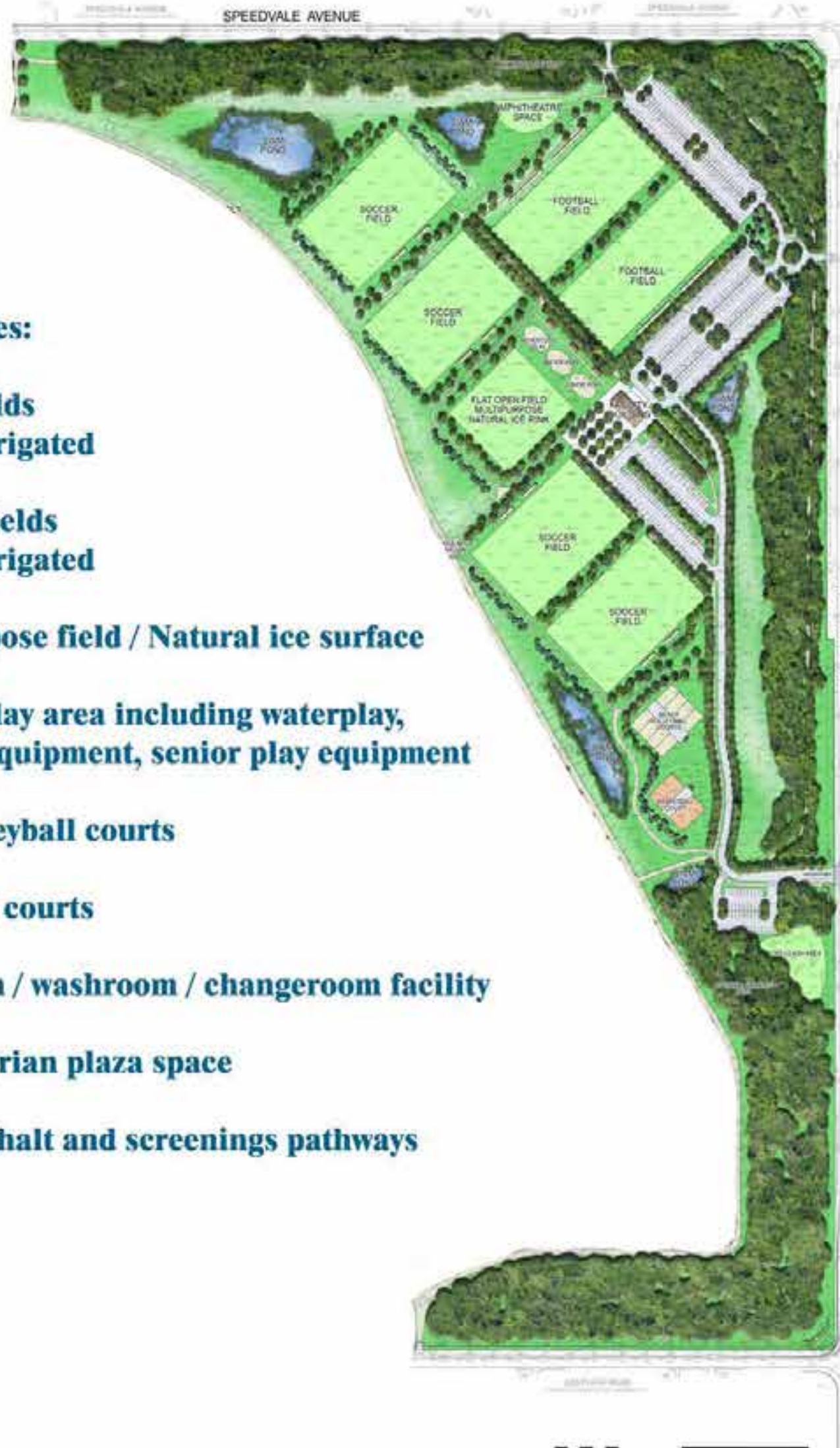


**Features:**

- **Large planted areas of pollinator friendly plantings**
- **Demonstration garden areas**
- **Flowering fruit trees, preferably heritage species if possible**
- **Extensive trail network**
- **Assorted shade and flowering tree plantings**
- **Shade structure open to desirable off-site views**
- **Decorative security structures to protect landfill monitoring facilities**



**EASTVIEW COMMUNITY PARK**



**Proposed facilities:**

- **4 Soccer Fields  
Lit and irrigated**
- **2 Football Fields  
Lit and irrigated**
- **1 Multi-purpose field / Natural ice surface**
- **Children's play area including waterplay,  
junior play equipment, senior play equipment**
- **8 Beach volleyball courts**
- **2 Basketball courts**
- **1 Concession / washroom / changeroom facility**
- **Large pedestrian plaza space**
- **Assorted asphalt and screenings pathways**

SCALE: 0 20 50 100 200m