



Guelph as a village of 100 people

Guelph is situated on treaty land that is steeped in rich indigenous history and home to many First Nations, Inuit and Métis peoples today.



A United Vision:
GUELPH'S COMMUNITY PLAN

Big numbers can be hard to relate to. Here's what Guelph looks like as a village of 100 people. In our village of 100, each person represents 1,318¹ Guelphites.

Guelph population: 131,794

19 people

have joined our village since 2001.



8 villagers are 20-24 year olds compared to the national average of 6%.

A household consists of one or more persons living in the same housing unit. They may or may not be related. Our village's households are filled like this:²

28 households are couples with children

27 households are one-person

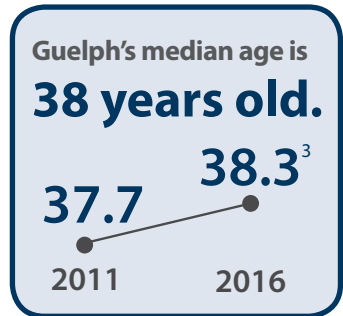
24 households are couples without children

9 are lone-parent families

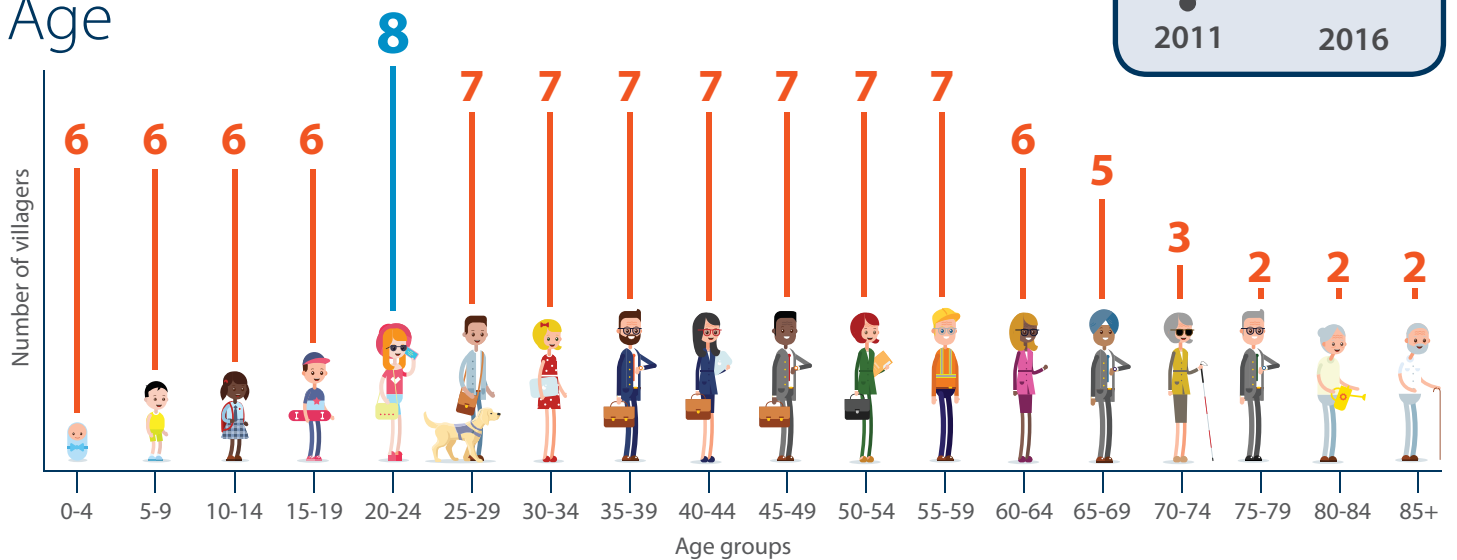
5 are two+ people residing together that are not married or related

4 identify as other

3 are multigenerational



Age



^{1,2,3} Statistics Canada, 2016 Census of Population

Income

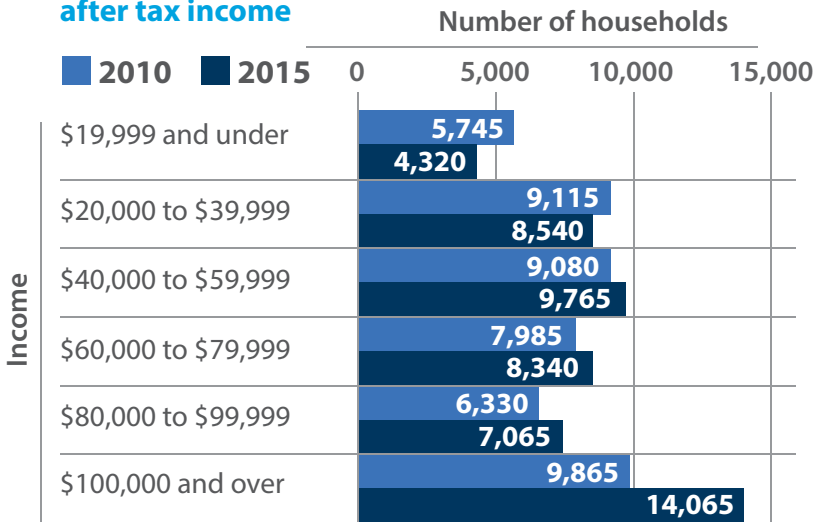
The median household after tax income of people in Guelph is \$67, 829.⁴

11
villagers
live in poverty.⁵

2015 median personal after tax income



Household after tax income

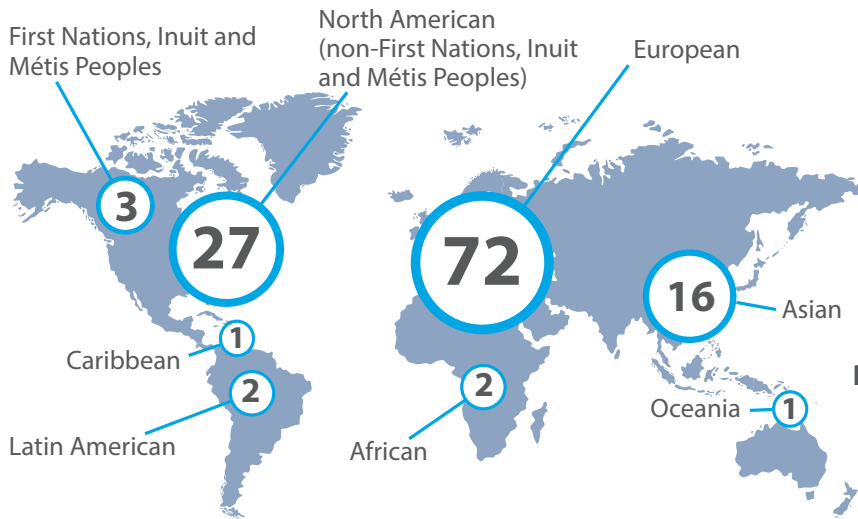


In our village 82 people are part of the working population.⁶



5
villagers
immigrated
since 2011.

Ethnic origin



Language

77⁷ villagers speak English as their mother tongue.

In addition to English, the top 5 languages spoken at home are:

- Mandarin
- Vietnamese
- Punjabi
- Italian
- French

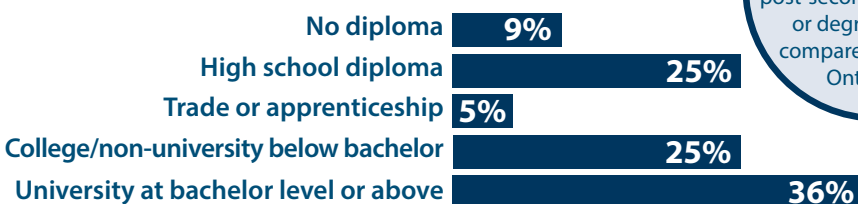
People come from many countries to live here.

Top 5 places of birth for recent immigrants to Guelph are:

- Philippines
- India
- China
- Eritrea
- Vietnam.⁸

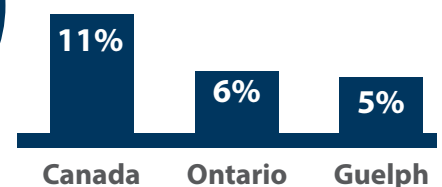
Education

Highest level of education of people 25 years or older in our village⁹



66%
of Guelphites 25 years or older had a post-secondary diploma or degree in 2016 compared to 65% of Ontarians.

Trade certificates/diplomas as highest level of education



Statistics note: Not all categories of data will add up to 100 people or per cent. In some instances we are presenting the top five or six categories, and in some cases it's due to good old rounding.

^{4, 5, 6, 7, 8, 9} Statistics Canada, 2016 Census of Population



Our village's economy

A healthy, diversified economy contributes to the vitality, vibrancy and prosperity of the people who call our village home.

Guelph has a resilient, diverse knowledge-based economy with a strong manufacturing sector that produced a quick recovery following the 2008 global recession. Guelph has a strong ecosystem of research, innovation and commercialization in agri-food.

Guelph's expected real GDP growth in 2018 is ranked 9th highest in Canada.

Guelph is 1 of only 3 Ontario cities appearing in the Top 10.

Guelph..Oshawa
Toronto

Workforce diversity

In our village 82 people are part of working population.

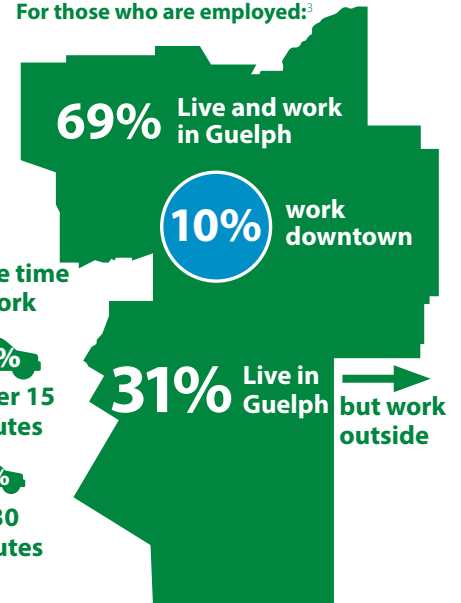
We hold a variety of different jobs¹



in different fields².



We live AND work in Guelph. For those who are employed:³



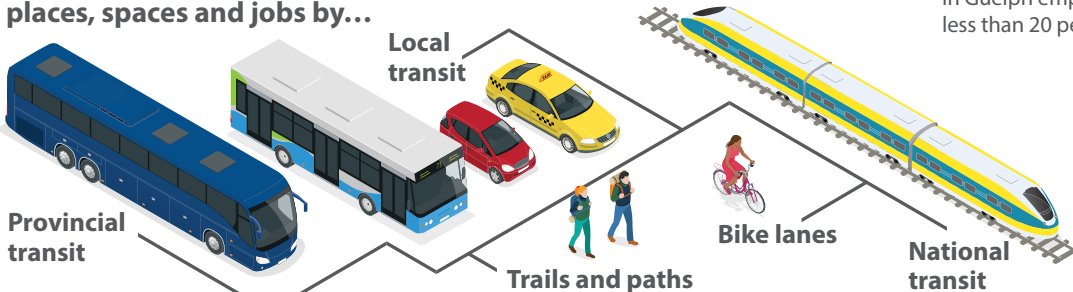
Jobs have been increasing in Guelph. Over the past five years **4,580 jobs have been created**. That's more than **900 jobs per year!** Our labour force participation rate is 70%. Guelph's participation and employment rates have been consistently higher than Ontario and Canada.

There are a total of **12,588 businesses** in Guelph of which: **8,686** are entrepreneurs and **3,902** are employers

84% of employers in Guelph employ less than 20 people.

Transportation

In our village, people are connected to other people, places, spaces and jobs by...



Guelph is 5 minutes north of the 401 by car.

^{1,2,3} Statistics Canada 2016

⁴ City of Guelph

In 2017, 6,090,486 passenger trips were taken on Guelph Transit.⁴

Innovation corridor



Guelph's **information and communication technology** sector is one of the fastest growing in Canada with a

35% increase
in labour force since 2011.⁵



7th in a national list of cities having a high concentration of **software developers.**⁶



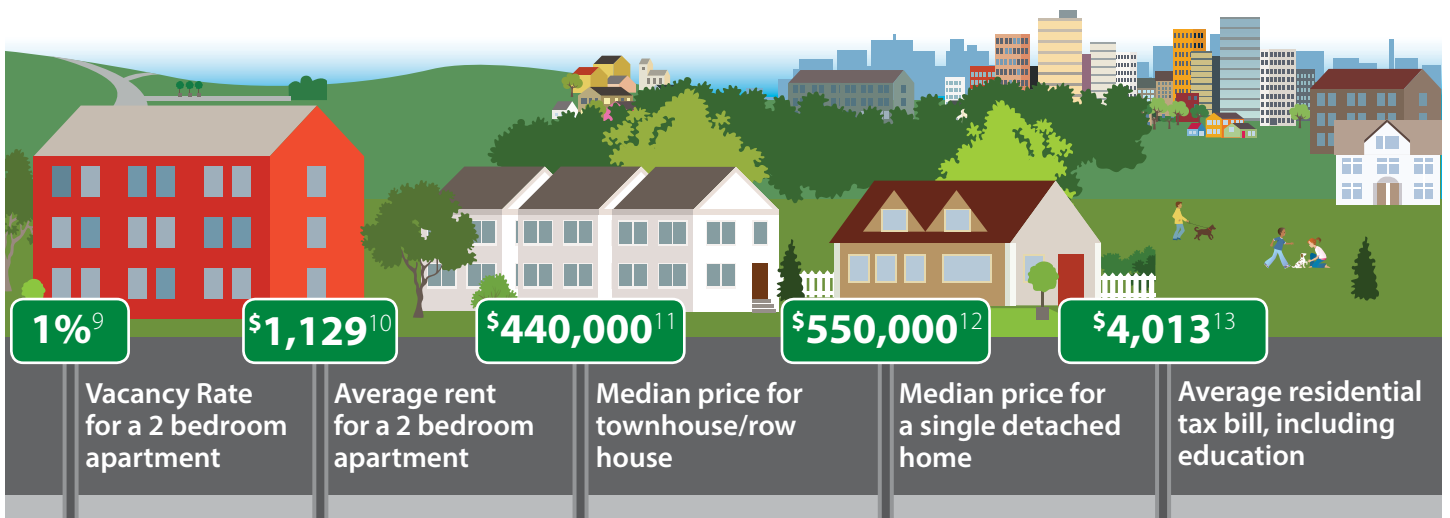
40+ **research and technical centres** focused on innovation.⁷



10 **for profit businesses** dedicated to social and environmental issues known as B Corporations.⁸



Housing



⁵ City of Guelph; derived from Statistics Canada, 2011 and 2016

⁶ Brookfield Institute 2017

⁷ City of Guelph

⁸ www.bcorporation.net, September 2018

^{9,10} CMHC, October 2017

^{11,12} CREA.ca Q2 2018

¹³ City of Guelph, 2017



Our village's environment

The health and wellbeing of the environment is important for overall human health. Guelph has a strong commitment to environmental protection and stewardship through conservation efforts.

Watershed

Guelph is part of the Grand River watershed, the largest watershed in southern Ontario. The Eramosa and Speed rivers flow through Guelph and feed into the Grand River. The Grand River watershed consists of rivers, reservoirs, forests, wetlands and grasslands that provide habitat to thousands of species of birds, fish, animals and other creatures.



Forest cover in the watershed was as low as 5 per cent in the early 1900s, but today forests cover about 19 per cent of the land.¹



The University of Guelph Arboretum encompasses 400 acres with more than 2,000 different groups of woody plants.⁵



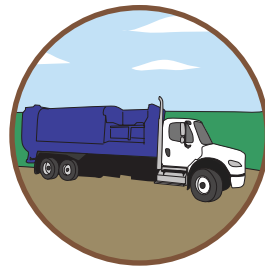
More than 90 species of fish are found in the river system, about half of all fish species in Canada.²



Guelph is one of 16 other Canadian municipalities designated as a Bee City that is committed to pollinator-friendly goals.⁶



Our village is home to 1 food forest, 1 community orchard and 22 community gardens.³



We are diverting 59 per cent of residential waste from the landfill. That's about 11 per cent higher than the average residential diversion rate for Ontario in 2017.⁷



Air quality indices rate Guelph's air quality as low risk (2) in 2017.⁴

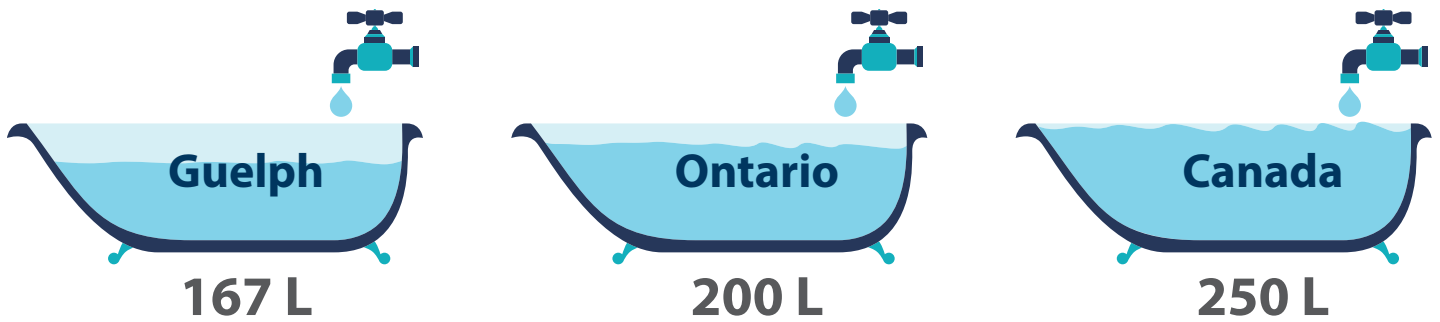


Since 2014, 3.7 million litres of water per day has been reclaimed through water conservation and efficiency programming.⁸

^{1,2} Grand River Conservation Authority
³ City of Guelph
⁴ Air Quality Ontario

⁵ Arboretum, University of Guelph
^{6,7,8} City of Guelph

Water usage per person per day⁹



Energy

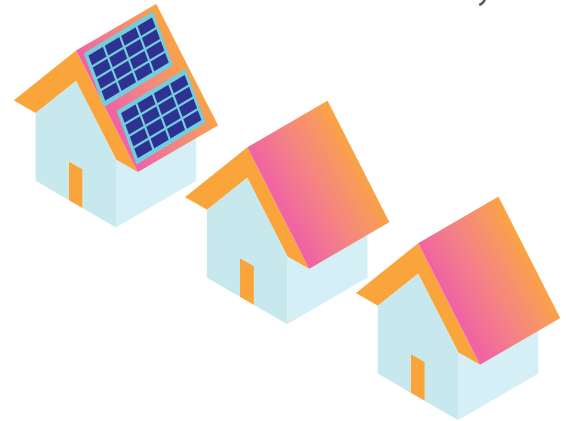
Our village is affectionately known as the solar capital of Canada.

Guelph is home to the only top-three global supplier of solar PV modules not based in China. Cool eh!

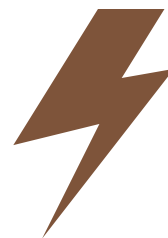
406 rooftop solar arrays

in Guelph with capacity to generate 11,114 kilowatts of renewable energy.¹⁰

Guelph has the highest adoption rate of solar panel installations nationally.



Total greenhouse gas emissions per villager in tonnes¹¹



In 2016, residential energy consumption was

27,000

kilowatt hours/household.

Guelph was one of the first Canadian communities to install an electric vehicle charging station in 2012



and there are now over

20

public charging station ports within 15 km¹²

Guelph has **10% more**

battery electric vehicles including plug-in hybrids than the provincial average.¹³

⁹ City of Guelph
¹⁰ Guelph Hydro
¹¹ City of Guelph

¹² www.chargehub.com, September 2018
¹³ Ministry of Transportation of Ontario



Arts, culture and leisure

Serving Guelph are

196 arts, entertainment and recreation businesses of which

141 are solo entrepreneurs and

55 are employers.

There are

3 villagers employed

in arts, culture, recreation and sport occupations. This has grown by 20 per cent since 2006.¹

Arts, culture, leisure and recreation activities enhance quality of life in our village. They bring about personal enjoyment, enriching perspectives, intellectual stimulation, health benefits and opportunities for public involvement. They contribute to community building and deepening social connections. In today's economy, the ability to attract and retain creative human talent is key to economic growth. Guelph's arts and culture sector is an integral part of the new economy.



2 villagers works in arts, entertainment and recreation industry²

Tourists' spending stimulates

over \$155 million in sales of goods and services.³

Tourism in 2017

 **163,205** sporting event visitors

 **49,757** festival visitors

 **38,202** conference visitors

 **61%** hotels occupancy rate



Guelph is a tourist destination.

In 2017 we greeted

1.7 million visitors who spent **\$283 million.**

Tourist spending supports the equivalent of 2,100 full-time local jobs.

^{1,2} Statistics Canada, 2016 Census of Population

³ City of Guelph, Tourism Economic Impact, Visitor Survey 2017 ©IPSOS

Active living⁴

Guelph public facilities support arts, culture and recreation programming.

over  **522,000 ft** of public facilities

 **409** events at the River Run Centre

 **2,186** hours of use at the Sleeman Centre

In 2017⁵

36,536 students grades 1 to 8 attended a performance at the River Run Centre

Over **86** festivals and community events celebrated

25+ community ice rinks

17 parades, walks and runs

97 playgrounds

18,730 participants in City recreation programs

1 carousel and amusement train

 **31,076** visits to Guelph Museums

7 splash pads

1 Market Square water feature

2 wading pools

1 outdoor pool



Civic Museum collection includes 40,000 pieces dating back to projectile points from 7500 BC.

And we read.

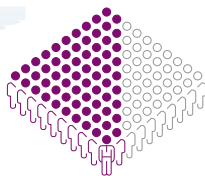
Our libraries are ranked #1 for total circulations per villager among libraries in similar sized Ontario villages, and is more than two times the Ontario average.



44 are active library card holders⁶.

63 over 12 years of age were moderately active or active in their leisure time.

This is 10 per cent higher than the Ontario average.⁸



Neighbourhood groups play a special role in Guelph to support inclusion in arts and culture.

52,063 Guelphites participated in **262** programs delivered with the help of **1,511** volunteers through **13** neighbourhood groups.⁷

1,181 children received subsidies to participate in **1,930** recreation activities.

The average household income of applicants was **\$18,350** per year.⁹

^{4,5} City of Guelph

⁶ Molyneux, R., Abram, S. (2017). Federation of Ontario Public Libraries

⁷ Guelph Neighbourhood Support Coalition

⁸ Statistics Canada, Canadian Community Health Survey

⁹ Children's Foundation of Guelph and Wellington

Social services, health and education

Every villager should be free to participate in the community without barriers to education, employment and health. Guelph has a long history of collaborating across community organizations and levels of government to provide services and support for people struggling with mental illness, substance use, poverty, and homelessness.

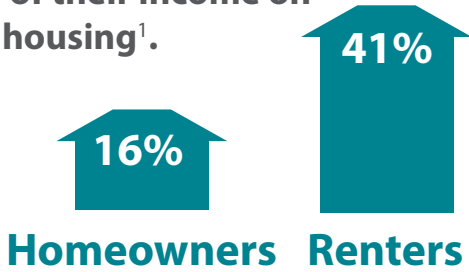
Housing

In May 2018, 264 people experiencing homelessness were counted in Guelph.²

12 villagers

are living in housing that is not adequate, suitable or affordable.³

Many villagers spend more than 30 per cent of their income on housing¹.



Physical and Mental Health

In our village...

67 villagers 😊

rated their mental health as "very good" or "excellent" in 2013/14. This rating is 10% lower than in 2009/10.⁴

In 2013-14

1/3 of women and

1/5 of men

rated most of their days as quite a bit or extremely stressful.⁵

¹ Statistics Canada, 2016 Census of Population

² Everyone Counts 2018, Guelph Wellington Point in Time Count

³ City of Guelph

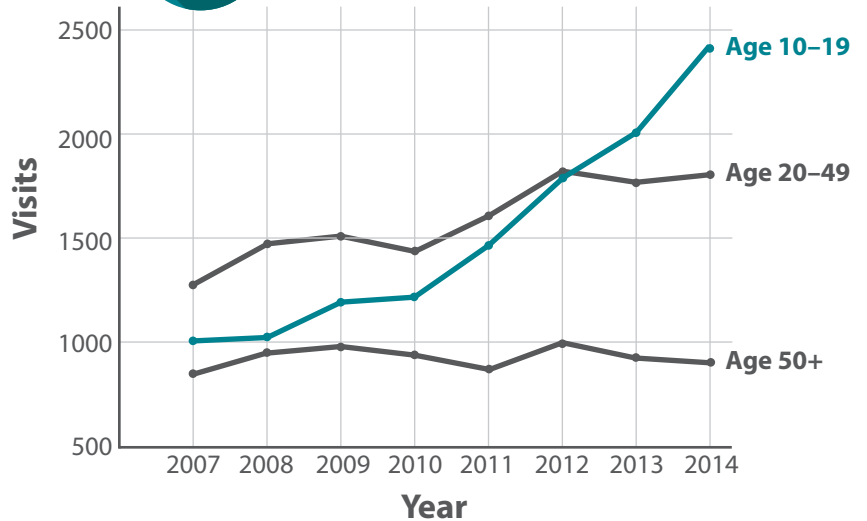
⁴ Statistics Canada, Canadian Community Health Survey

^{5,6} Wellington, Dufferin and Guelph Public Health

^{7,8} Statistics Canada, Canadian Survey on Disability, 2012



Emergency room visits related to mental health concerns



46% of students in grades 7 and 10 have a high level of positive mental health.⁶

1 in 7 Canadians aged 15 years and older report having a disability.⁷

The average age of onset of disabilities reported is the early 40s.⁸

From 2011-14

33 villagers

over the age of 18 were considered overweight⁹

15 villagers

were considered obese¹⁰

From 2013-14...



62 villagers

self-rated their physical health as very good or excellent.¹¹



43 villagers

eat fruit and vegetables five or more times per day.¹²

Food

Each week a healthy food basket for a family of four costs¹³ ...



From 2012-14...

17% of households

in Guelph faced some level of food insecurity with inadequate or insecure access to food because of financial constraints.¹⁴



Risky Behaviours

(alcohol, opioid and other drugs)

In our village...

People in Guelph are more likely to take part in high risk drinking behaviour than the Ontario average. A higher proportion of Guelph residents (83%) drink compared to the Ontario average (72%).¹⁷



75 visits per 100,000 people

to the emergency department for opioid poisoning in 2017. That's higher than the Ontario average of 55 visits.¹⁵



Marijuana and Hashish use

2009-2012

Ages 12-19  **22%**

report having used marijuana/hashish in the past 12 months.¹⁶

Ages 20-34  **29%**

^{9,10,11,12} Statistics Canada, Canadian Community Health Survey

¹³ Needham, L. (2017). Nutritious Food Basket for Wellington, Dufferin Guelph Public Health

¹⁴ Statistics Canada, Canadian Community Health Survey

¹⁵ Calculated per 100,000 people. National Ambulatory Care Report System 2003 - 2016. Ontario Ministry of Health and Long Term Care

¹⁶ Statistics Canada, Canadian Community Health Survey

¹⁷ Wellington Dufferin Guelph Public Health, 2015

Childcare

22

village children ages 0 to 4 years

have access to centre-based licensed child care spaces.¹⁸



Education

46 elementary schools



11 secondary schools

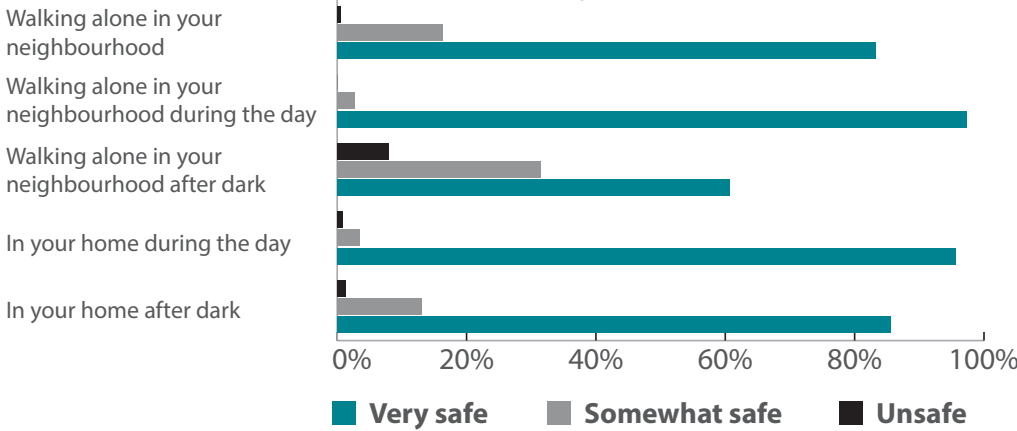
1 university

1 college campus

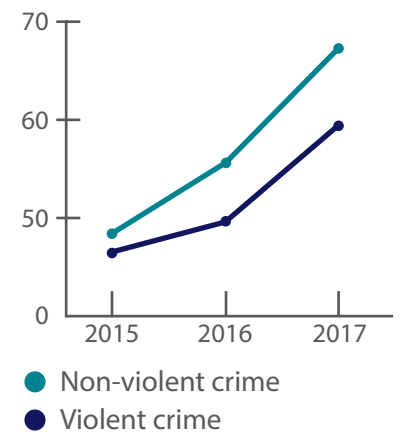


Safety and Security

In our village, we generally feel safe.¹⁹



Crime Severity Index Rating.²⁰



Quality of Life²¹

97 villagers perceive good to very good quality of life.

94 villagers are proud to say they are from Guelph.

88 villagers have a strong sense of belonging.

Guelph is a member of the Global Network of Age Friendly Communities and a Play Works' gold designation Youth Friendly Community



¹⁸ Wellington County

¹⁹ How safe do you feel? Guelph Police Community Survey, 2015

²⁰ Statistics Canada, Canadian Centre for Justice Statistics, Uniform Crime Reporting Survey

²¹ City of Guelph Citizen Survey, 2017

guelph.ca/communityplan
makeyourmark@guelph.ca
[#makeyourmark](https://twitter.com/makeyourmark)



Accessible formats available by calling 519-822-1260 extension 3356 or TTY 519-826-9771.