

INFORMATION ITEMS

Week Ending December 13, 2013

REPORTS

1. Update Annual & Summary Water Services Report (compliance)

CORRESPONDENCE

1. Ministry of Transportation – Notice of Study Commencement, Highway 7 Rehabilitation from Guelph to Rockwood, Guelph-Eramosa Township
2. Woodlawn Memorial Park – Thank you to Guelph Fire Services for participation in Remembrance Day service
3. United Counties of Prescott and Russell – Resolution regarding an amendment to the Aggregate Resources Act for peat moss extraction

BOARDS & COMMITTEES

1. GRCA – Current, December 2013 Issue

ITEMS AVAILABLE IN THE CLERK'S OFFICE

1. None

INFORMATION REPORT



TO City Council

SERVICE AREA Planning, Building, Engineering and Environment

DATE December 12, 2013

**SUBJECT Update Annual & Summary Water Services Report
(compliance)**

REPORT NUMBER

EXECUTIVE SUMMARY

SUMMARY OF REPORT

This report is a compilation of information that demonstrates to the Owner and all stakeholders the ongoing delivery of an adequate and safe supply of drinking water to customers located within the City of Guelph Drinking Water System (Guelph DWS) and the Gazer Mooney Subdivision Distribution System (Gazer Mooney SDS, located in the Township of Guelph/Eramosa). Through this report, system owners, senior leaders, and customers are informed of the performance of the Water Services Department for the period January 1 to June 30, 2013.

This update report is normally provided in October of each year. Due to the timing of a detailed provincial inspection of Water Services and the time required to reformat the attached **Water Services Annual & Summary Report Card**, this information report is submitted later than normal.

KEY FINDINGS

Key findings are summarized in bullet form under the "Report" section of this information report. The top three key findings include:

- Water Services had no health-related exceedances of provincial water quality parameters;
- Water Services took every reasonable precaution and effort to comply with all provincial regulations and obtained a score of 96.4% (Guelph DWS) and 100% (Gazer Mooney SDS) in the 2012 Annual Inspection by the Ontario Ministry of the Environment (MOE);
- Water Services (as the Operating Authority) maintained the requirements for Accreditation, as required under the provincial Municipal Drinking Water Licensing Program, with no significant issues.

FINANCIAL IMPLICATIONS

All financial implications related to this report are already accounted for in the Water Services Operating and Capital Budgets.

INFORMATION REPORT

BACKGROUND

In conformance with our **Quality Management System 12-01 Reporting to Owner** policy, Water Services is presenting information to support the Owner's compliance with section 19 of the **Safe Drinking Water Act, 2002: Standard of care, municipal drinking water system**. The "Owner" is defined as City Council plus the CAO.

REPORT

Water Services is requesting that the Owners review the attached **Water Services Annual & Summary Report Card**. The full report is available on the City's website at: www.guelph.ca/water. Click on "Learn more about drinking water", then "Water quality" and the link for "Annual and Summary Water Services Report Update - 2013".

Significant highlights of the report for Council's consideration are as follows:

- Water Services had no health-related exceedances of provincial water quality parameters;
- Water Services took every reasonable precaution and effort to comply with all provincial regulations and obtained a score of 96.4% (Guelph DWS) and 100% (Gazer Mooney SDS) in the 2012 Annual Inspection by the Ontario Ministry of the Environment (MOE);
- Water Services (as the Operating Authority) maintained the requirements for Accreditation, as required under the provincial Municipal Drinking Water Licensing Program, with no significant issues;
- All regulatory microbiological and chemical quality samples were taken by certified operators;
- All tests were performed by accredited, licensed laboratories on water samples collected throughout the drinking water system;
- The system provided approximately 8.04 million cubic meters (8.04 billion litres) in 2012;
- Implementation of SDWA s.19 "Standard of Care" - Please note that on December 31, 2012, Standard of Care provisions under Section 19 of the Safe Drinking Water Act (SDWA), 2002, came into force. City staff, the Mayor and Council received training on this subject in 2011;
- Water Services experienced one incident of "non-compliance" when UV Treatment was shutdown for less than 10 minutes (see section A) of the attached report) - chlorination disinfection remained unaffected through the shutdown. Under Ministry of the Environment Technical Guidance Documents this event is not considered "adverse"; and
- Water Services experienced one event that was considered "adverse water quality incident" as defined by the Safe Drinking Water Act that was resolved satisfactorily (see section B) in the attached report).

INFORMATION REPORT

CORPORATE STRATEGIC PLAN

- 1.2 Develop collaborative work teams and apply whole systems thinking to deliver creative solutions;
- 2.2 Deliver public services better;
- 2.3 Ensure accountability, transparency and engagement;
- 3.1 Ensure a well designed, safe, inclusive, appealing and sustainable City.

DEPARTMENTAL CONSULTATION

Feedback from Water Services staff (e.g. management, supervisory, compliance, and technical) was requested on the contents of this report. Comments and feedback submitted have been incorporated into this report.

COMMUNICATIONS

Water Services will continue to make regular reports to Council (i.e. the drinking water system Owners) on the continuing suitability, adequacy and effectiveness of Water Services' quality management system to ensure the ongoing delivery of an adequate and safe supply of drinking water.

ATTACHMENTS

Water Services Annual & Summary Report Card

Report Author

Brigitte Roth
Quality Assurance Coordinator
519-822-1260 x 2195
brigitte.roth@guelph.ca



Approved By

Peter Busatto
General Manager
Water Services
519-822-1260 x 2165
peter.busatto@guelph.ca



Recommended By

Janet Laird, Ph.D.
Executive Director
Planning, Building, Engineering
and Environment
519-822-1260 x 2237
janet.laird@guelph.ca



2013 update

Water Services Annual & Summary Report Card



INTRODUCTION

The purpose of this report card is to provide a high-level summary of the 2013 Annual & Summary Update Report to several stakeholders. The full version of this update report can be accessed online at www.guelph.ca/water.

Any inquiries can be made by e-mailing waterservices@guelph.ca or by calling 519-837-5627.

This report card includes information from both the **Guelph Drinking Water System** and the **Gazer Mooney Subdivision Distribution System** for the period of Jan.1 to Jun. 30, 2013 (unless otherwise noted). This report provides information related to responsibilities, scope and accomplishments of the Water Services division. This report also illustrates performance through dashboard and scorecard reporting on key performance indicators.

REPORT CONTENTS

INTRODUCTION	1
GOVERNANCE STRUCTURE	2
OUR DIVISION	3
OUR ROLE	4
PERFORMANCE SCORECARDS	6
DEFINITIONS.....	6
A) INCIDENTS OF REGULATORY NON-COMPLIANCE.....	7
B) INCIDENTS OF ADVERSE DRINKING WATER TESTS.....	7
C) DEVIATIONS FROM CRITICAL CONTROL POINT (CCP) LIMITS AND RESPONSE ACTIONS.....	8
D) THE EFFICACY OF THE RISK ASSESSMENT PROCESS.....	8
E) INTERNAL AND THIRD-PARTY AUDIT RESULTS.....	10
F) RESULTS OF EMERGENCY RESPONSE TESTING.....	10
G) OPERATIONAL PERFORMANCE AND STATISTICS.....	11
H) RAW AND TREATED WATER QUALITY.....	15
I) TREATED WATER QUALITY – GAZER MOONEY SUBDIVISION DISTRIBUTION SYSTEM.....	17
J) STATUS OF ONGOING AND EMERGING WATER QUALITY / SUPPLY INITIATIVES.....	17
K) EXPECTED FUTURE CHANGES THAT COULD AFFECT THE DWS OR THE QMS.....	18
L) CONSUMER FEEDBACK.....	20
M) RESOURCES NEEDED TO MAINTAIN THE QMS.....	20
N) THE RESULTS OF INFRASTRUCTURE REVIEW.....	20
O) OPERATIONAL PLAN CURRENCY, CONTENT AND UPDATES.....	22
P) STAFF SUGGESTIONS.....	22
WATER SERVICES' KEY CHALLENGES	23

GOVERNANCE STRUCTURE

The governance structure at the City of Guelph has the departments reporting through standing committees to City Council.

The Water Services Department of the Planning, Building, Engineering and Environment Service Area reports through the Planning, Building, Engineering and Environment (PBEE) Committee to City Council.

According to the 2012 HR Annual Report, PBEE has 31% of the corporation's staff.

City Council

Planning, Building, Engineering and Environment Committee

Planning, Building, Engineering and Environment Service Area

Planning Services

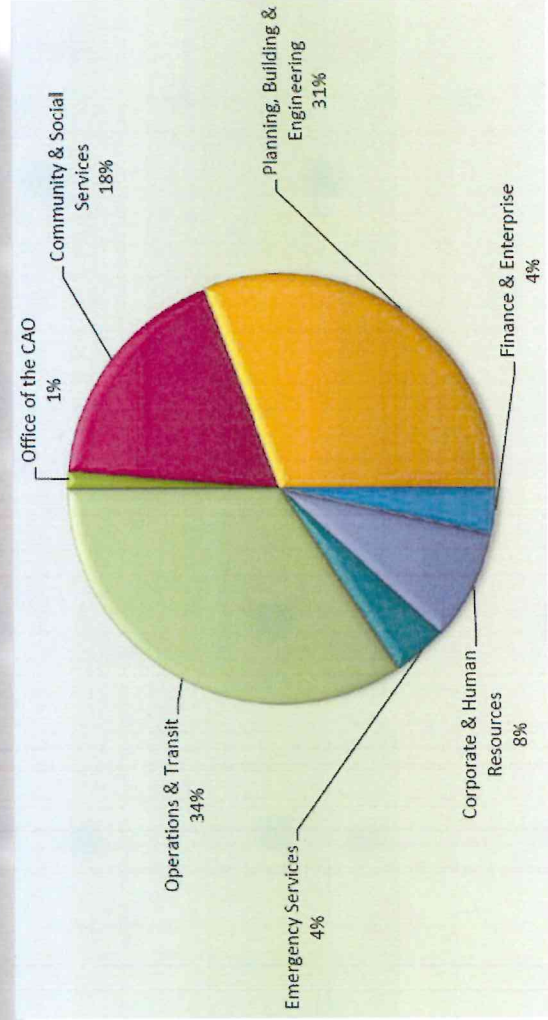
Building Services

Engineering Services

Solid Waste Resources

Wastewater Services

Water Services



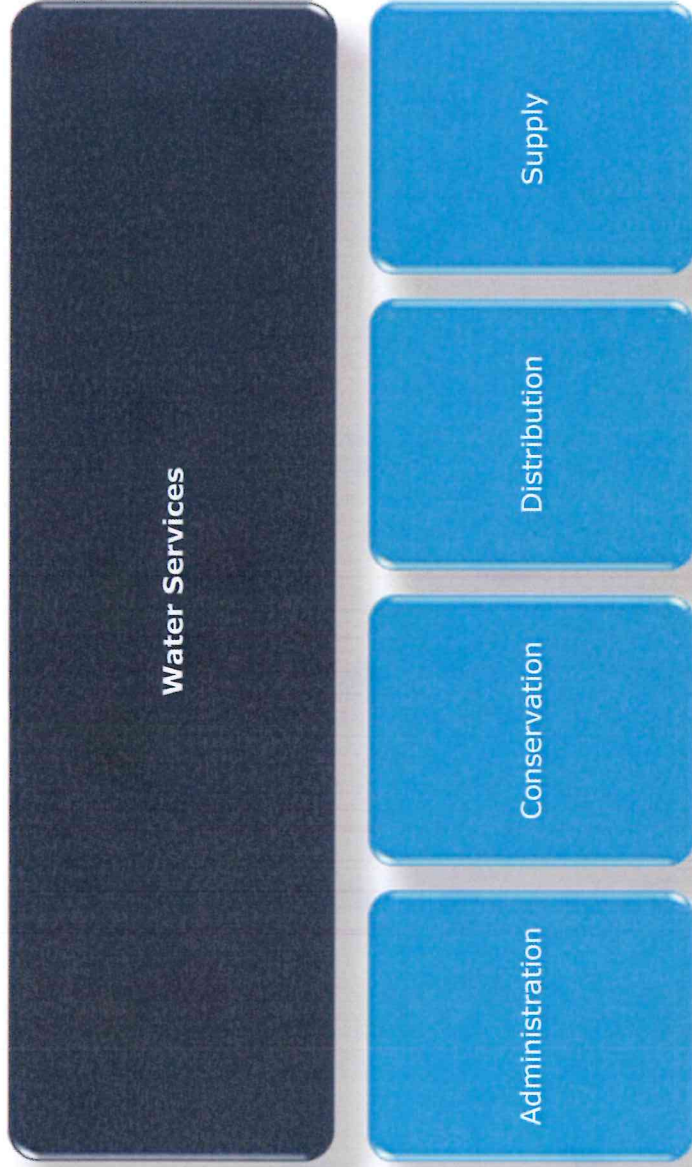
Owner (City Council) oversight of Water Services' major policy areas and programs include:

- Financial Plans
- Budgets – Resources and Staffing
- Infrastructure Master Planning
- Major Programs
- Emergency Response
- Customer Service

OUR DIVISION

Water Services is comprised of four functional areas as shown in Water Services' Organizational Structure.

Water Services' Organizational Structure



Safe Drinking Water is a shared responsibility between

- **The Province:**
 - o the Ministry of the ENVIRONMENT and
 - o the Ministry of HEALTH AND LONG-TERM CARE
- **Public Health:**
 - o Wellington-Dufferin-Guelph Public Health (WDGPH)
- **The Municipality's Drinking Water System Owner:**
 - o City of Guelph Council and CAO (Guelph Drinking Water System)
 - o Township of Guelph / Eramosa (Gazer Mooney Sub. Dist. Syst.)
- **The Operating Authority:**
 - o Guelph Water Services (Accredited Operating Authority)



OUR ROLE

This section illustrates the scope of responsibility and activities conducted by Water Services.

1. Source Water Protection

- Grand River Source Protection Plan
- Source Water Protection Program
- Arkell Afforestation Project (26,625 trees planted since 2007)
- Water Conservation & Efficiency Strategy

- o Residential Rebate Programs
- o Blue Built Home
- o ICI Capacity Buyback
- o New Water Wagon
- o "H2O GO Festival"
- o "Ideas that Hold Water"

Outside Water Use By-law

Leak Detection Program identified 609 m³/day

3. Secure Distribution

- 6.38 kms aqueduct;
- ~ 50 million litres water storage capacity:
 - o 5 storage reservoirs (~ 48 million litres);
 - o 3 water towers (~ 11.2 million litres);
- 545 kms watermain;
- 4,015 watermain valves;
- 2,660 fire hydrants;
- 40,583 water services and water meters;
- 2,554 ICI and multi-residential buildings and structures with:

- o 5,922 backflow prevention devices
- o 1,725 premise isolations.

2. Effective Treatment

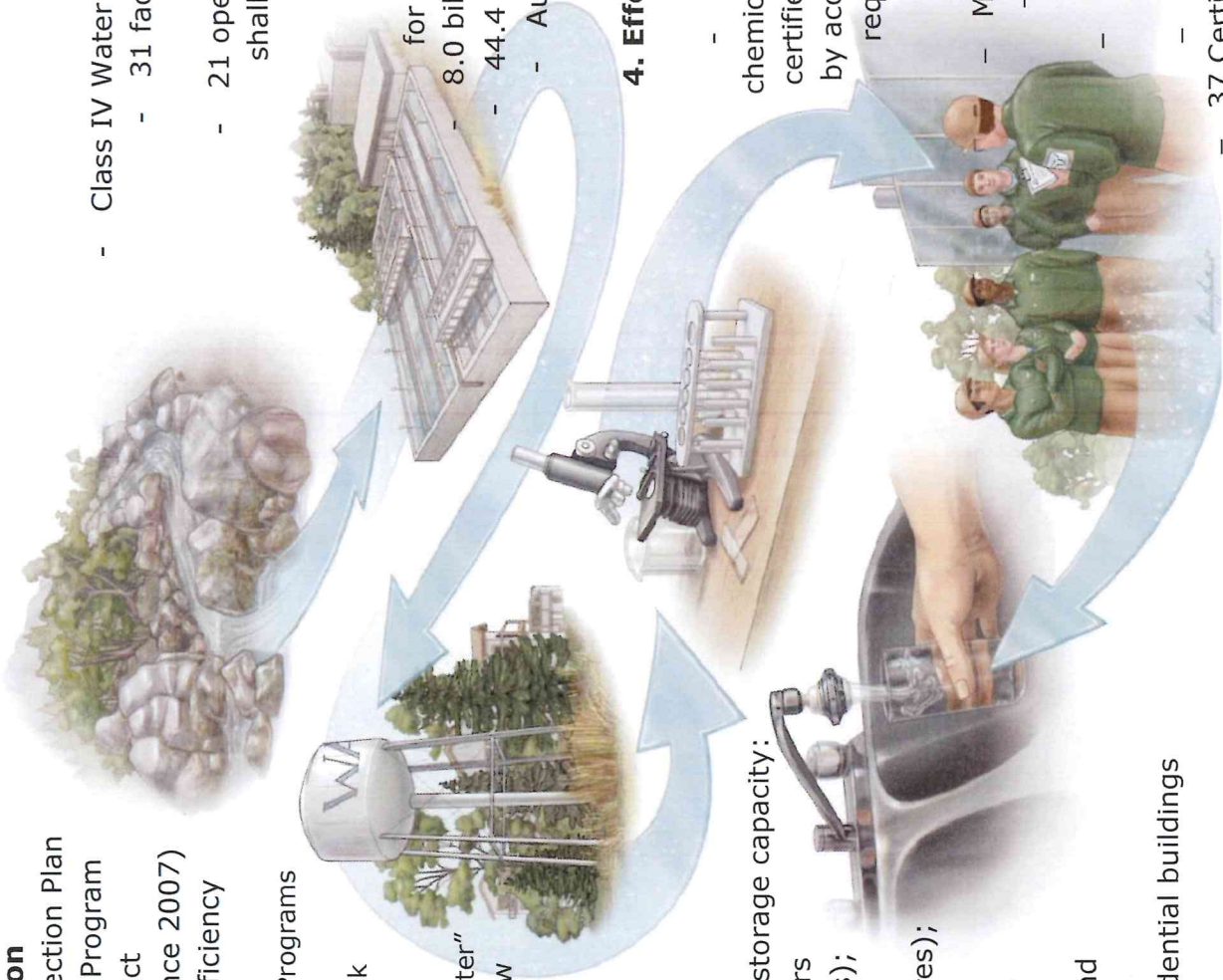
- Class IV Water Distribution & Supply Subsystem
- 31 facilities for water: sources, supply, treatment, storage or transfer
- 21 operational groundwater wells and a shallow groundwater collector system
 - 10 sites use chlorination for primary disinfection
 - 3 sites use UV + chlorination for multi-barrier primary disinfection
- 8.0 billion litres treated (Jan. 1-Jun 30)
- 44.4 million litres (avg. daily demand)
- Automation & redundancies built-in

4. Effective Monitoring & Reporting

- Continuous monitoring
- all regulatory microbiological and chemical quality samples were taken by certified operators and tests performed by accredited, licensed laboratories, as required by Safe Drinking Water Act

5. Effective Management

- Municipal Drinking Water Licence,
- Drinking Water Works Permit,
 - Permits to Take Water,
- Financial & Infrastructure Plans,
 - DWQMS Accreditation,
 - Risk & Emergency Management,
- 37 Certified Operators & 24/7 coverage,
- NSF Certification of parts & chemicals,
 - Continual Improvement.



Map of Guelph's Drinking Water System

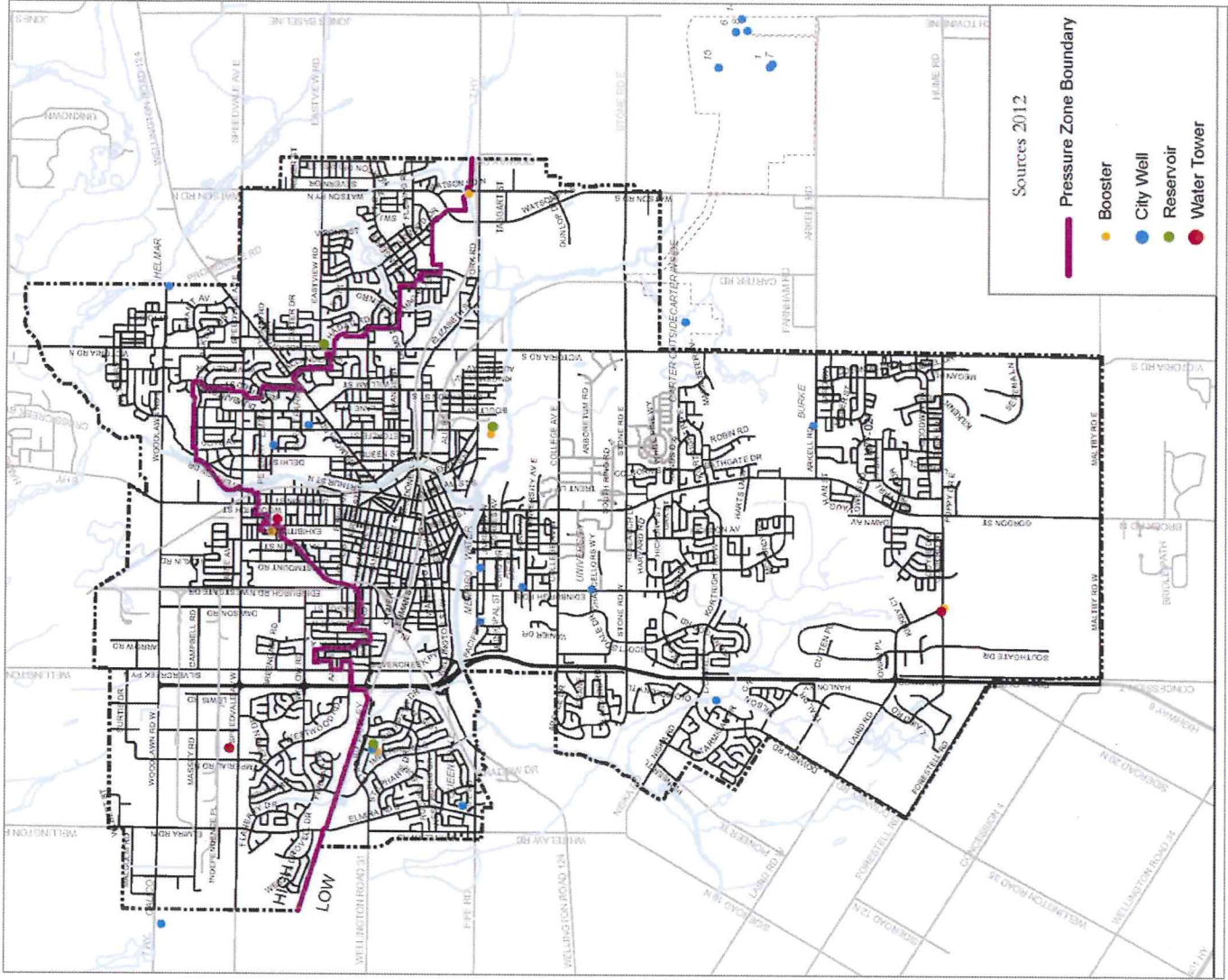
The map included on this page depicts the two pressure zones that exist in Guelph's Drinking Water System, along with the location of booster stations, wells, reservoirs and water towers.

There are two main water sources for Guelph's drinking water system:

- True groundwater, requiring chlorination and
- GUDI-WEF, requiring chlorination + UV (groundwater under the direct influence of surface water with effective in-situ filtration)

Owners and Operating Authorities are responsible for ensuring their drinking water systems:

- Provide water that meets all drinking water quality standards.
- Operate in accordance with the Safe Drinking Water Act and its regulations.
- Are kept in a fit state of repair.
- Are appropriately staffed and supervised by qualified persons.
- Comply with all sampling, testing and monitoring requirements.
- Meet all notification and reporting requirements.



PERFORMANCE SCORECARDS

The performance scorecards for Water Services consist of both KPIs and Statistics. Both types of measurements are needed to effectively manage the division. Additional information is included in the full version of this update report that can be accessed online at www.guelph.ca/water. Performance summaries are provided in the following categories:

- a) Incidents of Regulatory Non-Compliance
- b) Incidents of Adverse Drinking-Water Tests
- c) Deviations from Critical Control Point (CCP) Limits and Response Actions
- d) The Efficacy of the Risk Assessment Process
- e) Internal and Third-Party Audit Results
- f) Results of Emergency Response Testing
- g) Operational Performance and Statistics
- h) Raw and Treated Water Quality – Guelph Drinking Water System
- i) Treated Water Quality – Gazer Mooney Subdivision Distribution System
- j) Status of Ongoing and Emerging Water Quality/Supply Initiatives
- k) Expected Future Changes That Could Affect the DWS or the QMS
- l) Consumer Feedback
- m) The Resources Needed to Maintain the QMS
- n) The Results of Infrastructure Review
- o) Operational Plan Currency, Content and Updates
- p) Staff Suggestions

DEFINITIONS

Key Performance Indicator (KPI): A measurement of the degree or status of progress towards goals and objectives. It is a measurement that you can impact.

Statistic: A measurement that provides information on trends or events. You often have minimal impact on statistics, such as number of customer calls or quantity of visits. Statistics inform activity that can impact the key performance indicators.

Status:



The results are positive and within target, no action is necessary.



The results are in range of the target, but not yet achieving target, some mitigating action may be necessary.



The results are outside the target range and corrective actions/initiatives are required to correct performance.

A) INCIDENTS OF REGULATORY NON-COMPLIANCE

The most recent assessment of compliance for the Guelph Drinking Water System as determined by the MOE during the 2012 Annual Inspection resulted in an assessment score of 96.4 per cent (compliance); and for the Gazer Mooney Subdivision Distribution System, an assessment score of 100 per cent (compliance).

There was one incident of non-compliance associated with the Guelph Drinking Water System in (Jan. 01 to Jun. 30):

- On Apr. 12, 2013 there was an extended power outage related to the "ice storm" that caused a UV treatment failure for less than 10 minutes.

B) INCIDENTS OF ADVERSE DRINKING WATER TESTS

"Adverse Water Quality Incidents" (AWQI) refers to any unusual test result from treated water that does not meet a provincial water quality standard or situation where disinfection of the water may be compromised. An AWQI indicates that on at least one occasion, a water quality standard was not met. From Jan. 1 – Jun. 30, 2013, there was one adverse water quality incident (AWQI) and a summary is included below. There were no AWQI's in the Gazer Mooney Subdivision Distribution System.

#	Date	AWQI #	Location	Description	Corrective Action	Resample Results	Deviation from Critical Control Point
1	May 21	111141	F.M. Woods Sample Tap (D0252)	Overgrown background colony, and therefore any Total Coliform (TC) and E. coli (EC) if present, could not be properly measured from a distribution system sample.	Wellington-Dufferin-Guelph Public Health (WDGPH), MOE, and Spills Action Centre (SAC) notified. Re-sample results showed zero counts of TC, E. coli and background at upstream and downstream locations (including S051, D006, and D212 sample locations). No further action required.	Yes	No

C) DEVIATIONS FROM CRITICAL CONTROL POINT (CCP) LIMITS AND RESPONSE ACTIONS

This section describes any deviation from essential steps or points in the drinking water system at which control can be applied to prevent or eliminate a drinking water hazard or to reduce it to an acceptable level. These essential steps or points are known as critical control points (CCPs). CCPs are used to identify control measures to address hazards and hazardous events. CCPs are in part stipulated by regulation and in part derived through risk assessment of the Drinking Water System. Deviations from the CCPs are reported to both the Owners and Top Management, and are summarized in the tables included in Section B) Incidents of Adverse Drinking Water Tests. **There were no confirmed deviations from CCP Limits in 2013 from January to June.**

Water Services' Critical Control Points include:

- primary disinfection,
- secondary disinfection, and
- backflow prevention.

D) THE EFFICACY OF THE RISK ASSESSMENT PROCESS

This section confirms the occurrence of reviews of the risk assessment process to determine the effectiveness of the process in identifying and appropriately assessing the risk of hazardous events and hazards, and in identifying the appropriate control measures, critical control points (CCPs) and related critical control limits (CCLs).

The annual risk assessment review described in "QMS 07 Risk Assessment" was conducted by members of Water Services' Continuous Improvement Team on Jan. 22, 2013, subsequently approved at a Management Review Meeting on Feb. 13, 2013 and presented in the "Executive Summary of Risk Assessment Outcomes" table:

RISK IDENTIFICATION		RISK RATING*	EFFECTIVE RISK MANAGEMENT		
Process	Hazardous Event		City Physical Control Measures	City Operational Control Measures	External Control Measures (if applicable)
Water Supply	Source Degradation & Contamination	Moderate	Not Within City Control	+	Private Contamination Sources Regulated by Ontario Ministry of the Environment (Ontario Environmental Protection Act, Source Protection Plans)
	Private Contamination Sources	Moderate			Ontario Environmental Protection Act, Source Protection Plans
Treatment (Chlorination at all sites + UV disinfection where applicable)	City Contamination Sources	Moderate			
	Source Water Infrastructure Failures	Moderate	+		
	Inadequate Chemical Supply	Low			NSF Certification of Chemicals
	Treatment Infrastructure Failure	Low			
	Insufficient Primary Disinfection	Moderate			
Storage	Insufficient Secondary Disinfection	Low	+	+	
	Storage Infrastructure Failure	Low			
Distribution	Distribution Infrastructure Failure	Moderate	+		
	Cross-connection or backflow	Moderate	+	+	Ontario Environmental Protection Act, Source Protection Plans
	Insufficient Secondary Disinfection	Moderate	+	+	
Security	Unauthorized Entry	Low	+		
Monitoring & Reporting	Failure of Monitoring Equipment	Low			
Power	Power Failure	Moderate			Mutual Assistance Agreements

*Risk Ratings are based on the risk calculation (likelihood rating x consequence rating), as included in the "QMS 08 Risk Assessment Outcome" document: "Low" risk: 1 to 5; "Moderate" risk: 6 to 11; "High" risk: 12 or higher

Items in the "Effective Risk Management" section of the table with **GREEN** highlights indicate that Water Services has determined there are sufficient control measures to adequately control the risks. Items highlighted in **YELLOW** and **RED** indicate risk areas that are not sufficiently addressed through existing control measures, and require additional work.

+ - Improvement being made

E) INTERNAL AND THIRD-PARTY AUDIT RESULTS

Internal auditing and third-party auditing is performed to fulfill the mandatory requirements of the Drinking Water Quality Management Standard (DWQMS). The internal audit is completed using trained internal staff. The purpose of audits is to evaluate the level of conformance of Water Services to the DWQMS. Audits identify both conformance and non-conformance with the DWQMS as well as opportunities for improvement.

The 2013 internal process audits were completed on Apr. 29 to May 10, 2013. Internal audit findings identified were related to improving the control of documents and records (QMS 05) related to essential supplies and services (QMS 13). Various opportunities for improvement suggested by staff were also noted in the internal audit report.

Third-party external on-site audits were completed on Jun. 12 to Jun. 14, 2013. External audit findings identified were related to Water Services' verification / calibration process for handheld instrumentation (QMS 17) and QMS Record requirements of Management Review Meetings (QMS 20). Appropriate corrective actions were implemented and approved by the auditor. These corrective actions will be verified for effectiveness by the auditor at the next on-site audit June 11-13, 2014.

F) RESULTS OF EMERGENCY RESPONSE TESTING

Emergency response testing is regularly completed as a component covered by the Water Services' Quality Management System (QMS) to ensure that Water Services maintains a reasonable readiness to deal with emergencies. The ability to deal with emergencies is critical in demonstrating that Water Services has taken a diligent approach to operating the Guelph Drinking Water System. Feedback from this testing is incorporated into the Water Services Emergency Plan and /or daily operations.

- On Apr. 12, an Ice Storm event occurred that tested our preparedness for severe weather and power failure.

During the event, immediate actions were taken by staff to contain the situation and prevent any further complications. Following the event, debriefing sessions along with corrective actions (such as increasing system redundancy, improving procedures, training staff, etc.) were suggested to ensure that improvement items are implemented to improve Water Services' overall emergency preparedness.

Follow-up on longer-term corrective and improvement actions is in progress.

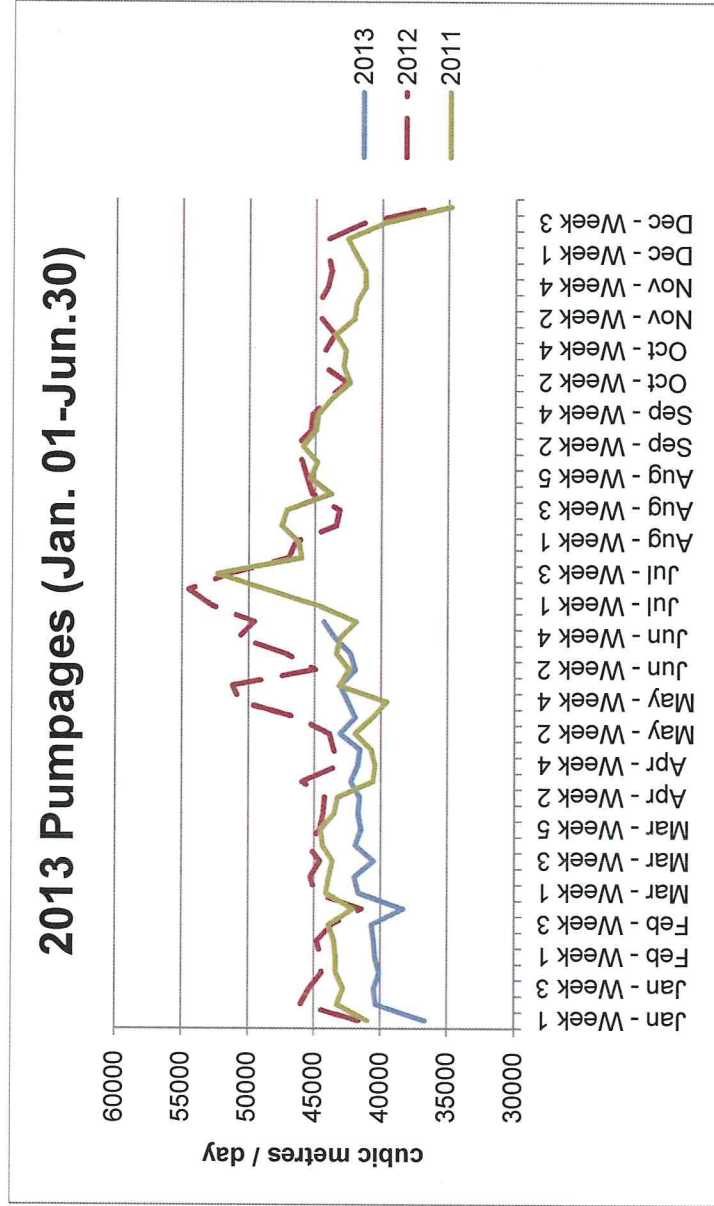
G) OPERATIONAL PERFORMANCE AND STATISTICS

This section describes the various pieces of information that are used to gauge the performance of the Drinking Water System, including reasoning for changes or observations.

Pumpages

Summaries of total water pumped, instantaneous flows and capacity (flows and volumes compared to rated capacities) by the City of Guelph from Jan. 01 to Jun. 30 can be found in the full version of the report available at www.guelph.ca/water.

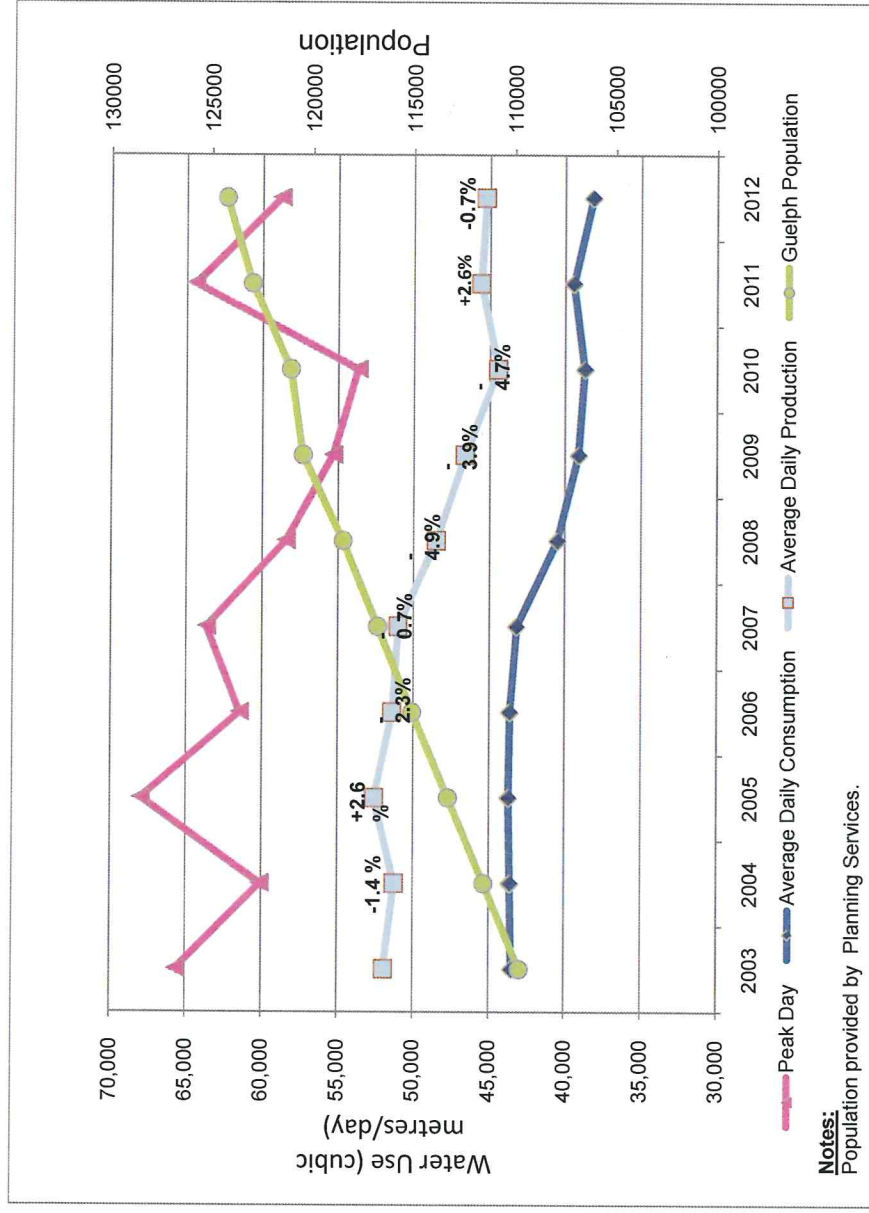
Water Services processed 8,041,953 cubic metres (8.0 billion litres) of water to the distribution system in 2013 (Jan. 01 to Jun. 30). This represents 2.3 per cent less water being supplied to the distribution system in 2013 as compared to the same time period in 2012 and 4.2 per cent more water than in 2011.. The average daily water demand was 44,431 cubic metres (44.4 million litres). The maximum day production of water in 2013 was 52,440 cubic metres (52.4 million litres) and occurred on June 25, 2013. The minimum day production of water in the same time period was 35,284 cubic metres (35.3 million litres) and occurred on Jan. 1, 2013.



Water Production vs. Water Consumption vs. Population

The table below depicts the maximum pumpages (peak water days), average daily water production, and average daily water consumption rates in cubic metres per day (m³/day) as compared against Guelph's population.

Water Production vs. Water Consumption vs. Population



- Water Conservation & Efficiency Program goals include:
- Reduce water use by **8.7 MLD by 2019**
 - **Affordability:** most cost effective source of new water capacity and limit capital and O&M costs
 - **Source Sustainability:** sustainability of water supplies, limit impacts of growth and expand life of public supply infrastructure assets
 - **Source Optimization:** reduce operational and environmental impacts of peak season demands
 - **Compliance:** maintain compliance requirements for PTTWs and Water Opportunities Act.
 - **Community Awareness:** foster community awareness regarding water use and stewardship.
 - **Emergency Preparedness:** short-term management of water demand and public engagement in emergency scenarios
 - **Future Readiness:** best position for City for climate change resiliency

Collector Flows

The Arkell Spring Grounds Collectors ("Collectors"), one Guelph's many water sources, consist of a gravity-fed under-drain system that collects shallow overburden groundwater. This system has been in use since the early 1900's and can represent as much as 40 per cent of the total city-wide daily water production. When the output of this source is reduced, Water Services is required to make up the difference from other water supplies.

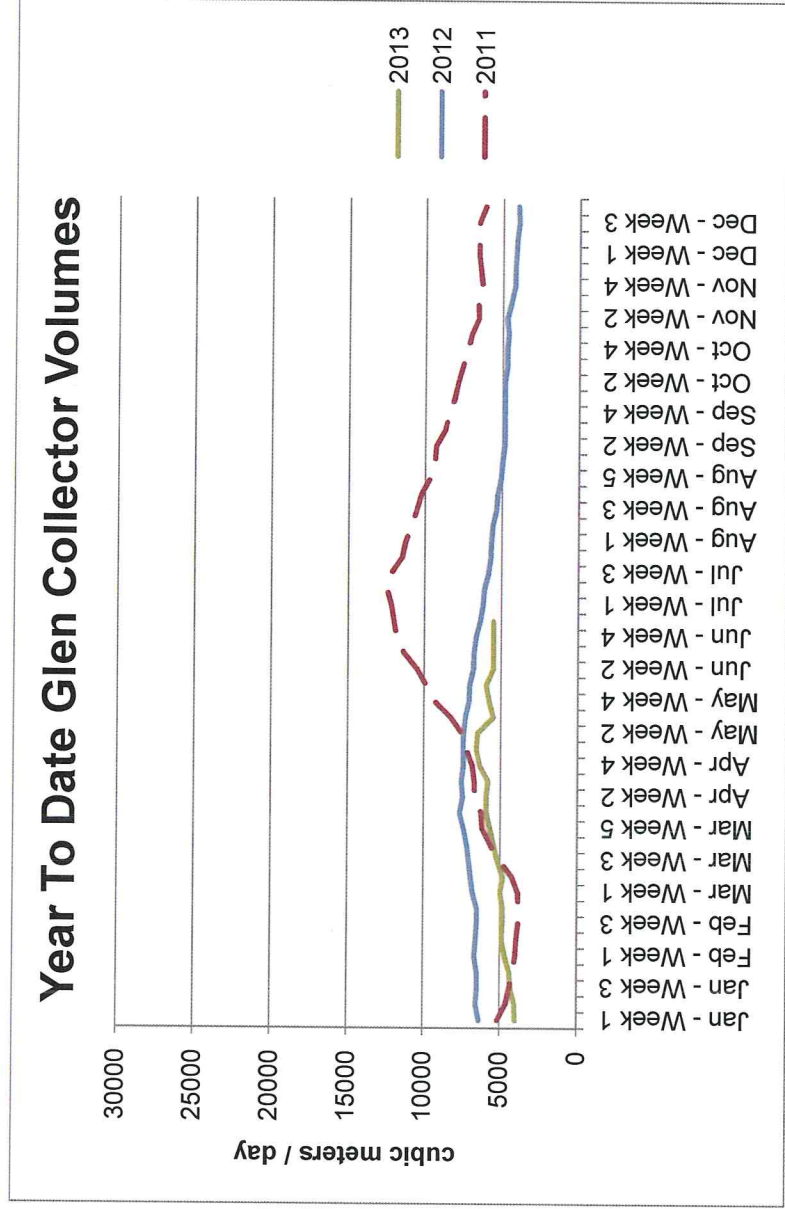
The following "Year To Date Glen Collector Volumes" graph depicts the Glen Collector flow rate in cubic metres per day (m³/day) that is averaged each week (Jan. 01 to Jun. 30).

Throughout the year, the production from this water supply varies from an approximate low of 4,000 cubic metres (4 million litres) up to an approximate high of 20,000 cubic metres (20 million litres) per day.

The volume of water that the Collectors produce is one of the benchmarks used in the decision-making process to determine the appropriate level of outside water use for the City.

The Collectors have produced 963,792 cubic metres (963.8 million litres) of water in 2013 (Jan. 01 to Jun. 30). This represents 55.28 per cent less water as compared to the same time period in 2012 and 65.49 per cent less water than in 2011.

Part of the discrepancy in the totalized volume comparison between 2013 and the two previous years can be attributed to the fact that the Recharge System is not being utilized in order to accommodate the Arkell OTP/AMP (Operational Testing Plan / Adaptive Management Plan) which is a condition of the Arkell Well Field PTTW (Permit to Take Water).



Management of Water Supply includes:

- Water quality monitoring
- Redundant equipment for major processes
- Provincially certified operators
- Additional treatment where necessary
- Supply facilities monitored continuously and checked daily
- Treatment systems facilities fully automated and redundant
- Protection from power failures through uninterruptable power supplies and electrical generators
- SCADA system provides for system security and alarms to oncall operator for after-hours issues

Distribution goals are:

- Effective design and build
 - o Max. daily use for residential & ICI customers
 - o Fire fighting demand
 - o Operational redundancy
- Effective operation
 - o Pressure management
 - o Chlorine residual
 - o Flushing and cleaning
- Effective maintenance
 - o Timely response to breakdowns
 - o Preventive to ensure infrastructure longevity and reliability of service
- Mitigation of distribution system failures
 - o Automated monitoring and alarming
 - o Competent and trained operators
 - o Standard operating procedures
 - o After-hours on-call and response program
 - o Water Services Emergency Response Plan

The following is a summary of Major Water Supply Maintenance carried out in Guelph's Drinking Water System (Jan. 1 to Jun. 30):

SUPPLY MAJOR MAINTENANCE ACTIVITY	Well Site(s)
Backflow Prevention Testing & Repair	Various sites
Booster Pump (#3) Maintenance and Motor Rebuild	F.M. Woods
Dam Rehabilitation	Arkell Spring Grounds
Diesel Generator Rental for Clair Tower	Downey
Elevated Storage Tank Maintenance and Painting	Clair Tower
MCC CB2 Switch Gear	F.M. Woods
Pump #2 Rebuild w/ Mechanical Seals	Robertson
Reliability-Centered Maintenance Program (RCMP)	All sites

The following is a summary of Distribution System Maintenance carried out in Guelph's Drinking Water System (Jan. 1 to Jun. 30):

DISTRIBUTION JOB TYPE	Jan. 1-Jun. 30, 2013
Hydrant Repair	1
Hydrant Repair Hit	1
Main Break	24
Other	5
Service Repair	30
Service Replace Lead	5
Service Replace Non-Lead	13
Valve Repair	1
Valve Replace (WW)	3

H) RAW AND TREATED WATER QUALITY

Under the Safe Drinking Water Act (SDWA), municipalities are required to monitor both the raw and treated quality of the source water supplied. This monitoring is performed for both regulatory compliance and due diligence.

Operational and Microbiological Sampling						
Parameter	Location	# Analyses	Criteria	# Outside Criteria*	Results Range	Regulatory Reference
Free Chlorine Residual	Guelph Zone One	181	0.05-4.0 mg/L	0	0.52-1.00 mg/L	O. Reg. 170/03 Schedule 7-2
Free Chlorine Residual	Guelph Zone Two	181	0.05-4.0 mg/L	0	0.57-1.05 mg/L	O. Reg. 170/03 Schedule 7-2
Raw – E. coli	Raw sources, no disinfection	597	n/a	n/a	0-14 cfu/100 mL	O. Reg. 170/03 Schedule 10-4
Raw – Total Coliform	Raw sources, no disinfection	597	n/a	n/a	0-120 cfu/100 mL	O. Reg. 170/03 Schedule 10-4
Raw – HPC	Raw sources, no disinfection	1	n/a	n/a	n/a	O. Reg. 170/03 Schedule 10-4
Raw – Background	Raw sources, no disinfection	597	n/a	n/a	0-730 cfu/100 mL	O. Reg. 170/03 Schedule 10-4
Raw River – E. coli	Raw sources, no disinfection	0	n/a	n/a	n/a	O. Reg. 170/03 Schedule 10-4
Raw River – Total Coliform	Raw sources, no disinfection	0	n/a	n/a	n/a	O. Reg. 170/03 Schedule 10-4
Raw River – HPC	Raw sources, no disinfection	0	n/a	n/a	n/a	O. Reg. 170/03 Schedule 10-4
Raw River – Background	Raw sources, no disinfection	0	n/a	n/a	n/a	O. Reg. 170/03 Schedule 10-4
POE – E. coli	Disinfected ("treated") water at point of entry (POE)	292	0	0	n/a	O. Reg. 170/03 Schedule 10-3
POE – Total Coliform	Disinfected ("treated") water at point of entry (POE)	292	0	0	n/a	O. Reg. 170/03 Schedule 10-3
POE – HPC	Disinfected ("treated") water at point of entry (POE)	289	n/a	n/a	0-690 cfu/mL	O. Reg. 170/03 Schedule 10-3
POE – Background	Disinfected ("treated") water at point of entry (POE)	292	n/a	n/a	0-4 cfu/100 mL	O. Reg. 170/03 Schedule 10-3
POE – Free Chlorine Residual	Disinfected ("treated") water at point of entry (POE)	333	0.05-4.0 mg/L	0	0.53-1.33 mg/L	O. Reg. 170/03 Schedule 6-3
Dist. – E. coli	Disinfected ("treated") water in Distribution System	826	0	n/a	n/a	O. Reg. 170/03 Schedule 10-2
Dist. – Total Coliform	Disinfected ("treated") water in Distribution System	826	0	3	0-3 cfu/100 mL	O. Reg. 170/03 Schedule 10-2
Dist. – HPC	Disinfected ("treated") water in Distribution System	406	n/a	n/a	0-60 cfu/100 mL	O. Reg. 170/03 Schedule 10-2
Dist. – Background	Disinfected ("treated") water in Distribution System	826	n/a	n/a	0 – 1,000 cfu/100 mL	O. Reg. 170/03 Schedule 10-2
Dist. – Free Chlorine Residual	Disinfected ("treated") water in Distribution System	821	0.05-4.0 mg/L	0	0.27 – 1.15 mg/L	O. Reg. 170/03 Schedule 6-3
Raw Source Turbidity	Raw sources, no disinfection	504	n/a	n/a	0.05-2.00 ntu	O. Reg. 170/03 Schedule 7-3
GUDI-WEF characteristics	Microparticulate & Laser Particle Counting	6	n/a	n/a	Confirmed GUDI-WEF	MOE GUDI Terms of Reference
POE – Free Chlorine Residual	Over 20 monitoring devices – continuous monitoring	1:5mins	0.05 mg/L	0	n/a	O. Reg. 170/03 Schedule 6-5
UV Dose F.M. Woods	Over 1 monitoring device – continuous monitoring	1:5mins	24 mJ/cm ²	0	n/a	MOE UV Treatment Criteria
UV Dose Urban Wells	Over 20 monitoring devices – continuous monitoring	1:5mins	40 mJ/cm ²	0	n/a	MOE UV Treatment Criteria

The table below includes relevant information about chemical, organic and inorganic sampling results due to their presence or significance within the Guelph Drinking Water System. There was no instance of an adverse result in 2013 (Jan. 1 – Jun. 30); and all results were below the ½ MAC (half of MAC, maximum allowable concentration). The full version of the Annual & Summary Report provides results for all chemical sampling results.

Parameter	# Samples	Sampling Frequency	Criteria MAC	Criteria ½ MAC	# Outside Criteria	Results Range		Average	Regulatory Reference
						Min	Max		
						Chemical Sampling (all data reported in mg/L)			
Trihalomethanes – Distribution System Samples	3	1:3 months	0.100 ^A	n/a	0	0.0244	0.0319	0.0282	O. Reg. 170/03 Schedule 13-6
Nitrate + Nitrite (as nitrogen)	25	1:3 months	10	5	0	< 0.10	5.6	1.1588	O. Reg. 170/03 Schedule 13-7
Nitrate + Nitrite (as nitrogen) – Woods' Raw Sources (Operational Sampling)	18	1:3 months	n/a	n/a	n/a	0.31	8.4	3.232	O. Reg. 170/03 Schedule 13-7
Nitrate + Nitrite (as nitrogen) – Paisley Raw Source (Operational Sampling)	2	1:3 months	n/a	n/a	n/a	1.1	1.9	1.500	O. Reg. 170/03 Schedule 13-7
Antimony	1	1:36 months	0.014	0.007	0	0.00081	0.00081	0.00081	O. Reg. 170/03 Schedule 23
Arsenic	1	1:36 months	0.025	0.0125	0	< 0.001	< 0.001	n/a	O. Reg. 170/03 Schedule 23
Barium	1	1:36 months	1.0	0.5	0	0.04	0.04	0.04	O. Reg. 170/03 Schedule 23
Boron	1	1:36 months	5.0	2.5	0	0.016	0.016	0.016	O. Reg. 170/03 Schedule 23
Cadmium	1	1:36 months	0.005	0.0025	0	< 0.00010	< 0.00010	n/a	O. Reg. 170/03 Schedule 23
Chromium	1	1:36 months	0.05	0.025	0	< 0.005	< 0.005	n/a	O. Reg. 170/03 Schedule 23
Mercury	1	1:36 months	0.001	0.0005	0	< 0.0001	< 0.0001	n/a	O. Reg. 170/03 Schedule 23
Selenium	1	1:36 months	0.01	0.005	0	< 0.002	< 0.002	n/a	O. Reg. 170/03 Schedule 23
Uranium	1	1:36 months	0.02	0.01	0	0.00096	0.00096	0.00096	O. Reg. 170/03 Schedule 23
Dichloromethane	24	1:36 months	0.05	0.025	0	< 0.0005	< 0.0005	n/a	O. Reg. 170/03 Schedule 24
Tetrachloroethylene (perchloroethylene)	24	1:36 months	0.03	0.015	0	< 0.0001	< 0.0001	n/a	O. Reg. 170/03 Schedule 24
Trichloroethylene	24	1:36 months	0.005	0.0025	0	< 0.0001	0.00209	0.00127	O. Reg. 170/03 Schedule 24
Trihalomethanes ^B	24	1:36 months	0.100 ^A	n/a	0	< 0.0002	0.0305	0.01072	O. Reg. 170/03 Schedule 24
Sodium	14	1:12 months ^C	20 & 200 ^D	n/a	13	15	130	60.786	O. Reg. 170/03 Schedule 13-8
Fluoride	13	1:60 months	1.5 & 2.4 ^E	0.75	0	<0.1	0.70	0.308	O. Reg. 170/03 Schedule 13-9

A – This standard is expressed as a running annual average

B – This subset of trihalomethane samples represents sampling from treated sources and does not refer to the previous distribution system sampling

C – Sodium is sampled on a more frequent basis due to the fact that for every treated source except F.M. Woods (Currently), sodium levels are above the lower reportable limit of 20 mg/L

D – The aesthetic objective for sodium in drinking water is 200 mg/L. The local Medical Officer of Health should be notified when the sodium concentration exceeds 20 mg/L so that this information may be communicated to local physicians for their use with patients on sodium restricted diets.

E – Where supplies contain naturally occurring fluoride at levels higher than 1.5 mg/L but less than 2.4 mg/L the Ministry of Health and Long Term Care recommends an approach through local boards of health to raise public and professional awareness to control excessive exposure to fluoride from other sources.

I) TREATED WATER QUALITY – GAZER MOONEY SUBDIVISION DISTRIBUTION SYSTEM

Related to Section H) Raw and Treated Water Quality, this section describes the Regulatory water quality monitoring that has been collected in the Gazer Mooney Subdivision Distribution System in 2013 (Jan. 01 to Jun. 30, 2013).

Parameter	Location	Operational and Microbiological Sampling				Regulatory Reference
		# Analyses	Criteria	# Outside Criteria*	Results Range	
Free Chlorine Residual	Gazer Mooney	181	0.05-4.0 mg/L	0	0.60-0.99 mg/L	O. Reg. 170/03 Schedule 7-2
Dist. - E. coli	Disinfected ("treated") water in Distribution System	26	0	0	n/a	O. Reg. 170/03 Schedule 10-2
Dist. - Total Coliform	Disinfected ("treated") water in Distribution System	26	0	0	n/a	O. Reg. 170/03 Schedule 10-2
Dist. - HPC	Disinfected ("treated") water in Distribution System	26	n/a	0	0-1 cfu/mL	O. Reg. 170/03 Schedule 10-2
Dist. - Background	Disinfected ("treated") water in Distribution System	26	n/a	n/a	0-1 cfu/100 mL	O. Reg. 170/03 Schedule 10-2
Dist. - Free Chlorine Residual	Disinfected ("treated") water in Distribution System	27	0.05-4.0 mg/L	0	0.76-0.99 mg/L	O. Reg. 170/03 Schedule 10-2

Parameter	# Samples	Sampling Frequency	Criteria MAC	Criteria 1/2 MAC	# Outside Criteria*	Results Range		Average	Regulatory Reference
						Min	Max		
						Chemical Sampling (all data reported in mg/L)			
Trihalomethanes	2	1:3 months	0.100 ^A	n/a	0	0.0156	0.0163	0.0160	O. Reg. 170/03 Schedule 13-6
Sodium	1	1:12 months	20 & 200 ^B	n/a	1	26	26	26	O. Reg. 170/03 Schedule 13-8

A – This standard is expressed as a running annual average

B – The aesthetic objective for sodium in drinking water is 200 mg/L. The local Medical Officer of Health should be notified when the sodium concentration exceeds 20 mg/L so that this information may be communicated to local physicians for their use with patients on sodium restricted diets.

J) STATUS OF ONGOING AND EMERGING WATER QUALITY / SUPPLY INITIATIVES

Statistics related to Lead Service Line (LSL) replacements are included on page 14 of this report. Sampling statistics related to the Lead Reduction Plan is provided below. Additional information about all programs can be accessed in the full version of this report at www.guelph.ca/water.

Lead Sampling

From Jan. 1 to Jun. 30, 2013, 187 Lead Verification samples were collected before and after a LSL replacement.

- 18.2% were above 5 µg/L indicating presence of a lead service line.
- 12.8% also exceeded the ODWQS of 10 µg/L. Regulatory compliance is expected at individual sites that have undergone a full LSL replacement or where there is no lead remaining in the service line.

K) EXPECTED FUTURE CHANGES THAT COULD AFFECT THE DWS OR THE QMS

Operational Testing Plan and Adaptive Management Plan (OTP / AMP) – The purpose of the OTP / AMP is to carry-out a detailed assessment (over three years) of both the aquifer and pumping conditions related to the aquifer to determine a sustainable capacity with respect to environmental considerations in the area. Monitoring and data collection / assessment is ongoing, and further extensive monitoring is being performed at Arkell Well #15 to confirm its source water characteristic classification as groundwater.

GUDI (Groundwater Under the Direct Influence of surface water) Terms of Reference are under review and may result in classification changes to source waters.

Carter Monitoring Program – The Permit to Take Water for Carter Well requires that the Carter Wells be operated at increased levels in conjunction with monitoring in the Torrence Creek Subwatershed. The purpose of the monitoring is to attempt to quantify impacts within this subwatershed.

Expiring Permits to Take Water (PTTWs) – Five PTTWs are scheduled for review and/or renewal in 2013 or 2014:

1. Admiral PTTW (exp. 2014/01/31)
2. Clythe Well PTTW (exp. 2014/03/31)
3. Queensdale PTTW (exp. 2014/03/31)
4. Sacco PTTW (exp. 2014/10/31)
5. Smallfield PTTW (exp. 2013/12/31)

Mandatory Ontario 1Call participation – Under the "Ontario Underground Infrastructure Notification System Act 2012", all municipal infrastructure owners must register by June 2014.

Legal and Other Requirements Update

Date - 2013	Source of Posting / Reference	Title of Legal & Other Requirement Highlights of posting	Action and Status Update
Jan. 5	<u>Ontario Gazette</u>	Definitions, Ontario Regulation 170/03 Drinking Water Systems ... updated for "delivery agent care facility", "interested authority", "social care facility".	Administrative amendment. No action required.
Jan. 13	<u>Ontario Court Bulletin</u>	<u>Municipality/Operators Fined \$154,500 And Operator Received Jail Sentence for Drinking Water Violations</u>	No action required.
Feb. 13	Ontario MOE E-mail	Issue 4 of the <u>Municipal Drinking Water Licensing Program Bulletin</u> is now available on the <u>Drinking Water Ontario website</u> .	Forwarded the e-mail to staff.
Spring	<u>QWWCO website</u>	The Spring 2013 issue of the <u>Operator Certification Bulletin</u> is available on the <u>QWWCO website</u> .	No action required.

Date - 2013	Source of Posting / Reference	Title of Legal & Other Requirement Highlights of posting	Action and Status Update
Apr. 2	Ontario Court Bulletin	<u>Municipality Fined \$17,000 For Safe Drinking Water Violations</u>	No action required.
May 31	Ontario Court Bulletin	<u>The City of Ottawa and its Contractor Fined \$120,000 for Discharging Sediment to Local Creek</u>	No action required.

Changes Affecting the Quality Management System (QMS)

QMS 05 – Various initiatives related to Document & Records Control are being implemented, including The Ontario Municipal Records Management System (TOMRMS); requirements to ensure compliance with the Municipal Freedom of Information and Protection of Privacy Act; expiry date tracking of essential documents.

QMS 08 – Building Services has developed a new Risk Management Program aimed at preventing backflow events related to water use by Parks activities. It applies to everything in the Park property, including rinks, gardens, splash pads etc.

QMS 09 – Water Services is currently working through an organizational review. Acting Supervisor positions continue temporarily-appointed, as required.

QMS 13 – NSF Certification records related to construction projects are filed with Engineering Project files.

QMS 17-01 – Improved procedure for quarterly verification and annual calibration process for all handheld colorimeters.

QMS 18 – the Water Services Emergency Plan (WEP) will be updated to reflect corporate Emergency Operations Centre guidelines and incident command centre structures. Employee training on the updated WEP will take place in Q4 2013.

L) CONSUMER FEEDBACK

2013 Customer Calls Received

Type	Number of Calls		
	2011	2012	2013
Locate requests	1,550	1,320	3,348
Mainbreak	78	43	45
Hydrant	39	18	15
Water Quality	144	72	82
Service Line Issues	327	189	85
Other	61	61	72
Pressure	65	55	62
Flushing/Swabbing	51	25	19
Well Interference Complaints	3	0	2

M) RESOURCES NEEDED TO MAINTAIN THE QMS

No further resources required. Water Services currently has one full-time Quality Assurance Coordinator, who is also the Quality Management System Representative, and access to three Water Services Technicians, a Compliance Coordinator, and a Customer Service Clerk for reporting and documentation requirements of the QMS.

N) THE RESULTS OF INFRASTRUCTURE REVIEW

On a regular basis (at monthly meetings), Guelph's Engineering and Water Services review the condition of supply and distribution infrastructure and review: inventory, age, CAPS (capital asset prioritization system), criticality, soil type and diameter. From this evaluation, Engineering and Water Services develop a list of priority projects that also considers the priorities of wastewater and road reconstruction projects so that these projects can share the costs of excavation and rehabilitation. The priority list is updated (with considerations included) and presented in Annual Operating Budget and the Tri-Annual Capital Budget processes. New linear infrastructure reviews are primarily driven by Engineering Services.

Annual summaries of road reconstruction, sewer and watermain projects are identified annually on an infrastructure map that is released early spring each year.

An Asset Update Report was prepared to develop a funding strategy and to rate sustainability for various infrastructure programs across the City. Water Services' sustainability rating is A-.

In Nov. 2012, Water Services received consultant proposals for the update of the Water Supply Master Plan. It is anticipated that the Water Supply Master Plan will be updated in 2013/2014. The Master Servicing Study is another infrastructure plan that is updated every five years and is used to identify new and replacement infrastructure priorities to include in the budgeting process. The development of a Facility Master Plan is also in progress, along with new initiatives related to property planning for expansions of facilities or to implement new facilities, as required. The Owner (Council & CAO) is updated regarding any deficiencies or gaps.

Backflow Prevention Program

Preservation of drinking water quality within Guelph's infrastructure is supported by the City of Guelph's *Backflow Prevention Regulations* ("By-law", Number (2008) - 18660). As per the By-law, "Backflow" means the flowing back of or reversal of the normal direction of flow of water. The By-law requires that no connections are made to the City's water supply without the installation of a backflow prevention device to isolate premises, sources, and zones to prevent cross-connections in every building or structure where a City water supply or other potable water supply exists. Related to backflow prevention devices, the By-law requires owners to:

- ensure a qualified person conducts annual testing of backflow prevention devices,
- submit test reports within 14 days of the test being conducted for each backflow prevention device,
- survey and resurvey with respect to buildings' or structures' cross-connections (1:5 years)

2013 Backflow Report - Number of Letters Sent out for Annual Testing and Re-survey

	JAN	FEB	MARCH	APRIL	MAY	JUNE	JULY	AUG	SEP	OCT	NOV	DEC	TOTAL
Annual Testing - 1st Letter	86	108	106	126	215	75							716
Annual Testing - 2nd Letter	42	36	66	61	69	124							398
Annual Testing - 3rd Letter	20	6	11	14	18	26							95
Re-survey & Testing (combined) - 1st Letter	32	30	26	30	20	12							150
Re-survey & Testing (combined) - 2nd Letter	36	26	26	16	28	16							148
Re-survey & Testing (combined) - 3rd Letter	10	14	11	2	3	6							46
Water Service Disconnected	1	0	0	0	0	0							1
Number of permits for new installations	7	14	7	7	14	10							59
Number of new devices installed	20	19	8	8	17	14							86

O) OPERATIONAL PLAN CURRENCY, CONTENT AND UPDATES

See agenda item "k) Expected Future Changes That Could Affect the DWS or the QMS" for Operational Plan updates.

P) STAFF SUGGESTIONS

Staff suggestions are discussed during staff and operational meetings and taken into account during annual budget processes. The table below includes a listing of various improvement items that were implemented by staff and communicated across Water Services. Hyperlinks to the e-mail messages summarizing improvement actions are included below.

Improvement Actions Summary

OFI #	Suggestion Title	Improvement Action Description
13-01	New East Monthly Task	Added the task of pumping out the sump pits at Arkell 14 and 15 to the "East Monthly Compliance Record". This action should prevent high level alarms from occurring in the future.
13-02	New Water on Wheels	Guelph Water now offers a new solution to meet drinking water needs at large community events. Water on Wheels (WOW!) is an accessible water wagon unit which will replace the traditional water tanker at special events. All bookings for WOW! are being arranged through Community and Social Services.
13-03	Turbidimeters scaled to 2.0 ntu	Turbidimeters from Res 1 through to the POE should be scaled to 2.0 n.t.u. to reflect the turbidimeters' scaling at 2.0 n.t.u. upstream and downstream of the device. Additionally, Scout Camp and Woods' UV Inlet should be scaled to 20 n.t.u. as it is important to know as soon as possible the degree of the water quality issue so that appropriate action can take place as soon as possible.
13-04	New Sample Line at the Glen Diversion Chamber	A second sample line was installed upstream of the Diversion Valve in the Diversion Valve Chamber. This new sample line will allow for a constant on-line turbidity value to be collected as well as raw water samples when the Collectors are directed to the Aqueduct or to waste. Therefore, the sample pump is now plugged into a live receptacle that does not require the PLC to shut off power in the event of a diversion as the water supply to the pump will be constant. Currently, the original sample point is valved closed (Downstream Sample Point) and the new sample point (Upstream Sample Point) is the new normal feed. The Downstream Sample Point can be used if necessary (during maintenance on the new sample point) but with its obvious limitations.
13-05	On-line Chlorine Analyzers at Speedvale and Verney Towers	In effort to better understand the chlorine residual trends (daily and seasonally) at Speedvale and Verney On-line Chlorine Analyzers are installed. Trends on SCADA can be viewed. This information will provide the best data to determine if mixing systems are a necessary upgrade when these Towers are scheduled for painting. Initially, the analyzers will be installed as a temporary, operational requirement. If it is decided that it would be beneficial to keep them as a permanent addition, our DWWP will have to be updated to reflect these additions.

OFI #	Suggestion Title	Improvement Action Description
13-06	Sample tap covers	Sample tap covers were installed at sampling stations to prevent possible contamination from bird droppings at sample taps.
13-07	Water Services Supply – Hyperlinked Table of Contents	Key documents are hyperlinked in one table of contents document for Water Supply so that all documents are easily accessed electronically by Supply Operators. Hardcopy binders are available to the On-Call staff (Operator and Supervisor) for times when there is no access to the document management system.
13-08	SOP Annual Review	Annual Review process for SOP's was updated to include a description of whether documents are "new", have "significant update" or "annual review".

WATER SERVICES' KEY CHALLENGES

1. Financial sustainability and rising rates.
2. Water demand reduction, optimization and development of local groundwater supplies to support provincially mandated growth.
3. Source protection to ensure quality and quantity sustainability of existing supplies.
4. Infrastructure sustainability and asset management.
5. Maintaining and growing an effective work force.
6. Existing system optimization, including:
 - Adding redundancy to distribution system
 - Adding treatment for Iron & Manganese removal
 - Potential to add treatment for VOC removal
 - Optimization of chlorination to improve water taste
7. Ensuring a lead free water system.
8. Maintaining and improving customer service.
9. Reduction of non-revenue water through leak reduction and accurate metering.
10. Storm water utility creation.

Ministry of Transportation

Engineering Office
Planning and Design Section
West Region

659 Exeter Road
London, Ontario N6E 1L3
Telephone: (519) 873-4550
Facsimile: (519) 873-4600

Ministère des Transports

Bureau du génie
Section de planification et de conception
Région de l'Ouest

659, chemin Exeter
London (Ontario) N6E 1L3
Téléphone: (519) 873-4550
Télécopieur: (519) 873-4600



December 05, 2013



Director, Information Services and City Clerk
City of Guelph
1 Carden Street
Guelph, ON N1H 3A1

**RE: Notice of Study Commencement
Highway 7 Rehabilitation from Guelph to Rockwood, Guelph-Eramosa Township,
Wellington County
Pavement Rehabilitation and Drainage Improvements
Detailed Design and Class Environmental Assessment Study
G.W.P. 3120-10-00**

To Whom It May Concern,

The Ministry of Transportation (MTO) is undertaking a Detailed Design and Class Environmental Assessment Study for the rehabilitation of Highway 7 from the east limit of Guelph (Skyway Dr.) to the west limit of Rockwood, as shown on the Key Plan below. The study area is within the Township of Guelph-Eramosa, located in Wellington County. The study will be completed in accordance with the *Class Environmental Assessment for Provincial Transportation Facilities (2000)* requirements for a Group "C" project.

Subject to the outcome of the study, the MTO is proposing to undertake the following work:

- Approximately 7 km of pavement rehabilitation;
- Drainage improvements including ditching and culvert replacements; and
- Modification or removal of entrances onto Highway 7 in accordance with MTO best practices.

Construction is currently scheduled to begin in 2014, subject to funding, design, environmental approval, property acquisition and construction requirements. The construction contract will include improvements to the Highway 7 / Wellington Road 44 intersection which received Environmental Clearance, September, 2013 in a separate study. Work is expected to be completed in one construction season. Local and through traffic will be maintained on Highway 7 with single lane closures to accommodate paving operations.

As part of the study and environmental assessment process, the MTO is seeking input on the existing conditions in the study area and any issues or concerns that you may have about the project. Responses are requested by **January 6, 2014**.

If you require further information or have any questions or comments, please contact either of the persons below. Thank you for your assistance with this project.

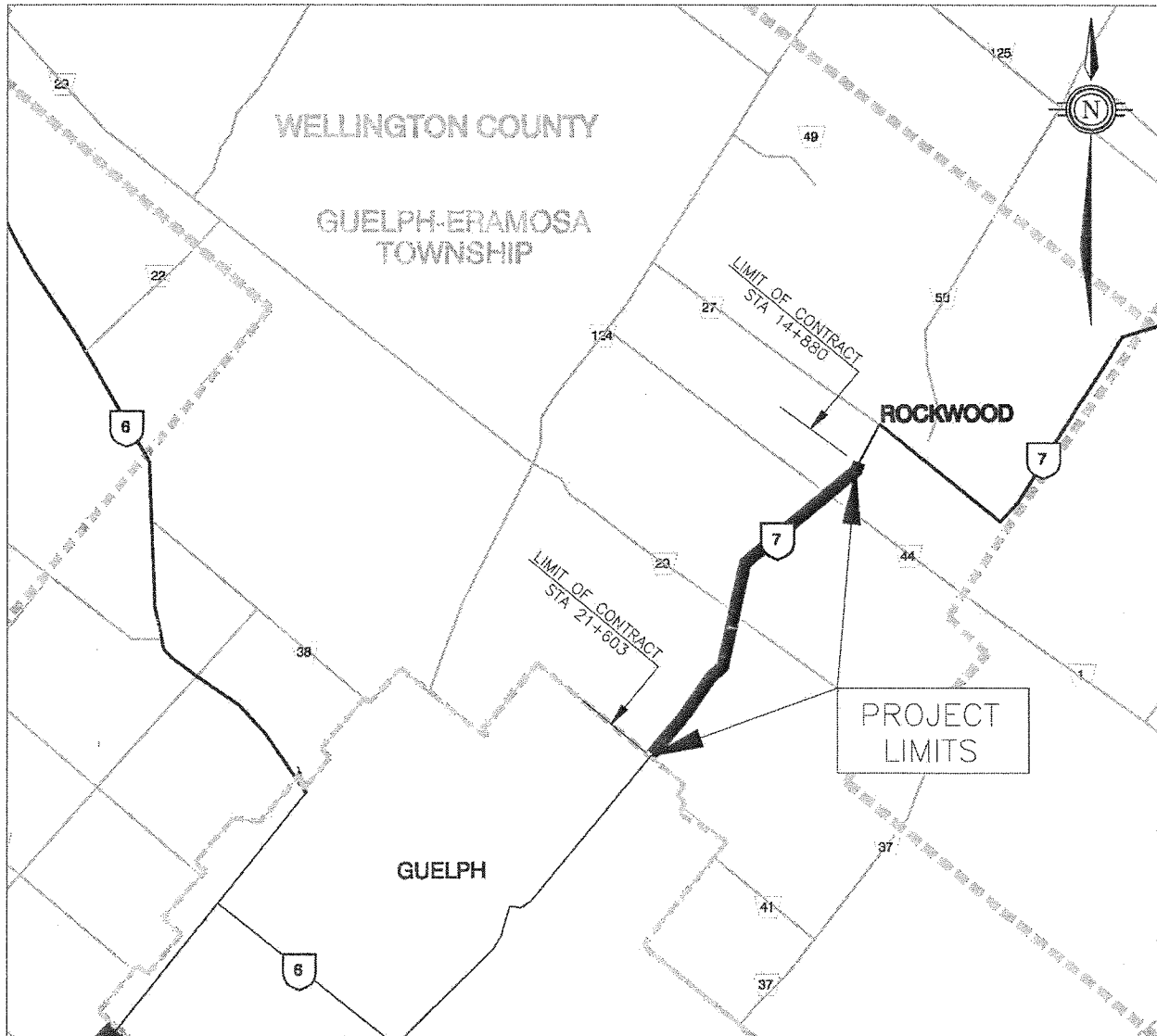
Sincerely,



Ron Meertens,
Project Manager
Ministry of Transportation
659 Exeter Road
London ON N6E 1L3
519 873-4715
Meertens@ontario.ca
1 800 265-6072 ext. 519 873-4715



James Corcoran
Environmental Planner
Ministry of Transportation
659 Exeter Road
London ON N6E 1L3
519 873-4741
James.Corcoran@ontario.ca
1 800 265-6072 ext. 519 873-4741



KEY PLAN



M E M O R I A L P A R K

RECEIVED
NOV 29 2013
GUELPH FIRE DEPT

762 Woolwich Street
Guelph, Ontario Canada N1H 3Z1
519.822.1271 1.888.730.8199
FAX 519.822.4452
www.woodlawnmemorialpark.ca

Operated by The Guelph Cemetery Commission
as a not for profit organization.

November 18, 2013

- Crematorium
-
- Traditional & Cremation Lots
- Cremation Gardens
- Arbour Walk
- Mausoleum
- Family Mausoleums
- Chapel
- Scattering Garden
- Chapel Niches
-
- Granite Monuments
- Bronze Markers
- Inscription Services
- Cremation Urns & Vaults
-
- Public Services & Events
-
- Children's Memorial Garden
- International Garden of Peace & Peace Pole
- Mothers' Grove
- Dodds Reflection Garden
- University of Guelph Commemorative Garden
-
- Member of OACFP
CANA
FSAC

Chief Shawn Armstrong,
Deputy Chief Kim Hodgeson,
Guelph Fire Service
50 Wyndham Street S
Guelph, ON N1H 4E1

Dear Chief,

Again this year our Remembrance Day service was a moving event. Poor weather did not deter the more than 200 people who attended. Our success was in no small part due to the participation and support of the members of the Guelph Fire Service. Thank you for authorizing your team's participation.

Every year, people tell us how they appreciate the participation of the Fire Services, Honor Guard and how moved they are at the site of the men and women in uniform parading into the Veterans area. They, like all of us are honored to be part of this important occasion. I feel sure that this time of remembrance and reflection has touched so many people who attended the Remembrance Day service at Woodlawn Memorial Park.

On behalf of the members of the Guelph Cemetery Commission, my staff and I, thank you all for taking part.

Sincerely,

Paul Taylor
General Manager
Woodlawn Memorial Park

L'Original, December 10, 2013

The Honorable David Oraziatti
Minister of Natural Resources
Suite 6630, 6th Floor, Whitney Block
99 Wellesley Street West
Toronto, Ontario M7A 1W3

Re: Amendment to the Aggregate Resources Act for peat moss extraction

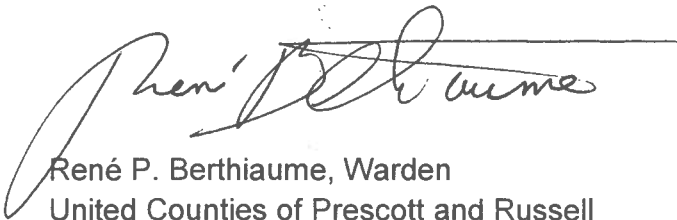
Dear Minister,

The Council of the United Counties of Prescott and Russell, at its meeting of November 27, 2013, discussed a proposal from one of its local municipalities regarding an amendment to the Aggregate Resources Act for the extraction of peat moss – a resource that is significant and abundant in our region, but of which its extractors are not subject to annual fees.

Given that heavy trucks carrying this peat moss contribute to the deterioration of our roads and infrastructures, and that the Act provides that every licensee or holder of an aggregate permit shall pay an annual fee to municipalities – which in turn must ensure the protection of the road network – our Council subsequently adopted a resolution requesting the Ministry of Natural Resources to amend the Aggregate Resources Act to ensure that peat-moss extractors are subject to the same criteria as other aggregate extractors.

I am pleased to enclose a certified true copy of our Resolution 2013/208 for your consideration, in hoping the Ministry of Natural Resources may be of further assistance in this file and consider this amendment to the Aggregate Resources Act. Your opinion on the matter would also be greatly appreciated, as our Council believes this to be an issue facing many municipalities across the province.

Please accept, Minister, my sincere regards,



René P. Berthiaume, Warden
United Counties of Prescott and Russell



Proposé / Moved By : François St-Amour

Date: 27 novembre / November 27, 2013

Appuyé / Seconded by : Marcel Guibord

Numéro / Number 2013/208

RE: Modification de la législation portant sur l'extraction de la tourbe
Amendment to the legislation regarding peat-moss extraction

ATTENDU que la Loi sur les ressources en agrégats surveille et réglemente l'exploitation des agrégats sur les terres de la Couronne et les terrains privés;

WHEREAS the Aggregate Resources Act controls and regulates aggregate operations on Crown and private lands;

ET ATTENDU que la loi exige que les titulaires de permis ou de licence d'extraction en agrégats versent des droits annuels aux municipalités locales;

AND WHEREAS the Act provides that every licensee or holder of an aggregate permit shall pay an annual fee to local municipalities;

ET ATTENDU que les extracteurs de tourbe ne sont pas assujettis à des droits annuels;

AND WHEREAS peat-moss extractors are not subjected to annual fees;

ET ATTENDU que dans la loi, la définition du mot «terre» exclut le sol arable et la tourbe;

AND WHEREAS in the Act, the word "earth" does not include topsoil and peat moss;

ET ATTENDU que les municipalités doivent assurer la protection du réseau routier mais la circulation des camions lourds transportant de la tourbe contribue à la dégradation des routes;

AND WHEREAS municipalities must ensure the protection of the road network as heavy trucks carrying peat moss contribute to the deterioration of roads and infrastructures;

QU'IL SOIT RÉSOLU que le Conseil pétitionne le ministère des Richesses naturelles de modifier la Loi sur les ressources en agrégats pour assurer que les opérateurs d'extraction de la tourbe soient assujettis aux mêmes exigences que les exploitants d'agrégats.

BE IT RESOLVED that Council petition the Ministry of Natural Resources to amend the Aggregate Resources Act to ensure that peat-moss extractors are subject to the same criteria as other aggregate extractors.

Adoptée

Carried

COPIE CERTIFIÉE CONFORME/ CERTIFIED TRUE COPY

Je, Andrée Latreille, greffière adjointe de la Corporation des Comtés unis de Prescott et Russell, atteste que la présente est une copie certifiée de la résolution adoptée par le Conseil le 27^e jour du mois de novembre 2013. / I, Andrée Latreille, Deputy Clerk of the United Counties of Prescott and Russell hereby certify that the foregoing is a true copy of a Resolution adopted by County Council on the 27th day of November, 2013.

A handwritten signature in blue ink, appearing to read "A. Latreille", is written above a horizontal line.

Andrée Latreille, Greffière adjointe

GRCA General Membership

Chair	Jane Mitchell
1st Vice-Chair	Vic Prendergast
2nd Vice-Chair	Jan d'Ailly
Townships of Amaranth, East Garafraxa, Melancthon and Southgate and Town of Grand Valley	Tom Nevills
Townships of Mapleton and Wellington North	Pat Salter
Township of Centre Wellington	Joanne Ross-Zuj
Town of Erin, Townships of Guelph/Eramosa and Puslinch	John Brennan
City of Guelph	Bob Bell, Maggie Laidlaw
Region of Waterloo	Les Armstrong, Todd Cowan, Jan d'Ailly, Rob Deutschmann, Jean Haalboom, Ross Kelterborn, Geoff Lorentz, Claudette Miller, Jane Mitchell, Warren Stauch
Municipality of North Perth and Township of Perth East	George Wicke
Halton Region	J. Barry Lee
City of Hamilton	Jeanette Jamieson
Oxford County	Bruce Banbury
County of Brant	Brian Coleman, Steve Schmitt
City of Brantford	Robert Hillier, Vic Prendergast
Haldimand and Norfolk Counties	Lorne Boyko, Fred Morison

Aggregate extraction north of Everton

The GRCA is considering a proposal by Cox Construction to extract aggregate from a part of a GRCA property in the Town of Erin.

Cox operates a gravel pit and wants to expand their pit onto adjacent GRCA land north of Everton.

GRCA staff have told Cox that there needs to be a net environmental gain in the long term if this project is to be completed. A rehabilitation plan would be approved by the GRCA and negotiations for compensation may consider royalty payments and potential future land exchanges.

Staff will return to the GRCA board with a recommendation regarding the proposal once Cox Construction has provided details and the implications for GRCA.

\$80,000 in Upper Grand Restoration Fund

About \$80,000 is in the GRCA fund for water quality projects on private land in the Upper Grand.

Since 2002 the Rural Water Quality Program has provided a total of \$315,000 to landowners in the Upper Grand for 135 projects. The funds for these projects come from a variety of sources such as Trees Ontario and the Ontario Drinking Water Stewardship Fund. In 2007, the GRCA set up the Upper Grand Restoration Fund to make sure consistent funding is available. The fund provides up to \$50,000 annually for projects.

Through this program, 66 tree planting projects have been undertaken with 132,000 trees planted on 78 hectares (194 acres). In addition, 14 kilometres of windbreaks have been planted and one kilometre of living snow fence. Six kilometres along rivers have been fenced to keep 800 livestock out of the waterways.

The Rural Water Quality Program provides funding to landowners to share the cost of projects that improve water quality. Many watershed

municipalities provide annual funding for the RWQP. In the Upper Grand Dufferin County provided \$50,000 in 2012, and is being asked to provide money each year.

Dam and dyke maintenance update

Several large capital projects are being completed this year and many more are included in the five year forecast.

The Luther Dam embankment repair is now nearing completion, while the elevator at the Guelph Dam will be finished by the end of this year. Reconstruction of the Drimmie Dam in Elora should be finished early in 2014. The total cost of these projects in the 2013 budget is around \$2.7 million.

The five year dam and dyke maintenance forecast shows that the GRCA expects to spend \$1.5 million per year between 2014 and 2018.

The GRCA owns 29 dams, including seven that manage river flows and 22 smaller, run-of-the-river dams or earthen embankment dams. These dams are regulated by the province, which released new Technical Guidelines for approved projects that could have a significant impact on the biggest future project for the GRCA, which is a proposed emergency spillway at the Conestogo Dam.

New Feb. 28 deadline for conservation grants

The community conservation grant application deadline in 2014 is Feb. 28.

The GRCF is awarding grants of up to \$1,000 to qualified community groups and up to \$750 to elementary schools. The grants are for tangible conservation projects in communities throughout the Grand River watershed. Eligible projects will be available for the use or benefit of the entire community to receive grants.

The Grand River Conservation Foundation wants to let people know about the earlier cut off



for applications. The change allows schools and organizations to receive the funds earlier, as most projects take place in the spring.

School grants are for trees and other greenery that is part of school yard greening projects.

Grant recipients will be notified in the spring. A final report may be requested of grant recipients within one year, or upon the successful completion of the project.

Applications can be downloaded from the Foundation section of the GRCA website at www.grcf.ca, or by contacting the Grand River Conservation Foundation in Cambridge at 1-866-900-4722 or 519-621-2763 ext. 2372 or email foundation@grandriver.ca.

Watershed full of water

November started out wet, with the highest single-day rainfall (20 to 35mm) for the month recorded on Nov. 1, when a watershed conditions statement for high flows was in effect.

The Conestogo Reservoir climate station recorded the wettest conditions during the month with 152 per cent of normal precipitation, while the Shade's Mill climate station recorded the least with only 78 per cent of the long-term average to date.

Although the temperature was 0.8 C above the long term average at the Shand Dam, there was still a mix of rain, sleet, freezing rain and snow. Daytime temperatures ranged from the mid-teens to below freezing, while overnight the thermometer dropped to -14 C on one occasion.

Reservoir levels have been high throughout the fall due to precipitation and construction in the river which required low flows. By the end of the month, all reservoirs except Conestogo were at, or close to, their normal operating range.

Stream flows throughout the watershed have been high and the ground was saturated, resulting in a lot of runoff.

Trail access for hunters

Tony Jackson of the Ontario Federation of Anglers and Hunters made a presentation to the GRCA board about access to the rail-trail north of Paris for hunters.

In 2012 signs were installed along the GRCA-owned rail-trail that say, "Possession



Merry Christmas from the GRCA to you! This deer lives at Pinehurst Lake Conservation Area.

and carrying firearms on trail prohibited." Jackson asked that the wording be changed to "All firearms must be unloaded and encased while using this trail".

Hunters use the trail near Blue Lake Road and East River Road to get to an island in the middle of the Grand River that is used during duck hunting season, September until December.

The board asked staff to look into the matter and report back in December.

Send your children on a Winter Adventure

Winter Adventure Days are taking place at Apps Mill (near Brantford), Laurel Creek (Waterloo) and Guelph Lake nature centres on Jan. 2 and 3.

Kids can come for one or both days. Register online at www.grandriver.eventbrite.ca.

Winter Adventure day camps are fun and educational. Children 6 to 12 will have hands-on, environmental programs that feature activities such as snow shoeing, tobogganing, snow sculpture building and animal tracking (depending on weather conditions). The adventure days are a great opportunity to get the kids away from their holiday electronics and outside for some winter fun.

The cost is \$37.50 per day, with the possibility of extending the program to 8 a.m. to 5 p.m.

This issue of GRCA Current was published in December 2013.

It is a summary of the November business conducted by the Grand River Conservation Authority board and committees as well as other noteworthy happenings and topics of interest.

The Grand River Conservation Authority welcomes the photocopying, forwarding and distribution of GRCA Current.

Next board meeting: Friday, Jan. 24 at 9:30 a.m., GRCA Administration Centre.

Reports mentioned in GRCA Current: www.grandriver.ca/MeetingReports.

For coming events, please see www.grandriver.ca/Calendar.

The November-December issue of Grand Actions newsletter available at: www.grandriver.ca/GrandActions