

Healthy Landscapes – Plant List

Native and Drought-Tolerant Plants



healthy
landscapes

Non-invasive Ontario native plant species and drought tolerant plants thrive in local conditions; this means less water, easier care, fewer pests, and less reliance on pesticides. They require minimal watering **once established** and very little maintenance. Native plants will grow best in your yard if planted in the same conditions that they thrive in nature.

General Characteristics of Plant Species in this list:

1. All species are fully hardy in Guelph's climate
2. There is an emphasis on Ontario native species
3. The non-native species included in this list are not locally invasive

Native Plants

Plants are considered native, indigenous, or endemic to a region if they originated and are naturally occurring in that region. Many "wild" plants that we think of as native species were actually introduced during European settlement to North America. Plants that are native to Southern Ontario evolved here and have adapted to the regional climate, soils and wildlife.

Plants native to Southern Ontario have vast differences of planting requirements. Therefore if possible buy plants from local nurseries who sell plants with seeds collected from this area. This will ensure that the plants you are using will be best adapted to local environmental conditions.

Using local genetic stock is particularly important if your property is close to a park or natural area. This is because there will be exchanges of genetic material from your yard into these natural areas. By using native species from local stock you will ensure that Guelph's native plants will remain genetically adapted to local conditions.

In addition to the benefits of lower cost and maintenance, using native plants can help sustain local ecosystems. Ecosystems are communities of plants and animals including the physical environments they inhabit. Creating healthy, sustainable ecosystems will promote the health of them for years to come.

There are many native plants that have ornamental qualities equal to non-native species. Native plants provide food and shelter for native wildlife. The fruit of most shrubs and vines including dogwoods, viburnums, elderberry, sumac, serviceberry, chokecherry and raspberries attract a wide range of birds and small mammals. Tree species such as eastern white pine, hemlock and hawthorns provide cover for many bird species. Herbaceous plants provide nectar for butterflies and bees. Other species are fast growing or have deep root systems that help stabilize bare sites. You will find many native plants to suit your particular needs.

Note: This is just a partial list of native and drought tolerant plants in this area. Talk to you local nursery, visit the Guelph Arboretum or research native plant web sites to learn more about native and drought tolerant plants that will thrive in your garden.



Native Plants



healthy
landscapes

Perennials

Anaphalis margaritacea
Asclepias tuberosa
Aster ericoides
Aster novae-angliae
Campanula rotundifolia
Chamerion angustifolium
Coreopsis lanceoleolata
Desmodium canadense
Echinacea pallida
Euphorbia corollata
Fragaria virginiana
Geum triflorum
Liatris aspera
Lupinus perennis
Monarda punctata
Oenothera biennis
Opuntia humifusa
Penstemon hirsutus
Pycnanthemum tenuifolium
Ratibida pinnata
Silphium laciniatum
Siphium terribinthinaceum
Solidago rigida
Solidago speciosa
Verbena stricta

Pearly Everlasting
 Butterflyweed
 Heath Aster
 New England Aster
 Bluebells/Harebells
 Fireweed
 Lance-leaf Coreopsis
 Showy Tick Trefoil
 Pale Purple Coneflower
 Flowering Spurge
 Wild Strawberry
 Prairie Smoke
 Rough Blazing-star
 Wild Lupine
 Horse Mint
 Evening Primrose
 Eastern Prickly-pear
Hairy Beardtongue
 Hairy Mountain-mint
 Yellow Coneflower
 Compass-plant
 Prairie Dock
 Stiff Goldenrod
 Showy Goldenrod
 Hoary Vervain

Grasses

Andropogon gerardii
Bouteloua curtipendula
Elymus canadensis
Panicum virgatum
Schizachyrium scoparium
Sorghastrum nutans

Big Bluestem
 Sideoats Grama
 Canada Wild Rye
 Switch Grass
 Little Bluestem
 Indian Grass

Shrubs

Amelanchier alnifolia
Ceanothus americanus
Juniperus communis
Prunus pumila
Rosa carolina
Shepherdia canadensis

Saskatoon Berry
 New Jersey Tea
 Common Juniper
 Sand Cherry
 Carolina Rose
 Buffaloberry

Trees

Acer rubrum
Gleditsia triacanthos
Gymnocladus dioica
Juglans nigra
Juniperus virginiana
Picea glauca
Pinus resinosa
Pinus strobus
Platanus occidentalis
Prunus nigra
Prunus pensylvanica
Quercus alba
Quercus macrocarpa

Red Maple
 Honey-locust
 Kentucky Coffee-tree
 Black Walnut
 Eastern Red-cedar
 White Spruce
 Red Pine
 White Pine
 American Sycamore
 Canada Plum
 Pin Cherry
 White Oak
 Burr Oak

Vines

Celastrus scandens
Parthenocissus quinquefolia

American Bittersweet
 Virginia Creeper

★ = Very invasive in natural areas. Not recommended, especially on properties adjacent to natural areas/ravines/woodlands



Native Plants



healthy
landscapes

Perennials

<i>Allium cernuum</i>	Nodding Wild Onion
<i>Aster laevis</i>	Smooth Blue Aster
<i>Aster oolentangiensis</i>	Sky Blue Aster
<i>Campanula americana</i>	Tall Bellflower
<i>Coreopsis tripteris</i>	Tall Coreopsis
<i>Desmodium canadense</i>	Showy Ticktrefoil
<i>Heliopsis helianthoides</i>	False Sunflower
<i>Maianthemum stellatum</i>	Starry False Solomon's Seal
<i>Monarda fistulosa</i>	Wild Bergamot
<i>Penstemon digitalis</i>	Foxglove Beardtongue
<i>Rudbeckia hirta</i>	Black-eyed Susan
<i>Tradescantia ohioensis</i>	Ohio Spiderwort
<i>Vernonia missurica</i>	Ironweed

Ferns

<i>Pteridium aquilinum</i>	Western Brackenfern
----------------------------	---------------------

Shrubs

<i>Cornus racemosa</i>	Grey Dogwood
<i>Cornus stolonifera</i>	Red-Osier Dogwood
<i>Corylus americana</i>	American Hazel
<i>Juniperus horizontalis</i>	Creeping Juniper
<i>Physocarpus opulifolius</i>	Ninebark
<i>Potentilla fruticosa</i>	Shrubby Cinquefoil
<i>Prunus americana</i>	Wild Plum
<i>Prunus virginiana</i>	Choke Cherry
<i>Rhus aromatica</i>	Fragrant Sumac
<i>Rosa blanda</i>	Smooth Rose
<i>Rosa setigera</i>	Climbing Prairie Rose
<i>Taxus Canadensis</i>	Canadian Yew
<i>Viburnum dentatum</i>	Arrowwood

Trees

<i>Acer saccharum var. nigrum</i>	Black Maple
<i>Amelanchier arborea</i>	Smooth Serviceberry
<i>Amelanchier laevis</i>	Downy Serviceberry
<i>Carya cordiformis</i>	Bitternut Hickory
<i>Carya ovata</i>	Shagbark Hickory
<i>Celtis occidentalis</i>	Hackberry
<i>Cercis canadensis</i>	Eastern Redbud
<i>Crataegus crusgalli</i>	Cockspur Hawthorn
<i>Fraxinus americana</i>	White Ash
<i>Fraxinus pennsylvanicum</i>	Green Ash
<i>Liriodendron tulipifera</i>	Tulip Tree
<i>Malus coronaria</i>	Wild Crabapple
<i>Ostrya virginiana</i>	Ironwood
<i>Prunus serotina</i>	Black Cherry
<i>Ptelia trifoliata</i>	Hoptree
<i>Quercus rubra</i>	Red Oak
<i>Thuja occidentalis</i>	Eastern White Cedar

Vines

<i>Campsis radicans</i>	Trumpetvine
<i>Parthenocissus quinquefolia</i>	Virginia Creeper
<i>Vitis riparia</i>	Riverbank Grape

★ = Very invasive in natural areas. Not recommended, especially on properties adjacent to natural areas/ravines/woodlands



Native Plants



healthy
landscapes

Perennials

<i>Actaea rubra</i>	Red Baneberry
<i>Anemone Canadensis</i>	Canada Anemone
<i>Asarum canadense</i>	Wild Ginger
<i>Aster macrophyllus</i>	Large-leaf Aster
<i>Aquilegia canadensis</i>	Canadian Columbine
<i>Fragaria virginiana</i>	Wild Strawberry
<i>Geranium maculatum</i>	Wild Geranium
<i>Helianthus divaricatus</i>	Woodland Sunflower
<i>Maianthemum racemosum</i>	False Solomon's-seal
<i>Podophyllum peltatum</i>	Mayapple
<i>Polygonatum biflorum</i>	Soloman's Seal
<i>Phlox divaricata</i>	Wild Blue Phlox
<i>Solidago flexicaulis</i>	Zig Zag Goldenrod
<i>Virgin's Bower</i>	Clematis virginiana

Bulbs

<i>Claytonia virginica</i>	Spring Beauty
<i>Erythronium americanum</i>	Trout Lily

Ferns

<i>Adiantum pedatum</i>	Northern Maidenhair
<i>Polystichum acrostichoides</i>	Christmas Fern

Grasses

<i>Elymus hystrix</i>	Bottlebrush Grass
-----------------------	-------------------

Shrubs

<i>Cornus alternifolia</i>	Alternative Dogwood
<i>Cornus rugosa</i>	Round-leafed Dogwood
<i>Hamemalis virginiana</i>	Witch-hazel
<i>Prunus virginiana</i>	Choke Cherry
<i>Ribes americanum</i>	Black Currant
<i>Rubus odoratus</i>	Flowering Raspberry
<i>Sambucus canadensis</i>	American Elder
<i>Viburnum acerifolium</i>	Mapleleaf Viburnum

Vines

<i>Parthenocissus quinquefolia</i>	Virginia Creeper
------------------------------------	------------------

Trees

<i>Acer saccharum</i>	Sugar Maple
<i>Carpinus caroliniana</i>	Blue Beech
<i>Cercis canadensis</i>	Eastern Redbud
<i>Cornus alternifolia</i>	Pagoda Dogwood
<i>Tsuga canadensis</i>	Hemlock

★ = Very invasive in natural areas. Not recommended, especially on properties adjacent to natural areas/ravines/woodlands



Non-Native/Drought Tolerant Plants



healthy
landscapes

Perennials

<i>Armeria maritima</i>	Sea Thrift
<i>Allium tuberosum</i>	Garlic Chives
<i>Amsonia tabernaemontana</i>	Eastern Bluestar
<i>Dianthus alpinus</i>	Alpine Pink
<i>Eryngium yuccifolium</i>	Rattlesnake Master
<i>Sempervivum tectorum</i>	Hens and Chicks
<i>Lavandula angustifolia</i>	Lavender
<i>Oenothera macrocarpa</i>	Missouri Primrose
<i>Papaver alpinum</i>	Alpine Poppy
<i>Linium perenne</i>	Wild Blue Flax
<i>Perovskia atriplicifolia</i>	Russian Sage
<i>Pulsatilla patens</i>	Pasque flower
<i>Rudbeckia spp.</i>	Coneflower
<i>Salvia officinalis</i>	Sage
<i>Sedum spp.</i>	Sedum
<i>Sedum 'Autumn Joy'</i>	Autumn Joy Sedum
<i>Sedum reflexum</i>	Blue Spruce Stonecrop
<i>Silene coronaria</i>	Rose Campion

Bulbs

<i>Crocus sp.</i>	Crocus
-------------------	--------

Grasses

<i>Bouteloua gracilis</i>	Blue Grama
<i>Festuca glauca</i>	Blue Fescue
<i>Sporobolus heterolepis</i>	Prairie Dropseed

Shrubs

<i>Caryopteris X clandonensis</i>	Blue mist
<i>Cotoneaster spp.</i>	Cotoneaster
<i>Kolkwitzia amabilis</i>	Beautybush

Trees

<i>Gingko biloba</i>	Maidenhair Tree
<i>Picea pungens</i>	Colorado Spruce

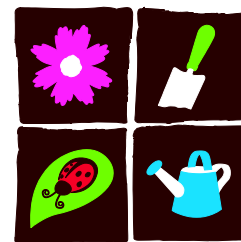
Vines

<i>Hydrangea anomala</i> <i>subs. petiolaris</i>	Grape Hyacinth
<i>Polygonum aubertii</i>	Silver Lace vine

★ = Very invasive in natural areas. Not recommended, especially on properties adjacent to natural areas/ravines/woodlands



Non-Native/Drought Tolerant Plants



healthy
landscapes

Perennials

<i>Allium schoenoprasum</i>	Common Chives
<i>Dodecatheon meadia</i>	Shooting-star
<i>Echinacea purpurea</i>	Purple Cornflower
<i>Hemerocallis sp.</i>	Day Lily★
<i>Iris pumila</i>	Dwarf Iris
<i>Phlox pilosa</i>	Prairie Phlox
<i>Phlox subulata</i>	Creeping Phlox
<i>Sedum spurium</i>	Chinese Stonecrop
<i>Stachys byzantina</i>	Lamb's-ear

Bulbs

<i>Galanthus nivalis</i>	Snowdrops
<i>Muscari armeniacum</i>	Grape Hyacinth
<i>Narcissus sp.</i>	Daffodil
<i>Scilla siberica</i>	Siberian Squill
<i>Tulipa sp.</i>	Tulip

Grasses

<i>Carex spp.</i>	Sedge
<i>Chasmanthium latifolium</i>	Northern sea oats
<i>Festuca cinerea spp.</i>	Fescue

Shrubs

<i>Buddleia davidi</i>	Butterflybush
<i>Berberis thunbergii</i>	Japanese Barberry
<i>Deutzia spp.</i>	Deutzia
<i>Euonymus spp.</i>	Euonymus
<i>Potentilla fruticosa</i>	Shrubby potentilla
<i>Spiraea spp.</i>	Spiraea
<i>Taxus chinensis</i>	Chinese yew

Trees

<i>Aesculus glabra</i>	Ohio Buckeye
<i>Aesculus parviflora</i>	Bottlebrush Buckeye
<i>Catalpa speciosa</i>	Northern Catalpa

Vines

<i>Aristolochia durior</i>	Dutchman's Pipe
<i>Hydrangea anomala subs. petiolaris</i>	Climbing Hydrangea

★ = Very invasive in natural areas. Not recommended, especially on properties adjacent to natural areas/ravines/woodlands



Non-Native/Drought Tolerant Plants



healthy
landscapes

Perennials

Aconitum sp.
Alchemilla mollis
Aruncus diocius
Chelone oblique
Cimicifuga racemosa
Epimedium
Heuchera sp.
Hosta spp.
Vinca minor
Pulmonaria officinalis

Monkshood
Lady's Mantle
Goatsbeard
Turtlehead
Bugbane
Barrenwort
Heuchera
Plantain Lily
Periwinkle ★
Lungwort

Bulbs

Scilla siberica

Siberian Squill★

Grasses

Carex sp.
Chasmanthium latifolium
Panicum sp.

Sedge grass
Northern Sea Oats
Switch grass

Shrubs

Buxus hybrids
Fothergilla major
Hydrangea sp.
Kerria japonica
Hammamelis mollis
Mahonia aquifolium

Green Mountain Boxwood
Large Fothergilla
Hydrangea
Kerry Bush
Chinese Witchhazel
Oregon Grape Holly

Trees

Taxus sp.
Tsuga sp.

Yew
Hemlock

Vines

Akebia quinata
Hydrangea anomala subs.
petiolaris

Five-leaved Akebia
Climbing Hydrangea

★ = Very invasive in natural areas. Not recommended, especially on properties adjacent to natural areas/ravines/woodlands