

# Shade – boulevard garden



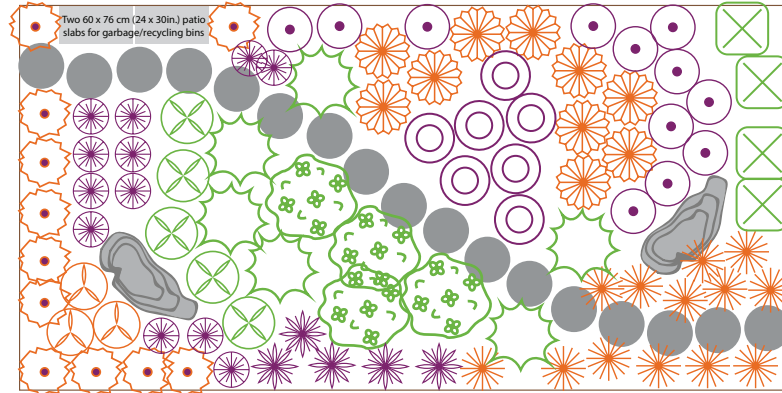
## SUN

Receives less than three hours of direct sunlight each day, with filtered sunlight during the rest of the day.



## SOIL

Rich, well-drained, soil is ideal for this type of garden. The addition of 5 cm (2 in) of organic material (e.g. manure, compost, leaf mold) every couple of years will help to maintain these conditions. Soil erosion caused by mounded boulevard gardens can be a problem. Keep the final mulched surface 3.5 cm (1 in) below the curb or sidewalk. This will prevent water and soil intended for your garden from escaping onto surrounding hard surfaces. Create a shallow depression in the centre of the garden to help catch rainwater and prevent soil and mulch erosion.



## WATER

New plants may need extra watering until the roots are well established (one to two seasons). Otherwise, these plants should thrive with average rainfall.



## GENERAL

Avoid expensive, elaborate plantings as they may be easily damaged. The City of Guelph's Encroachment By-law specifies that boulevard plants cannot be higher than 0.8 m (2.5 ft). This ensures visibility for pedestrians, cyclists and motorists. Rocks and paving stones must be laid below the grade of the sidewalk and curb so as not to interfere with road or sidewalk maintenance. Consider using salt-tolerant plants on boulevards which may be exposed to winter road treatments.

- Spring interest
- Summer interest
- Fall interest

- Stepping stones
- Ornamental rock
- Salt tolerant species



## Please Note:

Boulevard sizes in Guelph vary. Before purchasing plants you should evaluate the space you have and plan accordingly. Remember to leave room for your garbage bins. Two 60 x 76 cm patio slabs work well.