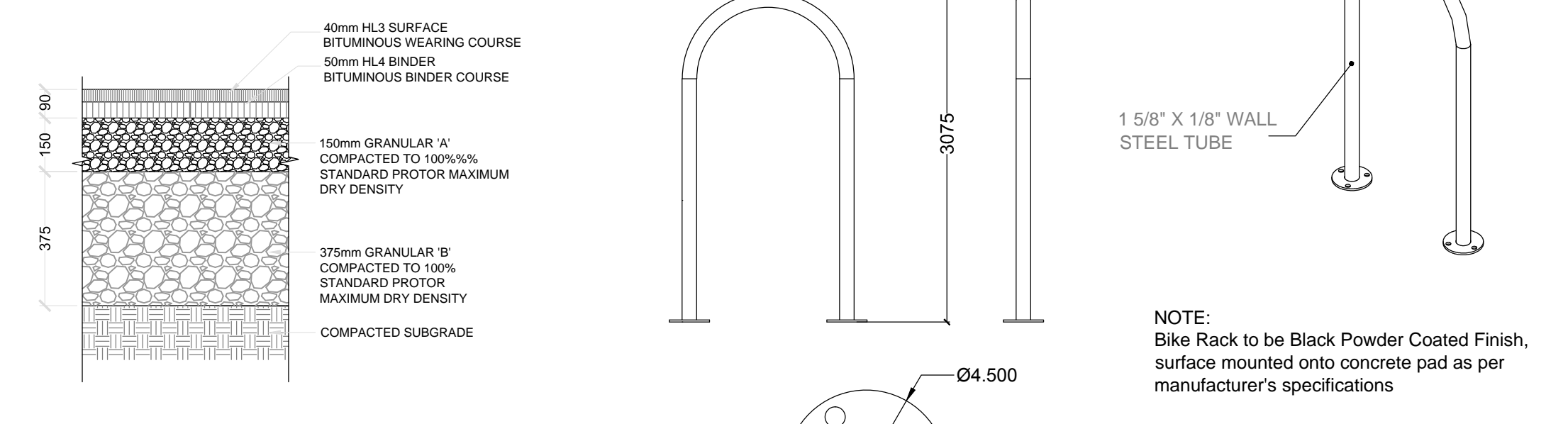
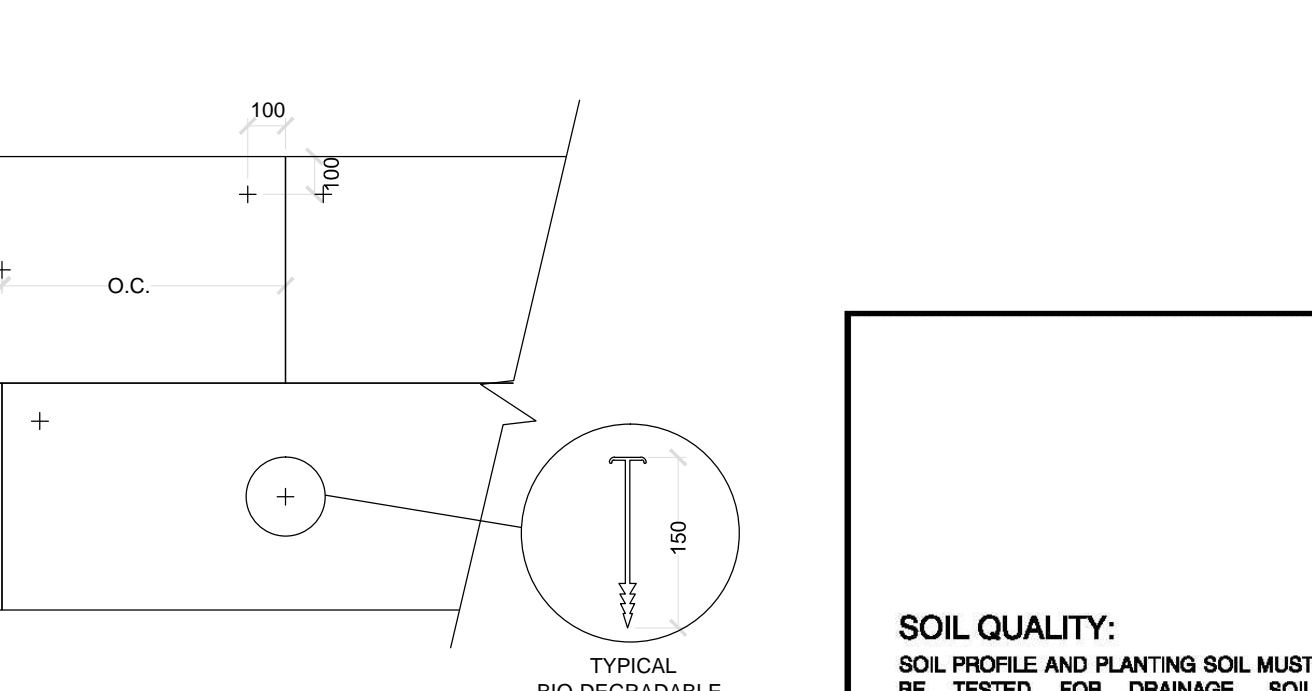


1 ASPHALT PAVING - PEDESTRIAN GRADE
1:15



2 ASPHALT PAVING - VEHICULAR GRADE
1:15

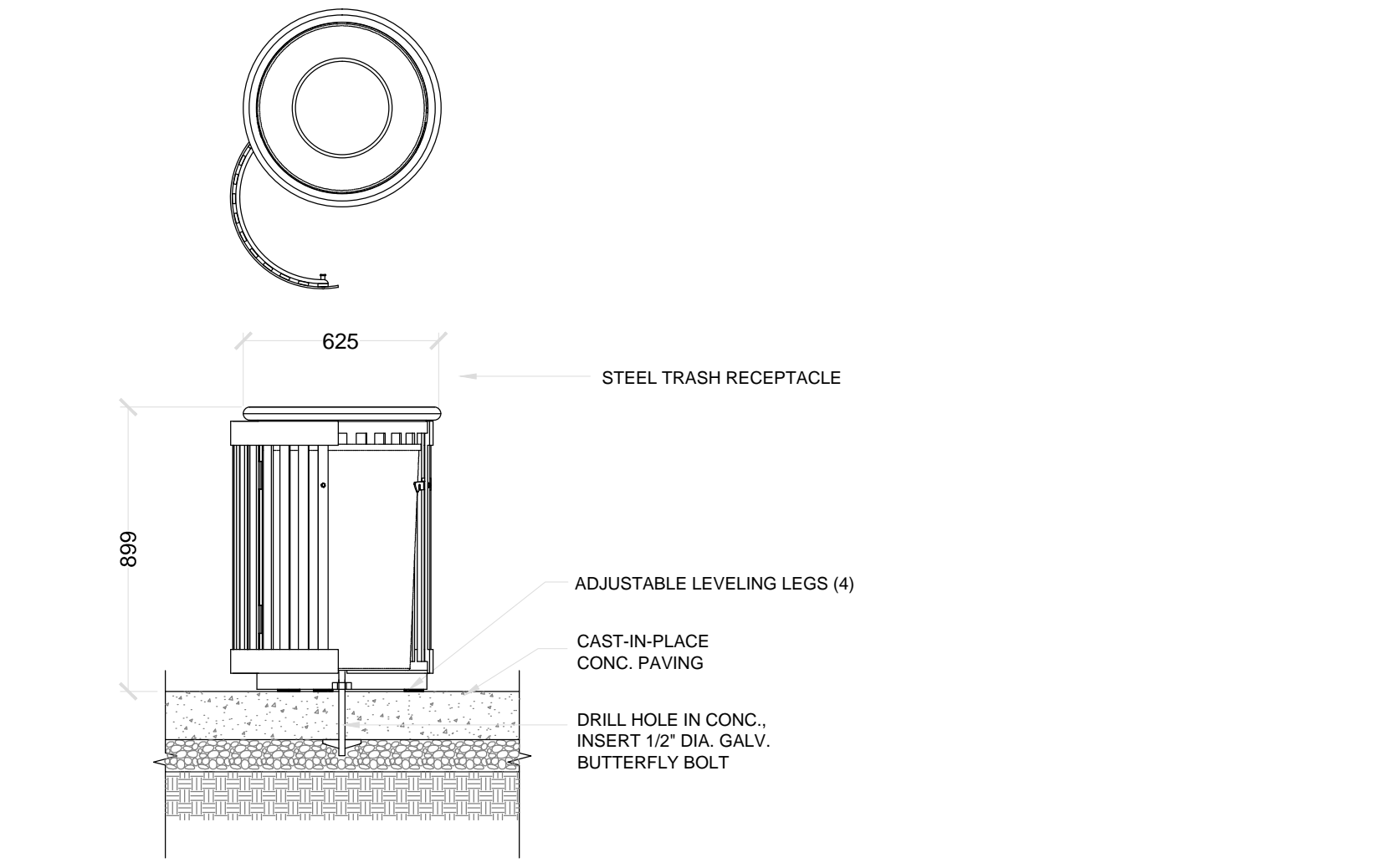
3 BIKE RACK
N.T.S.



| | | | |
|--------|------|-----------|-----|
| MBR502 | | | |
| MAGLIN | SIZE | DATE | REV |
| | A | 1/12/2009 | |

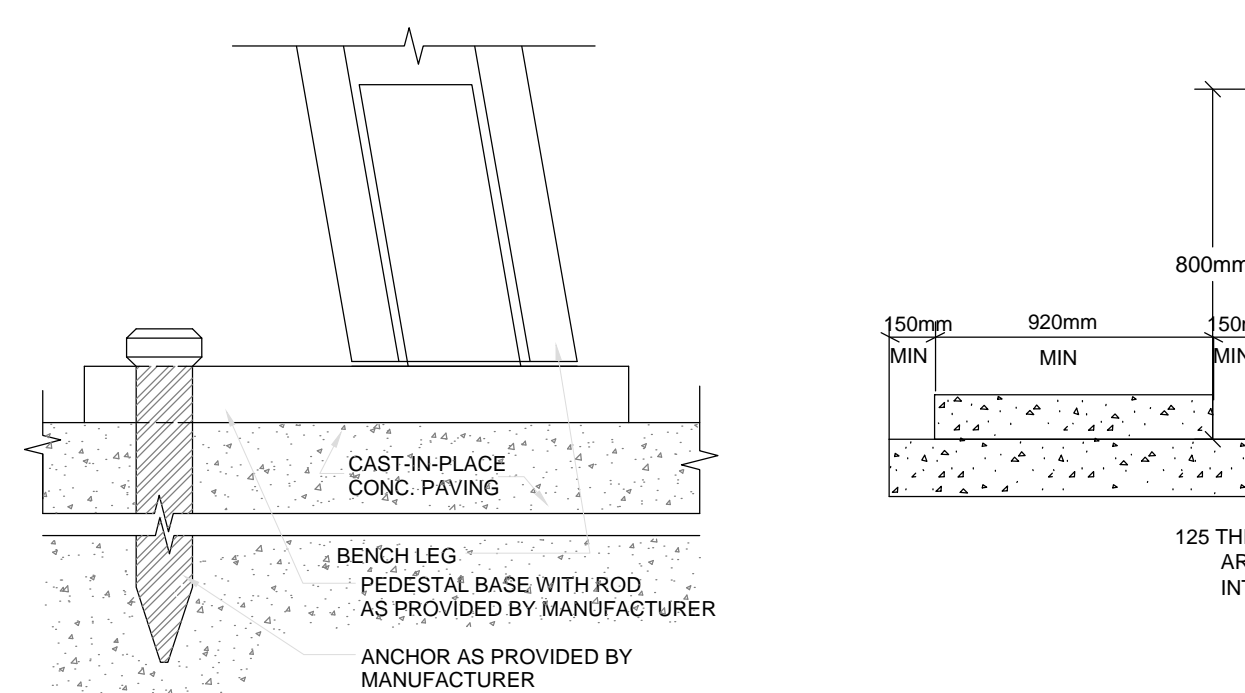
- NOTES:**
- SOD SHALL BE PLACED LENGTHWISE ACROSS THE FACE OF SLOPES AND PARALLEL TO THE CENTRE LINE OF SWALES AND AS PER SPECIFICATIONS.
 - ON SLOPES 2:1 OR STEEPER, THE SOD SHALL BE STAKED WITH 150mm LENGTH, FULLY BIO-DEGRADABLE LANDSCAPE STAKES. INSTALL AS PER MANUFACTURERS RECOMMENDATIONS.
 - EACH PIECE OF SOD SHALL HAVE THREE (3) STAKES, WITH ONE STAKE 100mm FROM EACH END AND ONE IN THE CENTRE. THE STAKES SHALL BE DRIVEN FLUSH WITH THE SOD.

6 SOD ON SLOPE INSTALLATION WITH PEGS
N.T.S.

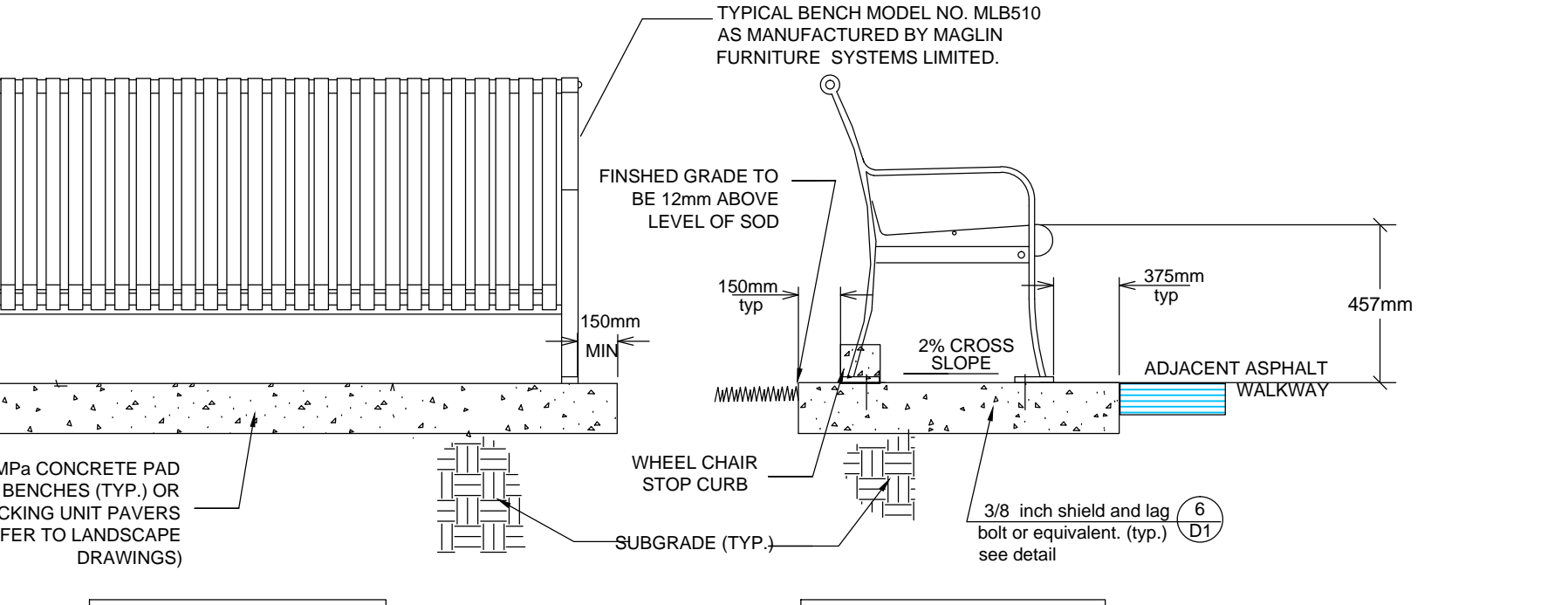


- Notes:**
- Heavy duty, steel flat bar, trash receptacle with heavy weight hinges and 32 gallon commercial grade plastic liner, standard metal lid and self-closing slam latch by Maglin Furniture systems, model number MLVR205-32-ST as provided by Maglin Furniture Systems Ltd, P.O. Box 22077, Woodstock, Ont. tel. 1-519-539-6776 (or alternate to be approved by Landscape Architect).
 - All steel components shall be protected with E-coat rust proofing and finish shall be powdercoat - black colour.
 - All dimensions in millimetres.
 - All furniture locations to be staked out and/or approved by the Landscape Architect.
 - Set waste receptacle in centre of concrete pad.
 - Locks will be provided by Owner.

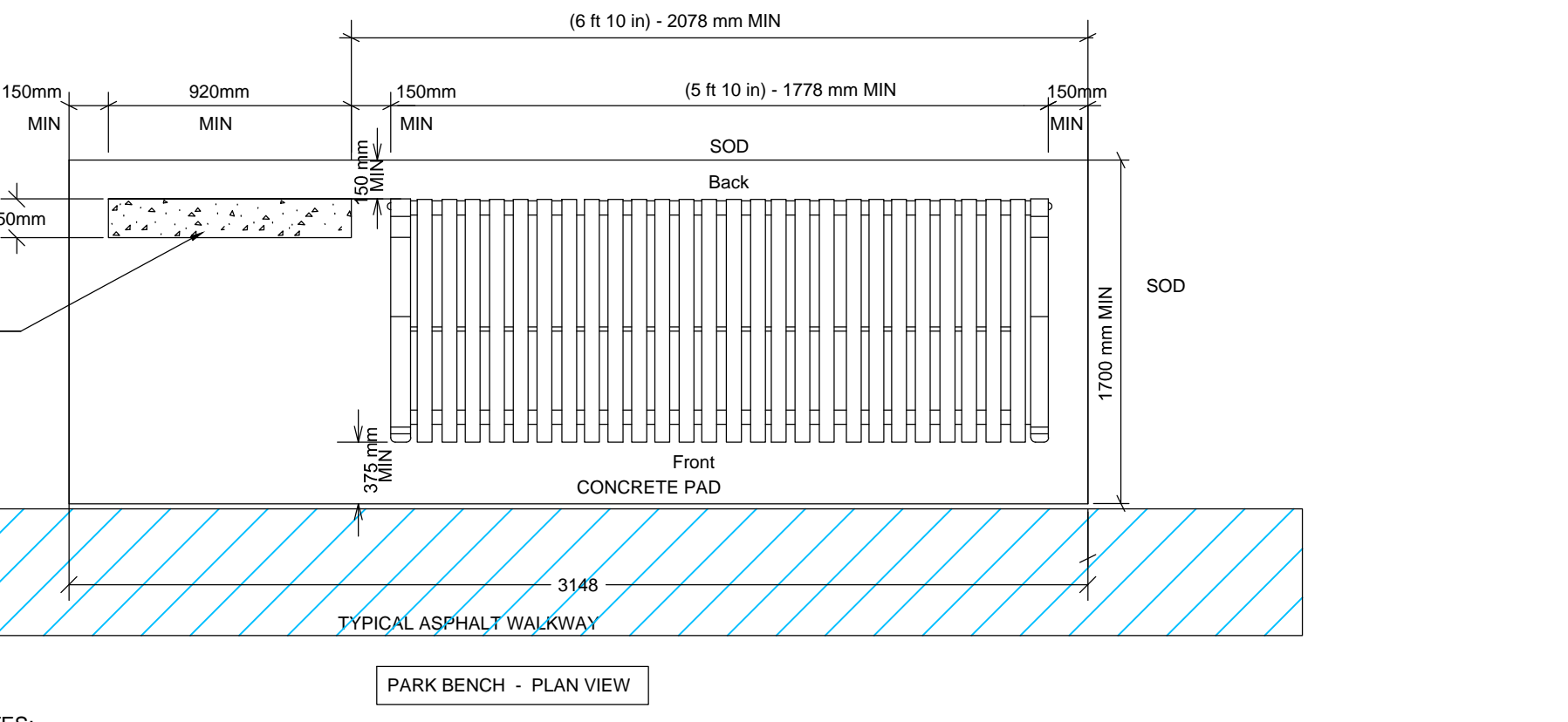
7 TRASH RECEPTACLE
1:20



4 BENCH SURFACE MOUNT
N.T.S.



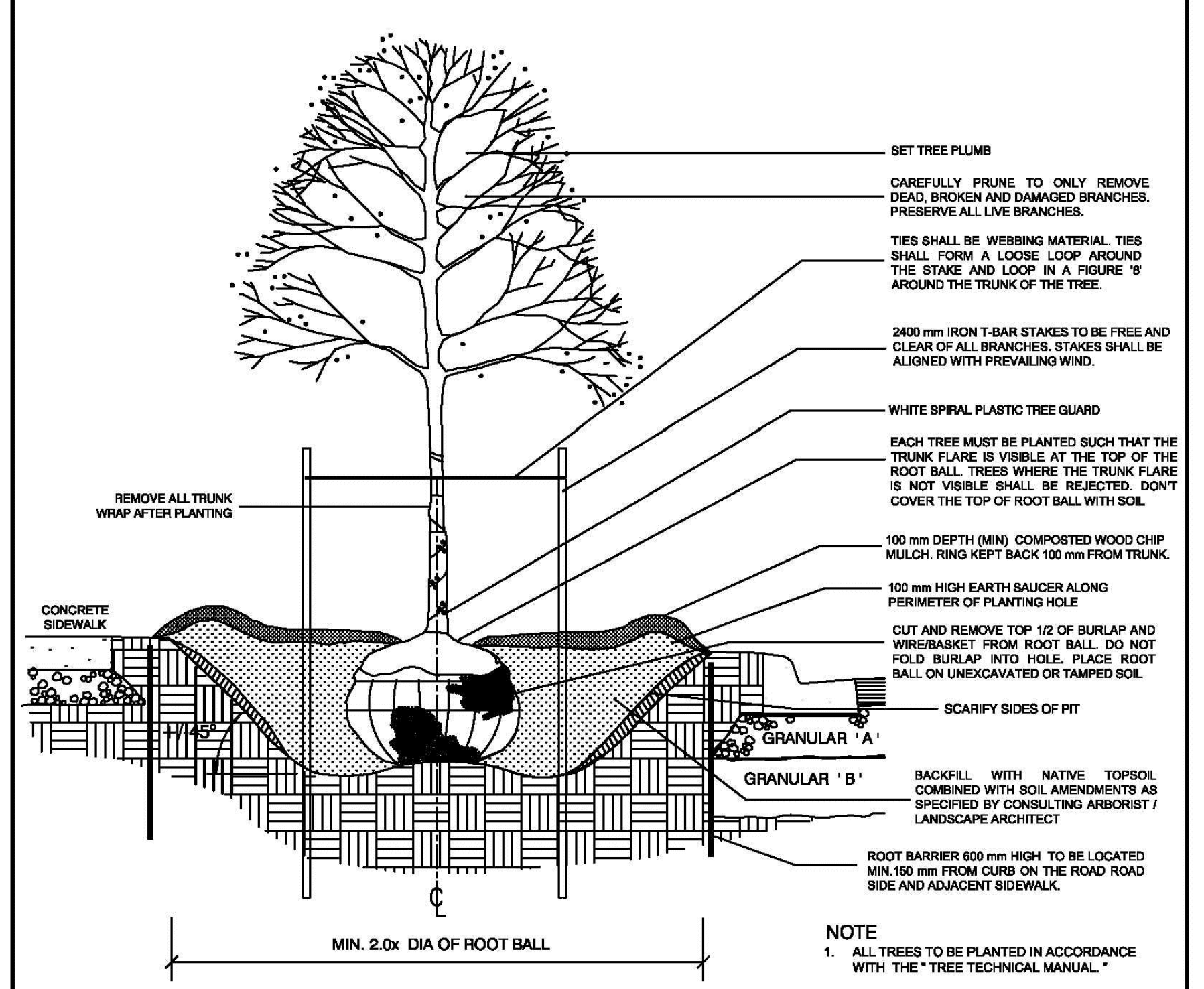
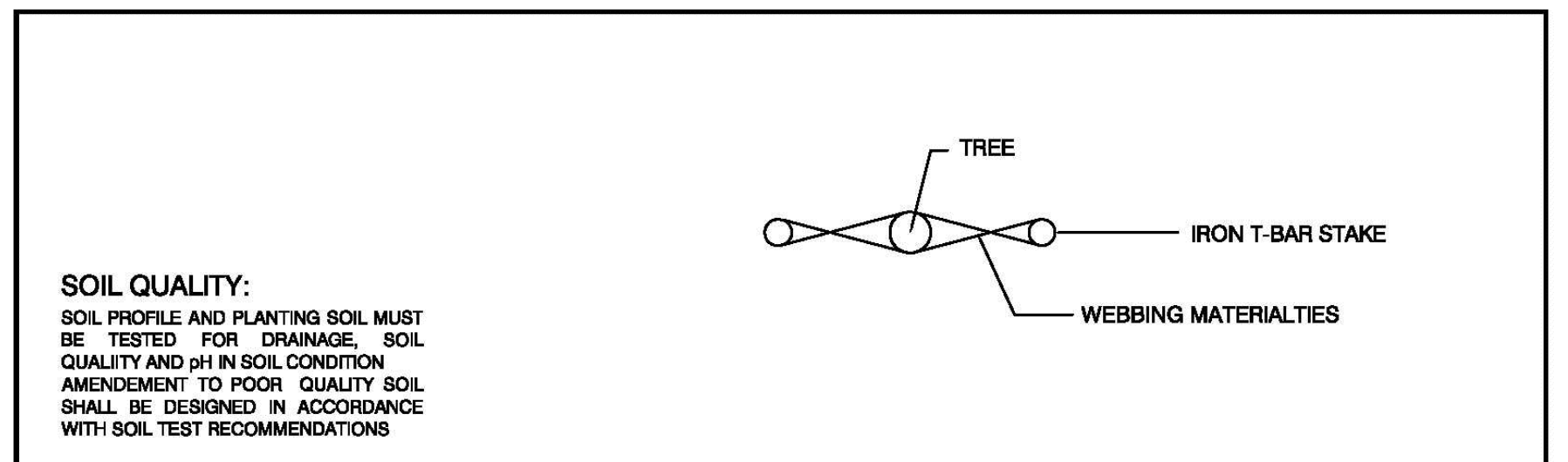
PARK BENCH - FRONT SECTION
PARK BENCH - SIDE SECTION



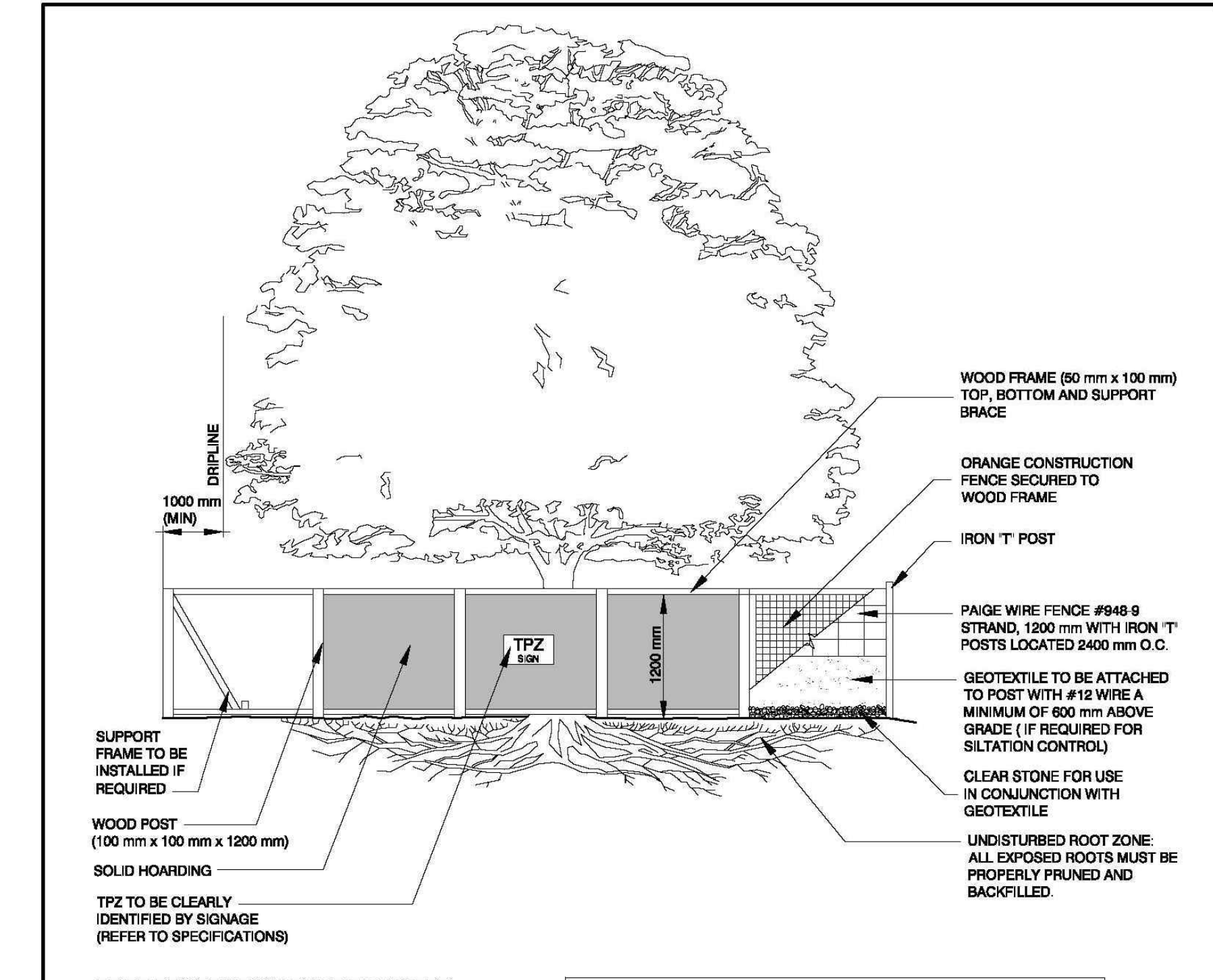
PARK BENCH - PLAN VIEW

- NOTES:**
- ALL DIMENSIONS ARE IN MILLIMETRES.
 - ALL STEEL COMPONENTS ARE MAGLIN POWDER PAINTS PER MANUFACTURERS SPECIFICATIONS.
 - BENCH COLOUR TO BE PANTONE 294 BLUE UNLESS OTHERWISE INDICATED.
 - THE BENCH IS DELIVERED PRE-ASSEMBLED. HOLES (0.57) ARE PROVIDED IN EACH FOOT FOR SECURING TO BASE. CONTRACTOR TO PROVIDE HARDWARE FOR INSTALLATION.
 - REFER TO LANDSCAPE DRAWINGS FOR LAYOUT OF CONCRETE PAD.

5 Bench on Concrete Pad - Maglin MLB510
N.T.S.



8 TREE PLANTING ON PUBLIC BOULEVARD
N.T.S.



9 TYPICAL TREE PROTECTION FENCE DETAIL
N.T.S.

TREE PROTECTION BARRIER NOTES:

- HOARDING TYPE SHOULD BE DETERMINED IN CONSULTATION WITH THE CITY.
- ALL TREE PROTECTION HOARDING SHALL BE IN PLACE AND MUST BE INSPECTED AND APPROVED BY THE CITY PRIOR TO ANY CONSTRUCTION ACTIVITIES.
- ALL ARBORICULTURE WORK SUCH AS PRUNING OF BRANCHES AND ROOTS SHALL BE CONDUCTED BY A CERTIFIED ARBORIST.
- CONSTRUCTION ACTIVITIES, GRADE CHANGES, AND STORAGE OF EQUIPMENT AND MATERIALS ARE NOT ALLOWED WITHIN THE TREE PROTECTION ZONE.
- THIS DRAWING TO BE USED IN CONJUNCTION WITH CITY OF GUELPH TREE TECHNICAL MANUAL.

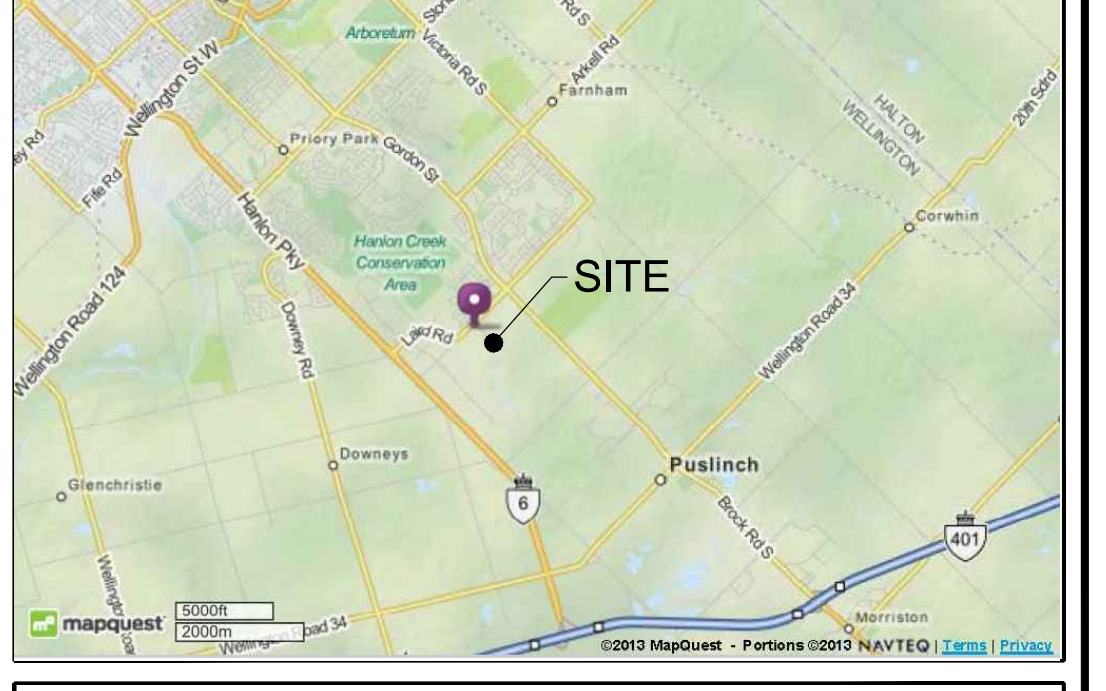
| Tree Protection Zones | | |
|--|--|---|
| Diameter of Trunk Centimetres at 1.4 m above grade (DBH) | Minimum Tree Protection Zone (TPZ) Distance from trunk, measured in metres | Potential Rooting Area (PRA) for all trees and TPZ for trees in RHS, parks, open spaces and other significant natural heritage areas. |
| <10 | 1.2 | 2.4 |
| 10-29 | 1.8 | 3.6 |
| 30-49 | 2.4 | 4.8 |
| 41-50 | 3.0 | 6.0 |
| 51-60 | 3.6 | 7.2 |
| 61-70 | 4.2 | 8.4 |
| 71-80 | 4.8 | 9.6 |
| 81-90 | 5.4 | 10.8 |
| 91-100 | 6.0 | 12.0 |
| >100 | 6 cm per 1 cm DBH | 12 cm per 1 cm DBH |

Notes:

- Or dilipine plus 1 metre, whichever is greater.
- Works in PRA are subject to specifications outlined in Subsection 4.4.4 of 'City of Guelph Tree Technical Manual'.

CITY OF GUELPH STANDARD DRAWING
DATE DRAWN: FEB/11
REV. NO.:
DESCRIPTION:
REV. DATE: REV. BY: G.F./C.M.C.
APPROVED BY:
CITY ENGINEER
ENGINEERING
SD - 90b
Guelph
JANUARY 2011
N.T.S.
DETAIL 1

KEY PLAN
N.T.S.



Legend

- General Notes**
- Drawings not to be used for construction unless authorized by the Landscape Architect
 - Contractor shall report any discrepancies between the drawings and site conditions prior to commencement of the work
 - All utility locates are the responsibility of the Contractor. Hand dig within the limits recommended by the service utility. Utility conflicts with proposed tree locations must be reported immediately to the Landscape Architect
 - Base drawing provided by Green Propeller Design, 29-336 Bronte S. Milton, ON L9T 2X6; t: 905-878-2793.
 - For Grading and servicing information refer to drawing by MTE Consultants Inc., 520 Bingham Centre Drive, Kitchener ON, N2B 3X9; t: 519-743-6500; f: 519-743-6513.
 - Landscape drawings show engineering information for design purposes only. Do not construct engineering works from these drawings.

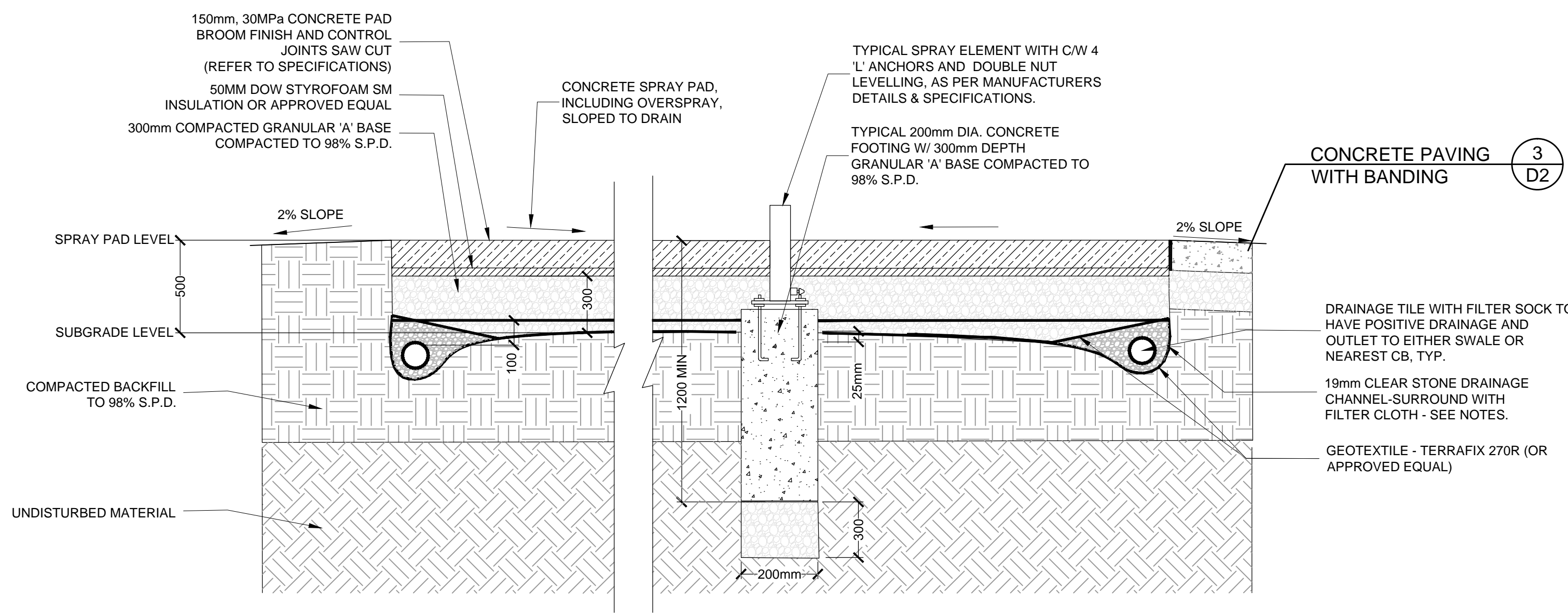


SPLASH PAD DETAILS
CITY OF GUELPH
NEW WASHROOM FACILITY & SPLASH PAD
SOUTH END COMMUNITY PARK



| DATE | ISSUE | BY |
|------------|---|-----|
| 2013.06.25 | SPA SUBMITTAL | CBa |
| 2013.07.03 | BUILDING PERMIT | CBa |
| 2013.07.05 | ISSUED FOR CLIENT REVIEW | CBa |
| 2013.07.09 | ISSUED FOR TENDER COORDINATION | CBa |
| 2013.07.10 | ISSUED FOR TENDER | CBa |
| 2013.07.10 | RE-ISSUED FOR SPA | CBa |
| 2013.09.05 | RE-ISSUED FOR SPA | CBa |
| 2013.10.01 | RE-ISSUED FOR SPA | CBa |
| DATE | REVISIONS | BY |
| 2013.05.13 | REVISED PER P.I.C. AND CITY COMMENTS | CBa |
| 2013.05.14 | REVISED PER CITY COMMENTS | CBa |
| 2013.06.06 | REVISED PER SITE PLAN REVISIONS + CITY COMMENTS | CBa |
| 2013.06.24 | REVISED PER SITE PLAN REVISIONS + CITY COMMENTS | CBa |
| 2013.07.09 | REVISED PER NEW SITE PLAN | CBa |
| 2013.07.10 | REVISED PER SITE PLAN REVISIONS AND CLIENT COMMENTS | CBa |
| 2013.09.05 | REVISED PER SITE PLAN REVISIONS AND CITY COMMENTS | CBa |

GSP group
20-72 Victoria Street East
Kitchener, Ontario N2G 1P9
T 519 866 863
F 519 866 863
www.gspgroup.ca
20 Havelock Street, Suite 200
Kitchener, Ontario, L8R 1S2
T 505 972 7477
www.gspgroup.ca
Date: January 10, 2012
Scale: 1:200
Drawn By: CBa/CZ
Project No.: 12141
D1



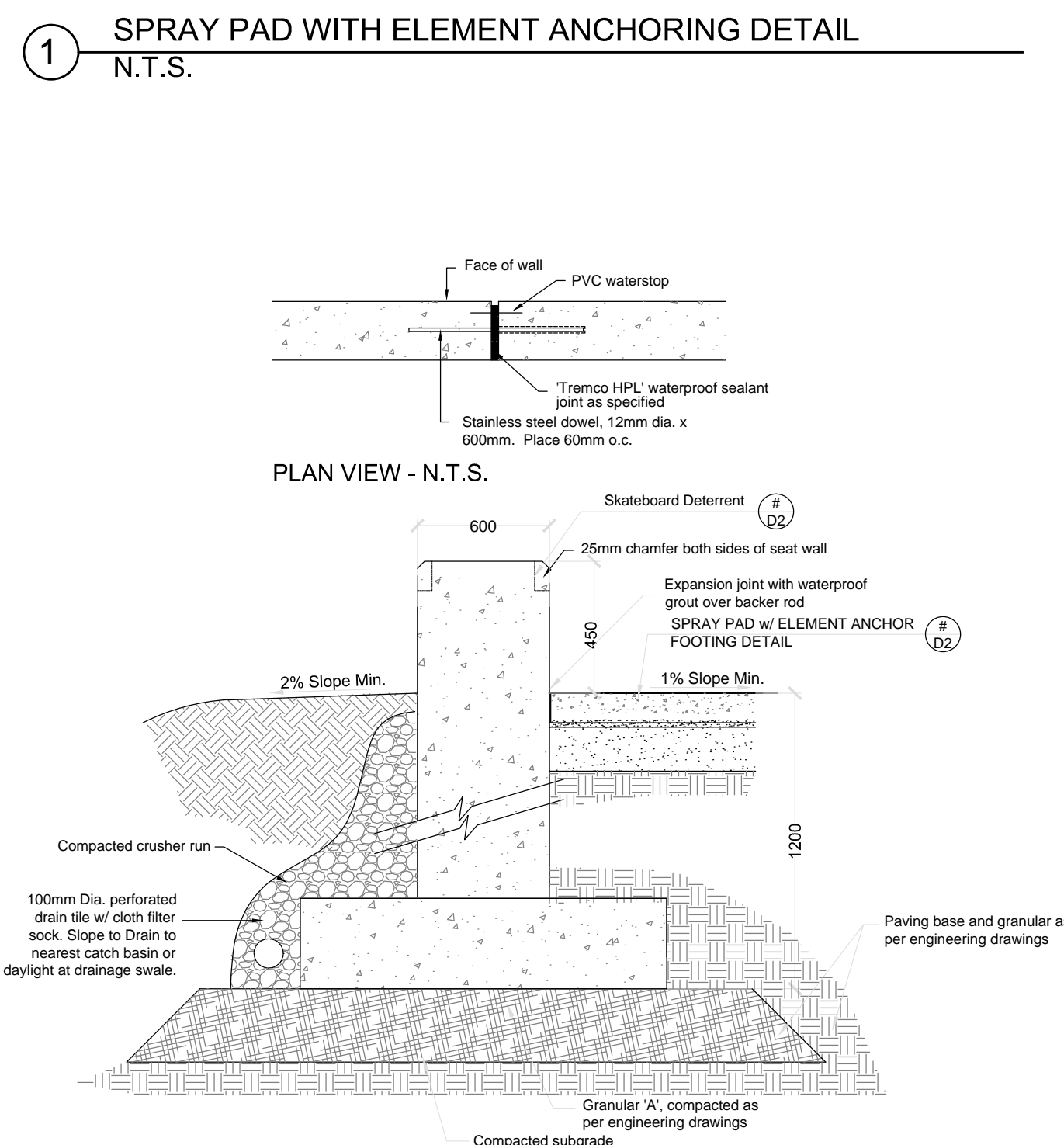
GENERAL NOTES:

- IT IS THE CONTRACTOR'S RESPONSIBILITY TO DETERMINE EXISTING SERVICE LOCATIONS.
- IF FILTER FABRIC IS ON SUB GRADE PRIOR TO INSTALLATION OF FOOTINGS THE CONTRACTOR IS TO CUT FILTER FABRIC TO ACCOMMODATE FOOTING INSTALLATION AND ENSURE THAT THE FILTER CLOTH COVERS ENTIRE SUB GRADE PRIOR TO INSTALLATION OF GRANULAR. ALL MATERIAL FROM THE EXCAVATION OF FOOTINGS IS TO BE STOCK PILED AND TESTED FOR REUSE ON SITE.
- DRAIN TILE TO BE 100mm Ø PERFORATED PIPE WITH FILTER SOCK.
- ALL WORK TO BE CARRIED OUT TO CURRENT APPLICABLE CHILDREN PLAY SPACES AND EQUIPMENT NATIONAL STANDARD OF CANADA (CAN/CSA-Z614-03).
- SPRAY PAD TO BE INSTALLED BY MANUFACTURER, INCLUDING CONCRETE PAD, SPRAY ELEMENTS, UTILITY CONNECTIONS.

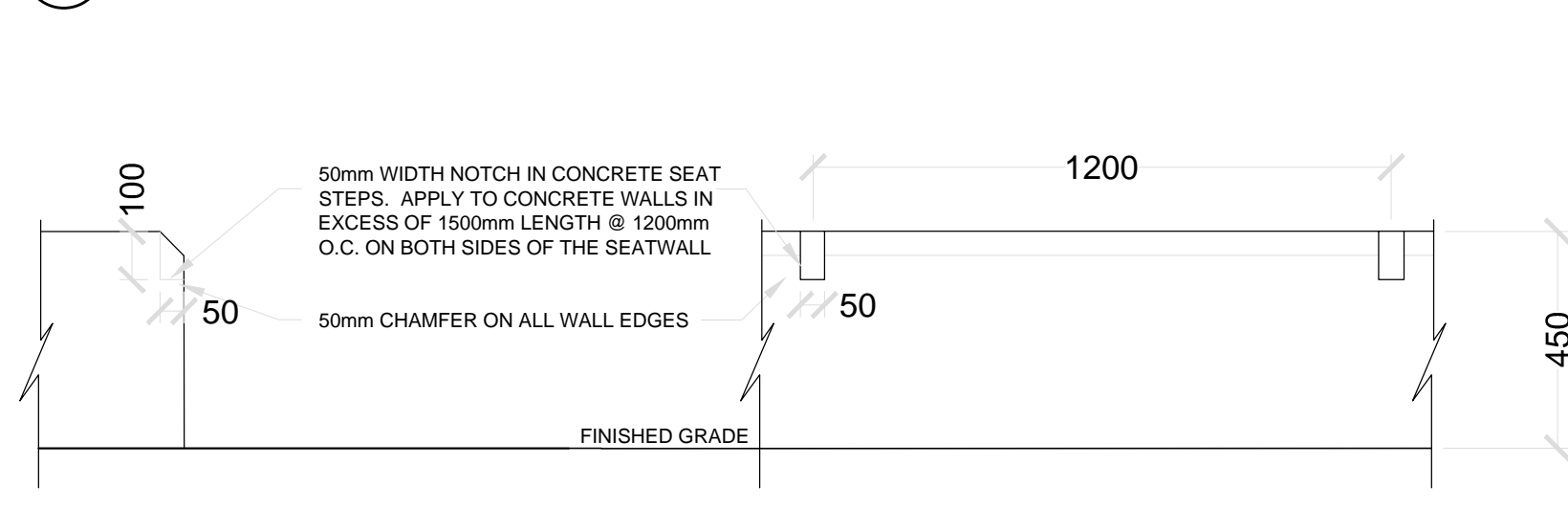
(A) CONSTRUCTION SCHEDULE FOR SPRAY ELEMENTS:

- ENTIRE SPLASH PAD AREA TO BE EXCAVATED 450mm BELOW FINISHED SPLASH SURFACE GRADE.
- COVER ROUGH GRADE WITH GEOTEXTILE PRIOR TO GRANULAR INSTALLATION
- DRAIN TILE TO BE INSTALLED AS NOTED ON DETAIL.
- FOOTINGS TO BE INSTALLED AS PER MANUFACTURERS SPECIFICATIONS
- CONCRETE SPLASH PAD AND BASE MATERIALS TO BE INSTALLED TO MATCH FINISHED GRADE.
- VERTICAL ELEMENTS TO BE SUPPLIED AND INSTALLED AS PER MANUFACTURERS SPECIFICATIONS.
- SPLASH PAD COMPONENTS TO BE TESTED BY CITY STAFF.

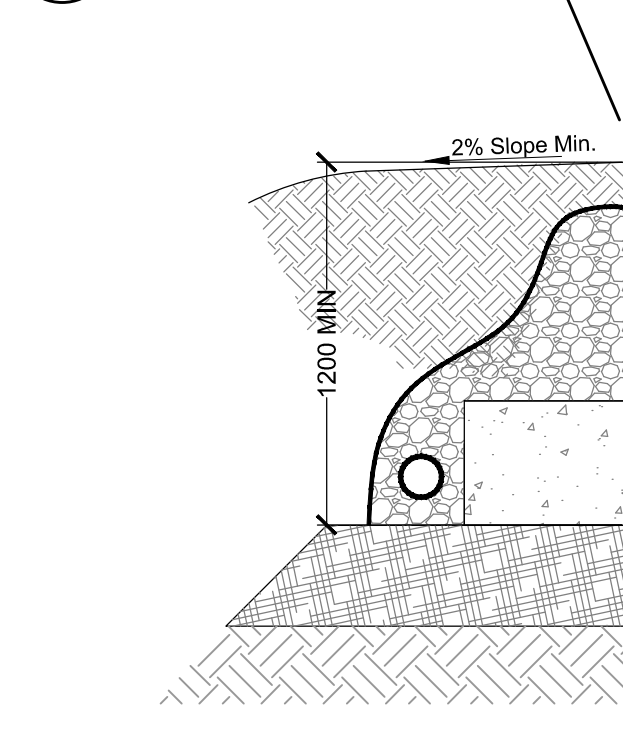
(1) SPRAY PAD WITH ELEMENT ANCHORING DETAIL
N.T.S.



(3) CONCRETE PAVING WITH BANDING
1:20



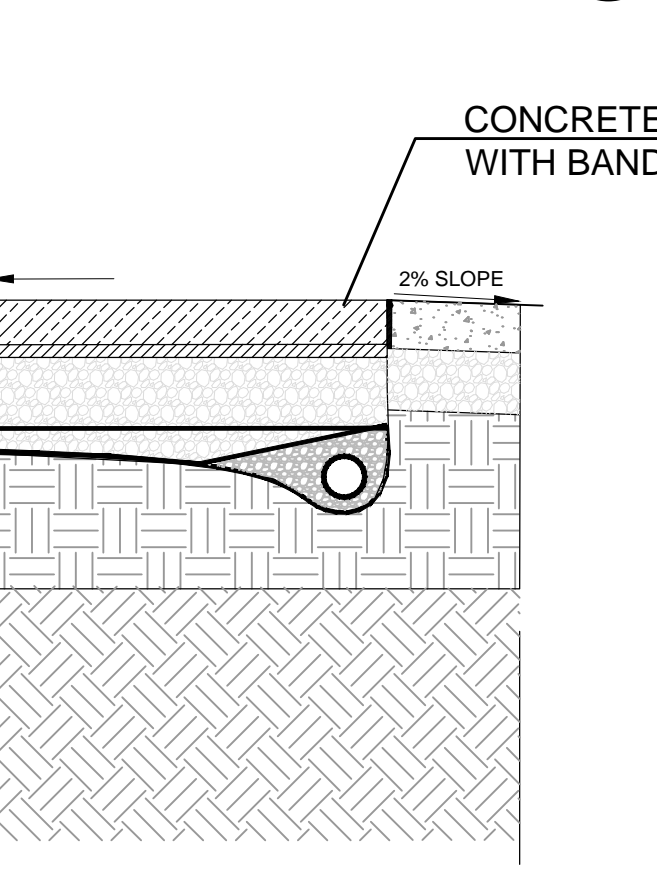
(2) SPRAY PAD SEAT WALL
D2 - 600mm WIDTH



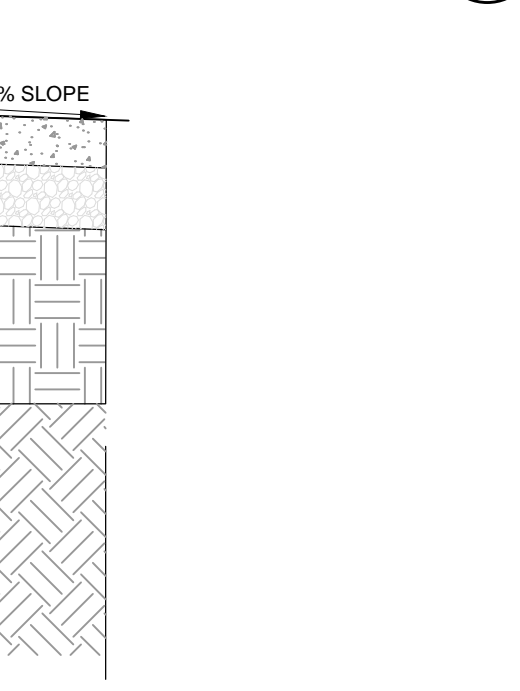
(4) SKATEBOARD DETERRENENTS
1:15



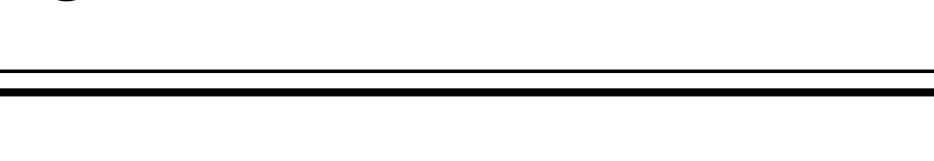
(1) SPRAY PAD WITH ELEMENT ANCHORING DETAIL
D2



(3) CONCRETE PAVING WITH BANDING
D2

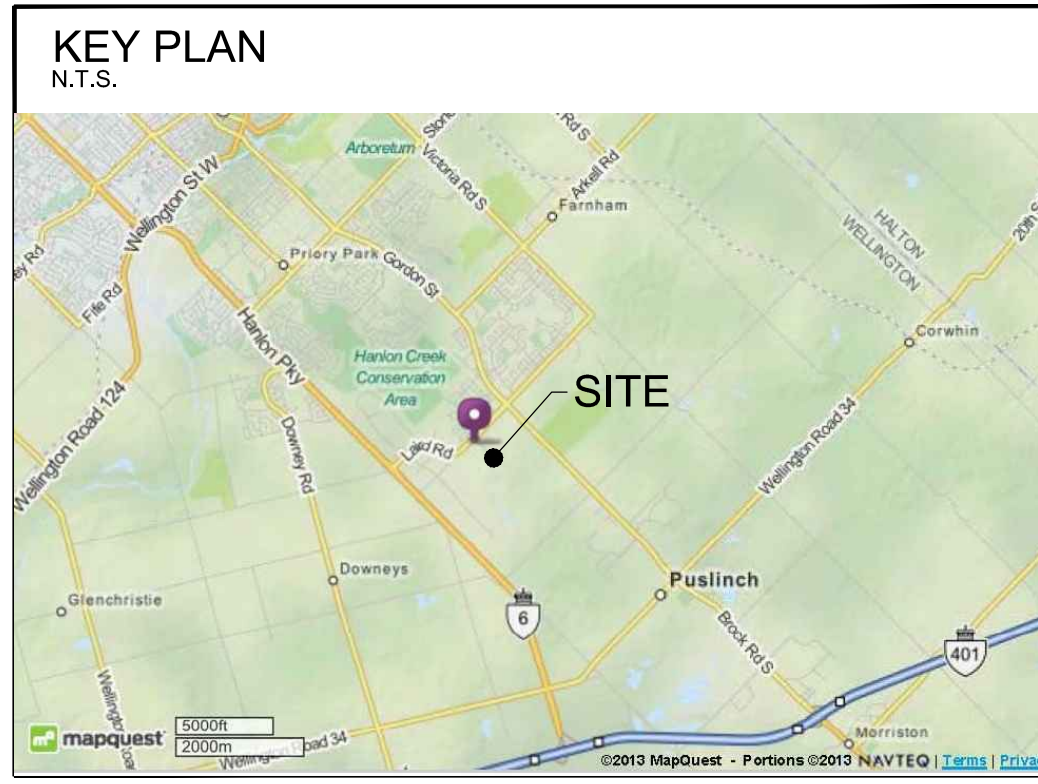
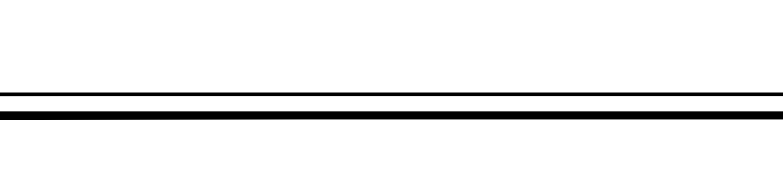


(5) SPRAY PAD SECTION WITH SEATWALL
N.T.S.



- NOTES:**
- CONCRETE MATERIALS AND METHODS OF CONSTRUCTION SHALL BE IN ACCORDANCE WITH OPSS 351.
 - CONTRACTOR TO PROVIDE A SHOP DRAWING, CERTIFIED BY A STRUCTURAL ENGINEER, TO THE LANDSCAPE ARCHITECT FOR WRITTEN APPROVAL PRIOR TO COMMENCING CONSTRUCTION. STRUCTURAL ENGINEER TO VERIFY ACCURACY OF CONCRETE DETAILS AND REINFORCEMENT PRIOR TO INSTALLATION.
 - PROVIDE FOLLOWING MATERIALS:
 - CEMENT TO OPSS 905 AND 1360.
 - AGGREGATES FOR CONCRETE: OPSS 905 AND 1360
 - REINFORCING STEEL IF DETAILED: OPSS 905 AND 1360
 - WIRE TIES IF DETAILED: PLAIN COLD DRAWN ANNEALED STEEL WIRE
 - FORM STRIPPING AGENT: COLORLESS MINERAL OIL FREE OF KEROSENE
 - LATEX ROUNDER AGENT: SIKAR BOND, SIKARUM, LATEX OR APPROVED EQUAL
 - FORM LUMBER AND PLYWOOD: CLEAN, FREE OF LOOSE KNOTS, SPLITS AND WITH REPAIRS MADE SMOOTHLY AND SECURELY
 - JOINT FILLERS: PREFORMED, NON-EXTRUDING, RESILIENT BITUMINOUS TYPE.
 - ADMITTRES: TO BE USED ONLY WHEN APPROVED BY ENGINEER.
 - AGGREGATES FOR BASE: GRANULAR 'A' TO OPSS FORM 1010.
 - WATER: WATER USED IN MIXING OR CURING SHALL BE REASONABLY CLEAN AND FREE OF OIL, SALT, ACID, ALKALI, SUGAR, VEGETABLE MATTER OR OTHER SUBSTANCE INJURIOUS TO THE FINISHED PROJECT AND SHALL MEET THE REQUIREMENT OF OPSS 351.
 - CONCRETE MIX TO PROVIDE COMPRESSIVE STRENGTH OF 28MPA AT 28 DAYS. ENTRAINED AIR OF 6% TO 1% AND SLUMP AT POINT OF DISCHARGE OF 60MM FOR CURBS AND FOOTINGS
 - GRANULAR BASE TO BE COMPACTED TO 98% MAXIMUM DRY DENSITY TO OPSS AND TO DEPTHS AS DETAILED.
 - FOUR CONCRETE IN FAVORABLE WEATHER CONDITIONS.
 - SURFACE FINISH SHALL BE SMOOTH ARCHITECTURAL FINISH.
 - PROVIDE EXPANSION AND CONTRACTION JOINTS AS DETAILED.
 - REPAIR DEFECTIVE AREAS WITH CONCRETE OR FILL PLASTIC, OR REMOVE DEFECTIVE WORK AND REPLACE WITH NEW CONCRETE.
 - CONCRETE AREAS WILL NOT BE ACCEPTED IF:
 - FAILS TO MEET REQUIREMENTS OF THIS SPECIFICATION
 - CONTAINS EXCESSIVE HONEYCOMBING OR EMBEDDED DEBRIS
 - 28 DAYS AVERAGE STRENGTH IN ANY DEFINED AREA IS LESS THAN 85% OF SPECIFIED MINIMUM STRENGTH.
 - SURFACE IRREGULARITIES
 - DAMAGED OR CHIPPED.
 - IT IS THE CONTRACTOR'S RESPONSIBILITY TO MAINTAIN AND PROTECT CONCRETE AREAS UNTIL TIME OF FINAL ACCEPTANCE.

(2) SPRAY PAD SEAT WALL - 600mm WIDTH
1:20



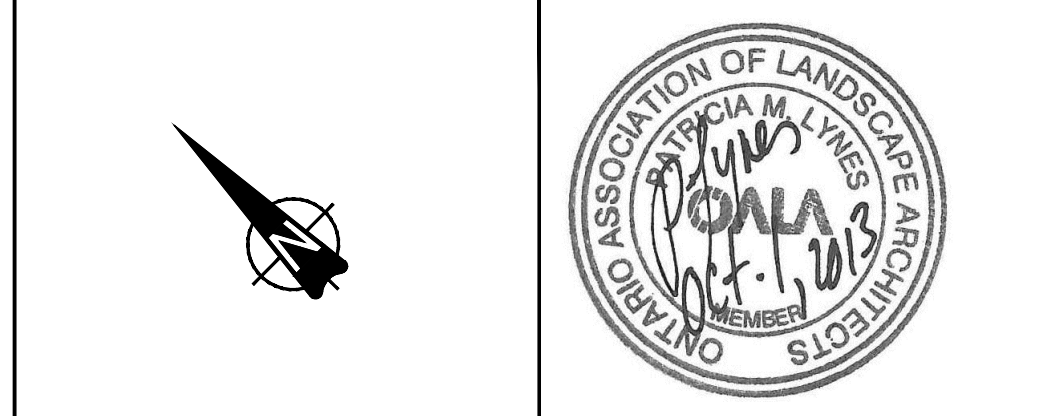
Legend

General Notes

- Drawings not to be used for construction unless authorized by the Landscape Architect
- Contractor shall report any discrepancies between the drawings and site conditions prior to commencement of the work
- All utility locates are the responsibility of the Contractor. Hand dig within the limits recommended by the service utility. Utility conflicts with proposed tree locations must be reported immediately to the Landscape Architect
- Base drawing provided by Green Propeller Design, 29-336 Bronte St. Milton, ON L9T 2X6; t: 905-878-2793.
- For Grading and servicing information refer to drawing by MTE Consultants Inc., 520 Bingham Centre Drive, Kitchener ON, N2B 3X9; t: 519-743-6500; f: 519-743-6513.
- Landscape drawings show engineering information for design purposes only. Do not construct engineering works from these drawings.



SPLASH PAD DETAILS ~ SPLASH PAD
CITY OF GUELPH
NEW WASHROOM FACILITY & SPLASH PAD
SOUTH END COMMUNITY PARK



| DATE | ISSUE | BY |
|------------|--------------------------------|-----|
| 2013.06.25 | SPA SUBMITTAL | CBa |
| 2013.07.03 | BUILDING PERMIT | CBa |
| 2013.07.05 | ISSUED FOR CLIENT REVIEW | CBa |
| 2013.07.09 | ISSUED FOR TENDER COORDINATION | CBa |
| 2013.07.10 | ISSUED FOR TENDER | CBa |
| 2013.07.10 | RE-ISSUED FOR SPA | CBa |
| 2013.09.05 | RE-ISSUED FOR SPA | CBa |
| 2013.10.01 | RE-ISSUED FOR SPA | CBa |

| DATE | REVISIONS | BY |
|------------|---|-----|
| 2013.05.13 | REVISED PER P.I.C. and CITY COMMENTS | CBa |
| 2013.05.14 | REVISED PER CITY COMMENTS | CBa |
| 2013.06.06 | REVISED PER SITE PLAN REVISIONS + CITY COMMENTS | CBa |
| 2013.06.24 | REVISED PER SITE PLAN REVISIONS + CITY COMMENTS | CBa |
| 2013.07.09 | REVISED PER NEW SITE PLAN | CBa |
| 2013.07.10 | REVISED PER SITE PLAN REVISIONS AND CLIENT COMMENTS | CBa |
| 2013.09.05 | REVISED PER SITE PLAN REVISIONS AND CITY COMMENTS | CBa |

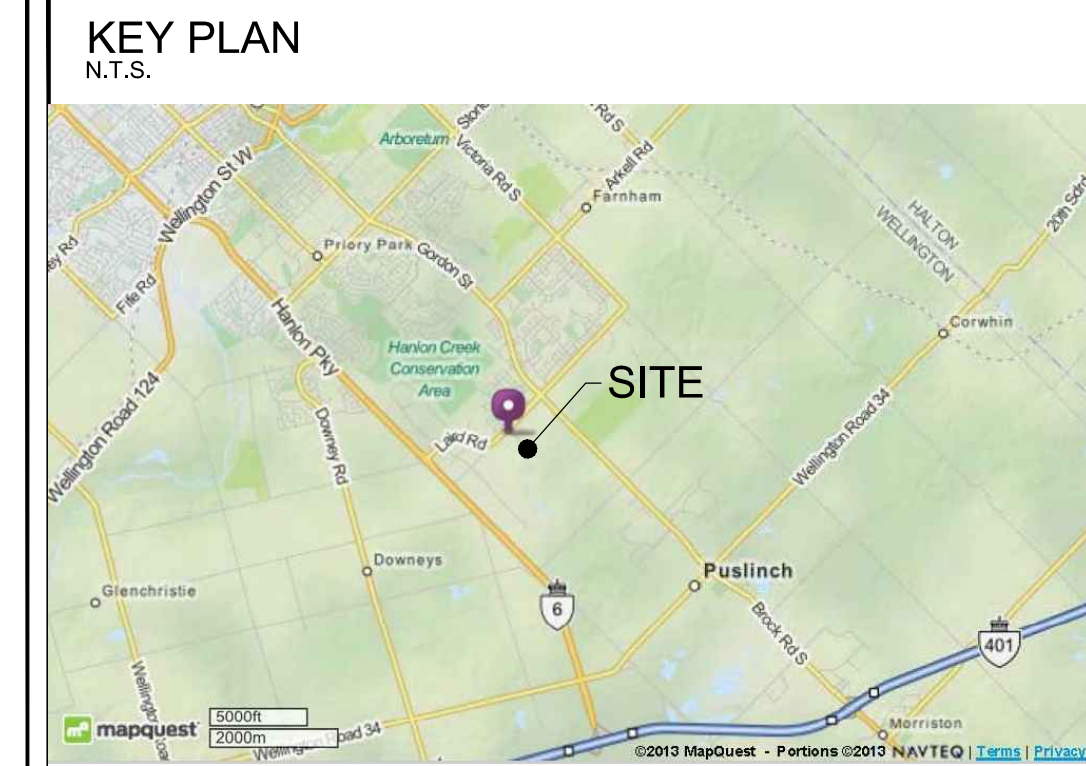
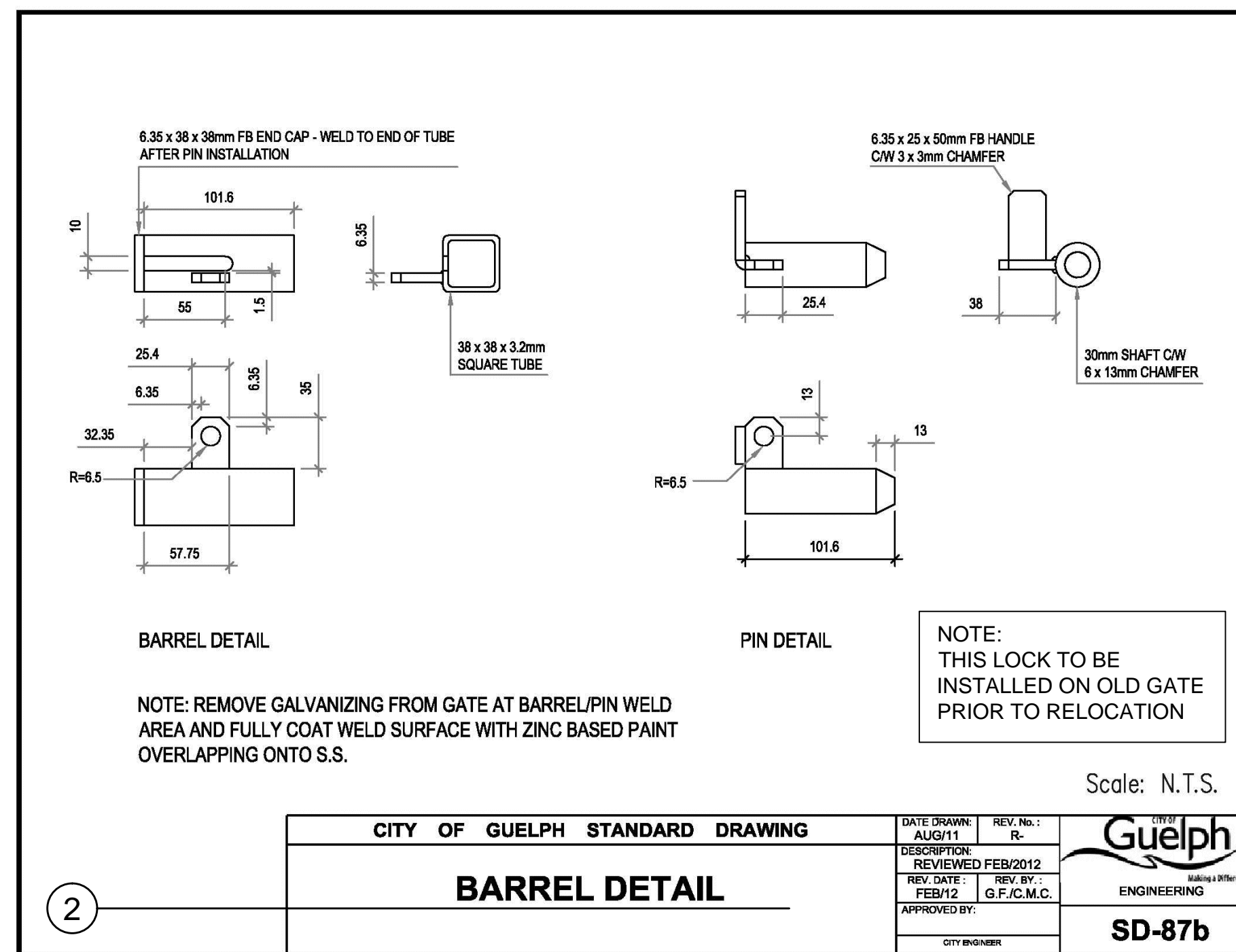
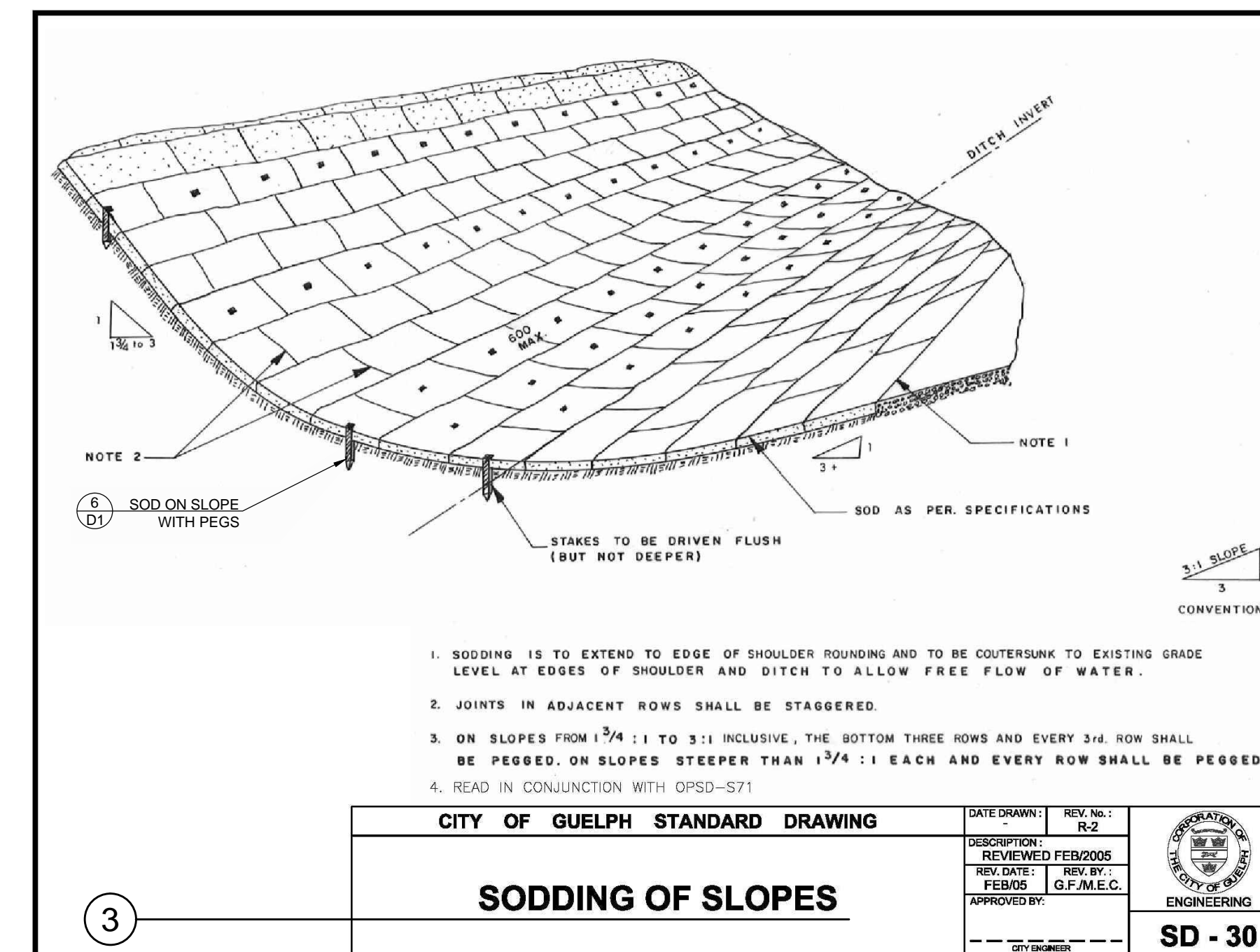
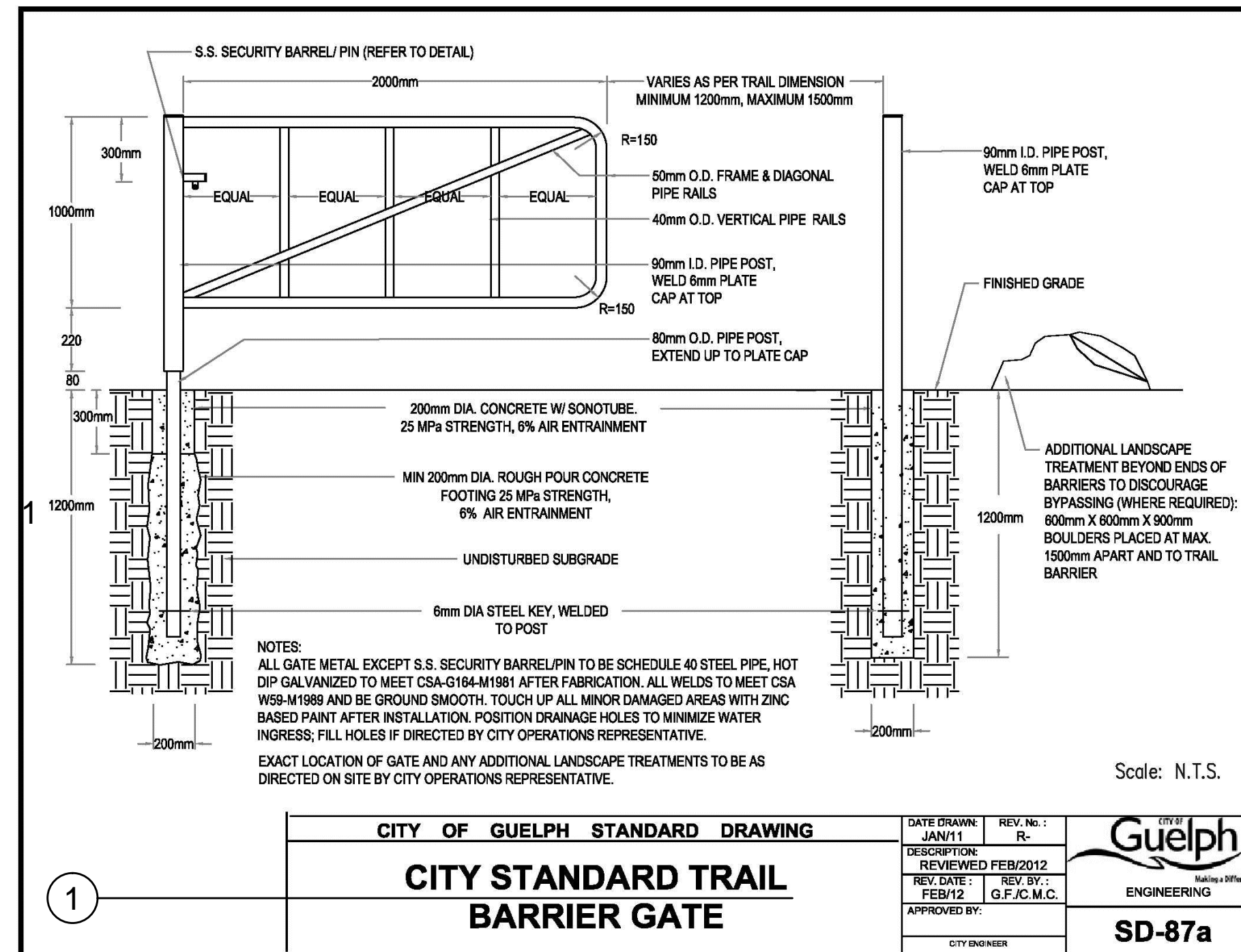
GSP group

20-172 Innes Street South
Kitchener, Ontario N2C 4P8
T 519 886 8663
F 519 886 8643

20-172 Innes Street, Suite 200
Kitchener, Ontario L8R 1S2
T 519 872 7477
F 519 886 8643

www.gspgroup.ca

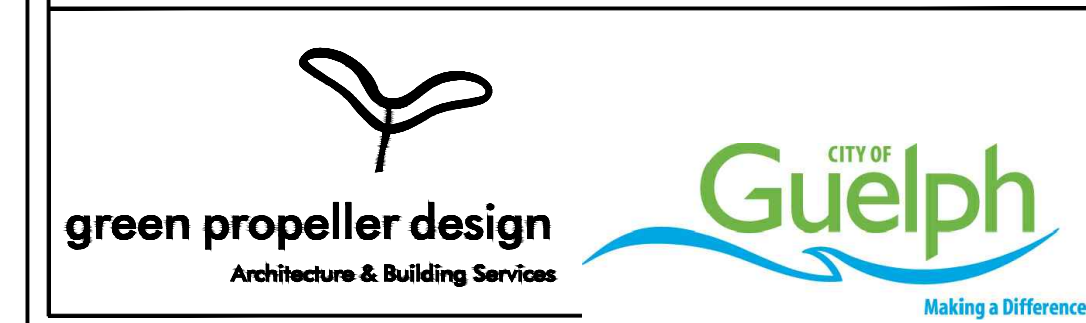
D2



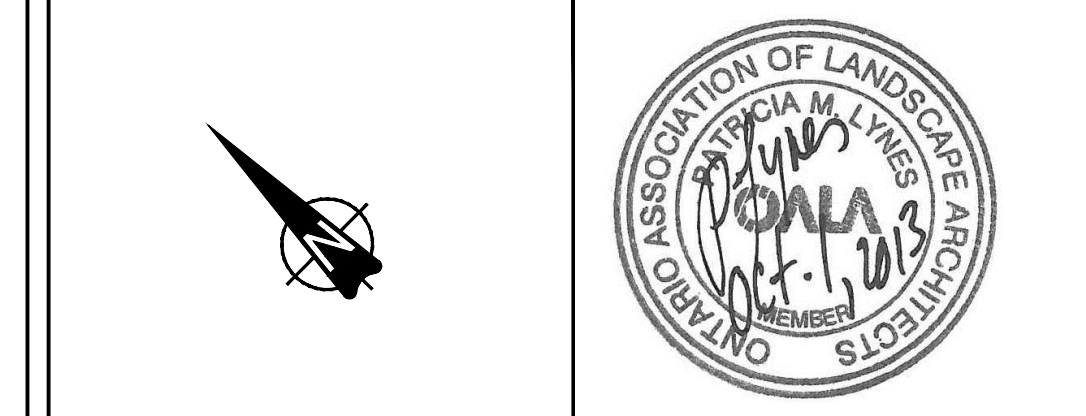
Legend

General Notes

- Drawings not to be used for construction unless authorized by the Landscape Architect
- Contractor shall report any discrepancies between the drawings and site conditions prior to commencement of the work
- All utility locates are the responsibility of the Contractor. Hand dig within the limits recommended by the service utility. Utility conflicts with proposed tree locations must be reported immediately to the Landscape Architect
- Base drawing provided by Green Propeller Design, 29-336 Bronte S. Milton, ON L9T 2X6; t: 905-878-2793.
- For Grading and servicing information refer to drawing by MTE Consultants Inc., 520 Bingham Centre Drive, Kitchener ON, N2B 3X9; t: 519-743-6500; f: 519-743-6513.
- Landscape drawings show engineering information for design purposes only. Do not construct engineering works from these drawings.



SPLASH PAD DETAILS ~ SPLASH PAD
 CITY OF GUELPH
 NEW WASHROOM FACILITY & SPLASH PAD
 SOUTH END COMMUNITY PARK



| DATE | ISSUE | BY |
|------------|--------------------------------|-----|
| 2013.06.25 | SPA SUBMITTAL | CBa |
| 2013.07.03 | BUILDING PERMIT | CBa |
| 2013.07.05 | ISSUED FOR CLIENT REVIEW | CBa |
| 2013.07.09 | ISSUED FOR TENDER COORDINATION | CBa |
| 2013.07.10 | ISSUED FOR TENDER | CBa |
| 2013.07.10 | RE-ISSUED FOR SPA | CBa |
| 2013.09.05 | RE-ISSUED FOR SPA | CBa |
| 2013.10.01 | RE-ISSUED FOR SPA | CBa |

| DATE | REVISIONS | BY |
|------------|---|-----|
| 2013.05.13 | REVISED PER P.I.C. and CITY COMMENTS | CBa |
| 2013.05.14 | REVISED PER CITY COMMENTS | CBa |
| 2013.06.06 | REVISED PER SITE PLAN REVISIONS + CITY COMMENTS | CBa |
| 2013.06.24 | REVISED PER SITE PLAN REVISIONS + CITY COMMENTS | CBa |
| 2013.07.09 | REVISED PER NEW SITE PLAN | CBa |
| 2013.07.10 | REVISED PER SITE PLAN REVISIONS AND CLIENT COMMENTS | CBa |
| 2013.09.05 | REVISED PER SITE PLAN REVISIONS AND CITY COMMENTS | CBa |

GSP group

20-72 Innes Street South
 Kitchener, Ontario N2C 4P8
 T 519 883 8400
 F 519 883 8401

20 Hercules Street, Suite 200
 Waterloo, Ontario L8R 1S2
 T 565 572 7477
 F 519 883 8401

www.gspgroup.ca

Date: January 10, 2012 Drawn By: CBa/CZ
 Scale: 1:200 Project No.: 12141

D3